

図5-9 (1) 日間調査結果 (実証池・実証対象機器稼働前 (7月28~29日))

凡例の数字は水深(m)

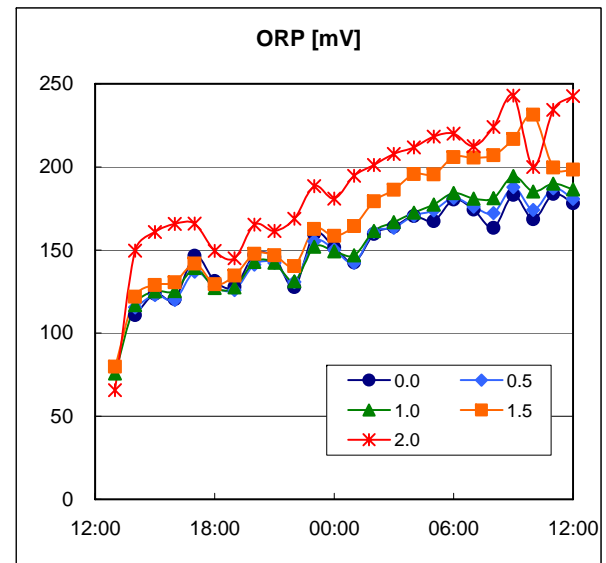
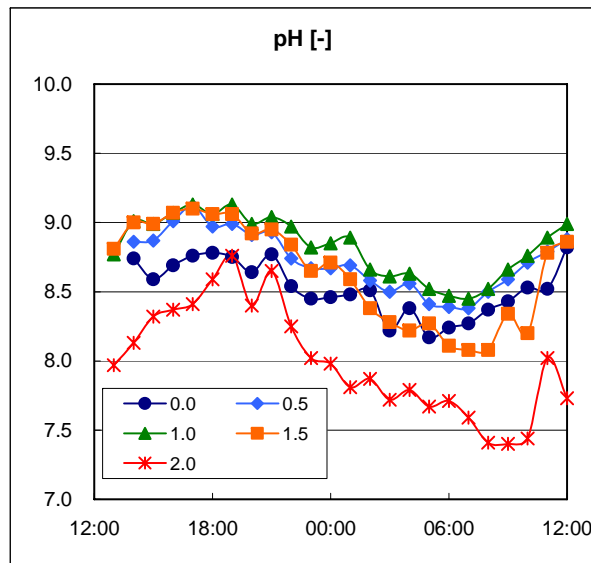
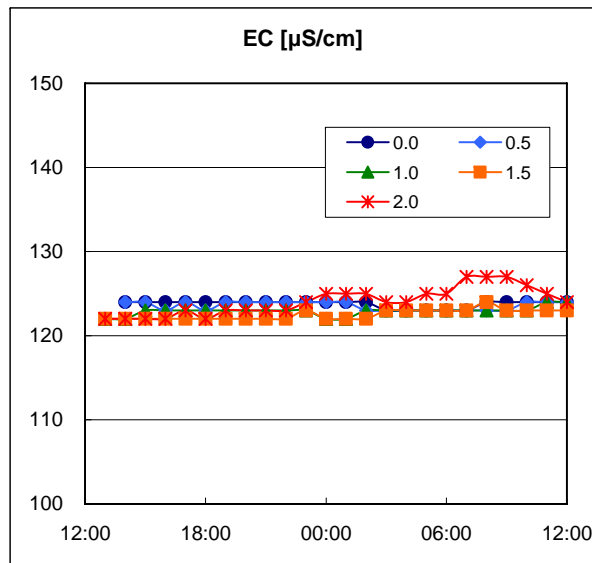
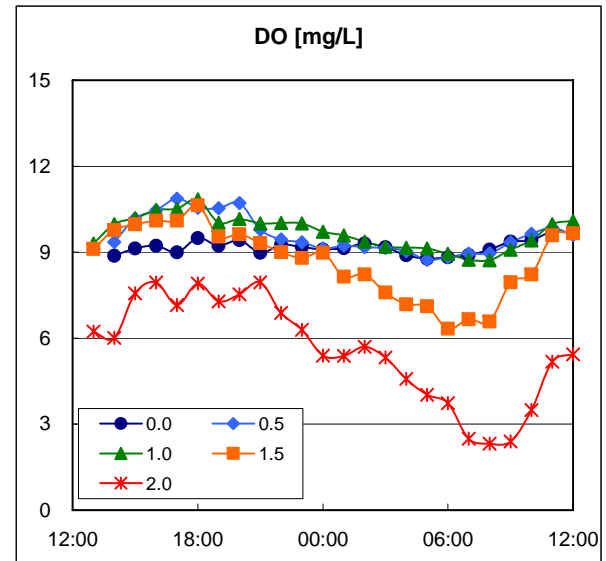
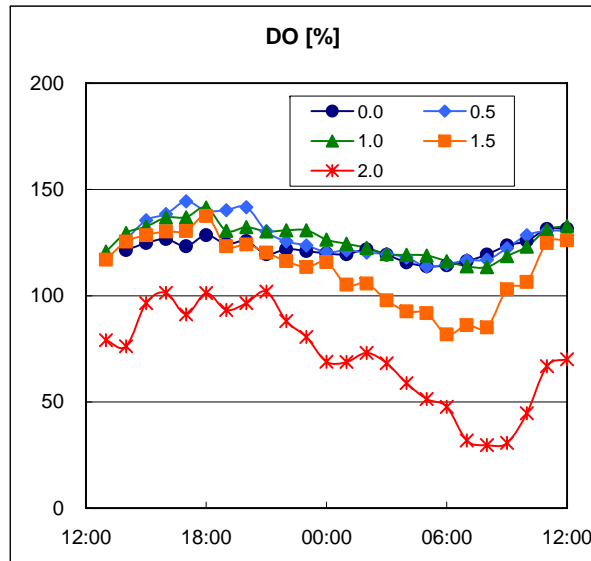
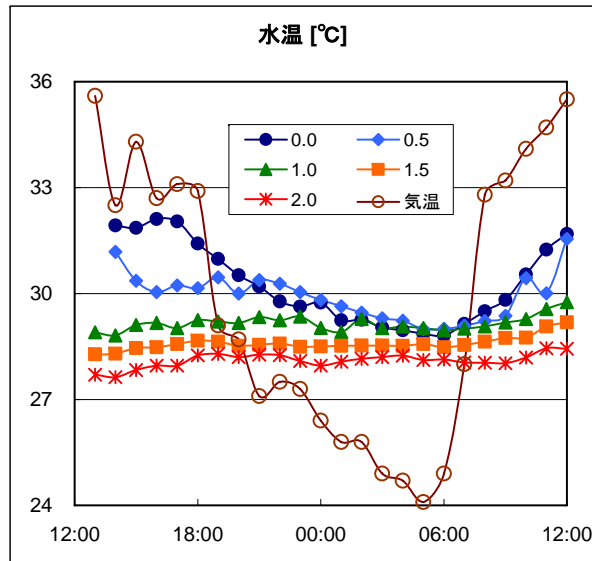


図5-9(2) 日間調査結果(対照池・実証対象機器稼働前(7月28~29日))

凡例の数字は水深(m)

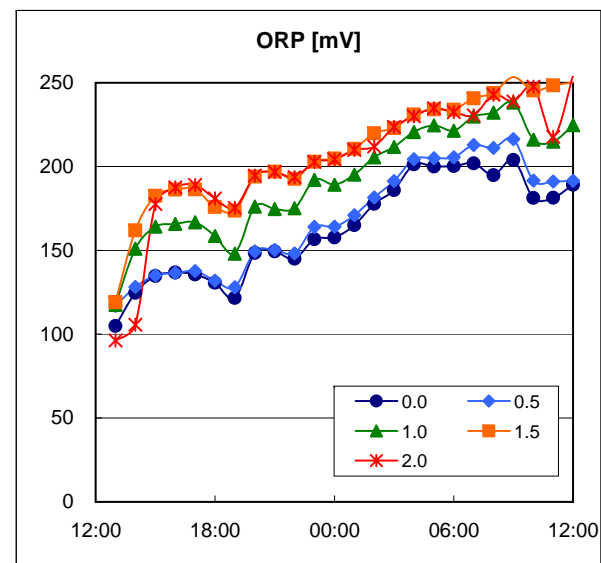
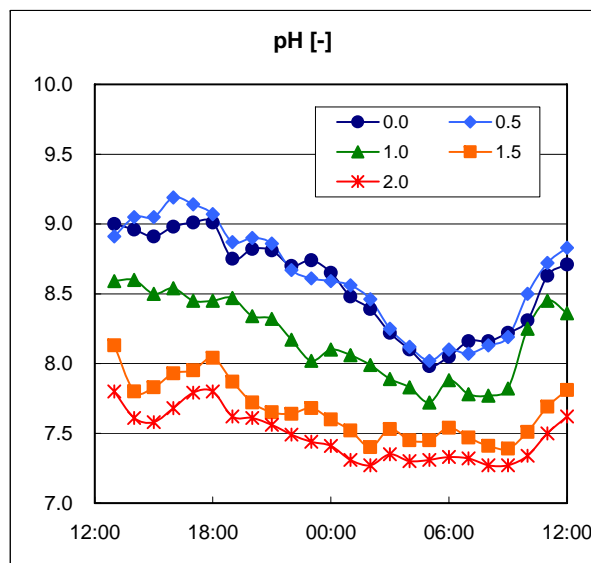
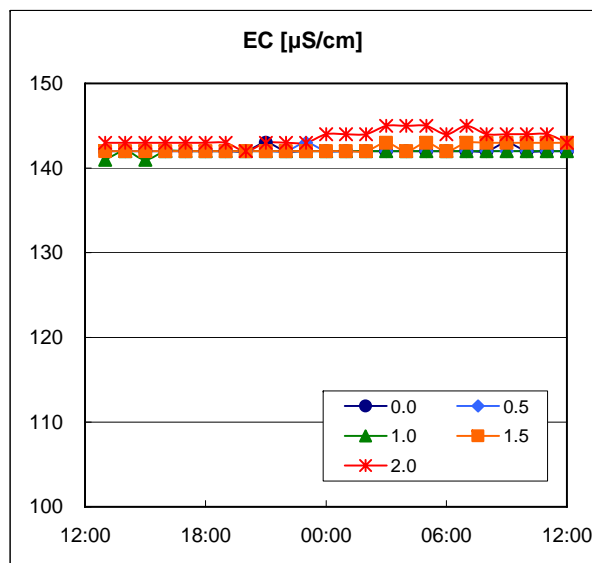
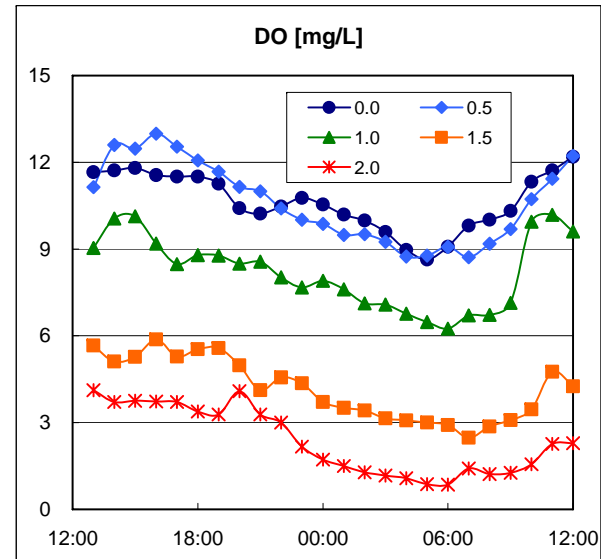
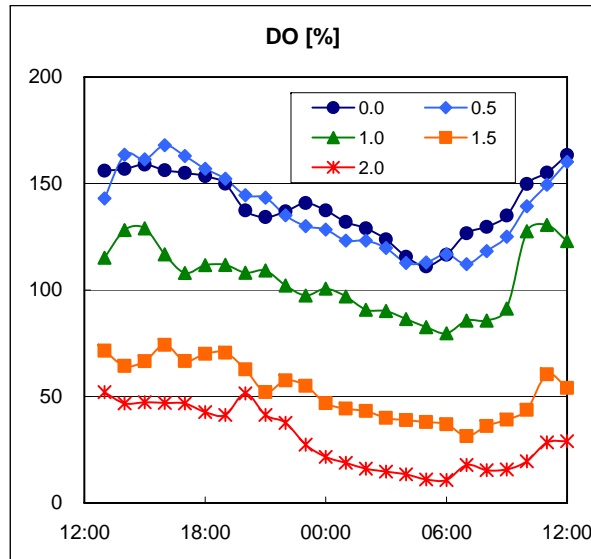
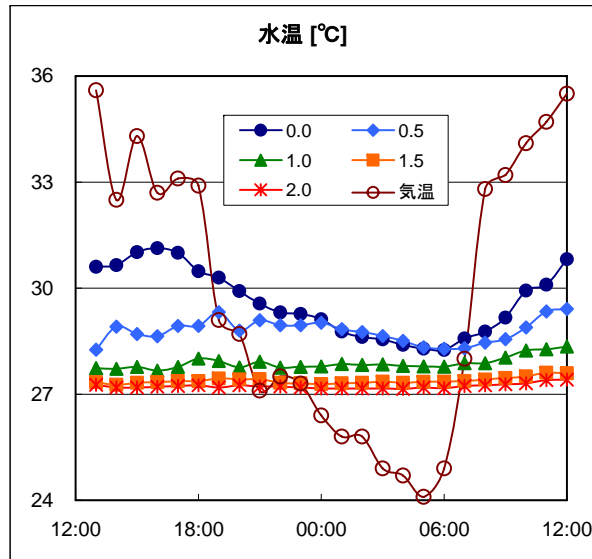


図5-9(3) 日間調査結果(実証池・実証対象機器稼働後(8月10~11日))

凡例の数字は水深(m)

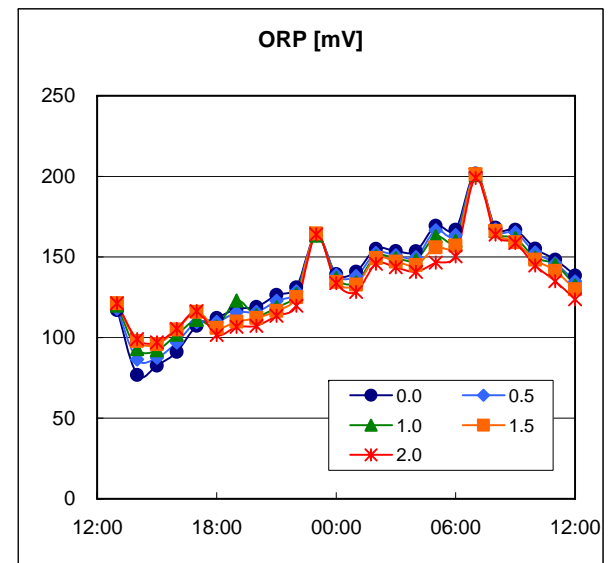
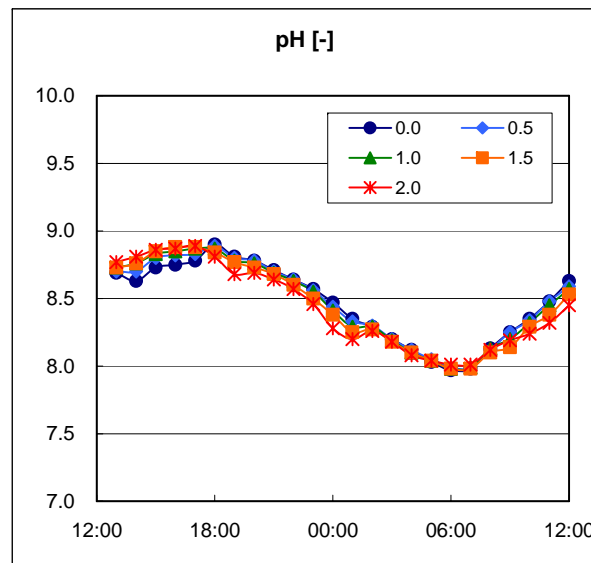
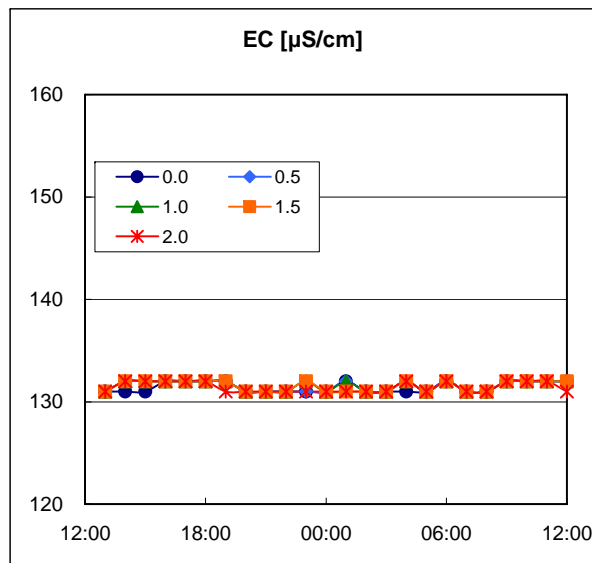
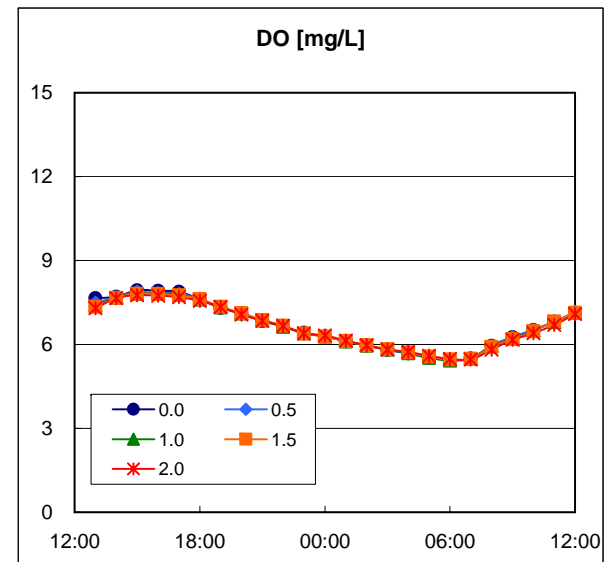
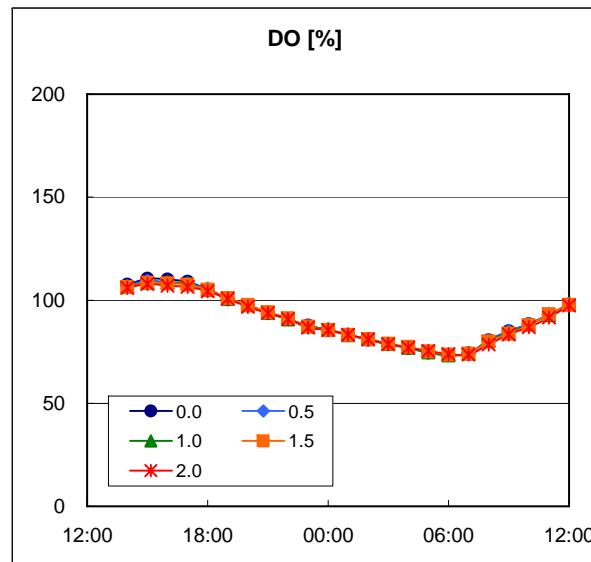
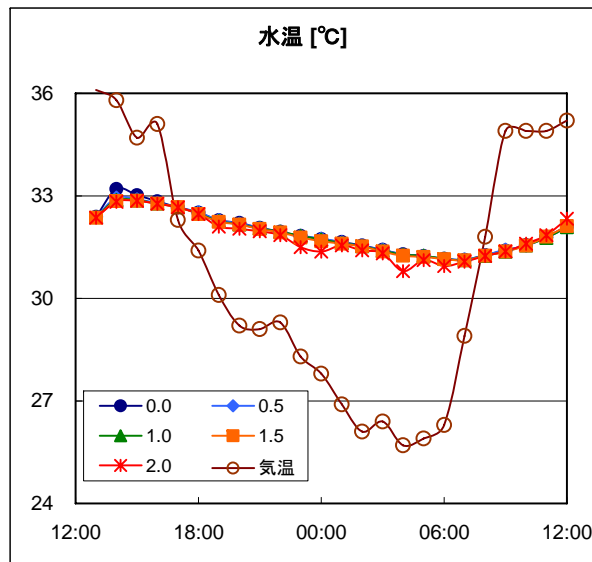


図5-9(4) 日間調査結果(対照池・実証対象機器稼働後(8月10~11日))

凡例の数字は水深(m)

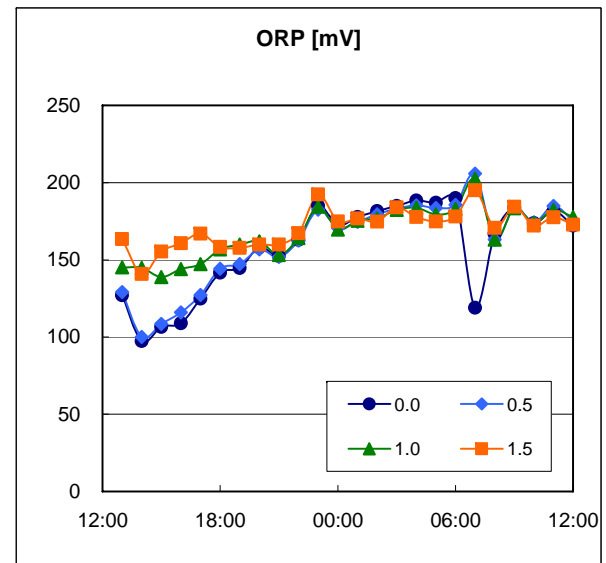
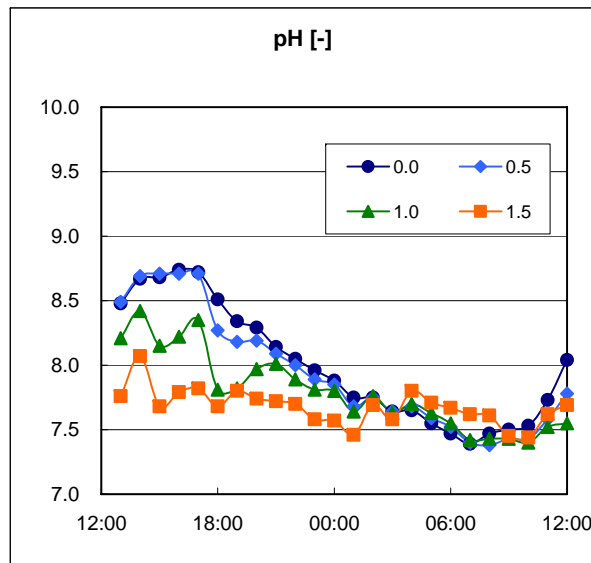
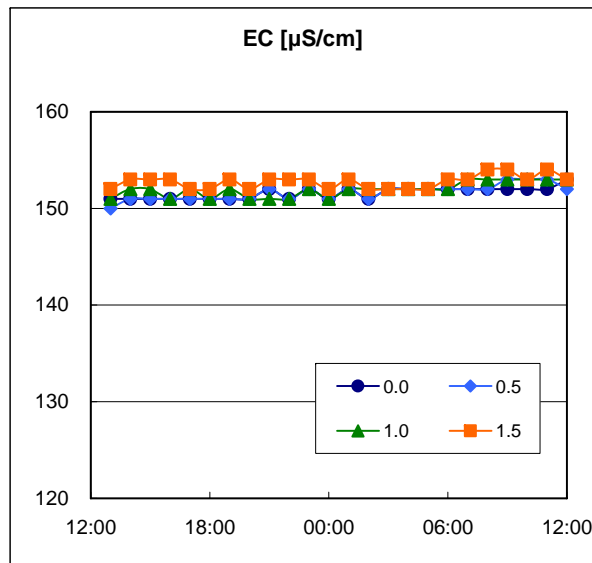
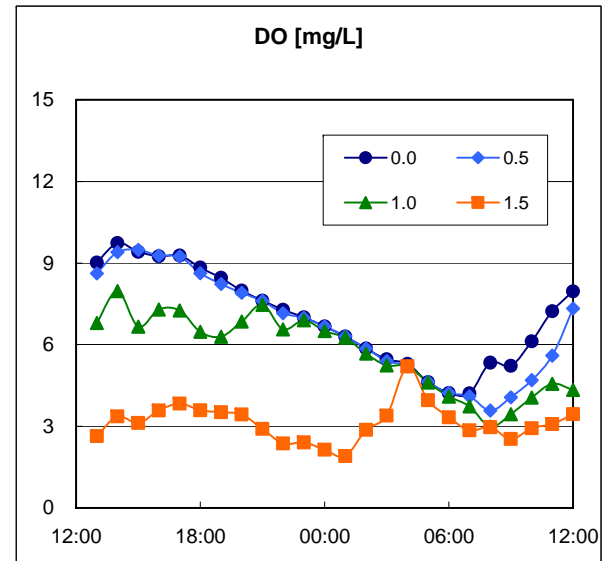
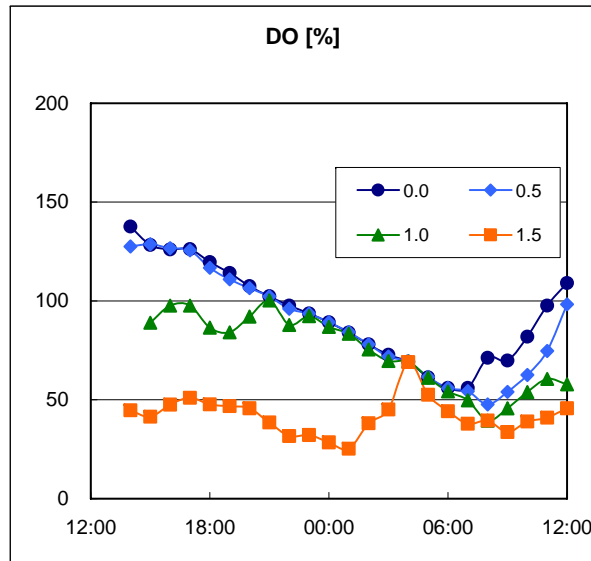
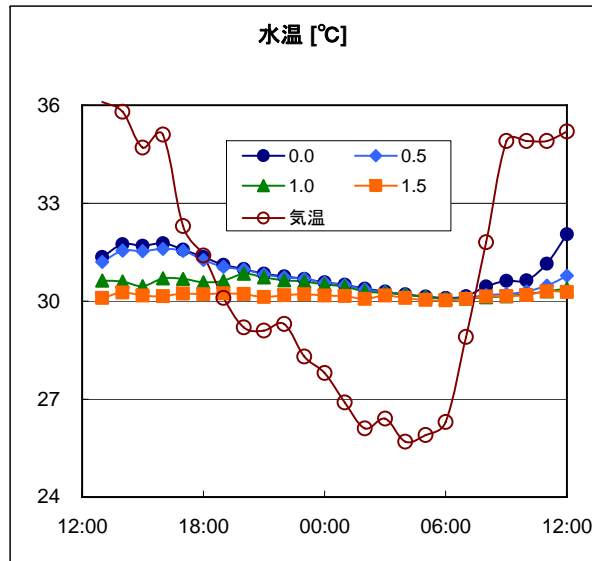


表5-5(1) 日間調査結果(実証池・実証対象機器稼動前(7月28~29日))

	天候	気温 ℃	照度 lux	湿度 %	風向 -	風速 m/s	水温 ℃					DO %					DO mg/L					EC μS/cm					pH -					ORP mV				
							0.0	0.5	1.0	1.5	2.0	0.0	0.5	1.0	1.5	2.0	0.0	0.5	1.0	1.5	2.0	0.0	0.5	1.0	1.5	2.0	0.0	0.5	1.0	1.5	2.0	0.0	0.5	1.0	1.5	2.0
							水深(m)																													
13:00	晴	35.6	-	36.9	南西	1.1			28.90	28.28	27.70			120.7	116.9	79.1			9.30	9.11	6.23			122	122	122			8.77	8.81	7.97			75.7	79.8	65.6
14:00	晴	32.5	-	46.7	南	2.2	31.93	31.18	28.81	28.30	27.63	121.4	126.4	129.5	125.5	76.2	8.87	9.35	9.98	9.77	6.01	124	124	122	122	122	8.74	8.86	9.01	9.00	8.13	110.8	115.5	116.9	121.9	149.6
15:00	晴	34.3	-	46.7	西	0.6	31.86	30.36	29.11	28.46	27.83	124.8	135.5	132.5	128.5	96.5	9.13	10.17	10.18	9.97	7.56	124	124	123	122	122	8.59	8.87	8.99	8.99	8.32	123.7	122.9	125.2	129.0	160.9
16:00	晴	32.7	-	50.6	南西	1.1	32.11	30.04	29.17	28.48	27.96	126.6	138.4	136.7	130.2	101.3	9.22	10.46	10.47	10.10	7.94	124	123	123	122	122	8.69	9.01	9.07	9.07	8.37	120.4	120.0	125.3	130.6	165.8
17:00	晴	33.1	-	54.1	南西	1.3	32.04	30.23	29.02	28.57	27.96	123.2	144.4	136.9	130.4	91.2	8.99	10.87	10.52	10.10	7.15	124	124	123	122	123	8.76	9.12	9.13	9.10	8.41	146.5	137.0	139.2	141.8	165.9
18:00	晴	32.9	1070	57.7	-	0.0	31.42	30.15	29.25	28.67	28.25	128.5	139.9	141.5	137.5	101.2	9.49	10.55	10.84	10.64	7.91	124	123	123	122	122	8.78	8.97	9.06	9.06	8.59	131.4	128.0	127.2	129.5	149.5
19:00	晴	29.1	0	66.0	西	0.5	30.98	30.46	29.21	28.64	28.29	124.3	140.2	130.5	123.2	93.3	9.22	10.53	10.03	9.54	7.28	124	124	123	122	123	8.75	8.99	9.13	9.06	8.76	127.8	125.9	127.5	134.6	145.1
20:00	晴	28.7	0	69.2	-	0.0	30.52	30.00	29.17	28.52	28.20	125.7	141.6	132.3	124.1	96.5	9.42	10.71	10.16	9.63	7.53	124	124	123	122	123	8.64	8.91	8.99	8.92	8.40	147.1	141.2	142.8	147.7	165.3
21:00	晴	27.1	0	81.0	-	0.0	30.20	30.38	29.33	28.55	28.27	119.5	130.3	130.2	120.2	101.9	8.98	9.78	10.00	9.32	7.95	124	124	123	122	123	8.77	8.93	9.04	8.95	8.65	145.6	142.3	142.4	146.8	161.5
22:00	晴	27.5	0	75.1	北西	1.0	29.78	30.28	29.24	28.58	28.26	121.9	125.6	130.8	116.2	88.1	9.26	9.45	10.02	9.00	6.88	124	124	123	122	123	8.54	8.74	8.97	8.84	8.25	127.6	130.8	131.2	140.4	168.9
23:00	晴	27.3	0	75.1	北西	1.1	29.63	30.04	29.35	28.49	28.09	120.9	123.6	130.8	113.4	80.5	9.18	9.34	10.00	8.80	6.29	124	124	123	123	124	8.45	8.67	8.82	8.65	8.02	159.7	155.2	152.0	162.7	188.5
00:00	晴	26.4	0	80.4	西	0.5	29.74	29.82	29.03	28.50	27.96	119.9	120.5	126.4	115.8	68.9	9.10	9.13	9.71	8.98	5.39	124	124	122	122	125	8.46	8.67	8.85	8.71	7.98	151.5	150.3	149.2	158.5	180.9
01:00	晴	25.8	0	88.0	南西	1.0	29.24	29.64	28.91	28.52	28.07	119.4	121.3	124.4	105.1	68.8	9.14	9.22	9.58	8.15	5.38	124	124	122	122	125	8.48	8.69	8.89	8.59	7.81	142.5	142.3	146.9	164.4	194.6
02:00	晴	25.8	0	90.3	西	0.4	29.26	29.46	29.28	28.53	28.15	121.8	120.2	122.5	105.7	73.1	9.30	9.17	9.37	8.22	5.70	124	123	123	122	125	8.51	8.58	8.66	8.38	7.87	159.7	160.8	161.4	179.3	201.2
03:00	晴	24.9	0	92.1	-	0.0	29.04	29.30	29.02	28.53	28.20	119.2	119.6	119.6	97.8	68.2	9.17	9.15	9.19	7.59	5.32	123	123	123	123	124	8.22	8.50	8.61	8.28	7.72	164.0	163.3	166.7	186.2	207.8
04:00	晴	24.7	0	97.1	-	0.0	28.96	29.23	29.07	28.52	28.24	115.6	118.0	119.2	92.6	58.8	8.89	9.04	9.16	7.18	4.58	123	123	123	123	124	8.38	8.56	8.63	8.22	7.79	170.4	170.8	172.5	195.7	211.8
05:00	晴	24.1	240	95.8	-	0.0	28.86	28.99	29.02	28.57	28.12	113.8	113.7	118.9	91.7	51.4	8.77	8.74	9.13	7.11	4.02	123	123	123	123	125	8.17	8.41	8.52	8.27	7.67	167.4	173.9	177.4	195.5	218.3
06:00	晴	24.9	854	97.7	東	0.5	28.81	29.00	28.96	28.48	28.13	114.2	114.8	116.2	81.7	47.7	8.82	8.82	8.94	6.33	3.73	123	123	123	123	125	8.24	8.39	8.47	8.11	7.71	180.4	181.4	184.4	205.8	220.0
07:00	晴	28.0	-	80.6	-	0.0	29.14	29.09	29.01	28.54	28.05	116.2	116.7	113.8	86.1	31.9	8.90	8.95	8.74	6.66	2.49	123	123	123	123	127	8.27	8.38	8.45	8.08	7.59	174.3	176.0	180.9	205.6	212.5
08:00	晴	32.8	-	53.6	北東	0.5	29.50	29.22	29.07	28.64	28.04	119.3	116.9	113.5	85.0	29.7	9.09	8.96	8.72	6.58	2.32	124	123	123	124	127	8.37	8.50	8.52	8.08	7.41	163.4	172.2	181.2	207.1	224.0
09:00	晴	33.2	-	41.4	西	1.0	29.82	29.37	29.18	28.74	28.03	123.6	122.3	118.6	103.0	30.7	9.37	9.34	9.09	7.95	2.40	124	123	123	123	127	8.43	8.59	8.66	8.34	7.40	183.1	187.8	194.5	216.8	242.9
10:00	晴	34.1	-	37.0	西	2.2	30.54	30.44	29.28	28.75	28.19	125.9	128.5	123.0	106.4	44.7	9.41	9.64	9.41	8.22	3.49	124	124	123	123	126	8.53	8.71	8.76	8.20	7.44	168.6	174.1	185.2	231.4	199.9
11:00	晴	34.7	-	30.3	西	1.3	31.24	30.01	29.56	29.07	28.45	131.3	130.5	131.0	124.7	66.8	9.72	9.85	9.98	9.58	5.18	124	124	124	123	125	8.52	8.79	8.89	8.78	8.02	183.8	187.2	190.0	199.7	234.3
12:00	晴	35.5	-	30.7	西	3.2	31.69	31.55	29.76	29.19	28.44	131.5	130.5	132.8	126.0	70.0	9.66	9.59	10.09	9.66	5.43	124	124	124	123	124	8.82	8.88	8.99	8.86	7.73	178.2	180.8	186.5	198.4	242.6

表5-5 (2) 日間変動の調査結果 (対照池・実証対象機器稼動前 (7月28~29日))

	天候	気温	照度	湿度	風向	風速	水温					DO					DO					EC					pH					ORP				
		°C	lux	%	-	m/s	°C					%					mg/L					μS/cm					-					mV				
水深 [m]							0.0	0.5	1.0	1.5	2.0	0.0	0.5	1.0	1.5	2.0	0.0	0.5	1.0	1.5	2.0	0.0	0.5	1.0	1.5	2.0	0.0	0.5	1.0	1.5	2.0	0.0	0.5	1.0	1.5	2.0
13:00	晴	35.6	-	36.9	南西	1.1	30.60	28.26	27.74	27.34	27.27	156.0	143.0	115.1	71.5	52.0	11.66	11.14	9.04	5.66	4.12	142	142	141	142	143	9.00	8.91	8.59	8.13	7.80	104.9	116.9	117.5	119.1	96.3
14:00	晴	32.5	-	46.7	南	2.2	30.65	28.91	27.72	27.27	27.19	156.8	163.5	128.1	64.4	46.7	11.72	12.60	10.06	5.11	3.71	142	142	142	142	143	8.96	9.05	8.60	7.80	7.61	124.6	128.2	150.9	161.9	105.6
15:00	晴	34.3	-	46.7	西	0.6	31.02	28.70	27.77	27.32	27.19	158.9	161.3	129.0	66.6	47.3	11.80	12.47	10.13	5.27	3.76	142	142	141	142	143	8.91	9.05	8.50	7.83	7.58	134.7	135.0	164.2	182.6	177.6
16:00	晴	32.7	-	50.6	南西	1.1	31.13	28.64	27.67	27.34	27.21	156.2	168.0	116.8	74.3	47.0	11.56	12.99	9.19	5.88	3.73	142	142	142	142	143	8.98	9.19	8.54	7.93	7.68	136.8	136.5	165.7	186.2	187.5
17:00	晴	33.1	-	54.1	南西	1.3	31.00	28.93	27.77	27.37	27.23	155.0	162.9	108.0	66.7	46.8	11.51	12.54	8.48	5.28	3.71	142	142	142	142	143	9.01	9.14	8.45	7.95	7.79	135.6	137.6	166.8	186.4	189.0
18:00	晴	32.9	1070	57.7	-	0.0	30.48	28.93	28.01	27.37	27.25	153.5	156.9	111.7	70.0	42.7	11.51	12.07	8.79	5.54	3.38	142	142	142	142	143	9.01	9.07	8.45	8.04	7.80	130.7	132.0	158.6	175.9	180.9
19:00	晴	29.1	0	66.0	西	0.5	30.30	29.32	27.94	27.45	27.19	149.9	152.2	111.8	70.6	41.3	11.26	11.68	8.78	5.58	3.28	142	142	142	142	143	8.75	8.87	8.47	7.87	7.62	121.5	128.0	148.0	173.6	175.4
20:00	晴	28.7	0	69.2	-	0.0	29.92	28.80	27.76	27.42	27.25	137.4	144.5	108.1	62.8	51.5	10.41	11.15	8.50	4.98	4.09	142	142	142	142	142	8.82	8.90	8.34	7.72	7.61	148.5	149.3	176.1	194.0	194.5
21:00	晴	27.1	0	81.0	-	0.0	29.56	29.09	27.92	27.43	27.22	134.3	143.3	109.1	52.0	41.3	10.23	11.00	8.56	4.12	3.28	143	142	142	142	143	8.81	8.86	8.32	7.65	7.56	149.4	150.3	174.7	196.9	196.7
22:00	晴	27.5	0	75.1	北西	1.0	29.31	28.95	27.75	27.32	27.22	136.9	135.1	102.1	57.6	37.7	10.47	10.40	8.02	4.56	3.00	142	142	142	142	143	8.70	8.67	8.17	7.64	7.49	145.0	148.2	175.1	192.6	193.7
23:00	晴	27.3	0	75.1	北西	1.1	29.27	28.95	27.77	27.31	27.19	140.8	130.0	97.4	55.0	27.4	10.77	10.01	7.67	4.36	2.17	142	143	142	142	143	8.74	8.61	8.02	7.68	7.44	156.7	164.0	192.0	202.9	202.7
00:00	晴	26.4	0	80.4	西	0.5	29.12	29.02	27.79	27.29	27.16	137.4	128.4	100.6	46.9	21.7	10.54	9.87	7.90	3.71	1.72	142	142	142	142	144	8.65	8.59	8.10	7.60	7.41	157.7	164.1	189.1	204.8	204.2
01:00	晴	25.8	0	88.0	南西	1.0	28.77	28.84	27.86	27.31	27.16	132.0	123.2	96.9	44.3	18.9	10.19	9.49	7.61	3.51	1.50	142	142	142	142	144	8.48	8.56	8.06	7.52	7.31	165.0	171.0	195.2	210.5	209.9
02:00	晴	25.8	0	90.3	西	0.4	28.62	28.76	27.83	27.32	27.16	129.0	123.2	90.7	43.2	16.1	9.99	9.51	7.12	3.42	1.28	142	142	142	142	144	8.39	8.46	7.99	7.40	7.27	177.7	181.6	205.5	219.8	212.0
03:00	晴	24.9	0	92.1	-	0.0	28.55	28.65	27.84	27.36	27.16	123.8	119.7	90.2	39.9	14.7	9.59	9.25	7.08	3.15	1.17	142	142	142	143	145	8.22	8.25	7.89	7.53	7.35	185.9	191.4	211.7	222.9	223.7
04:00	晴	24.7	0	97.1	-	0.0	28.40	28.51	27.80	27.32	27.15	115.6	112.7	86.3	38.9	13.5	8.97	8.74	6.77	3.08	1.07	142	142	142	142	145	8.10	8.12	7.83	7.45	7.30	201.3	204.3	220.6	231.0	229.9
05:00	晴	24.1	240	95.8	-	0.0	28.29	28.33	27.79	27.35	27.19	111.1	112.9	82.6	38.0	11.0	8.64	8.78	6.48	3.00	0.87	142	142	142	143	145	7.98	8.02	7.72	7.45	7.31	199.9	204.9	224.5	234.0	234.8
06:00	晴	24.9	854	97.7	東	0.5	28.25	28.29	27.78	27.36	27.17	116.5	116.7	79.7	37.0	10.8	9.08	9.07	6.25	2.92	0.86	142	142	142	142	144	8.05	8.10	7.88	7.54	7.33	200.2	205.5	221.3	233.9	232.5
07:00	晴	28.0	-	80.6	-	0.0	28.58	28.30	27.88	27.37	27.23	126.6	112.2	85.7	31.4	17.8	9.81	8.72	6.71	2.48	1.42	142	142	142	143	145	8.16	8.07	7.78	7.47	7.32	201.9	212.9	229.8	240.6	230.5
08:00	晴	32.8	-	53.6	北東	0.5	28.77	28.46	27.88	27.41	27.25	129.7	118.3	85.7	36.2	15.4	10.01	9.18	6.72	2.87	1.22	142	142	142	143	144	8.16	8.13	7.77	7.41	7.27	194.9	211.1	232.2	243.9	242.9
09:00	晴	33.2	-	41.4	西	1.0	29.17	28.56	28.04	27.46	27.28	135.0	125.1	91.3	39.1	15.8	10.32	9.69	7.14	3.09	1.26	143	142	142	143	144	8.22	8.19	7.82	7.39	7.27	203.9	216.4	238.1	253.3	238.9
10:00	晴	34.1	-	37.0	西	2.2	29.93	28.89	28.24	27.50	27.31	149.8	139.3	127.6	43.8	19.6	11.33	10.73	9.95	3.46	1.56	142	142	142	143	144	8.31	8.50	8.25	7.51	7.34	181.3	191.7	216.1	245.3	247.7
11:00	晴	34.7	-	30.3	西	1.3	30.10	29.34	28.27	27.61	27.40	155.1	149.5	130.6	60.4	28.4	11.72	11.43	10.18	4.76	2.26	142	142	142	143	144	8.63	8.72	8.45	7.69	7.50	181.4	191.1	214.9	248.4	217.7
12:00	晴	35.5	-	30.7	西	3.2	30.82	29.41	28.35	27.59	27.41	163.4	160.2	123.0	54.0	29.0	12.19	12.22	9.61	4.26	2.29	142	142	142	143	143	8.71	8.83	8.36	7.81	7.62	189.2	191.5	224.7	250.2	254.1

表5-5(3) 日間調査結果(実証池・実証対象機器稼動後(8月10~11日))

	天候	気温 ℃	照度 lux	湿度 %	風向 -	風速 m/s	水温 ℃					DO %					DO mg/L					EC μS/cm					pH -					ORP mV				
							0.0	0.5	1.0	1.5	2.0	0.0	0.5	1.0	1.5	2.0	0.0	0.5	1.0	1.5	2.0	0.0	0.5	1.0	1.5	2.0	0.0	0.5	1.0	1.5	2.0	0.0	0.5	1.0	1.5	2.0
水深(m)							0.0	0.5	1.0	1.5	2.0	0.0	0.5	1.0	1.5	2.0	0.0	0.5	1.0	1.5	2.0	0.0	0.5	1.0	1.5	2.0	0.0	0.5	1.0	1.5	2.0	0.0	0.5	1.0	1.5	2.0
13:00	晴	36.1	-	39.7	北	4.5	32.39	32.38	32.38	32.36	32.36						7.65	7.49	7.39	7.35	7.29	131	131	131	131	131	8.69	8.70	8.73	8.73	8.77	117.0	118.0	119.9	121.2	121.2
14:00	晴	35.8	-	39.9	北	4.3	33.20	32.95	32.88	32.85	32.83	107.6	107.0	106.7	106.4	106.0	7.71	7.69	7.68	7.66	7.65	131	132	132	132	132	8.63	8.70	8.76	8.76	8.81	76.8	86.4	92.8	97.9	99.1
15:00	晴	34.7	-	45.0	南	1.6	33.02	32.90	32.87	32.86	32.86	110.4	109.5	108.5	108.5	107.9	7.93	7.88	7.81	7.81	7.76	131	132	132	132	132	8.73	8.80	8.83	8.85	8.86	82.6	87.5	92.2	95.9	97.1
16:00	晴	35.1	-	47.0	西	1.8	32.84	32.79	32.78	32.77	32.77	110.0	108.7	108.6	108.2	107.1	7.92	7.83	7.83	7.80	7.74	132	132	132	132	132	8.75	8.82	8.85	8.88	8.87	91.2	96.9	101.8	105.0	105.4
17:00	晴	32.3	-	55.3	南	1.6	32.66	32.67	32.67	32.67	32.66	109.0	108.2	108.0	107.5	106.5	7.88	7.81	7.80	7.76	7.69	132	132	132	132	132	8.78	8.83	8.87	8.88	8.89	107.3	109.5	111.1	115.9	116.4
18:00	晴	31.4	-	60.6	南西	1.0	32.51	32.52	32.48	32.47	32.47	105.2	105.6	105.0	105.1	104.3	7.62	7.64	7.61	7.62	7.56	132	132	132	132	132	8.90	8.89	8.87	8.84	8.81	112.2	109.7	106.8	106.1	101.6
19:00	晴	30.1	-	66.3	南西	1.6	32.29	32.30	32.27	32.24	32.10	100.4	100.6	100.8	101.0	100.8	7.30	7.31	7.33	7.35	7.34	132	132	132	132	131	8.81	8.80	8.78	8.77	8.68	117.7	115.7	122.9	109.9	106.6
20:00	曇	29.2	-	68.5	西	1.2	32.21	32.19	32.17	32.16	32.04	97.7	97.6	97.6	97.7	96.9	7.12	7.10	7.11	7.12	7.07	131	131	131	131	131	8.78	8.78	8.76	8.73	8.69	119.0	115.9	114.0	112.1	107.2
21:00	曇	29.1	-	73.2	西	0.0	32.07	32.07	32.05	32.03	31.97	93.7	93.8	94.0	94.2	93.7	6.84	6.84	6.86	6.87	6.85	131	131	131	131	131	8.71	8.70	8.69	8.68	8.64	126.5	122.8	118.9	116.5	113.5
22:00	曇	29.3	-	68.6	西	1.0	31.95	31.94	31.95	31.93	31.85	90.9	90.9	90.8	91.3	90.9	6.65	6.65	6.64	6.67	6.66	131	131	131	131	131	8.64	8.64	8.63	8.60	8.57	131.1	128.7	127.1	125.1	119.7
23:00	雨	28.3	-	82.4	北西	0.6	31.83	31.83	31.83	31.78	31.50	87.7	87.5	87.4	87.2	86.7	6.42	6.41	6.40	6.39	6.39	131	131	132	132	131	8.57	8.56	8.55	8.50	8.46	163.8	163.4	163.3	164.6	164.0
00:00	曇	27.8	-	91.9	-	0.0	31.74	31.75	31.72	31.67	31.37	85.7	85.9	85.7	85.5	85.6	6.29	6.30	6.29	6.28	6.32	131	131	131	131	131	8.47	8.44	8.41	8.38	8.28	139.4	138.9	136.9	134.5	133.7
01:00	曇	26.9	-	94.7	-	0.0	31.65	31.64	31.62	31.60	31.55	83.3	83.2	83.1	83.2	83.3	6.12	6.11	6.11	6.12	6.14	132	132	132	131	131	8.35	8.33	8.29	8.25	8.20	140.9	138.2	134.4	132.9	128.2
02:00	晴	26.1	-	95.0	西	0.5	31.55	31.53	31.53	31.52	31.41	80.9	81.0	81.1	81.1	81.0	5.96	5.96	5.96	5.97	5.97	131	131	131	131	131	8.29	8.30	8.29	8.27	8.26	155.0	152.5	150.5	149.3	145.7
03:00	晴	26.4	-	91.9	-	0.0	31.42	31.43	31.40	31.37	31.32	78.7	78.8	78.9	78.9	78.7	5.80	5.81	5.82	5.83	5.81	131	131	131	131	131	8.20	8.20	8.19	8.18	8.18	153.7	151.1	149.2	147.1	143.7
04:00	晴	25.7	-	92.6	-	0.0	31.29	31.28	31.28	31.25	30.80	76.9	76.8	77.0	77.3	77.0	5.68	5.68	5.69	5.72	5.73	131	132	132	132	132	8.12	8.12	8.10	8.10	8.08	153.5	149.9	148.2	145.0	140.8
05:00	曇	25.9	36	94.7	-	0.0	31.24	31.25	31.25	31.21	31.12	74.6	74.7	74.7	75.2	75.4	5.52	5.52	5.52	5.57	5.59	131	131	131	131	131	8.03	8.05	8.04	8.04	8.04	169.4	166.6	163.0	155.9	146.6
06:00	曇	26.3	389	92.1	-	0.0	31.16	31.15	31.16	31.15	30.95	73.4	73.7	73.3	73.7	73.9	5.44	5.46	5.43	5.46	5.48	132	132	132	132	132	7.97	7.99	7.98	7.98	8.01	166.9	163.5	160.0	157.1	150.4
07:00	曇	28.9	1602	84.3	-	0.0	31.13	31.14	31.12	31.11	31.08	74.2	74.3	74.2	74.1	73.6	5.50	5.50	5.50	5.49	5.46	131	131	131	131	131	7.98	7.99	7.99	7.98	8.01	201.8	201.1	200.8	201.3	199.0
08:00	晴	31.8	1854	61.2	西	1.5	31.27	31.26	31.25	31.25	31.24	80.5	80.4	80.3	79.9	78.5	5.95	5.95	5.94	5.91	5.81	131	131	131	131	131	8.13	8.12	8.13	8.10	8.12	168.1	167.1	166.0	166.2	163.9
09:00	晴	34.9	-	51.4	北西	1.1	31.40	31.43	31.37	31.37	31.38	84.9	85.1	84.2	83.8	83.4	6.26	6.27	6.21	6.19	6.16	132	132	132	132	132	8.25	8.25	8.20	8.14	8.19	166.9	165.2	161.8	159.1	158.7
10:00	晴	34.9	-	54.5	-	0.0	31.56	31.54	31.55	31.54	31.60	88.4	88.5	88.3	87.9	87.0	6.51	6.51	6.50	6.47	6.40	132	132	132	132	132	8.35	8.34	8.32	8.29	8.24	155.2	152.7	149.8	148.4	144.7
11:00	晴	34.9	-	48.9	西	2.1	31.80	31.78	31.77	31.81	31.85	93.0	93.1	92.8	93.1	91.6	6.81	6.82	6.80	6.82	6.70	132	132	132	132	132	8.48	8.48	8.45	8.38	8.32	148.3	146.1	145.3	141.3	135.0
12:00	晴	35.2	-	40.1	西	0.6	32.12	32.08	32.09	32.12	32.33	97.9	98.2	98.0	97.8	97.5	7.14	7.16	7.14	7.13	7.08	132	132	132	132	131	8.63	8.59	8.57	8.53	8.45	138.5	134.8	132.4	129.9	123.7

表5-5(4) 日間調査結果(対照池・実証対象機器稼動後(8月10~11日))

	天候	気温	照度	湿度	風向	風速	水温					DO					DO					EC					pH					ORP				
		°C	lux	%	-	m/s	°C					%					mg/L					μS/cm					-					mV				
水深[m]							0.0	0.5	1.0	1.5	2.0	0.0	0.5	1.0	1.5	2.0	0.0	0.5	1.0	1.5	2.0	0.0	0.5	1.0	1.5	2.0	0.0	0.5	1.0	1.5	2.0	0.0	0.5	1.0	1.5	2.0
13:00	晴	36.1	-	39.7	北	4.5	31.35	31.20	30.63	30.10						9.01	8.62	6.80	2.64		151	150	151	152		8.48	8.49	8.21	7.76		127.1	129.1	145.1	163.5		
14:00	晴	35.8	-	39.9	北	4.3	31.74	31.55	30.60	30.26		137.6	127.6		44.7	9.74	9.40	7.97	3.36		151	151	152	153		8.67	8.69	8.42	8.07		97.3	100.0	144.9	140.9		
15:00	晴	34.7	-	45.0	南	1.6	31.70	31.53	30.46	30.17		128.3	128.6	88.9	41.4	9.41	9.48	6.66	3.12		151	151	152	153		8.68	8.71	8.15	7.68		106.6	108.5	138.8	155.3		
16:00	晴	35.1	-	47.0	西	1.8	31.77	31.60	30.70	30.15		126.1	126.7	97.6	47.5	9.25	9.28	7.29	3.58		151	151	151	153		8.74	8.71	8.22	7.79		109.0	115.9	144.0	160.8		
17:00	晴	32.3	-	55.3	南	1.6	31.58	31.54	30.68	30.23		126.2	125.5	97.6	51.0	9.28	9.24	7.26	3.83		151	151	152	152		8.72	8.71	8.35	7.82		124.8	127.3	147.2	166.9		
18:00	晴	31.4	-	60.6	南西	1.0	31.35	31.26	30.58	30.21		119.6	116.8	86.5	47.6	8.83	8.63	6.47	3.59		151	151	151	152		8.51	8.27	7.81	7.68		141.7	144.2	156.7	158.4		
19:00	晴	30.1	-	66.3	南西	1.6	31.11	31.05	30.62	30.24		114.1	110.9	84.1	46.8	8.46	8.23	6.29	3.52		151	151	152	153		8.34	8.18	7.82	7.80		144.7	147.3	159.9	157.7		
20:00	曇	29.2	-	68.5	西	1.2	30.98	30.97	30.84	30.22		107.5	106.4	92.1	45.6	7.99	7.91	6.85	3.43		151	151	151	152		8.29	8.19	7.97	7.74		158.1	156.7	162.0	160.0		
21:00	曇	29.1	-	73.2	西	0.0	30.84	30.82	30.73	30.13		102.4	102.2	100.2	38.5	7.62	7.61	7.46	2.90		152	152	151	153		8.14	8.09	8.01	7.72		152.4	151.8	153.1	159.9		
22:00	曇	29.3	-	68.6	西	1.0	30.76	30.73	30.64	30.18		97.7	96.0	87.8	31.6	7.28	7.16	6.56	2.37		151	151	151	153		8.05	8.00	7.89	7.70		162.9	162.5	164.1	167.2		
23:00	雨	28.3	-	82.4	北西	0.6	30.68	30.68	30.60	30.21		93.7	93.6	92.3	32.1	7.00	6.99	6.90	2.41		152	152	152	153		7.96	7.89	7.81	7.58		185.0	182.5	184.4	192.3		
00:00	曇	27.8	-	91.9	-	0.0	30.58	30.56	30.51	30.17		89.2	89.2	86.8	28.4	6.67	6.67	6.50	2.14		151	151	151	152		7.88	7.85	7.80	7.57		172.5	170.7	169.6	174.9		
01:00	曇	26.9	-	94.7	-	0.0	30.50	30.49	30.44	30.16		84.0	84.3	83.4	25.2	6.30	6.31	6.26	1.90		152	152	152	153		7.75	7.68	7.64	7.46		177.8	174.5	175.3	176.7		
02:00	晴	26.1	-	95.0	西	0.5	30.38	30.36	30.30	30.07		78.0	78.0	75.4	38.1	5.86	5.86	5.67	2.87		151	151	152	152		7.75	7.75	7.76	7.69		181.6	179.4	176.8	174.7		
03:00	晴	26.4	-	91.9	-	0.0	30.29	30.28	30.25	30.17		72.7	71.8	69.6	45.0	5.46	5.40	5.24	3.39		152	152	152	152		7.64	7.64	7.63	7.58		184.8	183.1	182.3	184.0		
04:00	晴	25.7	-	92.6	-	0.0	30.21	30.21	30.20	30.10		69.2	69.2	69.3	69.0	5.29	5.21	5.22	5.20		152	152	152	152		7.65	7.68	7.70	7.80		188.3	185.4	183.7	177.8		
05:00	曇	25.9	36	94.7	-	0.0	30.14	30.13	30.13	30.04		61.3	61.5	61.2	52.5	4.62	4.63	4.61	3.96		152	152	152	152		7.55	7.59	7.63	7.71		187.0	183.6	179.5	174.8		
06:00	曇	26.3	389	92.1	-	0.0	30.10	30.09	30.08	30.02		56.0	56.0	54.2	44.2	4.22	4.23	4.09	3.33		152	152	152	153		7.47	7.52	7.55	7.67		190.0	185.6	183.0	178.0		
07:00	曇	28.9	1602	84.3	-	0.0	30.15	30.10	30.08	30.07		55.9	54.3	49.7	37.8	4.21	4.10	3.73	2.85		152	152	153	153		7.39	7.40	7.42	7.62		118.9	205.8	202.5	195.0		
08:00	晴	31.8	1854	61.2	西	1.5	30.45	30.19	30.12	30.14		71.2	47.6	39.5	39.4	5.34	3.58	2.99	2.97		152	152	153	154		7.47	7.38	7.43	7.61		166.8	163.1	163.1	170.8		
09:00	晴	34.9	-	51.4	北西	1.1	30.62	30.22	30.15	30.15		69.9	54.0	45.7	33.6	5.22	4.07	3.44	2.53		152	153	153	154		7.50	7.43	7.43	7.45		183.9	183.6	183.4	184.4		
10:00	晴	34.9	-	54.5	-	0.0	30.64	30.30	30.22	30.19		81.9	62.5	53.8	38.9	6.12	4.70	4.06	2.93		152	153	153	153		7.53	7.43	7.40	7.44		173.7	174.3	174.0	172.2		
11:00	晴	34.9	-	48.9	西	2.1	31.15	30.47	30.30	30.30		97.6	74.7	60.6	41.0	7.23	5.60	4.56	3.08		152	153	153	154		7.73	7.58	7.52	7.62		181.5	184.8	182.3	177.5		
12:00	晴	35.2	-	40.1	西	0.6	32.05	30.78	30.39	30.28		109.1	98.3	57.8	45.7	7.96	7.33	4.34	3.44		153	152	153	153		8.04	7.78	7.55	7.69		172.1	175.4	177.8	172.8		