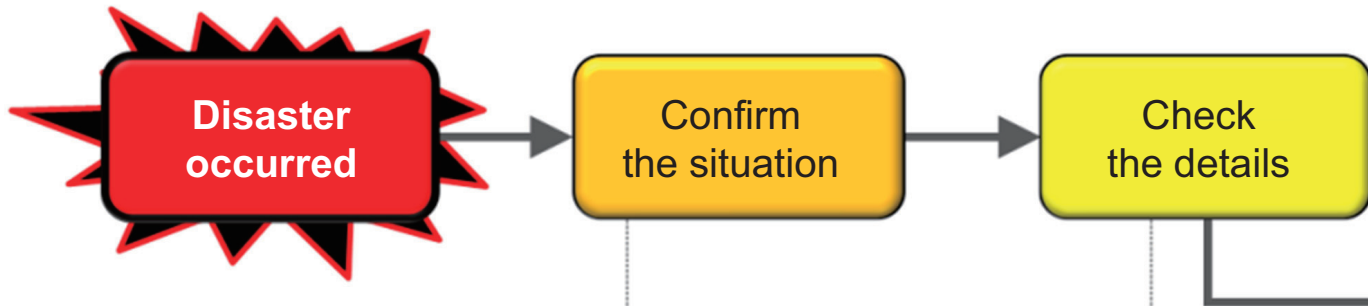


Measures after the Great East Japan Earthquake

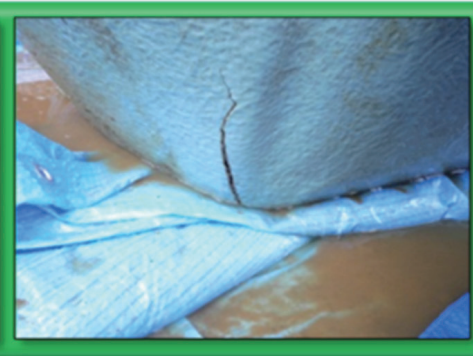
Several hours to several days after the disaster

Several days to several weeks after the disaster



- Johkasou users (residents, etc.) check the extent of damage.
- Whether damaged johkasou may cause fire whether the minimum level of public hygiene can be secured checked.

- A johkasou engineer (maintenance operator, etc.) confirms the details of damage to johkasou and its attachment.
- Whenever necessary, temporary measures are implemented to prevent danger and to regain treatment functions.



Example of other temporary measures

A hose is connected to the damaged air pipe.



A temporary manhole lid is installed to replace the lid that was swept away.

Roughly 3 months or shorter after the disaster



- If the johkasou itself is not severely damaged, temporary use is possible after a detailed check or other temporary measures.
- After temporary measures, bathrooms can be used, which substantially improve the evacuees' quality of life.

- If the original performance cannot be regained through temporary measures, will be conducted restoration work.
- Restoration work is executed to enable safe use of johkasou in the same way as before.



Photos provided by: Sendai City



These measures were swiftly implemented after the Great East Japan Earthquake, and restoration was completed for some facilities only one and a half months after the disaster struck.

Source: Iwate Prefecture Johkasou Inspection Center, Iwate Prefecture Johkasou Association
FY2011 Great East Japan Earthquake Johkasou Damage Emergency Survey Report (Iwate Prefecture) (FY2011)