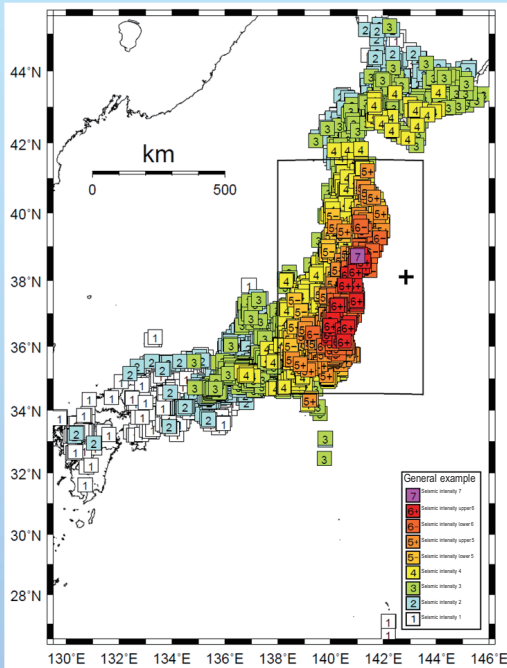


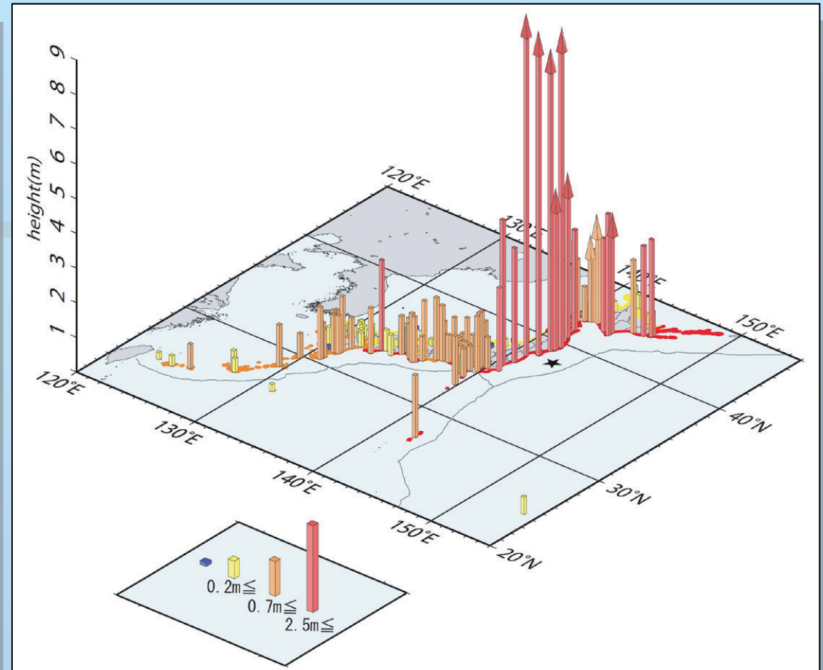
Status of Damage Caused by the Great East Japan Earthquake

The Great East Japan Earthquake with a magnitude 9 (seismic intensity 7), the highest ever recorded in Japan, occurred in March 2011. This powerful tremor extended across a wide range from Tohoku to Kanto and a tsunami exceeding 10m was also observed.

■ Distribution of seismic intensity (+ shows the epicenter)



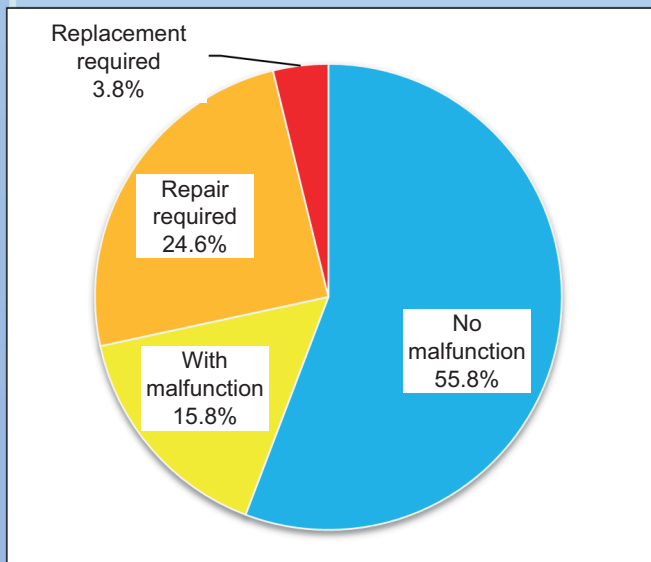
■ Height of tsunamis observed at tsunami observation centers



○ Source: Left figure) Meteorological Agency: Earthquake/Volcano Monthly Report, March 2011 (Disaster Prevention Edition) (2011)
Right figure) Meteorological Agency: Tohoku Region Pacific Coast Earthquake Survey Report, 2011 (2012)

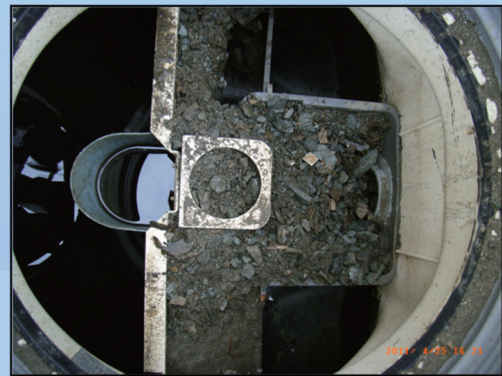
The Ministry of the Environment, Government of Japan surveyed damage to roughly 1,000 units of johkasou caused by the Great East Japan Earthquake. The earthquake was responsible for the largest scale of human and material destruction in Japan's postwar period, and many units of johkasou throughout the region were damaged. However, rate of Johkasou which required replacement is only 3.8%.

■ Status of johkasou damage caused by the Great East Japan Earthquake



○ Source: Ministry of the Environment, Government of Japan : Research report on damage situation of johkasou in the Great East Japan Earthquake, 2011

■ Inflow of sand and mud caused by a tsunami



■ Tank pushed up to the surface by liquefaction

