

# **Foodwaste Minimization and Recycling (FMR) in Korea**

**Presented by JoonKi Kim**

# Contents

- Why should we initiate the FMR?
- History of FMR Policy
- Status of Foodwaste Generation and Disposal
- System of FMR
- Foodwaste Disposal Process
- Where are we now?
- Issues & Countermeasures

# Why should we initiate the FMR?

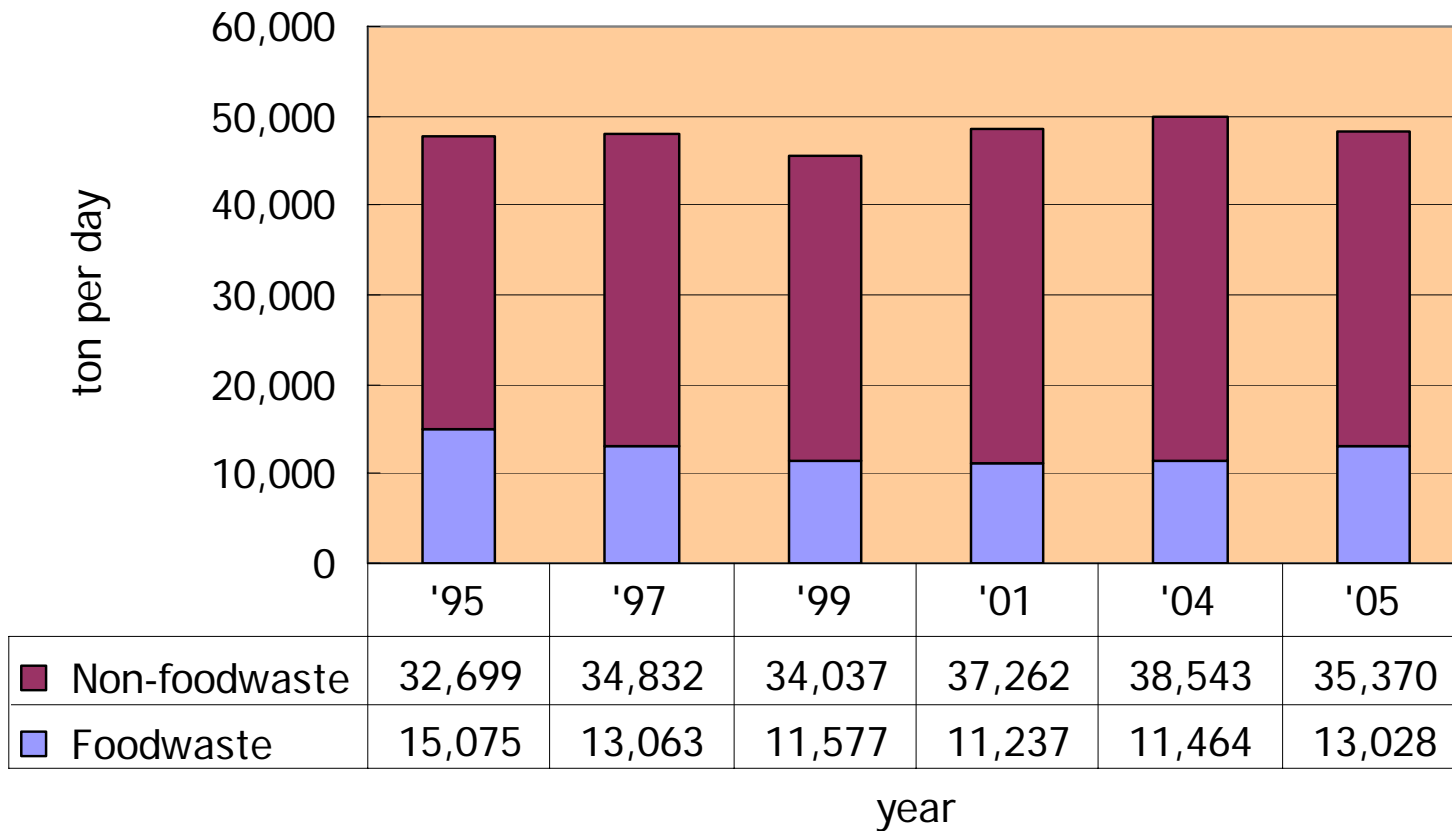
- Difficult to secure additional landfill sites
  - Due to rapid urbanization and NIMBY syndrome
  - Foodwaste share : 25% of non-industrial waste
- Second-hand pollution attributed to foodwaste landfilling
  - Land and groundwater pollution, malodor, infested with vermin
- Waste recyclable resources of foodwaste worthy of about USD 14.7billion dollars
  - Import 70% of grains(except rice) and 96% of livestock feed

# History of FMR Policy

- Establish Foodwaste Reduction Masterplan by Environment Conservation Committee in 1996
- Set the Standard Rules concerning foodwaste collection and transportation and separated collection system in 1997
- Establish Foodwaste Recycling Program('98~'02) in 1998 and Foodwaste Reduction and Recycling Program ('04~'07) in 2004
- Inhibit direct landfilling of foodwaste nationwide since Jan. 1, 2005 to promote FMR
  - Steer Foodwaste Forum May to Nov. 2005 to address and improve challenges after inhibiting direct landfilling of foodwaste
- Establish Foodwaste Comprehensive Plan in 2005 to change food culture and facilitate foodwaste minimization and recycling

# Status of Foodwaste Generation and Disposal(1)

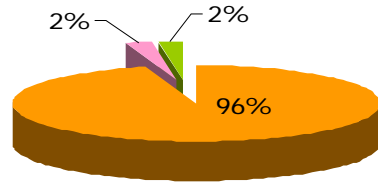
## ● Trend of foodwaste generation



# Status of Foodwaste Generation and Disposal(2)

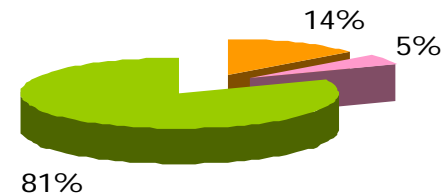
## ● Trend of foodwaste recycling

Disposal of foodwaste in 1995



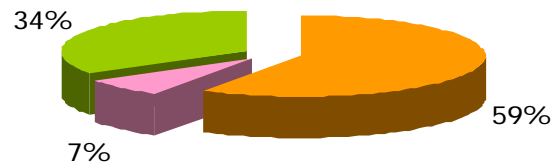
■ Lanfilling ■ Incineration ■ Recycling

Disposal of foodwaste in 2004



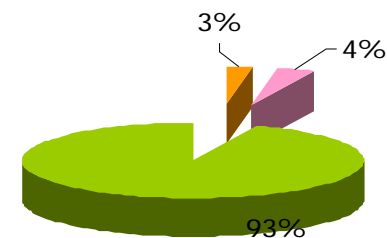
■ Lanfilling ■ Incineration ■ Recycling

Disposal of foodwaste in 1999



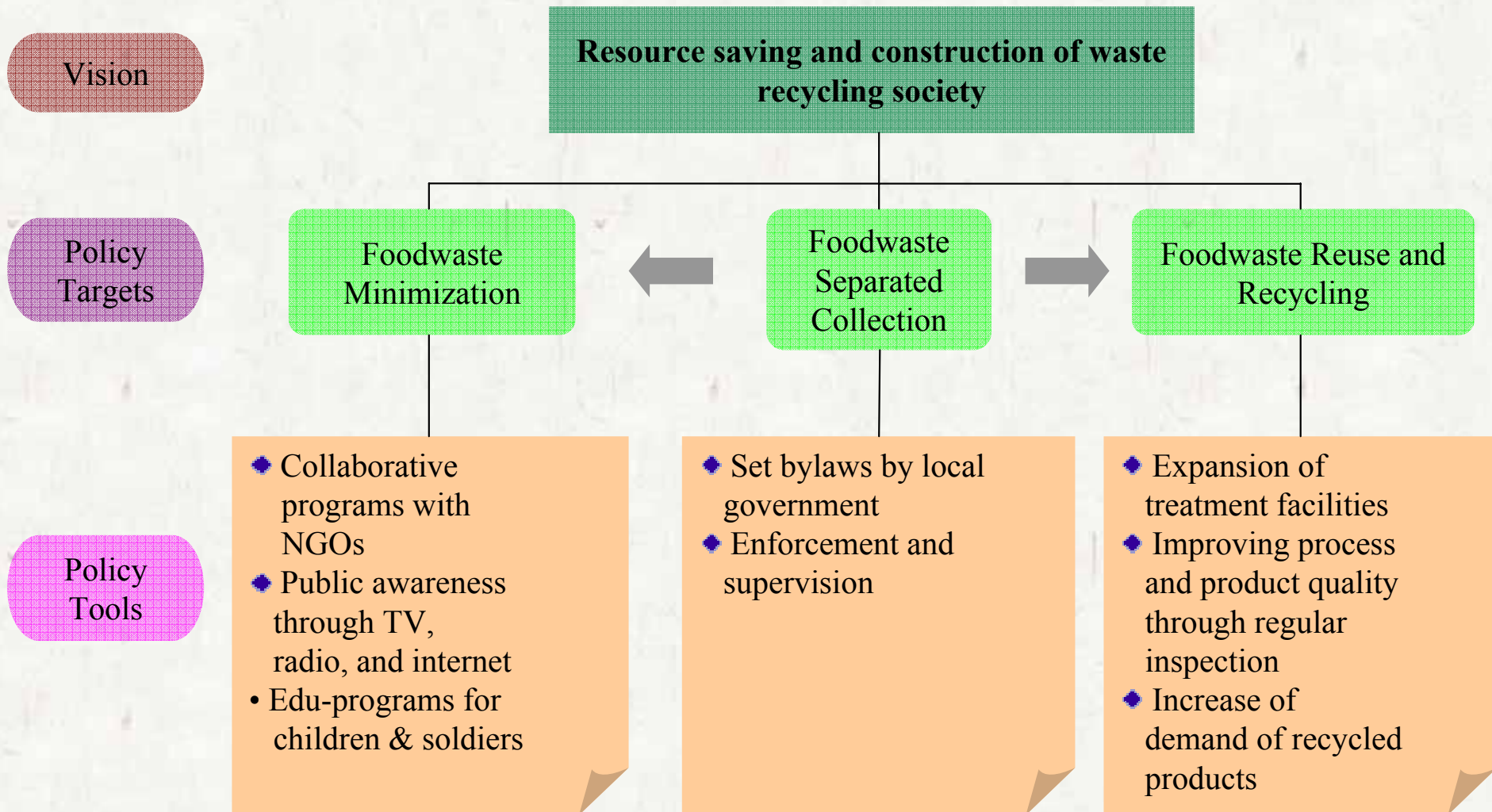
■ Lanfilling ■ Incineration ■ Recycling

Disposal of foodwaste in 2005

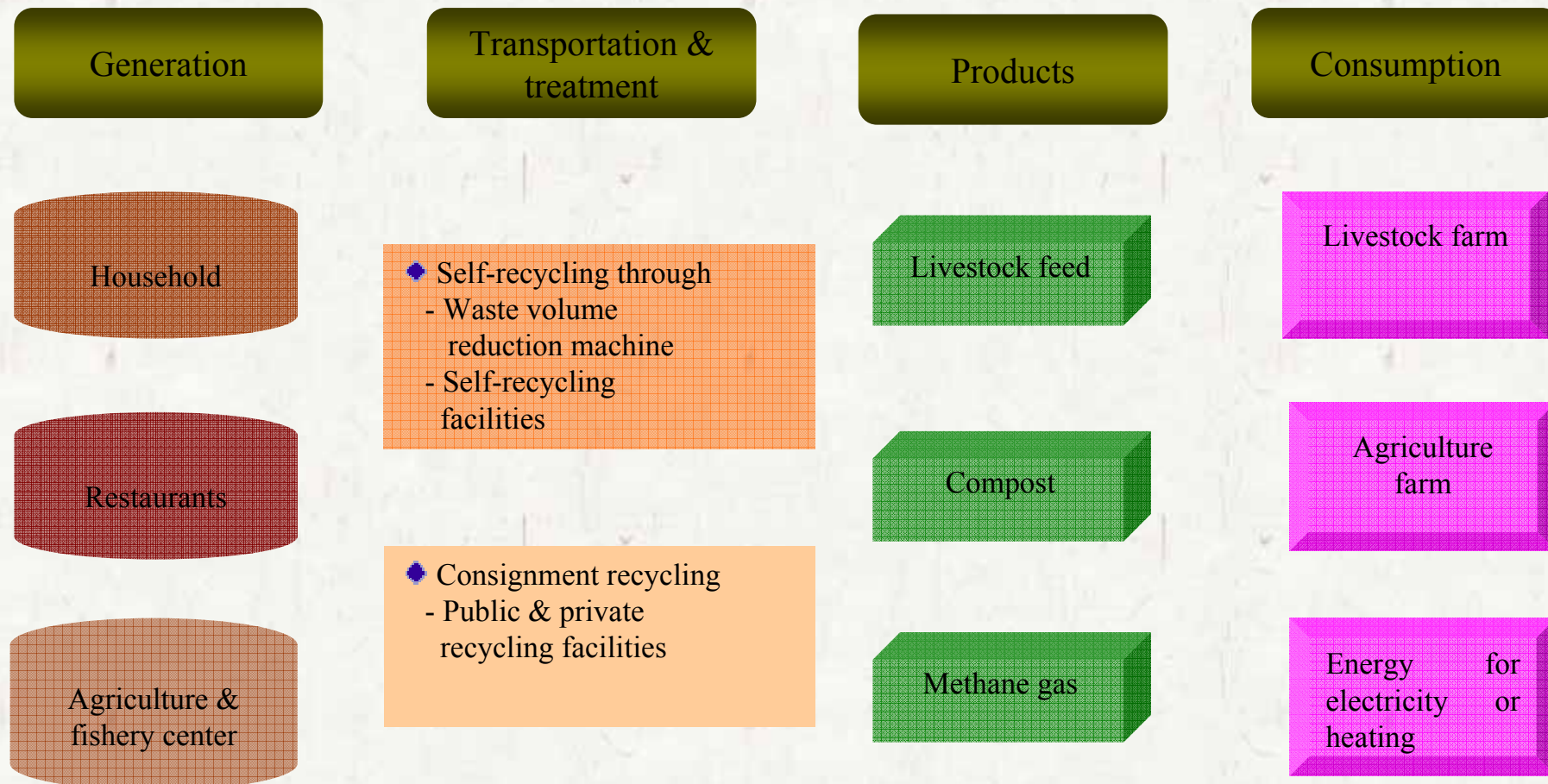


■ Lanfilling ■ Incineration ■ Recycling

# System of FMR



# Foodwaste Disposal Process





# Where are we now?

- **Remarkable increase of recycling rate and effect of import substitution**
  - Foodwaste recycling rate : 2.1% in 1995 → 41.1% in 2000 → 93.8% in 2005
  - Effect of import substitution for livestock feed and compost : about USD 111.8 mil. in 2005
- **Reduction of foodwaste bringing into landfill sites**
  - Extension of life span of land fill site : 7 years→11 years
  - Saving wastewater treatment expense : about USD 61.1 mil.
- **Settling down separated collection system of foodwaste**
  - 81.3% in 2004 → 96.6% in 2005

# Issues & countermeasures

- **Reduce increasing foodwaste** : 11,464 ton/day in 2004 → 13,028 ton/day in 2005
  - Waging the intensified foodwaste-reduction campaigns with NGOs and mass media to improve wasteful food culture
  - Driving the FMR Comprehensive Plan(2006~2010) with 10 central government agencies
- **Improve negative recognition of foodwaste recycling products**
  - Stable operation of foodwaste treatment facilities through regular inspection
  - Holding annual contest for selecting best foodwaste recycling products
- **Diversification of foodwaste treatment methods**
  - Anaerobic treatment of biomass (foodwaste+nightsoil+sewage sludge)

**Thank you very much for your  
attention!**

**Any Qs?**