

*3R initiatives lunch seminar (E-waste)*

**The status of Japan's Electric Appliance Recycling Law  
and warning for  
a new environmental pollution  
by re-use products and component**




*7 March 2006*

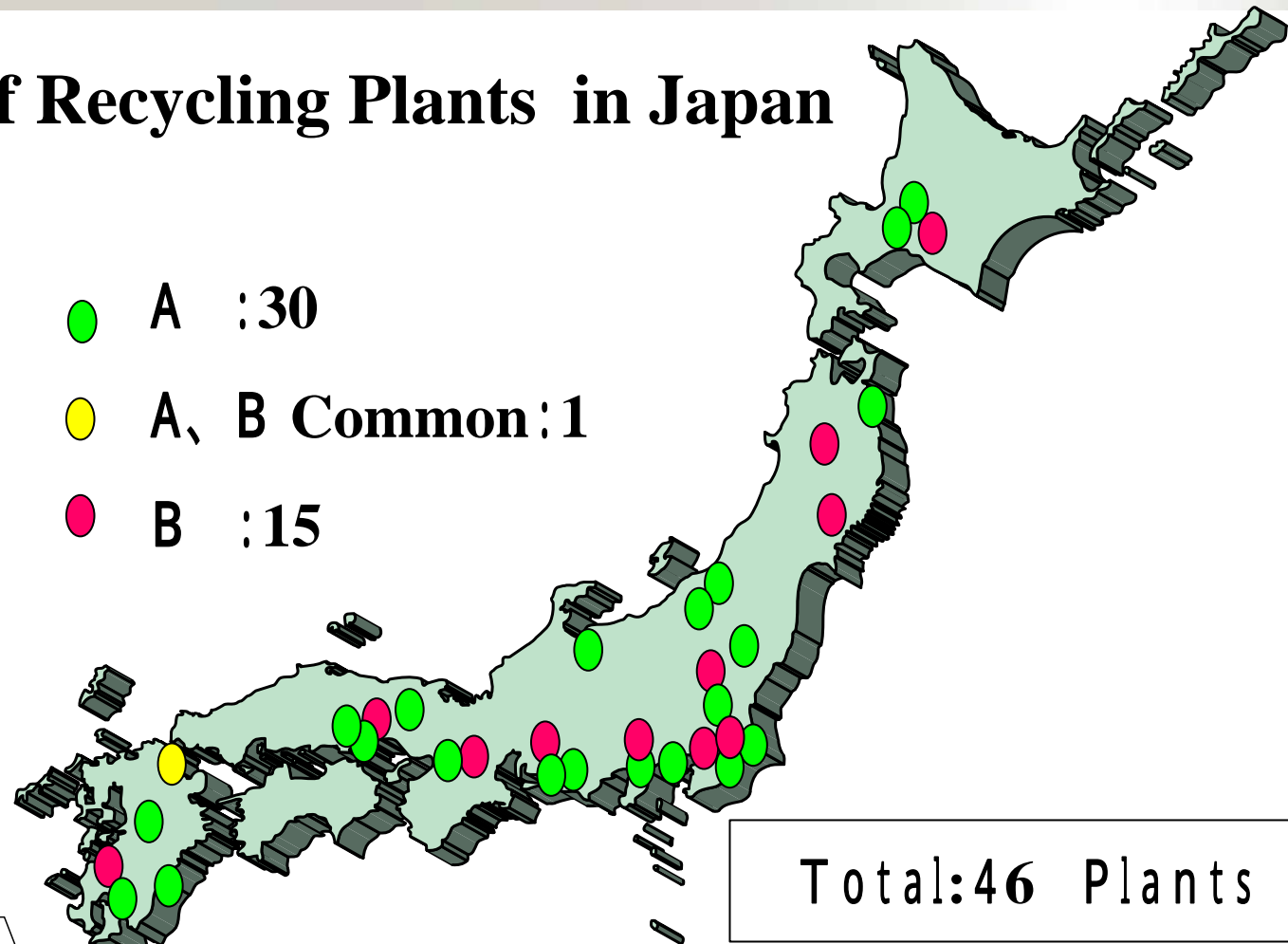
**Kiyoshi Ueno**

**Mitsubishi Electric Corporation**

**For presentation**

## The location of Recycling Plants in Japan

-  A :30
-  A, B Common :1
-  B :15

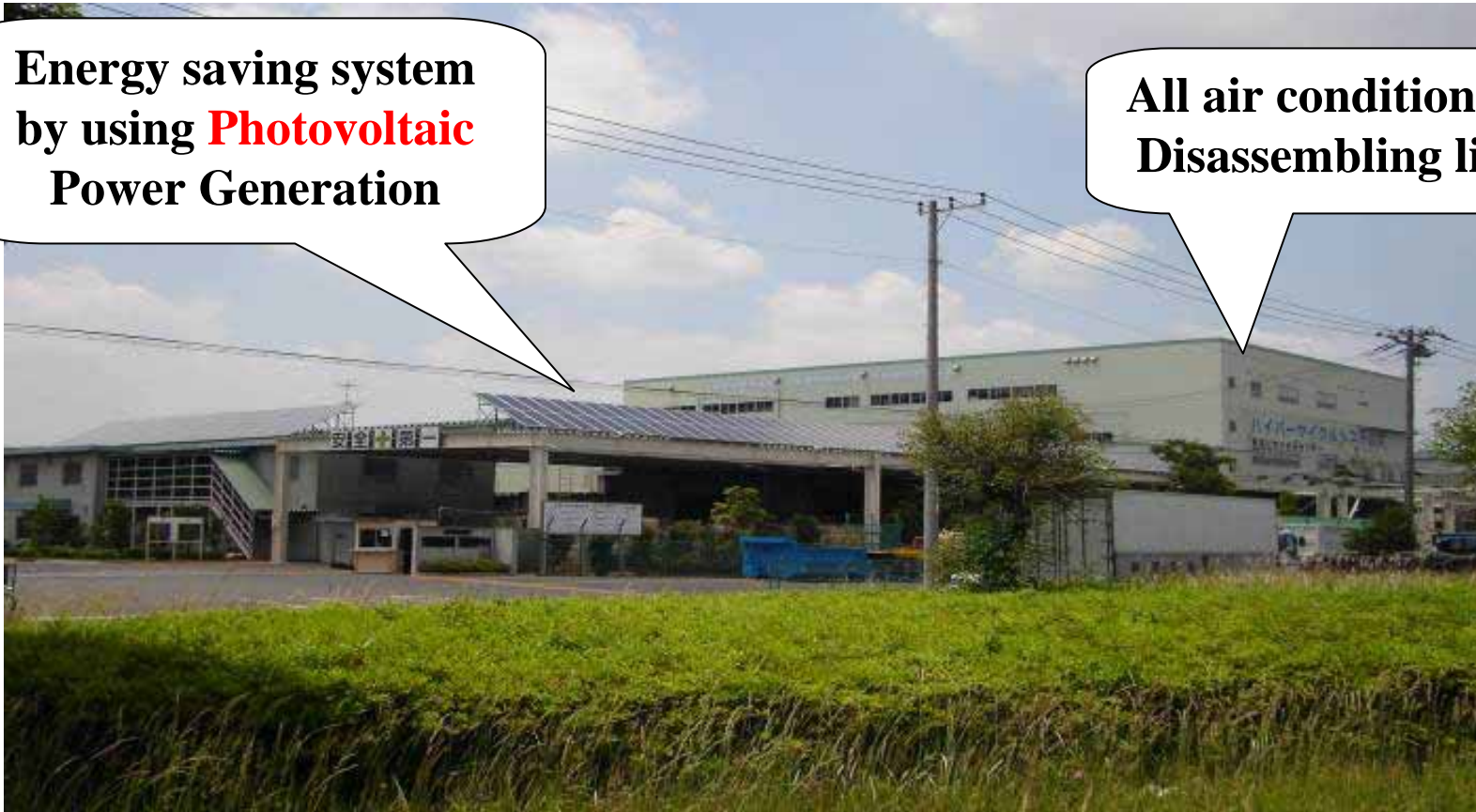


A point in time of April, 2005

# Janna's Typical recycling plant Hyper Cycle Systems Corporation by Mitsubishi Electric

Energy saving system  
by using **Photovoltaic**  
Power Generation

All air conditioning  
Disassembling line



©Mitsubishi Electric Corporation All Rights Reserved

# All air conditioning facility for operators “Air conditioner disassembling line”



**Hyper Cycle Systems Corporation: Japan**



# All air conditioning facility for operators “Refrigerator disassembling line”



**Hyper Cycle Systems Corporation : Japan**

# Refrigerant (Freon) recovery operation from refrigerator



**Hyper Cycle Systems Corporation : Japan**

# Thermal insulator (Freon) recovery facility from refrigerator



**Hyper Cycle Systems Corporation : Japan**

# The result of Home appliances recycling Law in Japan

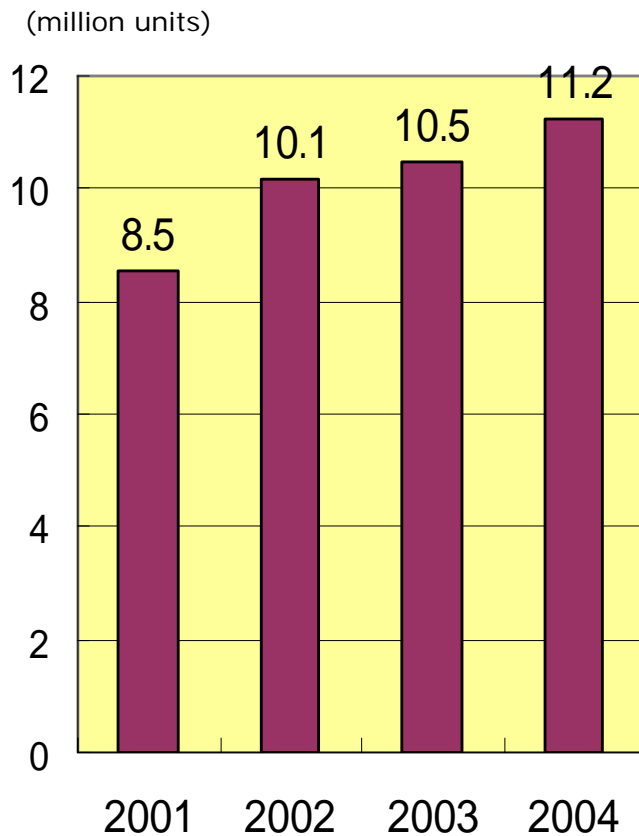
<b>Recycling plants</b>	<b>41 44 plants throughout Japan</b>			
<b>Stocking yards</b>	<b>About 380 throughout Japan</b>			
	<b>Fy2001</b>	<b>Fy2002</b>	<b>Fy2003</b>	<b>Fy2004</b>
<b>Number of appliances Submitted for recycling</b>	<b>8.55</b> Million units	<b>10.15</b> Million units	<b>10.46</b> Million units	<b>11.22</b> Million units
<b>The ratio of illegally dumped appliances</b>	<b>1.58%</b>	<b>1.61%</b>	<b>1.66%</b>	<b>1.54%</b>

The official data from Ministry of Economy, Trade and Industry (METI)

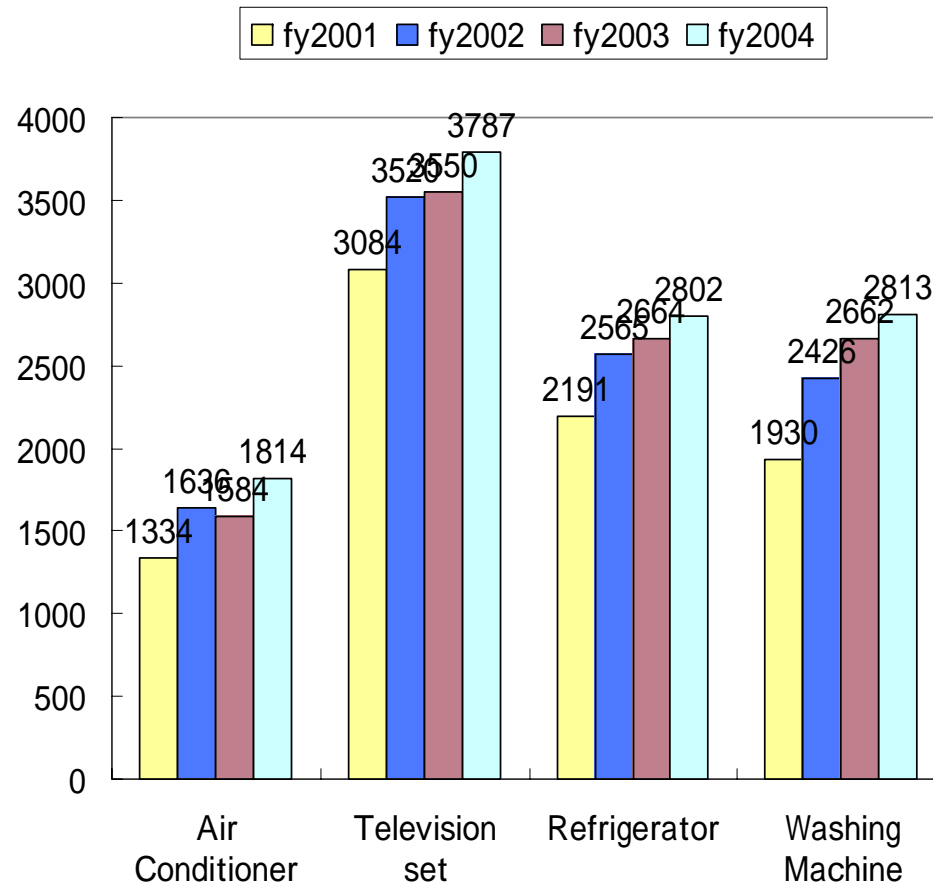


# Current situation of Home Appliance Recycling

**Number of units taken back at designated take-back sites (total)**



**Number of units taken back at designated take-back sites (Per Items)**



Source: Association for Electric Home Appliances 2005

## Recycling standard and results

	<b>Recycling standard by law</b>	<b>Actual data (2004)</b>
<b>Air conditioner</b>	<b>60%.</b>	<b>82%</b>
<b>Television</b>	<b>55%.</b>	<b>81%</b>
<b>Refrigerator</b>	<b>50%.</b>	<b>64%</b>
<b>Washing machine</b>	<b>50%.</b>	<b>68%</b>

**CFC,HCFC&HFC as Refrigerant must be recovered and either destroyed or recycled.**

**Recycling standard = A/B × 100**

**where A = (reused weight by manufacture) + (sold material weight)**

**B = Total received weight**

***Notes!:* The definition of Japan's recycling standard is different from EU-WEEE`recycling ratio**

**Source: AEHA(Association for Electric Home Appliances) 2005**

# Breakthroughs 1

**An Innovation for DFE(DFD) has began**

**More than 10,000,000 units post use appliances are returned to manufacturers (Designers)\* every year.**

***\* Manufacturer`s managed authorized recyclers***

**\* DFE (Design For Environment)**

**\* DFD : Design For Disassembly**

# DFE Seminar program for young engineers



**Experiences  
of  
disassembling**

**Mitsubishi Electric Hyper Cycle Systems Corporation**



# DFE Seminar program for young engineers



**Experiences  
of disassembling  
guided from  
Skilled operator**

**Mitsubishi Electric Hyper Cycle Systems Corporation**

# DFE Seminar program for young engineers



**Evaluation  
of DFD  
and cost  
calculation**

**Mitsubishi Electric Corporation Kamakura institute center**

# Ideas for Easy to break

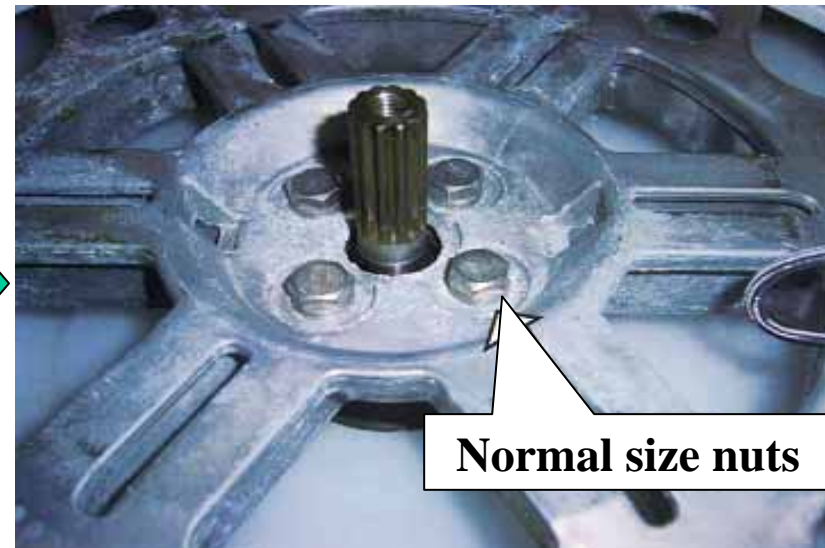
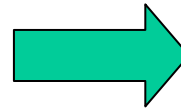
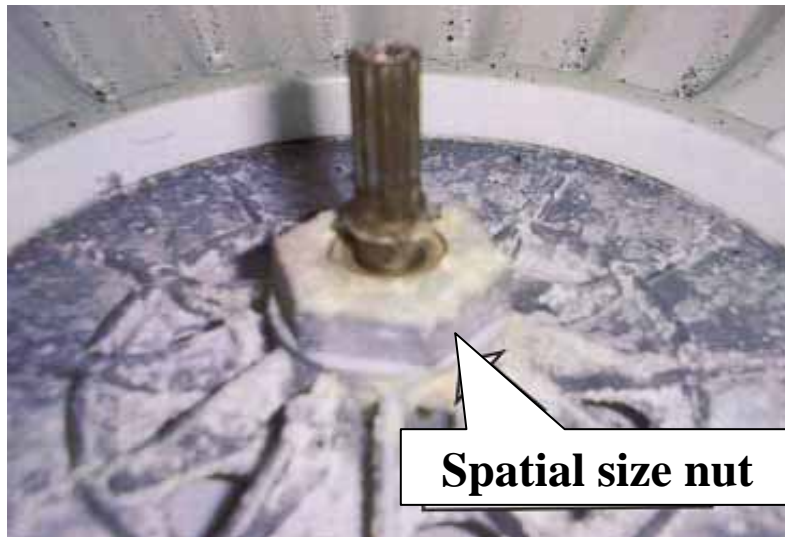


For the porpoise of easier to break ,  
**breakpoint slit** is added to harness holder



# Improvement of Connecting assays

## Case of Pullsator unit of washing machine



In recycling plant,  
**special size tool** is necessarily  
to disassemble

In recycling plant, it is  
easily able to disassemble  
by **normal tool**

Copyright Mitsubishi Electric Corporation



## Breakthroughs 2

### “Horizontal self-recycling in used plastic”

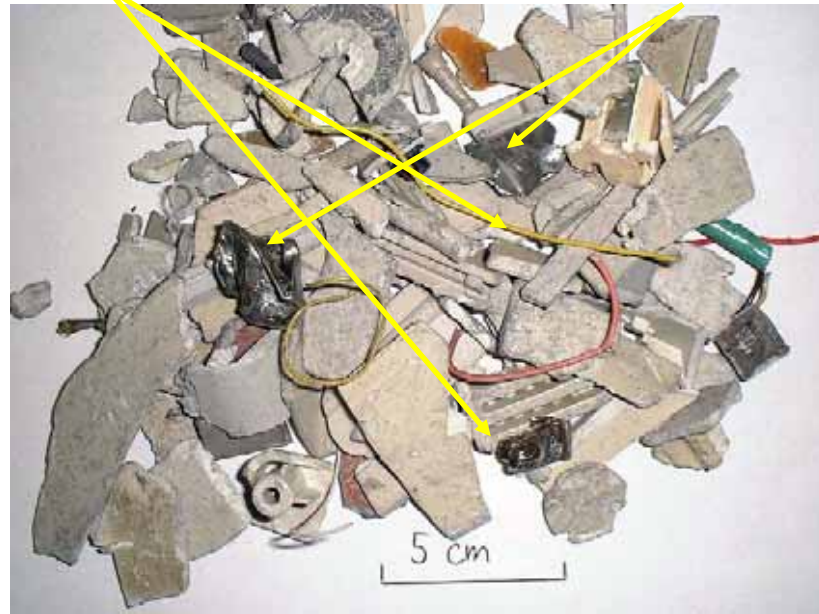
**More than 10,000,000 units post use appliances are returned to manufacturers (Designers) \* every year.**

*\* Manufacturer`s managed authorized recyclers*

# Plastic Material Recycling

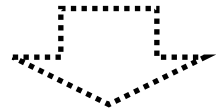
PVC coated copper wire

Metal plate



Metal-plastics mixed shreds  
(Raw material)

Plastics after milling and separation  
(Not containing metal & PVC)



**STOP!**  
**Landfills, Incineration**



**RECYCLABLE**

Reductant for blast furnaces in steel plants & **material recycling**

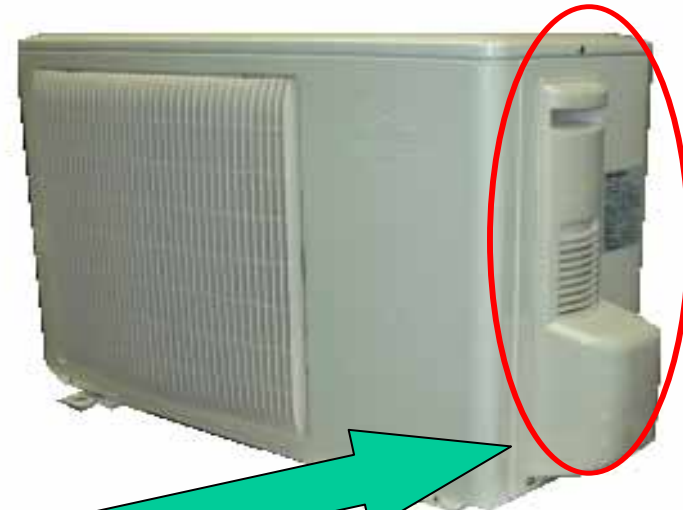
# The 'Horizontal Self-recycling' concept is now into practice



Collected used  
Vegetable case of  
refrigerator



Clean up and refined pellet plastics

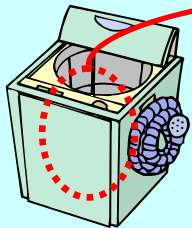


The service panel of  
an air conditioner

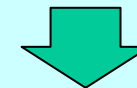
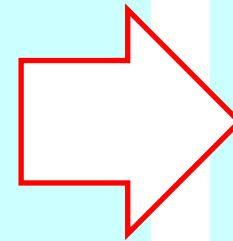
**Example of Horizontal use material recycle:  
From Refrigerator parts to Room air conditioner parts**

# The 'Horizontal Self-recycling' concept is now into practice: Case of Washing machines

Plastic collecting tool from inner body of washing machine



Crush, Cleaning and re-pelleting



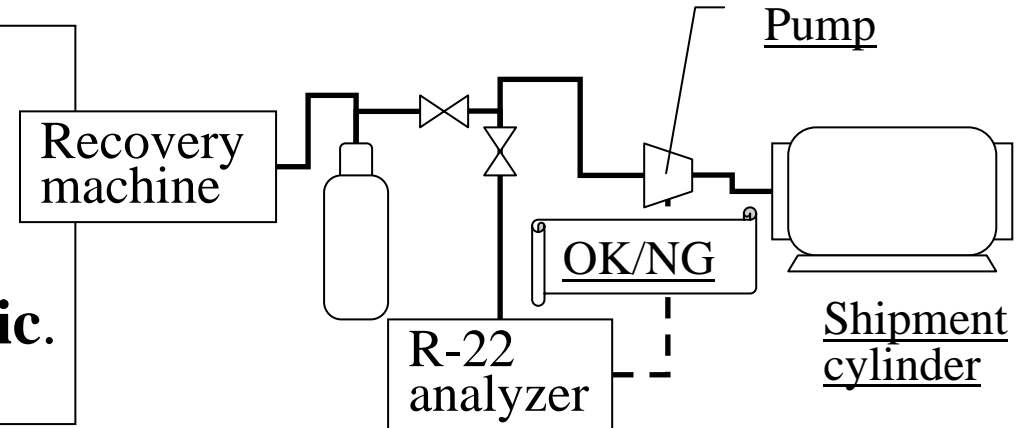
Re-use for base plate of washing machine



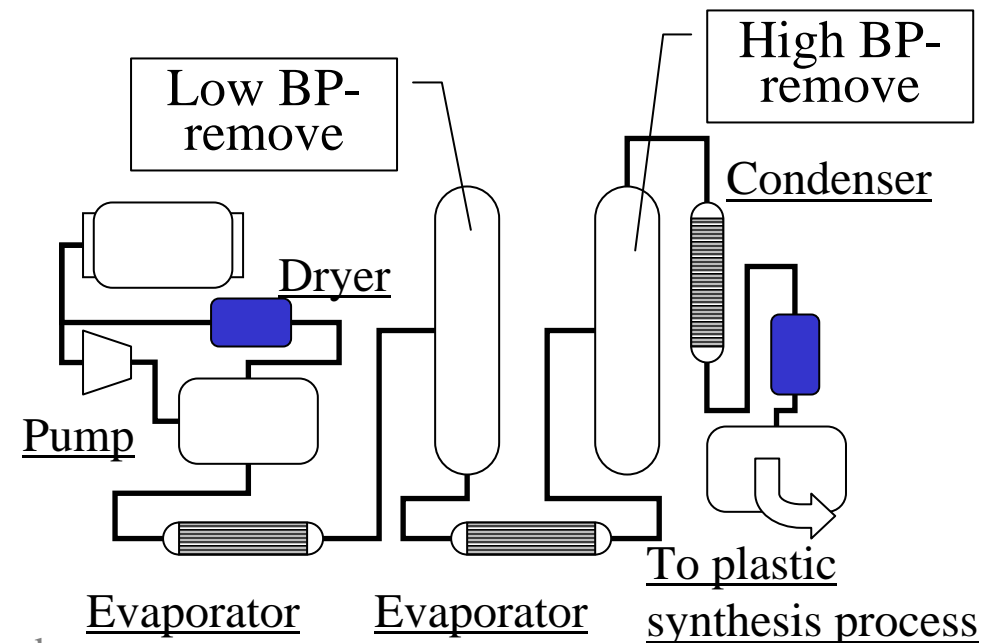


# Chemical Recycling of R-22

- Development of the system to recover uncontaminated R-22.**  
**By Mitsubishi Electric.**



- Development of the technology to concentrate the recovery R-22, and to apply the current plastic synthesis plant.**  
**By Asahi Glass.**



# The example of Fluorinated Plastics applied to Fish grill Plate

Fish grill Plate coated by Fluorinated Plastics



**Fluorinated Plastics  
Made from  
Recovered R22**



**IH cooking heater**

## Estimated flow of post-use electric appliances breakdown (at2003)

	Recycled by Official Recycling plants	<b>Exported</b>	Others (Ex. municipals)	Total wasted
<b>TV</b>	355(39.1%)	<b>550(60.6%)</b>	3(0.3%)	908(100%)
<b>RAC</b>	158(53.9%)	<b>75(25.5%)</b>	60(20.6%)	294(100%)
<b>Ref.</b>	266(77.1%)	<b>50(14.5%)</b>	29(8.4%)	346(100%)
<b>W.M.</b>	266(78.6%)	<b>60(17.1%)</b>	12(3.7%)	339(100%)
<b>Total</b>	1,046(55.5%)	<b>735(39.0%)</b>	105(5.6%)	1,886(100%)

*Notice!:* Just estimated data by hearing

× 10,000units

Source: METI March 2005

## **Warning for re-use market**

- 1. Warning about a spreading of E-Waste in developing countries.**
- 2. Warning about diffusion and expansion of CFC, HCFC, and other environmental relevant materials.**
- 3. Warning about illegal use of an intellectual property right. ( In this W.S N/A)**



# **Warning for a spreading of E-Waste in developing countries.**

**Almost Asian countries has preparing a law  
or some regulations of recycling system and  
recycling facilities.**

**And also has ratified Basel Convention.**

**But .....**

# Re-used product on the market of developing country



**Re-used room air conditioner**

*Not via recycling plants !!*

*:So cold gray markets in Japan*

# Recycling shop in developing country



**Photo:2004**

# Advanced recycling plant in China



**Photo:2004**



**Warning for diffusion and spreading of CFC, HCFC, and other environmental relevant materials.**

**Many used components, parts, materials are usually not adapted new environmental regulations especially material constitution or DFE (Design For Environment).**

# Re-use components on the market of developing country



Re-use compressors

Photo: for the courtesy of Shinko research Mr.Kamiura

*Not via recycling plants !!*

*:So cold gray markets in Japan*

## The recycling facility in developing country



Photo:2002

**(Dismantling compressors)**

## Trade Regulation on Secondhand Electronics

<b>Japan</b>	International trade of secondhand is not under control.
<b>China</b>	In 1998, Import of secondhand home appliance is prohibited. In 2000, import of e-waste is also prohibited. In 2002, import of crushed e-waste is also prohibited.
<b>Hong Kong</b>	International trade of secondhand is not under control. But a notice on distinction of secondhand and waste is issued by Environmental Protection Department, such as testing before shipment and proper packaging.
<b>Philippines</b>	Prior Notice and Consent is requested to import of electric assemblies.
<b>Thailand</b>	Copying machine that is less than 5 years old and other electronic product that is less than 3 years old can be imported

Source Michikazu Kojima: Institute for Developing Economies – JETRO ERI 28  
3R Initiatives International symposium at UNU April 28, 2005



# Allowable re-use and should be regulate re-use

## *Just trial & private only classifications!!*

<b>Classification</b>	<b>Details</b>
<b>Re-use</b> <b>Should be promote</b>	<ul style="list-style-type: none"> <li>• Re-use products managed by manufactures themselves</li> <li>• Re-use components managed by manufactures themselves</li> </ul>
<b>Re-use</b> <b>Something worrying</b>	<ul style="list-style-type: none"> <li>• Re-use by third parties (not authorized by original manufactures)</li> </ul>
<b>Re-use</b> <b>Should be regulated or prohibited</b>	<ul style="list-style-type: none"> <li>• Re-producing or rebuilding using another manufacture's components or parts</li> <li>• Re- producing or rebuilding for the purpose of escaping environmental regulations.</li> </ul>
<b>Environmentally Relevant component</b>	<ul style="list-style-type: none"> <li>• Mandate a destruction of a function</li> <li>• Not for re-use but for <b>only material recycling</b></li> </ul>

## **In-house Standard in case of exporting from Mitsubishi Electric recycling plant**

### **1. From HCS**

**The shipment (export) route to the treatment plants must be followed in the contract terms.**

**2. Import quota must be own slot.**

**3. The treatment plant must have corporate permission and the operational permit.**

**4. The export articles are contained in the permission items.**

**5. The treatment plants must have the policy of environmental measures turned to the future, and be improving environmental measures etc.**

**6. Must recycle them as a maximum as resources (partly can be landfilled etc.).**

**7. Must not reuse as the functional components.**

**8. In the incineration processing, must not cause environmental pollution.**

**9. In processing of landfill, must not cause environmental pollution.**

**10. The secondarily treatment facilities must have the policy same as or more than the primary treatment plants.**

**11. HCS to make audits the plants regularly.**

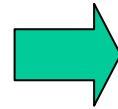
**\* HCS:Hyper Cycle Systems Corporation**

## **In-house standard of functional destruction for used components**

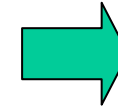
<b>Components</b>	<b>Mandated operation guide</b>
<b>Compressor</b>	<ul style="list-style-type: none"><li>• <b>Discharge &amp; collect Freon gas &amp; oil</b></li><li>• <b>Drill to body or destroy electric terminals</b></li></ul>
<b>Mortar</b>	<ul style="list-style-type: none"><li>• <b>Cut off coils or lead weirs</b></li></ul>
<b>Capacitor</b>	<ul style="list-style-type: none"><li>• <b>Discharge &amp; collect oil (Oil capacitor)</b></li></ul>
<b>Deflection York</b>	<ul style="list-style-type: none"><li>• <b>Destroy core section or cutting off coils</b></li></ul>
<b>Speaker</b>	<ul style="list-style-type: none"><li>• <b>Destroy crone paper</b></li></ul>
<b>Transformer</b>	<ul style="list-style-type: none"><li>• <b>Cut off coils or lead weirs</b></li></ul>

# Not for E-Waste

## The case of printed circuit boards



**Sorting**



**Crushing**

**Dismantling operation of printed circuit boards from TV sets at Mitsubishi Electric Hyper Cycle Systems Corporation  
Kyoto pref. Japan**

**Non ferrous smelting plants  
Mitsubishi Material Naoshima Plant  
Kagawa pref. Japan**





## Exporting materials from recycling plant

### The case of Mitsubishi Electric Recycling plant

Materials	Exporting	Status
Metals	As materials	Via trading company (With auditing)
Plastics	As materials	Via trading company (With auditing)
CRT	As caret glasses	According to AEHA quality regulation
Printed circuit boards	Nothing	Treating in domestic smelters
Used components	Not existing	Strictly Prohibited to export from recycling plant by in-house regulation
Used components (Functional destroyed)	As materials	All components is not for reuse but for material recycling

- All these materials are not exporting directory but via trading company
- In-house Exporting regulation is strictly performed and audited by audit division
- AEHA: Associations for Electric Home appliances

# **Destruction of a function is carried out for the purpose of environmental protection**



**Collected used compressors**

**Source :Mitsubishi Electric Hyper Cycle Systems Corporation**

## **Some proposals to prevent E-waste and promote a reasonable re-use**

**Mandate a functional destruction to an environmentally relevant components when exporting to developing countries .**

**Mandate a PL law to producers treating 're-use products' or 're-build products'**

**For promoting reasonable re-use, the regulation and management control is necessary not only importing sides but also exporting sides.**

***Just trial & private only proposals!!***

## Conclusions

- **Japan's Home Electric Appliance Recycling Law has brought about unexpected breakthroughs in Japanese electric and electronics Industries.**
- **One is a qualitative shifts in DFE which depends on the information from recycling plant.**
- **Another is a field of used plastics, the Horizontal self-recycling concept is now into practice.**
- **On the other hands ,a new worrying problem of an environmental pollution has become clear in case of re-use markets treating with secondhand products and components .( ex. compressors)**
- **For promoting an appropriate re-use, some trial proposals are introduced .**

*Thank you very much for your kind attention!*