

Support for climate-risk informed decision making and practical adaptation action



AP-PLAT

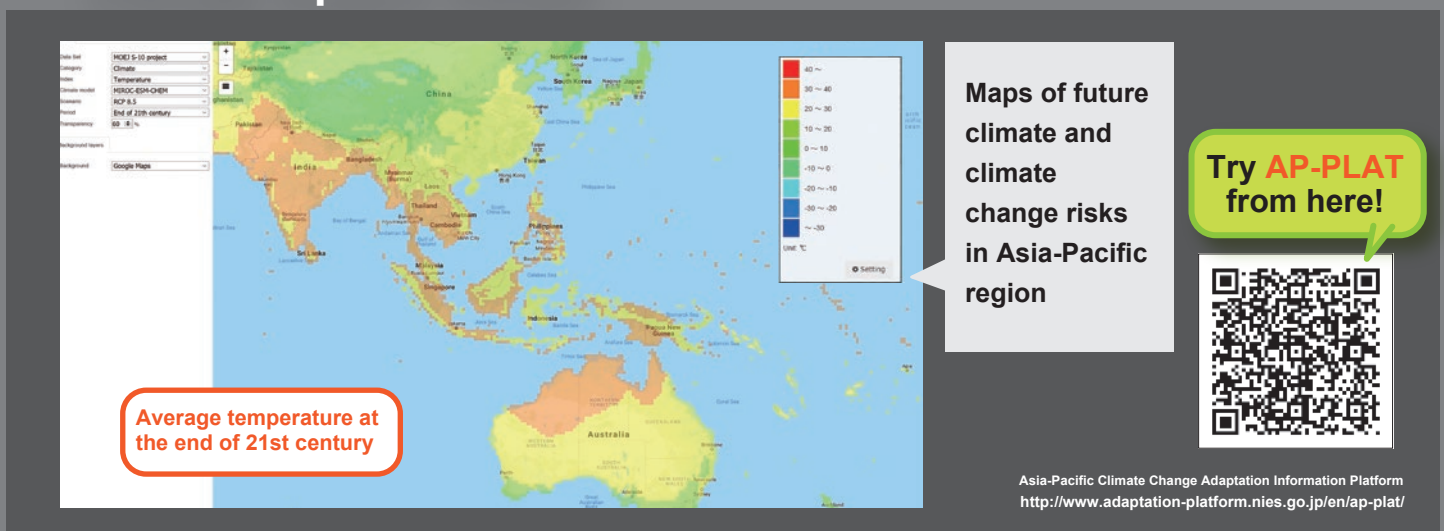
Asia-Pacific Climate Change Adaptation Information Platform

Managing the wide ranging impacts of climate change is now a common challenge over any sectors to all countries and regions including the Asia-Pacific region. To support effective and efficient climate change risk management to realize resilient society and environment, the AP-PLAT aims to serve as an online go-to place for climate change risk and adaptation practices based on scientific evidence.

AP-PLAT also explores practical partnership to be a platform to share, to learn among the partner countries and organizations in order to create scientific knowledge and useful tools. Through the collaborative activities with the partners, the platform heads to enable environment for climate change risk informed decision making and practical adaptation action.

AP-PLAT Website Contents

Climate Impact Viewer



Average temperature at the end of 21st century

Maps of future climate and climate change risks in Asia-Pacific region

Try AP-PLAT from here!

Asia-Pacific Climate Change Adaptation Information Platform
<http://www.adaptation-platform.nies.go.jp/en/ap-plat/>

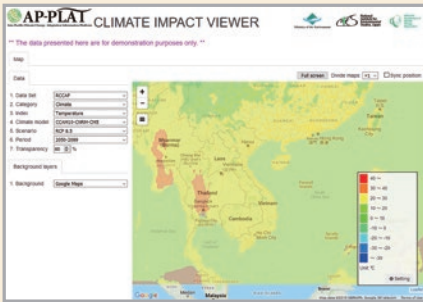
Other Menus

- Climate Change & Adaptation
- Plans & Implementations
- Tools & Guidelines
- Financial Information
- Adaptation Business
- News

AP-PLAT provides scientific information of climate change risk



Scientific information from NIES and the partners

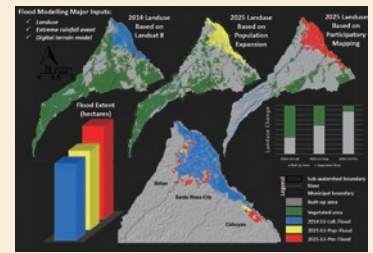


Integrated data from Regional Climate Consortium for Asia and Pacific

National adaptation platforms



Good practices from the Bilateral Cooperation

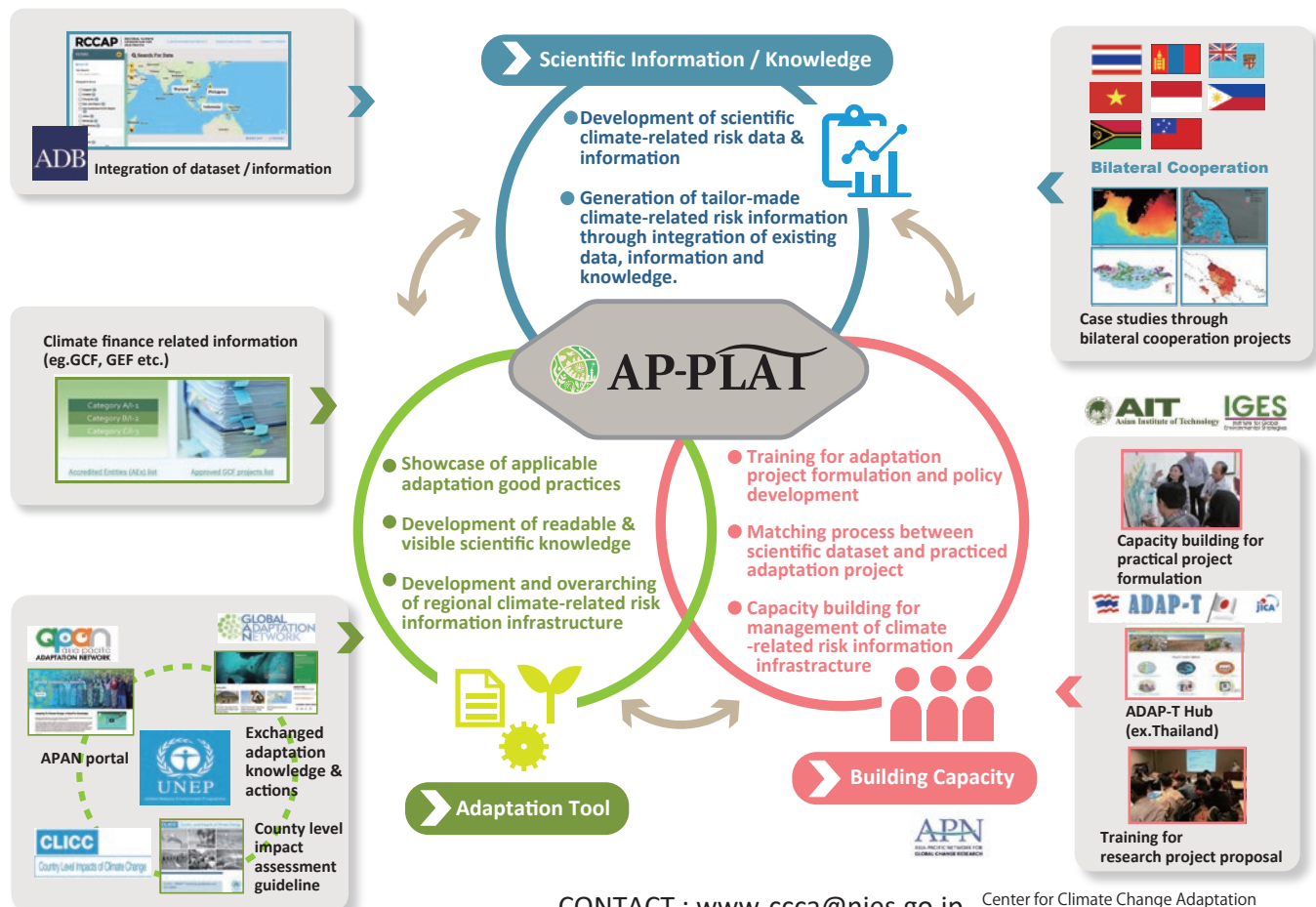


Flood Extent of Different Land-use Scenarios under Event-based Precipitation in Silang-Sta. Rosa Subwatershed, Philippines

Promoting information sharing among stakeholders to accelerate the adaptation measures to climate change risks

Core Pillars of actions in cooperation with the partners under the AP-PLAT

1. Develop scientific knowledge/information on projection of climate change impacts in the region
2. Showcase supportive toolkits for officials and stakeholders engaged in adaptation planning
3. Build capacity on climate change impact assessment, adaptation



CONTACT : www-cca@nies.go.jp

Center for Climate Change Adaptation
National Institute for Environmental Studies