

# Aso-Kuju National Park

The scent of Grasslands, the breath of volcanoes.  
The blessing of the wind and water,  
connected by people, a land of wonder.

The main characteristics of the park include a huge caldera encompassing the five peaks of Mount Aso, along with the Kuju Mountain Range located to the north, and magnificent and gentle grasslands surrounding them. In the southern part of the park, visitors can admire a series of breathtaking scenery, including the fuming crater of Mount Nakadake, the beautiful cone of Komezuka, the vast grassland of Kusasenri Ga Hama, as well as the caldera in which they are situated. Around the Kuju Mountain Range, visitors will find various volcanic phenomena scattered throughout the area, creat-

ing unique volcanic landscapes. There are numerous highlights, including the vast grasslands of the Kuju and Handa plateaus, as well as the academically valuable wetlands of Tadewara Marsh and Bogatsuru Marsh. In the northern part of the park, the beautiful shapes of Mount Tsurumi and Mount Yufudake, the sources of hot springs in Beppu and Yufuin, can be appreciated. From the mountain ridges, visitors can enjoy a panoramic view stretching from Beppu Bay to the Yufuin Basin and the Kuju Mountain Range.

Date of Designation :  
December 4, 1934

Area : 73,017 ha

Related Prefecture :  
Kumamoto, Oita



Enjoy the ocean, rivers, and other water scenery



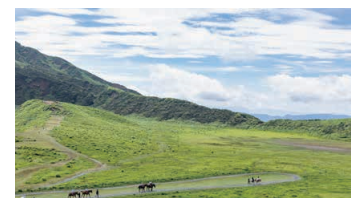
Kikuchi Gorge



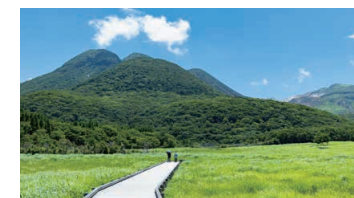
Shirakawa Riverhead



Enjoy the mountains and flora



Kusasenrihama Glassland



Tadewara Moor



Experience culture and local life



Akaushi (Japanese Brown Cattle)



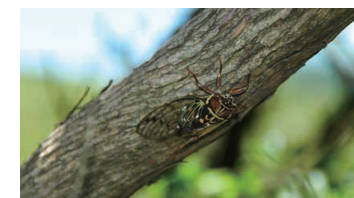
Controlled Burns (in spring)



Meet the wildlife



Shijimiaeoides divinus



Kyushu-Yezo Cicada  
(the family Lyristes japonicus)

# Itinerary

One of the world largest caldera and millennium-old grassland. Witness the life of the locals with volcanoes and grasslands

One of the largest caldera in the world is located in the Aso-Kuju National Park. Mt. Aso soars in the center of the caldera, the volcanic mountains such as the Kuju Mountain Range stretch across the Kita-Gairin caldera, and a vast millennium-old grassland, which has also been part of the livelihood of the locals, encircles the mountains. With a certified Bokuya guide, experience the allure of the grasslands of Aso in an area that is not usually open to the general public. Since the grassland conservation fee is included in the fee, learn about the life and history of the locals while contributing to conservation of the grasslands. A helicopter tour offers the opportunity to view the crater of Mt. Aso from the sky. In a Japanese taiko drumming performance, enjoy the contrast between the volcanoes and the grasslands.

web site





## Day 1

Learn about the allure of Aso at the Visitor Center at Kusasenri and watch a Japanese taiko drumming performance

- 10:15 ● Kumamoto Airport
- }
  -  Private tour car
- 11:15 ● Mt. Aso Visitor Center
- }
  - 12:00
- 12:00 ● Lunch
- }
  - 13:00
- 14:00 ● Live performance at open-air "Skyward Stage"
- }
  - Live Japanese taiko drumming performance with Aso-Kuju National Park in the background
- 15:00
- }
  - March to December Every Monday to Friday  
14:00 Start (July, August: 16:30 Start)  
October, November: Thursday to Monday  
14:00 Start
- }
  -  Private tour car
- 16:00 ● Hotel (Aso Uchinomaki Onsen)

## Day 2

Feel the grasslands actively maintained by the locals through pasturing and controlled springtime burnings, called noyaki

- 8:45 ●  Private tour car
- }
  - 9:45
- 10:00 ● Aso trail walk/e-bike ride
- }
  - Activity tour by a certified guide to the grassland area that is not usually open to the public
- 15:00
- }
  -  Private tour car
- 16:00 ● Hotel (Aso Uchinomaki Onsen)

## Day 3

Learn about the initiatives to protect the grassland and enjoy the contrast between Mt. Aso and grasslands from the sky

- 8:45 ●  On foot
- }
  - 9:00 ● Aso Grassland Conservation Center
  - }
    - 9:30
  -  Private tour car
- 10:00 ● Mt. Aso helicopter tour
- }
  - Enjoy the view of one of the world's largest caldera from the sky (Flight time varies from 3 to 15 minutes depending on the tour route)
- 11:00
- }
  -  Private tour car
- 12:00 ● Aso Kumamoto Airport

### Inquiry

Kyushu Regional Environment Office

TEL 096-322-2412

MAIL REO-KYUSHU@env.go.jp