



Really?!



Could your actions be harming nature?

Actually, your everyday things are connected to
the alien species problem

There's something we want you to know.



**Action Plan for Prevention of Damage
from Alien Species (2nd Edition)**



環境省
Ministry of the Environment



Alien species
don't cause any
problems, right?

In fact, some alien species
have been found to cause
different kinds of harm



Oh

Really?!



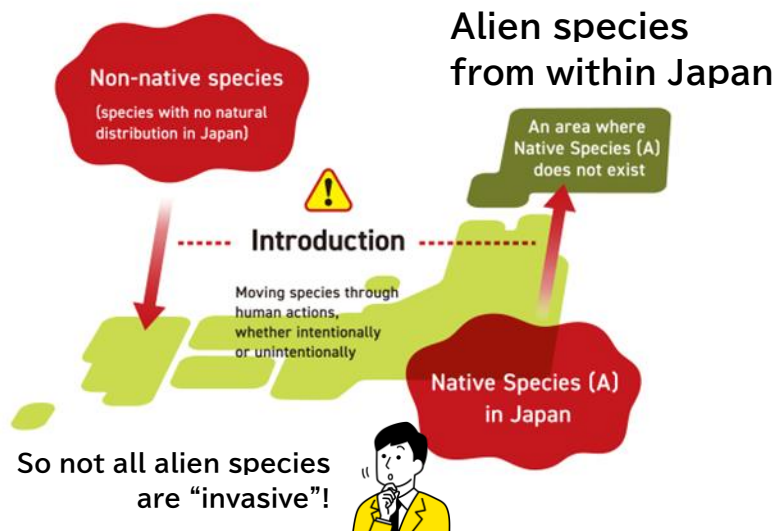
What are Alien Species?

Alien species are living or growing outside their natural range, introduced by humans intentionally or unintentionally. It includes not only species coming in from abroad, but also those brought from one part of Japan to another outside their native range (for example, a species native only to Honshu introduced into Hokkaido) – these are all called alien species. Among them, those that cause or are likely to cause harm to Japan's ecosystems, human life or health, or agriculture, forestry and fisheries are called invasive alien species (IAS).



Not all alien species are harmful—some aren't invasive at all, and some, like certain vegetables, are important to us!

Alien species from overseas
(the "Alien Species" as defined under
the Invasive Alien Species Act)



Why is it a problem?

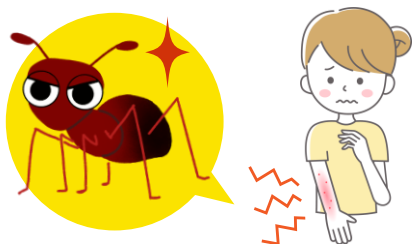
Harm to Ecosystems

When invasive alien species are introduced, they can steal the homes of the native creatures that originally lived there or prey on them, throwing the ecosystem off balance. In the worst case, the native species that used to live there might even go extinct.



Harm to People

IAS can sometimes bite or sting people or pets. Some species, like fire ants, are venomous and have caused reports of serious symptoms. It's also noted that some species such as raccoons may spread infectious diseases that cause severe illness in humans.



Harm to Agriculture, Forestry and Fisheries

Some IAS can wreak havoc on fields or prey on fishery resources. As a result, things like vegetable prices rising or local specialty products being wiped out can happen, which may even affect people's daily lives.



Action Plan for Prevention of Damage
from Alien Species (2nd Edition)



I feel like it doesn't really concern me...

Maybe you just haven't noticed!



Oh

Really?!



Ways alien species get introduced

case 1

Spread through movement of people and goods

Sometimes IAS like fire ants hitch a ride on imported containers or cargo and enter from overseas. Also, when people travel domestically – for example, go hiking or climbing – they might unknowingly spread the seeds of alien species to new areas.



case 2

Spread through pets being released or escaping

In some cases, alien species kept as household pets or used for industrial purposes are released or escape, subsequently establishing populations in the wild. Also, alien species used in home gardens or flower beds can spread to other places.



Maybe our actions have been
making the IAS problem worse?!

What we can do

1. Be aware that everyone can play a role in the IAS problem
2. Learn about what kinds of problems are occurring
3. Let's recognize that we are participants in the IAS problem and take action



Specifically...

- ✓ Never release any alien species you're keeping as pets or ornamental plants!
- ✓ If you travel or enter a rich natural area, clean off any mud from your clothes and shoe soles beforehand!
- ✓ If you find a designated invasive alien species that hasn't been recorded in your area before, report it to the authorities!
- ✓ Look up information about IAS, watch news about them, and deepen your understanding!



**Action Plan for Prevention of Damage
from Alien Species (2nd Edition)**



But... there is nothing we can do...right?

That's not true!

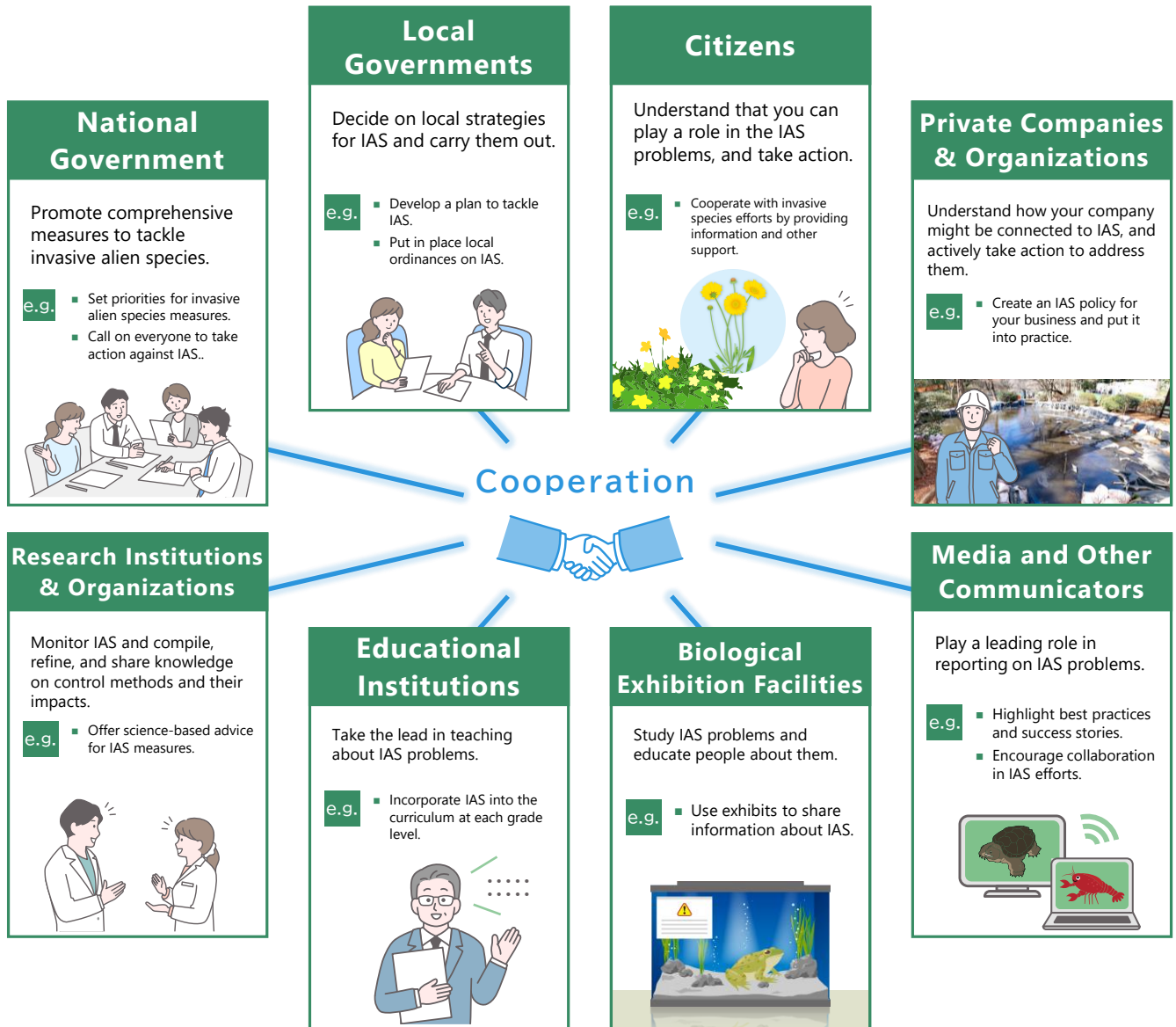


Oh

Really?!



IAS countermeasures by role



For more details, please see the “**Action Plan for Prevention of Damage from Alien Species**”



Action Plan for Prevention of Damage from Alien Species

<https://www.env.go.jp/nature/intro/2outline/actionplan.html>

Contact Information



Ministry of the Environment, Nature Conservation Bureau,
Wildlife Division, Office for Alien Species Management
Kasumigaseki 1-2-2, Chiyoda-ku, Tokyo 100-8975
TEL: 03-5521-8344 FAX: 03-3581-7090
<https://www.env.go.jp/nature/intro/>

Cooperation in creating outreach materials



Environmental Entertainer
WoW Kitsunezaru
<https://www.wows.tokyo/>



Action Plan for Prevention of Damage from Alien Species (2nd Edition)