


環境省サンゴ礁生態系保全行動計画2016-2020
与論におけるモデル事業(2019年)
フォローアップ会議

モデル事業の進捗状況

令和元年11月29日


与論町役場 環境課 主事 光 俊樹

1. 与論島の概況



○与論島の概況

- 面積：20.49km²
- 最高標高：97.08m
- 周囲：23.65km
- 人口：5,056人 (2018年10月)
- 主な産業：農業・観光

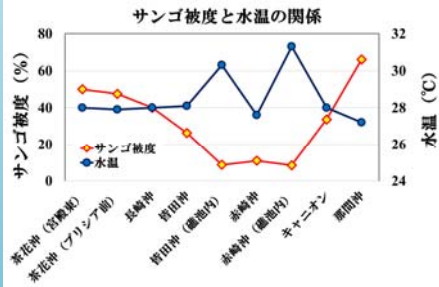


与論島周辺海域のサンゴ再生状況




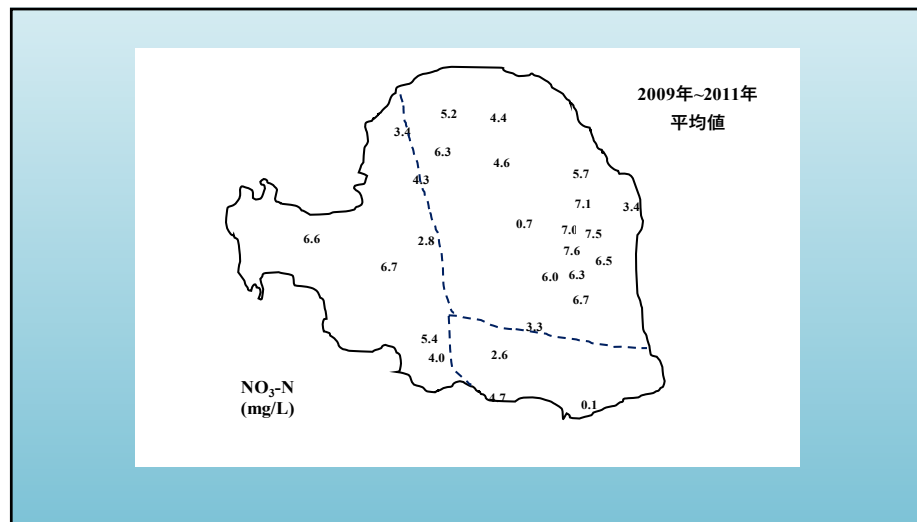
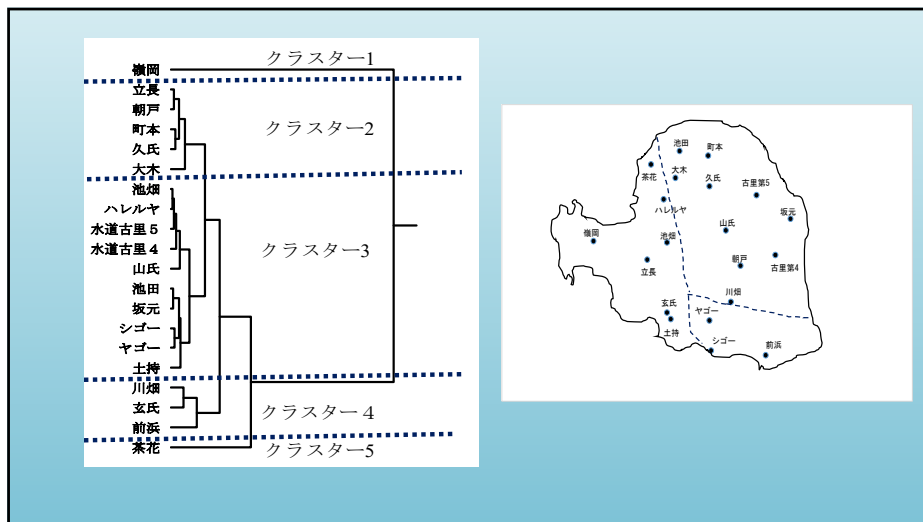
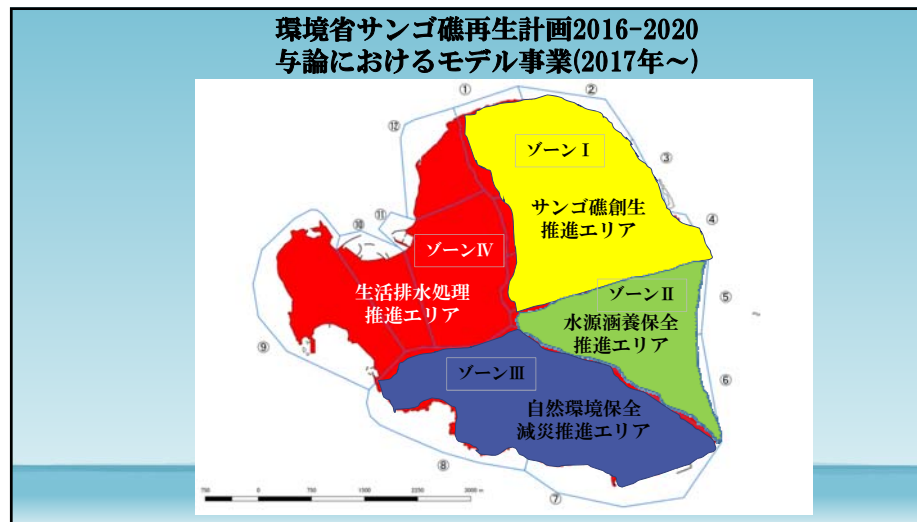
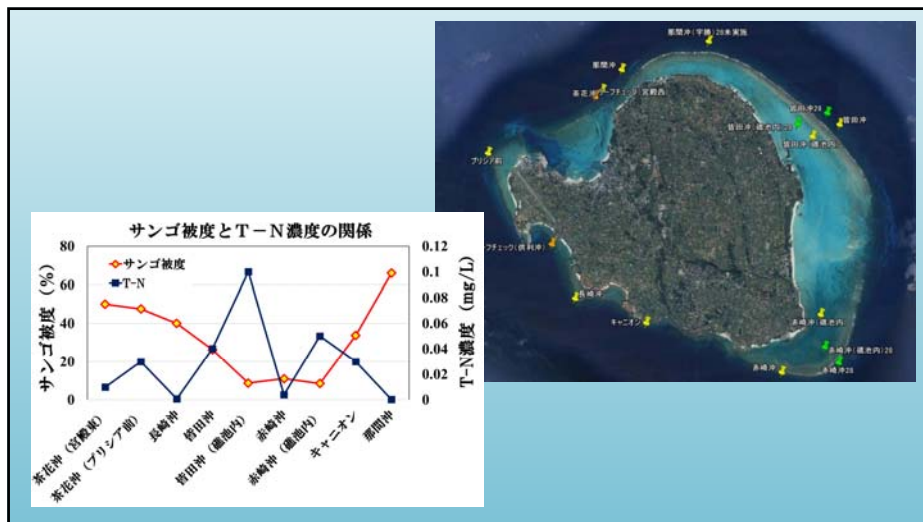
与論島周辺のサンゴ再生状況を示す地図。島周辺の各ポイント（茶花沖、長崎沖、等々）に再生状況の観察ポイントが示されています。写真の挿入は、サンゴの生育状況を示しています。

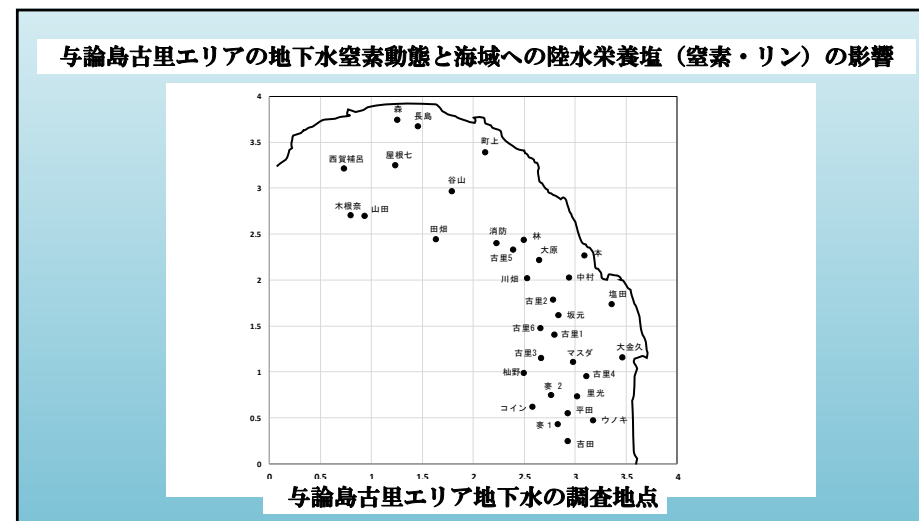
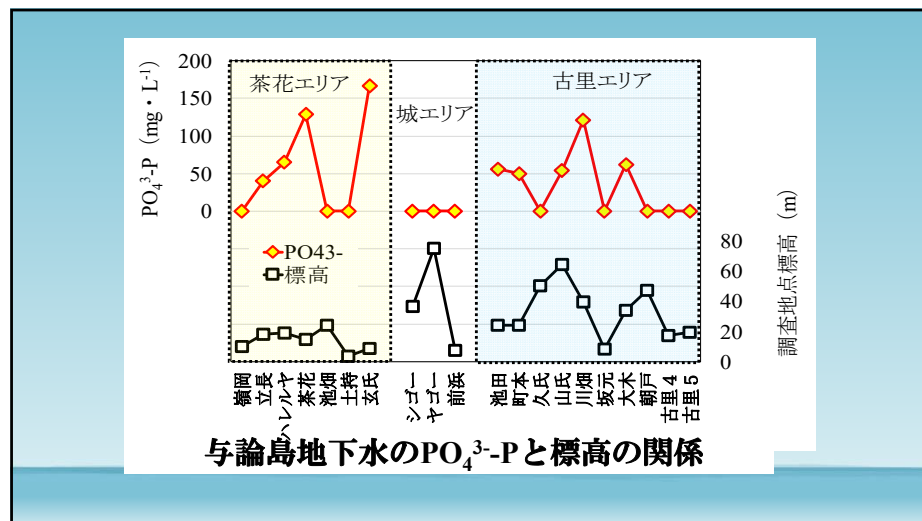
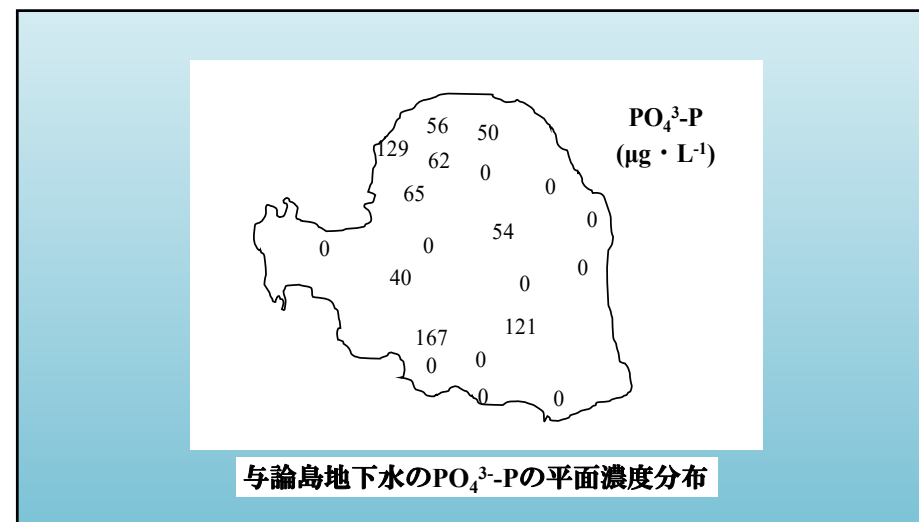
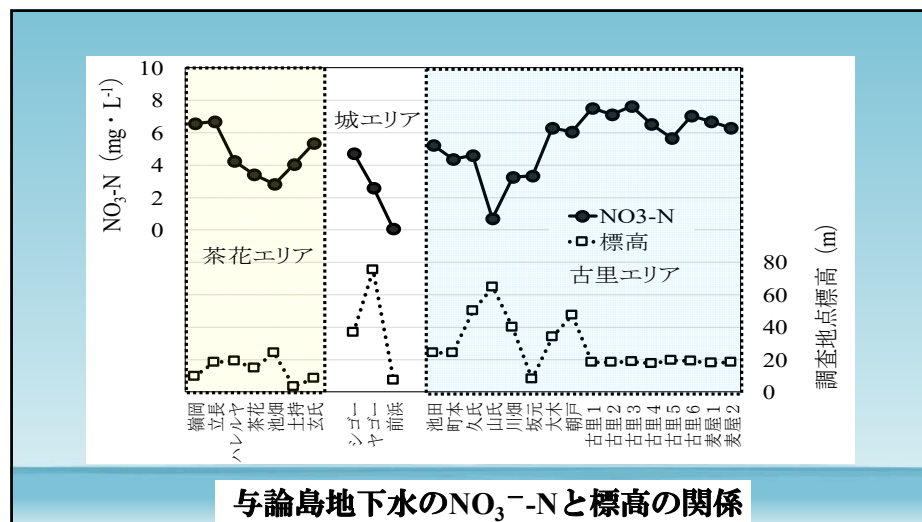
サンゴ被度と水温の関係

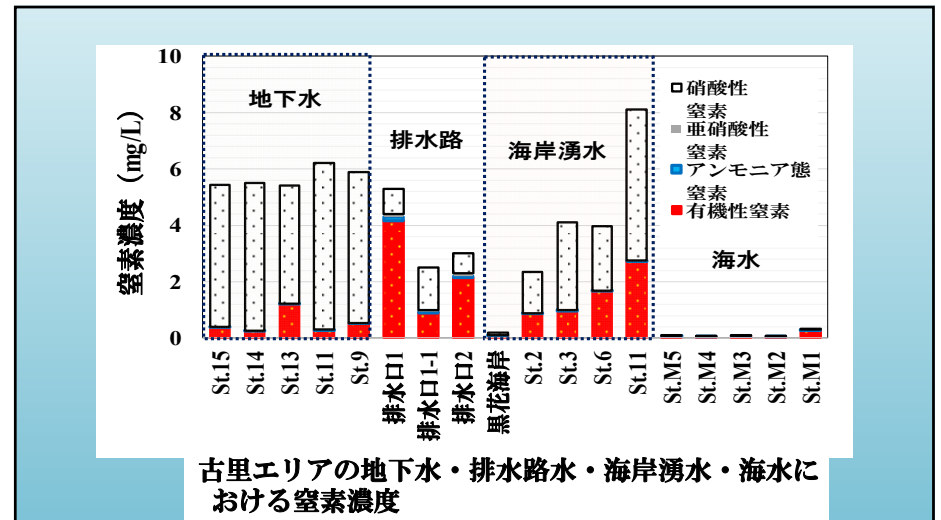
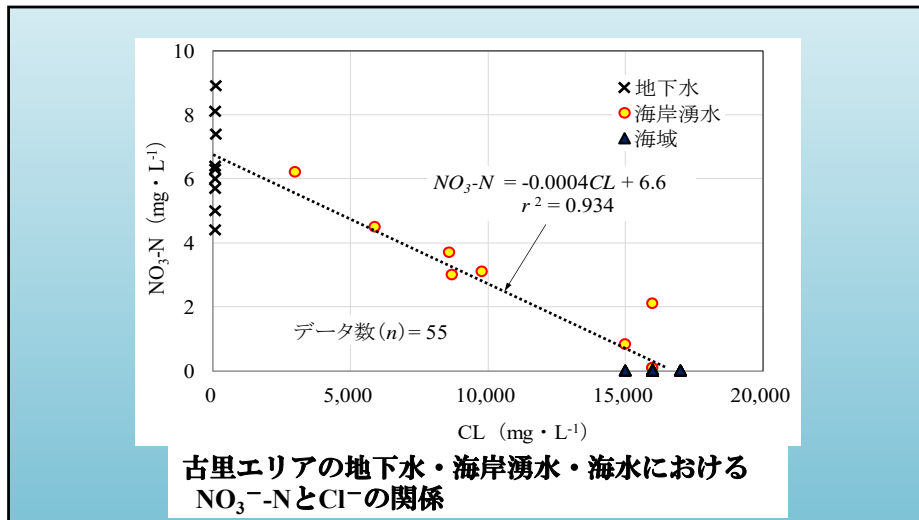
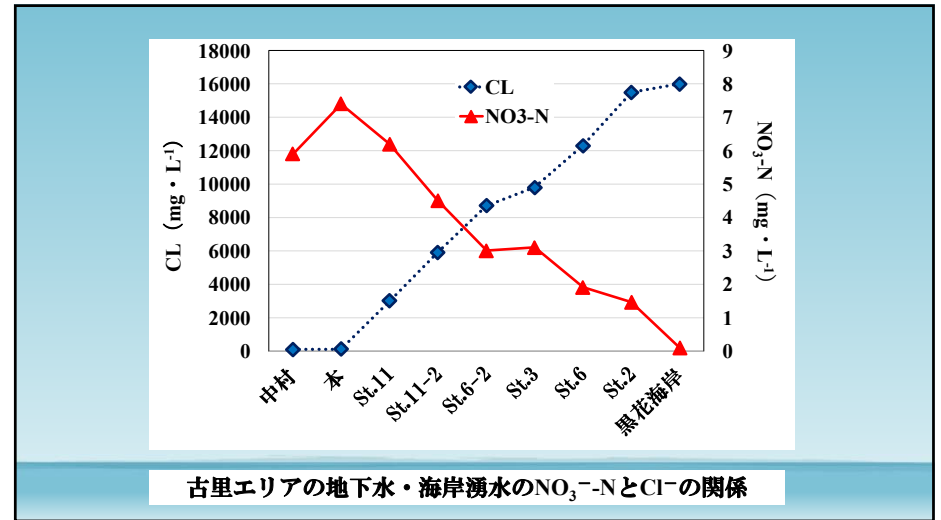
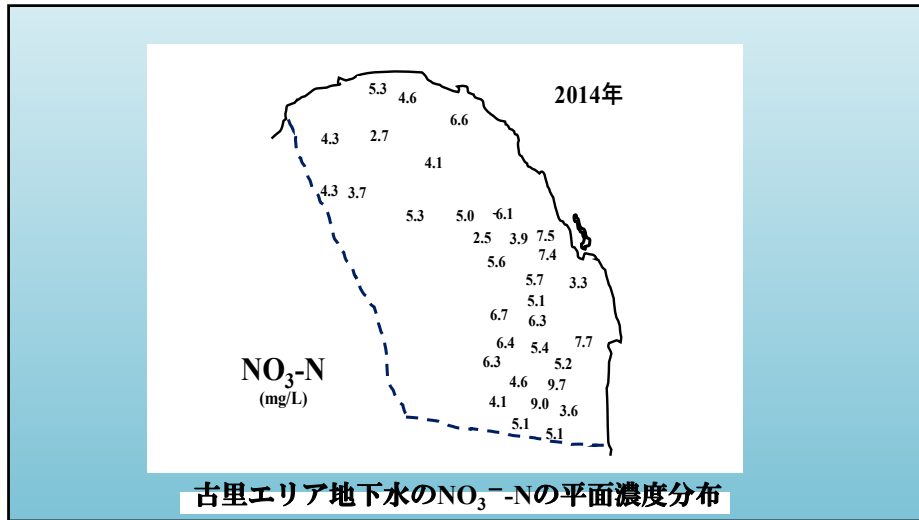


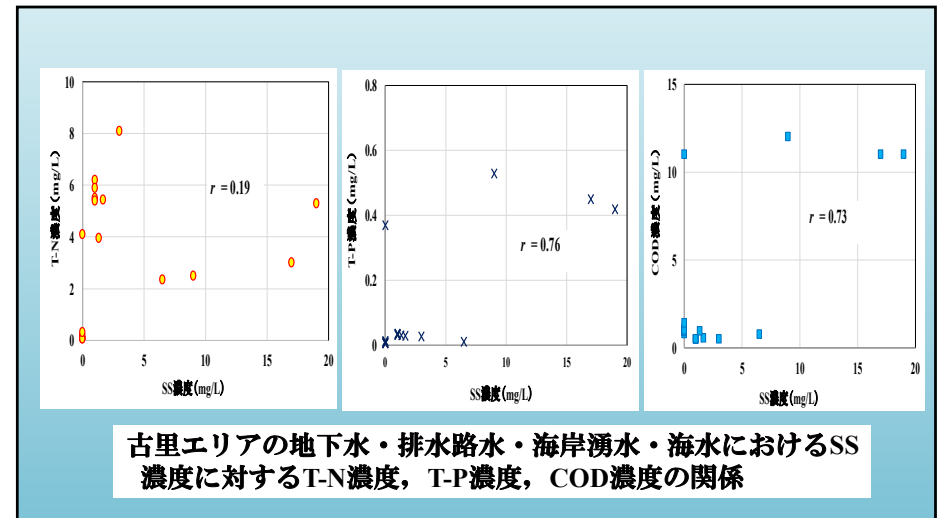
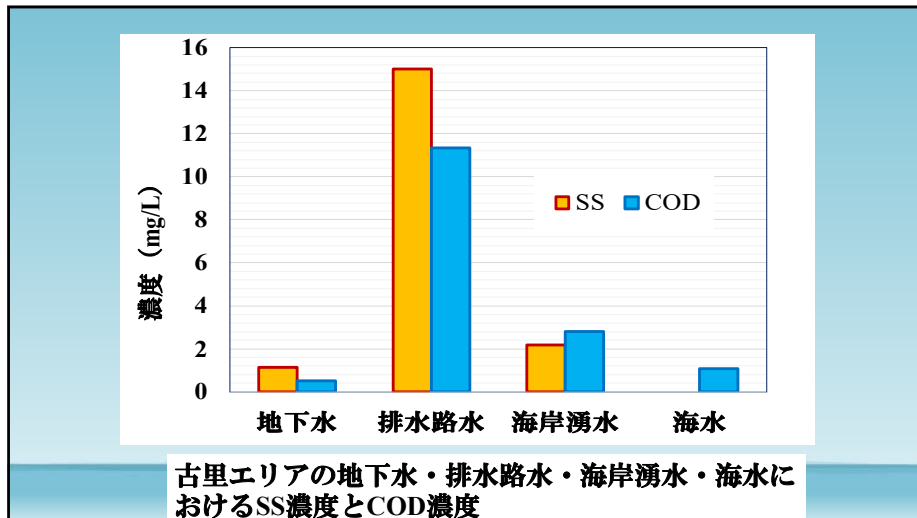
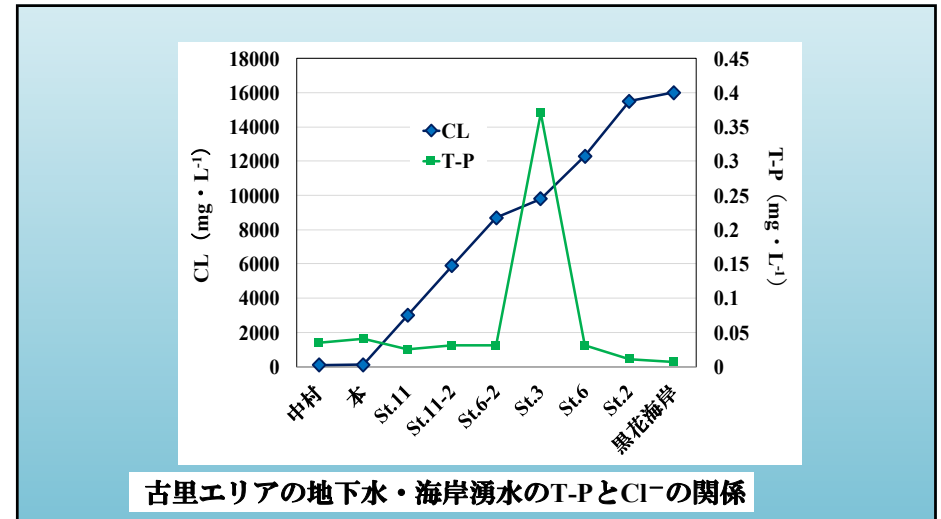
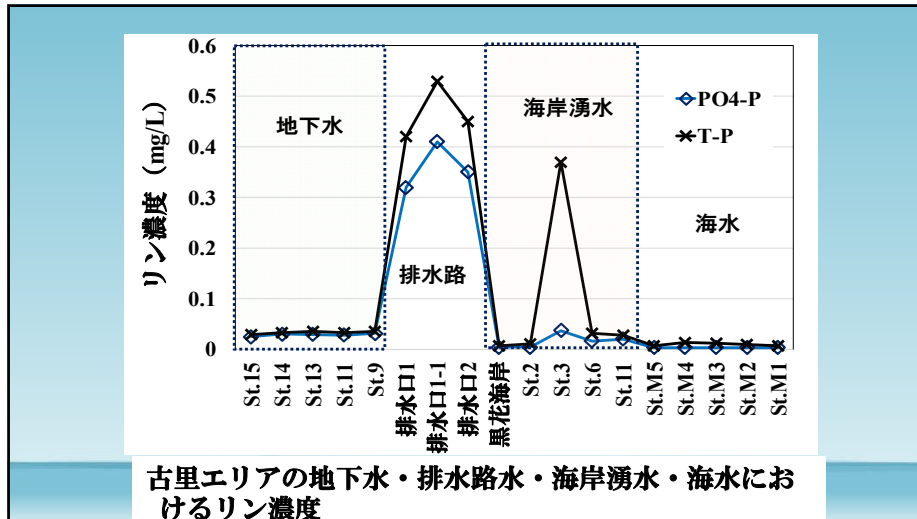
地点	サンゴ被度 (%)	水温 (°C)
茶花沖 (宮崎東)	50	28.5
茶花沖 (フアラシア側)	48	28.5
長崎沖	40	28.5
等田沖	40	28.5
等田沖 (礁池内)	25	28.5
茶崎沖	10	28.5
茶崎沖 (礁池内)	10	28.5
茶崎沖 (礁池内)	75	28.5
茶崎沖 (礁池内)	40	28.5
茶崎沖 (礁池内)	30	28.5
茶崎沖	65	28.5





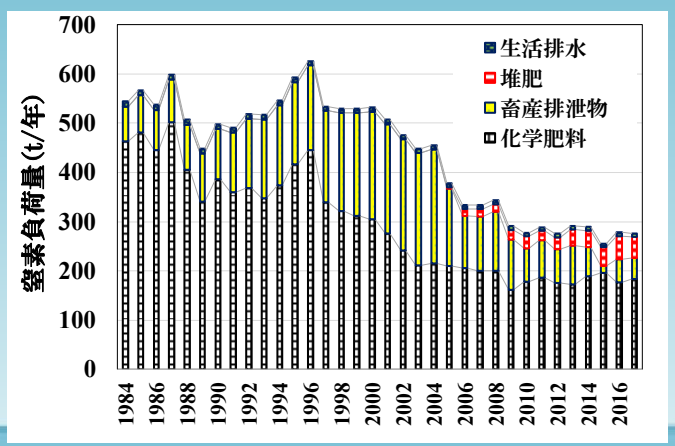
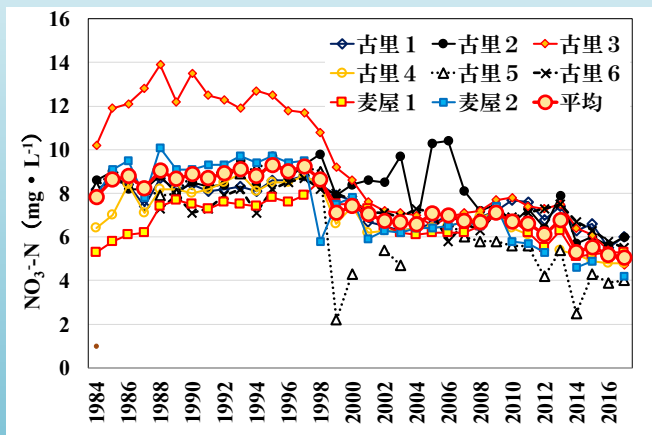
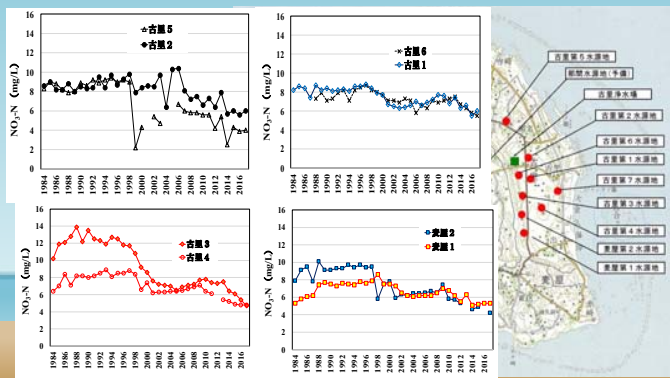


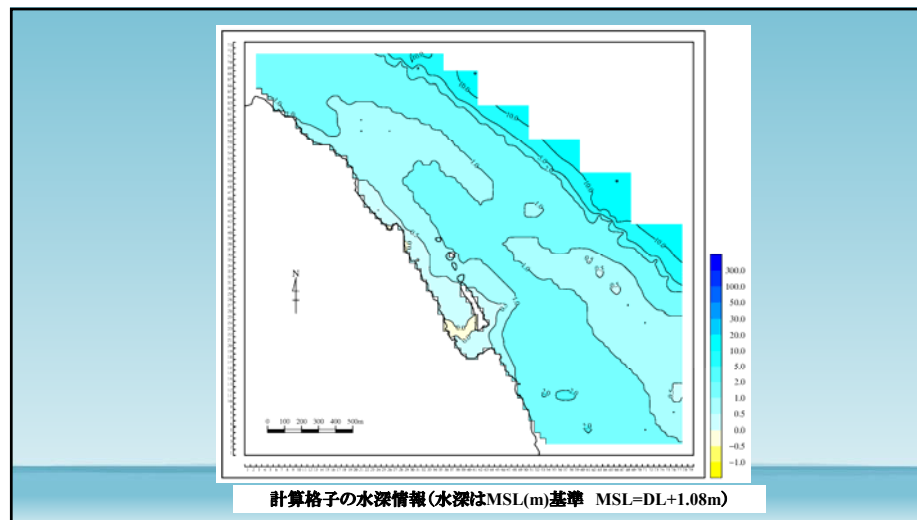
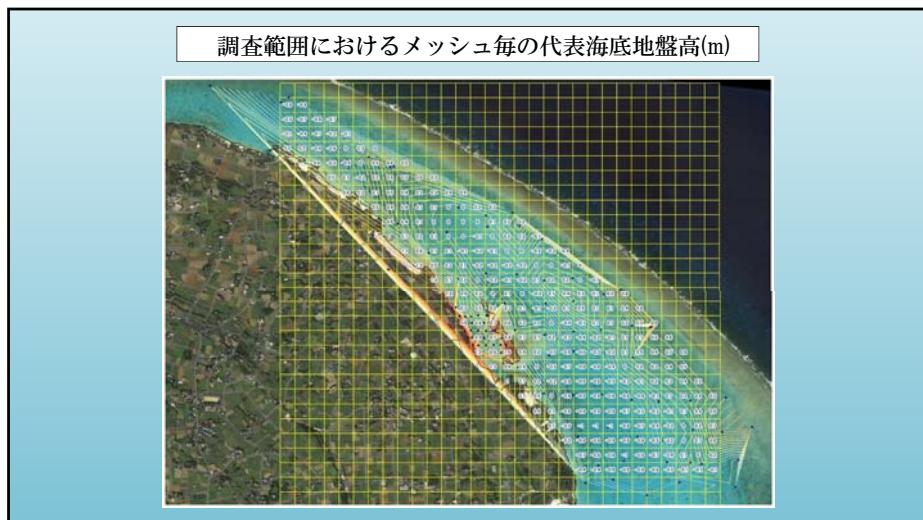
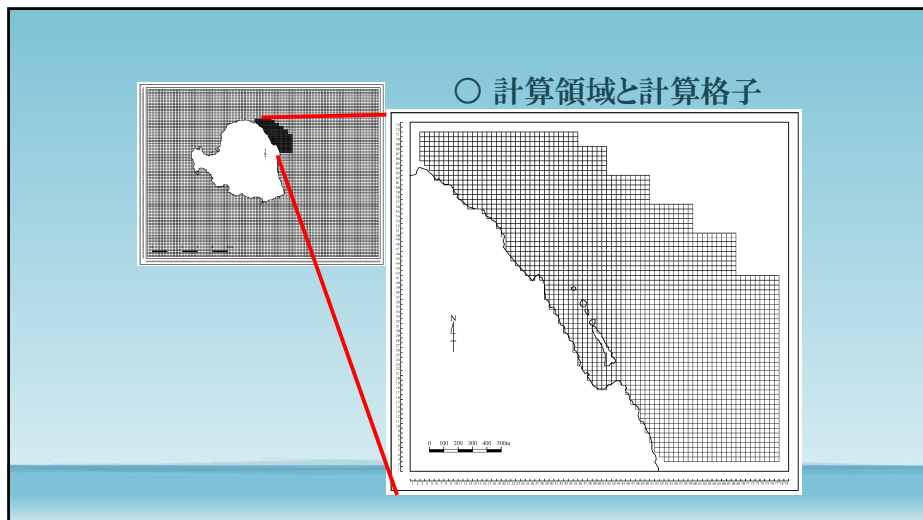




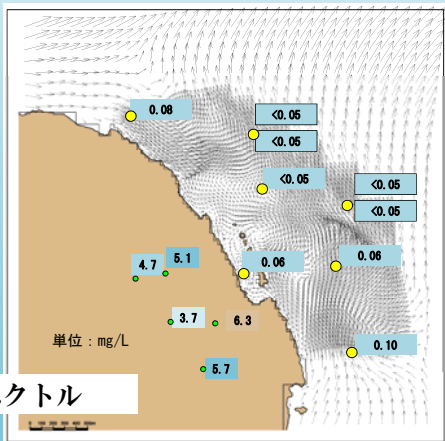
地下水窒素濃度の長期的推移と窒素負荷量の推定

地下水窒素濃度と陸域栄養塩負荷量(窒素)の推定



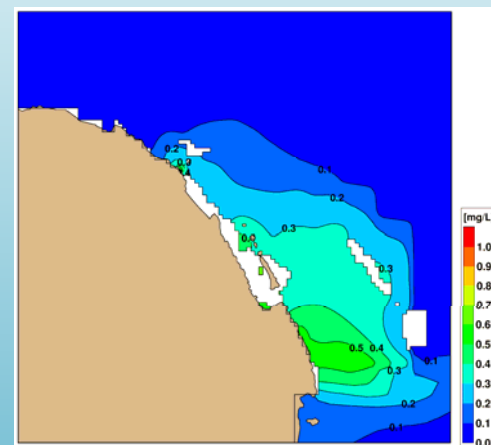


海域潮流場と窒素濃度分布

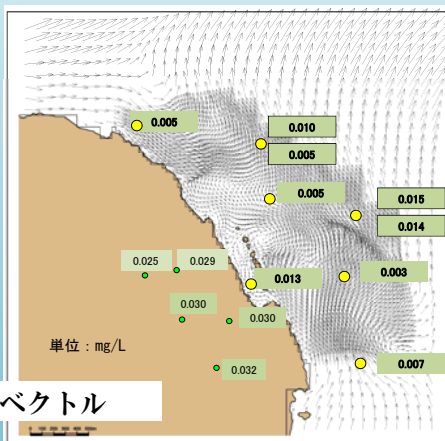


平均流ベクトル

海域潮流場と窒素濃度分布

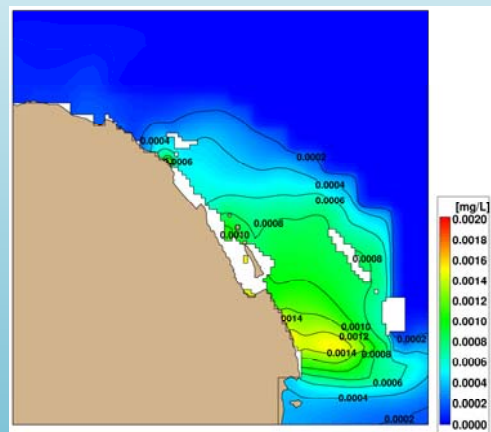


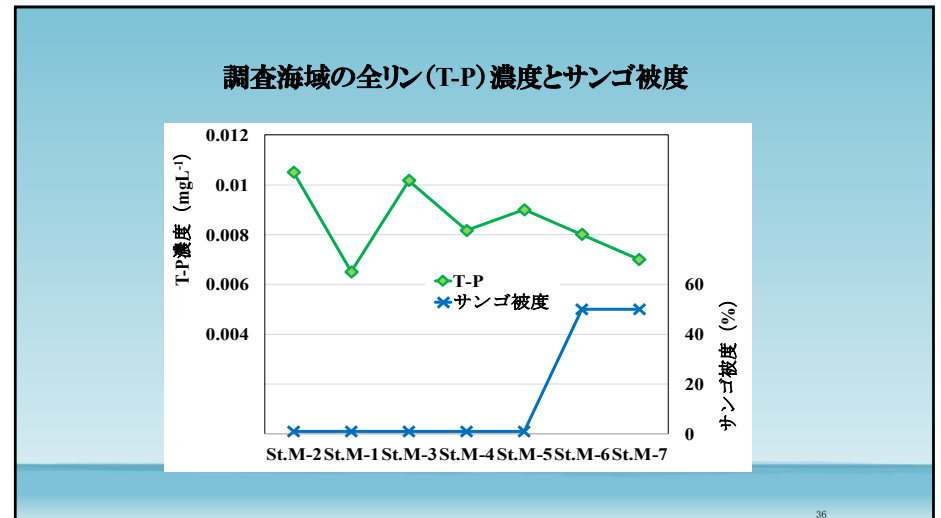
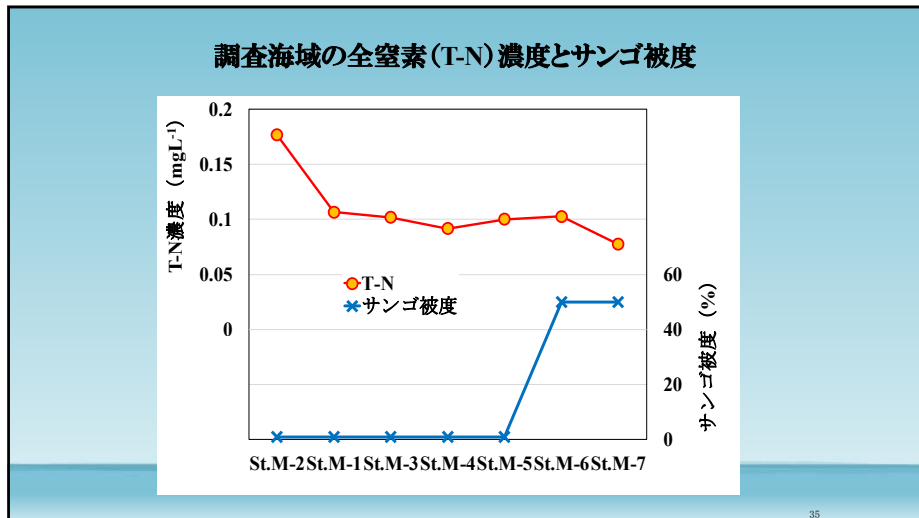
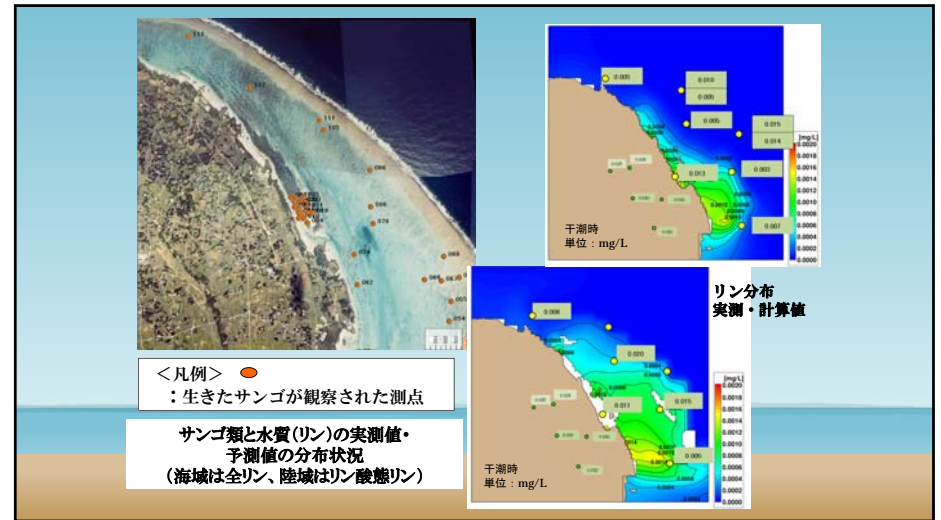
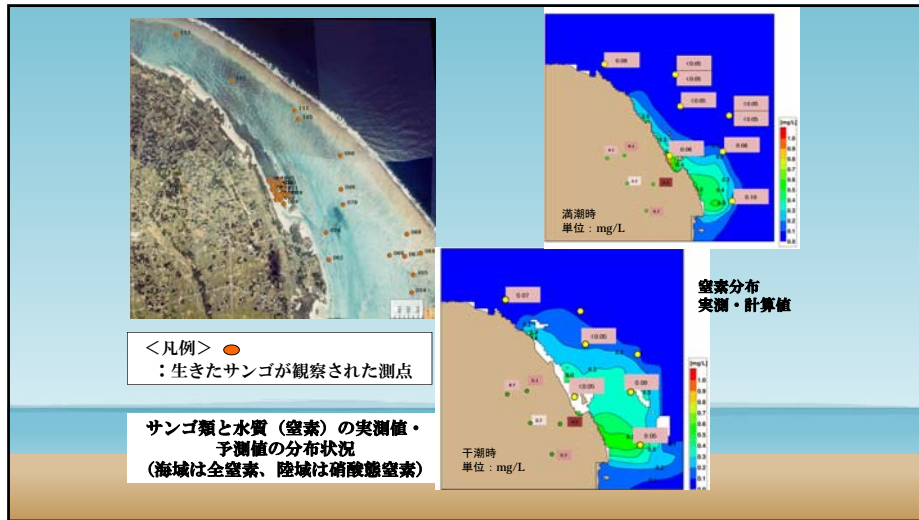
海域潮流場とリン濃度分布

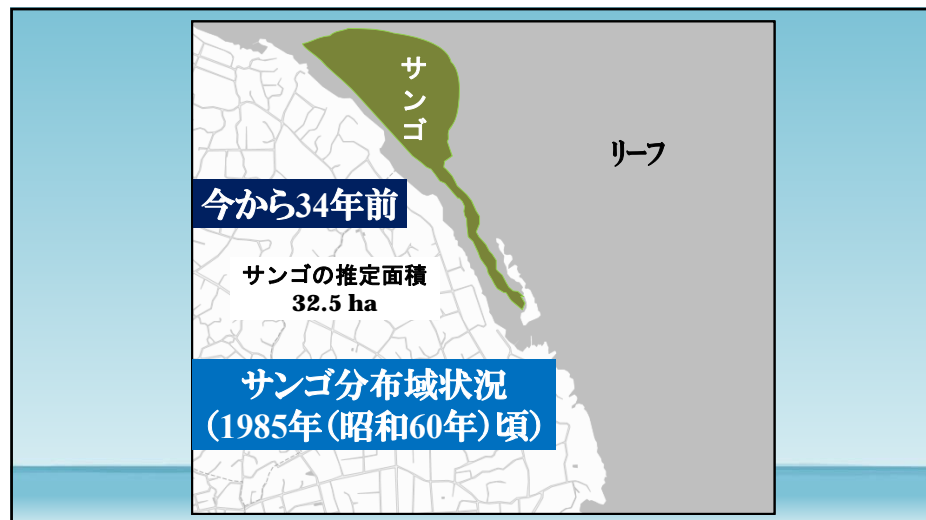
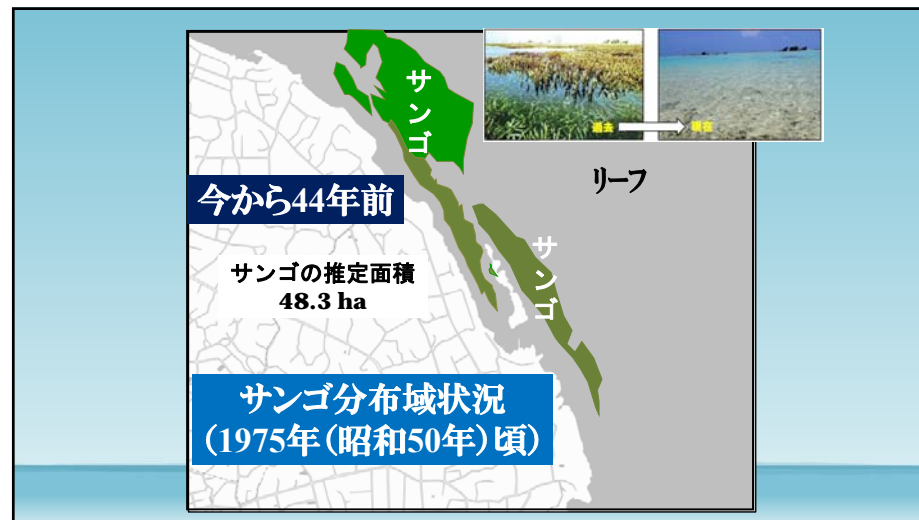


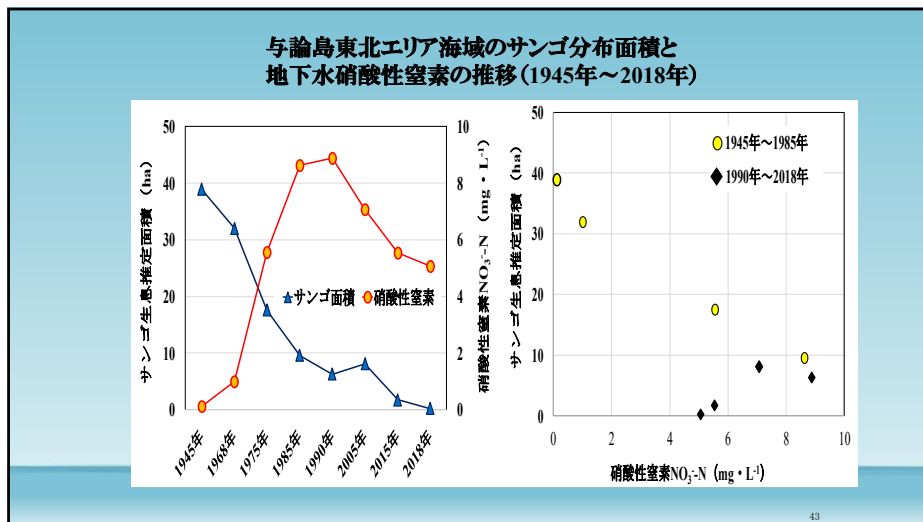
平均流ベクトル

海域潮流場とリン濃度分布









ご清聴ありがとうございました