



# Measuring Protected Area Coverage in Asia

Dr Naomi Kingston

Head of Protected Areas Programme, UNEP-WCMC



# World Database on Protected Areas

Joint product of UNEP & IUCN

- Maintained by UNEP-WCMC



Dates back to 1962 UN List of National Parks and Equivalent Reserves



Subsequent mandates from CBD & IUCN



Incorporates IUCN protected areas management and governance categories

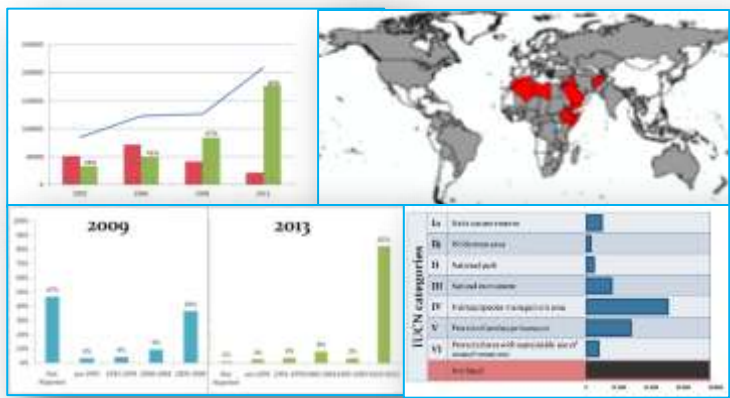




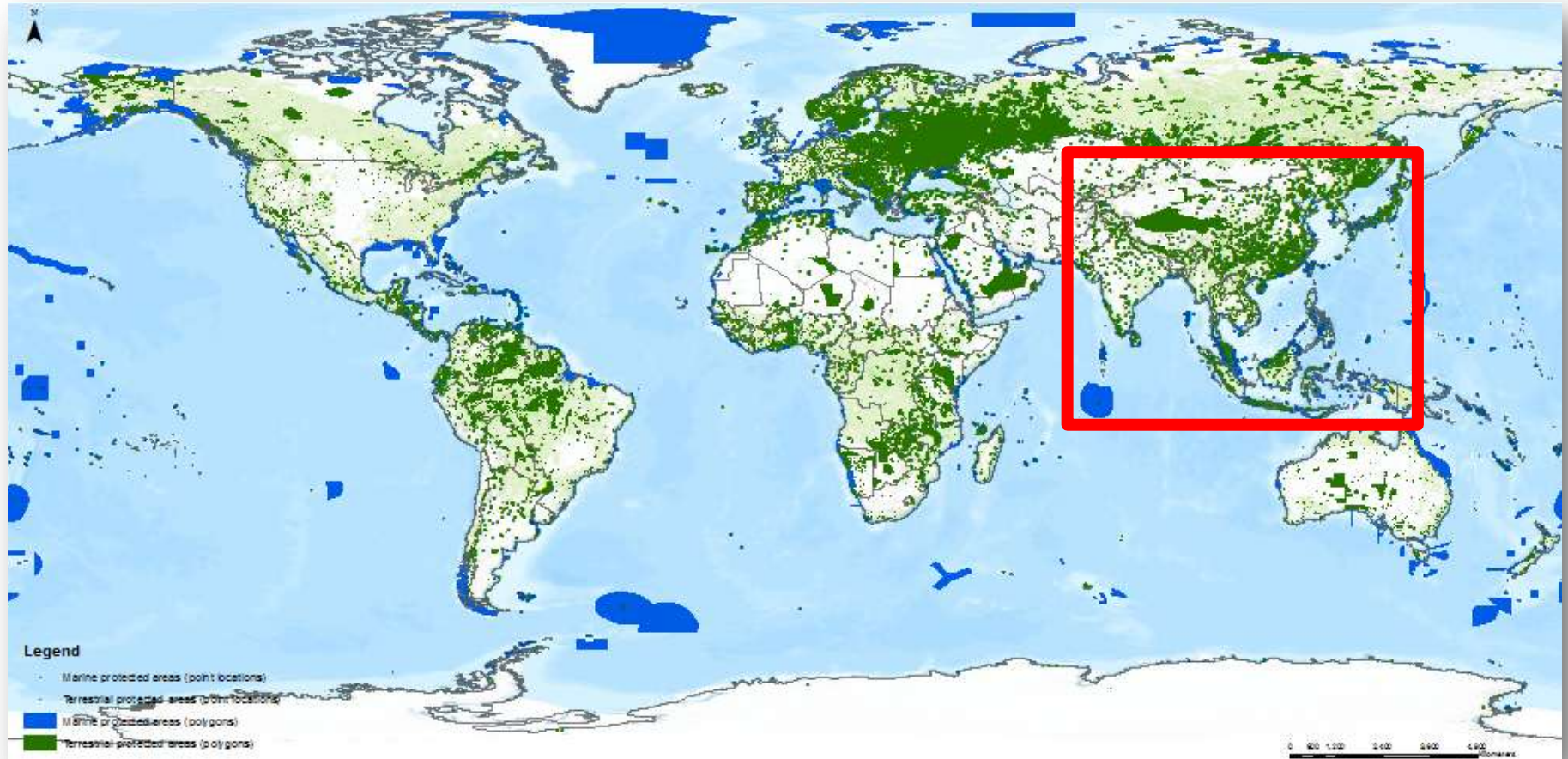
14.6% land; 2.8% marine

-   
Government
-   
Regional
-   
Others

For more information on WDPA:  
Working Group 6: Biodiversity & Protected Areas  
15<sup>th</sup> November, 12:45

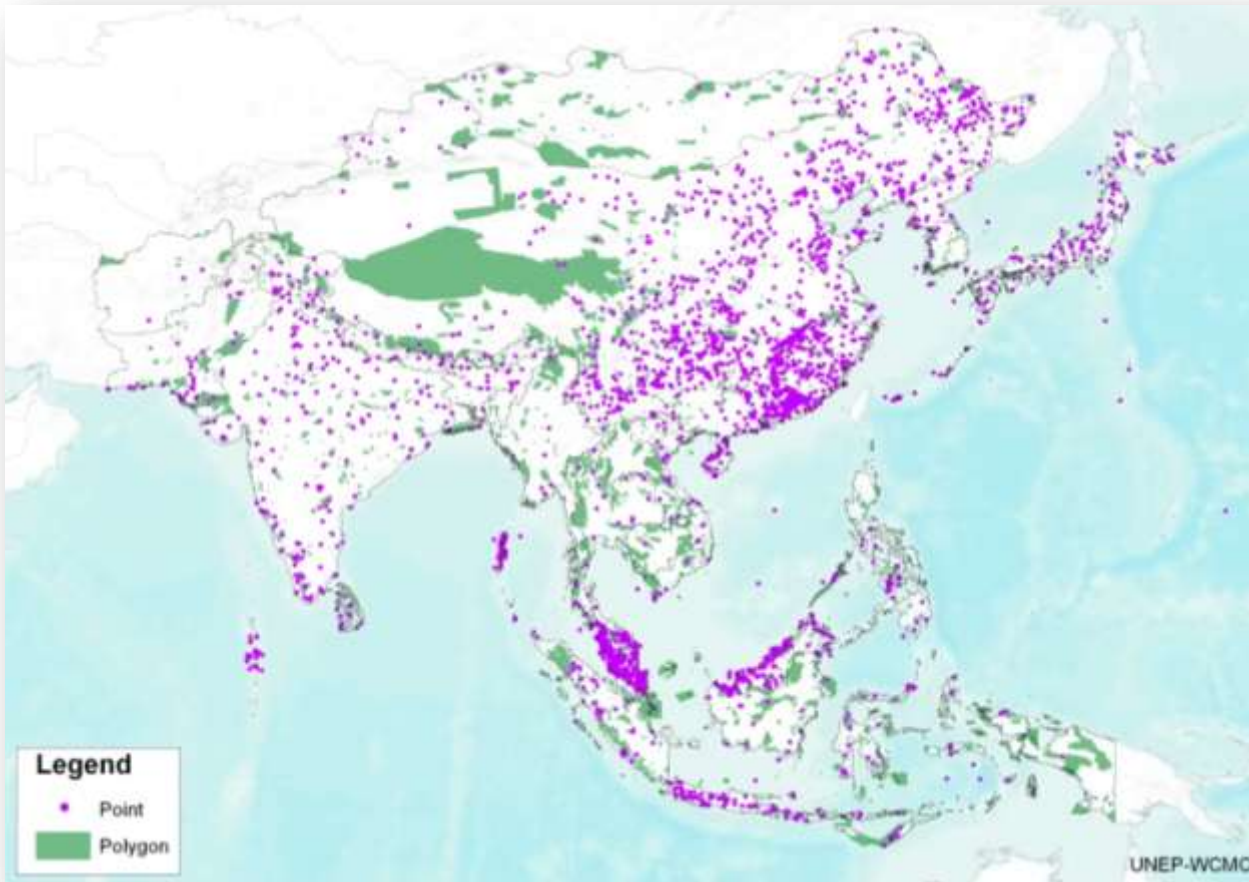


# WDPA Oct. '13: 193,583 records



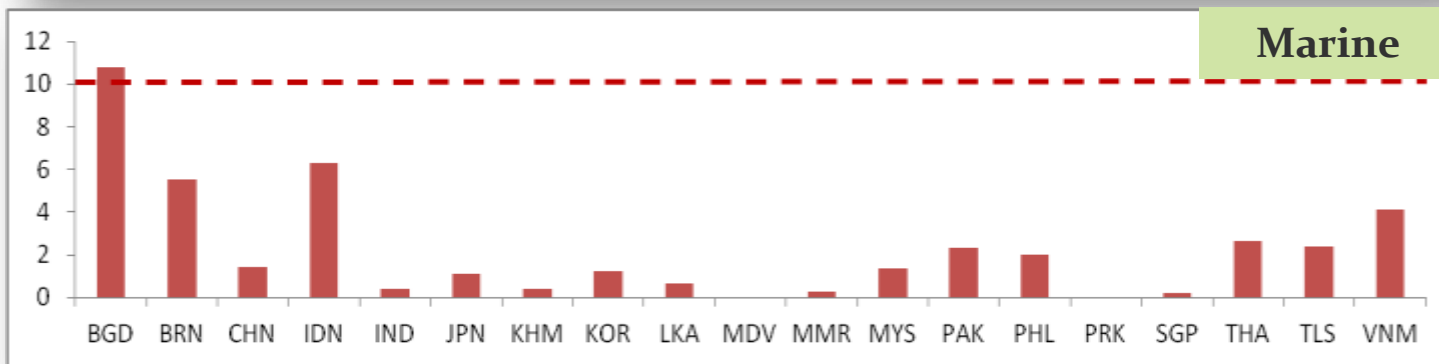
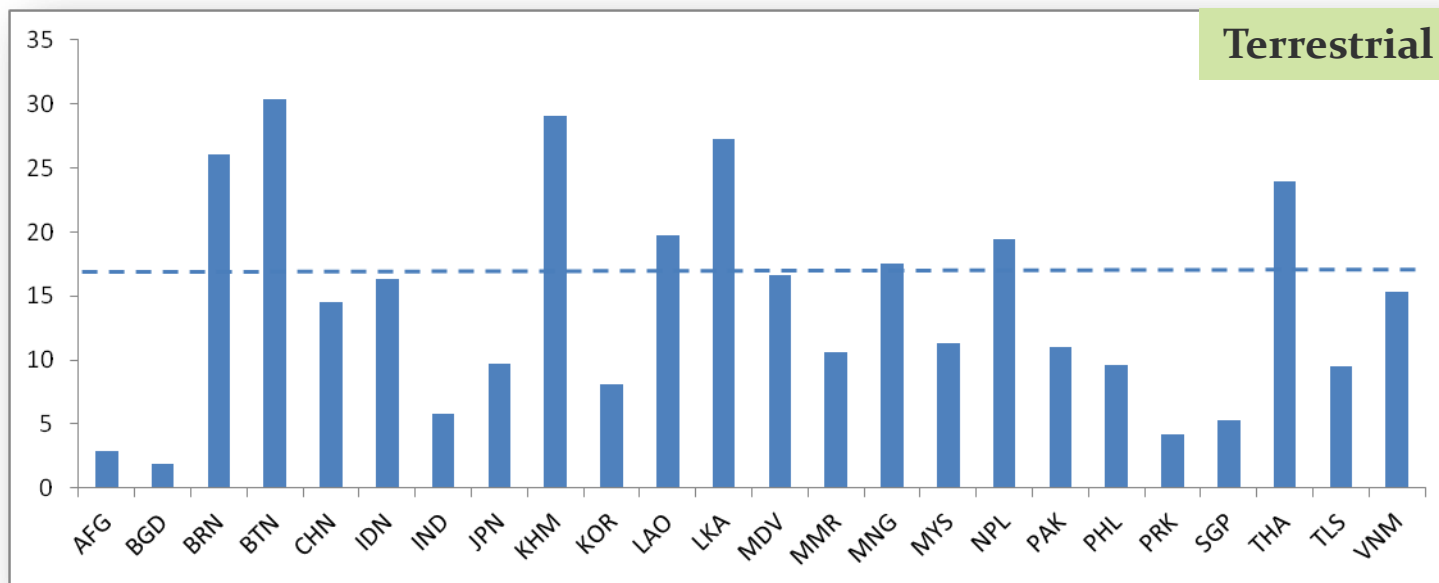
14.6% land; 2.8% marine

# WDPA Oct. '13: 7,043 records



13.2% land; 2.8% marine

# Percentage coverage by country





# Protected Planet Asia report

- Review the status of protected areas in the Asia region
- Assess Asia's progress towards the achievement of protected area targets of the Convention on Biological Diversity (CBD)
- Review of protected area issues of particular relevance to the region



Analysis using World Database on Protected Areas and other relevant datasets

For launch at World Parks Congress



IUCN  
WORLD PARKS  
CONGRESS  
SYDNEY 2014



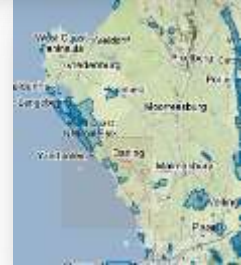
# Protected Planet Asia report

Side event 11:15 on 15<sup>th</sup> November -  
Meeting Room 1

## Challenge to you:

- update you protected areas data with the WDPA by May 2014
- complete all the information fields
- let us know about any assessments of management effectiveness or biodiversity monitoring





# Thank you!

[naomi.kingston@unep-wcmc.org](mailto:naomi.kingston@unep-wcmc.org)

## Hear more!

**Side event on Protected Planet Asia Report**

*11:15 on 15<sup>th</sup> November - Meeting Room 1*

**Presentation on the World Database on  
Protected Areas (WDPA)**

*12:45 on 15<sup>th</sup> November - Working Group 6*