

Welcome to Shinjuku Gyoen National Garden

The present site of Shinjuku Gyoen was originally one part of Edo residence of the Lord Naito, the vassal of Ieyasu Tokugawa. In the Meiji era, it became an agricultural experiment station, and then in 1906 it was made into an imperial garden. After the war in 1949, it was opened to the public as a national garden. The garden contains three styles, Landscape Garden, Formal Garden, and Japanese Traditional Garden, and is considered to be one of the most important modern western style gardens in the Meiji era.



Japanese Traditional Garden

Take a tour to discover historical giant trees



What lies at the center of Landscape Garden is a magnificent tulip tree, which is the symbol of Shinjuku Gyoen. It is one of the first tulip trees planted in Japan during the late 19th century, and thereafter, tulip trees became widespread throughout Japan as a roadside tree. In the garden, there are also many other historical and giant trees which estimated to be more than 100 years old.

Roses in Early Summer

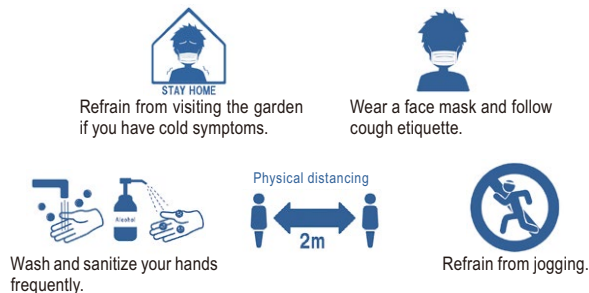
About 500 roses of 100 different species, including the roses which inducted into the Hall of Fame at the World Rose Convention are planted in the rose beds of the Formal Garden. The best seasons are early summer and autumn. Come experience the beautiful fragrant roses!



*The rose events are held at Formal Garden depending on the circumstances. Please check our website.

Please follow the rules to prevent the spread of COVID-19 infection.

*The rules below are subject to change depending on the circumstances.



Shinjuku Gyoen Service Center

11 Naito-machi, Shinjuku-ku, Tokyo, 160-0014

Shinjuku Gyoen website English page

<http://www.env.go.jp/garden/shinjukugyoen/english/index.html>

Published: Shinjuku Gyoen National Garden Management Office, Ministry of the Environment, Japan



Visiting Information

● Opening Hours

	Opening Hours	Gate Closes	Greenhouse	Gate Closes	Information Center / Promenade
10/1 ~ 3/14	9:00AM ~ 4:00PM	4:30PM	9:30AM ~ 3:30PM	4:00PM	9:00AM ~ 4:30PM
3/15 ~ 9/30	9:00AM ~ 5:30PM	6:00PM	9:30AM ~ 5:00PM	5:30PM	9:00AM ~ 6:00PM
7/1 ~ 8/20	9:00AM ~ 6:30PM	7:00PM	9:30AM ~ 6:00PM	6:30PM	9:00AM ~ 7:00PM

● Special Open Days

Open throughout the following periods
March 25 to April 24, November 1 to 15

● Admission Fee

Adults ¥500 (Group discount ¥400)
Seniors (65 and over), Students ¥250 ※with valid ID
Children (junior high school students /15 and under) FREE

● Parking Area

Standard-Sized Cars: ¥600 for the first 2 hours,
¥200 per additional 30 minutes (garden visitor fee) EV (Electric Vehicles) and FCV (Fuel Cell Vehicles):
Free for the first 2 hours (¥600) * Please show your garden admission ticket and vehicle inspection certificate.

● Closed Days

Mondays (if Monday is a public holiday, the following weekday is closed.) December 29 to January 3

● Annual Pass

Adults (including seniors and college students) ¥2,000
High school students ※with valid ID ¥1,000

● Wheelchairs

Free rental wheelchairs are available at all entrances and at the Service Center.

RE100 Target

~Eco-friendly items for strolls~

Shinjuku Gyoen Achieves
RE100 Target of 100%
Renewable Electricity.



City Charge
(Solar powered battery charger for mobile phones)

Bottle Filling Station
(Push the button to supply water)



Notice

To ensure an enjoyable time for all visitors, we ask you to refrain from the following:



We appreciate your cooperation and hope you have a good time.