

Welcome to Shinjuku Gyoen National Garden

The present site of Shinjuku Gyoen was originally one part of Edo residence of the Lord Naito, the vassal of Ieyasu Tokugawa. In the Meiji era, it became an agricultural experiment station, and then in 1906 it was made into an imperial garden. After the war in 1949, it was opened to the public as a national garden. The garden contains three styles, Landscape Garden, Formal Garden, and Japanese Traditional Garden, and is considered to be one of the most important modern western style gardens in the Meiji era.

Flowers in March



① Japanese quince



② Yulan



③ Wild daffodil



④ Peach 'Genpei'

Flowers in April



⑤ Hall crab apple



⑥ Flowering dogwood



⑦ Azalea



⑧ Dove tree

Recommended Cherry Blossom Viewing Areas

There are about 1,000 cherry trees of 68 varieties in Shinjuku Gyoen, ranging from early to late blooming. Here we introduce the most popular viewing areas in the garden.



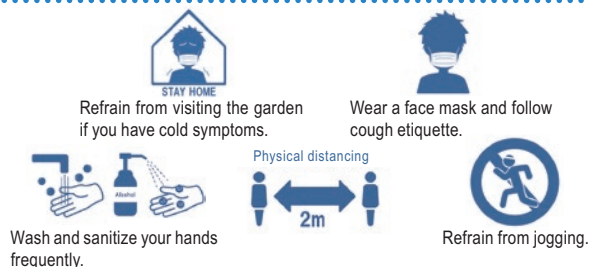
Cherry Tree Area



Landscape Garden

Please follow the rules to prevent the spread of COVID-19 infection.

***The rules below are subject to change depending on the circumstances.**



Shinjuku Gyoen Service Center

11 Naito-machi, Shinjuku-ku, Tokyo, 160-0014

Shinjuku Gyoen website English page

<http://www.env.go.jp/garden/shinjukugyoen/english/index.html>

Published: Shinjuku Gyoen National Garden Management Office, Ministry of the Environment, Japan



Visiting Information

● Opening Hours

	Opening Hours	Gate Closes	Greenhouse	Gate Closes	Information Center / Promenade
10/1 ~ 3/14	9:00AM ~ 4:00PM	4:30PM	9:30AM ~ 3:30PM	4:00PM	9:00AM ~ 4:30PM
3/15 ~ 9/30	9:00AM ~ 5:30PM	6:00PM	9:30AM ~ 5:00PM	5:30PM	9:00AM ~ 6:00PM
7/1 ~ 8/20	9:00AM ~ 6:30PM	7:00PM	9:30AM ~ 6:00PM	6:30PM	9:00AM ~ 7:00PM

● Special Open Days

Open throughout the following periods
March 25 to April 24, November 1 to 15

● Closed Days

Mondays (if Monday is a public holiday, the following weekday is closed.) December 29 to January 3

● Admission Fee

Adults ¥500 (Group discount ¥400)
Seniors (65 and over), Students ¥250 ※with valid ID
Children (junior high school students /15 and under) FREE

● Annual Pass

Adults (including seniors and college students) ¥2,000
High school students ※with valid ID ¥1,000

● Wheelchairs

Free rental wheelchairs are available at all entrances and at the Service Center.

● Parking Area

Standard-Sized Cars: ¥600 for the first 2 hours,
¥200 per additional 30 minutes (garden visitor fee) EV (Electric Vehicles) and FCV (Fuel Cell Vehicles):
Free for the first 2 hours (¥600) * Please show your garden admission ticket and vehicle inspection certificate.

RE100 Target

~Eco-friendly items for strolls~

Shinjuku Gyoen Achieves
RE100 Target of 100%
Renewable Electricity.



City Charge
(Solar powered battery charger for mobile phones)

Bottle Filling Station
(Push the button to supply water)



Notice

To ensure an enjoyable time for all visitors, we ask you to refrain from the following:

- Using toys, sports equipment such as badminton, soccer balls, and Frisbees (Except for Kid's Area)
- Playing musical instruments
- Bringing and drinking alcoholic beverages
- Entering with animals
Assistance dogs such as guide dogs, service dogs and hearing assistance dogs are allowed to enter with visitors
- Smoking including electronic cigarettes
- Flying drones
- Taking out or bringing in any plants or animals, or feeding animals
- <Prohibited> Commercial photography
<Permission Required> Photo-shooting using reflector boards (bigger than 32 cm), or models
- Bringing in tents or parasols, and use of products that cause fire or smoke

We appreciate your cooperation and hope you have a good time.