

Welcome to Shinjuku Gyoen National Garden

The present site of Shinjuku Gyoen was originally one part of Edo residence of the Lord Naito, the vassal of Ieyasu Tokugawa. In the Meiji era, it became an agricultural experiment station, and then in 1906 it was made into an imperial garden. After the war in 1949, it was opened to the public as a national garden. The garden contains three styles, Landscape Garden, Formal Garden, and Japanese Traditional Garden, and is considered to be one of the most important modern western style gardens in the Meiji era.



Landscape Garden

Let's cool off at Kyu-Goryo-Tei

Kyu-Goryo-Tei is a building given by Japanese people in Taiwan to commemorate the wedding of Crown Prince Hirohito, who became Emperor Showa. The building was originally designed to cool off while walking in the garden, and looking at the Japanese garden, you can feel the cool breeze.



Experience COOL SHARE

Although Shinjuku Gyoen is located in the middle of Tokyo, "cool island phenomenon," which temperature is 1 to 3 degrees lower than the city center, is considered to occur. This phenomenon is expected to provide cool air to the city.



Scan the QR code to search cool off spots



COOL SHARE



Season when bees become active

Large beehives are sometimes found in Shinjuku Gyoen in August and September. Bees generally attack people to protect their hives or when they feel threatened. Please beware of the following matters.



Do not ward off bees with your hands.



Do not leave open cans or plastic bottles.



Do not go into wooded areas or bushes.



Be careful if you wear dark clothing or anything that has a strong smell.

New Facilities

Shinjuku Gyoen Museum

Enjoy the history of Shinjuku Gyoen through exhibits and videos.

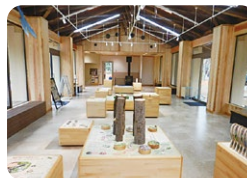
- Location: Near Okido Gate
- Admission Fee: Free



Satoyama Woodlands Experience (Rest House)

This facility makes nature observation in the Mother and Child Woods more enjoyable.

- Location: Mother and Child Woods



Shinjuku Gyoen Service Center

11 Naito-machi, Shinjuku-ku, Tokyo, 160-0014
Shinjuku Gyoen official website (English)

<http://www.env.go.jp/garden/shinjukugyoen/english/index.html>

Published: Shinjuku Gyoen National Garden Management Office,
Ministry of the Environment, Japan



Visiting Information

● Opening Hours

	Opening Hours	Gate Closes	Greenhouse	Gate Closes	Information Center / Promenade
10/1 ~ 3/14	9:00AM ~ 4:00PM	4:30PM	9:30AM ~ 3:30PM	4:00PM	9:00AM ~ 4:30PM
3/15 ~ 9/30	9:00AM ~ 5:30PM	6:00PM	9:30AM ~ 5:00PM	5:30PM	9:00AM ~ 6:00PM
7/1 ~ 8/20	9:00AM ~ 6:30PM	7:00PM	9:30AM ~ 6:00PM	6:30PM	9:00AM ~ 7:00PM

● Special Open Days

Open throughout the following periods
March 25 to April 24, November 1 to 15

● Admission Fee

Adults ¥500 (Group discount ¥400)
Seniors (65 and over), Students ¥250 ※with valid ID
Children (junior high school students / 15 and under) FREE

● Parking Area

Standard-Sized Cars: ¥600 for the first 2 hours,
¥200 per additional 30 minutes (garden visitor fee) EV (Electric Vehicles) and FCV (Fuel Cell Vehicles):
Free for the first 2 hours (¥600) *Please show your garden admission ticket and vehicle inspection certificate.

● Closed Days

Mondays (if Monday is a public holiday, the following weekday is closed.) December 29 to January 3

● Annual Pass

Adults (including seniors and college students) ¥2,000
High school students ※with valid ID ¥1,000

● Wheelchairs

Free rental wheelchairs are available at all entrances and at the Service Center.

RE100 Target

~Eco-friendly items for strolls~

Shinjuku Gyoen Achieves
RE100 Target of 100%
Renewable Electricity.



City Charge
(Solar powered battery
charger for mobile phones)

Bottle Filling Station
(Push the button to supply water)



Notice

To ensure an enjoyable time for all visitors,
we ask you to refrain from the following:



Using toys, sports equipment such as badminton, soccer balls, and Frisbees (except for Kids Area)



Playing musical instruments



Bringing and drinking alcoholic beverages



Entering with animals
Assistance dogs such as guide dogs, service dogs and hearing assistance dogs are allowed to enter with visitors



Smoking including electronic cigarettes



Flying drones



Taking out or bringing in any plants or animals, or feeding animals



<Prohibited> Commercial photography
<Permission Required> Photo-shooting using reflector boards (bigger than 32 cm), or models



Bringing in tents or parasols, and use of products that cause fire or smoke

We appreciate your cooperation and hope you have a good time.