



Challenges, good practices, and possible approaches for improving the function of the PIC procedure

**Directorate of Hazardous and Non Hazardous Management
Ministry of Environment and Forestry**



OVERVIEW REGULATIONS

IMPORT OF HAZARDOUS WASTE

PROHIBITED

TRANSIT → allowed with PIC Procedure

EXPORT OF HAZARDOUS WASTE

NEED
NOTIFICATION
FROM MoEF MINISTRY

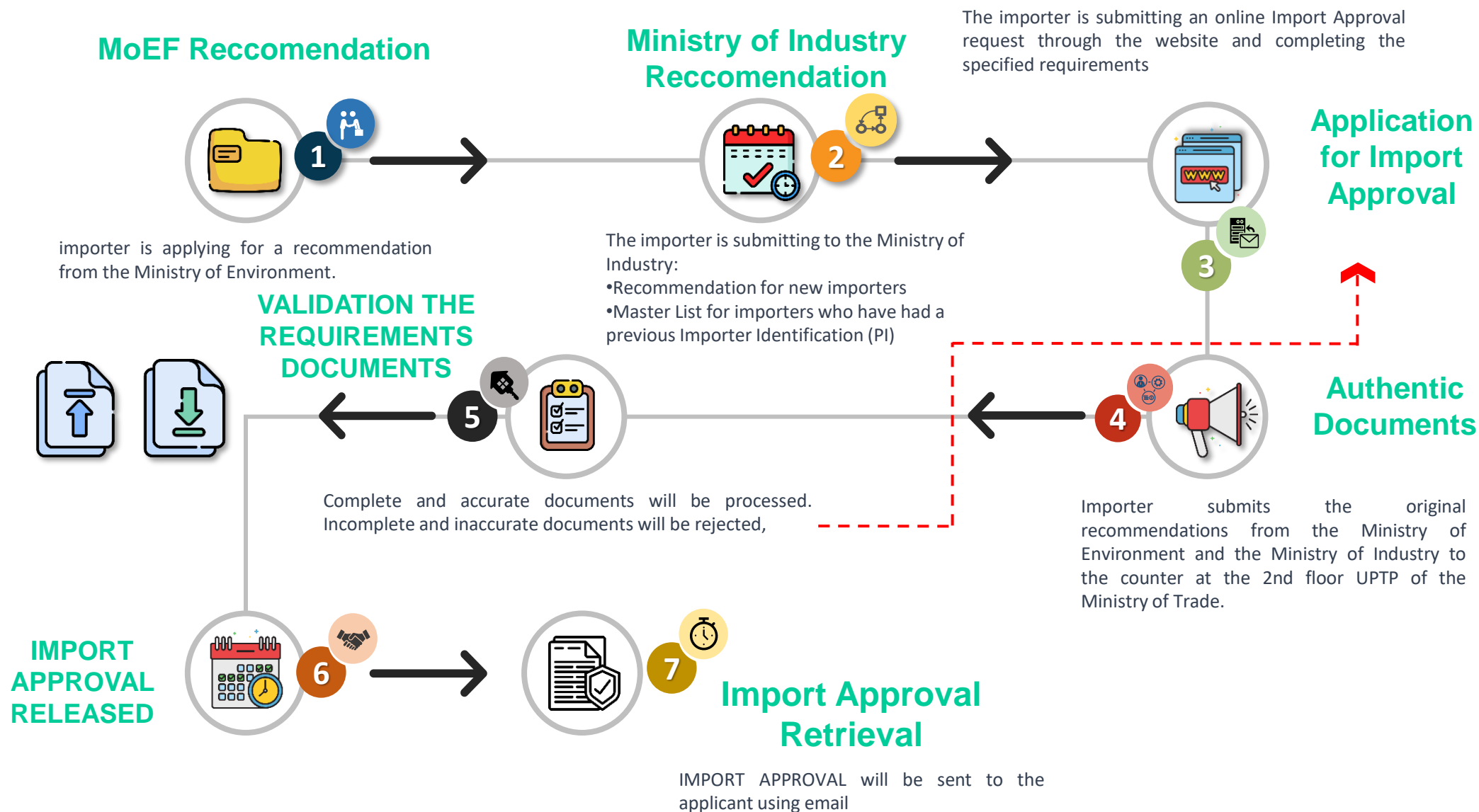
IMPORT OF NON HAZARDOUS WASTE FOR RECYCLE

NEED
IMPORT APPROVAL
FROM MINISTRY OF TRADE



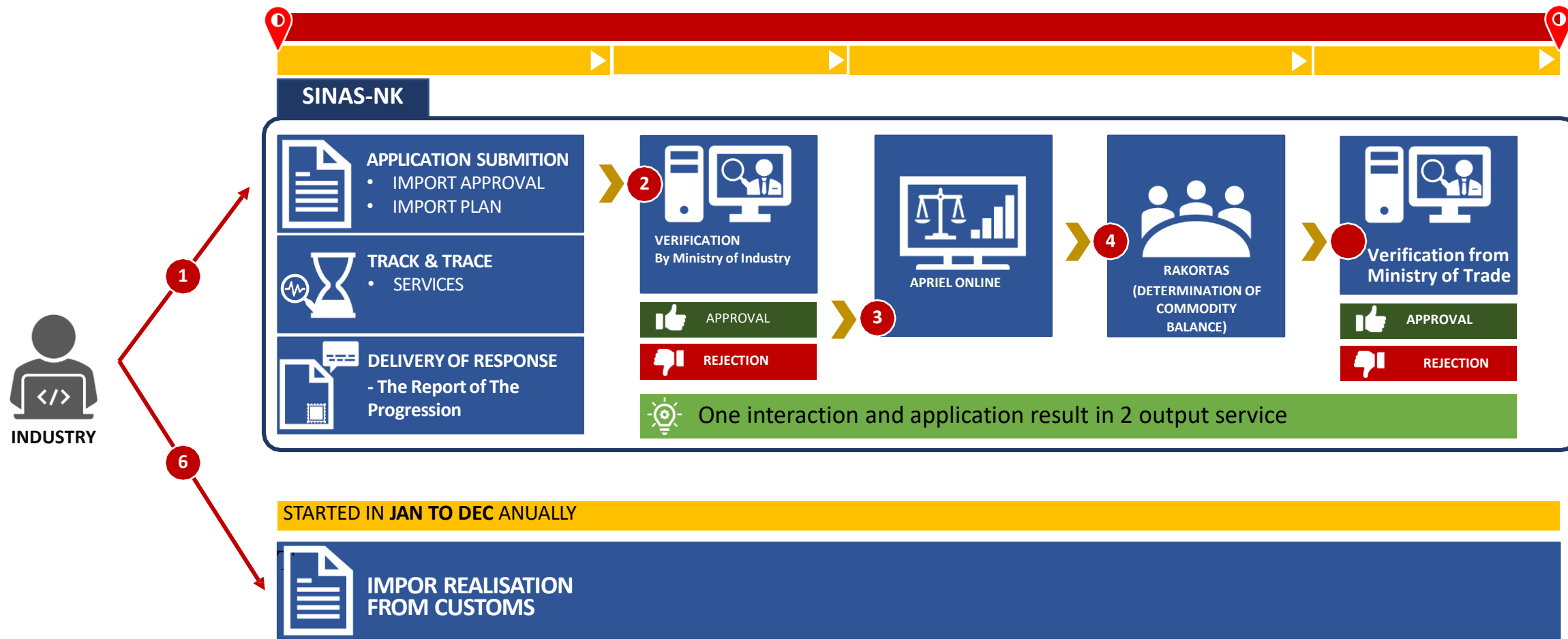


PROCESS FLOW OF NEW APPLICATION FOR WASTE IMPORT APPROVAL BEFORE DEVELOPMENT OF SINAS





UPDATED PROCESS FLOW OF NEW APPLICATION FOR WASTE IMPORT APPROVAL



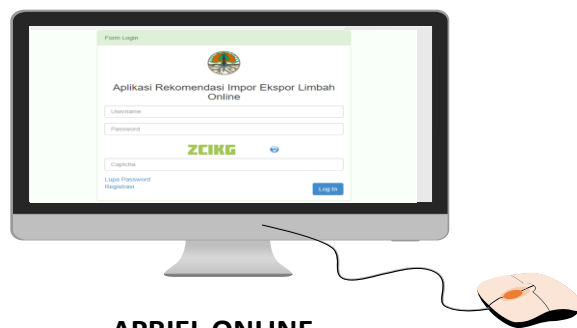


EXISTING PROCESS FLOW OF NEW APPLICATION FOR WASTE IMPORT RECOMMENDATIONS AND NOTIFICATION FOR EXPORT





THE CHALLENGES IN IMPLEMENTING THE ONLINE PIC



APRIEL ONLINE
Waste Import and Export
Recommendation Application

**Status in
Application
Development**



**Finalization and
Enforcement**



SINAS –PORTAL INSW



**END YEAR
2022**

BENEFIT

1. Online import submission and required documents can be uploaded online
2. Application history can be tracked quickly
3. Document requirements are not lost
4. Submission status can be seen by users
5. Guaranteed service time

Challenges

1. Resistance to change from stakeholder that is used to with Previous system
2. Difficult to coordinate domestically with related authorities and/or industry stakeholders



THANK YOU
TERIMA KASIH



WASTE IMPORT PROBLEM

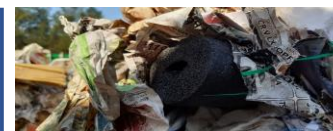
CONTAMINATED WITH OTHER WASTE



CONTAMINATED WITH HAZARDOUS WASTE



NOT
HOMOGEN





Paper Scrap Contaminated With Other Waste



Used cloth



Used Accu



Used syringed





Paper Scrap Contaminated With Medical Waste



Used Syringe



Used Infusion Hose

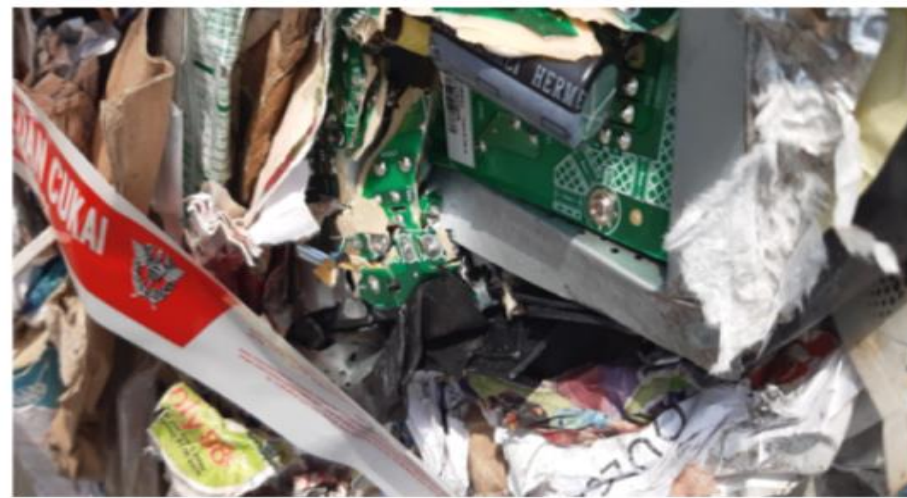
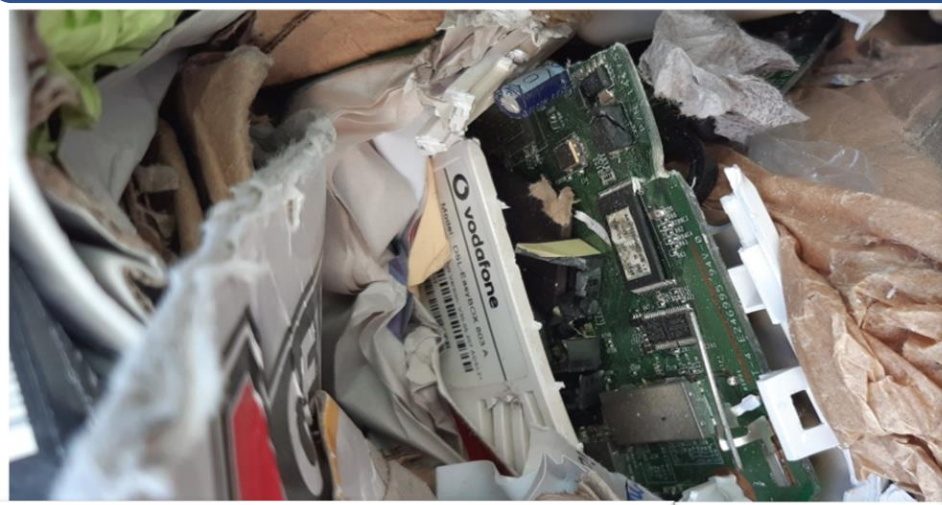


Ampoule used injection



Used Medicine Packaging

PAPER SCRAP CONTAMINATED WITH E-WASTE

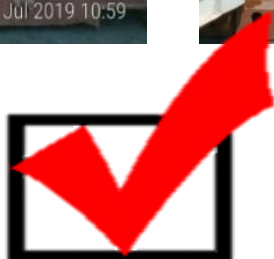
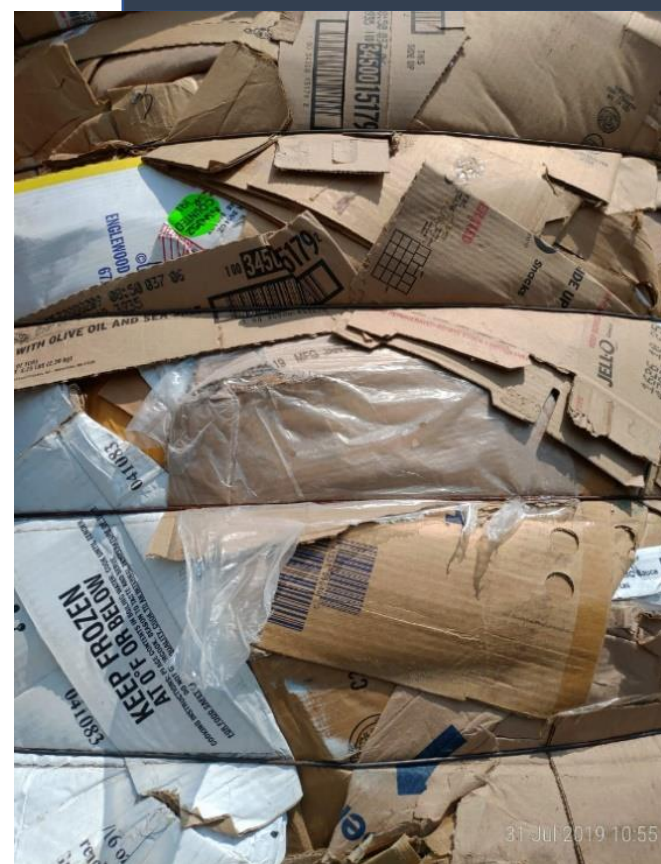


E-WASTE





CLEAN PAPER SCRAP WASTE



Accepted