

Asian Network Workshop 2022

Waste Import and Export Control Implementation of the E-waste Control and the Plastic Waste Amendments

Environmental Protection Department
The Government of the Hong Kong Special Administrative Region
of the People's Republic of China



Content

- ▶ Introduction
- ▶ Waste Import / Export Control
- ▶ E-waste Import / Export Control
- ▶ Waste Plastics Import / Export Control
- ▶ Metal Scrap Import / Export Control
- ▶ Follow-up Action
- ▶ Closing Remarks

Introduction

Introduction

- ▷ Location
- ▷ Gateway to China
- ▷ Efficient harbour facilities
- ▷ A major transshipment port in Southeast Asian region

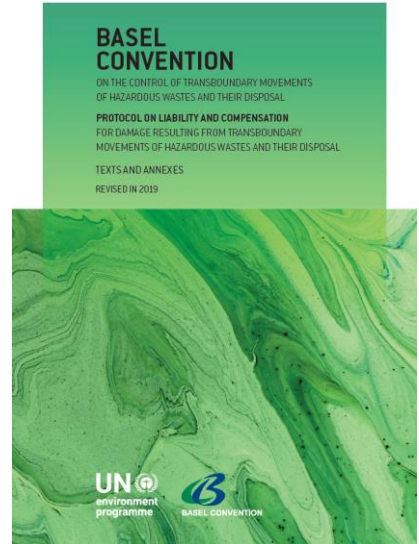


Waste Import / Export Control



Basel Convention

- ▶ Applies to Hong Kong through China's ratification
- ▶ Environmental Protection Department (EPD) designated as the Competent Authority (CA) for Hong Kong
- ▶ Requirements incorporated into the Waste Disposal Ordinance (WDO), Cap. 354, in Hong Kong



Waste Import / Export Control

- ▶ **Waste** is –
 - any substance or article which is **discarded** or otherwise **dealt with as waste** shall be presumed to be waste until the contrary is proved
 - any substance or article once **given up by its original owners or users**, irrespective whether it is still functional or can be sold for a value



Waste Import / Export Control

- ▶ Waste meeting the following conditions does not require an import / export permit
 - Waste Specified in the 6th Schedule of the WDO,
 - Uncontaminated, and
 - Imported or exported for recycling



Examples of Illegal Waste Intercepted (1)



Waste printed circuit board assemblies

Examples of Illegal Waste Intercepted (2)



Waste monitors

Examples of Illegal Waste Intercepted (3)



Waste laptop and desktop computers

Examples of Illegal Waste Intercepted (4)



Waste toner cartridges

Examples of Illegal Waste Intercepted (5)



Waste ink cartridges

Examples of Illegal Waste Intercepted (6)



Waste mobile phone displays

Examples of Illegal Waste Intercepted (7)



All types of waste batteries

Examples of Illegal Waste Intercepted (8)



Contaminated Waste Plastics

Examples of Illegal Waste Intercepted (g)



Contaminated Metal Scrap

E-Waste Import / Export Control



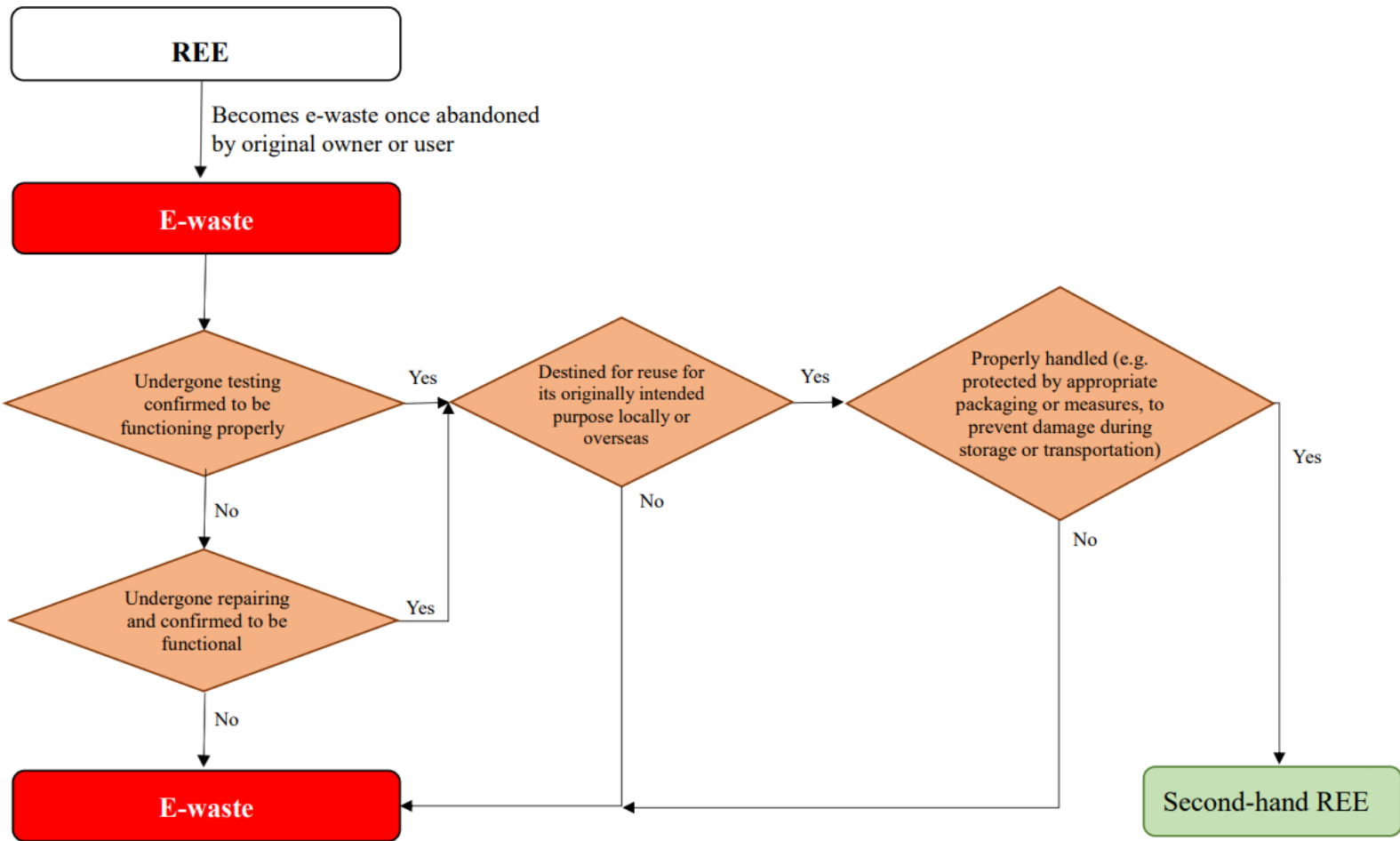
E-waste Import / Export Control

- ▶ Air-conditioners, refrigerators, washing machines, televisions, computers, printers, scanners and monitors are covered by a Producer Responsibility Scheme
- ▶ Import / export permit control effective since 31 December 2018



E-waste Import / Export Control

- ▶ E-waste that has undergone proper testing / repairing may be classified as “second-hand electrical equipment”
- ▶ Second hand electrical equipment -
 - used for its original intended purpose
 - testing and repair report available
 - proper packaging



Waste Plastics Import / Export Control

Waste Plastics Import / Export Control (1)

- ▷ Plastic Waste Amendments effective since 1 Jan 2021
- ▷ Non-regulated waste plastics (B3011 of Annex IX of the Basel Convention)
- ▷ Regulated waste plastics (all other waste plastics not classified as the above “non-regulated waste plastics”, including Y48 of Annex II, A3210 of Annex VIII of the Basel Convention)
- ▷ Details of control in Hong Kong -
https://www.epd.gov.hk/epd/english/environmentinhk/waste/guide_ref/guide_wiec_tcs6.html



Waste Plastics Import / Export Control (2)

	Import	Export	Re-export
Regulated waste plastics	Prior Notification + Permit Required		Prior declaration to EPD
Non-regulated waste plastics		Prior declaration to EPD	



Waste Plastics Import / Export Control (3)

	Import	Export	Re-export
	(Unit: thousand tonnes)		
2019	614	3	232
2020	298	7	105
2021	88	0.4	27
2022 (up to Aug)	36	0.8	12



Non-regulated waste plastics (1)

- ▶ Types of waste plastics as specified in B3011 of the Basel Convention
- ▶ **Uncontaminated** -
“**clean** and contain **no more than 0.5% impurities** by weight. Impurities include other types of waste plastics, waste paper, waste glass, etc.”

Non-regulated waste plastics (2)

- ▶ Recycling in **Environmentally Sound Manner**
 - Thermal treatment for production of recycled plastic pellets
 - Production of new plastic products
 - Chemical recycling
- ▶ Having adequate pollution control in recycling facilities



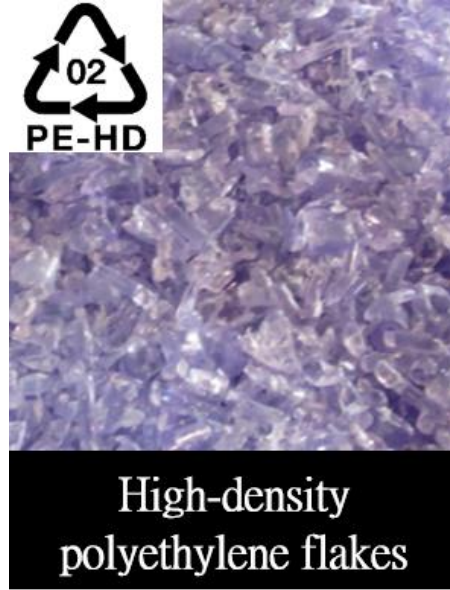
Non-regulated waste plastics (3)

- ▷ Prior declaration to EPD before shipment departs from the state of export to prove the shipments comply with the Basel Convention and the WDO
- ▷ Declaration form & supporting documents
 - Bill of Lading or equivalent
 - Photos (e.g. photos of waste plastics, loading photos, photos of recycling facilities)
 - Information on the recycling facilities
 - Contract documents with the recycling facilities

Non-regulated waste plastics (4)

- ▶ Information and document received to be shared with states concerned
- ▶ Feedback from competent authorities to be passed to concerned importers / exporters
- ▶ Ensure legality and smooth passage of shipment

Non-regulated waste plastics (6)



Non-regulated waste plastics (7)



Regulated waste plastics (1)

- ▶ Prior Informed Consent (PIC) procedures adopted for communication with overseas Competent Authorities
- ▶ Permit to be issued to importers / exporters if the shipments to be imported into or exported from Hong Kong fulfil WDO's requirements (e.g. recycling in environmental sound manner, provision of liability insurance and bank guarantee)
- ▶ NO permit issued for re-export, but declaration is required

Regulated waste plastics (2)



Contaminated Waste Plastics
(mixed with impurity exceeding 0.5% by weight)

Regulated waste plastics (3)



Waste PVC

Regulated waste plastics (4)



Electroplated Waste Plastics

Metal Scrap Import / Export Control



Metal Scrap Import / Export Control (1)

- ▶ Import / export of non-hazardous metal scrap (e.g. aluminium, copper, ferrous metals) allowed as long as,
 - Impurity level below threshold (for non-ferrous metals: 0.5%; ferrous metals: 1%)
 - Imported / exported for recycling



Metal Scrap Import / Export Control (2)



Uncontaminated Aluminium Scrap

Metal Scrap Import / Export Control (3)



Contaminated Aluminium Scrap
(import not allowed)

Metal Scrap Import / Export Control (4)



Typical impurities found in unacceptable shipments
(e.g. waste wood, waste plastics, waste sponge, debris, rag)

Metal Scrap Import / Export Control (5)



Typical impurities found in unacceptable shipments
(e.g. waste wood, waste plastics, waste sponge, debris, rag)

Follow-up Action

Follow-up Action

- ▶ All illegal waste shipments intercepted were repatriated to the original states of export
- ▶ Investigation carried out for each case
- ▶ Instigate prosecution action if sufficient evidence is collected



Closing Remarks

Collaboration with Overseas Competent Authorities

- ▶ To strengthen communication with other Competent Authorities' control over controlled waste ensuring legitimacy and smooth operation of the transboundary movement of controlled waste (including e-waste and plastic waste)
- ▶ To keep concerned trades in Hong Kong informed about other Competent Authorities' control
- ▶ To share intelligence as appropriate

Contact

For enquiry, please email us:

wasteimportandexport@epd.gov.hk

Thank you