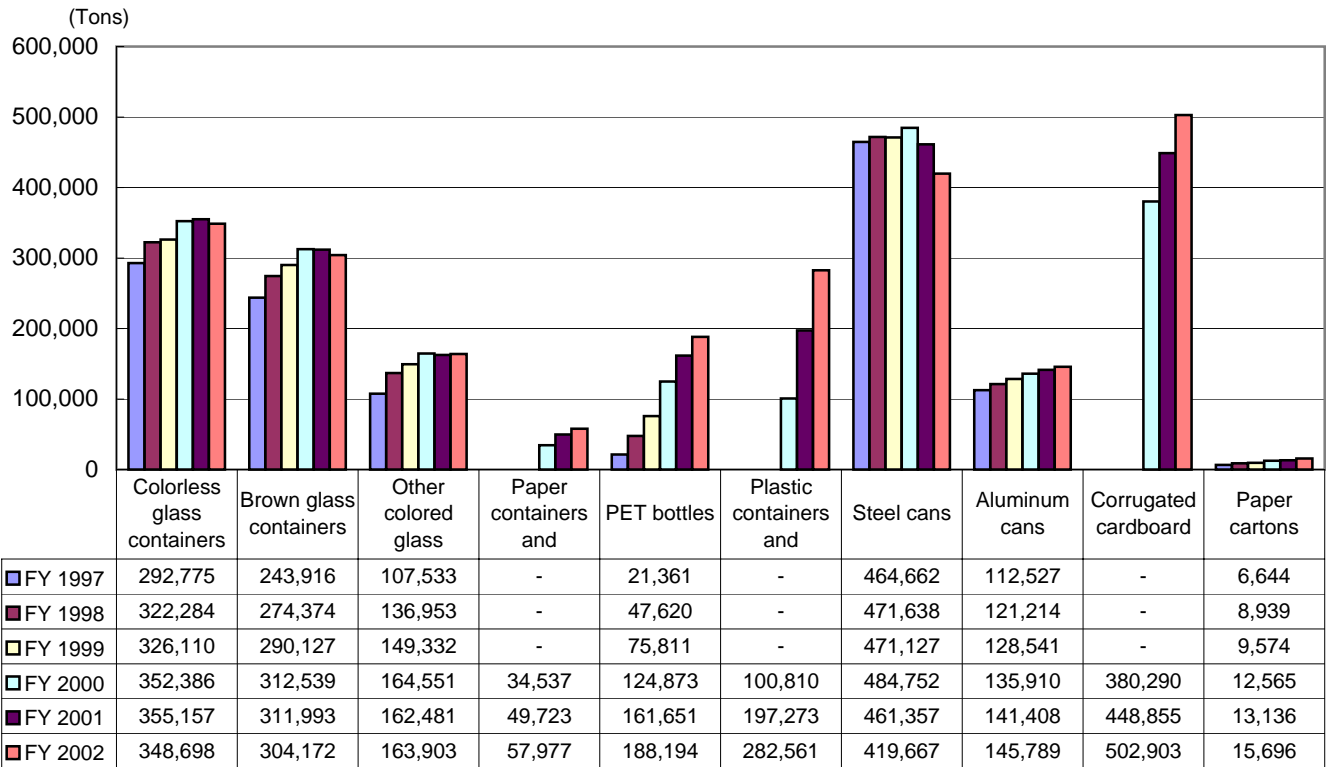
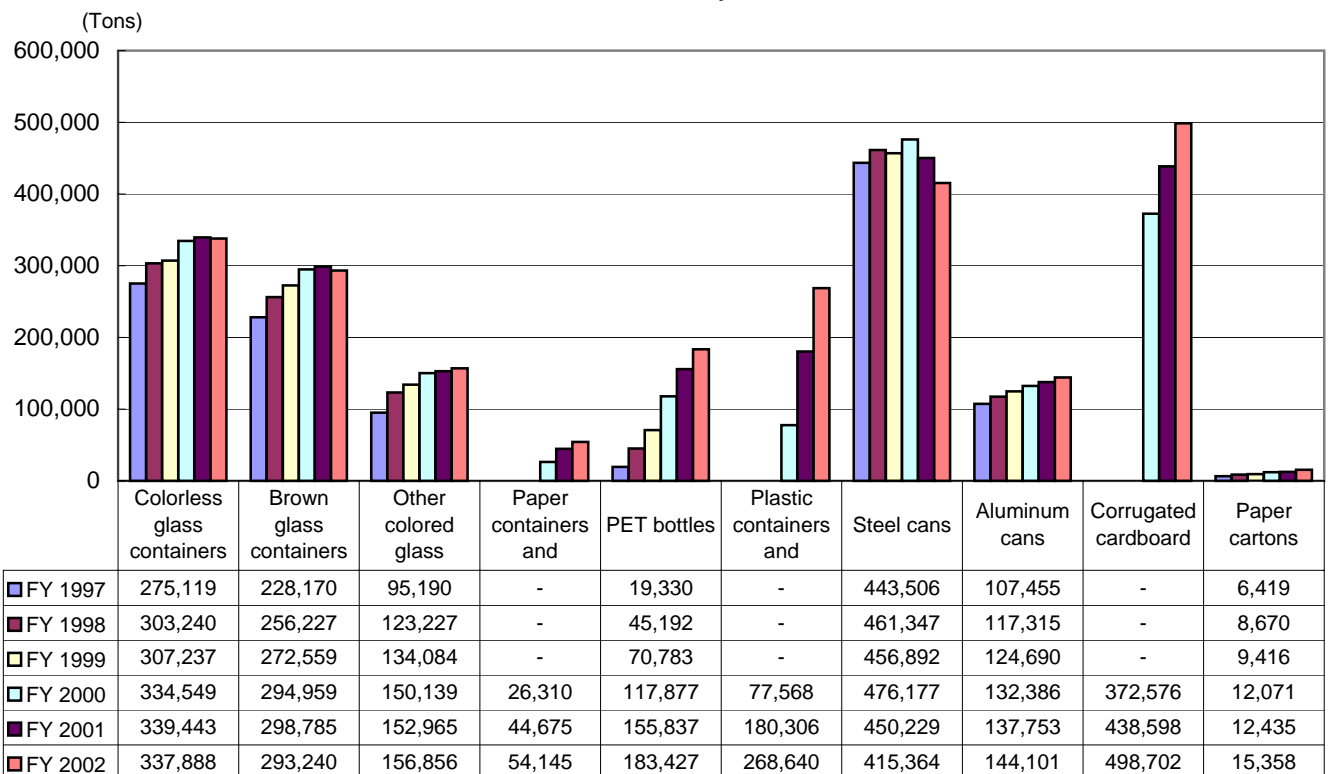


## Annual Trends in the Volume of Sorted Collection, Volume of Recycled Waste and the Number of Municipalities Conducting Sorted Collection

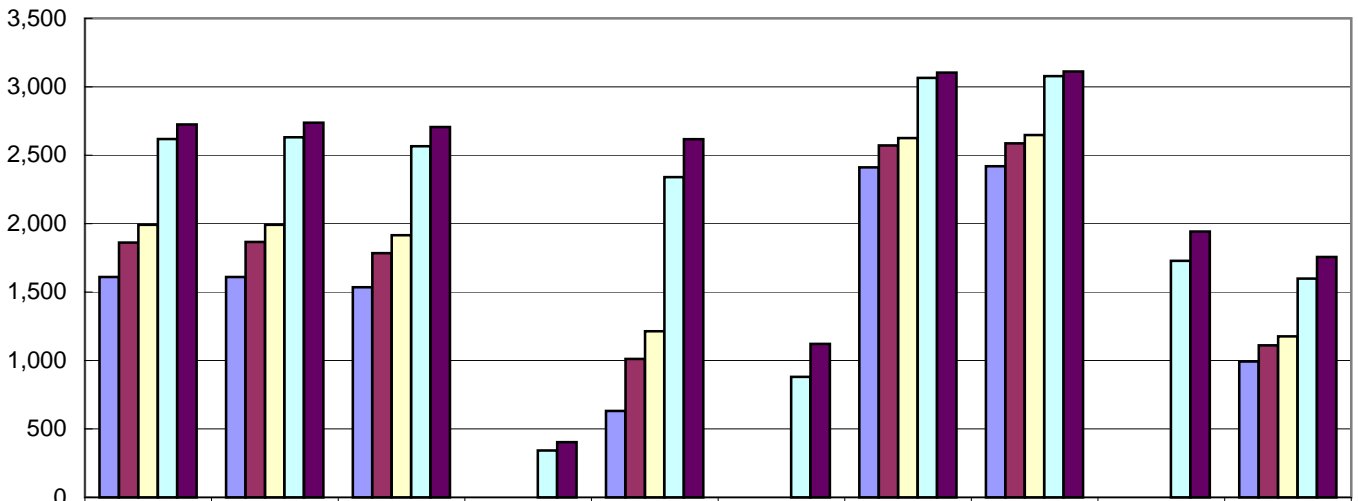
### Trends in Volume of Sorted Collection



### Trends in Volume of Recycled Waste



Trends in Number of Municipalities Conducting Sorted Collection



	Colorless glass containers	Brown glass containers	Other colored glass	Paper containers and	PET bottles	Plastic containers and	Steel cans	Aluminum cans	Corrugated cardboard	Paper cartons
FY 1997	1,610	1,610	1,535	-	631	-	2,411	2,420	-	993
FY 1998	1,862	1,866	1,784	-	1,011	-	2,572	2,587	-	1,111
FY 1999	1,991	1,992	1,915	-	1,214	-	2,625	2,647	-	1,176
FY 2000	2,618	2,631	2,566	343	2,340	881	3,065	3,078	1,728	1,599
FY 2001	2,725	2,737	2,706	404	2,617	1,121	3,104	3,112	1,942	1,756