

How to RESTORE the Rainforest ?

SITE TREATMENT

Identified Degraded Forest
Cutting Vines & Grasses

TREE PLANTING

Sourcing Seed & Wildlings
Nursery Tending
Transportation
Planting in Field
Maintenance & Monitoring



KOPEL/MESCOT Tree Planting Data 1999 - 2012	Total Tree Planted	Ha	Total Species
Discovery Channel (1999-2000)	6,250	15	11
RICOH (Japan) (2001-2003)	6,364	16	15
AAF & AF (2006-2008)	43,723	7	11
International School Brunei	10,000	1	13
American Forest 2009	51,594	5.5	13
American Forest 2010	40,000	5	12
Sabah Forest Department 2009	20,000	50	23
Sabah Forest Department 2010	40,000	100	12
Sabah Wildlife Department 2011	6240	30	7
International School Brunei	60000	15	5
Total	284171	235	23





2007

Before

After



2010

Wetland Restoration





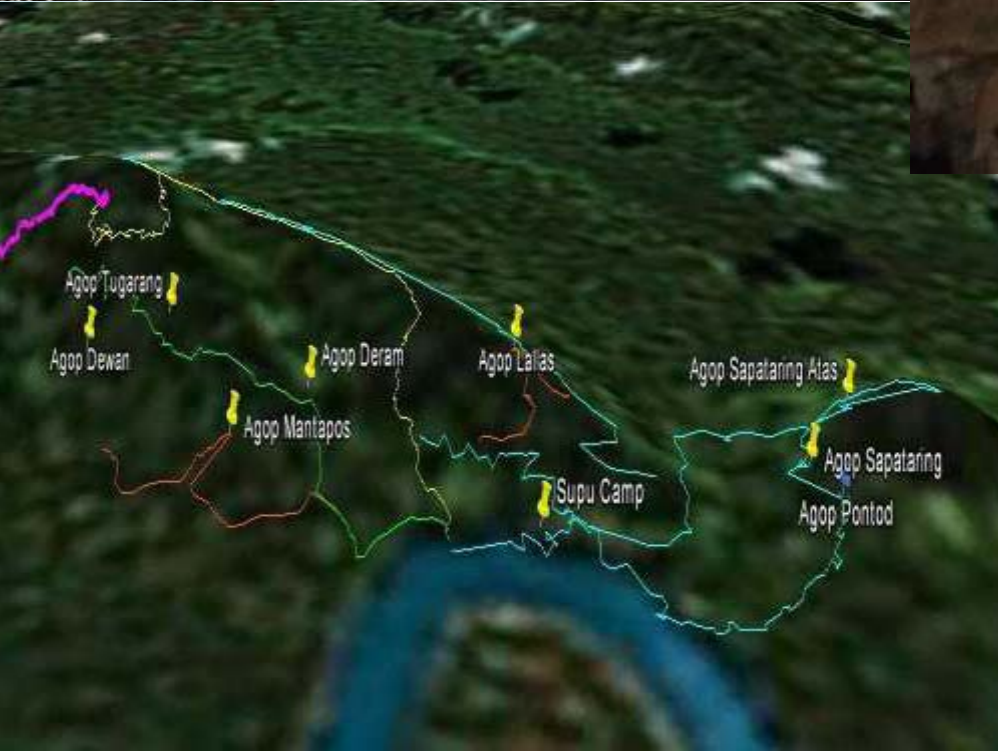


Semi Mechanical Removal





Cave Restoration – Birds Nest



Orangutan Bridge Project : Sg Pin





Local Student



Singapore Primary School

Environment Education Programme



UMS Student



International School Brunei

FORESSE A Conservation Partnership to restore
 Lot 7 of Kinabatangan Wildlife Sanctuary
 in Sabah, Malaysia
 Funded 20,000 trees
 Tree Planting Site
 NY 24,361
 E118 00,524



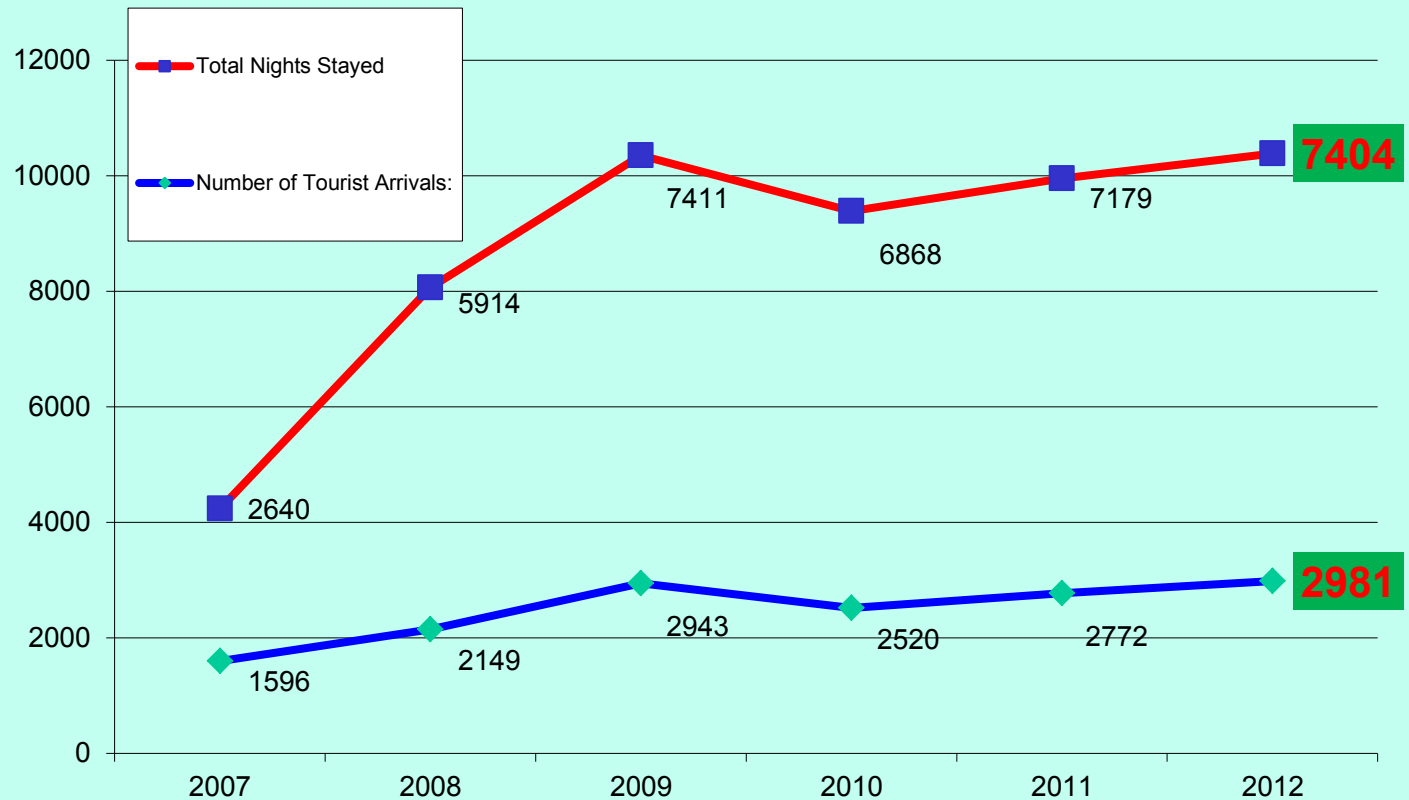
Results & Contributions...



Tourist Arrival Data & Total Night Stay

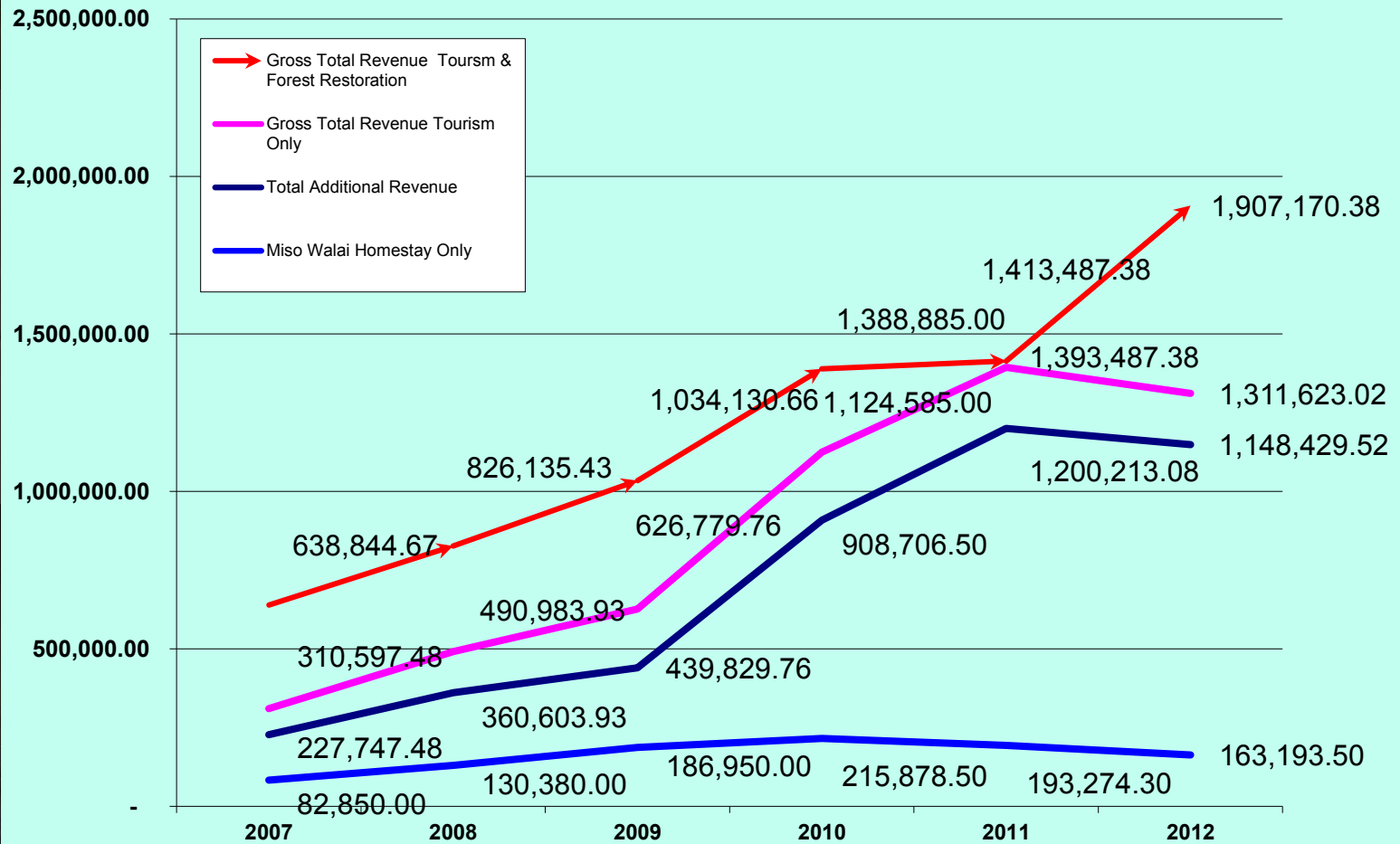


KOPEL Tourist Arrival Data



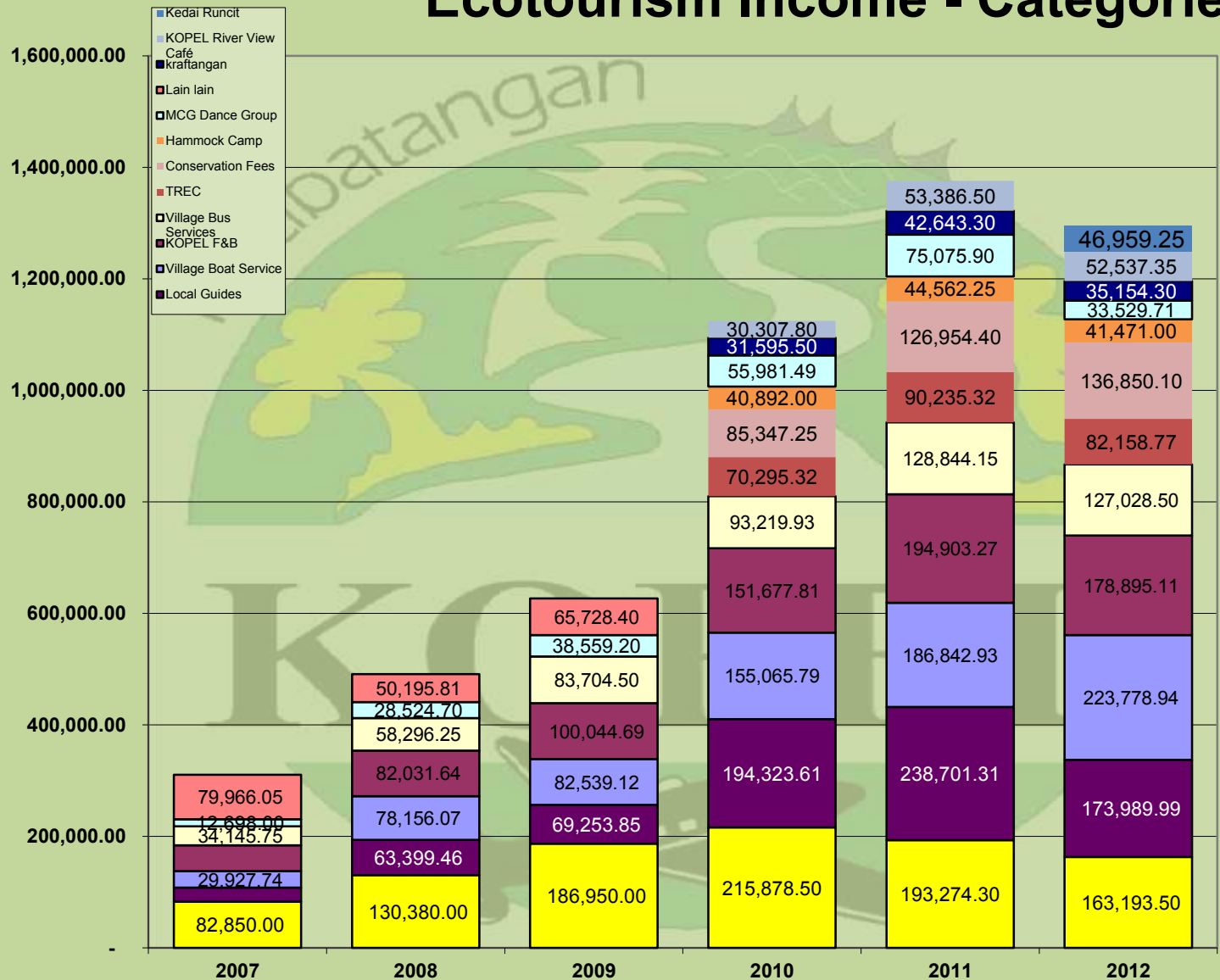


KOPEL Gross Revenue - Ecotourism

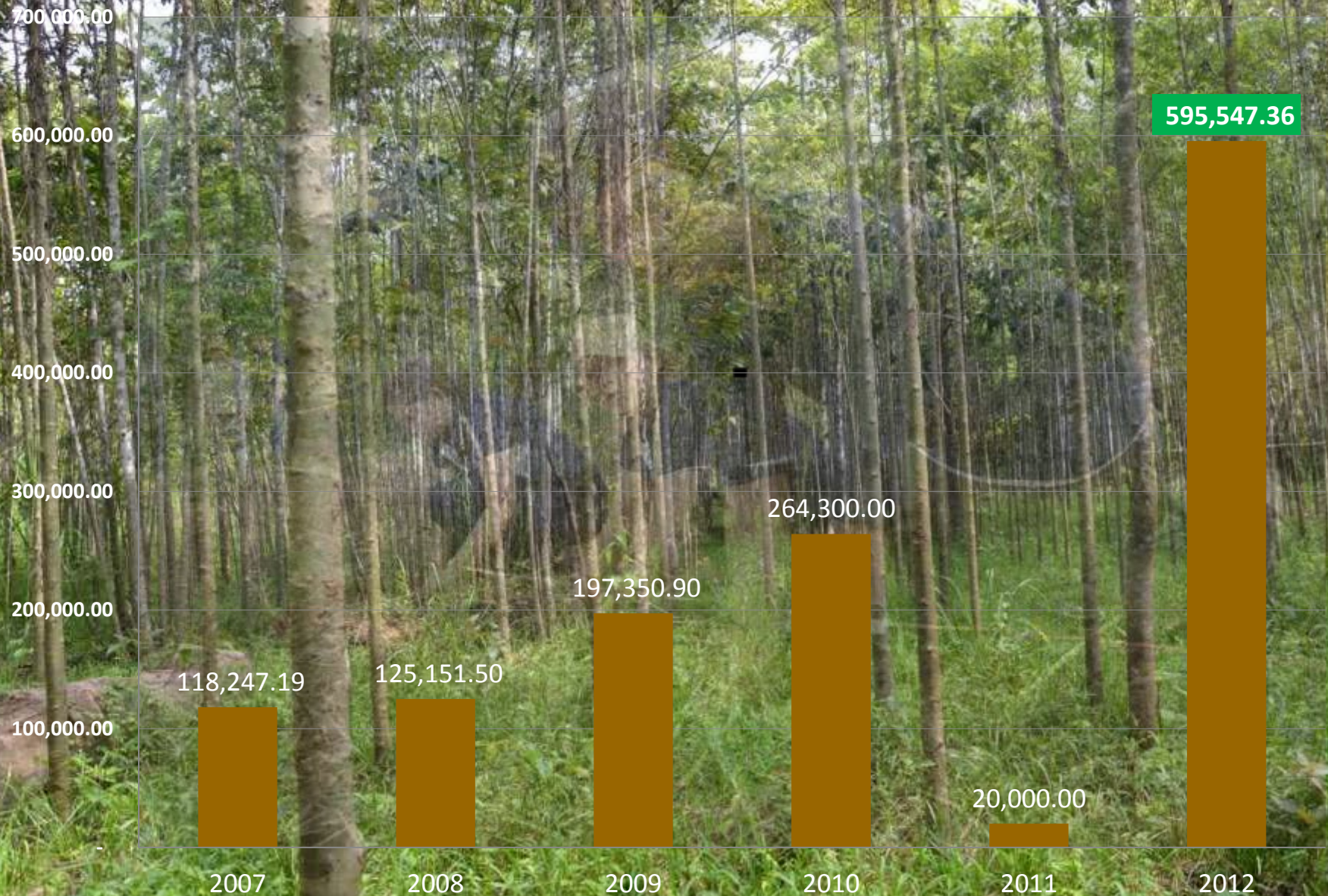




Ecotourism Income - Categories



KOPEL- Habitat Restoration Project



COMMUNITY INVOLVEMENT IN ALL ACTIVITIES – 233 Members

- ☐ **Board of Members - 9**
- ☐ **Administration Department - 10**
- ☐ **Guides - 12**
- ☐ **Forest Restoration - 40**
- ☐ **Bas Services – 8 bus**
- ☐ **Homestay 35 household**
- ☐ **Boat Services - 35**
- ☐ **Cultural Dance - 35 orang**
- ☐ **TREC – 8**
- ☐ **SREC – 4**
- ☐ **F & B – 12**
- ☐ **Laundry – 3**
- ☐ **Handicraft Shop – 2**
- ☐ **Landscaping – 4**
- ☐ **MESCOT Nursery – 4**
- ☐ **Lake Restoration – 4**
- ☐ **Supu Cave Conservation – 8**

Year	Recognitions / Awards
2002	Winner of Sabah Level - Village Idea Competition organized by INFRA
2003	<ul style="list-style-type: none"> ▪ Winner of Sabah “ Gerakan Daya Wawasan” ▪ Winner of National Level “ Gerakan Daya Wawasan”
2004	Selected as Best 20 CBT Projects UNDP Equator Prize
2005	Finalist of National Level “Gerakan Daya Wawasan”
2007	The Best Cooperative in Sabah (Tourism Sector)
2008	2 nd Place SDSI National Level (Homestay)
2009	<ul style="list-style-type: none"> ▪ Sabah Tourism Award – Best Homestay ▪ “TOP 10” out of 168 Countries in GVI Volunteer Program ▪ Finalist Sabah Environment Awards
2011	• National Cooperatives Awards (Tourism Services)
2012	<p>1. Malaysia Tourism Award (Special Awards) Best Contribution To Malaysia’s Rural Economy</p> <p>2. UNDP Equator Prize- Equator Initiative Case Study Local sustainable development solutions for people, nature and resilient communities.</p>
2013	National Cooperatives Awards (Tourism Services)



Partnership & Collaboration...



Who is Involved?

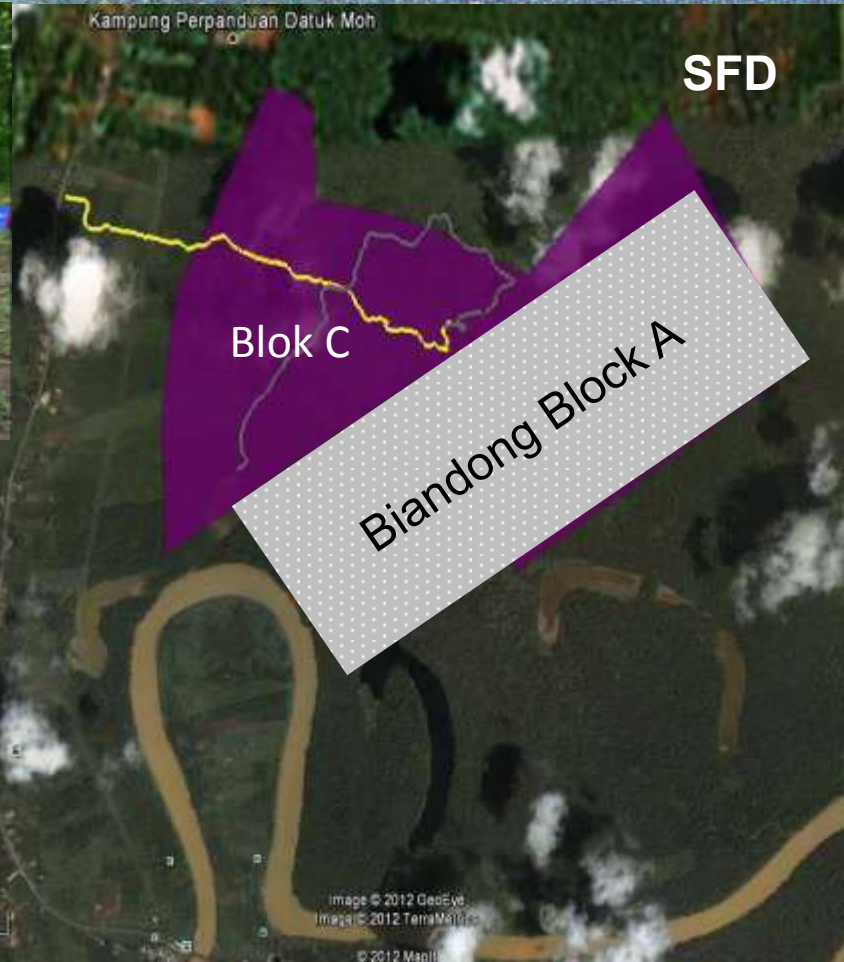




Forest Restoration Project

Contract from ;

1. Sabah Forestry Department
2. Sabah Wildlife Department



Tungog Rain Forest Eco Camp (TREC)



- Critical mechanism to self-generate income for forest habitat restoration and KOPEL/MESCOT conservation efforts.
- Eco-Camp for 20 guests stay in forest, learn to minimize their footprint & impact on the surrounding forest through eco-sensitive technology.
- It has been completed with funds from ARCUS Foundation, AAF, and Shell Malaysia and launched in November 2009.
- The development of the eco-camp stands out as an innovation developed against the odds and in spite of numerous setbacks. It was critical to the long term sustainability of the programme.



Supu Adventure Camp



Sabah Ministry of Tourism & Federal Ministry of Tourism

- ❖ Legitimised and recognised homestay programme
- ❖ Inspection of homestay
- ❖ Steering Committee for Sabah State
- ❖ Recognition & Awards





Partnership:

Partnerships	International NGO: LEAP, Alexander Abraham Foundation, American Forests, ARCUS Foundation, Envision (Japan).
	Local NGO: LEAP, Sabah Homestay Association
	International Corporate: Intrepid Adventure Tours, Exodus Tours, Raleigh International, Explore Worldwide Tours, Geckos Adventures (subsidiary of Peregrine Tours), Global Vision International (GVI), JISCO Travel Co (Japan), Shell Malaysia S/B, International Nature and Outdoor Activities College (Japan), Ngee Ann Polytechnic (Singapore).
	Local Company: Asia Ability S/B, Field skills Expedition Services, TYK Adventures, Borneo Eco Tours, Borneo Passages, Yongo Travel, North Borneo Safari.

Sharing Knowledge With Other Communities ...



- ❑ Coomunity Abai Project (CAPS), Kinabatangan
- ❑ Sinagang Community (Crocer Range)
- ❑ Third Country Training (Study Case)
- ❑ Penan Community, Ulu Baram, Sarawak
- ❑ Women Empowerment Pitas
- ❑ Bukit Kuda Community, Labuan

Biodiversity Conservation Through Community-Based Rural Development In Lower Kinabatangan

Rakonu Gakuen University, JICA Partnership Program& KOPEL Berhad



Monitoring Unit

wildlife, water quality, forests



Data Base Unit

wildlife, water quality, forests, land use, Mapping, social condition (location of houses, water source etc.)

Environment Education Unit

Develop experience and understanding about wildlife, flora and fauna to community, buletin, pamphlet and etc.



Capacity Building

For guides, homestay families, and all KOPEL department

Product Development Unit

Handycraft, organic fertilizer, small scale organic farming and etc

Conclusion

Building strong partnership with key stakeholder are essential in moving up KOPEL along the value chain

Partnership will pave way for KOPEL to improve quality of the Community Base Ecotourism programme through better product development, systematic operation, competitive business model, superior service quality and targeted marketing strategies.



www.mescot.org



Terimakasih....