

Measuring Protected Area Coverage in Asia

Dr Naomi Kingston

Head of Protected Areas Programme, UNEP-WCMC



World Database on Protected Areas

Joint product of UNEP & IUCN

- Maintained by UNEP-WCMC



Dates back to 1962 UN List of National Parks and Equivalent Reserves



Subsequent mandates from CBD & IUCN



Incorporates IUCN protected areas management and governance categories

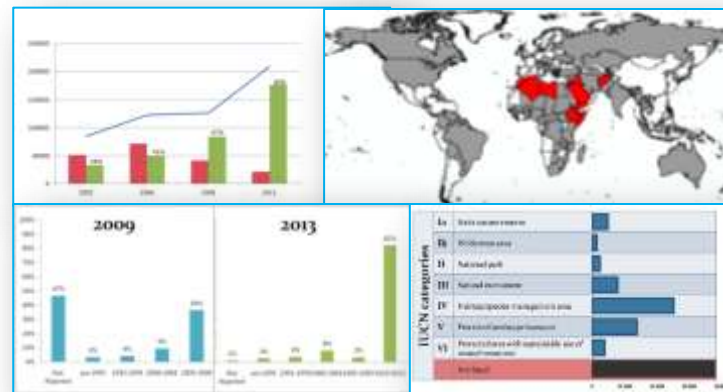




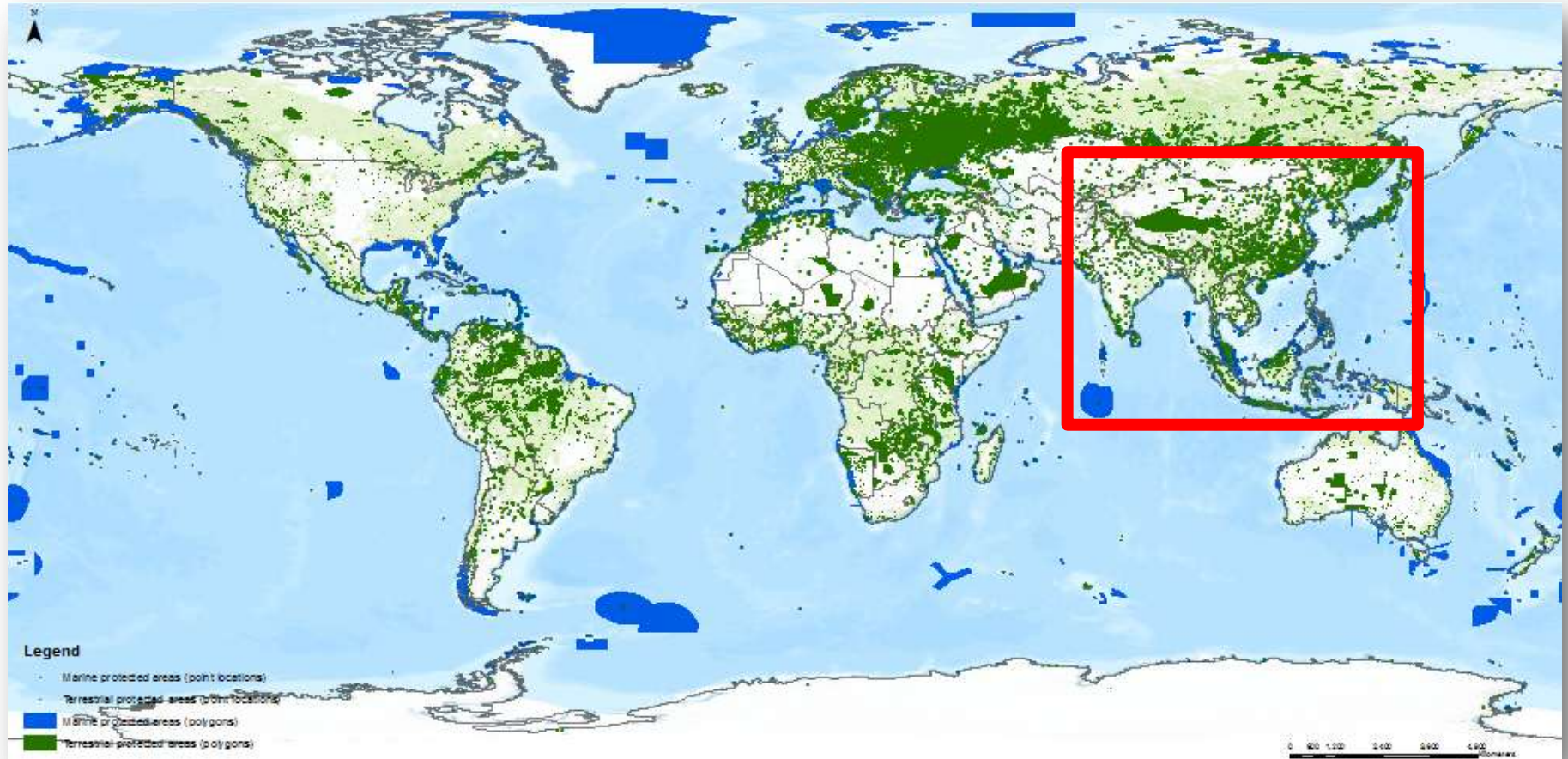
14.6% land; 2.8% marine



For more information on WDPA:
Working Group 6: Biodiversity & Protected Areas
15th November, 12:45

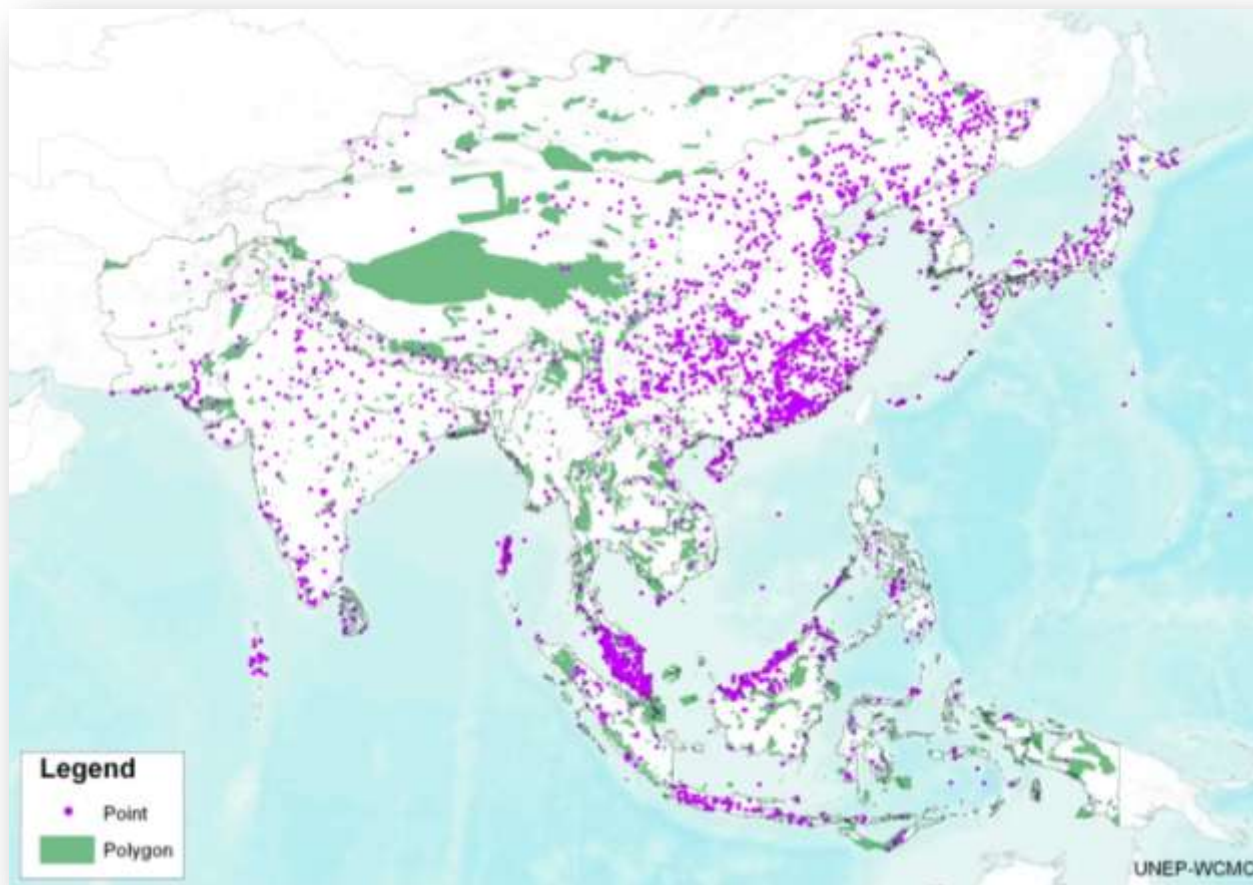


WDPA Oct. '13: 193,583 records



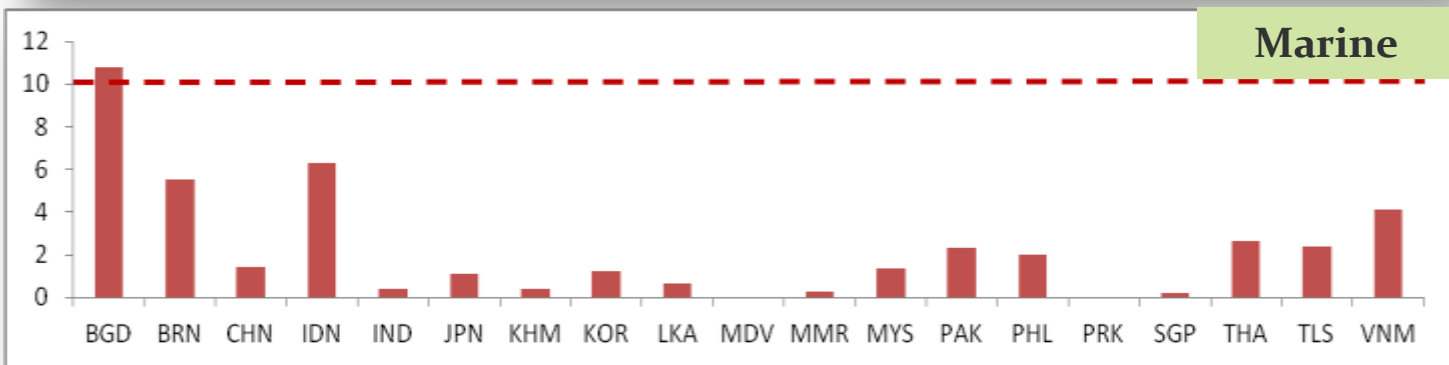
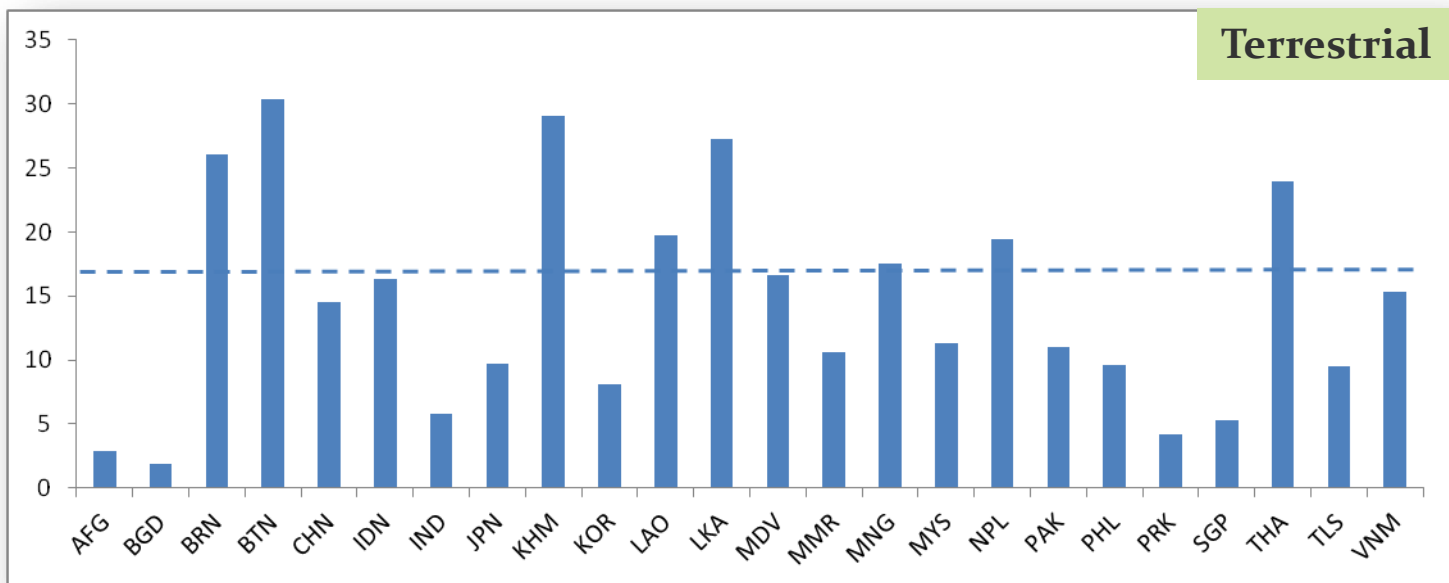
14.6% land; 2.8% marine

WDPA Oct. '13: 7,043 records



13.2% land; 2.8% marine

Percentage coverage by country



Protected Planet Asia report

- Review the status of protected areas in the Asia region
- Assess Asia's progress towards the achievement of protected area targets of the Convention on Biological Diversity (CBD)
- Review of protected area issues of particular relevance to the region



Analysis using World Database on Protected Areas and other relevant datasets

For launch at World Parks Congress



IUCN
WORLD PARKS
CONGRESS
SYDNEY 2014

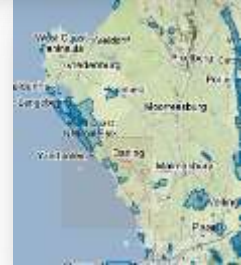
Protected Planet Asia report

Side event 11:15 on 15th November -
Meeting Room 1

Challenge to you:

- update you protected areas data with the WDPA by May 2014
- complete all the information fields
- let us know about any assessments of management effectiveness or biodiversity monitoring





Thank you!

naomi.kingston@unep-wcmc.org

Hear more!

Side event on Protected Planet Asia Report

11:15 on 15th November - Meeting Room 1

**Presentation on the World Database on
Protected Areas (WDPA)**

12:45 on 15th November - Working Group 6