



Alpine Meadow & Grass Land



GPP
(0.507)

NPP
(0.353)

NEP
(0.061)

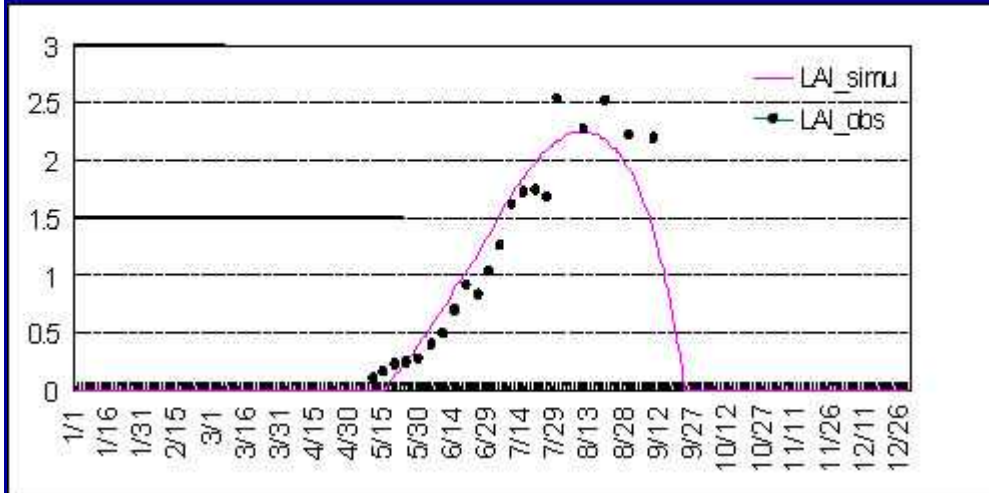
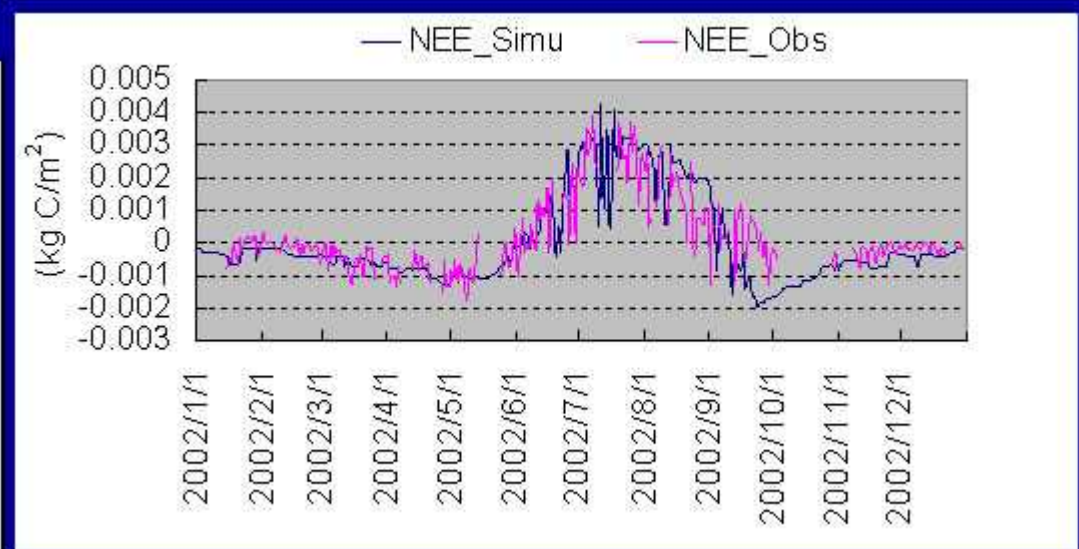
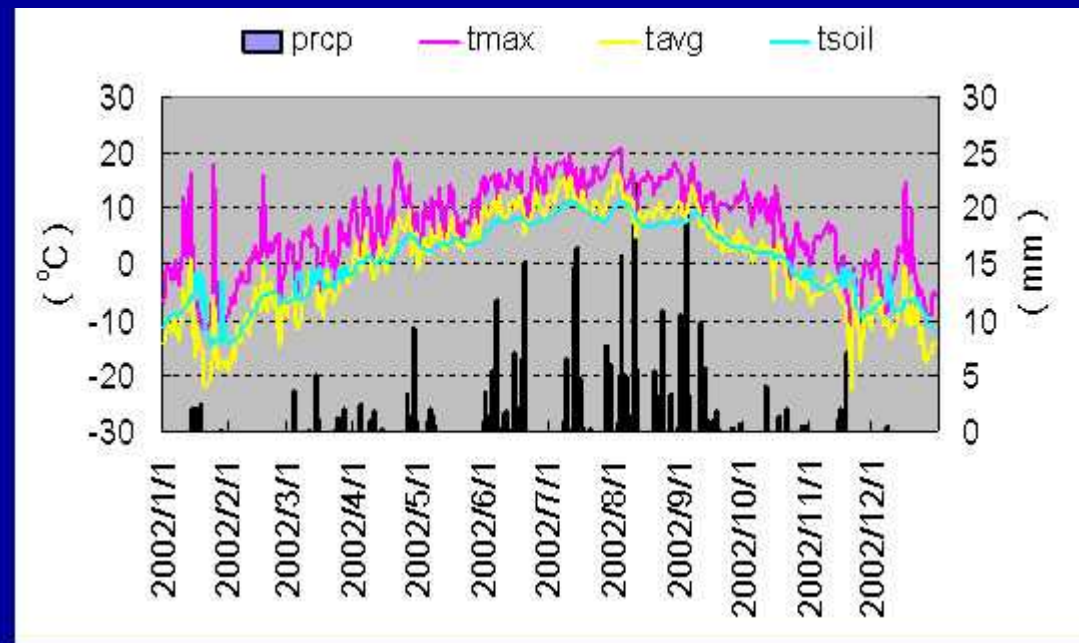
(kg C/m²/yr)



Rm
(0.049)

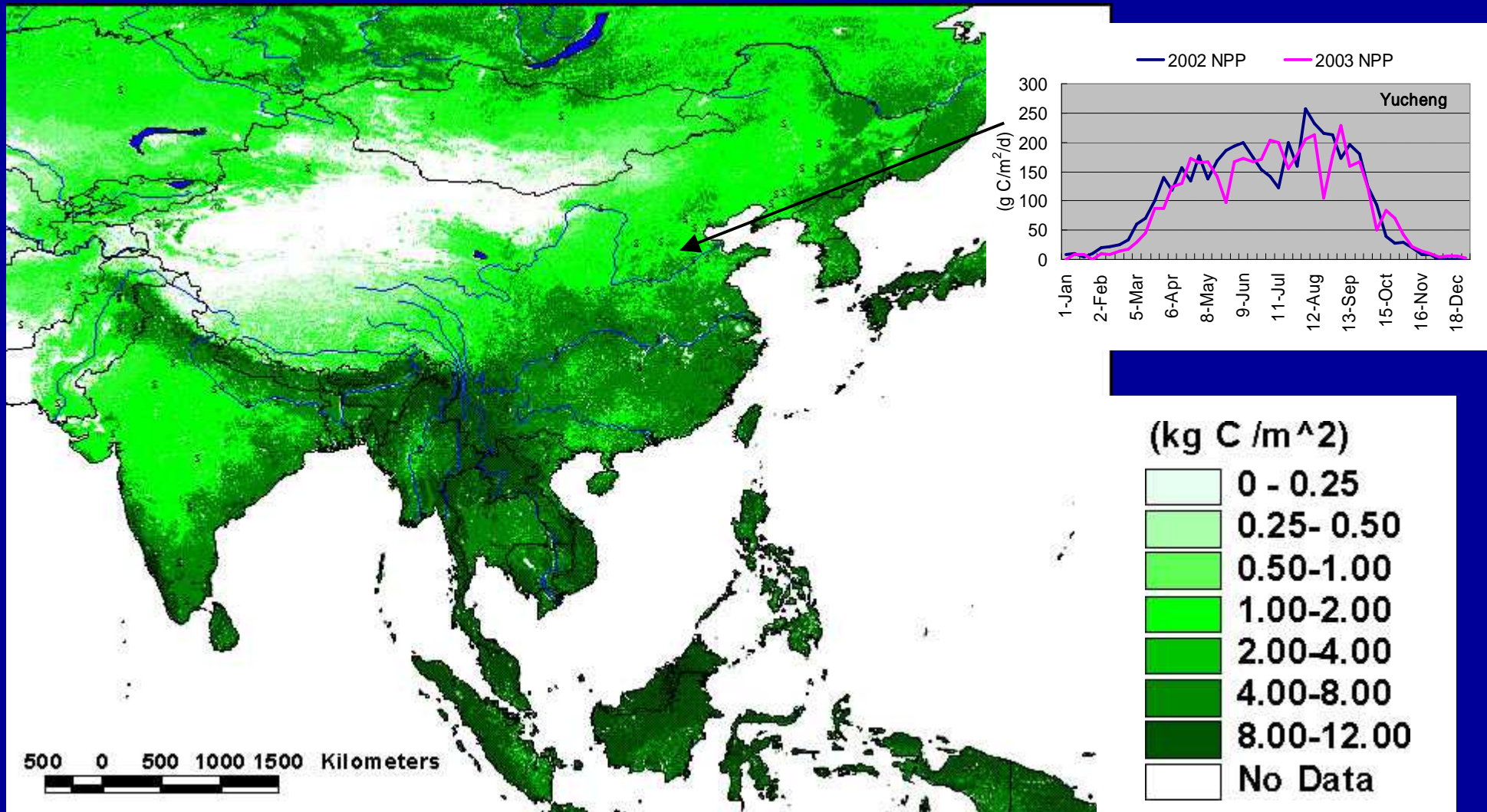
Rg
(0.106)

Rh
(0.292)



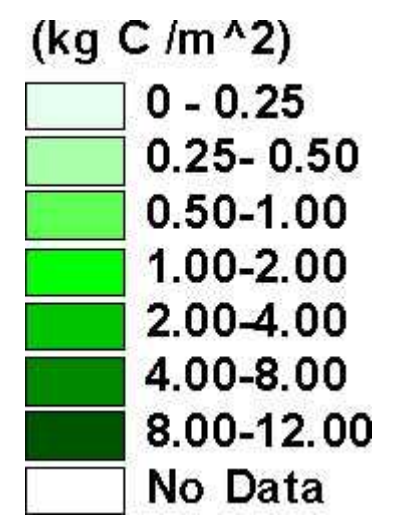
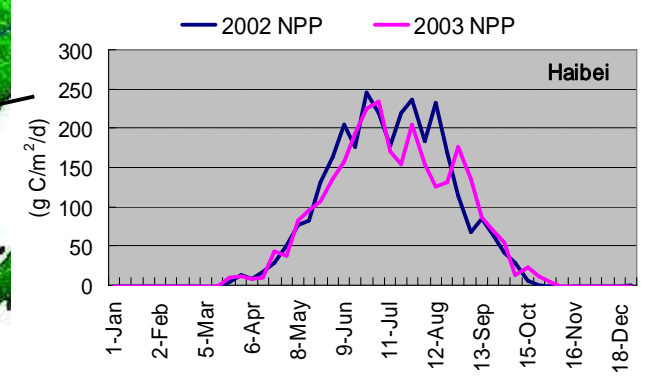
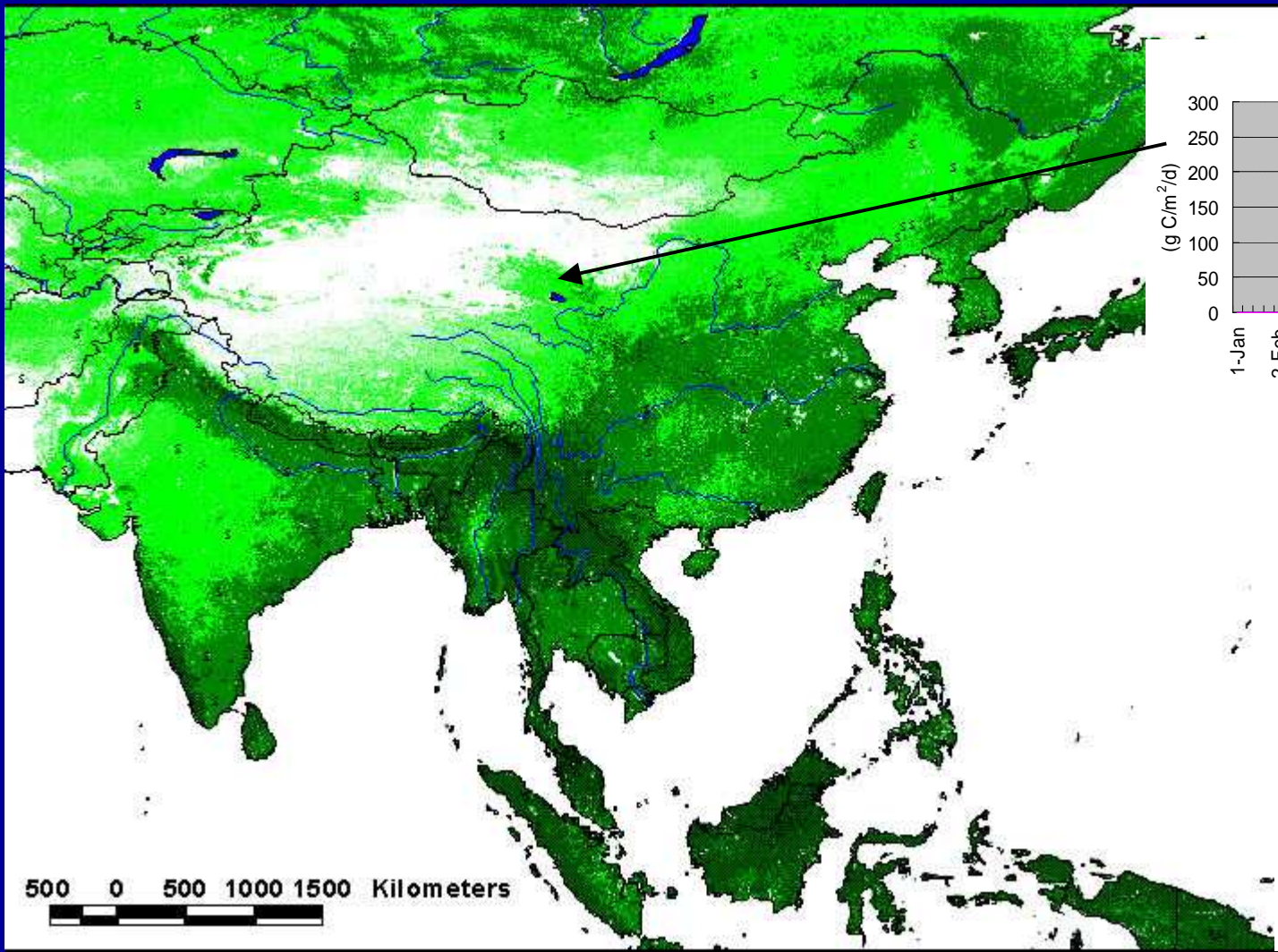


Carbon Fixation by Vegetation in Asia-Pacific Region Derived from MODIS Data in 2001

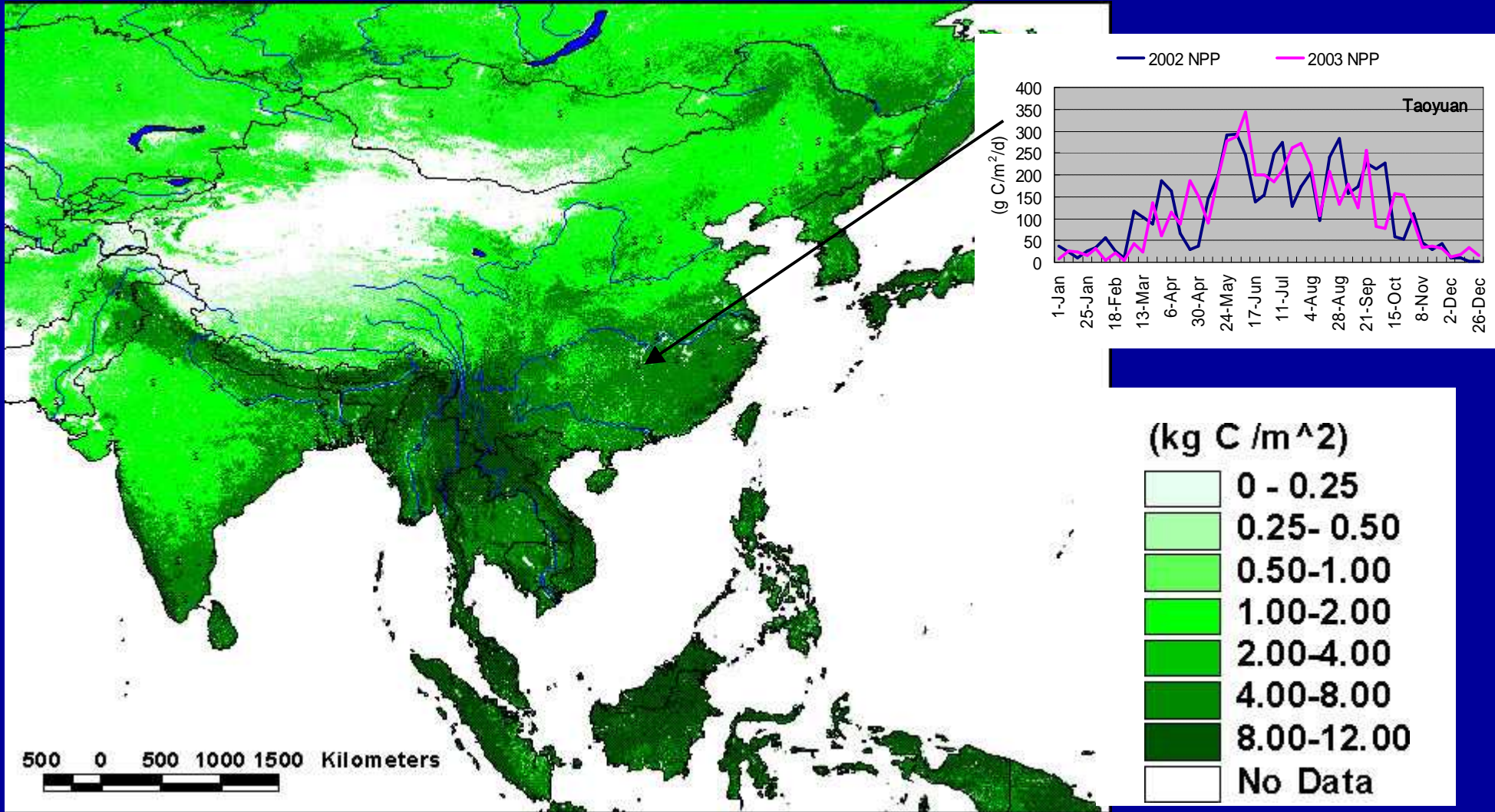




Carbon Fixation by Vegetation in Asia-Pacific Region Derived from MODIS Data in 2002



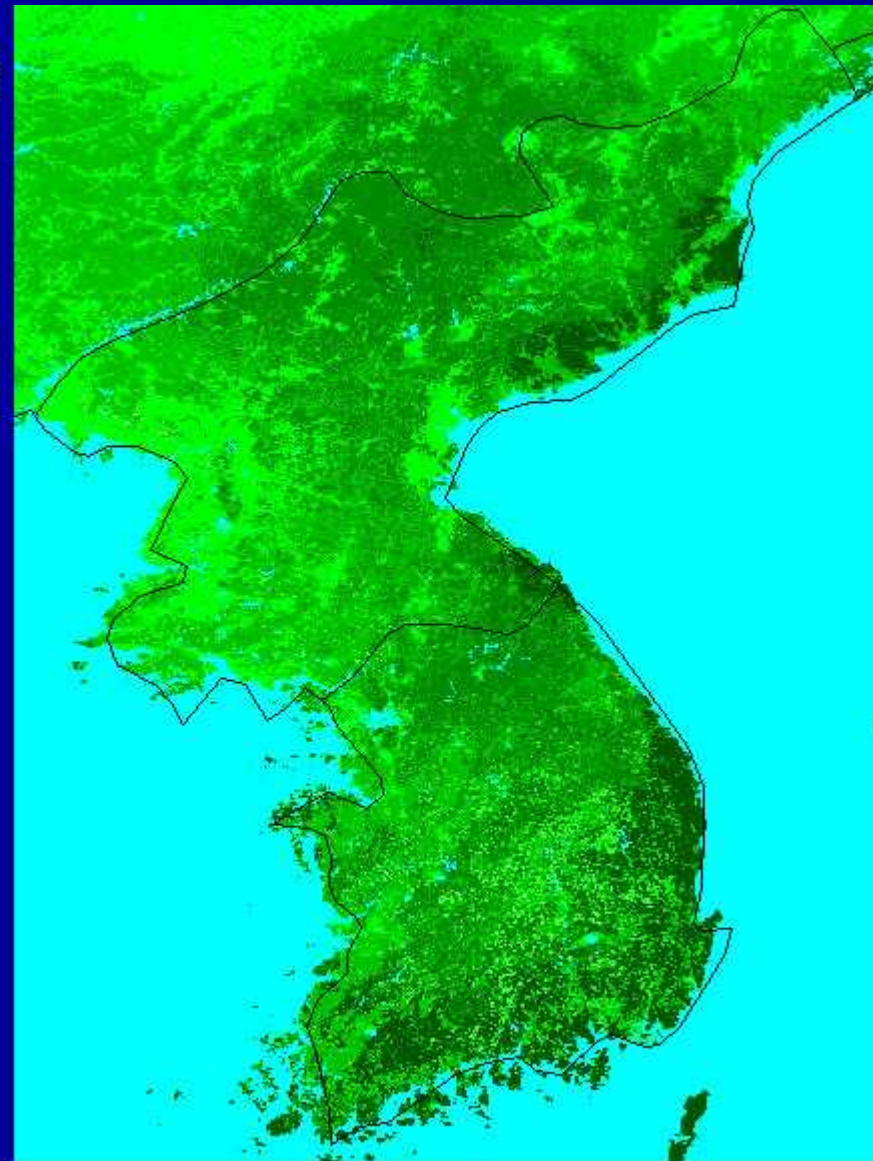
Carbon Fixation by Vegetation in Asia-Pacific Region Derived from MODIS Data in 2003



NPP estimated by Biome-BGC using MODIS Data

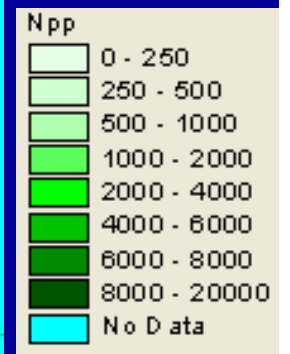


2002

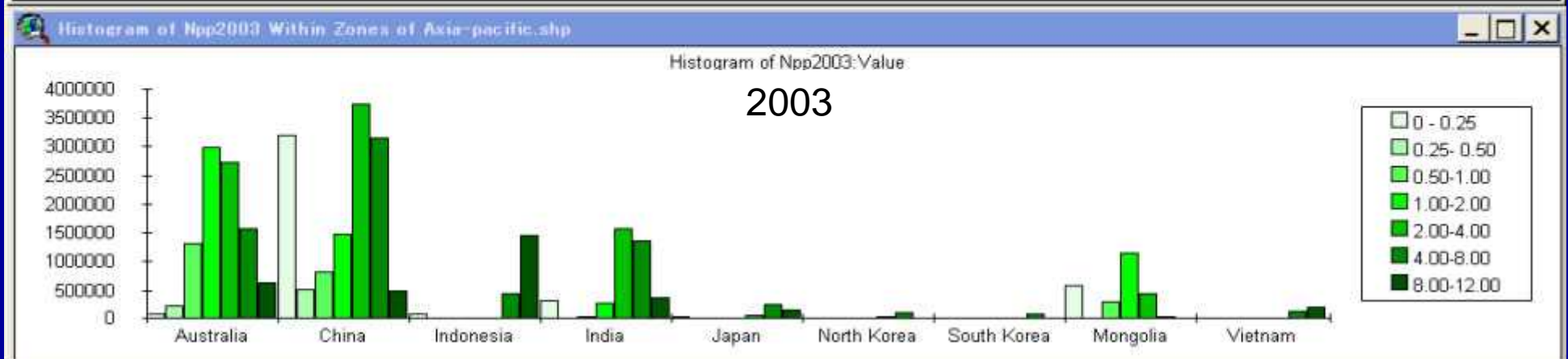
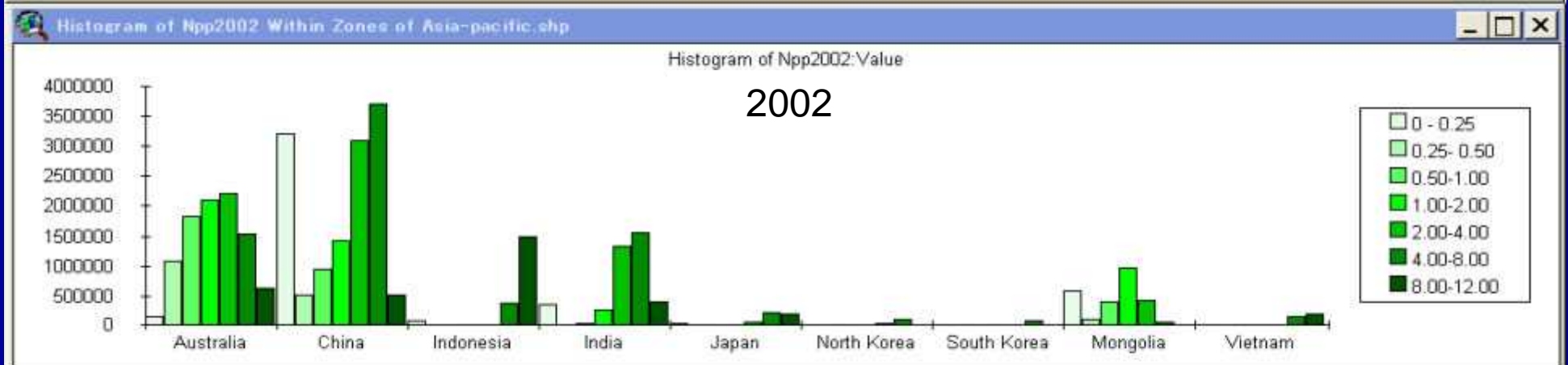


2003

South is really better than North?



Changes of Carbon Fixation by Vegetation in Different Countries



**APEIS 3rd Integrated Environmental Monitoring (IEM) Workshop,
9 - 11 December 2004, Singapore**

Countries participated:

**Australia, Singapore, China, Russia,
India, Mongolia, Vietnam**

Report Groups:

MODIS Network and its Applications:	10 reports
FLUX Network Research Activities :	6 reports
Integration of Satellite-based and Ground-based Systems:	8 reports



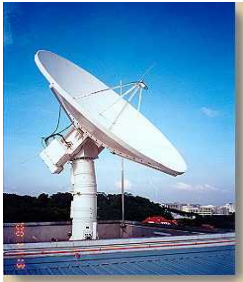
Recent Australian Developments in MODIS and Other Activities for Integrated Environmental Monitoring

Reported by

DLB Jupp , CSIRO Earth
Observation Centre

- Flux network linking with MODIS data
- Thermal and Vegetation Index data being used for advanced modelling
- Scaling up from Flux station to continent is a prime objective

Recent Developments in CRISP MODIS Processing Facility for Integrated Environmental Monitoring of the Southeast Asia Region



Reported by S. C. LIEW
Centre for Remote Imaging, Sensing and Processing
National University of Singapore

- Higher level data processing
 - Setup LINUX workstations to run Standalone NASA Institutional Algorithms
 - Automatic processing from level 0 to level 2
 - Almost all standard products can be generated
- Development of a prototype web-based Regional Environmental Information System
- Near real-time products
 - Fire hotspots email alert
 - Disaster
- Research activities
 - Validating MODIS hotspots using high resolution SPOT images

Tsunami Disaster - Aceh, Sumatra, Indonesia



Imaging date : 13 Jan 2003



Imaging date : 29 Dec 2004

Tsunami Disaster - Aceh, Sumatra, Indonesia



Imaging date : 13 Jan 2003



Imaging date : 29 Dec 2004

Tsunami Disaster - Aceh, Sumatra, Indonesia



Imaging date : 13 Jan 2003



Imaging date : 29 Dec 2004

Media Reports of APEIS

- [中国生態観測ネットワーク](#)
- [APEIS Capacity Building Workshop on Integrated Environmental ...
www.word-craft.net/nies/english/products/1st_Beijing/](#)
- [中日合作监测研究黄河流域地下水动态变化
http://www.enviroinfo.org.cn/Ecological_Construction/Government_Action/Program_and_Project/f101617.htm](#)
- ["亚太地区环境创新战略"项目科学协调委员会第3次会议](#)
- [www.igsnrr.ac.cn/content.jsp?tablename=zhxw&id=1130](#)
- [西高所科研人员赴新加坡参加"亚太地区环境创新战略计划\(APEIS\)"项目年度学术研讨会
159.226.155.129/news/20041230.htm](#)
- [中国環境と開発国際委員会\(China Council for International Cooperation on Environment and Development\)への貢献](#)
- [生态系统与人类福利:
pdf.wri.org/ehw_chinese.pdf](#)
- [长江流域水资源保护局](#)
- [www.ywrrp.gov.cn/shownews.asp?NewsID=115](#)
- [长江中游无论对生物多样性、生态环境保护,还是国家安全和经济发展都具有极为重要...](#)
- [www.wwfchina.org/dshy/hsbc/HSBC1-3.htm](#)

Media Reports of APEIS

- [政府公报文章页](#)
- [www.xinjiang.gov.cn/1\\$001/1\\$001\\$017/40.jsp?articleid=2004-4-6-0062](http://www.xinjiang.gov.cn/1$001/1$001$017/40.jsp?articleid=2004-4-6-0062)
- [新疆维吾尔自治区人民政府向日本专家颁发“ ...](#)
www.cas.cn/html/Dir/2003/09/28/1878.htm - 21k -
- [新華社新聞](#)
- www.xj.xinhua.org/xw/2003-09/27/content_995013.htm
- [中国科技信息-科学人物2003年度中国天山...](#)
http://www.chinainfo.gov.cn/data/200312/1_20031226_71551.html
- [科报网-科技日报-文章内容](#)
http://www.stdaily.com/big5/stdaily/2003-12/25/content_192424.htm
- [人民網—科學人物:2003年度中國天山獎得主渡邊正孝教授](#)
- www.people.com.cn/BIG5/keji/1059/2264559.html

Research Plan for APEIS-II

Development of Integrated Environmental Monitoring

- MODIS Receiving Station
- Ground truth Stations
- Data Process System for higher-order products
- Data base (population, energy, water resources, natural resources, etc)

MODIS Data Sharing

- Through Internet:

<http://www-basin.nies.go.jp/english/project/iem/index.html>

- Establishment of MODIS Data Exchange Network with NASA and APEIS-IEM member countries.

Prediction of Environmental Resources for Sustainability in Asia