

Rice

Changes in Inspection Results for Rice (Incl. Inspection of All Rice Bags)

inspection period	Number of samples ¹	Number of samples exceeding the standard limit	Percentage of samples exceeding the standard limit
Harvested in ~2011	26,464	592	2.2%
Harvested in 2012	Approx. 10.37 million	84	0.0008%
Harvested in 2013	Approx. 11.04 million	28	0.0003%
Harvested in 2014	Approx. 11.02 million	2	0.00002%
§	§	0	0%
Harvested in 2023 (As of January 9)	Approx. 0.08 million	0	0%

1: For rice harvested in FY2020 onward, inspection of all rice bags has been replaced with random monitoring by stages, and the number of samples decreased.

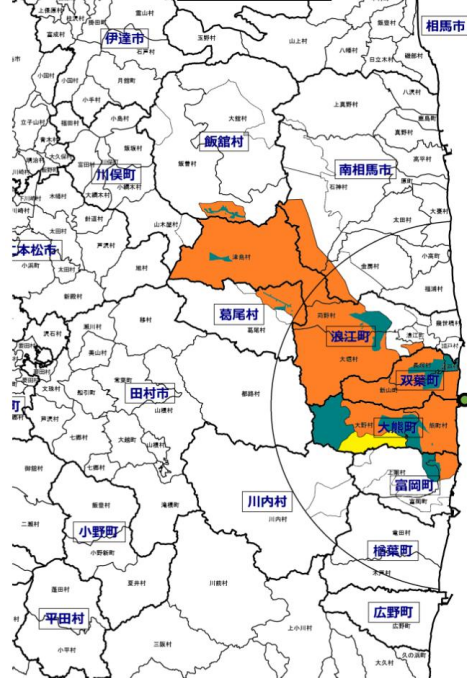
* Coverage: 17 prefectures including the Tokyo Metropolis designated as inspection targets in the "Concepts of Inspection Planning and Establishment and Cancellation of Items and Areas to which Restriction of Distribution and/or Consumption of Foods Concerned Applies," which compiles basic approaches concerning radioactive materials in foods

Prepared based on the "Inspection Results Concerning Radioactive Cesium Concentrations in Agricultural Products" by the Ministry of Agriculture, Forestry and Fisheries and the "Information about the Food Test" by the Fukushima Association for Securing Safety of Agricultural Products

Rice

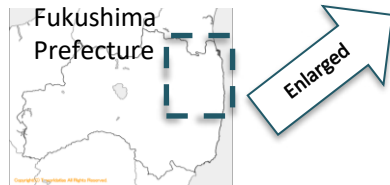
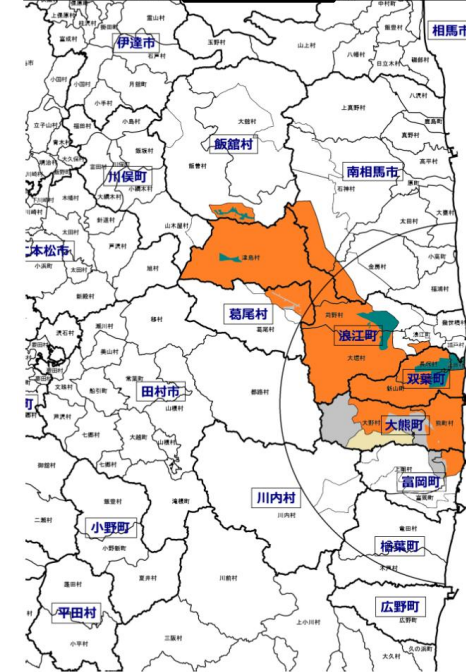
Areas Subject to Planting Restrictions for Rice to be Harvested in 2023

Rice harvested in 2022



- **Planting restrictions**
Planting and farming are not permitted.
- **Agricultural land conservation / Test growing**
Agricultural land conservation after decontamination and test growing under the management of a municipality is conducted.
- **Preparation for resuming planting**
After formulating a management plan, demonstration for resuming planting is conducted based thereon.
- **Inspection and management of all rice harvested**
After formulating a management plan, measures to inhibit radiation absorption are taken based thereon at all farmland. Harvested rice is all inspected (management of all harvested rice and inspection of all rice bags) and rice passing the inspection is shipped sequentially.
- **Inspection and management of all farm households**
Measures to inhibit radioactive cesium absorption are taken thoroughly by each farm household, and after inspection (inspection of all rice bags), rice is shipped sequentially.
- Fukushima Daichi NPS

Rice harvested in 2023



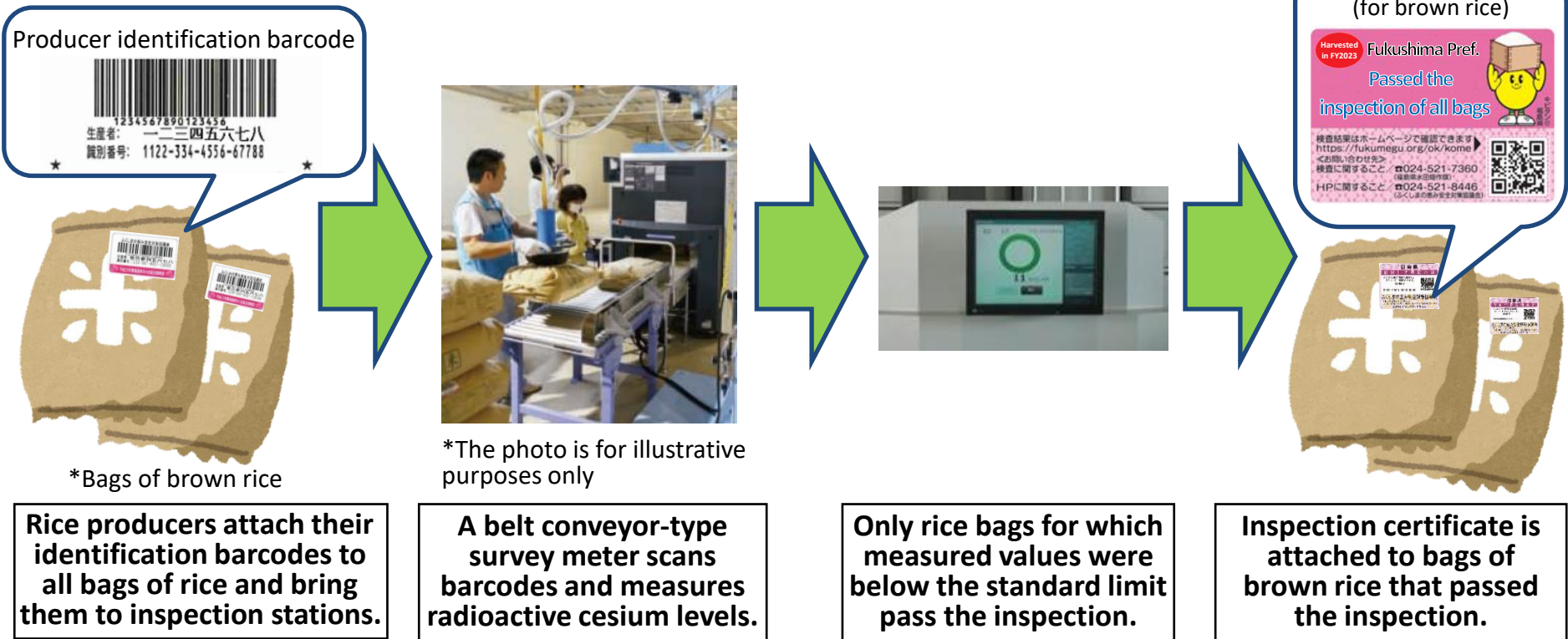
Area	Rice harvested in 2023	Rice harvested in 2022
Planting restriction	1,500ha	1,500ha
Agricultural land conservation / Test growing	550ha	850ha
Preparation for resuming planting	300ha	0ha
Inspection and management of all rice harvested	0ha	100ha
Total	2,350ha	2,450ha

*The total amounts do not necessarily match due to rounding

Rice

Radioactivity Inspection of All Rice Bags by Fukushima Prefecture

Fukushima Prefecture has been inspecting all bags of rice harvested throughout the prefecture since 2012, apart from inspections based on the inspection guideline. For rice harvested in FY2020 onward, inspection of all rice bags has been replaced with random monitoring by stages. From rice harvested in FY2023, Tamura City started to adopt random monitoring.



*Prepared based on the website of the Fukushima Prefectural Government

Radioactivity Inspection results can be checked using QR® (quick response) codes.
"Fukushima Association for Securing Safety of Agricultural Products"
https://fukumegu.org/ok/contentsV2/kome_summary_2.html (in Japanese)