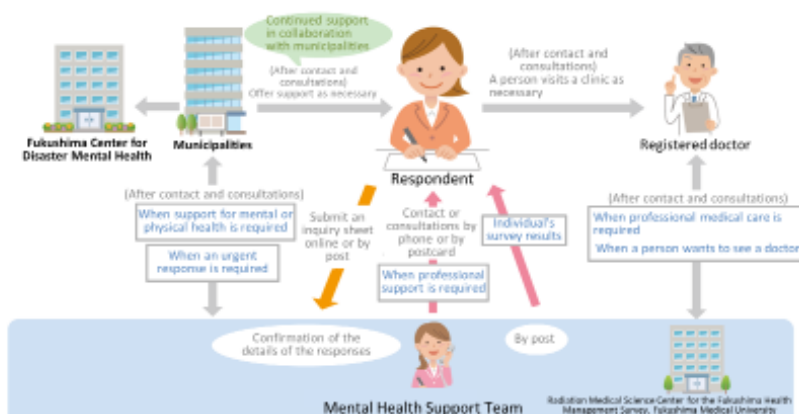


- Procedures from submission of an inquiry sheet to receipt of support -
Relevant organizations and doctors are collaboratively offering care.



* For people who are considered to require continued support, care is provided in collaboration with regional registered doctors and municipalities, etc.

* Survey results are sent individually from FY2014.

* Registered doctors: Psychiatrists and pediatricians, etc., who have received lectures concerning disaster mental health and radiation medical science:
As of July 1, 2022, there are 121 registered doctors in 78 medical institutions.

Number of people who received support by phone

	Children	Adults
FY2011	1,180	6,310
FY2012	623	5,991
FY2013	473	3,913
FY2014	327	3,053
FY2015	250	2,567
FY2016	181	2,382
FY2017	210	2,410
FY2018	167	2,404
FY2019	143	2,117
FY2020	117	2,213

Number of people who received support in writing

	Children	Adults
FY2011	1,066	10,898
FY2012	800	10,168
FY2013	752	7,664
FY2014	517	6,244
FY2015	435	6,075
FY2016	336	6,098
FY2017	375	5,545
FY2018	297	4,994
FY2019	314	4,408
FY2020	253	4,716

Prepared based on the materials for the 11th, 15th, 19th, 22nd, 26th, 27th, 31st, 32nd, 35th, 38th, 39th, 42nd and 45th
Prefectural Oversight Committee Meetings for Fukushima Health Management Survey

Analysis results and advice based thereon are individually sent to people who have submitted inquiry sheets. For respondents who are considered to require professional support as a result of analyzing their responses, clinical psychotherapists, public health nurses, or clinical nurses, etc. make a phone call to offer support concerning problems with their mental health and lifestyles. If necessary, brochures containing health-related information and contacts for consultation services are provided by mail.

Remarks by people who have received support by phone include, "I am glad that I can confess what I cannot say to my family," or, "I am relieved to know that I can call this number to make consultations whenever I feel depressed."

Regarding those in need of continued support or professional medical care, support is offered in collaboration with municipalities, the Fukushima Center for Disaster Mental Health and registered doctors who can provide professional advice.

Included in this reference material on March 31, 2013

Updated on March 31, 2023