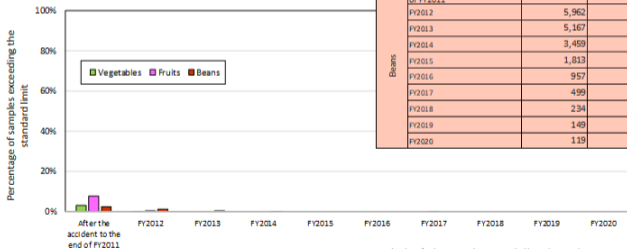


Changes in Inspection Results for Vegetables,
Fruits and Beans

	Inspection period	Number of samples	Number of samples exceeding the standard limit	Percentage of samples exceeding the standard limit
Vegetables	After the accident to the end of FY2011	12,671	385	3.0%
	FY2012	18,570	5	0.03%
	FY2013	19,657	0	0%
	FY2014	16,712	0	0%
	FY2015	12,205	0	0%
	FY2016	10,810	0	0%
	FY2017	8,275	0	0%
	FY2018	6,728	0	0%
	FY2019	5,349	0	0%
	FY2020	4,199	0	0%

	Inspection period	Number of samples	Number of samples exceeding the standard limit	Percentage of samples exceeding the standard limit
Fruits	After the accident to the end of FY2011	2,732	210	7.7%
	FY2012	4,478	13	0.3%
	FY2013	4,243	0	0%
	FY2014	3,302	0	0%
	FY2015	2,783	0	0%
	FY2016	2,155	0	0%
	FY2017	1,579	1	0.06%
	FY2018	1,296	0	0%
	FY2019	1,052	0	0%
	FY2020	891	0	0%
Beans	After the accident to the end of FY2011	689	16	2.3%
	FY2012	5,962	63	1.1%
	FY2013	5,167	21	0.4%
	FY2014	3,459	4	0.1%
	FY2015	1,813	0	0%
	FY2016	957	0	0%
	FY2017	499	0	0%
	FY2018	234	0	0%
	FY2019	149	0	0%
	FY2020	119	0	0%



*Values for beans are those compiled based on production years.

* Coverage: 17 prefectures including the Tokyo Metropolis designated as inspection targets in the "Concepts of Inspection Planning and Establishment and Cancellation of Items and Areas to which Restriction of Distribution and/or Consumption of Foods Concerned Applies," which compiles basic approaches concerning radioactive materials in foods