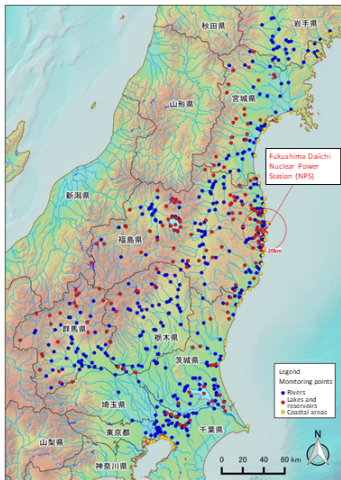


# Radioactive Material Monitoring in and around Fukushima Prefecture (Public Water Areas)



## [Coverage]

Whole Area of Fukushima, Miyagi, Ibaraki, Tochigi and Gunma Prefectures, and part of Iwate and Chiba Prefectures, etc.

## [Monitoring points]

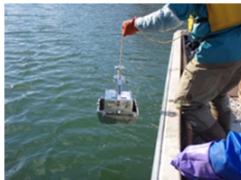
602 locations

## [Radionuclide analyses]

- Samples  
Water, sediments and Surrounding environment (soil)
  - Analyzed radionuclides  
Radioactive cesium  
Radioactive strontium (only for some water and sediment samples)
- [Frequencies]  
Twice to 10 times a year depending on the contamination status, etc.



(River: water sampling)



(Lake: sediments sampling)

# Radioactive Material Monitoring in the Water Environment (River Sediments)

## Distribution of Radioactive Cesium Concentrations in River Sediments (FY2020)

[Number of collected samples]

Radioactive cesium concentrations [Bq/kg(dry)]	Iwate Prefecture	Miyagi Prefecture	Fukushima Prefecture, Hamadori District	Fukushima Prefecture, Nakadori District	Fukushima Prefecture, Aizu District	Ibaraki Prefecture	Tochigi Prefecture	Gunma Prefecture	Chiba Prefecture	Saitama Prefecture	Tokyo Metropolis	Total	Percentage
Less than 1,000	61	147	206	236	116	159	204	160	147	6	6	1,448	98.9%
1,000 or more but less than 2,000	0	0	14	0	0	0	0	0	2	0	0	16	1.1%
2,000 or more but less than 3,000	0	0	0	0	0	0	0	0	0	0	0	0	0.0%
3,000 or more but less than 4,000	0	0	0	0	0	0	0	0	0	0	0	0	0.0%
4,000 or more but less than 5,000	0	0	0	0	0	0	0	0	0	0	0	0	0.0%
5,000 or more but less than 10,000	0	0	0	0	0	0	0	0	0	0	0	0	0.0%
10,000 or more	0	0	0	0	0	0	0	0	0	0	0	0	0.0%
Total	61	147	220	236	116	159	204	160	149	6	6	1,464	100.0%

# Radioactive Material Monitoring in the Water Environment (Lake and Reservoir Sediments)

## Distribution of Radioactive Cesium Concentrations in Lake and Reservoir Sediments (FY2020)

[Number of collected samples]

Radioactive cesium concentrations [Bq/kg(dry)]	Miyagi Prefecture	Fukushima Prefecture, Hamadori District	Fukushima Prefecture, Nakadori District	Fukushima Prefecture, Aizu District	Ibaraki Prefecture	Tochigi Prefecture	Gunma Prefecture	Chiba Prefecture	Total	Percentage
Less than 1,000	52	76	33	114	56	24	61	21	437	73.1%
1,000 or more but less than 2,000	0	20	7	13	1	0	10	3	54	9.0%
2,000 or more but less than 3,000	0	13	5	10	0	0	0	0	28	4.7%
3,000 or more but less than 4,000	0	9	5	4	0	0	1	0	19	3.2%
4,000 or more but less than 5,000	0	3	1	0	0	0	0	0	4	0.7%
5,000 or more but less than 10,000	0	20	1	2	0	0	0	0	23	3.8%
10,000 or more	0	32	1	0	0	0	0	0	33	5.5%
Total	52	173	53	143	57	24	72	24	598	100.0%

# Radioactive Material Monitoring in the Water Environment (Coastal Area Sediments)

## Distribution of Radioactive Cesium Concentrations in Coastal Area Sediments (FY2020)

[Number of collected samples]

Radioactive cesium concentrations [Bq/kg(dry)]	Iwate Prefecture	Miyagi Prefecture	Fukushima Prefecture	Ibaraki Prefecture	Chiba Prefecture	Tokyo Metropolis	Total	Percentage
Less than 1,000	4	40	120	15	18	13	210	100.0%
1,000 or more but less than 2,000	0	0	0	0	0	0	0	0.0%
2,000 or more but less than 3,000	0	0	0	0	0	0	0	0.0%
3,000 or more but less than 4,000	0	0	0	0	0	0	0	0.0%
4,000 or more but less than 5,000	0	0	0	0	0	0	0	0.0%
5,000 or more but less than 10,000	0	0	0	0	0	0	0	0.0%
10,000 or more	0	0	0	0	0	0	0	0.0%
Total	4	40	120	15	18	13	210	100.0%