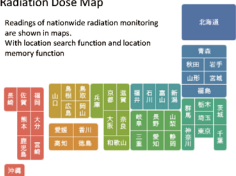
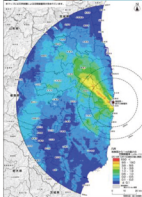


## Radiation Dose Map

Readings of nationwide radiation monitoring are shown in maps. With location search function and location memory function



※都道府県を選んでください。



## Radiation dose measurement map

Results of radiation monitoring nationwide are shown in a map.

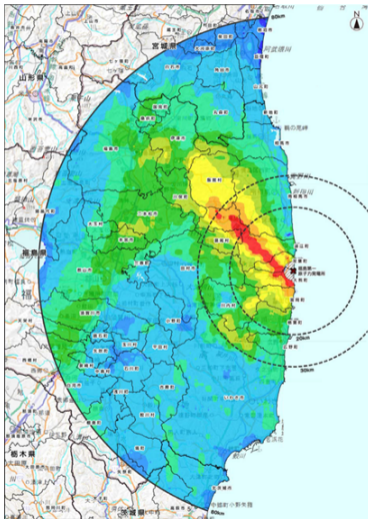
## Airborne monitoring

Monitoring using airplanes is conducted on a regular basis, centered on Fukushima Prefecture. The results are compiled into ambient dose rate maps and released.

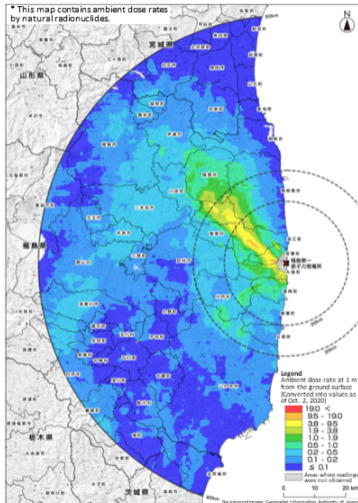
## Sea area monitoring

Relevant ministries and agencies conduct monitoring of seawater, marine soil and marine organisms and release measurement results.

# Distribution of Ambient Dose Rates within the 80-km Zone of TEPCO's Fukushima Daiichi NPS



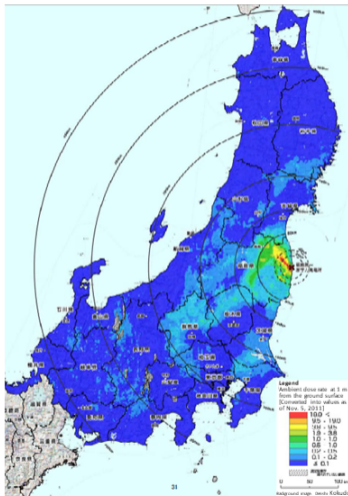
Released by the Ministry of Education, Culture, Sports, Science  
and Technology (MEXT) on Dec. 16, 2011



\* Converted into values as of October 2, 2010

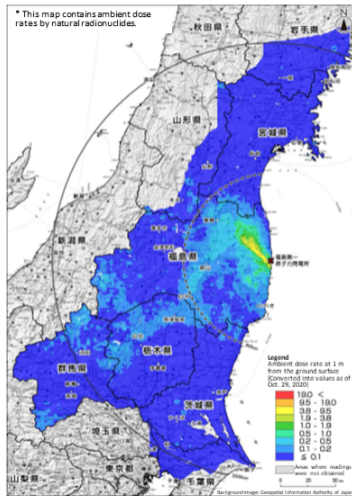
Released by the Nuclear Regulation Authority on Feb. 15, 2011

# Distribution of Ambient Dose Rates in Fukushima Prefecture and Neighboring Prefectures



\* Converted into values as of Nov. 5, 2011

Released by the Ministry of Education, Culture, Sports, Science and Technology (MEXT) on Dec. 16, 2011



\* Converted into values as of Oct. 29, 2020

Released by the Nuclear Regulation Authority on Feb. 15, 2021