

Comprehensive Radiation Monitoring Plan and Information Disclosure



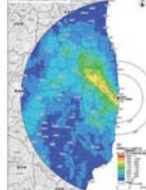
Radiation Dose Map

Readings of nationwide radiation monitoring are shown in maps. With location search function and location memory function.



Radiation dose measurement map

Results of radiation monitoring nationwide are shown in a map.



Airborne monitoring

Monitoring using airplanes is conducted on a regular basis, centered on Fukushima Prefecture. The results are compiled into ambient dose rate maps and released.



Sea area monitoring

Relevant ministries and agencies conduct monitoring of seawater, marine soil and marine organisms and release measurement results.

Prepared based on Nuclear Regulation Authority; Monitoring information of environmental radioactivity level: <https://radioactivity.nsr.go.jp/ja/> (in Japanese)
Comprehensive Monitoring Plan: <https://radioactivity.nsr.go.jp/ja/list/204/list-1.html> (in Japanese)

The Monitoring Coordination Meeting established in the Nuclear Emergency Response Headquarters formulated Comprehensive Radiation Monitoring Plan to ensure detailed monitoring of a large amount of radioactive materials released into the environment due to the accident at Tokyo Electric Power Company (TEPCO)'s Fukushima Daiichi NPS. Based on this plan, relevant organizations and nuclear operators are collaboratively conducting monitoring, respectively focusing on the following.

- 1) General environment (soil, water, and atmosphere, etc.), water environment, sea areas, etc.
- 2) Schools, etc.
- 3) Ports, airports, and sewage, etc.
- 4) Wild fauna and flora, and waste
- 5) Cultivated soil, forests, and pasture grass, etc.
- 6) Tap water
- 7) Foodstuffs (agricultural products, forestry products, livestock products, and fishery products)

Monitoring results are released on the websites of the respective organizations and are updated as needed.

Included in this reference material on February 28, 2018

Updated on March 31, 2019