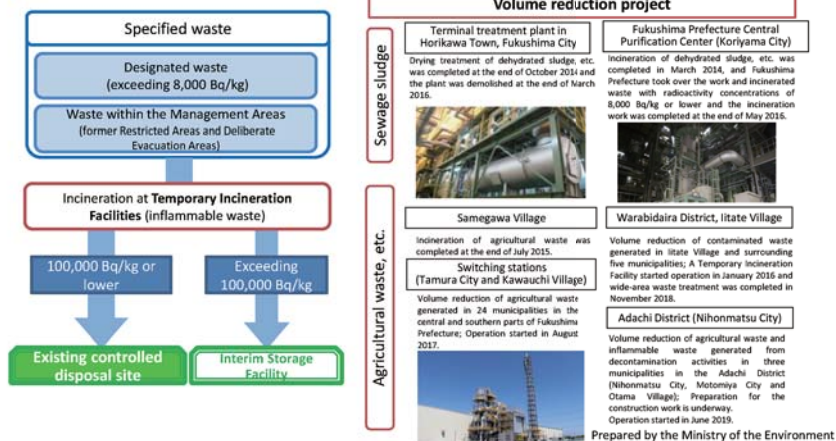


## Procedures for Disposal of Designated Waste in Fukushima Prefecture

- The Ministry of the Environment has been carrying out a program to reduce volume and stabilize properties of designated waste through incineration and drying, etc.
- With regard to designated waste generated in Fukushima Prefecture, waste with radioactivity concentrations exceeding 8,000 Bq/kg but 100,000 Bq/kg or lower is to be transported to the existing controlled disposal site, while waste with radioactivity concentrations exceeding 100,000 Bq/kg is to be transported to the Interim Storage Facility.



In Fukushima Prefecture, designated waste with radioactivity concentrations exceeding 8,000 Bq/kg but 100,000 Bq/kg or lower is to be transported to the existing controlled disposal site, while designated waste with radioactivity concentrations exceeding 100,000 Bq/kg is to be transported to the Interim Storage Facility.

Additionally, designated waste is incinerated, dried or otherwise handled to reduce volume and stabilize their properties in Fukushima Prefecture.

Included in this reference material on January 18, 2016

Updated on March 31, 2021