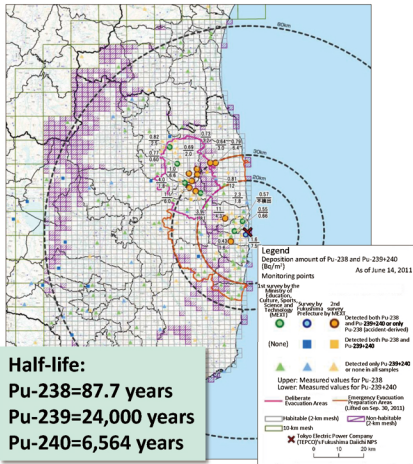


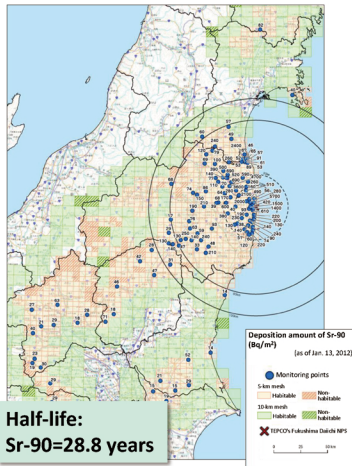
Plutonium and Strontium (Eastern Part of Fukushima Prefecture, Wider Areas)

Deposition Amount of Pu-238 and Pu-239+240
(as of June 14, 2011)



Half-life:
Pu-238=87.7 years
Pu-239=24,000 years
Pu-240=6,564 years

Deposition Amount of Sr-90
(as of Jan. 13, 2012)



Half-life:
Sr-90=28.8 years

Bq/m²: becquerels per square meter

Left: Released by MEXT on Aug. 21, 2012 (partially corrected on July 1, 2013)

Right: Released by MEXT on Sep. 12, 2012 (partially corrected on Sep. 19, 2012 and July 1, 2013)

Plutonium (Fukushima Prefecture)

Analysis Results for Pu-238 and Pu-239+240 (Soil)

No. Location number

Upper: Results for Pu-238 (Bq/m²)

Lower: Results for Pu-239+240 (Bq/m²)

