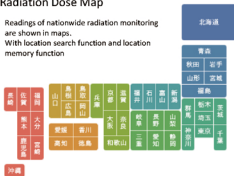
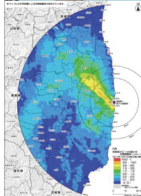
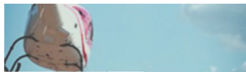


Radiation Dose Map

Readings of nationwide radiation monitoring are shown in maps. With location search function and location memory function



※地図検索機能を選んでください。



Radiation dose measurement map

Results of radiation monitoring nationwide are shown in a map.

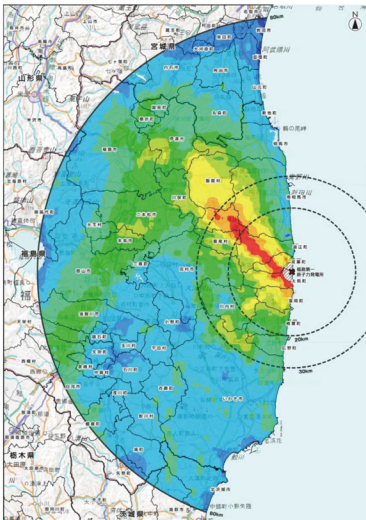
Airborne monitoring

Monitoring using airplanes is conducted on a regular basis, centered on Fukushima Prefecture. The results are compiled into ambient dose rate maps and released.

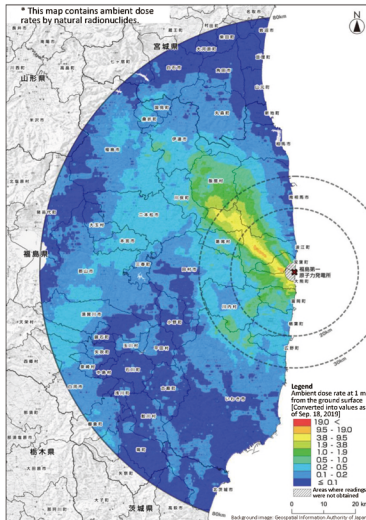
Sea area monitoring

Relevant ministries and agencies conduct monitoring of seawater, marine soil and marine organisms and release measurement results.

Distribution of Ambient Dose Rates within the 80-km Zone of TEPCO's Fukushima Daiichi NPS

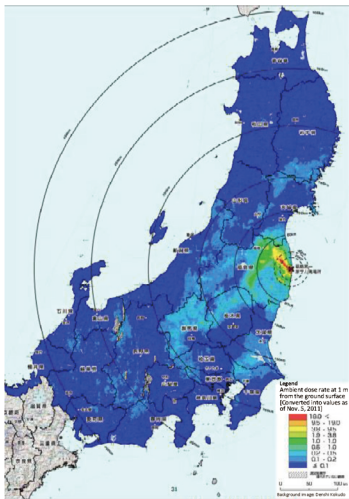


Released by the Ministry of Education, Culture, Sports, Science and Technology (MEXT) on Dec. 16, 2011



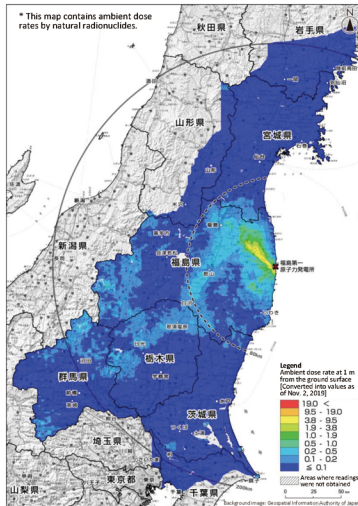
Released by the Nuclear Regulation Authority on Feb. 13, 2020

Distribution of Ambient Dose Rates in Fukushima Prefecture and Neighboring Prefectures



* Converted into values as of Nov. 5, 2011

Released by the Ministry of Education, Culture, Sports, Science and Technology (MEXT) on Dec. 16, 2011



* Converted into values as of Nov. 2, 2019

Released by the Nuclear Regulation Authority on Feb. 13, 2020