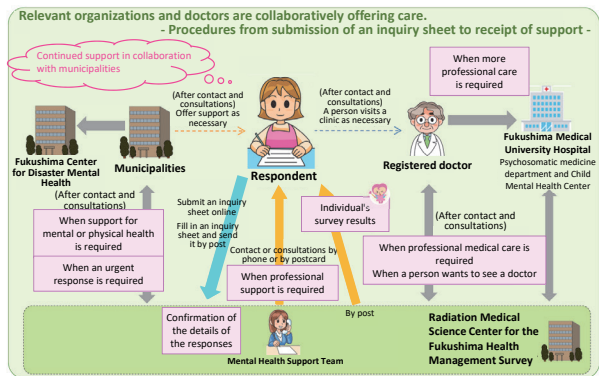


Mental Health and Lifestyle Survey: Outline (2/2)



* For people who are deemed to require continued support, care is provided on an ongoing basis through collaboration among regional registered doctors, municipalities and the Fukushima Center for Disaster Mental Health.

* Survey results are sent individually from FY2014.

[Registered doctors] Psychiatrists and pediatricians, etc., who have received disaster mental health and radiation medical science: As of the end of December 2017, there are 130 registered doctors in 81 medical institutions.

	Number of people who received support by phone		Number of people who received support in writing	
	Children	People aged 16 or older	Children	People aged 16 or older
FY2011	1,180	6,310	1,066	10,898
FY2012	623	5,991	800	10,168
FY2013	473	3,913	752	7,664
FY2014	327	3,053	517	6,244
FY2015	250	2,567	435	6,075

Prepared based on the materials for the 11th, 15th, 19th, 22nd, 26th and 27th Prefectural Oversight Committee Meetings for Fukushima Health Management Survey

Analysis results are individually sent to people who have submitted inquiry sheets.

For respondents who are considered to require professional support as a result of analyzing their responses, clinical psychotherapists, public health nurses, or clinical nurses, etc. make a phone call to give advice and support concerning problems with their mental health and lifestyles. For people who did not enter their telephone numbers in inquiry sheets, contact is made in writing.

Remarks by people who have received support by phone include, "I am glad that I can confess what I cannot say to my family," or, "I am relieved to know that I can call this number to make consultations whenever I feel depressed."

Regarding those in need of continued support or professional medical care, relevant information is shared among municipalities, the Fukushima Center for Disaster Mental Health and registered doctors, on a case-by-case basis, to create a more positive support network.

Included in this reference material on March 31, 2013

Updated on December 28, 2017