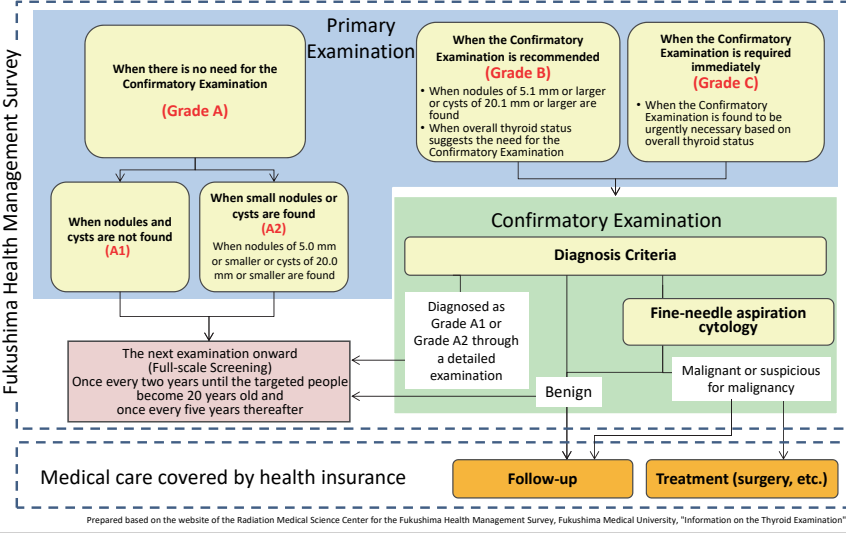


● Examination procedures and diagnosis criteria



10.3  
Thyroid Examination

This shows the procedures for the Thyroid Examination.

The Primary Examination checks whether there are any nodules or cysts and measures the sizes thereof, if any. The Confirmatory Examination is recommended to those who are considered to require a more detailed examination.

In the Confirmatory Examination, a more accurate ultrasound examination, plus blood and urine tests are conducted, and fine-needle aspiration cytology is also conducted when a doctor considers it necessary.

The Thyroid Examination is completed at this point.

Then, individuals who are found to require treatment receive it from their regular healthcare provider, under the relevant medical insurance system.

Included in this reference material on March 31, 2016

Updated on December 1, 2017