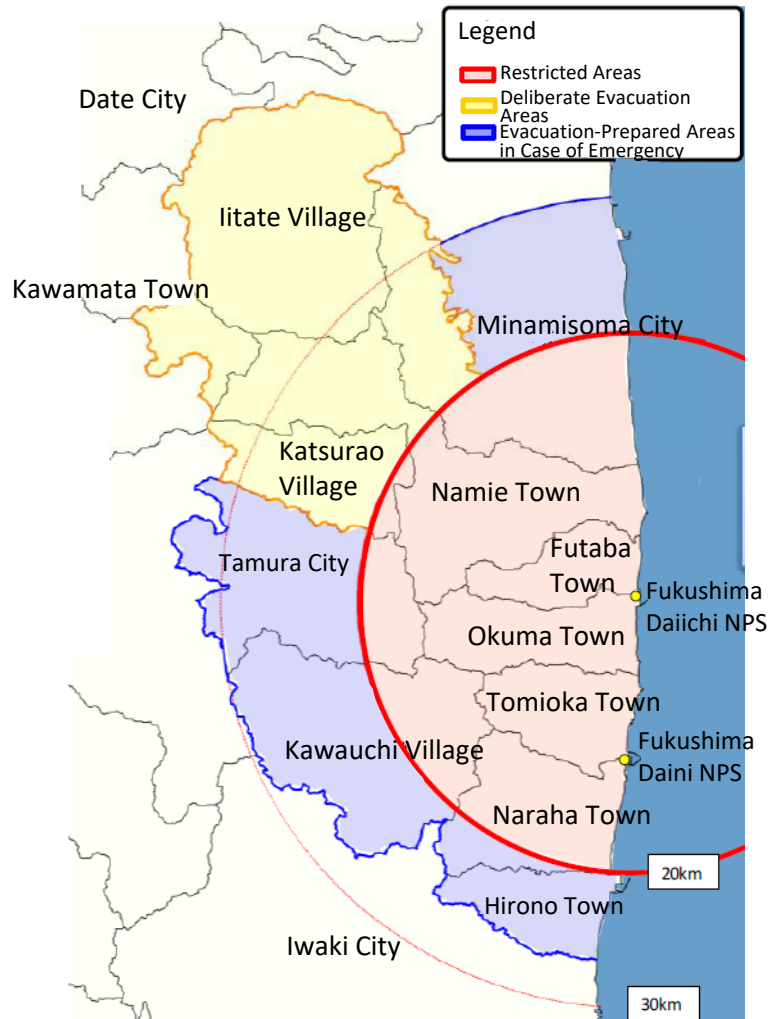
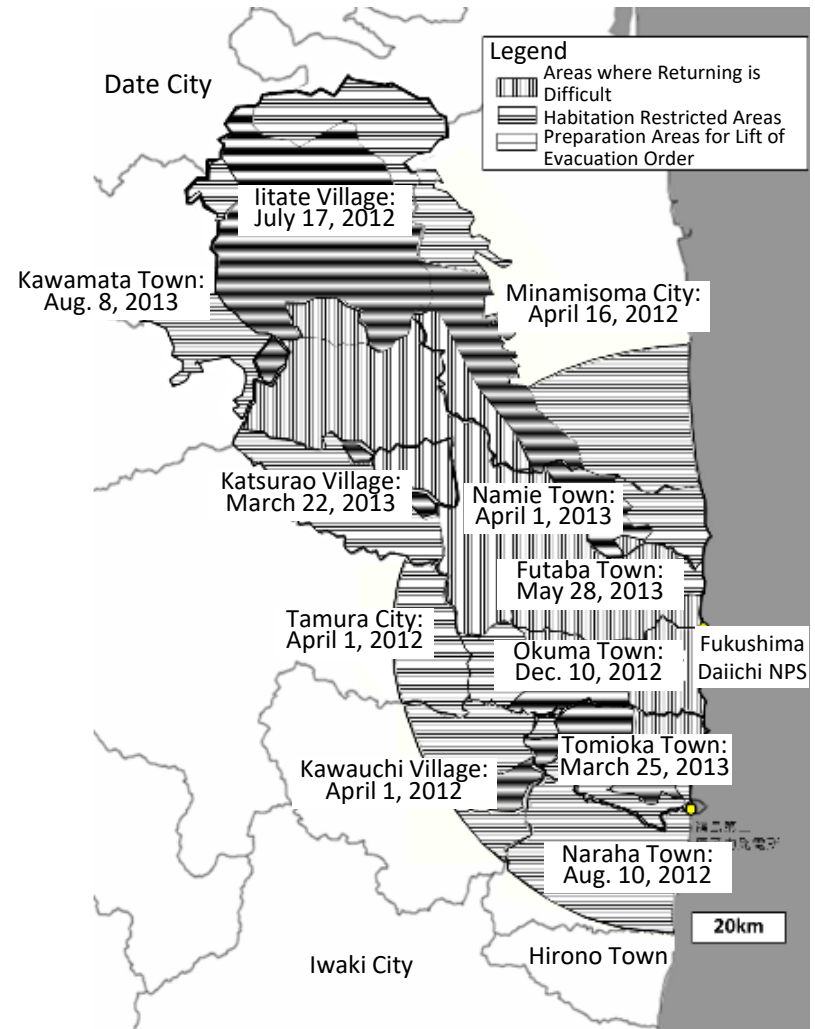


# Designation of Areas under Evacuation Orders



As of April 22, 2011

(Completion of area designation immediately after the accident)



As of August 2013

(Completion of rearrangement of areas)

# Designation of Restricted Areas and Areas under Evacuation Orders and Removal Thereof

<p>April 22, 2011, onward Area designation immediately after accident</p>	<p>April 2012, onward After confirming cold shutdown of the reactors</p>
<p><b>Restricted Areas</b> Areas within 20 km in radius from the Nuclear Power Station (NPS); The relevant areas were designated as Areas under Evacuation Orders on March 12, 2011.</p>	<p><b>Preparation Areas for Lift of Evacuation Order</b> Areas where it is confirmed that annual cumulative doses will surely become 20 mSv or lower<sup>(*)</sup></p>
<p><b>Deliberate Evacuation Areas</b> Areas 20 km or farther from the NPS where cumulative doses would be highly likely to exceed 20 mSv within one year after the accident</p>	<p><b>Habitation Restricted Areas</b> Areas where annual cumulative doses would be highly likely to exceed 20 mSv<sup>(*)</sup></p>
<p><b>Evacuation-Prepared Areas in Case of Emergency</b> Areas within 20 km to 30 km in radius from the NPS other than Deliberate Evacuation Areas; The relevant areas were designated as In-house Evacuation Areas on March 12, 2011.</p>	<p><b>Areas where Returning is Difficult</b> Areas where annual cumulative doses exceed 50 mSv<sup>(*)</sup> at present and would be highly likely to remain above 20 mSv<sup>(*)</sup> even after 6 years from the accident</p>

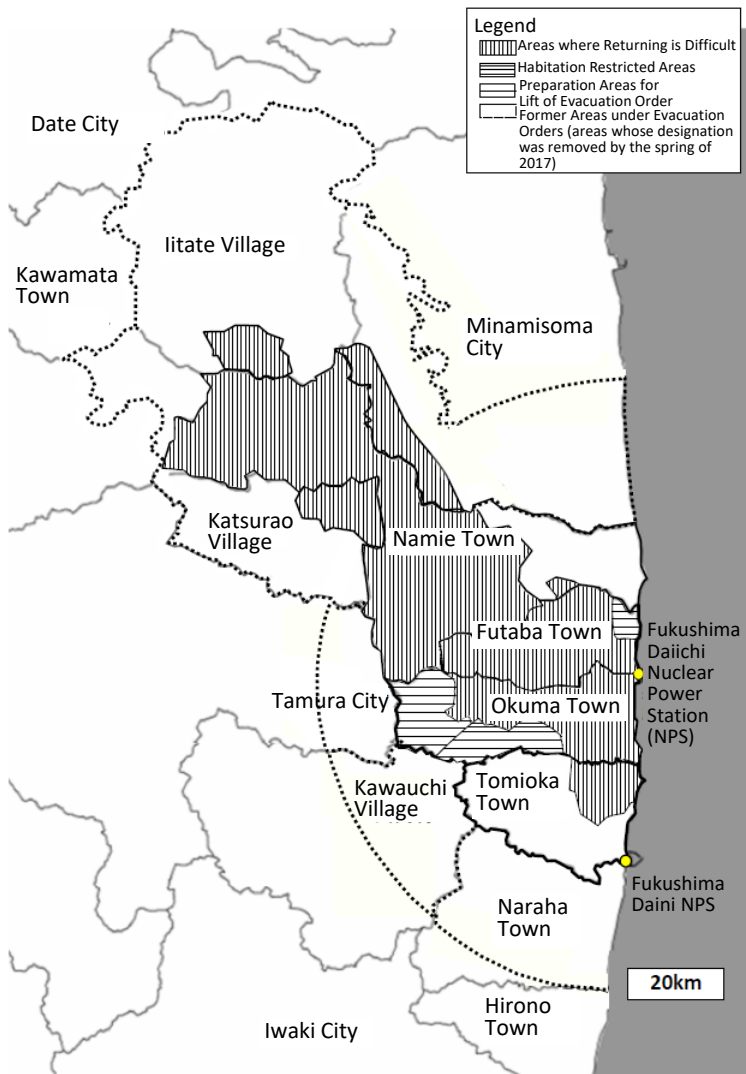
(\*) Based on the dose data obtained through the 4th airborne monitoring survey after correction as of March 31, 2012

## Areas under Evacuation Orders:

Areas for which evacuation orders were issued based on Article 15, paragraph (3) of the Act on Special Measures Concerning Nuclear Emergency Preparedness; Areas under Evacuation Orders and the 20-km zone of the Nuclear Power Station were rearranged and were newly designated as Preparation Areas for Lift of Evacuation Order, Habitation Restricted Areas or Areas where Returning is Difficult.

## Restricted Areas:

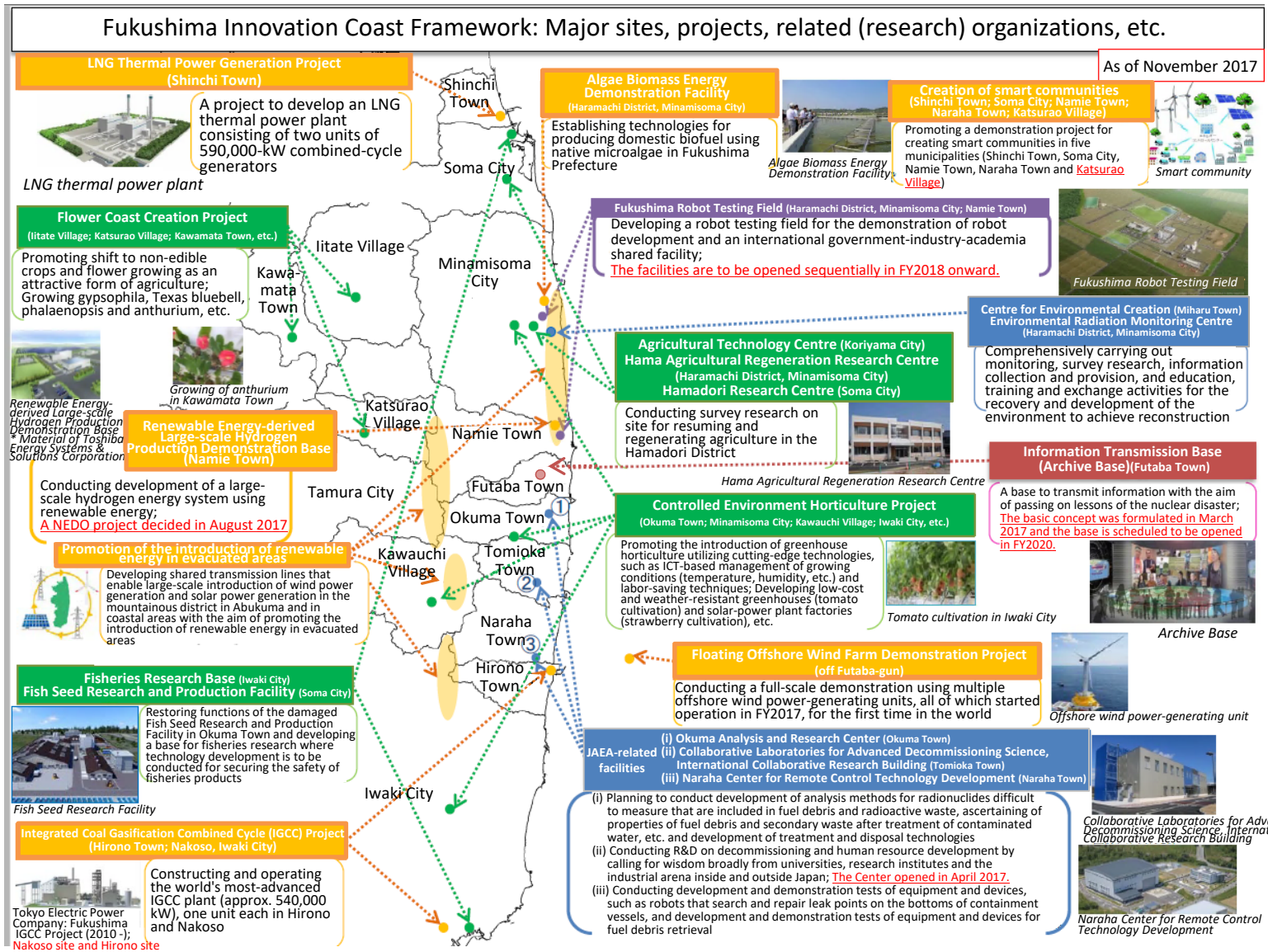
Areas where access is restricted pursuant to the provisions of Article 63, paragraph (1) of the Disaster Countermeasures Basic Act as applied pursuant to Article 28, paragraph (2) of the Act on Special Measures Concerning Nuclear Emergency Preparedness, following the deemed replacement of terms



### ○ Removal of the designation as Areas under Evacuation Orders for respective municipalities

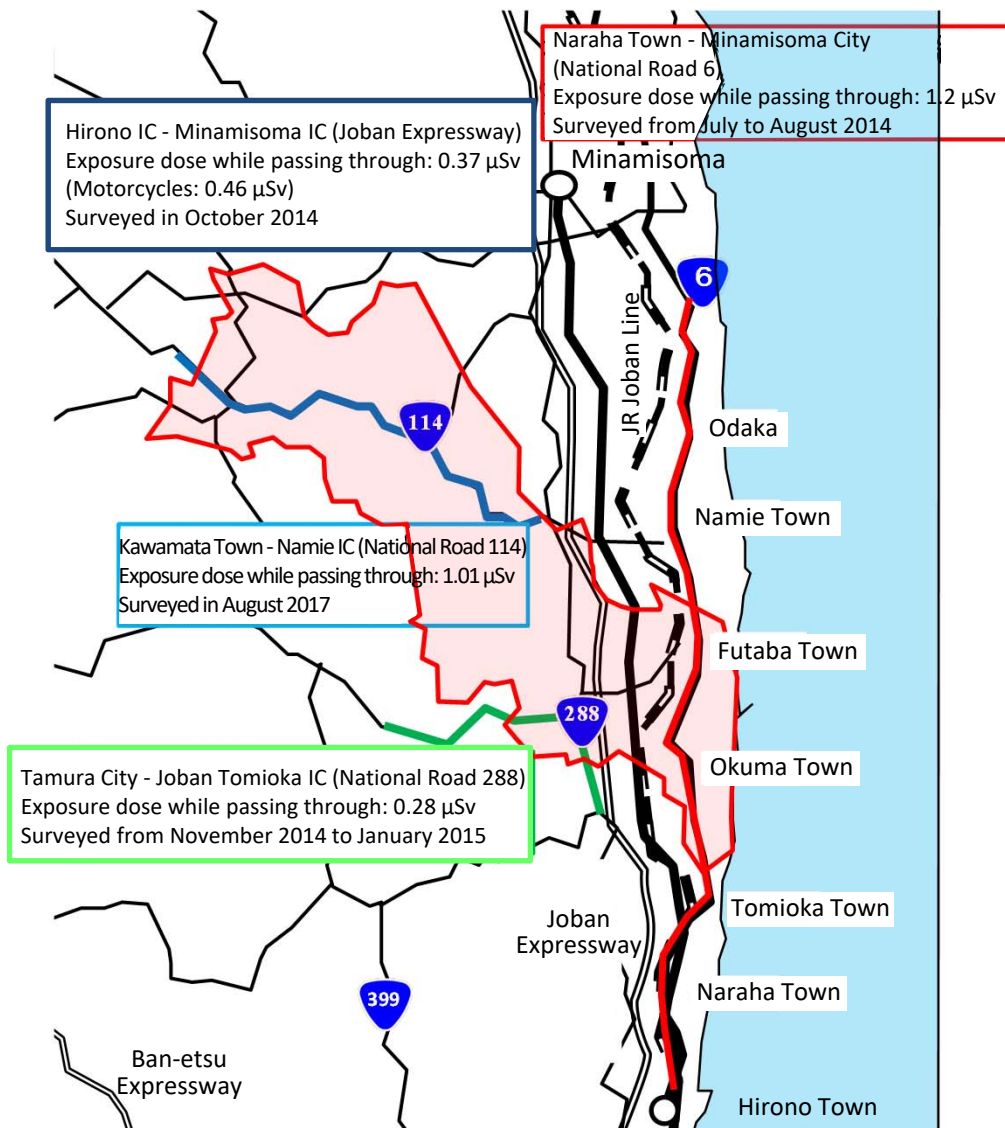
April 1, 2014	Tamura City	Removal of the designation as Preparation Areas for Lift of Evacuation Order
October 1	Kawauchi Village	Removal of the designation as Preparation Areas for Lift of Evacuation Order
		Shift from Habitation Restricted Areas to Preparation Areas for Lift of Evacuation Order
September 5, 2015	Naraha Town	Removal of the designation as Preparation Areas for Lift of Evacuation Order
June 12, 2016	Katsurao Village	Removal of the designation as Habitation Restricted Areas
		Removal of the designation as Preparation Areas for Lift of Evacuation Order
June 14	Kawauchi Village	Removal of the designation as Preparation Areas for Lift of Evacuation Order
July 12	Minamisoma City	Removal of the designation as Habitation Restricted Areas
		Removal of the designation as Preparation Areas for Lift of Evacuation Order
March 31, 2017	Iitate Village, Kawamata Town, Namie Town	Removal of the designation as Habitation Restricted Areas
		Removal of the designation as Preparation Areas for Lift of Evacuation Order
April 1	Tomioka Town	Removal of the designation as Habitation Restricted Areas
		Removal of the designation as Preparation Areas for Lift of Evacuation Order

# Fukushima Innovation Coast Framework



"Progress of the Fukushima Innovation Coast Framework," the first meeting of the Fukushima Innovation Coast Framework Promotion Committee

# Results of Radiation Dose Surveys along Major Roads in Areas where Returning is Difficult



## Joban Expressway

The entirety was restored with the reopening of the section between Namie IC and Joban Tomioka IC on March 1, 2015.

## JR Joban Line

The section between Tomioka Station and Namie Station is scheduled to be reopened at the end of FY2019.

## National roads and prefectural roads

Through operational change of the Special Transit Permission System, transit without carrying and presenting a pass came to be permitted for National Road 6 on September 15, 2014, for National Road 288 on February 28, 2015, and for National Road 114 on September 20, 2017.

## Exposure doses of drivers passing through, measured before reopening of roads

National Road 6 (special transit permission on September 15, 2014)

1.2  $\mu\text{Sv}$  (between Naraha Town and Minamisoma City)

\*Equivalent to one-167th of the exposure dose during a flight between Tokyo and New York (approx. 0.2 mSv)

Joban Expressway (reopened on March 1, 2015)

Four-wheeled vehicles: 0.37  $\mu\text{Sv}$ ; Motorcycles: 0.46  $\mu\text{Sv}$  (between Hirono IC and Minamisoma IC)

\*Equivalent to one-540th and one-430th, respectively, of the exposure dose during a flight between Tokyo and New York (approx. 0.2 mSv)

National Road 288 (special transit permission on March 1, 2015)

0.28  $\mu\text{Sv}$  (between Tamura City and Joban Tomioka IC)

National Road 114 (special transit permission on September 20, 2017)

1.01  $\mu\text{Sv}$  (between Kawamata Town and Namie IC)