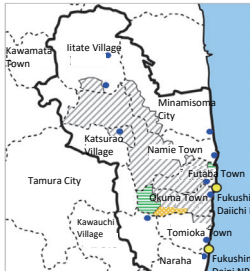


Progress of Disposal of Disaster Waste Directly Governed by the National Government in Designated Areas in Fukushima Prefecture



As of April 1, 2017

- Contaminated Waste Management Areas
- Habitation Restricted Areas
- Temporary Incineration Facilities (including planned facilities and those already demolished, etc.)
- Preparation Areas for Lift of Evacuation Order
- Areas where Returning is Difficult

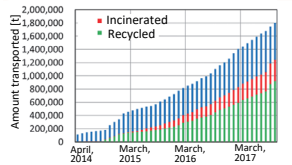


Temporary Incineration Facility in Okuma Town (December 2017)

Disaster waste has been disposed of based on the Treatment Plan on Waste within the Management Areas (partial revision on December 26, 2013).

[Amount of Waste within the Management Areas having been transported to Temporary Storage Sites]

As of the end of November 2017, a total of approx. 1.80 million tons of waste had been transported to Temporary Storage Sites (of which, approx. 320,000 tons were incinerated and approx. 920,000 tons were recycled).



Amount of Waste within the Management Areas having been transported from designated areas to Temporary Storage Sites

[Removal of tsunami rubble]

OTsunami rubble in former Restricted Areas was all transported to Temporary Storage Sites in March 2016, except for such rubble left in Areas where Returning is Difficult.

[Installation of Temporary Incineration Facilities]

Now treating disaster waste, etc.	Tomioka Town, Minamisoma City, Katsurao Village, Namie Town, Iitate Village (Warabidaira district), Naraha Town and Okuma Town
Preparing for placing orders	Futaba Town
Disposal of disaster waste completed	Kawauchi Village and Iitate Village (Komiya district)

* Tamura City and Kawamata Town use existing waste disposal facilities for disposing of disaster waste.



Temporary Incineration Facility in Naraha Town (Oct. 2016)

Prepared by the Ministry of the Environment

Waste within the Management Areas in Fukushima Prefecture has been disposed of based on the Plan on Waste within the Management Areas, which was revised in December 2013.

Such waste, which includes tsunami rubble, debris of damaged houses, and waste from houses after cleaning-up, has been transported sequentially to Temporary Storage Sites. As of the end of November 2017, a total of approx. 1.8 million tons had already been transported. Transported waste is recycled as much as possible.

It was decided to incinerate inflammable waste to reduce volume at provisional incineration facilities to be constructed at ten locations in nine municipalities. As of January 2018, seven such facilities were in operation and waste is being steadily disposed of and treated.

Included in this reference material on February 28, 2018