

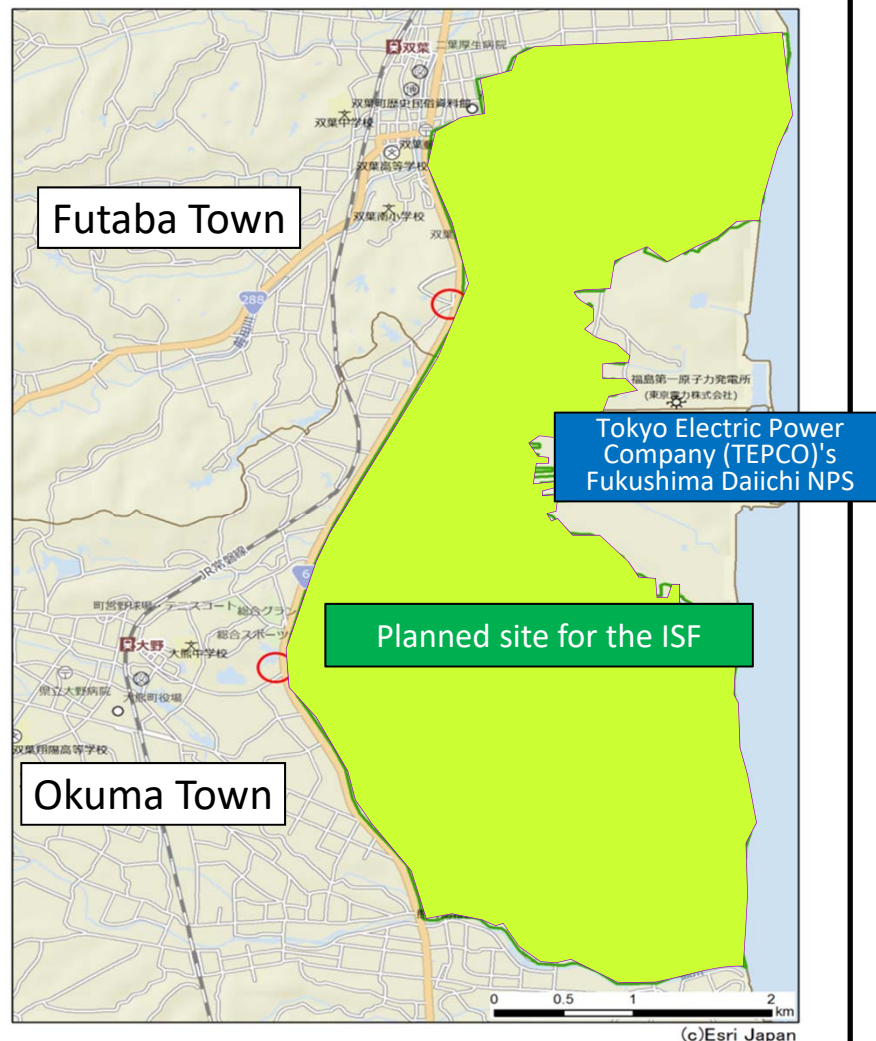
## Outline of the Interim Storage Facility

- In Fukushima Prefecture, large quantities of contaminated soil and waste have been generated from decontamination works.  
\* Estimated to be approx. 16 million to 22 million m<sup>3</sup>  
(equivalent to approx. 13 to 18 times the volume of the Tokyo Dome)
- Currently, it is difficult to clarify methods of final disposal of the soil and waste.
- **It is necessary to establish an Interim Storage Facility (ISF) in order to manage and store the soil and waste safely and intensively until final disposal.**

(Site Area: approx. 16 km<sup>2</sup>)

- Removed soil and waste generated from decontamination works in Fukushima Prefecture and incineration ash with radioactivity concentrations exceeding 100,000 Bq/kg are stored.
- The national government has legally specified its intention to take measures necessary for completing final disposal outside Fukushima Prefecture within 30 years after the commencement of interim storage (the Amended JESCO (Japan Environmental Storage & Safety Corporation) Act was promulgated in November 2014).

## < Planned site for the Interim Storage Facility >

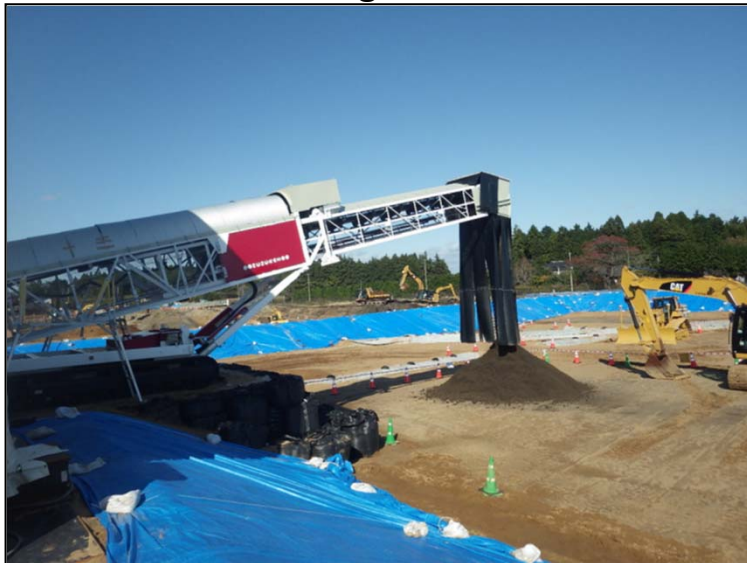


# Construction of Interim Storage Facility

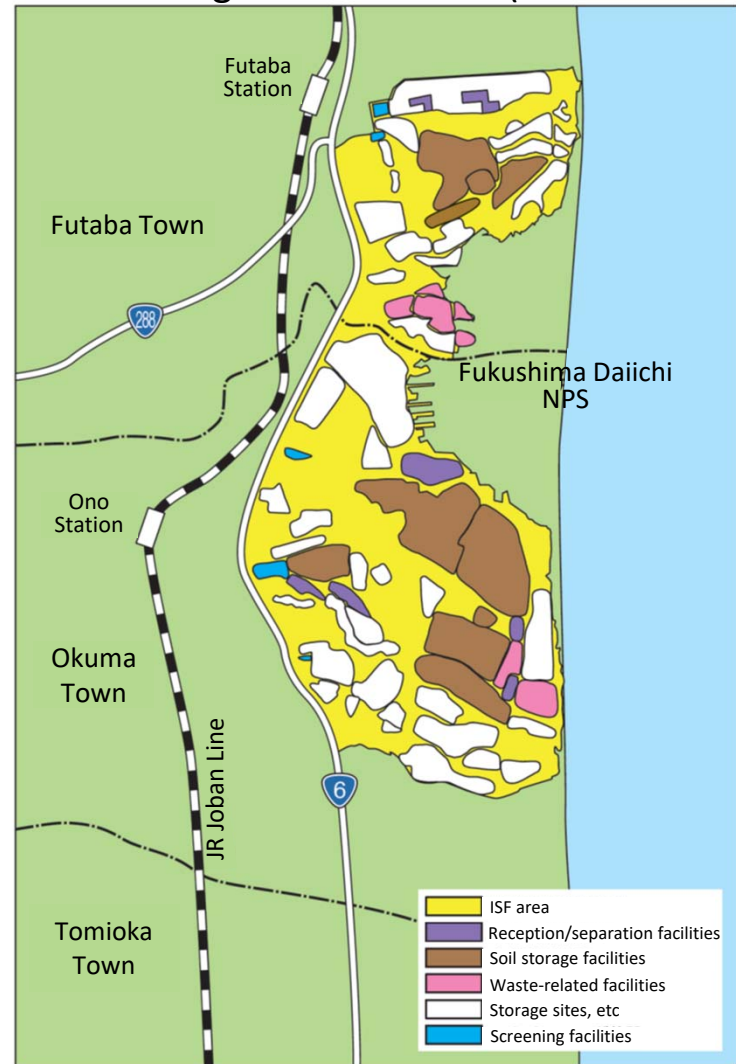
Reception/Separation Facilities



Soil Storage Facilities



<Perspective drawing of the facilities (November 2017)>



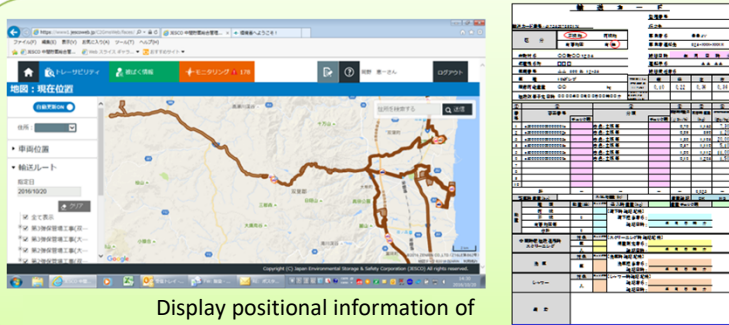
\* The figure above shows the envisaged area for each facility as of November 2017, within which facility construction is to be conducted concentrated in a certain location in light of the landform and progress of land acquisition. The plan can be changed in accordance with the progress of land acquisition and facility construction.

Prepared by the Ministry of the Environment

# Transportation of Removed Soil and Waste

- An accumulative total of approx. 640,000 m<sup>3</sup> of the removed soil and waste had been transported to the ISF by the end of January 2018.
- Approx. 1.8 million m<sup>3</sup> of the removed soil and waste is planned to be transported in FY2018.
- Safe and secure transportation will be sequentially conducted through managing the whole numbers of transport objects and operation of trucks used for transport, and conducting environmental monitoring, etc.

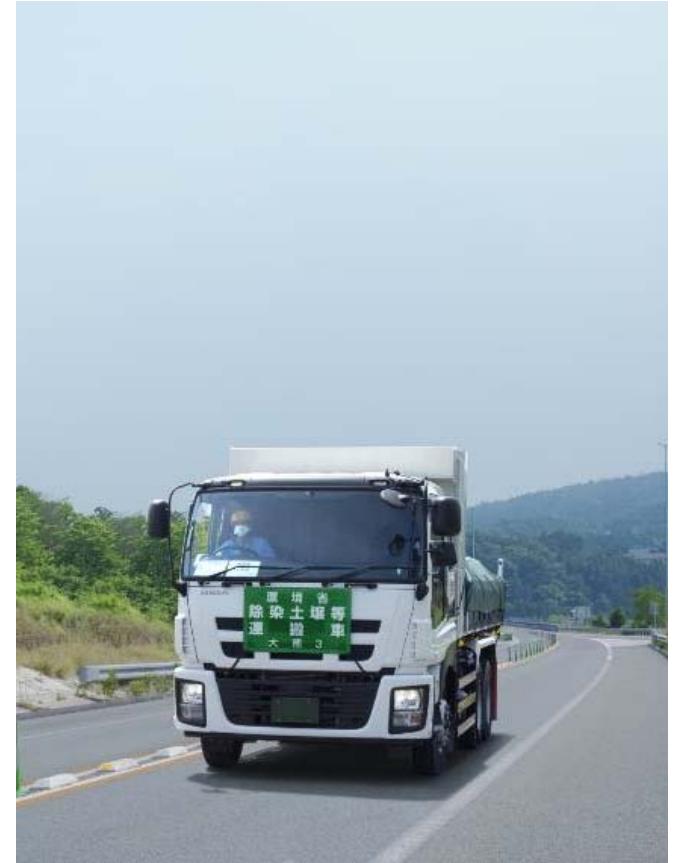
## < Outline of the truck management functions >



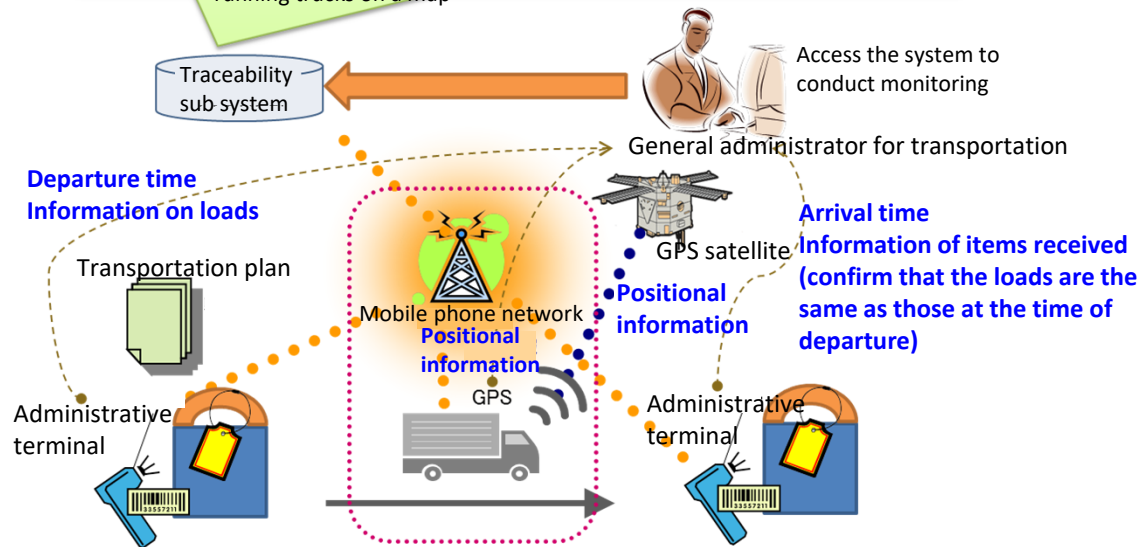
Display positional information of running trucks on a map

Manage information on loads using a transportation card

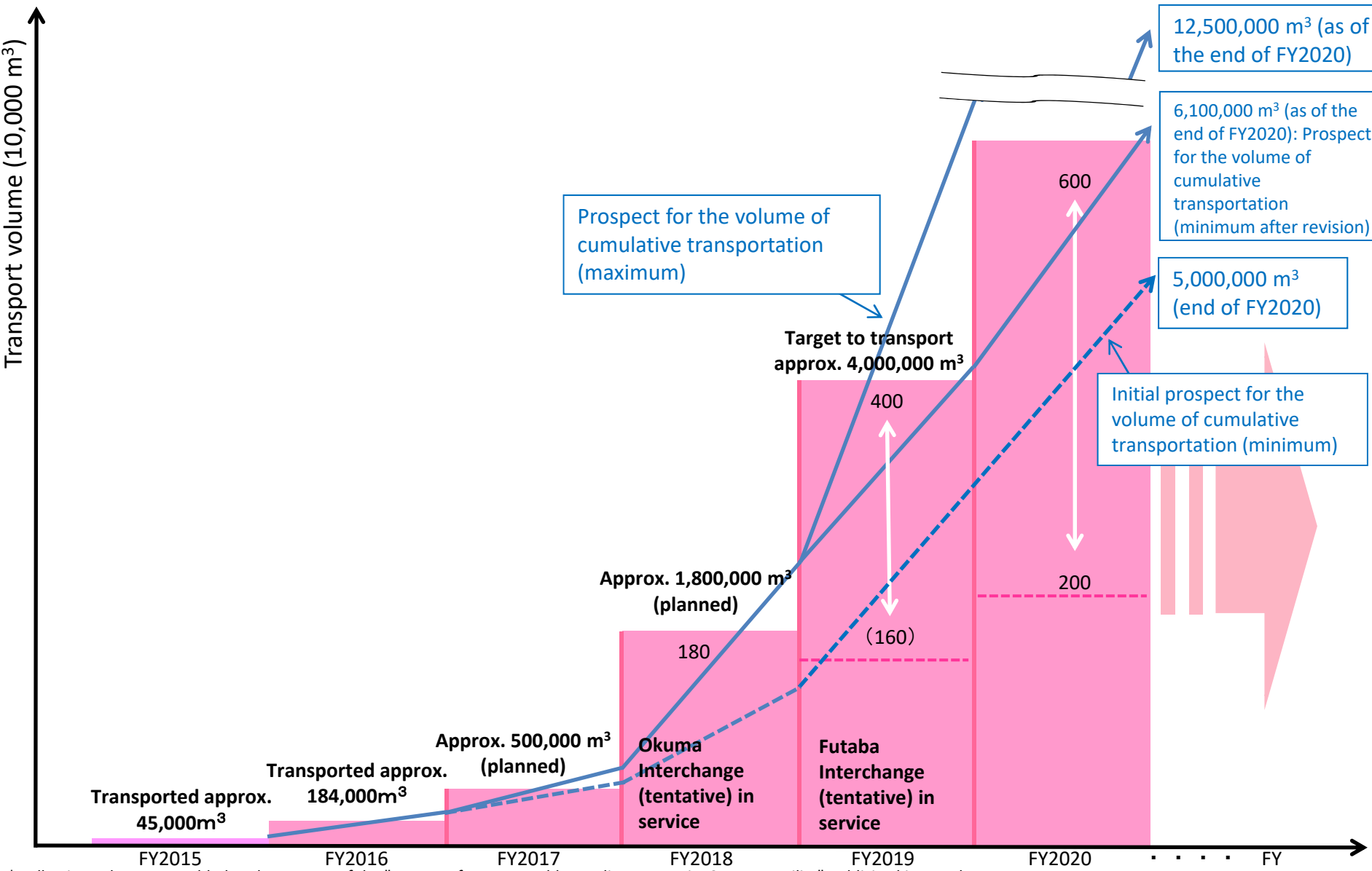
## < Transportation of the soil and waste >



Prepared by the Ministry of the Environment



# Prospect for 5-year Ad-hoc Policy on Interim Storage Facility (Publicized by the Ministry of the Environment on March 27, 2016)



\* Following volumes are added to the content of the "Prospect for 5-year Ad-hoc Policy on Interim Storage Facility" publicized in March 2016: (i) The actual volume transported in FY2015 and FY2016; (ii) Planned transportation volume for FY2017; (iii) Planned transportation volume for FY2018 and the target transportation volume for FY2019 indicated in the FY2018 Policies for the ISF Program.