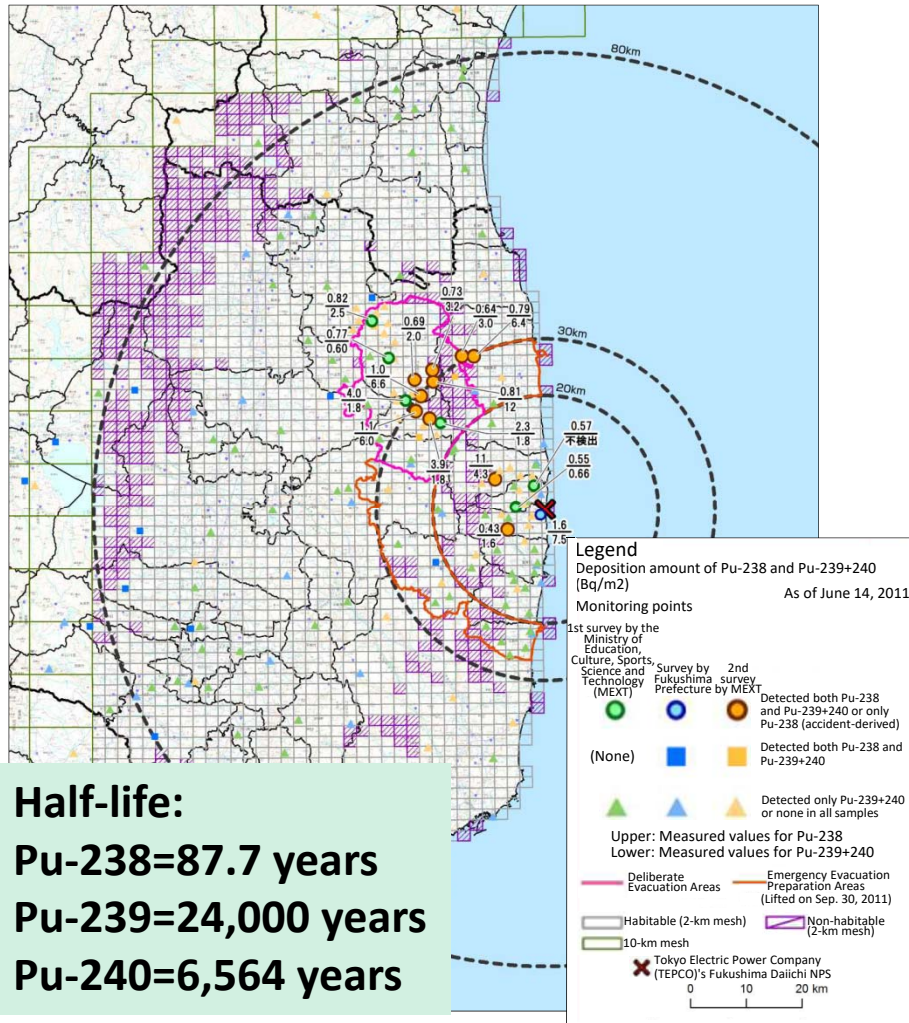


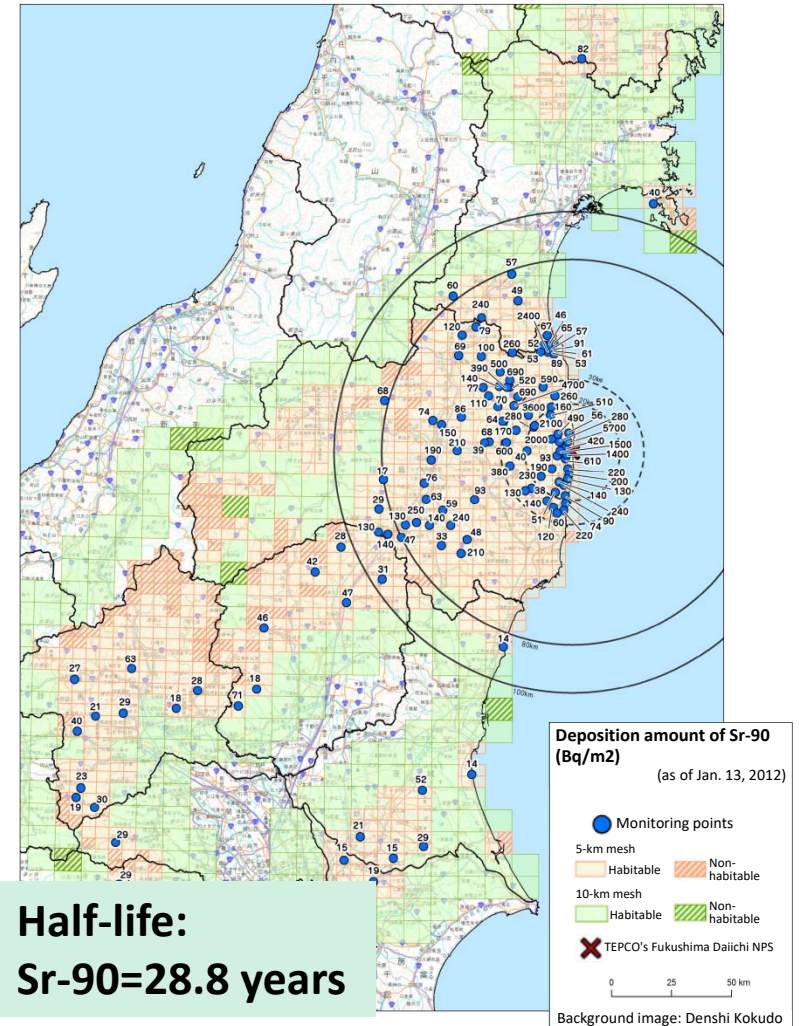
Deposition of Other Radioactive Materials

Plutonium and Strontium (Eastern Part of Fukushima Prefecture, Wider Areas)

Deposition Amount of Pu-238 and Pu-239+240 (as of June 14, 2011)



Deposition Amount of Sr-90 (as of Jan. 13, 2012)



Left: Released by MEXT on Aug. 21, 2012 (partially corrected on July 1, 2013)

Right: Released by MEXT on Sep. 12, 2012 (partially corrected on Sep. 19, 2012 and July 1, 2013)

Bq/m²: becquerels per square meter

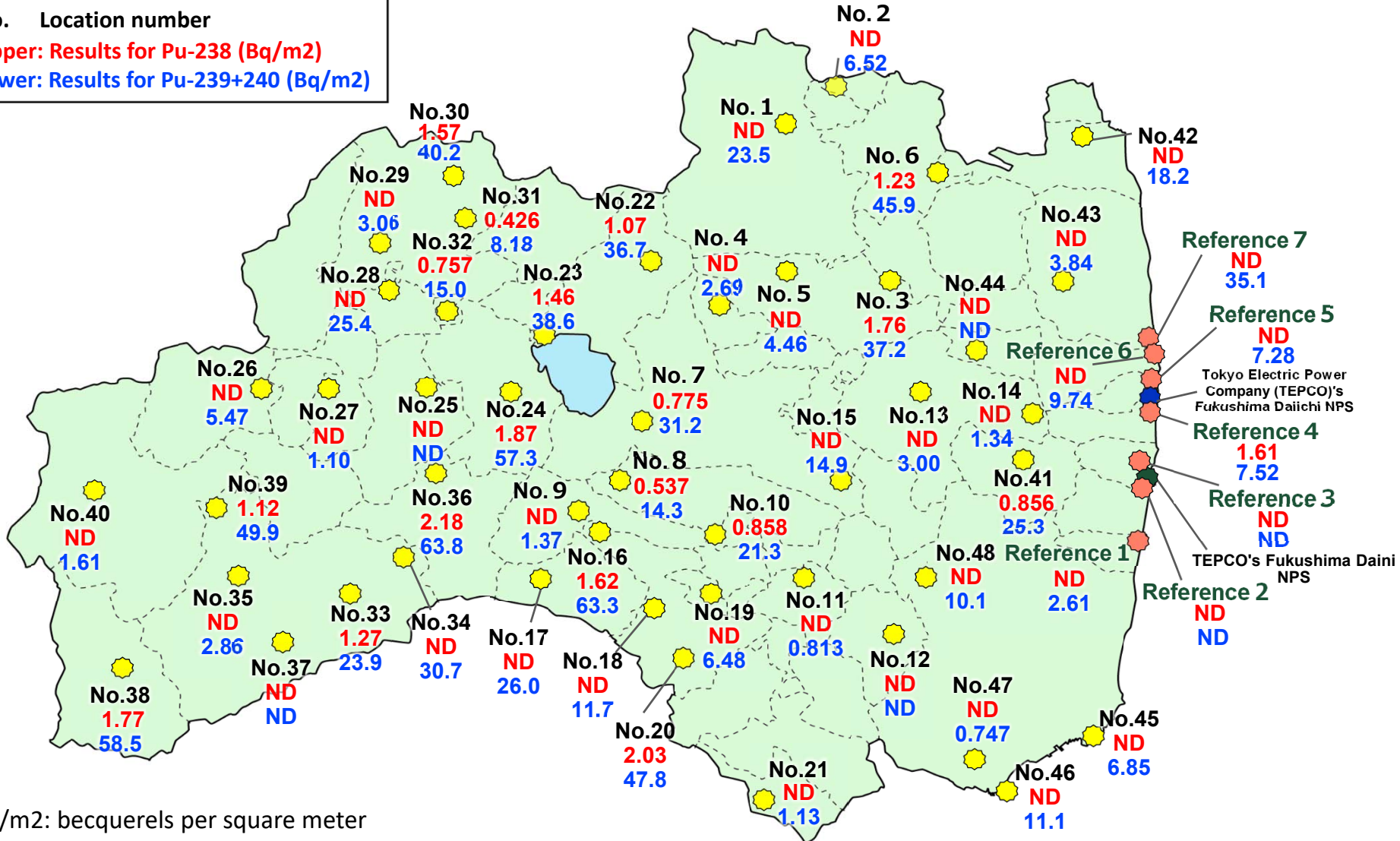
Plutonium (Fukushima Prefecture)

Analysis Results for Pu-238 and Pu-239+240 (Soil)

No. Location number

Upper: Results for Pu-238 (Bq/m²)

Lower: Results for Pu-239+240 (Bq/m²)



Bq/m²: becquerels per square meter