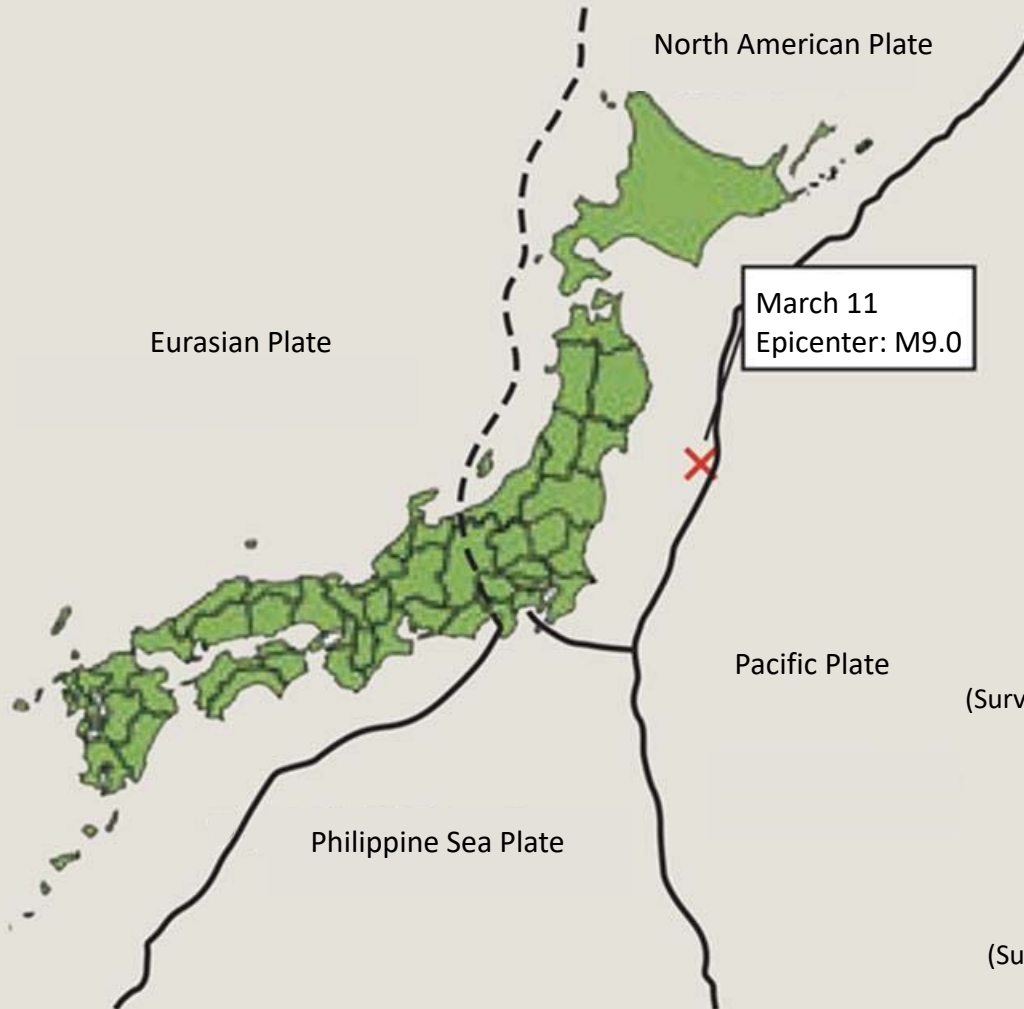


Damage due to the Great East Japan Earthquake

- A 9.0-magnitude earthquake occurred off the coast of Sanriku at 14:46 p.m. on Friday, March 11, 2011. The Earthquake and subsequent tsunami caused severe damage mainly to the Tohoku region.
- The earthquake was the largest ever recorded in Japan and the fourth biggest in the world since 1900.



Human damage	
Dead	15,894
Missing	2,546
Injured	6,156

Damage to buildings	
Completely destroyed	121,772
Half destroyed	280,921
Partially destroyed	726,509

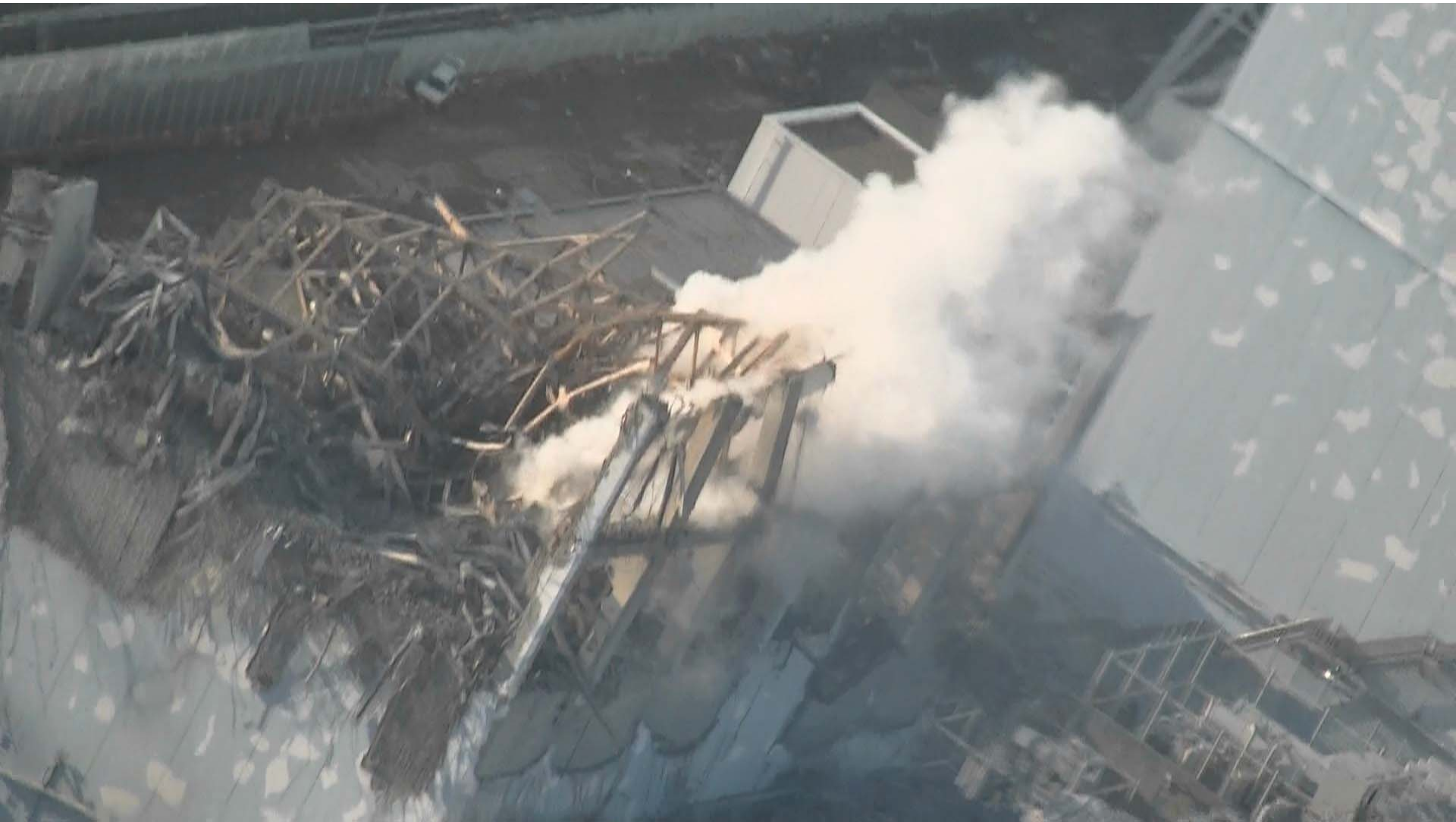
(Surveyed by the National Police Agency; as of December 8, 2017)

Disaster victim support	
Evacuees nationwide	75,206

(Surveyed by the Reconstruction Agency; as of January 16, 2018)

Fukushima Daiichi
Nuclear Power Station
(NPS) Accident

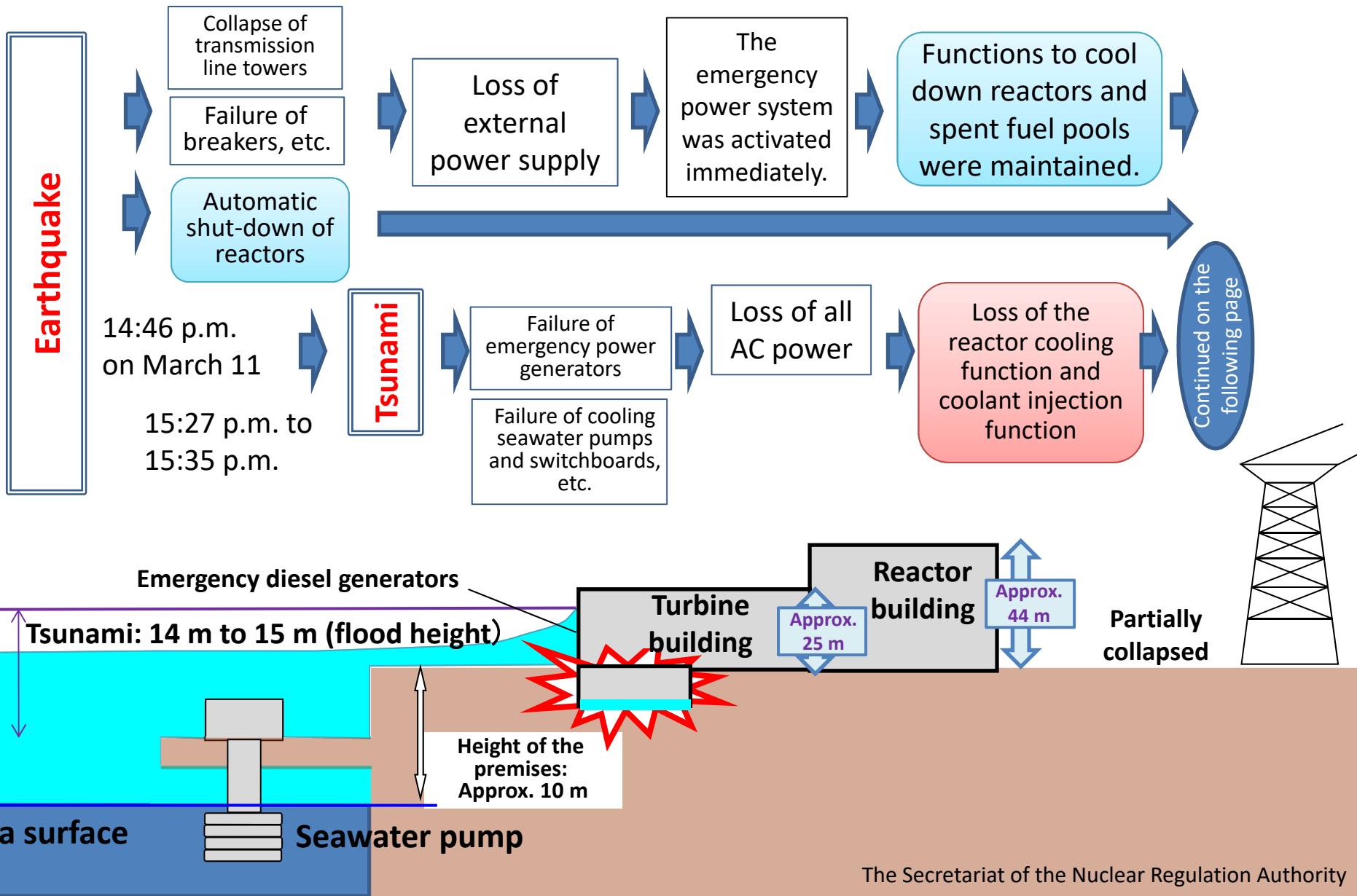
Accident at the Nuclear Power Station



**Tokyo Electric Power Company (TEPCO)'s Fukushima Daiichi NPS
Unit 3 (shot from the air)**

(Shot on March 16, 2011; Provided by TEPCO)

Factors of the Accident: (Estimated) Influence of the Earthquake and Tsunami



Factors of the Accident: (Estimated) Status within the Reactor

