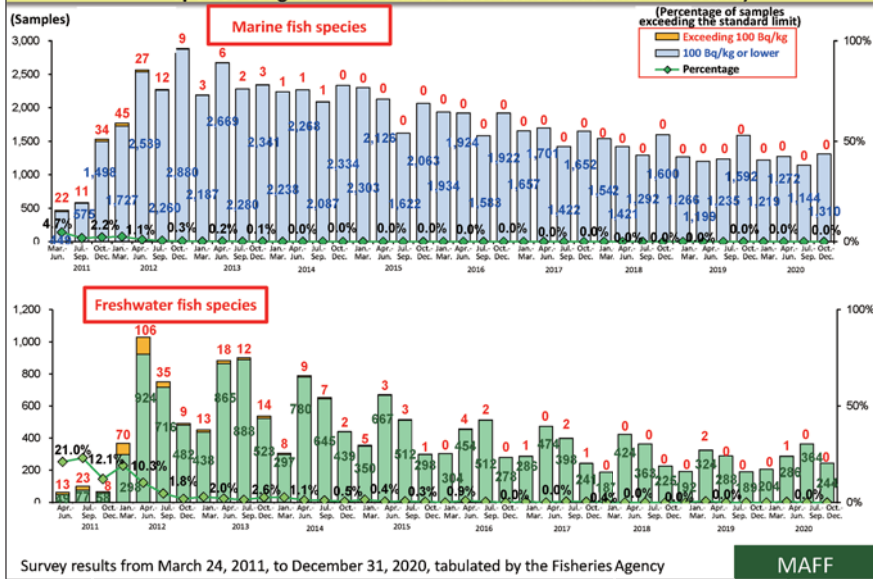


Inspection Results for Fishery Products (Marine Fish Species Caught off the Coast of Prefectures Other than Fukushima Prefecture and Freshwater Fish Species Caught in Prefectures Other than Fukushima Prefecture)



The percentage of samples with radioactive cesium concentrations exceeding the standard limit (100 Bq/kg) has also been decreasing among samples collected off or in prefectures other than Fukushima Prefecture. There have been no such marine fish samples since FY2015, but some freshwater fish samples still show radioactive cesium concentrations exceeding the standard limit.

Included in this reference material on March 31, 2014
 Updated on March 31, 2021