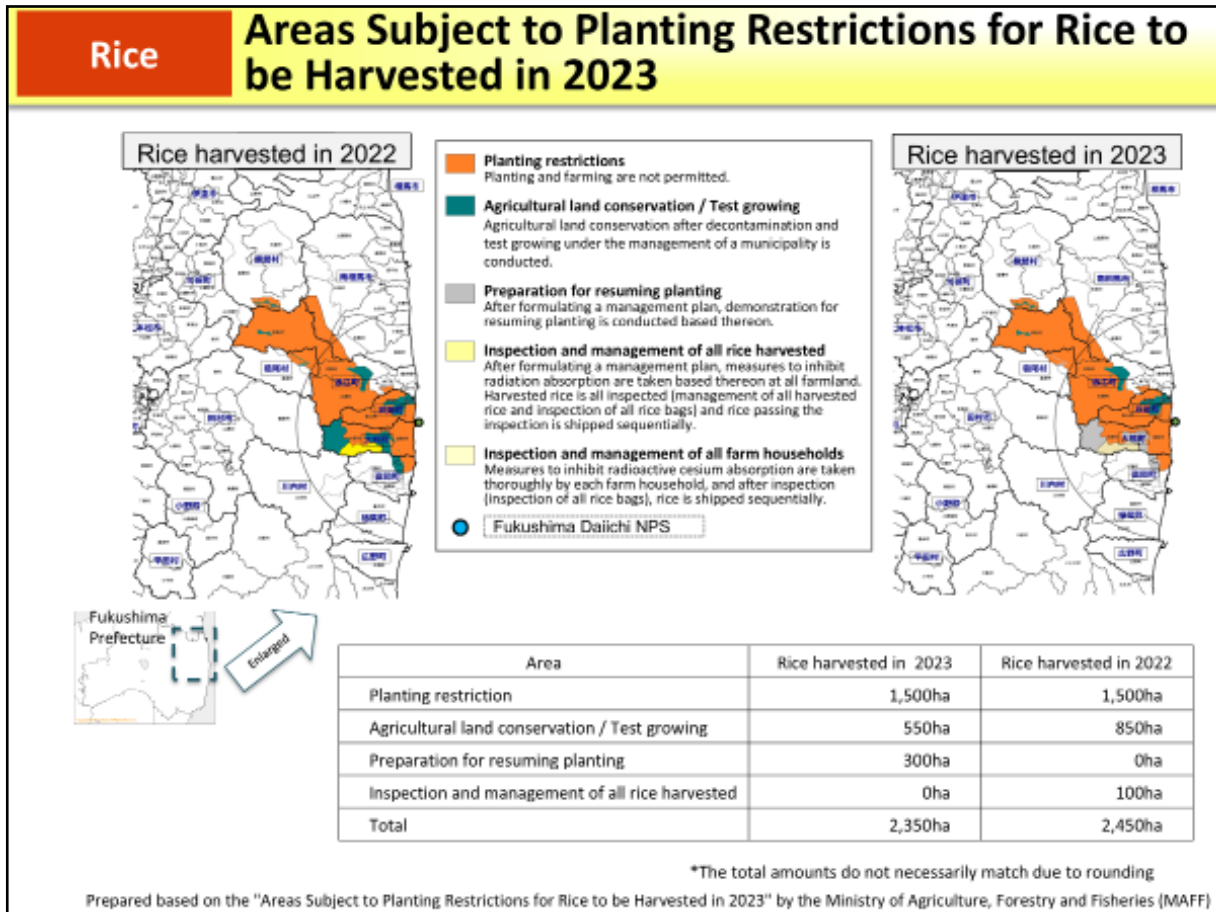


Rice

Areas Subject to Planting Restrictions for Rice to be Harvested in 2023



Entry and farming are restricted (planting restrictions) in Restricted Areas. In former Habitation Restricted Areas, etc., agricultural land conservation after decontamination and test growing under the management of the relevant municipalities may be conducted (agricultural land conservation/test growing), and in Preparation Areas for Lift of Evacuation Orders, etc., demonstration for resuming planting may be conducted under a management plan formulated by the prefecture and the relevant municipalities (preparation for resuming planting).

In areas not subject to evacuation orders that were under evacuation orders in the previous year or where rice containing radioactive cesium exceeding the standard limit was detected in the previous year, etc., the prefecture and the relevant municipalities formulate a management plan and measures to inhibit radioactive cesium absorption are taken thoroughly and all rice harvested in respective areas is managed and all bags are inspected (inspection and management of all rice harvested).

In areas where inspection and management of all rice harvested were obliged in the previous year and where rice containing radioactive cesium exceeding 50 Bq/kg was detected in the previous year, etc., measures to inhibit radioactive cesium absorption are taken thoroughly by each farm household and all farm households are inspected (inspection and management of all farm households). In Fukushima Prefecture, all rice bags are inspected, in principle.

However, Fukushima Prefecture started to adopt random inspection in lieu of inspection of all rice bags by stages starting from rice harvested in 2020.

Included in this reference material on February 28, 2018

Updated on March 31, 2024