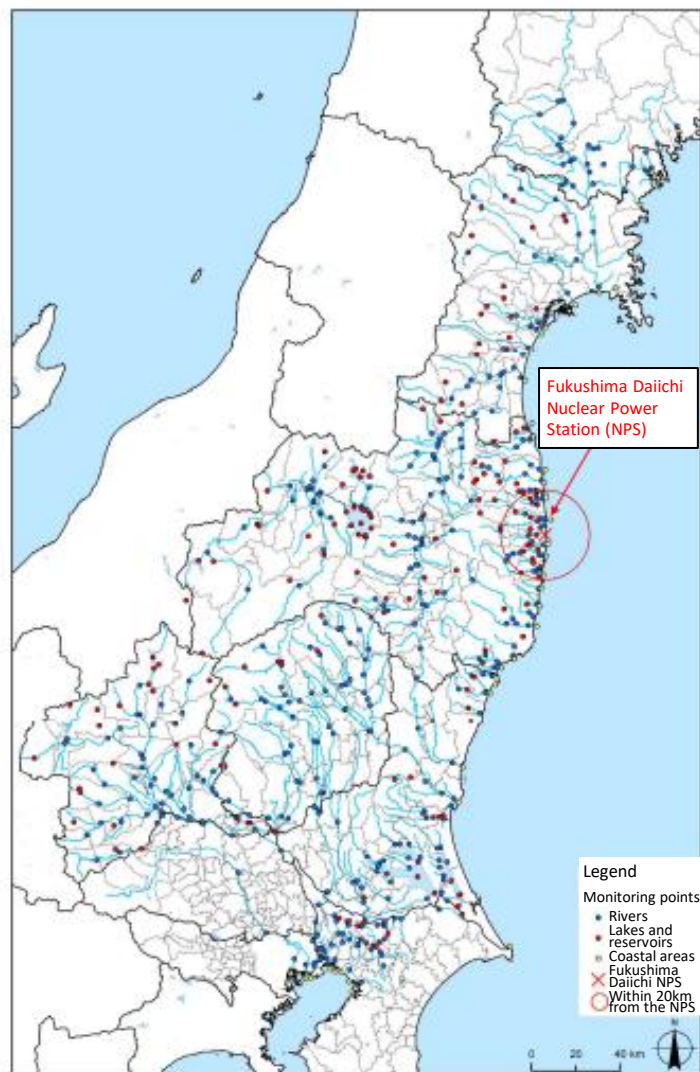


Radioactive Material Monitoring in and around Fukushima Prefecture (Public Water Areas)



[Coverage]

Whole Area of Fukushima, Miyagi, Ibaraki, Tochigi and Gunma Prefectures, and part of Iwate and Chiba Prefectures, etc.

[Monitoring points]

602 locations

[Radionuclide analyses]

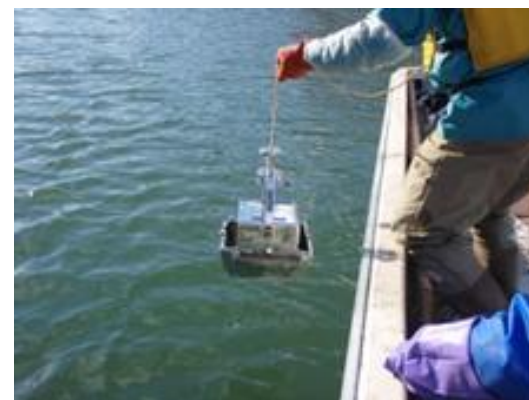
- Samples
Water, sediments and Surrounding environment (soil)
- Analyzed radionuclides
Radioactive cesium,
Radioactive strontium (only for some water and sediment samples), etc.

[Frequencies]

Twice to 10 times a year depending on the contamination status, etc.



(River: water sampling)



(Lake: sediments sampling)

Prepared based on the Results of the FY2022 Radioactive Material Monitoring in the Water Environment (Public Water Areas) (Summary) by the Ministry of the Environment

https://www.env.go.jp/jishin/monitoring/results_r-pw-r04.html (in Japanese)

Radioactive Material Monitoring in the Water Environment (River Sediments)

Distribution of Radioactive Cesium Concentrations in River Sediments (FY2022)

[Number of collected samples]

Radioactive cesium concentrations [Bq/kg(dry)]	Iwate Prefecture	Miyagi Prefecture	Fukushima Prefecture, Hamadori District	Fukushima Prefecture, Nakadori District	Fukushima Prefecture, Aizu District	Ibaraki Prefecture	Tochigi Prefecture	Gunma Prefecture	Chiba Prefecture	Saitama Prefecture	Tokyo Metropolis	Total	Percentage
Less than 1,000	80	196	305	324	164	212	278	214	199	8	8	1,988	98.9%
1,000 or more but less than 2,000	0	0	18	0	0	0	0	0	1	0	0	19	0.9%
2,000 or more but less than 3,000	0	0	3	0	0	0	0	0	0	0	0	3	0.1%
3,000 or more but less than 4,000	0	0	0	0	0	0	0	0	0	0	0	0	0.0%
4,000 or more but less than 5,000	0	0	0	0	0	0	0	0	0	0	0	0	0.0%
5,000 or more but less than 10,000	0	0	0	0	0	0	0	0	0	0	0	0	0.0%
10,000 or more	0	0	0	0	0	0	0	0	0	0	0	0	0.0%
Total	80	196	326	324	164	212	278	214	200	8	8	2,010	100.0%

Radioactive Material Monitoring in the Water Environment (Lake and Reservoir Sediments)

Distribution of Radioactive Cesium Concentrations in Lake and Reservoir Sediments (FY2022)

[Number of collected samples]

Radioactive cesium concentrations [Bq/kg(dry)]	Miyagi Prefecture	Fukushima Prefecture, Hamadori District	Fukushima Prefecture, Nakadori District	Fukushima Prefecture, Aizu District	Ibaraki Prefecture	Tochigi Prefecture	Gunma Prefecture	Chiba Prefecture	Total	Percentage
Less than 1,000	76	93	54	154	76	31	85	28	597	71.7%
1,000 or more but less than 2,000	0	40	13	11	0	1	9	4	78	9.4%
2,000 or more but less than 3,000	0	17	4	15	0	0	2	0	38	4.6%
3,000 or more but less than 4,000	0	21	6	11	0	0	0	0	38	4.6%
4,000 or more but less than 5,000	0	9	1	1	0	0	0	0	11	1.3%
5,000 or more but less than 10,000	0	28	1	2	0	0	0	0	31	3.7%
10,000 or more	0	40	0	0	0	0	0	0	40	4.8%
Total	76	248	79	194	76	32	96	32	833	100.0%

Radioactive Material Monitoring in the Water Environment (Coastal Area Sediments)

Distribution of Radioactive Cesium Concentrations in Coastal Area Sediments (FY2022)

[Number of collected samples]

Radioactive cesium concentrations [Bq/kg(dry)]	Iwate Prefecture	Miyagi Prefecture	Fukushima Prefecture	Ibaraki Prefecture	Chiba Prefecture	Tokyo Metropolis	Total	Percentage
Less than 1,000	4	52	150	20	23	18	267	100.0%
1,000 or more but less than 2,000	0	0	0	0	0	0	0	0.0%
2,000 or more but less than 3,000	0	0	0	0	0	0	0	0.0%
3,000 or more but less than 4,000	0	0	0	0	0	0	0	0.0%
4,000 or more but less than 5,000	0	0	0	0	0	0	0	0.0%
5,000 or more but less than 10,000	0	0	0	0	0	0	0	0.0%
10,000 or more	0	0	0	0	0	0	0	0.0%
Total	4	52	150	20	23	18	267	100.0%