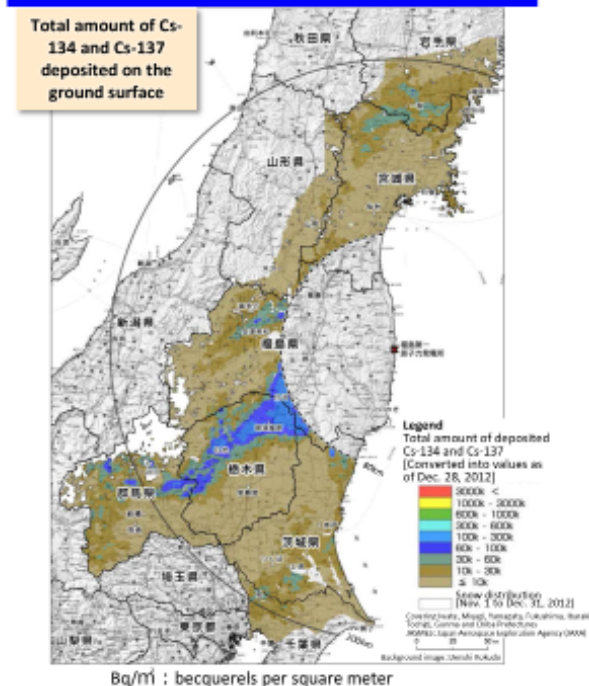


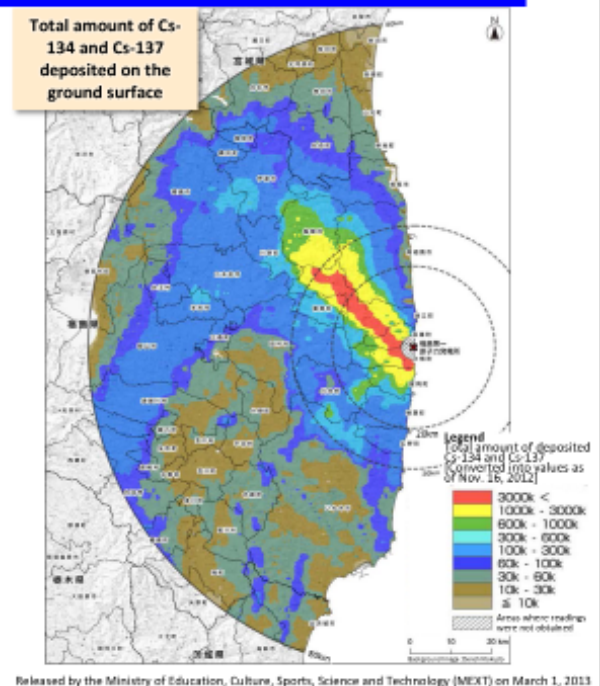
Deposition of Radioactive Cesium and Radioactive Iodine

Cs-134 and Cs-137 (Wider Areas and within the 80-km Zone)

**Readings of the Airborne Monitoring Survey outside the 80-km Zone
(Converted into values as of Dec. 28, 2012)**



**Readings of the 6th Airborne Monitoring Survey within the 80-km Zone
(Converted into values as of Nov. 16, 2012)**



These maps show deposition of radioactive cesium on the soil surface in Fukushima and neighboring prefectures based on the readings of the airborne monitoring survey.

The survey was conducted in October to December 2012 for the purpose of ascertaining the changes in the situation regarding the effect of radioactive materials including influence of rainfall or other natural environments. When creating these maps, values were all converted into those as of the last day of the relevant airborne monitoring survey, November 16, 2012, and December 28, 2012, respectively.

Included in this reference material on March 31, 2013
Updated on March 31, 2019