

# JICA Climate Change Cooperation Strategy and Support to adaptation actions in SIDS



# JICA Climate Change Cooperation Strategy

- Was adopted in September 2016;

text available at:

[https://www.jica.go.jp/english/our\\_work/climate\\_change/overview.html](https://www.jica.go.jp/english/our_work/climate_change/overview.html)

- Commits to scaling up support to climate actions in developing countries;
- Commits to promoting the transformation to a low-carbon and climate-resilient economy in developing countries with Japan's advanced innovative technologies.

# JICA Climate Change Cooperation Strategy

## Priority Issues

- (1) Promoting low-carbon and **climate-resilient urban development and infrastructure** investments
- (2) **Enhancing comprehensive climate risk management**
- (3) Support to climate policy and institutional development
- (4) Enhanced conservation and management of forests and other ecosystems

# JICA Climate Change Cooperation Strategy

## Cooperation Approach

- (1) Integrating climate actions and development
- (2) Building global partnership with diverse stakeholders
- (3) Taking the best of Japan

## Priority issue 1: Promote investments in low-carbon and climate-resilient urban development and infrastructure

Making cities and infrastructure more low-carbon and climate-resilient is critically important for both climate change mitigation & adaptation.

### What JICA will support:

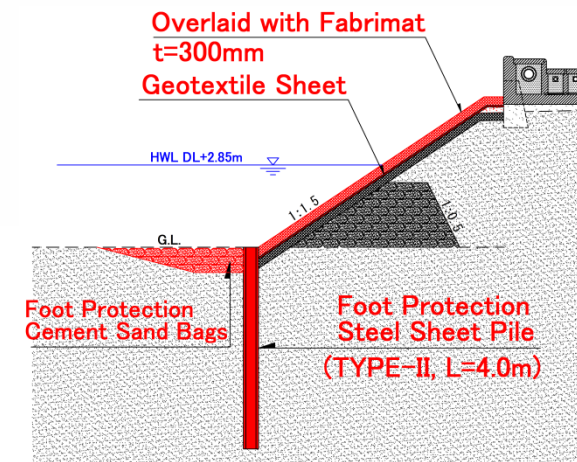
- ① More efficient use of energy (e.g. high-efficiency thermal power, reduction of electricity loss, energy saving), and adequate development and use of renewable energy
- ② Development of public transport systems
- ③ **Climate risk assessment in the planning stage of urban development and construction of infrastructure and subsequent incorporation of risk avoidance, prevention and reduction measures**

# Example of climate resilient infrastructure

# Resilient Infrastructure

## Project for reconstruction of Nippon Causeway on Tarawa to Adapt to Climate Change (Kiribati)

- The road was designed taking account of sea level rise by climate change



## Priority issue 2: Enhancing comprehensive climate risk management

With growing impacts of climate variability and change, comprehensive climate risk management is required for all development work. **Special considerations for particularly vulnerable countries (such as SIDS)** and people are taken into account.

### **What JICA will support:**

- ① Climate risk assessment/prediction, early warning, development of coping capacity and facility in preparation for prompt actions in the events of emergency
- ② Pre-investments in climate risk prevention and reduction as well as enhanced resilience of facilities/infrastructure in reconstruction (build back better)
- ③ Risk finance in preparation for materializing climate risks



# Examples of support to comprehensive climate risk management

# Samoa: Program for Improving the Weather Forecasting System and Meteorological Warning Facilities

Grant Aid

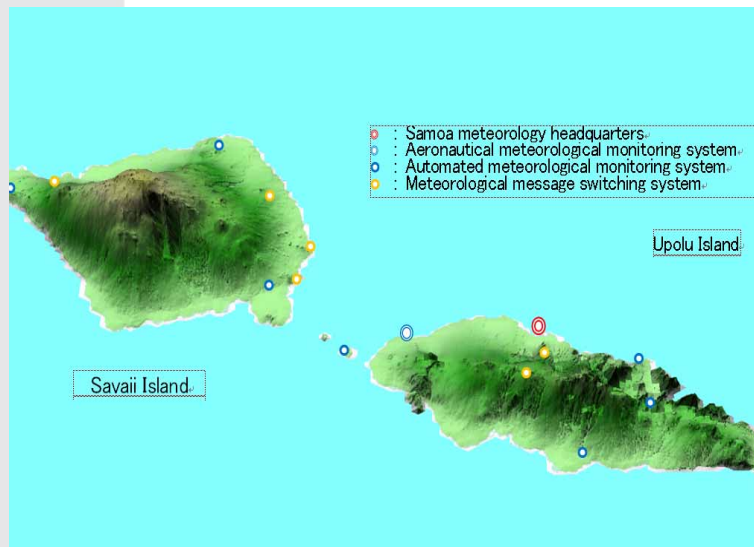
## Background and purpose:

Enhancing weather forecasting capacity and reducing vulnerability to natural disasters through improvement of hydro-met system and facilities

## “Program Grant Aid for Environment and Climate Change”

Cooperation period: 2010-2013

Grant aid offering a combination of facilities and equipment and technical support for their O&M



## Results

- Improved nation-wide meteorological monitoring system with better early warning capacity
- Improved local technical knowledge of weather forecast and global climate change

# Fiji and Solomon: Strengthening Capacity of Community Disaster Risk Management in the Pacific Region

## Background and purpose:

Fiji and Solomon have been suffering from periodical flood events. Capacities of flood prediction, early warning and evacuation had to be improved with cooperation between government and communities.

**Cooperation Period:** 2010-2013

## Results:

- (1) Flood warning system was in place in pilot sites and appropriately managed
- (2) Management capacity of National Disaster Management Office was strengthened.
- (3) Community's awareness on disaster preparedness was enhanced

## Technical Cooperation

### ➤ Disaster Risk Management at various levels

<b>Public Help</b>	National Disaster management plan, Improvement of evacuation system, Early warning system
<b>Mutual Help</b>	River bank maintenance by community, Community flood monitoring , Hazard mapping
<b>Self Help</b>	Protection of own property, Family evacuation plan, Learning disaster and risk management





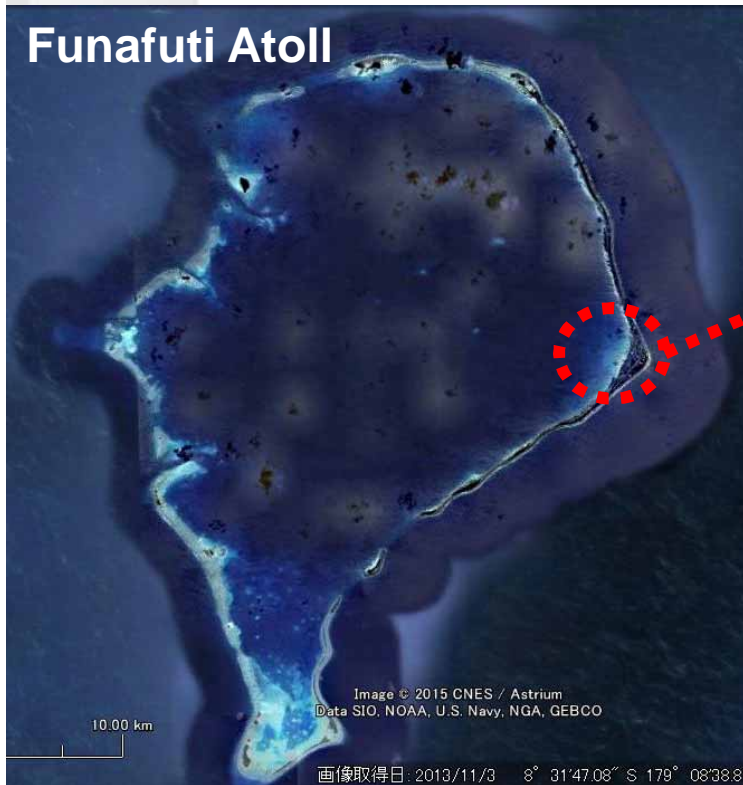


# Pilot Project for Gravel Beach Nourishment in Tuvalu (1)

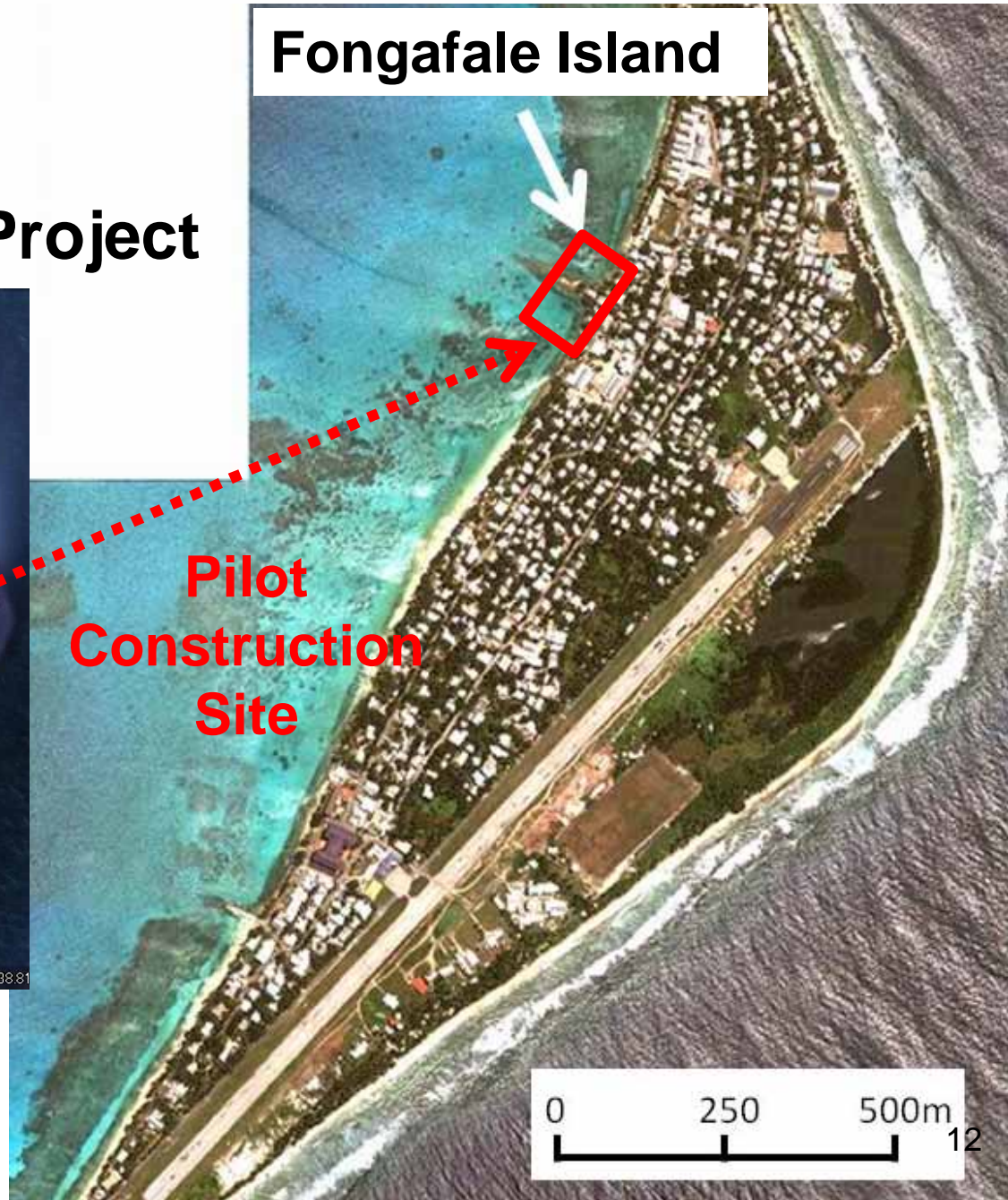
Technical Cooperation

## Location of Pilot Project

Funafuti Atoll



Fongafale Island



# Pilot Project for Gravel Beach Nourishment in Tuvalu (2) Planned Layout and Profile

