

The Present Condition of CheongGye-Cheon Restoration

CHIN, Yang Kyo

CA Landscape Design Co., Ltd.



Seoul Metropolitan Government

Index

- . History of Cheonggye-cheon**
- . Necessity of Restoration**
- . Progress in the Restoration Effort**
- . Measures for Transportation and Merchants**
- . Construction management**
- . Cheonggye-cheon 2005**

I . History of Cheonggye-cheon

I . History

• Location of Cheonggye-cheon



1

• Chosun Period

I . History

- A stream running through the center of Seoul from west to east.
- Overflowed every time by heavy rain.
- Mobilized 200,000 people to widen the stream and build stone embankments in 1760.



2

• Early 20 century

I . History



1) An integral part of the common people's lives.

2) Homeless's shelter gathered along its banks.

3

• After Liberation from Japan

I . History



1) It took 20 years to complete covering the stream.

2) Construction of Cheonggye Elevated Highway started in 1967 and was completed in 1976.

4

II. Necessity of Restoration

II.Necessity

- Needs to transform itself into a human-oriented and environment-friendly city.
- Recover its 600-year history and create cultural spaces.
- The safety of citizens to be threatened.
- Balanced regional development by revitalizing neglected city centers.

5

- Needs to transform itself into a human-oriented and environment-friendly city

II.Necessity

- Environmental protection and respect for ecology

The covering of Cheonggyecheon Stream.

Focus on functionality and efficiency.



Cheonggye-cheon Restoration.

Green city where clear waters flow.



Seoul will be re-born as a human-oriented environmental city, greatly increasing Seoul's 'brand' value.

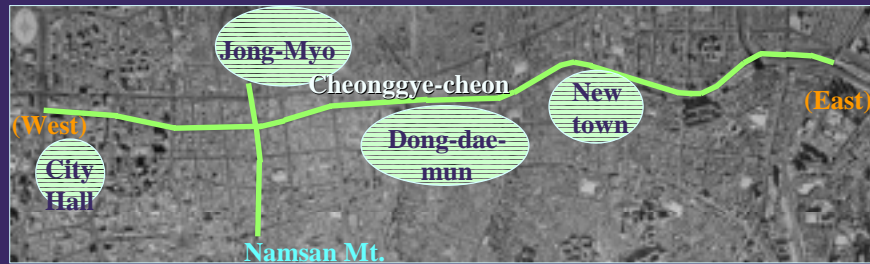
6

II.Necessity

- **Re-establish Green Network**

The basic concept is to re-establish an uninterrupted tract of green space of 5.8 kilometers running across the city from west to east,

- Total amount of green : 276,650 m²



<Green Network>

7

II.Necessity

- **Create green and pedestrian network**



Wind road → Temperature falls about 1.

8

- Recovering its 600-year history and create cultural spaces



Recovers these artifacts of historic heritage.
Explores its cultural resources.



A cultural city for all citizens to share and enjoy.

- **Balanced regional development**

The neighboring areas to be revitalized



To realize their growth potential



Attracting important industries such as international financing, the cultural industry, and the fashion and tourism industry



An international center of finance and business in Northeast Asia

III . Progress in the Restoration Effort

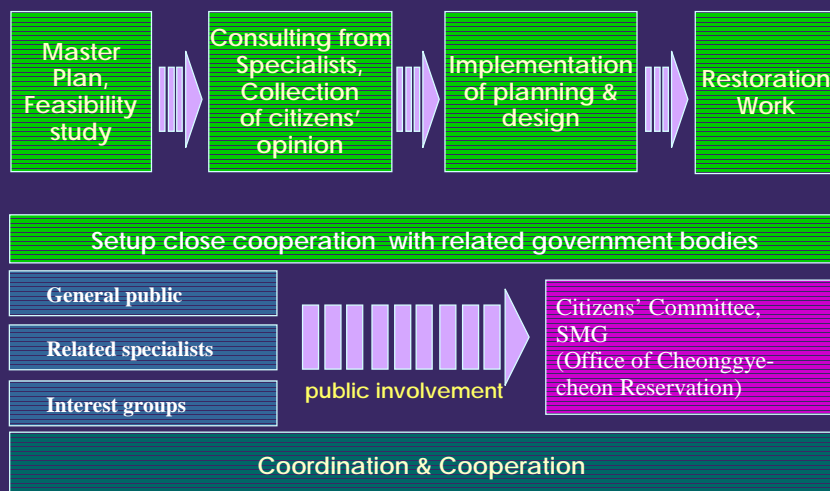
. Progress

- Implementation process
- System
- Details
- Budget
- Time schedule

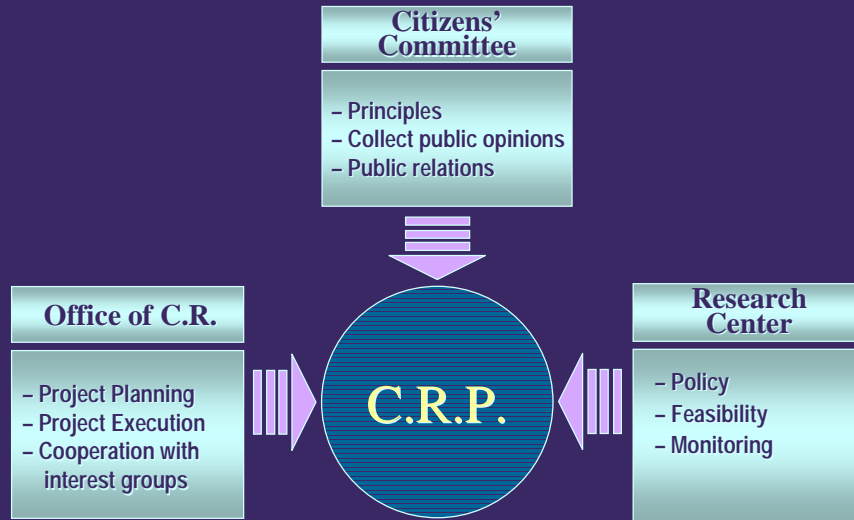
13

○ Implementation process

. Progress



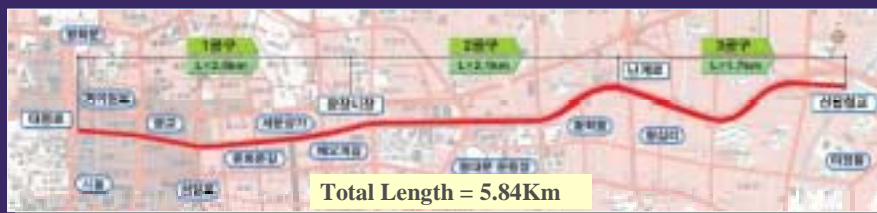
14



• Details

● Sections of Cheonggyecheon stream to be recovered

Sector 1 (L=2.04km)	Sector 2 (L=2.1km)	Sector 3 (L=1.7km)
---------------------	--------------------	--------------------



Built facilities to restore Cheonggyecheon Stream, including the sewage system, road, bridges, landscaping and lighting as the master plan to dismantle the structures covering the Cheonggyecheon Stream.

Divided the entire section into three construction sectors, considering the construction work within the inner city.

- Dismantling the structures



Used diamond wire saws and wheel saws, the most advanced technologies available in order to minimize noise, dust and other pollutions generated from dismantling.

17

- Water sources for the Cheonggyecheon



- The water for Cheonggyecheon to be supplied at four locations.(120,000 tons/day)

- The average water depth : 40 .

18

- Sectional view of Cheonggye-cheon

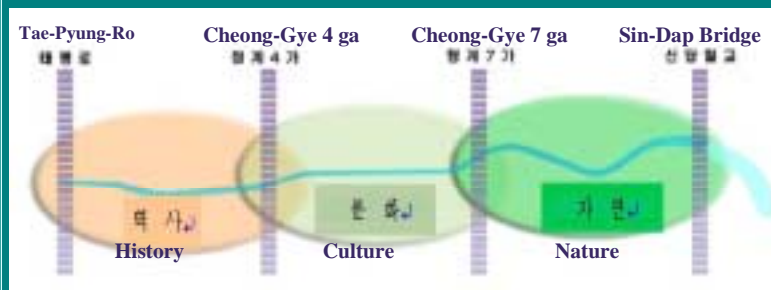


The sewer system to be designed to treat a total of 1.95 million tons a day, three times the maximum sewage.

- Basic Concept of restoration of ecosystem

Basic concept

- Re-establish an uninterrupted tract of green space from west to east
- Guarantee the movable passage of animals
- Increase the environment-friendly urban space with a waterfront and walks along the banks
- Increase total amount of green space



● A principal scenery of restoration

1 Cheong-Gye Madang



2 Cheong-Gye Neren-Madang



3 Su-Pyo_Gyo



4 Pattern watersides



5 Pal-Rae-Ter



6 The walls of participation



7 Ha-Nul-Mul-Ter



8 Willow Marsh



Budget

. Progress

Total Project Cost : 305 million dollar (U.S)

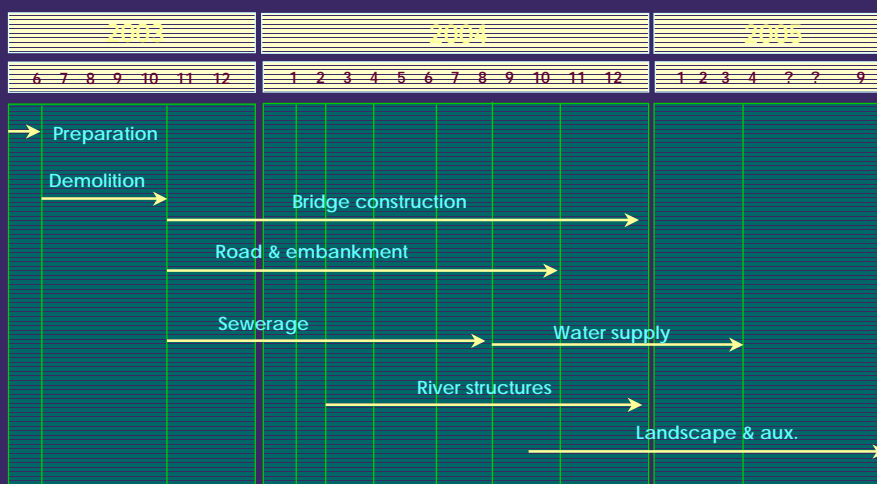
- Design : 1.7
- Construction : 294.0
- Land acquisition : 2.3
- Project management : 6.1
- Admin. : 0.5

All budget is from Seoul Metropolitan Government

20

Time schedule

. Progress



21

. Measures for transportation and merchants

• Measures for transportation



- **Measures for motorists using Cheonggye Elevated Highway**
 - Encouraged the car owners to leave cars at home one out of every 7 days.
 - Expanded the variable lane system and designated the selected lanes for motorists.
 - Encouraged detours for motorists entering the center of Seoul.

23

- **Increased the transportation capacity of buses and subways to encourage citizens to use public transportation instead of their own cars**

- Increased the transportation capacity of the subway.
- Designated bus-only lanes.
- Designated Shuttle bus service.

- **Control of downtown area traffic**

- Continue to crackdown on illegal parking.
- Raised downtown parking fee and staged a new PR campaign on public transportation.

24

. Measures for transportation and merchants

- Measures for transportation
- Measures for merchants

22

. Measures

- **Traffic measures for visitors to Cheonggyecheon stores**
 - Opened two lanes on each side of the Cheonggyecheon to freight vehicles and designated road space for loading and unloading.
 - Allotted parking spaces for Cheonggyecheon store customers in the Dongdaemun Stadium Parking lot.
- **Measures for citizens visiting Cheonggyecheon**
 - Revised existing bus routes.
 - Offered free shuttle bus service.

25

• Measures for neighboring merchants

. Measures



- **To collect opinions of merchants on the impact of business**
 - Held public hearings and presentation sessions for each commercial block.
 - It helped to organize the Cheonggyecheon Residents and Merchants Council and the Merchants Association.
 - The most advanced engineering technology was employed to minimize noise and dust.

26

. Measures

- **To further stimulate business activity in the district**
 - Reduced the parking fees.
 - Promoting Cheonggyecheon stores by various means including advertising on electronic billboards on the streets, newspapers, hanging banners, and PR leaflets.
 - Giving priority to Cheonggyecheon stores when procuring supplies for Seoul Metropolitan Government and local district governments.
- **Providing financial support and subsidies to merchants**
 - Provided low-interest loans to small business operators suffering poor sales during the project.
 - Provided grants for the remodeling of existing markets, covering 80% of the costs for improving the business environment.

27

- **Measures for leaving**

The city government is planning to create a special business section for businesses that intend to leave Cheonggyecheon to ensure that the nationwide business network continues to function in an uninterrupted manner.

- **Various measures so that the neighborhood of Cheonggyecheon can be developed in systematic and efficient way in the long term**

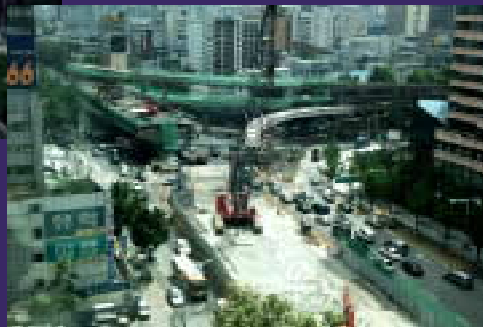
- Formulated plans to develop downtown and unit sections.
- The downtown redevelopment project for the neighborhood.

. . Construction management



Elevated roads (Before 2003. 7)

Under demolition (2003. 7 ~ 2003.10)



. . Construction management

. Construction



**The view of upper stream(Sector 1)
the progress of construction : 70.80%**

30

. Construction



**The view of mid-stream(Sector 2)
the progress of construction : 74.98%**

31



**The view of downstream(Sector 3)
the progress of construction : 76.70 %**

32

■ A sample of construction



Construction of Slope wall



. Cheonggyecheon 2005



Restoration of Cheonggyecheon



Development of neighbor areas



Balanced development of the northern and southern parts of the city



Seoul will be a hub of northeast asia



Thank You