

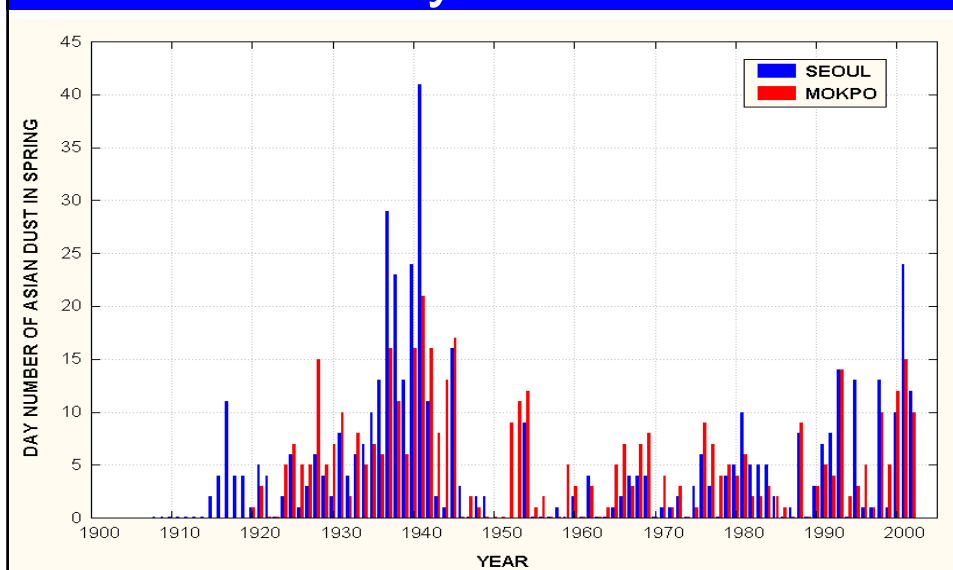
Status Quo and Control of Asian Dust in Korea

November 24, Toyama

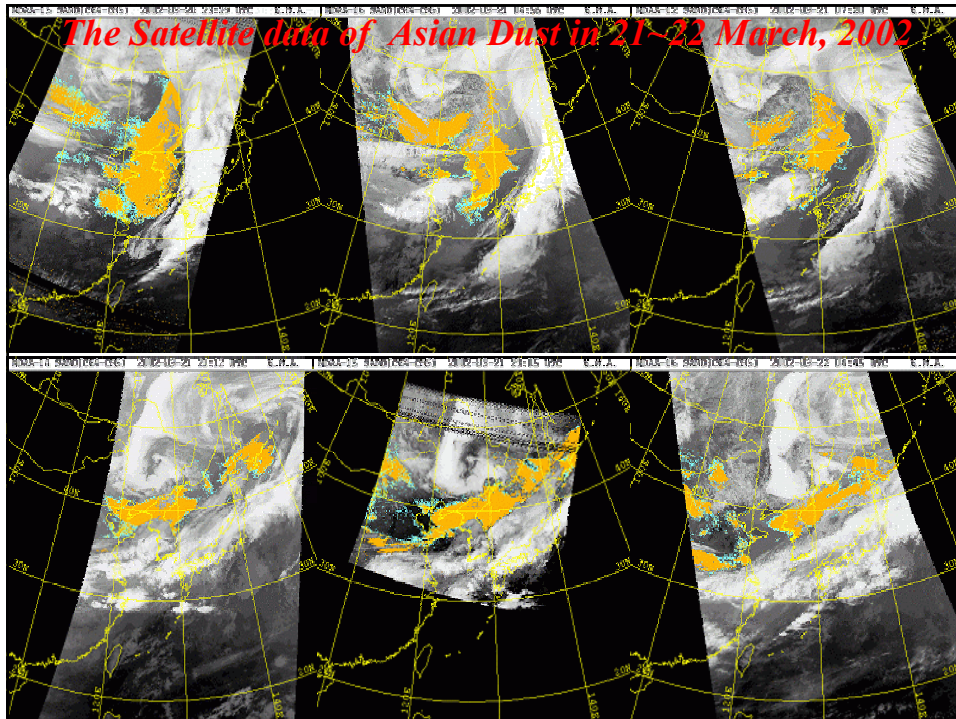
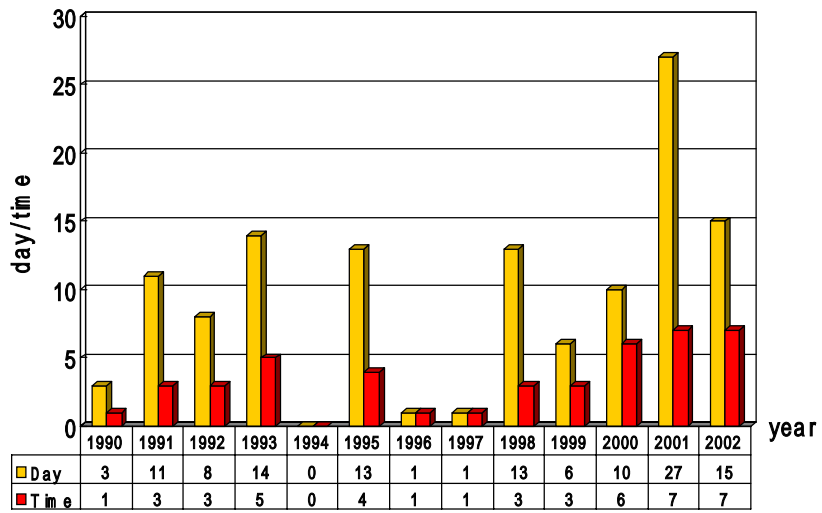
CHU, Jang Min

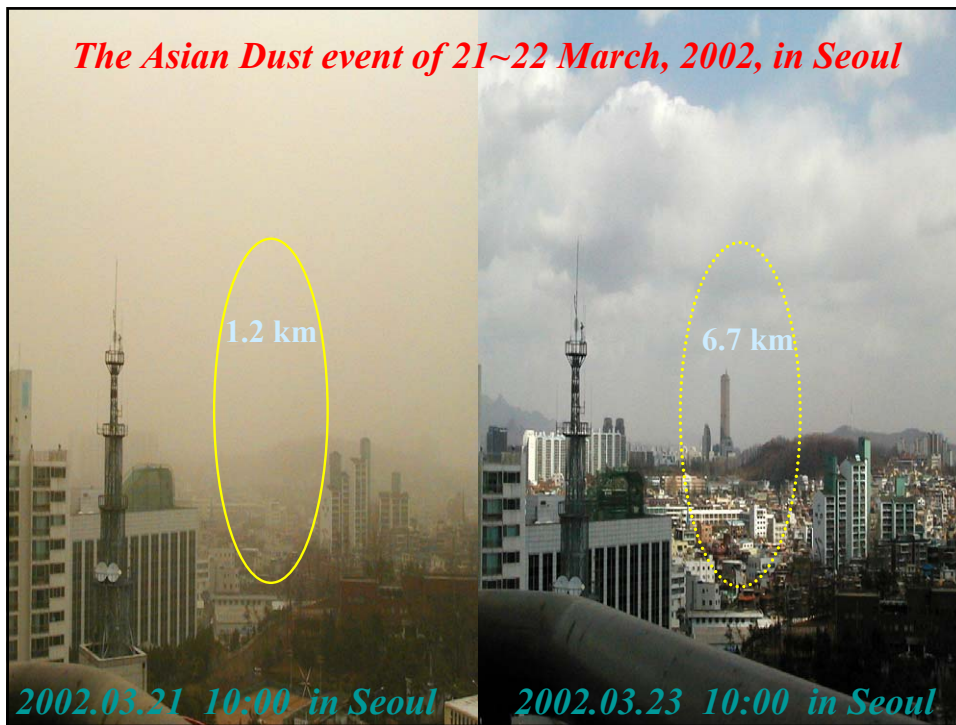
Korea Environment Institute

Day Number of Asian Dust of 20th Century in Korea

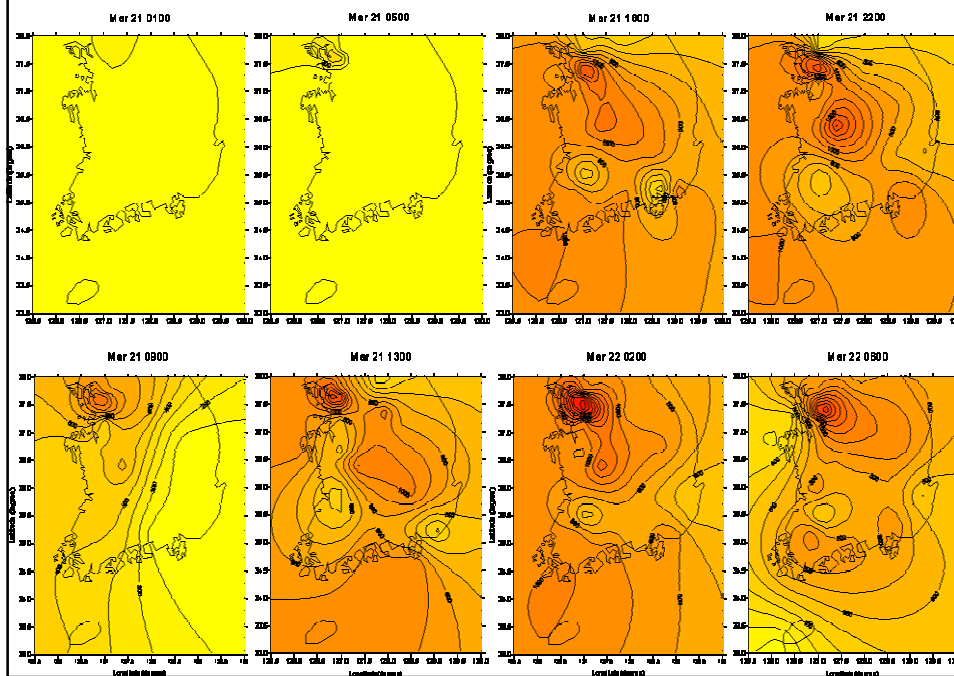


Day/Time Number of Asian dust in Seoul (1990-2002)





PM10 Concentration of Asian Dust event of Korea in 21~22 March, 2002



Impacts and Damages of Asian Dust in Korea

- ◆ PM10 concentration increased about 2-10 times in Asian dust events than Non-Asian dust period;
- ◆ People were received harmful impacts to their health;
- ◆ 102 scheduled flights were cancelled by decline of visibility in 2002;
- ◆ 4949 education bodies (kindergartens, primary and high schools) were stopped in 2002;
- ◆ High - tech industries were received damage by dust;
- ◆ Agriculture production was reduced

Countermeasures for Control Asian Dust in Korea

- ☞ Establishment of Asian Dust phenomena data base
- ☞ Set up cooperation system between Minister of Environment (MOE) and Korea Metrological Agency (KMA)
- ☞ Strength monitoring and early warning of Asian Dust
- ☞ Implementation integrated forecasting and early warning system
- ☞ Establishment 5 monitoring sites in China through cooperation between Korea and China, and exchange monitoring data in real time from next spring
- ☞ Implementation afforestation projects of MOE in China
- ☞ Attendance ADB-GEF program to establish a regional monitoring and early warning system for DSS in NEA

Asian Dust Early Warning System in Korea



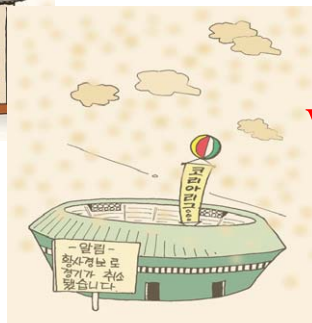
Watch

$300 \mu\text{g}/\text{m}^3$



Advisory

$500 \mu\text{g}/\text{m}^3$



Warning

$1,000 \mu\text{g}/\text{m}^3$

