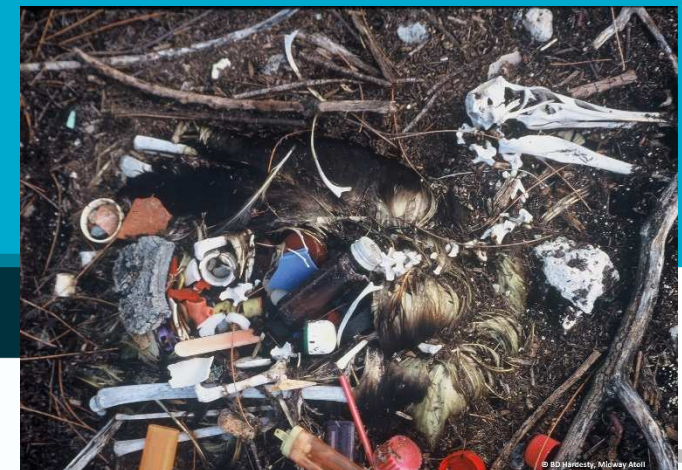




# Risk Analysis for Marine Debris Impacts on Wildlife

Britta Denise Hardesty and Chris Wilcox  
Saturday 23 January 2016

• OCEANS AND ATMOSPHERE  
[www.csiro.au](http://www.csiro.au)



# Roadmap

Overview of Australia's national MD program

Risk Analysis

Approaches we are taking to:

*Understand exposure*

1a. Seabirds & ingestion

2b. Turtles & entanglement (won't show)



*Translate exposure into impact*

2a. Measuring fitness effects on seabirds

2b. Expert elicitation and waste



# Where does it come from?

- Beachgoers
- Storm sewers
- Commercial & recreations vessels
- Industrial facilities
- Landfill
- Waste disposal activities
- Offshore industrial activities

## *Land and Sea based sources*



*It's everywhere, all the time, increasing*

# How much is there?



## TOP 10 DEBRIS ITEMS

Item	20 Year Total
Cigarettes and Cigarette Filters	12,848,255
Caps/Lids	4,186,593
Cups/Plates/Utensils	3,575,209
Bags	3,346,666
Food Wrappers and Containers	3,318,729
Beverage Bottles (Glass)	2,329,142
Beverage Cans	2,293,559
Beverage Bottles (Plastic)	1,965,210
Straws/Stirrers	1,960,122
Rope	925,301
<b>Total</b>	<b>36,748,786</b>

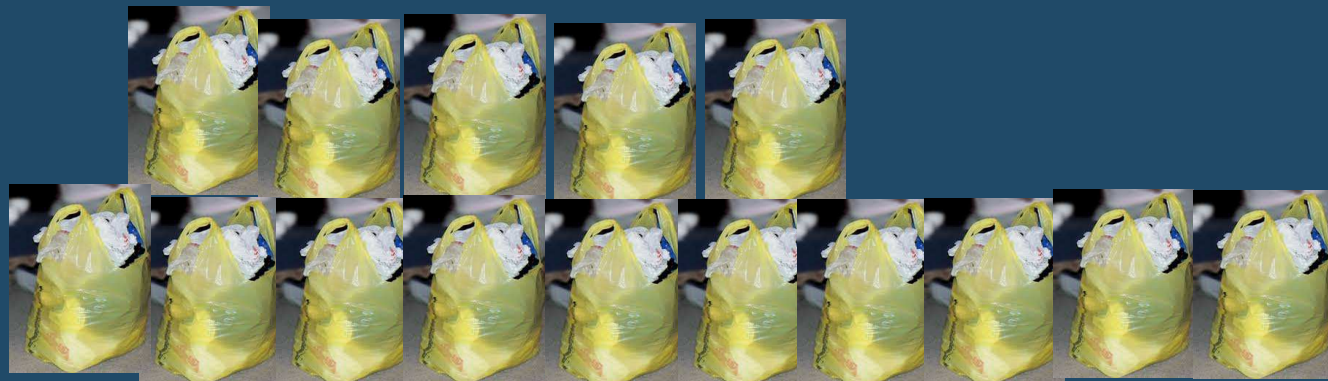
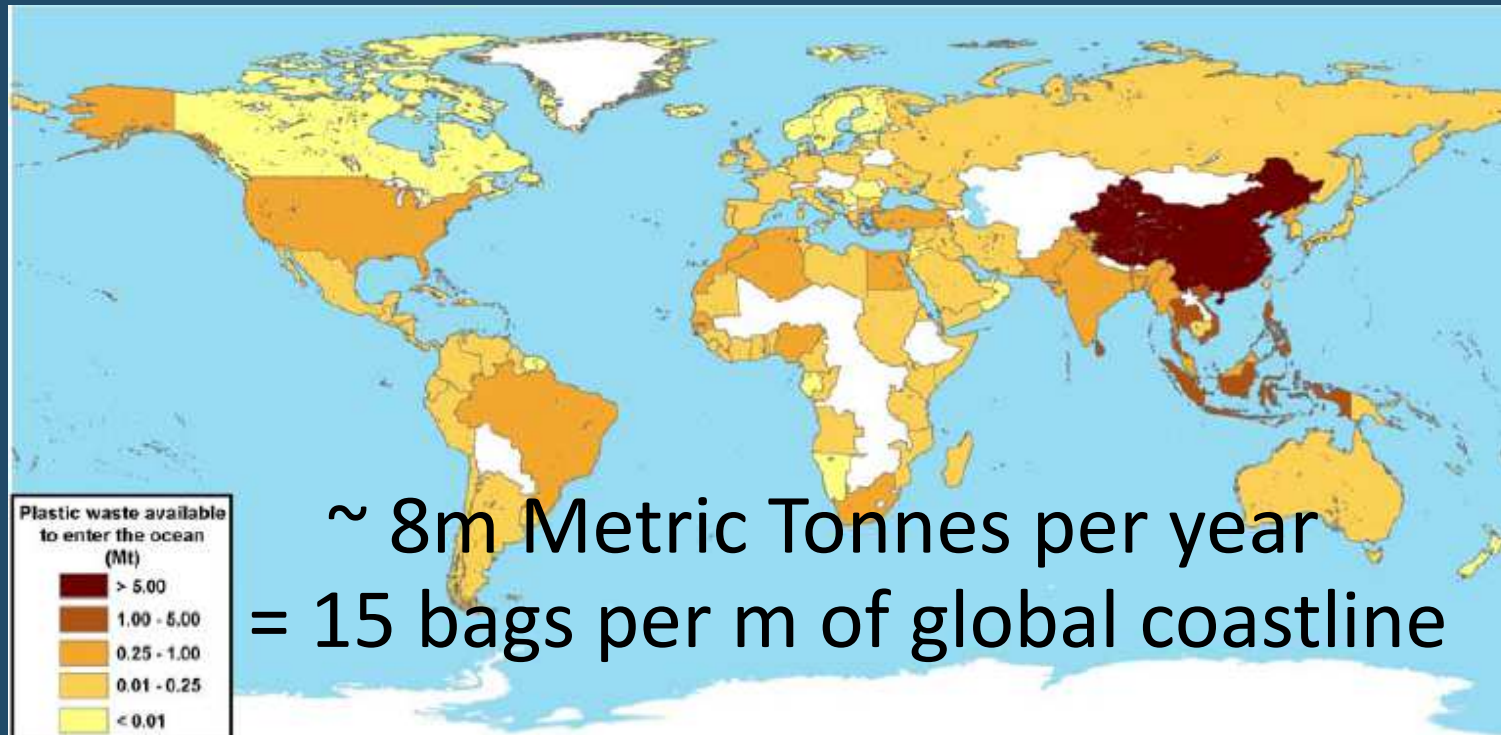
Source: [www.oceanconservancy.org/ICC](http://www.oceanconservancy.org/ICC)

~ 8.4 M metric tonnes goes in per year

~ 51 trillion particles in the ocean

~ 115M pieces on Au Coast – 5.2 per person!

# Plastic entering the oceans

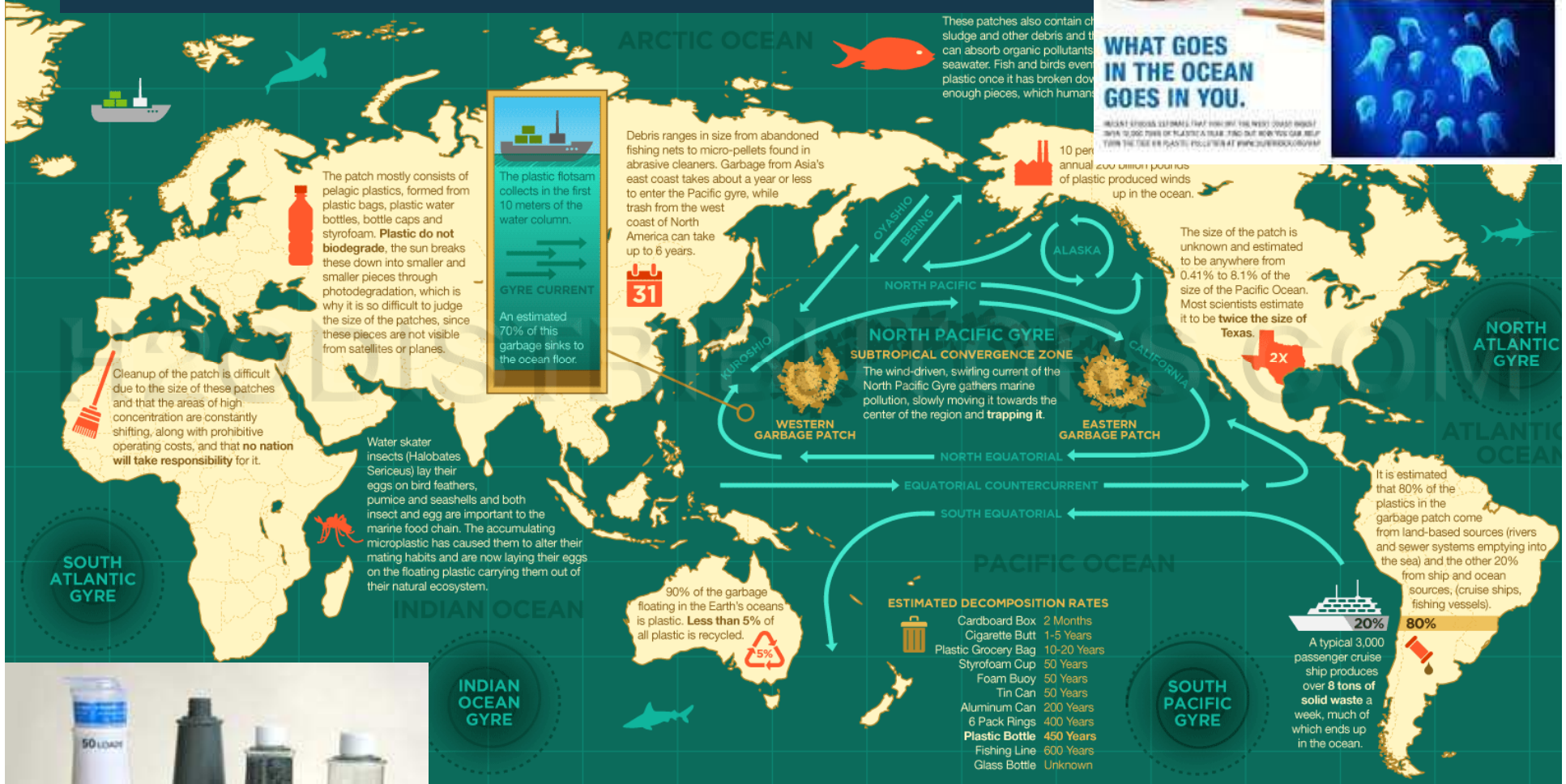


# How does it move?



**WHAT GOES IN THE OCEAN GOES IN YOU.**

RECENT STUDIES REVEAL THAT THROUGH THE WEST COAST WINDS 10,000 TONS OF PLASTIC TRASH FIND OUT WAY TO OCEAN EACH YEAR. TURN THE TIDE ON PLASTIC POLLUTION AT WWW.CSIRO.GOV.AU



Copyright © h2odistributors.co

