

FY2019 Saitama Prefecture Survey Results

[Outline of results]

(1) Water

Rivers

Radioactive cesium (Cs-134, Cs-137): Not detectable at any location

(2) Sediments

Rivers

Cs-134: Not detectable at any location

Cs-137: 5.3 - 26 Bq/kg (dry)

(3) Surrounding Environment

(a) Soil

Rivers

Cs-134: ND - 19 Bq/kg (dry)

Cs-137: 9.9 - 210 Bq/kg (dry)

(b) Ambient dose rate

Rivers

0.04 - 0.06 μ Sv/h

Saitama River (Water) 1/1

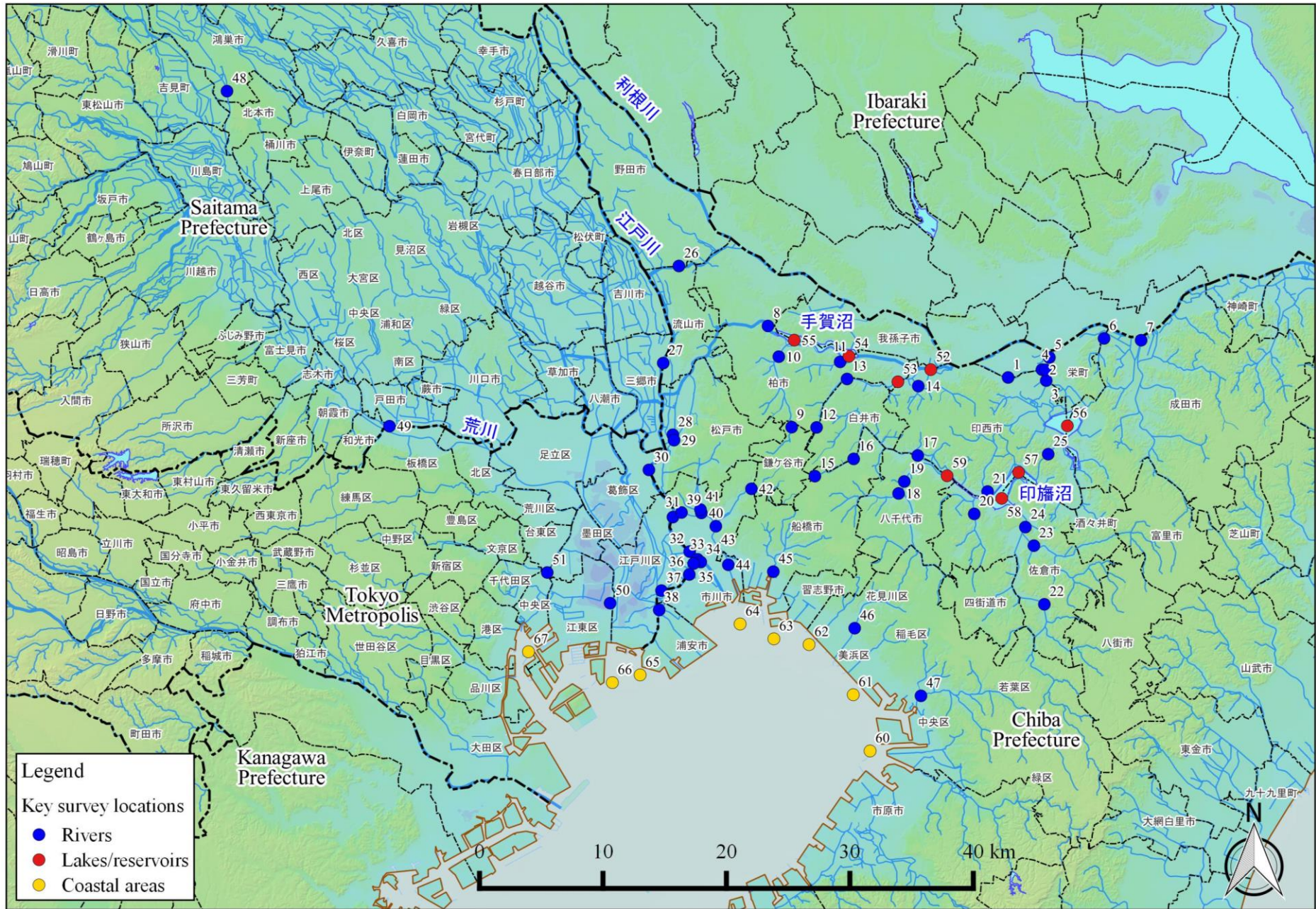
R i v e r s	Location				Sampling Date	Weather	Air temperature (°C)	Water depth (m)	Water										Remarks
	No.	Water area	Location	Municipality					General items							Activity concentration(Bq/L)			
									Water temperature (°C)	Sampling depth (m)	Color	Odor	Transparency (cm)	Electrical conductivity (mS/m)	SS (mg/L)	Turbidity (FNU)	Radioactive cesium Cs-134	Radioactive cesium Cs-137	
48	Arakawa River System	Arakawa River Middle Reaches	Takimamuro Bridge	Konosu City	2019/5/28	Cloudy	31.1	2.4	20.5	0.0	Grayish yellow green	None	52	15.2	10	5.1	<0.51	<0.86	
					2019/8/22	Cloudy	29.2	2.2	24.4	0.0	Grayish yellow	None	31	18.1	47	16	<0.70	<0.89	
					2019/11/25	Sunny	20.9	2.7	15.3	0.0	Grayish yellow green	None	36	19.8	42	11	<0.82	<0.66	
					2020/1/22	Cloudy	6.5	2.4	6.4	0.0	Dark grayish yellow green	None	83	26.3	5	2.0	<0.71	<0.91	
	49	Arakawa River System	Arakawa River Lower Reaches	Sasame Bridge	Toda City	2019/5/28	Cloudy	26.8	0.3	23.9	0.0	Dark grayish yellow	None	40	46.6	9	4.2	<0.89	<0.67
						2019/8/22	Cloudy	29.5	0.3	25.8	0.0	Grayish greenish yellow	None	33	21.1	20	12	<0.82	<0.67
						2019/11/25	Sunny	18.0	0.2	16.0	0.0	Grayish yellow green	None	27	28.4	34	10	<0.82	<0.55
						2020/1/22	Cloudy	4.8	0.3	12.7	0.0	Grayish yellow green	None	57	215	17	11	<0.90	<0.66

Saitama River (Sediment) 1/1

R i v e r s	Location				Sampling Date	Weather	Air temperature (°C)	Water depth (m)	Sediment																Remarks							
	No.	Water area	Location	Municipality					Sediment temperature (°C)	Sample length (cm)	Color	Odor	General items								Sediment content (%)	Density (g/cm ³)	Property	Activity concentration [Bq/kg(dry)]								
													Grain size distribution(%)											Coarse sand		Medium sand	Fine sand	Silt	Clay	Radioactive cesium		
													Coarse gravel	Medium gravel	Fine gravel	Coarse sand	Medium sand	Fine sand	Silt	Clay										Cs-134	Cs-137	Total
48	Arakawa River System	Arakawa River Middle Reaches	Takimuro Bridge	Konosu City	2019/5/28	Cloudy	31.1	2.4	20.1	4	Blackish brown	None	0.0	0.1	0.2	0.2	30.6	60.7	2.4	5.8	69.7	2.698	Silt	<3.6	9.5	9.5						
					2019/8/22	Cloudy	29.2	2.2	24.0	2	Blackish brown	Faint algae	0.0	3.1	8.7	6.4	33.5	42.5	2.9	3.0	75.8	2.678	Sand/gravel	<4.9	5.3	5.3						
					2019/11/25	Sunny	20.9	2.7	14.7	3	Blackish brown	None	0.0	0.0	0.0	0.4	20.2	76.3	0.1	3.0	71.1	2.718	Sand	<3.7	5.9	5.9						
					2020/1/22	Cloudy	6.5	2.4	7.5	2	Blackish brown	None	0.0	0.0	0.7	2.2	53.1	36.7	3.4	3.9	76.2	2.717	Sand	<7.3	9.0	9.0						
	49	Arakawa River Lower Reaches	Ssane Bridge	Toda City	2019/5/28	Cloudy	26.8	0.3	24.2	2	Dark olive brown	None	0.0	13.3	2.6	2.7	25.7	25.4	23.0	7.4	65.3	2.696	Silt/sand/gravel	<4.1	14	14						
					2019/8/22	Cloudy	29.5	0.3	24.8	1	Blackish brown	None	0.0	9.8	4.8	5.0	27.4	37.2	7.7	8.3	75.8	2.708	Sand/silt/gravel	<5.3	15	15						
					2019/11/25	Sunny	18.0	0.2	15.8	1	Blackish brown	None	13.8	17.9	3.5	2.0	9.9	18.6	21.0	13.4	63.5	2.607	Sand/silt	<7.4	26	26						
					2020/1/22	Cloudy	4.8	0.3	10.8	1	Blackish brown	None	13.4	44.2	5.9	2.7	8.9	10.9	8.7	5.4	64.6	2.714	Gravel/sand/silt	<4.4	15	15						

Saitama River (Surrounding Environment) 1/1

Location					Sampling Date	Weather	Air temperature (°C)	Surrounding Environment(Soil,Air dose)												Remarks	
								Left bank						Right bank							
No.	Water area		Location	Municipality				Color	Odor	Property	Activity concentration [Bq/kg(dry)]			Air Dose (μSv/h)	Color	Odor	Property	Activity concentration [Bq/kg(dry)]			Air Dose (μSv/h)
											Radioactive cesium							Radioactive cesium			
											Cs-134	Cs-137	Total					Cs-134	Cs-137	Total	
R i v e r s	48	Arakawa River Middle Reaches	Takimamuro Bridge	Konosu City	2019/5/28	Cloudy	31.1	Grayish yellowish brown	Faint earth	Loamy	<9.1	38	38	0.06	Grayish yellowish brown	Faint earth	Loamy	<7.2	18	18	0.06
					2019/8/22	Cloudy	29.2	Grayish yellowish brown	Faint earth	Loamy	<6.9	27	27	0.06	Grayish yellowish brown	Faint earth	Loamy	<7.5	24	24	0.06
					2019/11/25	Sunny	20.9	Blackish brown	Faint earth	Loamy	<6.7	18	18	0.06	Blackish brown	Faint earth	Loamy	<6.0	14	14	0.06
					2020/1/22	Cloudy	6.5	Grayish yellowish brown	Faint earth	Loamy	<8.9	27	27	0.05	Dark grayish yellow	Faint earth	Sandy	<9.1	10	10	0.05
	49	Arakawa River Lower Reaches	Sasame Bridge	Toda City	2019/5/28	Cloudy	26.8	Dark brown	Faint earth	Loamy	16	210	226	0.04	Blackish brown	Faint earth	Loamy	8.6	100	108.6	0.05
					2019/8/22	Cloudy	29.5	Dark brown	Faint earth	Loamy	19	190	209	0.04	Blackish brown	Faint earth	Loamy	10	100	110	0.05
					2019/11/25	Sunny	18.0	Dark brown	Faint earth	Loamy	14	180	194	0.04	Blackish brown	Faint earth	Loamy	<6.8	9.9	9.9	0.05
					2020/1/22	Cloudy	4.8	Dark brown	Faint earth	Loamy	<10	170	170	0.04	Blackish brown	Faint earth	Sandy	<7.0	20	20	0.04



Survey Locations (Chiba,Saitama,Tokyo Prefectures)