

## FY2019 Chiba Prefecture Survey Results

[Outline of results]

### (1) Water

#### Rivers

Radioactive cesium (Cs-134, Cs-137): Not detectable at any location

#### Lakes and reservoirs

Radioactive cesium (Cs-134, Cs-137): Not detectable at any location

#### Coastal areas

Radioactive cesium (Cs-134, Cs-137): Not detectable at any location

### (2) Sediments

#### Rivers

Cs-134: ND - 130 Bq/kg (dry)

Cs-137: 4.2 - 1,700 Bq/kg (dry)

#### Lakes and reservoirs

Cs-134: ND - 170 Bq/kg (dry)

Cs-137: 41 - 2,100 Bq/kg (dry)

#### Coastal areas

Cs-134: ND - 1.4 Bq/kg (dry)

Cs-137: ND - 120 Bq/kg (dry)

### (3) Surrounding Environment

#### (a) Soil

##### Rivers

Cs-134: ND - 280 Bq/kg (dry)

Cs-137: 12 - 3,900 Bq/kg (dry)

##### Lakes and reservoirs

Cs-134: 16 - 440 Bq/kg (dry)

Cs-137: 290 - 5,600 Bq/kg (dry)

#### (b) Ambient dose rate

##### Rivers

0.04 - 0.10  $\mu$ Sv/h

##### Lakes and reservoirs

0.05 - 0.09  $\mu$ Sv/h

# Chiba River (Water)1/4

No.	Location				Sampling Date	Weather	Air temperature (°C)	Water depth (m)	Water												Remarks
	Water area	Location	Municipality	General items							Activity concentration(Bq/L)										
				Water temperature (°C)					Sampling depth (m)	Color	Odor	Transparency (cm)	Electrical conductivity (mS/m)	SS (mg/L)	Turbidity (FNU)	Radioactive cesium					
										Cs-134	Cs-137										
1	Shogen River	Fukama-ohashi Bridge	Inzai City /Sakae Town	2019/5/30	Sunny	33.0	1.4	25.9	0.0	Dark grayish greenish yellow	None	22	30.1	10	9.9	<-0.81	<-0.80				
				2019/8/16	Cloudy	29.3	2.0	29.6	0.0	Dark grayish yellow	None	24	29.8	15	7.8	<-0.82	<-0.90				
				2019/11/7	Sunny	18.0	1.6	16.0	0.0	Grayish yellow	None	29	23.5	12	6.2	<-0.46	<-0.54				
		2020/1/21		Sunny	10.9	1.7	7.9	0.0	Light grayish yellow	None	38	33.5	10	5.4	<-0.75	<-0.61					
		2019/5/30		Sunny	22.6	1.5	23.5	0.0	Dark grayish greenish yellow	None	20	24.2	24	15	<-0.63	<-0.74					
		2019/8/16		Cloudy	28.0	0.2	28.6	0.0	Grayish yellow	None	25	24.4	24	9.8	<-0.88	<-0.67					
2	Nagato River	Intake at Maeshinden Water Purification Plant	Sakae Town	2019/11/7	Sunny	14.8	2.4	16.2	0.0	Light grayish yellow	None	26	24.2	28	12	<-0.75	<-0.66				
				2020/1/20	Sunny	14.3	1.5	8.7	0.0	Light grayish yellow	None	20	53.7	23	14	<-0.61	<-0.89				
				2019/5/16	Sunny	25.5	0.6	21.2	0.0	Dark grayish greenish yellow	Faint sewage	30	23.1	15	11	<-0.89	<-0.67				
		2019/8/21		Sunny	29.3	0.8	29.1	0.0	Grayish greenish yellow	None	25	18.1	15	11	<-0.74	<-0.80					
		2019/11/6		Sunny	24.0	0.5	18.0	0.0	Grayish yellow	None	20	19.8	38	18	<-0.90	<-0.61					
		2020/1/21		Sunny	7.5	0.4	7.4	0.0	Light grayish yellow	None	20	34.7	21	13	<-0.70	<-0.70					
3	Nagato River	Nagato Bridge	Sakae Town	2019/5/16	Sunny	24.2	0.2	22.2	0.0	Grayish yellow green	None	34	23.3	12	7.4	<-0.69	<-0.74				
				2019/8/21	Sunny	29.5	2.2	27.3	0.0	Light grayish yellow	None	40	19.5	20	10	<-0.81	<-0.85				
				2019/11/6	Sunny	14.3	0.3	17.6	0.0	Grayish yellow	None	19	20.2	33	13	<-0.61	<-0.54				
		2020/1/20		Sunny	11.8	0.3	9.7	0.0	Light grayish greenish yellow	None	22	46.8	20	11	<-0.67	<-0.91					
		2019/5/16		Sunny	23.9	0.5	21.1	0.0	Dark grayish greenish yellow	None	30	23.7	11	10	<-0.73	<-0.74					
		2019/8/21		Sunny	25.2	1.2	26.6	0.0	Grayish yellow	None	31	19.4	17	9.1	<-0.73	<-0.90					
4	Nagato River	Fujimi Bridge	Sakae Town	2019/11/6	Sunny	19.2	1.7	16.1	0.0	Light grayish greenish yellow	None	24	38.0	29	14	<-0.88	<-0.54				
				2020/1/20	Sunny	13.5	1.3	9.0	0.0	Light grayish greenish yellow	None	20	34.2	20	9.6	<-0.75	<-0.78				
				2019/5/16	Cloudy	28.2	0.1	24.2	0.0	Reddish yellowish gray	Faint sewage	22	55.0	34	17	<-0.69	<-0.80				
		2019/8/21		Sunny	29.5	0.5	23.9	0.0	Grayish yellow	None	45	52.8	15	11	<-0.70	<-0.67					
		2019/11/6		Sunny	16.0	0.2	15.5	0.0	Light grayish yellow green	None	77	78.3	13	7.3	<-0.78	<-0.75					
		2020/1/20		Sunny	10.0	0.2	9.1	0.0	Yellowish dark gray	None	50	99.6	16	11	<-0.81	<-0.92					
5	Ryudai River	Ryumatsuno Bridge	Narita City	2019/5/16	Sunny	22.8	0.4	21.3	0.0	Grayish yellow green	None	29	57.0	13	10	<-0.67	<-0.80				
				2019/8/21	Sunny	31.2	0.5	29.1	0.0	Grayish yellow	None	31	62.1	16	12	<-0.59	<-0.89				
				2019/11/6	Sunny	15.8	0.8	16.9	0.0	Light grayish yellow	None	37	81.0	18	13	<-0.83	<-0.71				
		2020/1/20		Sunny	9.1	0.6	9.3	0.0	Light grayish greenish yellow	None	50	47.1	9	6.7	<-0.78	<-0.70					
		2019/5/27		Sunny	33.0	0.3	24.6	0.0	Dark grayish yellow green	None	55	27.3	14	2.5	<-0.75	<-0.74					
		2019/8/20		Cloudy	27.5	0.3	26.3	0.0	Grayish greenish yellow	None	88	28.7	10	5.3	<-0.88	<-0.67					
6	Ohori River	Kitaakashiwa Bridge	Kashiwa City	2019/11/7	Cloudy	22.0	0.3	18.1	0.0	Grayish yellow	None	96	31.9	6	2.3	<-0.63	<-0.61				
				2020/1/26	Cloudy	8.0	0.4	9.0	0.0	Grayish yellow green	Faint sewage	64	37.0	4	2.8	<-0.87	<-0.48				
				2019/5/28	Cloudy	24.9	0.3	19.8	0.0	Grayish yellow green	Faint sewage	70	34.3	8	3.3	<-0.73	<-0.80				
		2019/8/7		Sunny	29.5	0.3	23.8	0.0	Grayish yellow	Faint sewage	60	38.2	12	3.0	<-0.64	<-0.74					
		2019/11/26		Cloudy	8.9	0.2	14.3	0.0	Light grayish yellow	None	35	36.3	22	9.1	<-0.87	<-0.61					
		2020/1/25		Cloudy	6.2	0.2	10.6	0.0	Light grayish yellow	Faint sewage	72	64.4	3	2.0	<-0.73	<-0.74					
7	Otsu River	Sanno Bridge, under	Kamagaya City	2019/5/27	Sunny	33.8	0.3	27.3	0.0	Dark grayish yellow green	None	35	63.3	14	7.5	<-0.65	<-0.80				
				2019/8/20	Cloudy	28.3	0.8	26.3	0.0	Dark grayish yellow	None	58	54.0	6	4.4	<-0.88	<-0.59				
				2019/11/7	Sunny	21.5	0.2	17.9	0.0	Grayish greenish yellow	None	50	53.1	9	3.7	<-0.55	<-0.61				
		2020/1/26		Cloudy	6.2	0.5	9.3	0.0	Grayish yellow green	None	60	42.9	3	3.6	<-0.72	<-0.48					
		2019/5/27		Sunny	34.0	0.9	28.7	0.0	Grayish greenish yellow	None	33	34.5	13	8.1	<-0.58	<-0.85					
		2019/8/20		Cloudy	34.0	0.7	28.7	0.0	Grayish yellow	None	32	30.3	46	18	<-0.76	<-0.88					
8	Someiotoshi	Someishinbashi Bridge	Kashiwa City	2019/11/7	Sunny	20.5	0.5	16.9	0.0	Grayish greenish yellow	None	94	38.4	3	1.9	<-0.81	<-0.61				
				2020/1/26	Cloudy	6.2	0.5	8.8	0.0	Grayish yellow	None	58	36.5	4	1.8	<-0.69	<-0.80				
				2019/5/28	Cloudy	24.5	0.1	20.2	0.0	Grayish yellow	Faint sewage	>100	40.5	4	2.3	<-0.58	<-0.90				
		2019/8/7		Sunny	33.0	0.1	24.9	0.0	Grayish yellow	Faint sewage	66	37.8	7	2.2	<-0.58	<-0.61					
		2019/11/26		Cloudy	9.0	0.1	15.2	0.0	Grayish yellow	None	>100	40.3	17	8.5	<-0.62	<-0.55					
		2020/1/25		Sunny	9.0	0.1	11.6	0.0	Grayish yellow	None	>100	41.5	2	0.9	<-0.72	<-0.66					
9	Kanayamaotoshi	Downstream of Karuzawasakai Bridge	Kamagaya City /Shiroi City	2019/5/27	Sunny	32.3	0.7	27.2	0.0	Grayish yellow	None	39	33.3	15	7.5	<-0.77	<-0.74				
				2019/8/20	Cloudy	30.0	0.6	26.7	0.0	Grayish yellow	None	30	31.7	23	6.3	<-0.88	<-0.85				
				2019/11/7	Sunny	20.0	0.4	15.1	0.0	Grayish yellow	None	>100	34.9	4	1.9	<-0.68	<-0.66				
		2020/1/26		Cloudy	4.0	0.4	9.1	0.0	Light grayish yellow	None	59	34.9	7	3.1	<-0.92	<-0.80					

Rivers

# Chiba River (Water) 2/4

No.	Location			Sampling Date	Weather	Air temperature (°C)	Water depth (m)	Water										Remarks
	Water area	Location	Municipality					General items							Activity concentration(Bq/L)			
								Water temperature (°C)	Sampling depth (m)	Color	Odor	Transparency (cm)	Electrical conductivity (mS/m)	SS (mg/L)	Turbidity (FNU)	Radioactive cesium Cs-134	Cs-137	
14	Feeder Rivers of Teganuma Lake	Kamenari River	Kamenari Bridge	Inzai City	2019/5/27	Sunny	31.1	0.9	27.5	0.0	Grayish greenish yellow	None	35	36.2	10	7.3	<0.81	<0.80
					2019/8/20	Cloudy	30.1	0.8	27.5	0.0	Grayish yellow green	None	30	33.4	13	7.4	<0.80	<0.85
					2019/11/7	Sunny	19.0	0.4	13.6	0.0	Grayish yellow	None	85	33.3	3	1.9	<0.41	<0.71
					2020/1/26	Cloudy	4.7	0.4	7.5	0.0	Dark grayish yellow green	None	57	37.0	4	2.1	<0.69	<0.61
					2019/5/28	Cloudy	26.5	0.1	24.6	0.0	Grayish greenish yellow	Faint sewage	24	18.9	12	11	<0.84	<0.90
15	Igasuuro Channel	Downstream of Igasuuro Channel	Kamagaya City	2019/8/7	Sunny	35.5	0.1	30.2	0.0	Grayish greenish yellow	Faint sewage	>100	39.0	1	0.8	<0.61	<0.74	
				2019/1/26	Cloudy	8.5	0.1	14.6	0.0	Grayish yellow	None	>100	39.6	7	7.5	<0.53	<0.66	
				2020/1/21	Sunny	10.5	0.1	11.4	0.0	Grayish yellow	None	>100	45.2	1	1.9	<0.68	<0.66	
				2019/5/28	Cloudy	25.0	0.2	23.9	0.0	Grayish greenish yellow	None	86	34.3	2	1.1	<0.75	<0.85	
16	Futae River	Tomigaya Bridge	Funabashi City /Shiroi City	2019/8/7	Sunny	30.5	0.2	29.7	0.0	Grayish yellow	None	>100	42.5	3	1.0	<0.78	<0.66	
				2019/11/26	Cloudy	8.2	0.3	13.1	0.0	Light grayish yellow	None	>100	35.8	14	7.6	<0.78	<0.55	
				2020/1/25	Sunny	9.9	0.2	12.0	0.0	Light grayish yellow	None	>100	39.5	<1	0.3	<0.75	<0.74	
				2019/5/30	Sunny	28.0	1.5	27.1	0.0	Dark grayish yellow green	None	37	30.3	7	6.7	<0.75	<0.85	
17	Kanzaki River	Kanzaki Bridge	Yachiyo City /Inzai City	2019/8/16	Cloudy	28.9	1.8	27.2	0.0	Dark grayish yellow green	None	28	31.6	17	8.5	<0.76	<0.90	
				2019/11/26	Rain	7.1	1.7	12.7	0.0	Dark grayish yellow	None	71	32.1	30	7.9	<0.81	<0.61	
				2020/1/25	Sunny	11.0	1.6	10.5	0.0	Dark grayish yellow	None	52	35.6	5	3.1	<0.69	<0.55	
				2019/5/30	Sunny	28.0	0.8	24.8	0.0	Dark grayish greenish yellow	None	38	31.2	13	7.2	<0.73	<0.67	
18	Kannou River	Kannou Bridge	Yachiyo City	2019/8/16	Cloudy	27.8	0.5	25.9	0.0	Dark grayish yellow green	None	50	35.8	10	4.3	<0.80	<0.67	
				2019/11/26	Cloudy	7.8	0.5	13.4	0.0	Dark grayish reddish yellow	None	21	43.5	110	56	<0.82	<0.74	
				2020/1/25	Cloudy	8.7	0.8	10.8	0.0	Grayish greenish yellow	None	71	43.0	3	1.8	<0.69	<0.66	
				2019/5/30	Sunny	28.0	2.8	24.2	0.0	Dark grayish yellow	Faint sewage	21	28.6	25	14	<0.70	<0.74	
19	Iiba Discharge Channel (upper reaches)	Yachiyo Bridge	Yachiyo City	2019/8/16	Cloudy	28.5	2.9	27.9	0.0	Dark grayish yellow	Faint sewage	24	28.7	40	12	<0.81	<0.90	
				2019/11/26	Cloudy	7.7	3.1	12.8	0.0	Grayish greenish yellow	None	42	27.2	29	11	<0.87	<0.55	
				2020/1/25	Cloudy	10.4	2.7	9.3	0.0	Grayish greenish yellow	None	38	41.0	8	5.5	<0.78	<0.61	
				2019/5/31	Cloudy	25.3	0.5	20.0	0.0	Dark grayish greenish yellow	None	>100	32.4	5	2.9	<0.51	<0.80	
20	Feeder rivers of Lake Inbanuma	Teguri River	Mumei Bridge	Sakura City	2019/8/16	Cloudy	29.3	0.5	25.2	0.0	Dark grayish greenish yellow	None	63	37.3	13	4.7	<0.73	<0.74
					2019/11/8	Sunny	12.2	0.5	14.5	0.0	Light grayish yellow	None	>100	37.6	8	3.2	<0.75	<0.75
					2020/1/21	Sunny	8.0	0.5	9.5	0.0	Light grayish yellow	None	>100	44.5	2	1.3	<0.79	<0.66
					2019/5/31	Cloudy	24.0	1.3	23.0	0.0	Grayish yellow	None	29	25.8	18	12	<0.85	<0.90
21	Moroto River	Moroto Bridge	Inzai City	2019/8/16	Cloudy	28.6	0.8	26.9	0.0	Grayish yellow	None	30	27.2	20	9.1	<0.90	<0.80	
				2019/11/8	Sunny	15.2	1.0	15.2	0.0	Light grayish greenish yellow	None	88	33.0	7	3.0	<0.72	<0.66	
				2020/1/22	Cloudy	4.0	1.0	6.1	0.0	Light grayish greenish yellow	None	>100	37.8	2	1.7	<0.72	<0.55	
				2019/5/31	Cloudy	25.8	0.7	22.1	0.0	Grayish greenish yellow	None	60	30.8	10	4.6	<0.75	<0.85	
22	Kashima River	Iwatomi Bridge	Sakura City	2019/8/9	Sunny	32.0	0.9	24.2	0.0	Grayish yellow	None	71	34.7	6	2.4	<0.58	<0.90	
				2019/11/8	Sunny	16.2	1.7	15.5	0.0	Light grayish yellow green	None	70	31.8	11	4.2	<0.78	<0.54	
				2020/1/22	Cloudy	6.0	0.9	7.9	0.0	Light grayish greenish yellow	None	>100	42.4	3	1.8	<0.66	<0.74	
				2019/5/31	Cloudy	25.6	0.9	20.9	0.0	Grayish greenish yellow	None	64	37.0	7	4.7	<0.75	<0.85	
23	Takasaki River	Ryuto Bridge	Sakura City	2019/8/16	Cloudy	28.5	0.9	25.5	0.0	Grayish yellow	None	65	37.9	7	2.5	<0.62	<0.80	
				2019/11/7	Sunny	21.5	0.5	16.5	0.0	Light grayish yellow	None	70	36.9	10	4.0	<0.81	<0.54	
				2020/1/21	Sunny	10.0	0.6	9.4	0.0	Light grayish yellow	None	75	45.1	4	2.4	<0.69	<0.61	
				2019/5/31	Cloudy	25.1	0.5	22.8	0.0	Grayish greenish yellow	None	49	38.5	10	5.7	<0.85	<0.80	
24	Kashima River	Kashima Bridge	Sakura City	2019/8/16	Cloudy	28.8	0.4	26.4	0.0	Grayish yellow	None	38	36.3	34	10	<0.84	<0.74	
				2019/11/7	Sunny	21.5	1.4	16.0	0.0	Light grayish greenish yellow	None	75	36.3	9	4.1	<0.52	<0.54	
				2020/1/21	Sunny	12.0	2.4	10.0	0.0	Light grayish yellow	None	87	38.1	4	2.1	<0.59	<0.92	
				2019/5/31	Sunny	24.2	2.3	23.4	0.0	Dark grayish greenish yellow	None	22	24.3	23	11	<0.87	<0.67	
25	Inbasuuro Channel	Tsurumaki Bridge	Inzai City	2019/8/16	Cloudy	29.0	2.5	28.7	0.0	Dark grayish yellow	None	32	25.7	19	6.6	<0.80	<0.85	
				2019/11/7	Sunny	19.0	2.4	17.9	0.0	Light grayish yellow	None	32	28.3	18	7.3	<0.78	<0.54	
				2020/1/21	Sunny	10.0	2.5	7.9	0.0	Grayish yellow	None	25	46.4	14	7.8	<0.83	<0.48	
				2019/5/31	Cloudy	27.0	0.4	23.2	0.0	Dark grayish greenish yellow	Faint sewage	37	46.4	33	12	<0.69	<0.80	
26	Edogawa River System	Toneunga Canal	Unga Bridge	Nagareyama City/Noda City	2019/8/22	Cloudy	28.3	0.3	26.3	0.0	Grayish yellow	None	33	43.7	17	7.5	<0.55	<0.80
					2019/11/21	Sunny	10.0	0.4	11.9	0.0	Grayish greenish yellow	None	43	46.5	16	7.2	<0.88	<0.47
					2020/1/20	Sunny	4.2	0.4	6.6	0.0	Grayish greenish yellow	None	70	65.3	5	3.0	<0.70	<0.66

# Chiba River (Water) 3/4

No.	Location			Sampling Date	Weather	Air temperature (°C)	Water depth (m)	Water										Remarks
	Water area	Location	Municipality					General items							Activity concentration (Bq/L)			
								Water temperature (°C)	Sampling depth (m)	Color	Odor	Transparency (cm)	Electrical conductivity (mS/m)	SS (mg/L)	Turbidity (FNU)	Radioactive cesium Cs-134	Cs-137	
R i v e r s	Edogawa River System	Edogawa River	Nagareyama Bridge	Nagareyama City / Misato City	2019/5/31	Cloudy	23.9	0.5	20.7	0.0	Dark grayish yellow green	None	30	18.2	30	9.4	<-0.51	<-0.74
					2019/8/22	Cloudy	23.0	0.3	23.5	0.0	Grayish yellow	None	28	13.6	79	34	<-0.74	<-0.74
					2019/11/21	Sunny	10.8	0.3	11.5	0.0	Grayish yellow green	None	40	25.5	44	17	<-0.78	<-0.54
					2020/1/20	Sunny	6.0	0.3	6.1	0.0	Grayish yellow green	None	54	25.6	5	2.8	<-0.86	<-0.80
		Sakagawa River	Benten Bridge	Matsudo City	2019/5/17	Sunny	27.1	2.0	23.0	0.0	Dark grayish yellow	Faint sewage	60	30.9	6	4.4	<-0.65	<-0.80
					2019/8/6	Sunny	35.0	2.0	31.6	0.0	Yellow greenish dark gray	None	40	38.0	6	4.5	<-0.63	<-0.74
					2019/11/21	Sunny	16.1	2.3	14.3	0.0	Dark grayish yellow green	None	92	39.6	24	8.9	<-0.90	<-0.71
					2020/1/20	Sunny	9.8	2.3	8.7	0.0	Dark grayish green	None	78	33.1	3	1.8	<-0.86	<-0.80
		Shinsaka River	Sakane Bridge	Matsudo City / Katsushika City	2019/5/17	Sunny	25.1	0.9	21.9	0.0	Dark grayish yellow green	Faint sewage	58	31.7	12	5.7	<-0.55	<-0.90
					2019/8/6	Sunny	35.5	0.9	30.3	0.0	Grayish yellow green	None	55	32.7	8	3.9	<-0.72	<-0.67
					2019/11/21	Sunny	14.9	0.7	13.4	0.0	Grayish yellow green	None	90	35.3	24	9.1	<-0.80	<-0.54
					2020/1/20	Sunny	11.1	0.8	9.1	0.0	Grayish yellow green	None	92	36.0	3	1.6	<-0.74	<-0.74
	Edogawa River	Shinkatsushika Bridge	Matsudo City / Katsushika City	2019/5/10	Cloudy	20.8	0.7	17.9	0.0	Dark grayish yellow green	None	44	15.5	6	3.8	<-0.80	<-0.74	
				2019/8/6	Sunny	32.0	0.5	29.7	0.0	Grayish yellow green	None	53	20.3	7	3.8	<-0.87	<-0.74	
				2019/11/21	Sunny	15.0	0.4	12.6	0.0	Grayish yellow green	None	83	24.4	12	6.4	<-0.69	<-0.70	
				2020/1/20	Sunny	14.0	0.5	8.0	0.0	Grayish yellow green	None	85	24.7	3	1.8	<-0.89	<-0.92	
		Ichikawa Bridge	Ichikawa City / Edogawa City	2019/5/17	Sunny	27.1	0.9	21.3	0.0	Dark grayish greenish yellow	None	52	16.8	9	4.8	<-0.89	<-0.90	
				2019/8/9	Sunny	34.0	0.4	31.5	0.0	Dark grayish greenish yellow	None	40	22.0	13	4.6	<-0.72	<-0.55	
				2019/11/28	Rain	10.0	0.6	12.2	0.0	Dark grayish yellow green	None	57	23.8	23	16	<-0.60	<-0.70	
				2020/1/20	Sunny	12.2	0.7	8.7	0.0	Dark grayish yellow green	None	72	25.5	6	2.7	<-0.81	<-0.66	
		Vicinity of Keiyo Road	Ichikawa City / Edogawa City	2019/5/20	Cloudy	30.0	3.7	21.7	0.0	Dark grayish greenish yellow	None	48	18.5	9	6.1	<-0.53	<-0.61	
				2019/8/31	Cloudy	29.5	2.7	24.5	0.0	Dark grayish yellow	None	33	19.1	21	7.8	<-0.68	<-0.90	
				2019/11/29	Sunny	8.5	3.0	10.8	0.0	Grayish greenish yellow	None	44	24.3	18	19	<-0.74	<-0.74	
				2020/1/24	Cloudy	13.5	3.6	8.3	0.0	Grayish yellow green	None	53	27.0	3	2.1	<-0.58	<-0.86	
	Gyotoku Movable Weir (upper reaches)	Ichikawa City	2019/5/20	Cloudy	24.0	4.4	20.2	0.0	Dark grayish greenish yellow	None	52	19.8	9	6.1	<-0.71	<-0.66		
			2019/6/13	Sunny	28.2	2.6	19.3	0.0	Grayish yellow green	None	38	18.2	7	4.7	<-0.82	<-0.85		
			2019/7/24	Cloudy	36.0	3.4	25.2	0.0	Dark grayish yellow green	Faint fish	82	31.3	3	2.4	<-0.68	<-0.85		
2019/8/24			Cloudy	28.2	3.5	24.5	0.0	Grayish yellow green	None	22	14.4	20	15	<-0.89	<-0.88			
2019/9/27			Sunny	28.0	3.7	24.3	0.0	Dark grayish yellow green	None	64	37.2	4	3.2	<-0.89	<-0.80			
2019/11/29			Sunny	7.5	3.6	11.3	0.0	Grayish greenish yellow	None	40	29.7	33	13	<-0.80	<-0.54			
2020/1/24			Cloudy	14.3	3.8	7.9	0.0	Grayish yellow green	None	51	36.6	4	2.6	<-0.75	<-0.61			
2019/5/20			Cloudy	22.6	0.1	23.4	0.0	Grayish yellow green	None	50	3,820	15	7.1	<-0.90	<-0.90			
Shingyotokubashi Bridge	Ichikawa City	2019/8/24	Cloudy	30.2	0.3	29.7	0.0	Dark grayish yellow	None	21	3,770	34	16	<-0.79	<-0.80			
		2019/11/29	Sunny	7.9	0.2	11.8	0.0	Dark grayish yellow green	None	42	4,240	19	7.5	<-0.83	<-0.83			
		2020/1/24	Cloudy	13.5	0.3	10.2	0.0	Grayish yellow	None	>100	4,390	2	0.5	<-0.64	<-0.92			
		2019/5/20	Cloudy	27.0	4.2	21.0	0.0	Dark grayish greenish yellow	None	48	58.4	13	8.1	<-0.85	<-0.80			
Edogawa Floodgate, down	Ichikawa City / Edogawa City	2019/8/31	Cloudy	30.0	7.6	24.7	0.0	Dark grayish yellow	None	26	21.5	43	13	<-0.77	<-0.88			
		2019/11/29	Sunny	8.0	5.5	10.9	0.0	Grayish greenish yellow	None	33	27.5	39	18	<-0.51	<-0.71			
		2020/1/24	Cloudy	13.4	4.2	9.9	0.0	Dark grayish yellow green	None	73	770	3	2.2	<-0.72	<-0.61			
		2019/5/20	Cloudy	24.0	3.1	21.3	0.0	Dark grayish greenish yellow	None	34	225	12	7.2	<-0.75	<-0.80			
		2019/8/31	Cloudy	29.5	3.7	24.7	0.0	Grayish yellow	None	33	19.8	37	11	<-0.75	<-0.67			
		2019/11/29	Sunny	7.5	3.1	11.1	0.0	Grayish greenish yellow	None	36	31.1	39	16	<-0.64	<-0.86			
8 km Point to the estuary	Ichikawa City / Edogawa City	2020/1/24	Sunny	12.9	2.5	10.2	0.0	Grayish yellow green	None	54	840	4	3.2	<-0.93	<-0.74			

# Chiba River (Water) 4/4

No.	Location			Sampling Date	Weather	Air temperature (°C)	Water depth (m)	Water										Remarks
	Water area	Location	Municipality					General items							Activity concentration (Bq/L)			
								Water temperature (°C)	Sampling depth (m)	Color	Odor	Transparency (cm)	Electrical conductivity (mS/m)	SS (mg/L)	Turbidity (FNU)	Radioactive cesium Cs-134	Cs-137	
37	Kyu-Edogawa River	Imai Bridge	Ichikawa City /Edogawa City	2019/5/20	Cloudy	23.0	4.2	21.9	0.0	Dark grayish greenish yellow	None	32	569	7	4.0	<0.79	<0.74	
				2019/8/31	Cloudy	31.0	4.8	25.4	0.0	Dark grayish yellow	None	32	21.1	26	9.7	<0.91	<0.90	
				2019/11/29	Sunny	7.0	5.4	11.9	0.0	Grayish greenish yellow	None	51	143	31	12	<0.56	<0.75	
				2020/1/24	Sunny	12.4	5.1	11.8	0.0	Dark grayish yellow green	None	53	1,360	4	1.9	<0.88	<0.66	
				2019/5/24	Sunny	26.8	2.2	18.2	0.0	Dark grayish greenish yellow	None	20	15.3	50	29	<0.65	<0.74	
				2019/6/13	Sunny	20.9	2.3	19.0	0.0	Dark grayish yellow green	None	35	20.3	12	6.4	<0.71	<0.85	
		Urayasu Bridge	Urayasu City/Edogawa City	2019/7/24	Cloudy	30.0	3.0	23.8	0.0	Dark grayish yellow green	None	60	31.6	21	11	<0.68	<0.67	
				2019/8/20	Cloudy	29.1	1.8	28.5	0.0	Yellowish pale gray	None	26	429	24	14	<0.87	<0.89	
				2019/9/27	Sunny	24.0	1.8	24.6	0.0	Dark grayish yellow	None	25	564	30	13	<0.63	<0.85	
				2019/11/27	Cloudy	10.8	2.6	13.4	0.0	Grayish yellow green	None	50	88.8	30	12	<0.43	<0.55	
				2020/1/24	Cloudy	13.0	2.0	11.4	0.0	Dark grayish greenish yellow	None	78	1,560	4	1.9	<0.58	<0.87	
				2019/5/14	Cloudy	20.1	1.5	19.6	0.0	Dark grayish yellow green	None	39	18.6	10	6.4	<0.85	<0.67	
	Mamagawa River	Nemoto Floodgate	Ichikawa City	2019/8/19	Cloudy	29.5	1.2	28.8	0.0	Dark grayish yellow green	Faint sewage	47	19.8	12	5.1	<0.74	<0.90	
				2019/11/28	Rain	9.5	1.2	14.2	0.0	Grayish yellow green	None	49	43.8	21	18	<0.50	<0.74	
				2020/1/21	Sunny	7.0	1.3	6.8	0.0	Dark grayish yellow green	None	84	26.1	4	2.0	<0.84	<0.87	
				2019/5/14	Cloudy	22.1	1.6	19.1	0.0	Dark grayish yellow green	Faint sewage	>100	48.0	3	1.8	<0.71	<0.90	
				2019/8/19	Cloudy	34.0	0.7	27.4	0.0	Dark grayish yellow green	None	99	50.9	8	2.9	<0.73	<0.90	
				2019/1/28	Rain	9.9	0.7	15.2	0.0	Dark grayish yellow green	Faint sewage	85	54.3	18	13	<0.67	<0.61	
	Kokubu River	Suwada Bridge	Ichikawa City	2020/1/21	Sunny	8.5	1.1	10.6	0.0	Grayish yellow green	Faint sewage	74	48.8	3	1.9	<0.72	<0.55	
				2019/5/14	Cloudy	21.8	1.0	19.4	0.0	Dark grayish yellow green	Faint sewage	72	87.2	2	2.8	<0.86	<0.85	
				2019/8/19	Cloudy	33.5	0.4	28.4	0.0	Dark grayish yellow green	None	57	56.4	5	3.4	<0.74	<0.74	
				2019/11/28	Rain	9.5	0.4	15.0	0.0	Dark grayish yellow green	Faint sewage	54	62.7	15	19	<0.74	<0.70	
				2020/1/21	Sunny	9.0	0.9	9.8	0.0	Grayish yellow green	Faint sewage	34	65.2	10	4.2	<0.59	<0.87	
				2019/5/28	Cloudy	25.0	0.5	22.6	0.0	Dark grayish yellow green	Faint sewage	65	43.8	3	2.6	<0.62	<0.74	
	Okashiwa River	Downstream of Nakazawashinbashi Bridge	Kamagaya City /Ichikawa City	2019/8/7	Sunny	32.5	0.5	28.2	0.0	Grayish greenish yellow	Faint sewage	90	43.4	5	1.4	<0.63	<0.85	
				2019/11/28	Rain	9.5	0.5	15.8	0.0	Grayish yellow green	Faint sewage	22	42.2	26	18	<0.90	<0.66	
2020/1/21				Sunny	9.0	0.5	11.2	0.0	Grayish greenish yellow	None	67	45.3	3	1.7	<0.69	<0.55		
2019/5/14				Cloudy	20.8	2.0	19.6	0.0	Yellow greenish pale gray	Faint sewage	55	33.8	6	4.3	<0.65	<0.90		
2019/8/19				Cloudy	34.1	1.5	28.1	0.0	Dark grayish yellow green	None	88	48.3	11	3.9	<0.82	<0.67		
2019/11/28				Rain	10.0	1.6	14.8	0.0	Dark grayish yellow green	Faint sewage	91	65.9	20	16	<0.64	<0.74		
Mamagawa River	Mitomae Bridge	Ichikawa City	2020/1/21	Sunny	10.6	1.7	10.5	0.0	Grayish greenish yellow	Faint sewage	76	47.4	3	2.2	<0.71	<0.87		
			2019/5/20	Cloudy	25.9	1.9	21.8	0.0	Greenish yellowish dark gray	Faint sewage	30	118	22	11	<0.79	<0.88		
			2019/6/13	Sunny	26.2	2.7	22.5	0.0	Grayish yellow green	Faint sewage	47	1,030	2	1.7	<0.89	<0.89		
			2019/7/24	Cloudy	36.0	2.6	25.6	0.0	Dark grayish yellow green	Faint sewage	>100	279	22	16	<0.70	<0.74		
			2019/8/24	Cloudy	32.8	3.0	27.1	0.0	Dark grayish yellow green	Faint sewage	55	269	8	4.6	<0.86	<0.67		
			2019/9/27	Sunny	30.0	2.3	24.2	0.0	Dark grayish yellow green	Faint sewage	68	232	4	1.8	<0.75	<0.80		
Ebigawa River	Yachiyo Bridge	Funabashi City	2019/11/27	Cloudy	9.0	3.1	14.0	0.0	Dark grayish yellow green	Faint sewage	>100	820	52	27	<0.67	<0.66		
			2020/1/27	Cloudy	5.9	3.4	7.8	0.0	Grayish yellow green	None	83	291	3	1.6	<0.69	<0.80		
			2019/5/10	Cloudy	25.5	1.3	20.2	0.0	Dark grayish yellow green	Faint sewage	99	963	3	2.0	<0.83	<0.80		
			2019/8/9	Sunny	32.0	2.2	30.2	0.0	Dark grayish yellow green	Faint sewage	41	542	3	1.8	<0.86	<0.85		
			2019/11/27	Rain	9.6	1.5	13.8	0.0	Dark grayish yellowish green	Faint sewage	>100	923	22	19	<0.82	<0.74		
			2020/1/27	Cloudy	6.0	1.7	8.9	0.0	Dark grayish yellow green	None	73	719	1	0.6	<0.75	<0.74		
Inba Discharge Channel (lower reaches)	Shinhanamigawa Bridge	Chiba City	2019/5/10	Cloudy	27.1	2.7	21.0	0.0	Dark grayish yellow	Faint sewage	33	1,210	10	3.4	<0.67	<0.85		
			2019/6/13	Sunny	27.1	3.6	23.3	0.0	Grayish yellow green	None	>100	3,240	2	0.7	<0.87	<0.87		
			2019/7/24	Cloudy	30.0	3.1	26.7	0.0	Dark grayish greenish yellow	None	40	1,030	13	6.1	<0.71	<0.74		
			2019/8/9	Sunny	35.5	4.0	30.6	0.0	Yellowish black	None	29	1,060	14	7.1	<0.77	<0.90		
			2019/9/27	Sunny	30.0	3.5	28.7	0.0	Dark grayish yellow green	Faint sewage	59	3,450	4	1.3	<0.62	<0.85		
			2019/11/27	Rain	12.4	3.7	13.8	0.0	Dark grayish yellow green	None	>100	1,550	16	10	<0.75	<0.82		
			2020/1/27	Cloudy	6.5	2.6	9.1	0.0	Dark grayish greenish yellow	None	80	1,970	4	1.4	<0.73	<0.95		
			2019/5/10	Cloudy	25.5	1.5	20.7	0.0	Dark grayish yellow green	None	68	1,330	5	2.7	<0.67	<0.88		
Miyako River	Miyako Bridge	Chiba City	2019/8/9	Sunny	34.0	2.8	27.6	0.0	Grayish yellow green	None	>100	741	2	1.4	<0.79	<0.74		
			2019/11/27	Rain	9.1	2.1	13.3	0.0	Dark grayish yellow green	None	>100	635	18	12	<0.67	<0.55		
			2020/1/27	Cloudy	7.0	1.8	9.3	0.0	Dark grayish yellowish green	None	91	946	1	1.0	<0.75	<0.92		





# Chiba River (Sediment) 3/4

No.	Location				Sampling Date	Weather	Air temperature (°C)	Water depth (m)	Sediment															Activity concentration [Bq/kg(dry)]			Remarks
	Water area	Location	Municipality	Sediment temperature (°C)					Sample length (cm)	Color	Odor	General items								Sediment content (%)	Density (g/cm³)	Property	Radioactive cesium				
												Coarse gravel	Medium gravel	Fine gravel	Grain size distribution(%)				Silt				Clay	Cs-134	Cs-137	Total	
															Coarse sand	Medium sand	Fine sand	Silt									
R i v e r S y s t e m	Edogawa River	Nagayama Bridge	Nagayama City /Misato City	2019/5/31	Cloudy	23.9	0.5	21.1	4	Blackish brown	Faint sewage	0.0	0.0	0.3	0.1	2.7	66.4	19.0	11.8	60.4	2.663	Silt/sand	<7.1	65	65		
				2019/8/22	Cloudy	23.0	0.3	23.0	2	Dark olive brown	None	0.0	6.3	0.7	0.5	2.9	16.1	43.1	30.4	43.9	2.507	Silt	11	150	161		
				2019/11/21	Sunny	10.8	0.3	12.0	3	Blackish brown	Faint sewage	0.0	0.0	0.1	16.3	38.5	33.7	11.4	48.0	2.709	Sand/silt	<7.2	55	55			
				2020/1/20	Sunny	6.0	0.3	7.2	3	Blackish brown	None	0.0	0.0	0.0	49.4	40.2	6.1	4.2	76.6	2.817	Sand	<5.7	12	12			
	28	Sakagawa River	Benten Bridge	Matsudo City	2019/5/17	Sunny	27.1	2.0	22.0	7	Black	Faint sewage	0.0	0.1	0.5	0.6	15.5	63.6	9.0	10.7	59.9	2.657	Silt/sand	38	480	518	
					2019/8/6	Sunny	35.0	2.0	28.0	8	Olive black	Faint sewage	0.0	0.1	0.6	0.7	17.8	69.0	5.5	6.3	58.8	2.672	Sand/silt	41	540	581	
					2019/11/21	Sunny	16.1	2.3	15.0	4	Black	Faint sewage	0.0	0.1	0.6	1.4	21.2	65.4	5.2	6.2	70.4	2.696	Sand/silt	29	430	459	
					2020/1/20	Sunny	9.8	2.3	9.3	4	Black	Faint sewage	0.0	0.5	1.8	2.3	19.5	62.1	8.4	5.4	66.9	2.638	Sand/silt	29	500	529	
	29	Shinsaka River	Sakane Bridge	Matsudo City	2019/5/17	Sunny	25.1	0.9	22.3	3	Black	Faint sewage	0.0	5.9	5.1	3.6	49.6	28.8	2.3	4.6	73.1	2.729	Sand	45	640	685	
					2019/8/6	Sunny	35.5	0.9	31.5	2	Olive black	Faint sewage	2.2	19.3	7.2	3.2	42.7	20.4	1.5	3.5	76.0	2.724	Sand/gravel/silt	36	500	536	
					2019/11/21	Sunny	14.9	0.7	13.7	5	Olive black	None	0.0	3.3	3.5	2.2	54.1	33.1	0.1	3.6	73.8	2.740	Sand/silt	33	520	553	
					2020/1/20	Sunny	11.1	0.8	9.2	3	Olive black	Faint sewage	0.0	1.3	0.9	1.2	58.5	34.2	0.7	3.2	75.7	2.745	Sand/gravel	35	570	605	
	30	Shinkatashika Bridge	Matsudo City /Katsushika City	2019/5/10	Cloudy	20.8	0.7	16.0	3	Olive black	Faint sewage	0.0	0.8	1.5	1.9	3.2	39.9	38.6	14.0	47.6	2.645	Silt/sand	13	150	163		
				2019/8/6	Sunny	32.0	0.5	28.2	3	Blackish brown	None	0.0	0.0	0.4	1.1	7.1	47.7	25.4	18.3	46.9	2.622	Silt/sand	9.4	130	139.4		
				2019/11/21	Sunny	15.0	0.4	13.0	4	Blackish brown	Faint sewage	0.0	0.0	0.0	0.1	0.9	14.3	57.5	27.2	49.5	2.562	Silt/sand	<7.5	75	75		
				2020/1/20	Sunny	14.0	0.5	10.0	8	Dark olive	Faint sewage	0.0	0.4	1.2	1.0	1.7	17.8	54.0	23.9	47.9	2.564	Silt	<9.2	73	73		
	31	Ichikawa Bridge	Ichikawa City /Edogawa City	2019/5/17	Sunny	27.1	0.9	20.8	5	Blackish brown	Faint sewage	0.0	2.2	0.6	0.7	31.1	46.6	9.6	9.2	70.7	2.736	Sand/gravel	8.9	130	138.9		
				2019/8/9	Sunny	34.0	0.4	30.5	2	Blackish brown	None	0.0	20.6	2.1	0.3	80.0	25.4	0.1	1.5	77.1	2.801	Sand/gravel	<5.7	80	80		
				2019/11/28	Rain	10.0	0.6	11.2	4	Blackish brown	None	0.0	1.3	0.7	0.5	24.1	55.6	8.4	9.4	53.9	2.777	Sand/silt	<7.6	70	70		
				2020/1/20	Sunny	12.2	0.7	8.5	1	Blackish brown	None	5.1	44.7	5.3	2.0	28.5	13.2	0.0	1.3	80.2	2.855	Gravel/sand	6.0	95	101.0		
	32	Edogawa River	Vicinity of Keiyo Road	Ichikawa City	2019/5/20	Cloudy	30.0	3.7	22.0	4	Olive black	Faint sewage	0.0	0.0	0.0	0.0	23.2	69.2	3.9	3.8	73.5	2.944	Sand	<6.3	37	37	
					2019/8/31	Cloudy	29.5	2.7	24.8	4	Blackish brown	None	0.0	0.2	0.1	0.1	34.3	57.6	2.7	5.0	73.8	2.897	Sand	<4.8	25	25	
					2019/11/29	Sunny	8.5	3.0	12.0	5	Blackish brown	None	0.0	0.0	0.0	0.0	26.2	58.3	9.1	6.5	72.8	2.784	Sand/silt	<4.9	26	26	
					2020/1/24	Cloudy	13.5	3.6	8.0	4	Blackish brown	None	0.0	0.0	0.0	0.0	33.3	57.1	4.4	5.2	78.2	2.776	Sand/silt	<4.4	25	25	
	33	Edogawa River	Gyotoku Movable Weir (upper reaches)	Ichikawa City	2019/5/20	Cloudy	24.0	4.4	19.5	4	Olive black	Faint sewage	0.0	0.0	0.0	0.0	7.8	81.2	5.8	5.2	71.1	2.855	Sand/silt	<4.3	34	34	
					2019/6/13	Sunny	28.2	2.6	19.0	5	Olive black	Faint sewage	0.0	0.0	0.0	0.0	7.6	76.9	5.9	9.5	73.9	2.838	Sand/silt	<5.1	54	54	
					2019/7/24	Cloudy	36.0	3.4	24.0	6	Olive black	Faint sewage	0.0	0.0	0.0	0.0	11.7	79.3	2.6	6.3	80.4	2.884	Sand/silt	2.9	30	32.9	
					2019/8/24	Cloudy	28.2	3.5	23.8	6	Olive black	Faint sewage	0.0	0.0	0.0	0.0	8.1	76.3	7.4	8.2	74.6	2.884	Sand/silt	<5.1	38	38	
					2019/9/27	Sunny	28.0	3.7	23.5	5	Olive black	None	0.0	0.0	0.0	0.0	9.7	80.2	4.4	5.7	60.6	2.959	Sand/silt	<6.1	69	69	
					2019/11/29	Sunny	7.5	3.6	13.5	4	Olive black	None	0.0	0.0	0.0	0.0	23.8	70.5	2.0	3.8	76.9	2.845	Sand/silt	<4.9	16	16	
					2020/1/24	Cloudy	14.3	3.8	8.1	5	Olive black	None	0.0	0.0	0.0	0.0	32.7	60.6	1.5	5.1	77.4	2.837	Sand/silt	<4.8	13	13	
					2019/5/20	Cloudy	22.6	0.1	22.1	3	Olive black	Faint seaweed	0.0	2.3	2.9	0.7	12.4	64.8	9.6	7.5	64.6	2.721	Sand	<5.1	10	10	
	34	Shingotokubashi Bridge	Ichikawa City	2019/8/24	Cloudy	30.2	0.3	29.0	2	Olive black	Faint seaweed	0.0	7.6	4.2	1.4	9.9	42.4	27.0	7.5	69.7	2.707	Sand/silt/gravel	<5.1	6.0	6.0		
				2019/11/29	Sunny	7.9	0.2	10.0	2	Blackish brown	None	0.0	0.9	0.3	0.1	8.1	79.9	4.9	5.8	74.1	2.760	Sand/gravel	<4.3	16	16		
				2020/1/24	Cloudy	13.5	0.3	12.0	3	Olive black	None	0.0	8.2	2.8	1.3	17.7	62.1	3.2	4.8	75.1	2.739	Sand	<4.8	8.6	8.6		
				2019/5/20	Cloudy	27.0	4.2	21.0	3	Olive black	Faint sewage	0.0	0.1	0.1	0.4	48.2	47.3	0.1	3.9	71.0	2.730	Sand	<8.0	20	20		
	35	Edogawa Floodgate, down	Ichikawa City	2019/8/31	Cloudy	30.0	7.6	25.0	4	Dark grayish yellow	None	0.0	0.0	0.0	0.5	44.8	50.7	1.0	2.9	73.4	2.738	Sand	<5.3	15	15		
				2019/11/29	Sunny	8.0	5.5	11.5	4	Blackish brown	None	0.0	0.0	0.4	1.3	46.3	47.1	2.0	2.9	70.6	2.700	Sand	<5.4	21	21		
				2020/1/24	Cloudy	13.4	4.2	10.7	3	Olive black	None	0.0	0.0	0.1	0.2	50.0	45.8	1.0	2.9	76.8	2.751	Sand	<4.3	15	15		
				2019/5/20	Cloudy	24.0	3.1	21.1	4	Blackish brown	Faint sewage	0.0	0.0	0.0	0.1	0.3	31.0	47.2	21.4	45.2	2.600	Silt/sand	<7.9	160	160		
36	Kyu-Edogawa River	8 km Point to the estuary	2019/8/31	Cloudy	29.5	3.7	24.0	8	Grayish olive	Faint sewage	0.0	0.0	0.0	0.0	0.3	13.8	55.0	30.9	44.6	2.510	Silt	20	220	240			
			2019/11/29	Sunny	7.5	3.1	12.0	3	Blackish brown	Faint sewage	0.0	0.0	0.0	0.0	1.2	39.6	37.9	21.3	59.6	2.620	Silt/sand	7.8	100	107.9			
			2020/1/24	Sunny	12.9	2.5	10.0	5	Dark brown	Faint sewage	0.0	0.0	0.0	0.0	0.2	24.9	47.9	27.0	50.1	2.560	Silt/sand	8.2	100	108.2			





# Chiba River (Surrounding Environment) 1/4

No.	Location			Sampling Date	Weather	Air temperature (°C)	Surrounding Environment(Soil,Air dose)											Remarks					
	Water area	Location	Municipality				Left bank				Radioactive cesium			Air Dose (µSv/h)	Right bank				Radioactive cesium			Air Dose (µSv/h)	
							Color	Odor	Property	Activity concentration [Bq/kg(dry)]			Color		Odor	Property	Activity concentration [Bq/kg(dry)]						
										Cs-134	Cs-137	Total					Cs-134		Cs-137	Total			
R i v e r s	Tonegawa River System	Shogen River	Fukama-obashi Bridge	Inzai City /Sakae Town	2019/5/30	Sunny	33.0	Dark brown	Faint earth	Loamy	36	480	516	0.07	Brown	Faint earth	Loamy	58	670	728	0.08		
					2019/8/16	Cloudy	29.3	Dull yellow orange	Faint earth	Loamy	30	330	360	0.07	Dull yellowish brown	Faint earth	Loamy	43	730	773	0.09		
		2019/11/7			Sunny	18.0	Blackish brown	Faint earth	Loamy	41	770	811	0.06	Dark brown	Faint earth	Loamy	39	860	899	0.08			
		2020/1/21			Sunny	10.9	Dark brown	Faint earth	Loamy	22	470	492	0.06	Dull yellowish brown	Faint earth	Loamy	37	480	517	0.08			
		2	Shogen River	Jinbei Bridge	Inzai City /Sakae Town	2019/5/30	Sunny	22.6	Dark brown	Faint earth	Loamy	19	210	229	0.06	Dark brown	Faint earth	Loamy	22	270	292	0.05	
						2019/8/16	Cloudy	28.0	Grayish yellowish brown	Faint earth	Loamy	8.0	130	138.0	0.06	Dull yellowish brown	Faint earth	Loamy	27	280	307	0.06	
						2019/11/7	Sunny	14.8	Dark brown	Faint earth	Loamy	15	250	265	0.06	Dark brown	Faint earth	Loamy	17	220	237	0.05	
						2020/1/20	Sunny	14.3	Dark brown	Faint earth	Loamy	<8.5	130	130	0.06	Blackish brown	Faint earth	Loamy	14	250	264	0.05	
						2019/5/16	Sunny	25.5	Dull yellow orange	Faint earth	Loamy	17	240	257	0.06	Dull yellow orange	Faint earth	Loamy	35	490	523	0.07	
						2019/8/21	Sunny	29.3	Dark brown	Faint earth	Loamy	<5.3	110	110	0.06	Dull yellowish brown	Faint earth	Loamy	31	500	531	0.07	
		3	Tonegawa River System	Nagato River	Nagato Bridge	Sakae Town	2019/11/6	Sunny	24.0	Dark brown	Faint earth	Loamy	17	220	237	0.05	Dark brown	Faint earth	Loamy	38	610	648	0.07
							2020/1/21	Sunny	7.5	Blackish brown	Faint earth	Loamy	7.7	160	167.7	0.06	Dark brown	Faint earth	Loamy	27	390	417	0.07
							2019/5/16	Sunny	24.2	Dark brown	Faint earth	Loamy	19	270	289	0.05	Dull yellowish brown	Faint earth	Loamy	41	570	611	0.07
							2019/8/21	Sunny	29.5	Blackish brown	Faint earth	Loamy	12	190	202	0.04	Dark brown	Faint earth	Loamy	19	310	329	0.07
2019/11/6	Sunny						14.3	Blackish brown	Faint earth	Loamy	12	260	272	0.06	Dark brown	Faint earth	Loamy	8.9	150	158.9	0.07		
2020/1/20	Sunny						11.8	Blackish brown	Faint earth	Loamy	16	280	296	0.05	Dark brown	Faint earth	Loamy	7.0	96	103.0	0.06		
2019/5/16	Sunny						23.9	Brown	Faint earth	Loamy	8.2	90	98.2	0.06	Dull yellowish brown	Faint earth	Loamy	23	370	393	0.05		
2019/8/21	Sunny						25.2	Dull yellowish brown	Faint earth	Loamy	13	150	163	0.06	Dark brown	Faint earth	Loamy	24	390	414	0.06		
2019/11/6	Sunny						19.2	Blackish brown	Faint earth	Loamy	<8.6	100	100	0.06	Dark brown	Faint earth	Loamy	17	410	427	0.06		
2020/1/20	Sunny						13.5	Dark brown	Faint earth	Loamy	10	160	170	0.05	Dark olive brown	Faint earth	Loamy	17	260	277	0.05		
2019/5/16	Cloudy						28.2	Dark brown	Faint earth	Loamy	44	570	614	0.06	Dull yellowish brown	Faint earth	Loamy	31	380	411	0.07		
2019/8/21	Sunny	29.5	Blackish brown	Faint earth	Loamy	20	350	370	0.06	Blackish brown	Faint earth	Loamy	25	430	455	0.07							
4	Tonegawa River System	Nagato River	Fujimi Bridge	Sakae Town	2019/11/6	Sunny	19.2	Blackish brown	Faint earth	Loamy	<8.6	100	100	0.06	Dark brown	Faint earth	Loamy	17	410	427	0.06		
					2020/1/20	Sunny	13.5	Dark brown	Faint earth	Loamy	10	160	170	0.05	Dark olive brown	Faint earth	Loamy	17	260	277	0.05		
					2019/5/16	Cloudy	28.2	Dark brown	Faint earth	Loamy	44	570	614	0.06	Dull yellowish brown	Faint earth	Loamy	31	380	411	0.07		
					2019/8/21	Sunny	29.5	Blackish brown	Faint earth	Loamy	20	350	370	0.06	Blackish brown	Faint earth	Loamy	25	430	455	0.07		
					2019/11/6	Sunny	16.0	Blackish brown	Faint earth	Loamy	21	320	341	0.06	Dark brown	Faint earth	Loamy	25	470	495	0.07		
					2020/1/20	Sunny	10.0	Blackish brown	Faint earth	Loamy	21	370	391	0.07	Blackish brown	Faint earth	Loamy	20	370	390	0.07		
					2019/5/16	Sunny	22.8	Dull yellowish brown	Faint earth	Loamy	14	180	194	0.06	Grayish yellowish brown	Faint earth	Loamy	22	240	262	0.05		
					2019/8/21	Sunny	31.2	Blackish brown	Faint earth	Loamy	20	250	270	0.06	Dark brown	Faint earth	Loamy	27	360	387	0.06		
					2019/11/6	Sunny	15.8	Dark brown	Faint earth	Loamy	12	130	142	0.06	Blackish brown	Faint earth	Loamy	14	160	174	0.05		
					2020/1/20	Sunny	9.1	Blackish brown	Faint earth	Loamy	<9.6	100	100	0.05	Blackish brown	Faint earth	Loamy	7.2	110	117.2	0.05		
8	Feeder rivers of Lake Teganuma	Ohori River	Kitakashiwa Bridge	Kashiwa City	2019/5/27	Sunny	33.0	Dull yellowish brown	Faint earth	Loamy	130	1,500	1,630	0.10	Grayish yellowish brown	Faint earth	Loamy	210	2,500	2,710	0.10		
					2019/8/20	Cloudy	27.5	Dark brown	Faint earth	Loamy	88	1,200	1,288	0.09	Dark brown	Faint earth	Loamy	200	2,800	3,000	0.09		
					2019/11/7	Cloudy	22.0	Dark brown	Faint earth	Loamy	86	1,300	1,386	0.09	Dark brown	Faint earth	Loamy	140	2,200	2,340	0.10		
					2020/1/26	Cloudy	8.0	Dark brown	Faint earth	Loamy	72	1,200	1,272	0.09	Blackish brown	Faint earth	Loamy	120	1,900	2,020	0.10		
					2019/5/28	Cloudy	24.9	Grayish yellowish brown	Faint earth	Loamy	72	980	1,052	0.08	Dull yellowish brown	Faint earth	Loamy	27	300	327	0.07		
					2019/8/7	Sunny	29.5	Grayish yellowish brown	Faint earth	Loamy	68	1,100	1,168	0.08	Dull yellowish brown	Faint earth	Loamy	22	360	382	0.07		
					2019/11/26	Cloudy	8.9	Blackish brown	Faint earth	Loamy	42	730	772	0.07	Dark brown	Faint earth	Loamy	17	250	267	0.07		
		9	Osut River	Sanno Bridge, under	Kamagaya City	2020/1/25	Cloudy	6.2	Blackish brown	Faint earth	Loamy	45	760	805	0.07	Dark brown	Faint earth	Loamy	21	210	231	0.06	
						2019/5/27	Sunny	33.8	Dull yellowish brown	Faint earth	Loamy	66	870	936	0.08	Dull yellowish brown	Faint earth	Loamy	22	260	282	0.08	
						2019/8/20	Cloudy	28.3	Dull yellowish brown	Faint earth	Loamy	30	460	490	0.08	Dark brown	Faint earth	Loamy	22	220	242	0.08	
						2019/11/7	Sunny	21.5	Blackish brown	Faint earth	Loamy	41	470	511	0.07	Dark brown	Faint earth	Loamy	11	200	211	0.08	
						2020/1/26	Cloudy	6.2	Blackish brown	Faint earth	Loamy	31	530	561	0.07	Dark brown	Faint earth	Loamy	20	250	270	0.07	
						2019/5/27	Sunny	34.0	Grayish yellowish brown	Faint earth	Loamy	100	1,500	1,600	0.05	Grayish yellowish brown	Faint earth	Loamy	85	1,200	1,285	0.05	
		10	Somemirotoshi	Somemishinbashi Bridge	Kashiwa City	2019/8/20	Cloudy	34.0	Blackish brown	Faint earth	Loamy	40	640	680	0.05	Dark brown	Faint earth	Loamy	70	820	890	0.05	
2019/11/7	Sunny					20.5	Blackish brown	Faint earth	Loamy	42	810	852	0.06	Blackish brown	Faint earth	Loamy	27	550	577	0.06			
2020/1/26	Cloudy					6.2	Blackish brown	Faint earth	Loamy	43	620	663	0.06	Blackish brown	Faint earth	Loamy	47	690	737	0.06			
2019/5/28	Cloudy					24.5	Dull yellowish brown	Faint earth	Loamy	140	1,600	1,740	0.07	Dull yellowish brown	Faint earth	Loamy	110	1,400	1,510	0.06			
2019/8/7	Sunny					33.0	Dark brown	Faint earth	Loamy	100	1,600	1,700	0.06	Dull yellowish brown	Faint earth	Loamy	69	1,200	1,269	0.06			
2019/11/26	Cloudy					9.0	Blackish brown	Faint earth	Loamy	100	1,500	1,600	0.06	Blackish brown	Faint earth	Loamy	85	1,300	1,385	0.06			
2020/1/25	Sunny					9.0	Dark brown	Faint earth	Loamy	79	1,200	1,279	0.06	Dark brown	Faint earth	Loamy	49	840	889	0.06			
11	Kanayamaotoshi	Downstream of Karuzawasakai Bridge	Kamagaya City /Shiroi City	2019/5/27	Sunny	32.3	Blackish brown	Faint earth	Loamy	27	370	397	0.04	Dark brown	Faint earth	Loamy	69	890	959	0.07			
				2019/8/20	Cloudy	30.0	Blackish brown	Faint earth	Loamy	51	730	781	0.05	Blackish brown	Faint earth	Loamy	43	570	613	0.07			
				2019/11/7	Sunny	20.0	Blackish brown	Faint earth	Loamy	45	560	605	0.06	Dark brown	Faint earth	Loamy	59	600	659	0.08			
				2020/1/26	Cloudy	4.0	Blackish brown	Faint earth	Loamy	19	270	289	0.04	Blackish brown	Faint earth	Loamy	46	840	886	0.06			

# Chiba River (Surrounding Environment) 2/4

Location				Sampling Date	Weather	Air temperature (°C)	Surrounding Environment(Soil,Air dose)												Remarks					
No.	Water area	Location	Municipality				Color	Odor	Property	Left bank			Right bank			Air Dose (µSv/h)	Color	Odor		Property	Radioactive cesium			Air Dose (µSv/h)
										Activity concentration [Bq/kg(dry)]			Activity concentration [Bq/kg(dry)]											
							Radioactive cesium			Radioactive cesium														
							Cs-134	Cs-137	Total	Cs-134	Cs-137	Total												
R i v e r s	14	Feeder Rivers of Teganuma Lake	Kamenari River	Kamenari Bridge	Inzai City	2019/5/27	Sunny	31.1	Grayish yellowish brown	Faint earth	Loamy	39	390	429	0.07	Grayish yellowish brown	Faint earth	Loamy	31	420	451	0.08		
						2019/8/20	Cloudy	30.1	Blackish brown	Faint earth	Loamy	37	610	647	0.06	Blackish brown	Faint earth	Loamy	31	420	451	0.07		
						2019/11/7	Sunny	19.0	Blackish brown	Faint earth	Loamy	30	540	570	0.07	Blackish brown	Faint earth	Loamy	36	620	656	0.08		
						2020/1/26	Cloudy	4.7	Blackish brown	Faint earth	Loamy	19	310	329	0.06	Blackish brown	Faint earth	Loamy	33	500	533	0.07		
	15		Igusassuiro Channel	Downstream of Igusassuiro Channel	Kamagaya City	2019/5/28	Cloudy	26.5	Dull yellowish brown	Faint earth	Loamy	48	650	698	0.07	Dull yellowish brown	Faint earth	Loamy	10	110	120	0.06		
						2019/8/7	Sunny	35.5	Grayish yellowish brown	Faint earth	Loamy	48	650	698	0.07	Dull yellowish brown	Faint earth	Loamy	10	160	170	0.05		
						2019/11/26	Cloudy	8.5	Blackish brown	Faint earth	Loamy	32	690	722	0.07	Dark brown	Faint earth	Loamy	7.9	130	137.9	0.06		
						2020/1/21	Sunny	10.5	Dull yellowish brown	Faint earth	Loamy	48	620	668	0.07	Dark brown	Faint earth	Loamy	9.5	160	169.5	0.06		
						2019/5/28	Cloudy	25.0	Dull yellowish brown	Faint earth	Loamy	63	900	963	0.08	Grayish yellowish brown	Faint earth	Loamy	6.5	880	945	0.07		
						2019/8/7	Sunny	30.5	Dull yellowish brown	Faint earth	Loamy	36	550	586	0.07	Dull yellowish brown	Faint earth	Loamy	62	970	1,032	0.08		
	16		Futae River	Tomigaya Bridge	Funabashi City /Shiroi City	2019/11/26	Cloudy	8.2	Blackish brown	Faint earth	Loamy	32	540	572	0.07	Blackish brown	Faint earth	Loamy	50	690	740	0.08		
						2020/1/25	Sunny	9.9	Brown	Faint earth	Loamy	36	540	576	0.06	Dark brown	Faint earth	Loamy	44	750	794	0.06		
						2019/5/30	Sunny	28.0	Dark brown	Faint earth	Loamy	37	460	497	0.06	Dark brown	Faint earth	Loamy	20	270	290	0.05		
						2019/8/16	Cloudy	28.9	Dull yellowish brown	Faint earth	Loamy	22	310	332	0.06	Dark brown	Faint earth	Loamy	24	310	334	0.06		
	17		Kanzaki River	Kanzaki Bridge	Yachiyō City /Inzai City	2019/11/26	Rain	7.1	Dark brown	Faint earth	Loamy	28	470	498	0.07	Blackish brown	Faint earth	Loamy	19	310	329	0.06		
						2020/1/25	Sunny	11.0	Dark brown	Faint earth	Loamy	25	420	445	0.05	Blackish brown	Faint earth	Loamy	14	240	254	0.05		
						2019/5/30	Sunny	28.0	Dark brown	Faint earth	Loamy	34	460	494	0.05	Dark brown	Faint earth	Loamy	44	590	634	0.06		
						2019/8/16	Cloudy	27.8	Blackish brown	Faint earth	Loamy	41	620	661	0.07	Dark brown	Faint earth	Loamy	55	670	725	0.07		
	18		Kannou River	Kannou Bridge	Yachiyō City	2019/11/26	Cloudy	7.8	Black	Faint earth	Loamy	37	460	497	0.06	Blackish brown	Faint earth	Loamy	46	650	696	0.06		
						2020/1/25	Cloudy	8.7	Blackish brown	Faint earth	Loamy	51	590	641	0.06	Blackish brown	Faint earth	Loamy	32	570	602	0.06		
						2019/5/30	Sunny	28.0	Dark brown	Faint earth	Loamy	33	460	493	0.07	Brown	Faint earth	Loamy	130	2,000	2,130	0.06		
						2019/8/16	Cloudy	28.5	Dark brown	Faint earth	Loamy	29	340	369	0.07	Dull yellowish brown	Faint earth	Loamy	84	1,200	1,284	0.06		
	19		Inba Discharge Channel (upper reach)	Yachiyō Bridge	Yachiyō City	2019/11/26	Cloudy	7.7	Blackish brown	Faint earth	Loamy	28	380	408	0.07	Blackish brown	Faint earth	Loamy	76	1,200	1,276	0.05		
						2020/1/25	Cloudy	10.4	Blackish brown	Faint earth	Loamy	22	360	382	0.07	Dark brown	Faint earth	Loamy	71	1,200	1,271	0.05		
						2019/5/31	Cloudy	25.5	Dull yellowish brown	Faint earth	Loamy	67	890	957	0.06	Dull yellowish brown	Faint earth	Loamy	38	530	568	0.07		
						2019/8/16	Cloudy	29.3	Dark brown	Faint earth	Loamy	27	470	497	0.06	Dark brown	Faint earth	Loamy	21	350	371	0.07		
	20	Feeder rivers of Lake Inbanuma	Teguri River	Mumei Bridge	Sakura City	2019/11/8	Sunny	12.2	Dark brown	Faint earth	Loamy	21	310	331	0.06	Dark brown	Faint earth	Loamy	15	340	355	0.07		
2020/1/21						Sunny	8.0	Dark brown	Faint earth	Loamy	18	280	298	0.06	Blackish brown	Faint earth	Loamy	<8.0	180	180	0.07			
2019/5/31						Cloudy	24.0	Dark brown	Faint earth	Loamy	32	510	542	0.05	Dark brown	Faint earth	Loamy	38	480	518	0.06			
2019/8/16						Cloudy	28.6	Dark brown	Faint earth	Loamy	17	250	267	0.06	Dark brown	Faint earth	Loamy	29	390	419	0.06			
21		Moroto River	Moroto Bridge	Inzai City	2019/11/8	Sunny	15.2	Dark brown	Faint earth	Loamy	12	280	292	0.06	Blackish brown	Faint earth	Loamy	23	320	343	0.06			
					2020/1/22	Cloudy	4.0	Dark brown	Faint earth	Loamy	24	270	294	0.05	Blackish brown	Faint earth	Loamy	10	180	190	0.06			
					2019/5/31	Cloudy	25.8	Blackish brown	Faint earth	Loamy	8.1	82	90.1	0.04	Grayish yellowish brown	Faint earth	Loamy	<4.4	20	20	0.05			
					2019/8/9	Sunny	32.0	Dull yellowish brown	Faint earth	Loamy	8.9	120	128.9	0.05	Dull yellowish brown	Faint earth	Loamy	<8.7	20	20	0.04			
22		Kashima River	Iwatomi Bridge	Sakura City	2019/11/8	Sunny	16.2	Dark brown	Faint earth	Loamy	<8.8	99	99	0.04	Brown	Faint earth	Loamy	<8.4	12	12	0.05			
					2020/1/22	Cloudy	6.0	Blackish brown	Faint earth	Loamy	5.9	86	91.9	0.04	Dark brown	Faint earth	Loamy	<7.4	58	58	0.04			
					2019/5/31	Cloudy	25.6	Dark brown	Faint earth	Loamy	11	160	171	0.05	Grayish yellowish brown	Faint earth	Loamy	25	250	275	0.04			
					2019/8/16	Cloudy	28.5	Blackish brown	Faint earth	Loamy	16	280	296	0.06	Blackish brown	Faint earth	Loamy	14	170	184	0.05			
23		Takasaki River	Ryuto Bridge	Sakura City	2019/11/7	Sunny	21.5	Dark brown	Faint earth	Loamy	<8.5	84	84	0.05	Blackish brown	Faint earth	Loamy	14	230	244	0.05			
					2020/1/21	Sunny	10.0	Dark brown	Faint earth	Loamy	14	280	294	0.06	Dark brown	Faint earth	Loamy	<7.2	160	160	0.05			
					2019/5/31	Cloudy	25.1	Grayish yellowish brown	Faint earth	Loamy	28	320	348	0.05	Grayish yellowish brown	Faint earth	Loamy	25	340	365	0.06			
					2019/8/16	Cloudy	28.8	Blackish brown	Faint earth	Loamy	24	360	384	0.06	Dark brown	Faint earth	Loamy	30	450	480	0.06			
24		Kashima River	Kashima Bridge	Sakura City	2019/11/7	Sunny	21.5	Blackish brown	Faint earth	Loamy	9.2	190	199.2	0.05	Blackish brown	Faint earth	Loamy	24	560	584	0.05			
					2020/1/21	Sunny	12.0	Dull yellowish brown	Faint earth	Loamy	<6.0	100	100	0.06	Blackish brown	Faint earth	Loamy	17	260	277	0.07			
					2019/5/31	Sunny	24.2	Dark brown	Faint earth	Loamy	31	400	431	0.06	Dark brown	Faint earth	Loamy	33	360	393	0.06			
					2019/8/16	Cloudy	29.0	Blackish brown	Faint earth	Loamy	26	410	436	0.06	Dark brown	Faint earth	Loamy	18	200	218	0.07			
25		Inbasuiro Channel	Tsurumaki Bridge	Inzai City	2019/11/7	Sunny	19.0	Blackish brown	Faint earth	Loamy	19	300	319	0.07	Blackish brown	Faint earth	Loamy	20	290	310	0.07			
					2020/1/21	Sunny	10.0	Blackish brown	Faint earth	Loamy	16	300	316	0.07	Blackish brown	Faint earth	Loamy	26	400	426	0.08			
					2019/5/31	Cloudy	27.0	Dark brown	Faint earth	Loamy	49	580	629	0.08	Brown	Faint earth	Loamy	59	900	959	0.08			
					2019/8/22	Cloudy	28.3	Dark brown	Faint earth	Loamy	31	490	521	0.09	Dark brown	Faint earth	Loamy	76	880	956	0.09			
26	Edogawa River System	Tonungua Canal	Unga Bridge	Nagareyama City/Noda City	2019/11/21	Sunny	10.0	Dark brown	Faint earth	Loamy	25	520	545	0.08	Brown	Faint earth	Loamy	54	1,000	1,054	0.08			
					2020/1/20	Sunny	4.2	Dark brown	Faint earth	Loamy	29	460	489	0.07	Dark brown	Faint earth	Loamy	56	910	966	0.09			

# Chiba River (Surrounding Environment) 3/4

No.	Location			Sampling Date	Weather	Air temperature (°C)	Surrounding Environment(Soil,Air dose)											Remarks										
	Water area	Location	Municipality				Left bank					Right bank																
							Color	Odor	Property	Activity concentration [Bq/kg(dry)]			Air Dose (µSv/h)	Color	Odor	Property	Activity concentration [Bq/kg(dry)]			Air Dose (µSv/h)								
										Cs-134	Cs-137	Total					Cs-134		Cs-137		Total							
R i v e r s	Edogawa River System	Edogawa River	Nagareyama Bridge	Nagareyama City /Misoto City	2019/5/31	Cloudy	23.9	Dark brown	Faint earth	Loamy	110	1,200	1,310	0.09	Dark brown	Faint earth	Loamy	34	350	384	0.07							
					2019/8/22	Cloudy	23.0	Blackish brown	Faint earth	Loamy	62	870	932	0.09	Dark brown	Faint earth	Loamy	26	350	376	0.07							
					2019/11/21	Sunny	10.8	Dark brown	Faint earth	Loamy	80	1,100	1,180	0.09	Blackish brown	Faint earth	Loamy	17	360	377	0.08							
					2020/1/20	Sunny	6.0	Blackish brown	Faint earth	Loamy	59	830	889	0.08	Blackish brown	Faint earth	Loamy	24	310	334	0.07							
		28	Sakagawa River	Benten Bridge	Matsudo City	2019/5/17	Sunny	27.1	-	-	-	-	-	-	-	0.06	-	-	-	-	-	-	0.06	Soil not exposed				
						2019/8/6	Sunny	35.0	-	-	-	-	-	-	-	-	-	-	-	-	-	-	-	-	0.06	Soil not exposed		
						2019/11/21	Sunny	16.1	-	-	-	-	-	-	-	-	-	-	-	-	-	-	-	-	-	0.06	Soil not exposed	
						2020/1/20	Sunny	9.8	-	-	-	-	-	-	-	-	-	-	-	-	-	-	-	-	-	0.05	Soil not exposed	
		29	Shinsaka River	Sakane Bridge	Matsudo City	2019/5/17	Sunny	25.1	-	-	-	-	-	-	-	-	-	-	-	-	-	-	-	-	0.05	Soil not exposed		
						2019/8/6	Sunny	35.5	-	-	-	-	-	-	-	-	-	-	-	-	-	-	-	-	-	0.05	Soil not exposed	
						2019/11/21	Sunny	14.9	-	-	-	-	-	-	-	-	-	-	-	-	-	-	-	-	-	-	0.05	Soil not exposed
						2020/1/20	Sunny	11.1	-	-	-	-	-	-	-	-	-	-	-	-	-	-	-	-	-	-	0.05	Soil not exposed
30	Edogawa River	Shinkatsushika Bridge	Matsudo City /Katsushika City	2019/5/10	Cloudy	20.8	Dull yellowish brown	Faint earth	Loamy	23	260	283	0.08	Brown	Faint earth	Loamy	62	780	842	0.08								
				2019/8/6	Sunny	32.0	Dull yellowish brown	Faint earth	Loamy	25	360	385	0.08	Brown	Faint earth	Loamy	65	820	885	0.07								
				2019/11/21	Sunny	15.0	Dull yellowish brown	Faint earth	Loamy	41	550	591	0.08	Dark brown	Faint earth	Loamy	32	560	592	0.07								
				2020/1/20	Sunny	14.0	Dark brown	Faint earth	Loamy	29	350	379	0.06	Dark brown	Faint earth	Loamy	37	550	587	0.07								
31		Edogawa River	Ichikawa Bridge	Ichikawa City /Edogawa City	2019/5/17	Sunny	27.1	Brown	Faint earth	Loamy	32	370	402	0.07	Dull yellowish brown	Faint earth	Loamy	87	1,000	1,087	0.10							
					2019/8/9	Sunny	34.0	Dull yellowish brown	Faint earth	Loamy	40	480	520	0.06	Grayish yellowish brown	Faint earth	Loamy	74	1,000	1,074	0.10							
					2019/11/28	Rain	10.0	Blackish brown	Faint earth	Loamy	42	450	492	0.07	Blackish brown	Faint earth	Loamy	71	950	1,021	0.09							
					2020/1/20	Sunny	12.2	Dark brown	Faint earth	Loamy	32	530	562	0.06	Blackish brown	Faint earth	Loamy	50	770	820	0.08							
32		Edogawa River	Vicinity of Keiyo Road	Ichikawa City /Edogawa City	2019/5/20	Cloudy	30.0	Dull yellowish brown	Faint earth	Loamy	28	400	428	0.07	Dark brown	Faint earth	Loamy	28	350	378	0.07							
					2019/8/31	Cloudy	29.5	Dull yellowish brown	Faint earth	Loamy	34	520	554	0.07	Blackish brown	Faint earth	Loamy	19	280	299	0.06							
					2019/11/29	Sunny	8.5	Dark brown	Faint earth	Loamy	34	520	554	0.06	Blackish brown	Faint earth	Loamy	18	270	288	0.06							
					2020/1/24	Cloudy	13.5	Dark brown	Faint earth	Loamy	32	430	462	0.07	Blackish brown	Faint earth	Loamy	19	290	309	0.06							
33	Edogawa River	Gyotoku Movable Weir (upper reaches)	Ichikawa City	2019/5/20	Cloudy	24.0	Dull yellowish brown	Faint earth	Loamy	12	180	192	0.06	Grayish yellowish brown	Faint earth	Loamy	29	430	459	0.06								
				2019/6/13	Sunny	28.2	Dark brown	Faint earth	Loamy	17	240	257	0.06	Dark brown	Faint earth	Loamy	23	350	373	0.06								
				2019/7/24	Cloudy	36.0	Brown	Faint earth	Loamy	8.5	120	128.5	0.06	Dark brown	Faint earth	Loamy	26	290	316	0.06								
				2019/8/24	Cloudy	28.2	Dull yellowish brown	Faint earth	Loamy	<7.8	120	120	0.07	Dull yellowish brown	Faint earth	Loamy	26	380	406	0.07								
				2019/9/27	Sunny	28.0	Dull yellowish brown	Faint earth	Loamy	11	180	191	0.06	Dull yellowish brown	Faint earth	Loamy	25	440	465	0.07								
				2019/11/29	Sunny	7.5	Dark brown	Faint earth	Loamy	24	380	404	0.06	Blackish brown	Faint earth	Loamy	28	360	388	0.06								
34		Edogawa River	Shingyotokubashi Bridge	Ichikawa City	2019/8/24	Cloudy	14.3	Blackish brown	Faint earth	Loamy	33	520	553	0.06	Blackish brown	Faint earth	Loamy	14	230	244	0.06							
					2019/5/20	Cloudy	22.6	Dull yellowish brown	Faint earth	Loamy	9.0	140	149.0	0.05	Grayish yellowish brown	Faint earth	Loamy	8.7	100	108.7	0.05							
					2019/8/24	Cloudy	30.2	Dull yellowish brown	Faint earth	Loamy	14	200	214	0.06	Dull yellowish brown	Faint earth	Loamy	<6.4	61	61	0.06							
					2019/11/29	Sunny	7.9	Dark brown	Faint earth	Loamy	9.3	140	149.3	0.05	Dark brown	Faint earth	Loamy	<8.4	75	75	0.05							
					2020/1/24	Cloudy	13.5	Dull yellowish brown	Faint earth	Loamy	<8.2	110	110	0.05	Blackish brown	Faint earth	Loamy	<7.9	47	47	0.05							
					2019/5/20	Cloudy	27.0	Grayish yellowish brown	Faint earth	Loamy	170	2,200	2,370	0.09	Grayish yellowish brown	Faint earth	Loamy	20	310	330	0.06							
35	Edogawa River		Edogawa Floodgate, down	Ichikawa City /Edogawa City	2019/8/31	Cloudy	30.0	Blackish brown	Faint earth	Loamy	140	1,700	1,840	0.09	Blackish brown	Faint earth	Loamy	18	270	288	0.06							
					2019/11/29	Sunny	8.0	Blackish brown	Faint earth	Loamy	67	1,200	1,267	0.08	Blackish brown	Faint earth	Loamy	12	230	242	0.06							
					2020/1/24	Cloudy	13.4	Blackish brown	Faint earth	Loamy	120	2,000	2,120	0.08	Blackish brown	Faint earth	Loamy	22	250	272	0.06							
					2019/5/20	Cloudy	24.0	Grayish yellowish brown	Faint earth	Loamy	64	830	894	0.06	Grayish yellowish brown	Faint earth	Loamy	44	570	614	0.07							
36			Edogawa River	8 km Point to the estuary	Ichikawa City	2019/8/31	Cloudy	29.5	Blackish brown	Faint earth	Loamy	47	610	657	0.06	Blackish brown	Faint earth	Loamy	42	510	552	0.07						
						2019/11/29	Sunny	7.5	Blackish brown	Faint earth	Loamy	50	840	890	0.06	Blackish brown	Faint earth	Loamy	26	530	556	0.07						
		2020/1/24				Sunny	12.9	Blackish brown	Faint earth	Loamy	65	990	1,055	0.06	Dark brown	Faint earth	Loamy	26	410	436	0.07							





# Chiba Lakes and Reservoirs (Water) 2/2

	Location			Sampling Date	Weather	Air temperature (°C)	Water depth (m)	Water								Remarks				
	No.	Water area	Location					General items				Activity concentration(Bq/L)								
								Water temperature (°C)	Sampling depth (m)	Color	Odor	Secchi disk depth (m)	Electrical conductivity (mS/m)	SS (mg/L)	Turbidity (FNU)		Radioactive cesium			
																	Cs-134	Cs-137		
L a k e s  a n d  R e s e r v o i r s	58	Lake Inbanuma	Lower area of Josuido water intake	Surface layer	2019/6/12	Cloudy	24.0	1.5	19.7	0.5	Dark grayish greenish yellow	None	0.5	23.8	36	18	<0.84	<0.66		
				Deep layer	-	-	-	-	-	-	-	-	-	-	-	-	-	-	-	Unable to collect samples from the deep layer due to shallow water
				Surface layer	2019/9/25	Sunny	26.0	1.3	25.3	0.5	Grayish yellow	None	0.4	24.8	42	18	<0.55	<0.85	-	Unable to collect samples from the deep layer due to shallow water
				Deep layer	-	-	-	-	-	-	-	-	-	-	-	-	-	-	-	Unable to collect samples from the deep layer due to shallow water
			Surface layer	2019/12/10	Cloudy	9.3	1.3	9.7	0.5	Grayish greenish yellow	None	0.9	31.8	27	18	<0.52	<0.75	-	Unable to collect samples from the deep layer due to shallow water	
			Deep layer	-	-	-	-	-	-	-	-	-	-	-	-	-	-	-	-	Unable to collect samples from the deep layer due to shallow water
			Surface layer	2020/2/21	Sunny	12.0	1.3	10.1	0.5	Dark grayish yellow	None	0.7	31.9	17	9.8	<0.60	<0.88	-	Unable to collect samples from the deep layer due to shallow water	
			Deep layer	-	-	-	-	-	-	-	-	-	-	-	-	-	-	-	-	Unable to collect samples from the deep layer due to shallow water
	59	Lake Inbanuma	Asobashi Bridge	Surface layer	2019/6/12	Cloudy	25.0	1.9	19.5	0.5	Dark grayish greenish yellow	None	0.7	19.1	17	8.4	<0.67	<0.66	-	Unable to collect samples from the deep layer due to shallow water
				Deep layer	-	-	-	-	-	-	-	-	-	-	-	-	-	-	-	Unable to collect samples from the deep layer due to shallow water
				Surface layer	2019/9/25	Sunny	27.0	1.2	25.6	0.5	Grayish yellow	None	0.8	28.3	8	3.5	<0.83	<0.90	-	Unable to collect samples from the deep layer due to shallow water
				Deep layer	-	-	-	-	-	-	-	-	-	-	-	-	-	-	-	Unable to collect samples from the deep layer due to shallow water
				Surface layer	2019/12/10	Sunny	11.2	1.4	10.3	0.5	Dark grayish greenish yellow	None	1.1	33.5	41	24	<0.88	<0.55	-	Unable to collect samples from the deep layer due to shallow water
				Deep layer	-	-	-	-	-	-	-	-	-	-	-	-	-	-	-	-
Surface layer	2020/2/21	Sunny	14.5	1.6	10.8	0.5	Dark grayish greenish yellow	None	0.9	34.7	9	5.2	<0.76	<0.80	-	Unable to collect samples from the deep layer due to shallow water				
Deep layer	-	-	-	-	-	-	-	-	-	-	-	-	-	-	-	-	Unable to collect samples from the deep layer due to shallow water			

# Chiba Lakes and Reservoirs (Sediment) 1/1

Location			Sampling Date	Weather	Air temperature (°C)	Water depth (m)	Sediment																Activity concentration [Bq/kg(dry)]			Remarks
							General items									Grain size distribution(%)										
No.	Water area	Location	Sediment temperature (°C)	Sample length (cm)	Color	Odor	Coarse gravel	Medium gravel	Fine gravel	Coarse sand	Medium sand	Fine sand	Silt	Clay	Sediment content (%)	Density (g/cm <sup>3</sup> )	Property	Radioactive cesium								
																		Cs-134	Cs-137	Total						
L a k e s  R e s e r v o i r s	52	Fusashita	2019/6/14	Cloudy	31.0	2.7	21.5	7	Olive black	Faint sewage	0.0	1.0	0.5	0.5	16.8	61.1	9.0	11.2	64.4	2.695	Sand/silt	24	300	324		
			2019/9/25	Sunny	27.8	2.2	26.0	4	Olive black	Faint sewage	0.0	0.7	0.6	0.4	16.3	63.4	10.1	8.6	68.6	2.660	Sand/silt	20	240	260		
			2019/12/10	Cloudy	13.5	2.3	9.0	5	Olive black	Faint sewage	0.0	0.1	0.1	0.1	13.6	75.3	3.0	7.8	71.3	2.696	Sand/silt	17	240	257		
	53	Center area of Shimoteganuma	2020/2/21	Sunny	13.6	2.3	9.0	5	Olive black	Faint sewage	0.0	0.0	0.0	0.1	13.0	74.2	4.5	8.2	69.1	2.695	Sand	16	260	276		
			2019/6/14	Cloudy	30.2	1.7	22.0	10	Olive black	None	0.0	0.0	0.0	0.1	4.5	49.6	29.3	16.5	42.9	2.657	Silt/sand	19	310	329		
			2019/9/25	Sunny	28.2	1.3	27.0	10	Olive black	Faint sewage	0.0	0.0	0.0	0.1	4.2	52.2	25.8	17.7	42.7	2.590	Silt/sand	19	290	309		
			2019/12/10	Cloudy	13.2	1.4	9.7	10	Olive black	Faint sewage	0.0	0.0	0.0	0.1	6.9	59.2	19.9	13.7	55.0	2.620	Silt/sand	16	210	226		
			2020/2/21	Sunny	14.3	1.3	9.2	10	Olive black	None	0.0	0.0	0.0	0.1	2.8	48.4	19.9	28.8	47.7	2.604	Silt/sand	20	280	300		
			2019/6/14	Cloudy	26.0	1.7	21.0	10	Olive black	Faint hydrogen sulfide	0.0	0.0	0.0	0.0	0.3	5.8	60.9	33.1	28.5	2.531	Silt	53	720	773		
	54	Center area of Tegama	2019/9/25	Sunny	27.5	1.2	27.0	10	Olive black	Faint sewage	0.0	0.0	0.0	0.0	0.1	5.6	65.0	29.2	29.7	2.459	Silt	42	570	612		
			2019/12/10	Cloudy	13.0	1.3	10.0	10	Olive black	None	0.0	0.0	0.0	0.0	0.2	4.6	68.2	27.0	29.0	2.451	Silt	51	700	751		
			2020/2/21	Sunny	13.5	1.3	9.0	10	Olive black	None	0.0	0.0	0.0	0.0	0.4	6.3	58.7	34.7	30.0	2.479	Silt	42	690	732		
	55	Nedoshita	2019/6/14	Cloudy	28.0	2.2	20.7	10	Olive black	Faint sewage	0.0	0.0	0.0	0.0	0.2	12.1	55.6	32.1	34.2	2.507	Silt	170	2,100	2,270		
			2019/9/25	Sunny	29.0	1.7	25.8	10	Olive black	Faint sewage	0.0	0.0	0.0	0.0	0.1	9.7	56.3	33.8	33.0	2.425	Silt	120	2,100	2,220		
			2019/12/10	Cloudy	13.7	1.8	10.0	9	Olive black	Faint sewage	0.0	0.0	0.0	0.2	0.7	15.5	49.7	34.0	35.2	2.451	Silt/sand	95	1,800	1,895		
	56	Center area of Kita-Inbanuma	2020/2/21	Sunny	15.9	1.7	9.5	10	Olive black	None	0.0	0.0	0.0	0.0	2.5	17.2	45.3	35.1	35.7	2.484	Silt/sand	130	1,900	2,030		
			2019/6/12	Cloudy	20.9	1.5	19.5	10	Olive black	Faint hydrogen sulfide	0.0	0.0	0.0	0.0	0.4	1.1	65.9	32.6	22.6	2.486	Silt	<17	250	250		
			2019/9/25	Sunny	24.9	1.3	25.9	10	Olive black	None	0.0	0.0	0.0	0.0	0.2	0.6	64.1	35.1	24.7	2.446	Silt	23	240	263		
			2019/12/10	Sunny	8.9	1.4	9.0	10	Olive black	None	0.0	0.0	0.0	0.0	0.2	1.1	59.4	39.2	24.5	2.462	Silt	21	260	281		
			2020/2/21	Sunny	11.3	1.4	9.0	10	Olive black	Faint swamp	0.0	0.0	0.0	0.0	0.2	0.9	60.2	38.7	25.5	2.494	Silt	25	260	285		
			2019/6/12	Cloudy	21.0	1.6	19.3	10	Olive black	Faint hydrogen sulfide	0.0	0.0	0.0	0.0	0.6	4.8	64.1	30.5	25.1	2.490	Silt	17	280	297		
			2019/9/25	Sunny	25.5	1.3	25.9	10	Olive black	Faint hydrogen sulfide	0.0	0.0	0.0	0.1	0.5	6.0	64.1	29.3	23.8	2.457	Silt	17	290	307		
			2019/12/10	Cloudy	9.1	1.4	9.9	10	Olive black	None	0.0	0.0	0.0	0.0	0.9	6.0	59.9	33.2	27.1	2.477	Silt	21	270	291		
			2020/2/21	Sunny	13.5	1.3	9.5	10	Olive black	Faint swamp	0.0	0.0	0.0	0.0	1.5	8.5	57.6	32.3	27.1	2.496	Silt	17	320	337		
57			Ipponmatsushita	2019/6/12	Cloudy	24.0	1.5	19.3	10	Olive black	Faint hydrogen sulfide	0.0	0.0	0.0	0.0	0.4	16.5	59.0	24.2	31.1	2.524	Silt	21	290	311	
				2019/9/25	Sunny	26.0	1.3	25.9	10	Olive black	None	0.0	0.0	0.0	0.1	9.8	58.9	31.1	28.7	2.455	Silt	22	350	372		
				2019/12/10	Cloudy	9.3	1.3	10.0	8	Olive black	None	0.0	0.0	0.0	0.0	0.2	15.1	57.0	27.6	29.2	2.514	Silt	21	340	361	
58	Lower area of Josudo water intake	2020/2/21	Sunny	12.0	1.3	9.6	10	Olive black	Faint swamp	0.0	0.0	0.0	0.0	0.4	16.3	50.9	32.4	33.7	2.510	Silt/sand	23	320	343			
		2019/6/12	Cloudy	25.0	1.9	19.2	3	Olive black	Faint sewage	0.0	0.1	0.2	0.1	22.7	66.1	6.8	4.0	71.1	2.685	Sand/silt	11	120	131			
		2019/9/25	Sunny	27.0	1.2	25.2	5	Black	None	0.0	0.0	0.1	0.4	47.8	38.1	3.8	9.9	75.7	2.664	Sand/silt	<4.2	45	45			
59	Asobashi Bridge	2019/12/10	Sunny	11.2	1.4	9.3	4	Olive black	None	0.0	0.3	0.4	0.2	20.2	66.9	6.6	5.5	72.6	2.652	Sand/silt	<3.7	41	41			
		2020/2/21	Sunny	14.5	1.6	9.8	5	Blackish brown	Faint sewage	0.0	0.0	0.0	0.3	18.6	42.6	21.3	17.1	53.0	2.639	Silt/sand	<7.9	47	47			



# Chiba Lakes and Reservoirs (Surrounding Environment) 1/1

Location			Sampling Date	Weather	Air temperature (°C)	Surrounding Environment(Soil,Air dose)							Remarks	
						Soil				Air Dose (μSv/h)				
No.	Water area	Location				General items			Activity concentration [Bq/kg(dry)]			Air Dose (μSv/h)		
						Color	Odor	Property	Radioactive cesium					
									Cs-134	Cs-137	Total			
L a k e s  a n d  R e s e r v o i r s	52	Fusashita	2019/6/14	Cloudy	31.0	-	-	-	-	-	-	-	No sampling location	
			2019/9/25	Sunny	27.8	-	-	-	-	-	-	-	No sampling location	
			2019/12/10	Cloudy	13.5	-	-	-	-	-	-	-	-	No sampling location
			2020/2/21	Sunny	13.6	-	-	-	-	-	-	-	-	No sampling location
	53	Center area of Shimoteganuma	2019/6/14	Cloudy	30.2	Dark brown	Faint earth	Loamy	110	1,600	1,710	0.06		
			2019/9/25	Sunny	28.2	Blackish brown	Faint earth	Loamy	76	1,000	1,076	0.06		
			2019/12/10	Cloudy	13.2	Blackish brown	Faint earth	Loamy	53	840	893	0.06		
			2020/2/21	Sunny	14.3	Dark brown	Faint earth	Loamy	54	970	1,024	0.05		
	54	Center area of Teganuma	2019/6/14	Cloudy	26.0	-	-	-	-	-	-	-	-	No sampling location
			2019/9/25	Sunny	27.5	-	-	-	-	-	-	-	-	No sampling location
			2019/12/10	Cloudy	13.0	-	-	-	-	-	-	-	-	No sampling location
			2020/2/21	Sunny	13.5	-	-	-	-	-	-	-	-	No sampling location
	55	Nedoshita	2019/6/14	Cloudy	28.0	Dark brown	Faint earth	Loamy	440	5,600	6,040	0.08		
			2019/9/25	Sunny	29.0	Extremely dark brown	Faint earth	Loamy	350	5,300	5,650	0.09		
			2019/12/10	Cloudy	13.7	Blackish brown	Faint earth	Loamy	240	3,800	4,040	0.08		
			2020/2/21	Sunny	15.9	Extremely dark brown	Faint earth	Loamy	160	2,700	2,860	0.08		
56	Center area of Kita-Inbanuma	2019/6/12	Cloudy	20.9	Dark brown	Faint earth	Loamy	34	380	414	0.06			
		2019/9/25	Sunny	24.9	Blackish brown	Faint earth	Loamy	21	300	321	0.07			
		2019/12/10	Sunny	8.9	Blackish brown	Faint earth	Loamy	27	320	347	0.07			
		2020/2/21	Sunny	11.3	Dark brown	Faint earth	Loamy	16	290	306	0.06			
57	Ipponmatsushita	2019/6/12	Cloudy	21.0	-	-	-	-	-	-	-	-	No sampling location	
		2019/9/25	Sunny	25.5	-	-	-	-	-	-	-	-	No sampling location	
		2019/12/10	Cloudy	9.1	-	-	-	-	-	-	-	-	No sampling location	
		2020/2/21	Sunny	13.5	-	-	-	-	-	-	-	-	No sampling location	
58	Lower area of Josuido water intake	2019/6/12	Cloudy	24.0	-	-	-	-	-	-	-	-	No sampling location	
		2019/9/25	Sunny	26.0	-	-	-	-	-	-	-	-	No sampling location	
		2019/12/10	Cloudy	9.3	-	-	-	-	-	-	-	-	No sampling location	
		2020/2/21	Sunny	12.0	-	-	-	-	-	-	-	-	No sampling location	
59	Asobashi Bridge	2019/6/12	Cloudy	25.0	Blackish brown	Faint earth	Loamy	76	1,200	1,276	0.05			
		2019/9/25	Sunny	27.0	Blackish brown	Faint earth	Loamy	64	970	1,034	0.06			
		2019/12/10	Sunny	11.2	Dark brown	Faint earth	Loamy	50	850	900	0.06			
		2020/2/21	Sunny	14.5	Blackish brown	Faint earth	Loamy	61	910	971	0.05			

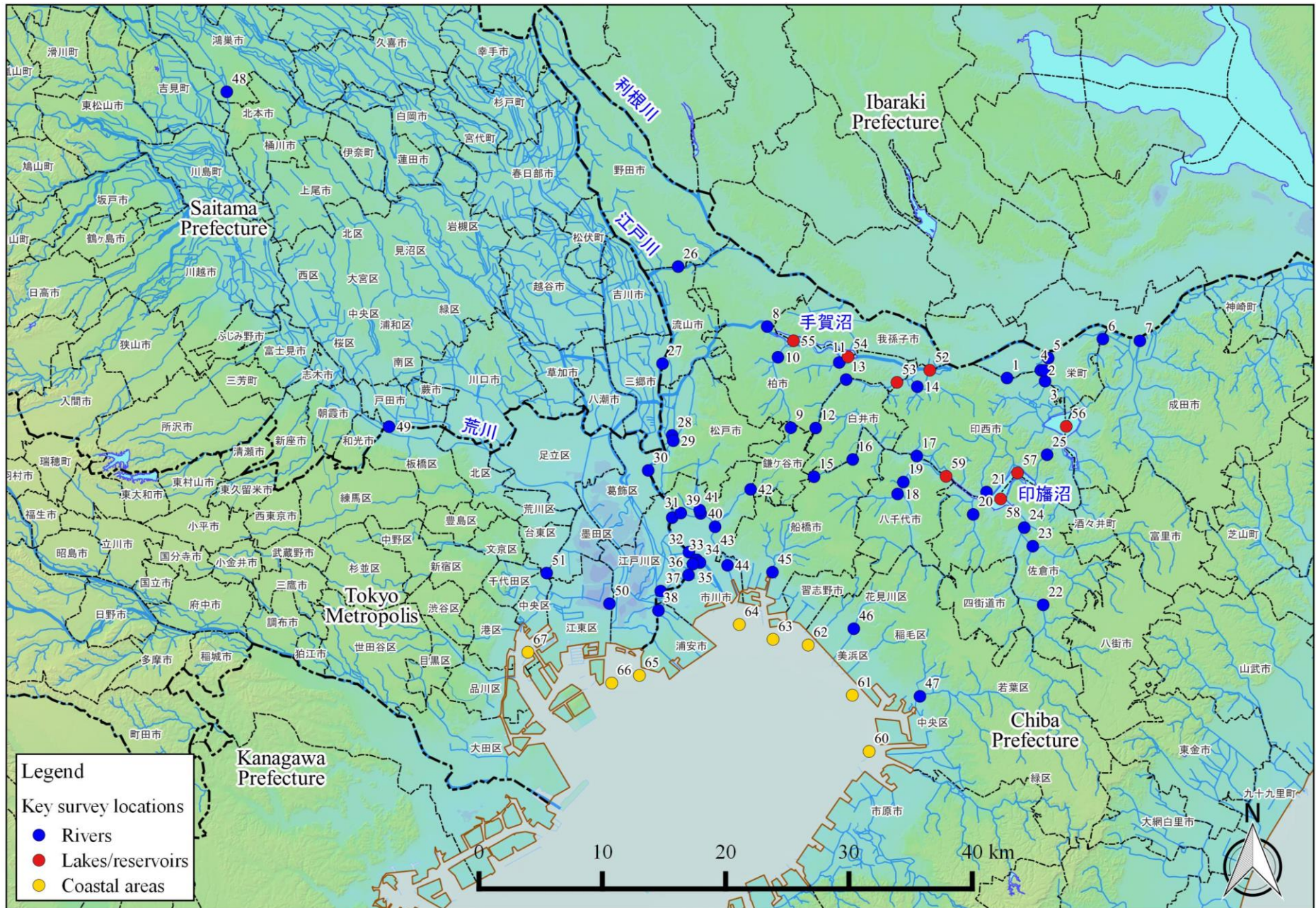
# Chiba Coastal (Water) 1/1

Location				Sampling Date	Weather	Air temperature (°C)	Water depth (m)	Water								Remarks		
No.	Water area		Layer					General items					Activity concentration(Bq/L)					
								Water temperature (°C)	Sampling depth (m)	Color	Odor	Secchi disk depth (m)	Salinity (‰)	SS (mg/L)	Turbidity (FNU)		Cs-134	Cs-137
60	Tokyo Bay 7	Offshore of Yorogawa River Estuary	Surface layer	2019/6/25	Cloudy	24.5	10.2	21.6	0.5	Dark grayish yellow green	None	3.3	27.5	<1	0.3	<0.89	<0.85	
			Deep layer					19.6	9.2	-	None		30.0	<1	0.4	<0.86	<0.80	
			Surface layer	2019/9/20	Sunny	23.8	10.3	24.8	0.5	Dark grayish yellow green	None	4.0	29.5	1	0.5	<0.82	<0.80	
			Deep layer					23.1	9.3	-	None		29.9	2	1.2	<0.73	<0.82	
			Surface layer	2019/12/9	Sunny	9.3	10.1	17.9	0.5	Dark grayish yellow green	None	5.0	30.0	6	4.3	<0.87	<0.87	
			Deep layer					17.3	9.1	-	None		30.5	12	9.8	<0.88	<0.88	
	Surface layer	2020/2/11	Sunny	8.5	9.9	11.3	0.5	Dark grayish yellow green	None	4.0	28.5	1	0.9	<0.59	<0.92			
	Deep layer					9.4	8.9	-	None		30.1	2	1.5	<0.75	<0.74			
	61	Tokyo Bay 5	Offshore of Miyako River Estuary	Surface layer	2019/6/25	Sunny	24.4	8.4	22.9	0.5	Dark grayish greenish yellow	None	1.8	25.6	3	0.9	<0.71	<0.89
				Deep layer					19.7	7.4	-	None		29.7	<1	0.3	<0.80	<0.74
				Surface layer	2019/9/20	Sunny	25.0	8.1	24.0	0.5	Dark grayish yellow green	None	3.0	29.4	1	0.7	<0.73	<0.80
				Deep layer					23.2	7.1	-	None		29.7	2	0.7	<0.77	<0.90
Surface layer				2019/12/9	Sunny	9.0	8.3	14.7	0.5	Dark grayish yellow green	None	5.4	29.5	4	3.4	<0.80	<0.83	
Deep layer								16.3	7.3	-	None		30.1	11	5.2	<0.85	<0.81	
Surface layer		2020/2/11	Sunny	7.5	8.2	9.6	0.5	Grayish greenish yellow	None	4.0	29.9	2	0.9	<0.84	<0.93			
Deep layer						9.8	7.2	-	None		30.0	1	0.9	<0.69	<0.74			
62		Coastal sea area of Makuhari	Offshore of Inbanuma Discharge Channel	Surface layer	2019/6/25	Cloudy	24.0	5.8	22.8	0.5	Dark grayish yellow	None	2.2	24.3	2	0.7	<0.76	<0.85
				Deep layer					19.9	4.8	-	None		29.2	1	0.3	<0.68	<0.85
				Surface layer	2019/7/26	Sunny	27.3	6.2	28.6	0.5	Dark grayish yellow	None	1.0	21.5	6	5.5	<0.89	<0.74
				Deep layer					26.8	5.2	-	None		22.5	4	1.6	<0.77	<0.90
	Surface layer			2019/8/25	Sunny	29.8	6.0	29.1	0.5	Dark grayish yellow	None	1.8	23.2	3	1.5	<0.70	<0.80	
	Deep layer							27.8	5.0	-	None		25.6	4	1.3	<0.67	<0.74	
	Surface layer			2019/9/20	Sunny	25.0	5.4	23.9	0.5	Dark grayish yellow green	None	2.6	28.6	2	0.8	<0.79	<0.80	
	Deep layer							23.3	4.4	-	None		29.2	2	0.8	<0.65	<0.74	
	Surface layer			2019/10/10	Cloudy	24.1	6.2	23.3	0.5	Greenish yellowish dark gray	Faint sewage	2.5	28.6	2	1.1	<0.89	<0.74	
	Deep layer							22.9	5.2	-	None		29.0	4	1.4	<0.87	<0.48	
	Surface layer			2019/12/9	Cloudy	8.0	5.6	15.3	0.5	Dark grayish yellow green	None	4.5	28.3	9	5.0	<0.56	<0.88	
	Deep layer							15.8	4.6	-	None		29.4	8	3.9	<0.78	<0.87	
Surface layer	2020/2/11	Sunny	7.2	6.2	10.1	0.5	Grayish yellow green	None	3.0	28.5	2	0.8	<0.80	<0.74				
Deep layer					9.4	5.2	-	None		29.7	1	0.8	<0.83	<0.74				
63	Approx. 1km offshore of Ebigawa River Estuary	Coastal area of Keiyo Port (Ebigawa River Estuary)	Surface layer	2019/6/25	Cloudy	24.0	6.8	23.0	0.5	Dark grayish reddish yellow	None	2.2	25.5	2	0.7	<0.74	<0.80	
			Deep layer					20.2	5.8	-	None		28.9	2	0.3	<0.83	<0.90	
			Surface layer	2019/9/20	Sunny	24.0	6.5	23.4	0.5	Dark grayish yellow green	None	2.8	29.2	2	1.0	<0.89	<0.90	
			Deep layer					23.3	5.5	-	None		29.3	1	0.8	<0.69	<0.80	
			Surface layer	2019/12/9	Sunny	6.8	6.4	13.1	0.5	Dark grayish yellow green	None	4.8	28.9	7	2.4	<0.81	<0.74	
			Deep layer					13.3	5.4	-	None		28.8	10	3.9	<0.90	<0.87	
			Surface layer	2020/2/11	Sunny	6.8	6.5	9.5	0.5	Dark grayish yellow green	None	3.0	29.4	1	0.7	<0.82	<0.86	
			Deep layer					9.2	5.5	-	None		29.7	2	0.8	<0.69	<0.80	
64	Approx. 1km offshore of Edogawa River Estuary	Coastal area of Keiyo Port (Edogawa River Estuary)	Surface layer	2019/6/25	Cloudy	23.5	4.1	23.0	0.5	Dark grayish yellow	None	1.8	25.3	4	2.8	<0.82	<0.85	
			Deep layer					21.3	3.1	-	None		26.8	2	0.3	<0.86	<0.89	
			Surface layer	2019/9/20	Sunny	23.8	3.5	23.6	0.5	Dark grayish yellow green	None	3.0	28.0	2	1.1	<0.72	<0.74	
			Deep layer					23.2	2.5	-	None		28.4	2	1.1	<0.71	<0.74	
			Surface layer	2019/12/9	Cloudy	6.8	6.0	12.0	0.5	Grayish yellow green	None	1.9	28.1	26	8.4	<0.88	<0.90	
			Deep layer					12.3	5.0	-	None		28.3	14	4.9	<0.71	<0.88	
Surface layer	2020/2/11	Sunny	6.2	3.1	9.0	0.5	Dark grayish yellow green	None	2.0	29.2	3	1.3	<0.80	<0.74				
Deep layer					8.7	2.1	-	None		29.3	4	1.7	<0.71	<0.80				

C o a s t a l a r e a s

# Chiba Coastal (Sediment) 1/1

No.	Location		Sampling Date	Weather	Air temperature (°C)	Water depth (m)	Sediment																					Activity concentration [Bq/kg(dry)]			Remarks
							General items														Sediment content (%)	Density (g/cm <sup>3</sup> )	Property	Radioactive cesium							
	Sediment temperature (°C)	Sample length (cm)					Color	Odor	Grain size distribution(%)						Coarse gravel	Medium gravel	Fine gravel	Coarse sand	Medium sand	Fine sand				Silt	Clay	Cs-134	Cs-137	Total			
									Coarse gravel	Medium gravel	Fine gravel	Coarse sand	Medium sand	Fine sand							Silt	Clay	Cs-134						Cs-137	Total	
C o a s t a l	60	Tokyo Bay 7	Offshore of Yotogawa River Estuary	2019/6/25	Cloudy	24.5	10.2	20.4	6	Olive black	Faint hydrogen sulfide	0.0	1.1	0.4	0.5	0.7	5.4	50.1	41.8	43.7	2.655	Silt	<1.1	1.8	1.8						
				2019/9/20	Sunny	23.8	10.3	23.3	5	Olive black	None	0.0	2.8	0.3	0.8	1.2	4.2	50.0	40.8	63.5	2.644	Silt	<0.80	1.2	1.2						
				2019/12/9	Sunny	9.3	10.1	17.0	4	Olive black	None	0.0	0.9	0.0	0.2	0.4	1.5	41.9	55.2	43.7	2.658	Silt	<1.2	3.6	3.6						
				2020/2/11	Sunny	8.5	9.9	10.8	5	Olive black	None	2.8	1.5	0.7	0.8	1.1	13.5	40.5	39.0	48.3	2.638	Silt	<0.99	3.6	3.6						
	61	Tokyo Bay 5	Offshore of Miyako River Estuary	2019/6/25	Sunny	24.4	8.4	20.9	3	Olive black	None	0.0	2.0	3.5	0.8	2.5	8.1	45.7	37.4	49.7	2.653	Silt	<1.4	1.6	1.6						
				2019/9/20	Sunny	25.0	8.1	24.0	4	Olive black	None	4.9	3.7	1.7	4.8	25.6	25.1	15.8	18.3	71.1	2.683	Silt/sand	<0.88	<0.92							
				2019/12/9	Sunny	9.0	8.3	17.0	4	Olive black	None	11.1	3.1	1.5	3.1	4.7	7.4	31.7	37.6	46.7	2.649	Silt/sand	<1.1	<0.94							
				2020/2/11	Sunny	7.5	8.2	11.0	3	Olive black	None	0.0	0.4	0.6	0.6	1.9	6.0	46.4	44.0	51.6	2.646	Silt	<0.97	<0.91							
	62	Coastal sea area of Makuhan	Offshore of Ibanuma Discharge Channel	2019/6/25	Cloudy	24.0	5.8	21.0	6	Olive black	Faint hydrogen sulfide	0.0	0.0	0.0	0.0	0.2	7.2	81.9	10.7	68.5	2.666	Silt/sand	<6.6	1.9	1.9						
				2019/7/26	Sunny	27.3	6.2	26.0	3	Olive black	Faint sewage	0.0	3.7	0.7	0.4	1.0	28.1	52.3	13.9	72.3	2.705	Silt/sand	<3.2	3.8	3.8						
				2019/8/25	Sunny	29.8	6.0	26.8	8	Olive black	Medium hydrogen sulfide	0.0	0.0	0.0	0.0	0.1	8.0	78.6	13.4	66.6	2.678	Silt/sand	<5.2	7.9	7.9						
				2019/9/20	Sunny	25.0	5.4	24.2	5	Olive black	Faint hydrogen sulfide	0.0	0.0	0.0	0.0	0.1	9.8	76.8	13.3	72.6	2.683	Sand/silt	<4.5	5.0	5.0						
2019/10/10				Cloudy	24.1	6.2	22.3	4	Olive black	Faint hydrogen sulfide	0.0	0.0	0.0	0.1	0.3	10.2	72.9	16.6	63.6	2.685	Silt/sand	<6.9	2.1	2.1							
2019/12/9				Cloudy	8.0	5.6	16.0	5	Olive black	Faint hydrogen sulfide	0.0	0.0	0.1	0.1	0.1	10.2	72.1	17.5	69.6	2.647	Silt/sand	<4.2	1.1	1.1							
2020/2/11				Sunny	7.2	6.2	10.5	3	Olive black	None	0.0	0.0	0.0	0.0	0.1	8.3	80.5	11.1	72.6	2.656	Silt/sand	<5.4	6.0	6.0							
63				Approx. 1km offshore of Edogawa River Estuary	Coastal area of Keayo Port (Edogawa River Estuary)	2019/6/25	Cloudy	24.0	6.8	21.0	5	Olive black	Faint hydrogen sulfide	0.0	1.4	0.6	0.3	2.6	56.7	28.5	10.0	66.3	2.695	Sand/silt	<0.93	8.4	8.4				
	2019/9/20	Sunny	24.0			6.5	24.0	3	Olive black	Faint sewage	0.0	0.2	0.2	0.1	5.6	84.0	4.1	5.9	68.9	2.735	Sand	<0.55	0.85	0.85							
	2019/12/9	Sunny	6.8			6.4	13.2	5	Olive black	Faint hydrogen sulfide	0.0	1.1	0.8	0.1	1.3	57.5	27.4	11.8	68.5	2.690	Silt/sand	1.4	2.1	22.4							
	2020/2/11	Cloudy	6.8			6.5	10.0	3	Olive black	None	0.0	0.7	0.6	0.3	3.2	83.4	6.6	5.3	83.3	2.712	Sand	<2.4	2.2	2.2							
64	Approx. 1km offshore of Edogawa River Estuary	Coastal area of Keayo Port (Edogawa River Estuary)	2019/6/25	Cloudy	23.5	4.1	22.3	3	Olive black	None	0.0	0.2	0.2	0.1	2.6	83.8	6.3	4.9	70.5	2.690	Sand	<0.59	1.5	1.5							
			2019/9/20	Sunny	23.8	3.5	24.3	5	Olive black	Faint seaweed	0.0	0.1	0.1	0.1	3.0	84.0	5.8	6.0	42.4	2.680	Sand	<4.6	4.1	4.1							
			2019/12/9	Cloudy	6.8	6.0	13.0	10	Grayish olive	None	0.0	0.0	0.0	0.0	0.1	0.9	44.0	55.0	45.3	2.640	Silt	<9.6	120	120							
			2020/2/11	Sunny	6.2	3.1	9.0	4	Olive black	None	0.0	0.0	0.1	0.3	0.6	31.6	32.4	35.1	60.4	2.634	Silt/sand	<6.5	80	80							



Survey Locations (Chiba,Saitama,Tokyo Prefectures)