

FY2019 Gunma Prefecture Survey Results

[Outline of results]

(1) Water

Rivers

Radioactive cesium (Cs-134, Cs-137): Not detectable at any location

Lakes and reservoirs

Radioactive cesium (Cs-134, Cs-137): Not detectable at any location

(2) Sediments

Rivers

Cs-134: ND - 63 Bq/kg (dry)

Cs-137: 0.72 - 770 Bq/kg (dry)

Lakes and reservoirs

Cs-134: ND - 200 Bq/kg (dry)

Cs-137: 35 - 3,000 Bq/kg (dry)

(3) Surrounding Environment

(a) Soil

Rivers

Cs-134: ND - 500 Bq/kg (dry)

Cs-137: 4.5 - 6,500 Bq/kg (dry)

Lakes and reservoirs

Cs-134: ND - 360 Bq/kg (dry)

Cs-137: 11 - 5,900 Bq/kg (dry)

(b) Ambient dose rate

Rivers

0.04 - 0.10 μ Sv/h

Lakes and reservoirs

0.04 - 0.15 μ Sv/h

Gunma River (Water) 2/5

Location				Sampling Date	Weather	Air temperature (°C)	Water depth (m)	Water								Remarks			
No.	Water area	Location	Municipality					General items						Activity concentration(Bq/L)					
								Water temperature (°C)	Sampling depth (m)	Color	Odor	Transparency (cm)	Electrical conductivity (mS/m)	SS (mg/L)	Turbidity (FNU)		Radioactive cesium Cs-134	Cs-137	
R i v e r s	Tonegawa River System	Agatsuma River	Downstream of Azuma Bridge	Higashi-Agatsuma Town	2019/5/14	Cloudy	20.5	0.2	15.1	0.0	Light grayish yellow green	None	49	25.9	14	10	<0.78	<0.74	
					2019/6/19	Sunny	26.3	0.3	19.7	0.0	Grayish yellow green	None	>100	26.8	3	2.0	<0.87	<0.74	
					2019/7/3	Cloudy	27.3	0.2	19.7	0.0	Grayish yellow green	None	>100	17.6	8	7.9	<0.66	<0.71	
					2019/8/16	Cloudy	26.2	0.2	21.8	0.0	Dark grayish yellow	None	26	29.8	45	16	<0.80	<0.85	
					2019/9/11	Cloudy	32.4	0.2	25.4	0.0	Grayish yellow green	None	35	21.0	18	8.6	<0.61	<0.74	
					2019/11/25	Sunny	18.7	0.2	11.8	0.0	Light grayish yellow green	None	38	23.2	12	11	<0.74	<0.48	
		2020/1/16	Sunny	2.1	0.2	4.1	0.0	Light grayish yellow green	None	>100	23.0	2	1.7	<0.84	<0.66				
		11	Nakuta River	Tonoda Bridge	Takayama Village	2019/5/15	Sunny	23.3	0.2	18.1	0.0	Grayish greenish yellow	None	>100	12.8	3	1.6	<0.74	<0.66
						2019/8/16	Sunny	29.4	0.3	22.0	0.0	Grayish greenish yellow	None	>100	11.3	10	1.9	<0.82	<0.89
						2019/11/25	Sunny	18.0	0.3	13.1	0.0	Light grayish yellow green	None	>100	9.4	6	2.7	<0.85	<0.66
						2020/1/16	Sunny	4.8	0.3	3.9	0.0	Light grayish yellow green	None	>100	12.0	<1	0.4	<0.85	<0.74
		12	Agatsuma River	Agatsuma Bridge	Shibukawa City	2019/5/14	Sunny	22.6	0.3	19.2	0.0	Light grayish yellow green	None	>100	20.9	3	2.0	<0.83	<0.80
						2019/6/19	Sunny	24.8	0.4	19.8	0.0	Light grayish yellow green	None	>100	18.3	11	3.3	<0.65	<0.90
						2019/7/3	Cloudy	27.2	0.3	20.5	0.0	Light grayish yellow green	None	95	18.0	13	6.0	<0.89	<0.90
						2019/8/27	Cloudy	25.4	0.5	19.5	0.0	Light grayish yellow green	None	48	15.9	17	5.6	<0.87	<0.74
						2019/9/12	Sunny	30.1	0.3	24.1	0.0	Light grayish yellow green	None	60	18.6	15	4.6	<0.52	<0.66
						2019/11/20	Cloudy	7.2	0.4	9.9	0.0	Light grayish yellow green	None	>100	24.3	19	8.7	<0.62	<0.75
						2020/1/16	Sunny	9.1	0.4	8.0	0.0	Light grayish yellow green	None	>100	20.1	2	0.9	<0.92	<0.74
						2019/5/14	Cloudy	21.5	0.3	10.4	0.0	Light grayish yellowish green	None	>100	5.2	3	1.6	<0.79	<0.66
13	Tonegawa River	Taisho Bridge	Shibukawa City	2019/6/19	Sunny	24.2	0.5	13.3	0.0	Light grayish yellow green	None	>100	5.2	7	1.6	<0.74	<0.80		
				2019/7/3	Cloudy	27.7	0.3	16.4	0.0	Light grayish yellow green	None	>100	7.0	3	4.3	<0.78	<0.85		
				2019/8/27	Sunny	27.1	0.5	19.3	0.0	Light grayish yellow	None	25	7.9	90	38	<0.68	<0.80		
				2019/9/12	Sunny	30.2	0.4	22.4	0.0	Grayish yellow green	None	>100	6.5	5	1.7	<0.77	<0.74		
				2019/11/20	Cloudy	8.1	0.5	11.3	0.0	Light grayish yellow green	None	>100	13.4	11	4.0	<0.69	<0.47		
				2020/1/16	Sunny	9.6	0.5	8.4	0.0	Light grayish yellowish green	None	>100	10.0	1	0.6	<0.83	<0.92		
14	Takizawa River	Shintakizawa Bridge	Shibukawa City/Yoshioka Town	2019/5/14	Cloudy	20.2	0.1	15.5	0.0	Light grayish yellow green	None	>100	15.7	3	1.2	<0.88	<0.85		
				2019/8/27	Cloudy	28.1	0.2	22.8	0.0	Light grayish yellow	None	24	20.3	100	45	<0.90	<0.80		
				2019/11/20	Cloudy	11.9	0.2	12.1	0.0	Light grayish greenish yellow	None	>100	20.8	13	6.3	<0.61	<0.61		
				2020/1/16	Sunny	9.8	0.2	8.1	0.0	Light grayish yellow green	None	>100	22.8	8	2.8	<0.88	<0.87		
				2019/5/8	Sunny	19.1	0.5	9.5	0.0	Light grayish yellow green	None	78	9.9	7	5.3	<0.81	<0.74		
15	Tonegawa River	Gunma-ohashi Bridge	Maebashi City	2019/8/7	Sunny	35.1	0.2	21.2	0.0	Dark grayish reddish yellow	None	25	13.7	20	9.5	<0.72	<0.61		
				2019/11/7	Cloudy	19.6	0.6	11.9	0.0	Light grayish yellow green	None	>100	16.1	12	7.2	<0.67	<0.71		
				2020/1/16	Sunny	7.3	0.3	4.6	0.0	Light grayish yellow green	None	>100	17.7	6	3.1	<0.83	<0.78		
				2019/5/9	Sunny	17.2	0.8	12.2	0.0	Grayish yellow green	None	85	10.3	9	3.9	<0.69	<0.67		
16	Tonegawa River	Fukushima Bridge	Tamamura Town	2019/8/7	Sunny	31.2	0.3	21.6	0.0	Dark grayish reddish yellow	None	25	15.9	42	19	<0.75	<0.55		
				2019/11/16	Sunny	12.4	0.2	10.4	0.0	Grayish yellow green	None	53	17.5	13	6.2	<0.75	<0.75		
				2020/1/17	Sunny	5.5	0.2	5.2	0.0	Light grayish yellow green	None	80	17.9	7	3.3	<0.74	<0.92		
				2019/5/24	Sunny	23.8	0.2	19.5	0.0	Light grayish yellow	None	>100	11.9	2	1.1	<0.89	<0.90		
				2019/8/27	Sunny	21.1	0.3	17.5	0.0	Light grayish yellow	None	40	12.8	18	5.4	<0.65	<0.90		
17	Nagai River	Kamigonda Bridge	Takasaki City	2019/11/25	Sunny	19.1	0.3	13.2	0.0	Light grayish yellow	None	>100	12.8	10	5.0	<0.80	<0.74		
				2020/1/17	Sunny	7.2	0.2	8.5	0.0	Light grayish yellow	None	>100	11.8	<1	0.2	<0.81	<0.55		
				2019/5/24	Sunny	26.2	0.3	18.0	0.0	Light grayish greenish yellow	None	>100	12.2	2	0.7	<0.79	<0.89		
				2019/8/27	Sunny	23.3	0.3	18.2	0.0	Grayish yellow	None	57	9.4	15	4.1	<0.59	<0.80		
18	Karasu River	Karasugawa Bridge	Takasaki City	2019/11/25	Sunny	18.3	0.2	12.3	0.0	Light grayish yellow	None	>100	11.0	2	2.2	<0.62	<0.78		
				2020/1/17	Sunny	9.1	0.3	7.8	0.0	Light grayish greenish yellow	None	>100	12.0	4	0.4	<0.81	<0.92		
				2019/5/21	Rain	19.4	0.4	16.5	0.0	Grayish yellow	None	32	13.6	92	27	<0.79	<0.80		
				2019/8/19	Cloudy	28.5	0.2	23.0	0.0	Light grayish yellow green	None	>100	14.9	4	1.7	<0.78	<0.90		
19	Usui River	Nakase Bridge	Amaka City	2019/11/5	Sunny	19.5	0.2	13.4	0.0	Light grayish yellow green	None	>100	14.8	3	2.1	<0.87	<0.66		
				2020/1/15	Sunny	11.0	0.2	7.5	0.0	Light grayish yellow green	None	>100	17.9	1	0.6	<0.74	<0.74		

Gunma River (Water) 3/5

Location				Sampling Date	Weather	Air temperature (°C)	Water depth (m)	Water								Remarks			
No.	Water area	Location	Municipality					General items									Activity concentration(Bq/L)		
								Water temperature (°C)	Sampling depth (m)	Color	Odor	Transparency (cm)	Electrical conductivity (mS/m)	SS (mg/L)	Turbidity (FNU)		Radioactive cesium Cs-134	Cs-137	
R i v e r s	Tonegawa River System	Karasu River Area	Usui River	Hanataka Bridge	Takasaki City	2019/5/9	Cloudy	24.1	1.2	19.0	0.0	Grayish yellow green	None	>100	38.6	5	2.7	<0.64	<0.74
						2019/8/27	Sunny	29.2	0.3	24.0	0.0	Grayish yellow green	None	>100	27.0	11	5.1	<0.82	<0.74
						2019/11/5	Sunny	19.1	0.3	14.3	0.0	Dark grayish green	None	>100	27.8	1	1.0	<0.86	<0.75
						2020/1/15	Sunny	12.9	0.2	9.6	0.0	Dark grayish yellow green	None	>100	52.0	3	1.5	<0.71	<0.87
		21	Kabura River	Tadakawa Bridge	Shimonita Town	2019/5/20	Cloudy	22.1	0.5	21.9	0.0	Light grayish yellow green	None	>100	33.1	2	0.8	<0.83	<0.80
						2019/8/19	Cloudy	30.3	0.2	24.1	0.0	Light grayish yellow	None	>100	22.2	3	0.9	<0.86	<0.87
						2019/11/6	Sunny	13.3	0.2	10.2	0.0	Light grayish yellow green	None	40	23.8	24	14	<0.52	<0.74
						2020/1/15	Sunny	9.1	0.2	6.2	0.0	Light grayish yellow	None	>100	33.5	1	0.6	<0.72	<0.87
		22	Kabura River	Kaburagawa Bridge	Takasaki City/Fujioka City	2019/5/13	Sunny	23.5	0.4	22.1	0.0	Light grayish yellow green	None	50	34.6	4	2.5	<0.70	<0.85
						2019/8/27	Cloudy	29.6	0.3	25.9	0.0	Light grayish yellow green	None	83	23.9	13	4.7	<0.65	<0.67
						2019/11/16	Sunny	20.5	0.2	14.4	0.0	Light grayish yellow green	None	>100	27.6	7	1.7	<0.75	<0.71
						2020/1/17	Sunny	9.1	0.2	7.1	0.0	Light grayish yellow green	None	>100	38.0	8	2.0	<0.81	<0.70
		23	Ogawa River	Kinzan Bridge	Karra Town	2019/5/20	Sunny	23.7	0.2	18.7	0.0	Light grayish yellow green	None	>100	20.5	1	0.6	<0.58	<0.67
						2019/8/19	Cloudy	31.3	0.2	22.9	0.0	Light grayish yellow green	None	>100	20.7	2	0.8	<0.88	<0.80
						2019/11/6	Sunny	16.6	0.2	12.4	0.0	Light grayish yellow green	None	>100	15.3	3	0.4	<0.55	<0.66
						2020/1/15	Sunny	8.2	0.2	9.6	0.0	Light grayish yellow green	None	>100	20.3	3	0.6	<0.48	<0.66
		24	Nannoku River	Ozawa Bridge	Nannoku Village	2019/5/20	Cloudy	20.7	0.3	19.9	0.0	Light grayish yellow green	None	>100	23.5	<1	0.3	<0.75	<0.90
						2019/8/19	Cloudy	26.2	0.2	23.1	0.0	Grayish yellow green	None	>100	17.7	<1	0.5	<0.59	<0.90
						2019/11/5	Sunny	16.4	0.2	11.9	0.0	Grayish greenish yellow	None	26	16.5	29	22	<0.81	<0.54
						2020/1/15	Sunny	5.6	0.2	4.6	0.0	Grayish yellow green	None	>100	25.5	1	0.5	<0.80	<0.92
		25	Someya River	Yakushi Bridge	Shinto Village	2019/5/14	Cloudy	19.8	0.1	17.2	0.0	Grayish greenish yellow	None	>100	27.1	9	2.9	<0.77	<0.90
						2019/8/27	Cloudy	26.8	0.2	23.4	0.0	Grayish greenish yellow	None	75	16.7	16	2.4	<0.92	<0.90
						2019/11/5	Sunny	17.4	0.2	13.7	0.0	Grayish greenish yellow	None	>100	25.1	3	1.0	<0.69	<0.66
						2020/1/17	Sunny	11.6	0.2	7.1	0.0	Grayish greenish yellow	None	>100	26.3	6	1.6	<0.92	<0.92
		26	Inogawa River	Kamakura Bridge	Takasaki City	2019/5/13	Sunny	24.2	0.2	23.8	0.0	Grayish greenish yellow	None	58	36.8	14	4.1	<0.91	<0.85
						2019/8/27	Sunny	28.8	0.3	25.1	0.0	Grayish greenish yellow	None	65	23.1	11	3.6	<0.89	<0.90
						2019/11/16	Sunny	14.3	0.3	12.3	0.0	Light grayish greenish yellow	None	>100	37.8	23	7.1	<0.51	<0.66
						2020/1/17	Sunny	6.1	0.2	8.5	0.0	Light grayish yellow green	None	>100	45.8	6	1.6	<0.63	<0.66
		27	Karasu River	Iwakura Bridge	Takasaki City/Tamamura Town	2019/5/9	Sunny	19.1	0.3	19.2	0.0	Light grayish greenish yellow	None	55	38.2	11	6.9	<0.65	<0.80
						2019/8/27	Cloudy	28.9	0.3	24.9	0.0	Light grayish yellow	None	22	36.3	130	29	<0.76	<0.90
						2019/11/16	Sunny	17.2	0.2	15.3	0.0	Light grayish yellow	None	53	33.1	9	3.5	<0.80	<0.66
						2020/1/17	Sunny	8.2	0.2	9.1	0.0	Light grayish yellow	None	63	34.4	7	2.2	<0.69	<0.92
28	Kanna River	Shinkaname Bridge	Ueno Village	2019/5/20	Cloudy	21.0	0.3	16.0	0.0	Light grayish yellow green	None	>100	16.8	3	0.6	<0.77	<0.80		
				2019/11/6	Sunny	14.5	0.2	11.2	0.0	Light grayish yellow green	None	32	14.1	15	15	<0.60	<0.66		
				2019/5/20	Sunny	20.2	0.4	20.3	0.0	Light grayish yellow green	None	>100	18.3	<1	0.3	<0.69	<0.80		
				2019/11/6	Sunny	16.6	0.3	11.4	0.0	Light grayish yellow green	None	29	15.5	36	28	<0.95	<0.61		
29	Kanna River	Morito Bridge	Kanna Town	2019/5/9	Cloudy	24.1	0.7	16.2	0.0	Light grayish yellow green	None	>100	24.1	2	0.8	<0.79	<0.90		
				2019/11/16	Sunny	20.5	0.2	14.8	0.0	Grayish yellow green	None	22	18.2	47	45	<0.61	<0.66		
				2019/5/9	Sunny	22.1	0.2	17.3	0.0	Light grayish greenish yellow	None	>100	23.3	2	0.8	<0.57	<0.55		
				2019/11/16	Sunny	18.0	0.2	14.3	0.0	Light grayish greenish yellow	None	23	18.4	45	23	<0.52	<0.55		
30	Kanna River	Tobakyo Bridge	Fujioka City/Kamisato Town	2019/5/9	Cloudy	24.1	0.7	16.2	0.0	Light grayish yellow green	None	>100	24.1	2	0.8	<0.79	<0.90		
				2019/11/16	Sunny	20.5	0.2	14.8	0.0	Grayish yellow green	None	22	18.2	47	45	<0.61	<0.66		
				2019/5/9	Sunny	22.1	0.2	17.3	0.0	Light grayish greenish yellow	None	>100	23.3	2	0.8	<0.57	<0.55		
				2019/11/16	Sunny	18.0	0.2	14.3	0.0	Light grayish greenish yellow	None	23	18.4	45	23	<0.52	<0.55		
31	Kanna River	Kannagawa Bridge	Kamisato Town	2019/5/9	Cloudy	24.1	0.7	16.2	0.0	Light grayish yellow green	None	>100	24.1	2	0.8	<0.79	<0.90		
				2019/11/16	Sunny	20.5	0.2	14.8	0.0	Grayish yellow green	None	22	18.2	47	45	<0.61	<0.66		
				2019/5/9	Sunny	22.1	0.2	17.3	0.0	Light grayish greenish yellow	None	>100	23.3	2	0.8	<0.57	<0.55		
				2019/11/16	Sunny	18.0	0.2	14.3	0.0	Light grayish greenish yellow	None	23	18.4	45	23	<0.52	<0.55		
32	Tonegawa River Area	Tonegawa River	Bando-ohashi Bridge	Honjo City	2019/5/10	Sunny	24.6	0.3	13.1	0.0	Light grayish yellow green	None	>100	15.8	7	3.1	<0.67	<0.85	
					2019/8/8	Sunny	33.8	0.5	25.8	0.0	Light grayish greenish yellow	None	21	23.4	54	24	<0.64	<0.61	
					2019/11/9	Sunny	13.4	0.2	15.6	0.0	Light grayish yellow green	None	55	28.8	6	4.9	<0.77	<0.66	
					2020/1/7	Sunny	7.7	0.2	12.7	0.0	Light grayish yellow green	None	>100	30.3	11	3.0	<0.76	<0.92	

Gunma River (Water) 4/5

Location				Sampling Date	Weather	Air temperature (°C)	Water depth (m)	Water								Remarks			
No.	Water area	Location	Municipality					General items					Activity concentration(Bq/L)						
								Water temperature (°C)	Sampling depth (m)	Color	Odor	Transparency (cm)	Electrical conductivity (mS/m)	SS (mg/L)	Turbidity (FNU)		Radioactive cesium Cs-134	Cs-137	
R i v e r s	33	Akagishirakawa River	In Shimohosoi Town	Maebashi City	2019/5/8	Sunny	21.2	0.2	13.1	0.0	Light grayish yellow green	None	>100	22.6	2	1.4	<0.84	<0.61	
					2019/8/7	Sunny	35.3	0.2	26.5	0.0	Light grayish yellow green	None	>100	25.2	8	1.7	<0.81	<0.54	
					2019/11/7	Cloudy	18.7	0.3	16.2	0.0	Light grayish yellow green	None	>100	29.6	7	0.8	<0.57	<0.75	
					2020/1/6	Sunny	12.1	0.3	7.2	0.0	Light grayish yellow green	None	>100	20.2	3	1.1	<0.78	<0.87	
		34	Momonoki River	Utsubo Bridge	Maebashi City	2019/5/8	Sunny	22.2	0.2	12.5	0.0	Light grayish yellow green	None	>100	16.3	8	4.8	<0.92	<0.90
						2019/8/7	Sunny	38.0	0.2	27.2	0.0	Light grayish yellow green	None	40	21.0	11	5.6	<0.49	<0.61
						2019/11/7	Sunny	17.7	0.3	13.3	0.0	Light grayish yellow green	None	>100	26.5	3	1.6	<0.61	<0.75
						2020/1/16	Sunny	10.1	0.2	11.7	0.0	Light grayish yellow green	None	>100	24.9	3	1.3	<0.69	<0.80
		35	Arato River	Okuhara Bridge	Maebashi City	2019/5/8	Sunny	23.5	0.2	17.1	0.0	Light grayish yellow green	None	48	30.4	16	6.8	<0.79	<0.90
						2019/8/7	Sunny	37.7	0.3	27.6	0.0	Light grayish yellow green	None	70	26.5	9	2.3	<0.68	<0.54
						2019/11/7	Sunny	16.2	0.3	13.9	0.0	Light grayish greenish yellow	None	>100	29.0	5	0.6	<0.82	<0.75
						2020/1/16	Sunny	10.2	0.2	6.5	0.0	Light grayish yellow green	None	43	27.6	12	4.5	<0.64	<0.66
	36	Kasukawa River	Hozumi Bridge	Iesaki City	2019/5/10	Sunny	27.2	0.2	19.3	0.0	Grayish yellow green	None	66	28.2	12	4.2	<0.65	<0.70	
					2019/8/8	Sunny	31.1	0.5	26.3	0.0	Grayish yellow green	None	38	30.7	7	4.1	<0.57	<0.47	
					2019/11/7	Sunny	14.8	0.3	13.6	0.0	Light grayish yellow green	None	>100	36.0	4	1.5	<0.61	<0.61	
					2020/1/16	Sunny	11.0	0.2	10.2	0.0	Grayish yellow green	None	39	40.2	12	6.3	<0.87	<0.74	
	37	Hirose River	Nakajima Bridge	Iesaki City	2019/5/10	Sunny	28.5	0.2	18.3	0.0	Light grayish greenish yellow	None	65	22.8	9	4.1	<0.81	<0.90	
					2019/8/8	Sunny	35.4	0.4	26.3	0.0	Light grayish yellow green	None	56	24.2	10	3.0	<0.68	<0.66	
					2019/11/9	Sunny	15.5	0.3	14.5	0.0	Light grayish yellow green	None	>100	31.7	6	1.4	<0.75	<0.61	
					2020/1/7	Cloudy	8.2	0.2	7.2	0.0	Light grayish greenish yellow	None	>100	34.5	11	3.1	<0.76	<0.66	
	38	Hayakawa River	Hayakawa Bridge	Iesaki City	2019/5/8	Sunny	25.6	0.4	15.4	0.0	Light grayish yellow green	None	62	13.6	18	7.1	<0.74	<0.55	
					2019/8/7	Sunny	39.8	0.3	25.3	0.0	Grayish reddish yellow	None	25	16.3	37	12	<0.76	<0.75	
					2019/11/7	Sunny	15.9	0.3	15.0	0.0	Light grayish greenish yellow	None	>100	23.0	3	0.7	<0.52	<0.66	
					2020/1/16	Sunny	12.0	0.3	11.9	0.0	Light grayish yellow green	None	>100	34.7	4	1.4	<0.69	<0.55	
	39	Tonegawa River System	Macjima Bridge	Ota City	2019/5/10	Sunny	28.4	0.4	17.8	0.0	Grayish greenish yellow	None	50	20.3	32	11	<0.69	<0.85	
					2019/8/8	Sunny	36.2	0.3	27.8	0.0	Grayish greenish yellow	None	73	30.9	12	2.3	<0.68	<0.47	
					2019/11/9	Sunny	15.1	0.3	16.3	0.0	Grayish yellow	None	>100	44.3	3	0.9	<0.57	<0.79	
					2020/1/7	Cloudy	8.2	0.2	8.3	0.0	Grayish greenish yellow	None	>100	45.6	6	2.8	<0.62	<0.87	
	40	Tonegawa River	Tone-ozeki Weir	Chiyoda Town/Gyoda City	2019/5/10	Sunny	28.6	0.3	18.4	0.0	Grayish greenish yellow	None	62	15.1	5	4.1	<0.62	<0.70	
					2019/6/13	Sunny	29.0	0.7	23.7	0.0	Grayish yellow green	None	75	18.6	6	3.7	<0.84	<0.70	
					2019/7/9	Cloudy	21.2	0.3	19.5	0.0	Grayish greenish yellow	None	50	21.4	55	26	<0.78	<0.74	
					2019/8/8	Sunny	36.8	0.5	29.9	0.0	Grayish greenish yellow	None	44	21.3	8	4.1	<0.83	<0.80	
					2019/9/3	Cloudy	27.6	0.2	22.6	0.0	Grayish greenish yellow	None	36	20.8	53	18	<0.62	<0.67	
					2019/11/9	Sunny	17.6	0.2	16.0	0.0	Grayish yellow green	None	30	26.5	43	5.6	<0.42	<0.75	
					2020/1/7	Cloudy	9.1	0.2	7.5	0.0	Grayish greenish yellow	None	23	25.4	30	15	<0.62	<0.97	
					2019/5/7	Sunny	12.2	0.5	11.1	0.0	Light grayish yellow green	None	>100	6.7	<1	0.4	<0.67	<0.67	
	41	Koguro River	Kayano Bridge	Kiryu City	2019/6/13	Sunny	17.7	0.6	12.5	0.0	Light grayish yellow green	None	>100	7.1	<1	0.1	<0.67	<0.61	
					2019/7/9	Cloudy	15.8	0.3	13.2	0.0	Grayish yellow green	None	>100	6.6	4	1.8	<0.66	<0.80	
					2019/8/1	Sunny	29.0	0.4	17.5	0.0	Grayish yellow green	None	>100	6.3	2	0.6	<0.77	<0.85	
					2019/9/4	Cloudy	20.1	0.2	17.2	0.0	Light grayish yellow green	None	>100	7.3	3	1.4	<0.71	<0.89	
					2019/11/22	Cloudy	7.8	0.3	7.8	0.0	Light grayish yellow green	None	>100	7.8	4	2.5	<0.56	<0.55	
					2020/1/6	Sunny	3.3	0.3	3.9	0.0	Grayish yellow green	None	>100	8.1	<1	0.2	<0.72	<0.92	
2019/5/10					Sunny	26.5	0.3	15.4	0.0	Light grayish yellow green	None	>100	10.1	2	1.0	<0.77	<0.81		
2019/8/15					Cloudy	27.4	0.3	21.8	0.0	Light grayish yellow green	None	72	9.4	8	2.4	<0.78	<0.74		
42	Watarase River Area	Takatsudo	Kiryu City	2019/11/11	Sunny	13.5	0.2	13.0	0.0	Light grayish yellowish green	None	50	9.4	3	4.2	<0.69	<0.71		
				2020/1/6	Sunny	9.1	0.2	7.3	0.0	Light grayish yellow green	None	>100	11.1	1	0.6	<0.73	<0.74		
				2019/5/10	Sunny	28.6	0.2	18.3	0.0	Light grayish greenish yellow	None	>100	10.1	5	2.0	<0.86	<0.85		
				2019/6/13	Sunny	25.3	0.4	17.2	0.0	Light grayish yellow green	None	>100	8.9	2	0.8	<0.76	<0.66		
		43	Watarase River	Intake for Akaiwayosui water channel	Kiryu City	2019/7/9	Cloudy	21.0	0.3	16.8	0.0	Light grayish greenish yellow	None	>100	9.0	3	2.0	<0.87	<0.94
						2019/8/15	Cloudy	29.2	0.2	22.7	0.0	Light grayish greenish yellow	None	75	9.6	7	2.4	<0.73	<0.85
						2019/9/4	Cloudy	26.5	0.2	19.9	0.0	Light grayish greenish yellow	None	>100	9.2	5	1.8	<0.74	<0.85
						2019/11/11	Cloudy	15.2	0.2	13.3	0.0	Light grayish yellow green	None	66	9.8	3	1.9	<0.69	<0.71
2020/1/7	Sunny	4.3	0.2	5.6	0.0	Light grayish greenish yellow	None	>100	11.5	<1	0.3	<0.70	<0.92						

Gunma River (Water) 5/5

Location					Sampling Date	Weather	Air temperature (°C)	Water depth (m)	Water								Remarks			
No.	Water area		Location	Municipality					General items				Activity concentration(Bq/L)							
									Water temperature (°C)	Sampling depth (m)	Color	Odor	Transparency (cm)	Electrical conductivity (mS/m)	SS (mg/L)	Turbidity (FNU)		Radioactive cesium		
				Cs-134	Cs-137															
R i v e r s	44	Tonegawa River System	Watarase River Area	Tatara River	Ejiri Bridge	Oura Town	2019/5/9	Cloudy	19.8	1.2	17.1	0.0	Grayish greenish yellow	None	88	19.0	9	4.1	<0.74	<0.61
							2019/8/28	Cloudy	24.3	0.9	23.5	0.0	Grayish greenish yellow	None	80	19.4	9	2.2	<0.68	<0.80
							2019/11/11	Sunny	16.6	0.2	16.6	0.0	Light grayish yellow	None	>100	32.3	18	7.1	<0.86	<0.61
							2020/1/21	Sunny	11.0	0.2	6.8	0.0	Grayish greenish yellow	None	66	40.7	6	3.4	<0.61	<0.89
	45	Tonegawa River System	Watarase River Area	Kiryu River	Kannon Bridge	Kiryu City	2019/5/10	Sunny	22.1	0.4	14.2	0.0	Light grayish yellow green	None	>100	8.1	11	1.7	<0.88	<0.85
							2019/8/15	Cloudy	33.6	0.4	21.6	0.0	Light grayish yellow green	None	>100	7.7	2	1.0	<0.89	<0.85
							2019/11/11	Cloudy	13.4	0.2	13.0	0.0	Light grayish yellow green	None	>100	8.0	4	1.4	<0.75	<0.71
							2020/1/6	Sunny	11.0	0.2	7.4	0.0	Light grayish yellow green	None	>100	9.2	<1	0.2	<0.91	<0.55
	46	Tonegawa River System	Watarase River Area	Kiryu River	Sakai Bridge	Kiryu City/Ashikaga City	2019/5/10	Sunny	28.8	0.3	21.6	0.0	Light grayish greenish yellow	None	>100	9.9	4	1.5	<0.58	<0.85
							2019/8/15	Sunny	31.4	0.3	25.1	0.0	Light grayish greenish yellow	None	>100	9.4	6	2.1	<0.65	<0.67
							2019/11/11	Cloudy	13.4	0.3	13.0	0.0	Light grayish greenish yellow	None	>100	8.6	2	0.8	<0.57	<0.54
							2020/1/21	Sunny	8.2	0.3	5.1	0.0	Light grayish greenish yellow	None	>100	11.8	<1	0.3	<0.61	<0.70
	47	Tonegawa River System	Watarase River Area	Tsuruuda River	Lake Jonuma	Tatebayashi City	2019/5/9	Cloudy	19.2	0.8	18.9	0.0	Grayish yellow green	None	52	38.6	17	14	<0.88	<0.67
							2019/8/28	Rain	26.5	0.9	25.5	0.0	Dark grayish yellow green	None	39	32.2	2	1.7	<0.68	<0.80
							2019/11/9	Sunny	18.8	1.0	17.9	0.0	Grayish yellow green	None	37	43.3	13	8.5	<0.75	<0.71
							2020/1/21	Sunny	10.8	1.1	6.1	0.0	Grayish yellow green	None	25	38.5	16	10	<0.81	<0.80
	48	Tonegawa River System	Watarase River Area	Yatagawa River	Togoda Bridge	Meiwa Town/Itakura Town	2019/5/9	Cloudy	18.8	1.0	18.2	0.0	Grayish greenish yellow	None	72	60.5	12	7.6	<0.89	<0.74
							2019/8/28	Cloudy	26.5	1.1	25.1	0.0	Dark grayish yellow green	None	69	34.1	5	3.1	<0.82	<0.88
							2019/11/9	Sunny	18.7	1.2	18.7	0.0	Dark grayish yellow green	None	75	56.3	23	11	<0.67	<0.61
							2020/1/21	Sunny	11.1	1.2	10.0	0.0	Grayish yellow green	None	70	73.2	8	3.5	<0.42	<0.55

Gunma River (Sediment) 1/5

No.	Location			Sampling Date	Weather	Air temperature (°C)	Water depth (m)	Sediment														Activity concentration [Bq/kg(dry)]			Remarks							
	Water area	Location	Municipality					Sediment temperature (°C)	Sample length (cm)	Color	Odor	Grain size distribution(%)					Sediment content (%)	Density (g/cm ³)	Property	Radionuclide cesium												
												Coarse gravel	Medium gravel	Fine gravel	Coarse sand	Medium sand				Fine sand	Silt	Clay	Cs-134	Cs-137		Total						
R i v e r s y s t e m	1	Tonegawa River	Hinose Bridge	Minakami Town	2019/5/27	Sunny	29.2	0.4	8.9	7	Yellowish brown	None	0.0	28.0	4.9	4.1	37.2	17.0	4.7	4.0	75.3	2.676	Sand	<5.4	78	78						
					2019/8/2	Sunny	31.5	0.2	22.0	7	Yellowish brown	None	0.0	0.9	1.0	29.6	61.8	3.8	0.6	2.3	68.9	2.668	Sand	<5.2	32	32						
					2019/11/22	Sunny	8.5	0.5	10.5	5	Yellowish brown	None	0.0	0.0	1.8	17.1	68.9	8.2	1.0	3.0	70.9	2.676	Sand	<7.2	26	26						
					2020/1/6	Sunny	2.0	0.2	5.9	5	Yellowish brown	None	0.0	1.5	44.9	24.4	19.0	7.3	2.1	0.0	0.9	83.1	2.669	Sand/gravel	<3.8	19	19					
					2019/5/14	Cloudy	22.0	0.3	10.3	5	Dark olive	None	0.0	0.9	2.2	11.6	58.7	20.7	2.1	3.8	74.0	2.723	Sand	<5.6	18	18						
					2019/6/19	Cloudy	27.8	0.5	11.8	6	Dark olive	None	0.0	30.6	8.7	10.3	37.4	11.3	0.0	1.8	78.0	2.787	Sand/gravel	<4.2	16	16						
		2	Tateyama River	Tsakiyeno Bridge	Minakami Town	2019/7/3	Sunny	25.3	0.2	13.0	5	Dark olive	None	0.0	24.7	34.1	29.9	10.6	0.4	0.0	0.4	82.9	2.695	Gravel/sand	<3.5	17	17					
						2019/8/16	Sunny	29.6	0.2	19.4	5	Dark olive	None	0.0	39.9	27.7	18.6	12.3	0.6	0.0	0.9	81.0	2.692	Gravel/sand	<5.3	11	11					
						2019/9/11	Sunny	28.7	0.3	14.3	5	Grayish olive	None	0.0	30.2	36.5	19.3	9.9	2.9	0.3	1.0	80.1	2.651	Gravel/sand	<5.6	15	15					
						2019/11/22	Sunny	10.0	0.5	9.3	5	Dull reddish brown	None	0.0	2.0	9.8	40.3	41.6	3.7	0.1	2.6	73.5	2.683	Sand	<8.1	24	24					
						2020/1/6	Sunny	6.1	0.2	6.9	5	Dark olive	None	0.0	0.1	0.8	10.1	68.0	17.0	1.7	2.3	74.6	2.662	Sand	<6.4	14	14					
						2019/5/14	Cloudy	23.3	0.2	10.8	5	Olive brown	None	0.0	1.3	2.6	11.9	61.1	14.2	5.7	3.2	69.6	2.659	Sand	<5.5	15	15					
	3	Akaya River	Kosode Bridge	Kawaba Village	2019/8/16	Sunny	29.0	0.2	23.9	5	Dark grayish yellow	None	0.0	0.0	0.1	2.7	64.7	26.3	2.8	3.4	68.1	2.641	Sand	<6.5	13	13						
					2019/11/22	Cloudy	10.1	0.2	8.0	5	Dark grayish yellow	None	0.0	0.4	4.0	31.8	58.2	2.6	0.1	2.9	72.5	2.683	Sand	<6.4	7.6	7.6						
					2020/1/6	Sunny	7.2	0.2	4.2	5	Olive brown	None	0.0	1.1	2.6	47.7	43.5	2.1	0.1	2.8	72.7	2.661	Sand	<3.6	4.7	4.7						
					2019/5/7	Sunny	11.4	0.3	8.2	3	Grayish yellowish brown	None	0.0	34.3	39.5	16.7	7.5	0.9	0.1	1.0	70.9	2.739	Sand/gravel	<6.3	69	69						
	4	Sakura River	In Oouza Yachi	Kawaba Village	2019/6/19	Sunny	25.8	0.2	13.0	6	Olive brown	None	0.0	24.9	53.7	18.7	1.7	0.2	0.2	0.6	80.5	2.693	Gravel/sand	<6.0	64	64						
					2019/7/3	Cloudy	23.8	0.2	15.0	5	Olive brown	None	0.0	26.7	29.7	22.2	19.2	1.3	0.1	0.8	77.9	2.899	Gravel/sand	<3.8	59	59						
					2019/8/2	Sunny	32.8	0.3	19.2	7	Olive brown	None	0.0	35.8	24.9	18.7	16.9	2.6	0.1	1.1	79.2	2.878	Gravel/sand	3.9	59	62.9						
					2019/9/11	Sunny	28.7	0.2	17.8	5	Dark grayish yellow	None	0.0	14.3	39.4	25.4	15.8	3.6	0.7	0.9	82.0	2.764	Gravel/sand	<5.4	53	53						
					2019/11/22	Cloudy	10.0	0.2	6.6	5	Dark grayish yellow	None	0.0	41.2	35.7	16.8	5.1	0.6	0.0	0.7	75.1	2.775	Gravel/sand	<5.3	62	62						
					2020/1/7	Cloudy	4.3	0.2	3.5	5	Dark grayish yellow	None	0.0	65.2	29.1	4.5	0.7	0.1	0.1	0.3	85.0	2.672	Gravel/sand	<6.3	40	40						
					5	Tonegawa River System	Tonegawa River Area	Kinokuni Bridge	Katashima Village	2019/5/30	Sunny	20.0	0.3	10.0	5	Olive brown	None	0.0	2.3	19.7	12.8	19.9	38.0	4.7	0.7	1.9	74.1	2.685	Gravel/sand	<5.8	9.7	9.7
										2019/8/16	Cloudy	23.6	0.3	20.8	5	Dark grayish yellow	None	1.8	33.4	21.1	20.1	21.4	0.9	0.1	1.3	79.2	2.693	Sand/gravel	<6.4	8.2	8.2	
										2019/11/19	Sunny	10.0	0.2	9.4	5	Dark grayish yellow	None	0.0	0.0	1.5	18.5	58.7	17.3	1.1	2.9	72.8	2.657	Sand	<6.7	18	18	
										2020/1/7	Sunny	1.2	0.2	2.0	5	Olive brown	None	0.0	27.7	16.7	17.8	28.9	6.7	0.1	2.2	78.4	2.656	Sand	<5.5	5.7	5.7	
										2019/5/30	Sunny	25.5	0.2	14.8	5	Grayish olive	None	0.0	10.0	1.9	3.0	57.1	24.6	0.9	2.6	73.4	2.806	Sand	<3.7	6.6	6.6	
										2019/6/14	Sunny	24.4	0.2	17.2	5	Grayish olive	None	0.0	23.9	7.4	7.1	48.3	10.6	0.7	2.0	75.6	2.747	Sand/gravel	<3.0	5.7	5.7	
	6	Katashima River	Tomemachikataya	Numata City	2019/7/5	Cloudy	22.8	0.3	16.1	5	Dull yellowish brown	None	0.0	1.1	0.8	3.1	30.7	33.1	24.0	7.3	61.9	2.662	Sand	<5.3	20	20						
					2019/8/16	Sunny	27.4	0.4	20.5	5	Grayish olive	None	0.0	2.6	0.9	2.3	39.8	33.4	15.8	5.2	68.0	2.665	Sand	<8.0	20	20						
					2019/9/13	Cloudy	19.1	0.2	17.6	4	Dark olive	None	0.0	0.0	0.0	2.3	47.4	38.9	7.1	4.4	77.3	2.716	Sand/silt	<5.6	10	10						
					2019/11/19	Sunny	14.8	0.3	11.4	5	Grayish olive	None	0.0	0.0	0.1	1.2	65.2	28.3	1.8	3.4	71.6	2.761	Sand	<5.2	7.4	7.4						
					2020/1/7	Sunny	4.3	0.3	3.0	5	Grayish olive	None	0.0	0.3	1.2	2.2	35.8	53.5	1.7	5.4	71.6	2.740	Sand	<6.1	7.6	7.6						
					2019/5/14	Cloudy	21.0	0.3	13.5	5	Dark grayish yellow	None	0.0	6.4	2.1	7.9	51.6	24.4	3.3	4.4	71.9	2.910	Sand	<5.8	22	22						
					7	Futae Bridge	Futae Bridge	Nakanojo Town	2019/6/19	Sunny	25.3	0.5	16.0	5	Dark grayish yellow	None	6.2	63.8	16.1	7.0	5.4	0.6	0.4	0.5	80.3	3.061	Gravel/sand	<4.1	8.7	8.7		
									2019/7/3	Cloudy	26.4	0.3	16.9	5	Dark grayish yellow	None	0.0	31.3	19.2	15.1	27.5	5.0	0.5	1.4	76.8	3.027	Gravel	<4.3	19	19		
									2019/8/16	Sunny	31.4	0.5	25.3	5	Dark grayish yellow	None	0.0	0.5	3.3	14.3	64.1	14.0	0.6	3.2	70.9	2.859	Sand	<6.5	29	29		
									2019/9/11	Sunny	30.2	0.2	19.6	5	Blackish brown	None	0.0	0.4	2.0	11.8	70.8	11.0	1.6	2.3	65.0	2.741	Sand	<6.4	28	28		
									2019/11/20	Cloudy	6.5	0.5	11.5	5	Dark grayish yellow	None	0.0	5.4	16.8	23.7	44.3	7.8	0.3	1.9	78.5	3.129	Gravel/sand	<6.9	8.0	8.0		
									2020/1/7	Cloudy	6.2	0.5	6.0	5	Dark grayish yellow	None	0.0	12.0	16.9	17.7	40.4	10.3	0.1	2.6	81.4	3.078	Sand	<4.1	13	13		
	8	Agatsuma River	Shioto Bridge	Naganojima Town	2019/5/23	Sunny	25.2	0.5	18.0	6	Dark brown	None	0.0	0.0	0.2	9.7	74.8	11.5	1.5	2.3	71.4	2.808	Sand	<3.0	4.4	4.4						
					2019/8/26	Sunny	27.7	0.2	17.7	5	Dark brown	None	0.0	0.0	0.1	8.2	51.0	33.3	7.4	59.3	2.561	Sand	<6.8	13	13							
2019/11/25					Sunny	15.9	0.3	11.7	5	Dark brown	None	0.0	0.0	0.0	0.0	15.5	66.3	12.9	5.3	69.2	2.736	Sand	<5.4	7.9	7.9							
2020/1/17					Sunny	4.0	0.4	3.4	5	Dark brown	None	0.0	0.0	0.0	0.1	8.9	59.6	22.7	8.6	61.2	2.684	Sand	<5.6	15	15							
9	Shimsu River	Shattatsu Bridge	Nakanojo Town	2019/5/23	Sunny	19.8	0.4	12.8	8	Dull yellowish brown	None	0.0	0.5	15.2	42.0	36.7	2.3	0.9	2.4	69.7	2.766	Sand	<3.6	7.0	7.0							
				2019/8/26	Sunny	27.3	0.2	18.1	5	Dull yellowish brown	None	0.0	0.0	0.1	0.3	60.4	36.3	0.1	2.8	72.2	2.878	Sand	<5.7	8.7	8.7							
				2019/11/25	Sunny	14.7	0.2	12.2	5	Dull yellowish brown	None	0.0	2.0	5.3	19.6	55.0	13.4	1.0	3.6	71.2	2.771	Sand	<7.4	6.4	6.4							
				2020/1/17	Sunny	3.8	0.3	5.6	7	Olive brown	None	0.0	0.3	1.6	9.6	58.0	25.7	1.0	3.7	73.5	2.910	Sand	<3.0	4.9	4.9							

Gunma River (Sediment) 2/5

No.	Location			Sampling Date	Weather	Air temperature (°C)	Water depth (m)	Sediment																	Remarks		
	Water area	Location	Municipality					Sediment temperature (°C)	Sample length (cm)	Color	Odor	Grain size distribution(%)					Sediment content (%)			Density (g/cm ³)	Property	Activity concentration [Bq/kg(dry)]					
												Coarse gravel	Medium gravel	Fine gravel	Coarse sand	Medium sand	Fine sand	Silt	Clay			Cs-134	Cs-137	Total			
R i v e r s	Tonegawa River Area	Agatsuma River	Downstream of Azuma Bridge	Higashi-Agatsuma Town	2019/5/14	Cloudy	20.5	0.2		15.5	5	Blackish brown	None	0.0	7.3	18.6	38.8	27.5	4.8	0.8	2.1	78.4	2.716	Sand	<3.8	6.0	6.0
					2019/6/19	Sunny	26.3	0.2	20.2	8	Blackish brown	None	0.0	11.0	17.4	36.9	30.6	2.0	0.0	2.1	77.6	2.698	Sand/gravel	<4.2	4.4	4.4	
					2019/7/3	Cloudy	27.3	0.2	20.8	5	Blackish brown	None	0.0	0.0	0.4	6.7	80.6	8.4	1.6	2.3	71.1	2.693	Sand	<1.9	4.3	4.3	
					2019/8/16	Cloudy	26.2	0.2	21.9	5	Blackish brown	None	0.0	11.6	20.1	36.9	24.7	3.3	1.3	2.0	75.1	2.696	Sand	<3.3	3.9	3.9	
					2019/9/11	Cloudy	32.4	0.2	25.6	5	Blackish brown	None	0.0	2.9	17.0	31.7	40.6	5.4	0.1	2.3	75.9	2.793	Sand	<2.3	4.0	4.0	
		2019/11/25	Sunny	18.7	0.2	12.4	5	Blackish brown	None	0.0	34.8	11.6	13.5	35.3	2.8	0.6	1.5	77.0	2.857	Gravel/sand	<2.6	4.7	4.7				
		2020/1/16	Sunny	2.1	0.2	4.2	5	Blackish brown	None	0.0	9.8	15.3	38.1	30.6	3.3	1.1	1.8	76.9	2.849	Gravel/sand	<4.3	5.5	5.5				
		2019/5/15	Sunny	23.3	0.2	18.3	5	Grayish yellowish brown	None	0.0	36.6	22.7	14.8	20.4	3.4	0.6	1.6	73.8	2.792	Gravel/sand	<5.3	13	13				
		2019/8/16	Sunny	29.4	0.3	22.9	5	Grayish yellowish brown	None	0.0	40.5	19.2	11.6	16.4	8.2	1.9	2.1	74.4	2.818	Gravel/sand	<4.8	16	16				
		2019/11/25	Sunny	18.0	0.3	13.1	5	Grayish yellowish brown	None	0.0	21.4	33.3	30.7	10.0	1.5	1.4	1.8	72.5	2.645	Gravel/sand	<7.1	14	14				
	2020/1/16	Sunny	4.8	0.3	4.2	5	Dull yellowish brown	None	0.0	8.9	7.8	21.9	48.2	9.1	1.3	2.8	71.0	2.752	Sand/gravel	<4.4	14	14					
	2019/5/14	Sunny	22.6	0.3	19.1	5	Blackish brown	None	0.0	51.6	7.3	7.8	15.5	12.1	3.1	2.7	62.9	2.707	Gravel/sand	<5.9	14	14					
	2019/6/19	Sunny	24.8	0.4	20.2	6	Dark olive	None	8.0	60.7	5.1	7.0	13.6	4.3	0.5	0.8	75.1	2.741	Gravel/sand	<5.0	9.1	9.1					
	2019/7/3	Cloudy	27.2	0.3	21.5	5	Blackish brown	None	0.0	0.1	0.5	4.2	46.9	43.4	2.0	2.9	72.0	2.800	Sand	<5.0	9.2	9.2					
	2019/8/27	Cloudy	25.4	0.5	20.2	8	Blackish brown	None	0.0	0.0	0.3	3.5	55.1	35.2	2.0	4.0	69.7	2.717	Sand	<4.9	8.8	8.8					
	2019/9/12	Sunny	30.1	0.3	24.6	5	Blackish brown	None	0.0	0.0	0.3	8.3	74.6	14.0	1.0	1.9	74.7	2.810	Sand	<4.5	4.1	4.1					
	2019/11/20	Cloudy	7.2	0.4	10.2	5	Blackish brown	None	0.0	0.0	1.1	15.2	62.6	16.1	1.1	4.0	63.7	2.644	Sand/silt	<6.8	15	15					
	2020/1/16	Sunny	9.1	0.4	8.4	5	Olive brown	None	0.0	0.0	0.2	1.6	51.0	39.3	3.0	4.9	68.9	2.719	Sand	<5.0	9.4	9.4					
	Tonegawa River System	Tonegawa River	Taisho Bridge	Shibukawa City	2019/5/14	Cloudy	21.5	0.3	12.4	5	Grayish yellowish brown	None	4.7	14.9	14.8	22.6	34.7	6.8	0.3	1.3	79.0	2.807	Sand/gravel	<5.6	8.3	8.3	
					2019/6/19	Sunny	24.2	0.5	13.8	7	Grayish yellowish brown	None	0.0	4.5	4.1	5.0	65.4	16.7	1.7	2.6	75.5	2.851	Sand	<4.6	10	10	
2019/7/3					Cloudy	27.7	0.3	17.7	5	Grayish yellowish brown	None	0.0	4.2	6.1	7.2	45.2	33.2	1.7	2.5	74.5	2.870	Sand	<3.3	13	13		
2019/8/27					Sunny	27.1	0.5	20.1	6	Olive brown	None	0.0	10.5	13.4	20.7	31.1	20.7	2.0	1.8	77.1	2.799	Sand/gravel	<4.0	14	14		
2019/9/12					Sunny	30.2	0.4	23.6	5	Grayish yellowish brown	None	2.2	9.7	6.9	11.5	29.4	31.6	6.1	2.7	78.9	2.852	Sand	<4.4	13	13		
2019/11/20		Cloudy	8.1	0.5	12.4	5	Grayish yellowish brown	None	0.0	0.2	1.2	2.5	50.3	42.1	1.0	2.8	72.2	2.914	Sand	<4.3	8.1	8.1					
2020/1/16		Sunny	9.6	0.5	9.0	5	Grayish yellowish brown	None	0.0	0.2	0.0	1.1	62.6	32.1	1.0	2.9	71.7	2.713	Sand	<5.5	12	12					
2019/5/14		Cloudy	20.2	0.1	15.1	5	Dark grayish yellow	None	0.0	35.4	21.2	12.2	21.8	6.1	1.5	1.8	79.8	3.103	Gravel/sand	<3.1	9.8	9.8					
2019/8/27		Cloudy	28.1	0.2	22.8	7	Dark grayish yellow	None	0.0	8.7	14.4	26.6	41.8	7.1	0.1	1.5	76.3	2.895	Sand/gravel	<4.2	5.2	5.2					
2019/11/20		Cloudy	11.9	0.2	12.8	5	Dark grayish yellow	None	0.0	1.1	10.7	38.1	39.7	6.2	0.9	3.3	77.8	2.943	Sand	<4.4	14	14					
2020/1/16	Sunny	9.8	0.2	8.5	5	Yellowish gray	None	0.0	5.9	14.0	15.6	45.5	16.0	0.4	2.6	77.8	3.062	Sand/gravel	<3.5	6.3	6.3						
Tonegawa River	Gunma-obashi Bridge	Machibashi City	2019/5/8	Sunny	19.1	0.5	11.4	5	Dark olive	None	0.0	0.0	0.3	48.4	44.5	3.0	3.8	73.7	2.871	Sand	<5.4	6.0	6.0				
			2019/8/7	Sunny	35.1	0.2	22.2	5	Grayish olive	None	0.0	0.0	0.0	3.3	37.4	47.4	10.1	4.9	69.1	2.758	Sand	<5.1	21	21			
			2019/11/7	Cloudy	19.6	0.6	13.8	5	Dull yellowish brown	None	0.0	0.2	0.0	0.4	27.7	55.3	13.4	2.9	70.6	2.752	Sand	<5.4	8.2	8.2			
			2020/1/16	Sunny	7.3	0.3	5.7	5	Dark olive	None	0.0	0.5	0.2	0.2	27.2	61.5	6.6	3.7	73.1	2.969	Sand	<4.0	7.8	7.8			
			2019/5/9	Sunny	17.2	0.8	12.4	3	Grayish yellowish brown	None	0.0	39.7	20.5	7.0	19.2	9.8	1.9	1.9	79.0	2.803	Gravel/sand	<5.1	6.1	6.1			
Tonegawa River	Fukushima Bridge	Tamamura Town	2019/8/7	Sunny	31.2	0.3	22.4	5	Grayish yellowish brown	None	0.0	0.9	0.2	0.9	67.5	26.5	1.2	2.8	79.9	2.949	Sand	<2.9	5.7	5.7			
			2019/11/16	Sunny	12.4	0.2	14.0	5	Dark brown	None	0.0	0.3	4.2	9.0	40.9	40.1	1.8	3.6	75.6	2.831	Sand	<4.8	4.7	4.7			
			2020/1/17	Sunny	5.5	0.2	7.2	5	Grayish yellowish brown	None	0.0	3.0	7.7	11.3	32.6	40.3	2.1	2.9	79.4	3.022	Sand	<4.2	4.6	4.6			
			2019/5/24	Sunny	23.8	0.2	19.8	6	Dark grayish yellow	None	0.0	1.1	4.0	16.0	65.1	10.2	1.0	2.7	69.3	2.871	Sand	<5.1	43	43			
			2019/8/27	Sunny	21.1	0.3	17.6	5	Blackish brown	None	0.0	0.3	4.2	17.1	61.3	13.4	1.0	2.8	72.2	2.850	Sand	<4.1	22	22			
Karasu River Area	Karasu River	Karasugawa Bridge	Takasaki City	2019/11/25	Sunny	19.1	0.3	13.4	5	Blackish brown	None	0.0	0.2	4.0	12.9	55.8	22.7	0.0	4.5	68.9	2.981	Sand	<4.7	23	23		
				2020/1/17	Sunny	7.2	0.2	8.7	6	Dark olive brown	None	0.0	17.2	10.6	12.9	44.0	12.6	0.8	2.0	75.7	2.996	Sand/gravel	<3.9	11	11		
				2019/5/24	Sunny	26.2	0.3	17.4	6	Dark grayish yellow	None	0.0	33.7	24.3	19.3	19.7	1.4	0.4	1.2	71.9	2.818	Sand/gravel	<4.4	14	14		
				2019/8/27	Sunny	23.3	0.3	18.2	5	Dull yellowish brown	None	0.0	1.3	6.5	11.5	57.1	19.8	1.1	2.7	71.6	2.762	Sand	<6.1	17	17		
				2019/11/25	Sunny	18.3	0.2	12.6	5	Dark brown	None	0.0	30.6	22.0	12.6	23.6	9.3	0.4	1.6	75.9	2.818	Sand/gravel	<5.1	4.9	4.9		
Usui River	Nakase Bridge	Atsuka City	2020/1/17	Sunny	9.1	0.3	7.9	6	Dark grayish yellow	None	0.0	17.8	14.0	21.3	37.5	6.9	0.7	1.9	79.0	2.902	Sand/gravel	<3.7	6.0	6.0			
			2019/5/21	Rain	19.4	0.4	16.7	3	Dull yellowish brown	None	0.0	27.4	42.7	26.3	1.2	0.6	0.3	1.5	72.4	2.641	Gravel/sand	<5.8	16	16			
			2019/8/19	Cloudy	28.5	0.2	22.5	5	Dark brown	None	1.8	21.6	21.9	33.2	17.0	1.9	1.1	1.6	79.9	2.792	Gravel/sand	<5.3	17	17			
			2019/11/5	Sunny	19.5	0.2	13.3	6	Brownish gray	None	0.0	0.2	0.4	2.7	45.5	38.1	6.2	6.9	67.5	2.703	Sand	<4.7	17	17			
			2020/1/15	Sunny	11.0	0.2	6.5	5	Dull yellowish brown	None	2.5	19.3	24.1	38.3	11.9	2.3	0.1	1.6	73.7	2.712	Sand/gravel	<4.8	9.0	9.0			

Gunma River (Sediment) 3/5

No.	Location			Sampling Date	Weather	Air temperature (°C)	Water depth (m)	Sediment																Activity concentration [Bq/kg(dry)]			Remarks
	Water area	Location	Municipality					Sediment temperature (°C)	Sample length (cm)	Color	Odor	Grain size distribution(%)						Sediment content (%)	Density (g/cm ³)	Property	Radioactive cesium						
												Coarse gravel	Medium gravel	Fine gravel	Coarse sand	Medium sand	Fine sand				Silt	Clay	Cs-134	Cs-137	Total		
R i v e r s	Tonegawa River System	Karasu River Area	Usui River	Hanataka Bridge	Takasaki City	2019/5/9	Cloudy	24.1	1.2	19.4	3	Brownish gray	None	0.0	32.7	10.5	6.4	12.7	10.6	18.3	8.9	60.5	2.633	Silt	<7.4	8.9	8.9
						2019/8/27	Sunny	29.2	0.3	23.8	5	Blackish brown	None	0.0	8.9	11.1	20.1	51.0	5.8	0.8	2.3	74.1	2.839	Sand	<5.3	12	12
						2019/1/5	Sunny	19.1	0.3	14.8	5	Dark brown	None	0.0	1.2	8.4	14.3	30.3	35.4	5.2	5.3	69.3	2.733	Sand	<3.9	17	17
			2020/1/15	Sunny	12.9	0.2	8.9	5	Blackish brown	None	0.0	1.2	3.2	16.8	54.7	19.2	1.3	3.7	72.5	2.762	Sand	<5.0	8.2	8.2			
			Kabura River	Tadakawa Bridge	Shimonita Town	2019/5/20	Cloudy	22.1	0.5	22.7	5	Brownish gray	None	0.0	22.5	52.4	20.6	3.4	0.2	0.1	0.7	80.0	2.663	Sand	<3.5	3.5	3.5
						2019/8/19	Cloudy	30.3	0.2	23.5	5	Grayish yellowish brown	None	0.0	24.4	35.2	33.3	5.7	0.2	0.5	0.8	87.3	2.672	Gravel/sand	<3.3	4.1	4.1
						2019/1/6	Sunny	13.3	0.2	10.6	6	Brownish gray	None	0.0	1.0	4.5	21.8	50.8	18.3	1.0	2.8	75.4	2.740	Sand	<6.1	7.9	7.9
				2020/1/15	Sunny	9.1	0.2	6.5	5	Brownish gray	None	0.0	30.7	24.7	19.6	20.8	2.8	0.3	1.0	80.6	2.732	Sand/gravel	<4.4	6.4	6.4		
				2019/5/13	Sunny	23.3	0.4	22.9	5	Gray	Faint sewage	2.7	47.4	25.4	7.8	9.3	5.2	0.9	1.3	83.6	2.716	Gravel/sand	<3.5	4.9	4.9		
				2019/8/27	Cloudy	29.6	0.3	25.9	4	Gray	None	1.5	47.1	28.1	11.6	7.9	2.1	0.5	1.2	82.8	2.684	Gravel/sand	<3.3	4.0	4.0		
			Kabungawa Bridge	Takasaki City/Fujioka City	2019/1/16	Sunny	20.3	0.2	14.3	5	Olive black	None	0.0	20.8	42.0	20.4	14.6	1.1	0.2	0.9	84.0	2.700	Gravel/sand	<0.59	2.5	2.5	
					2020/1/17	Sunny	9.1	0.2	8.0	5	Grayish olive	None	0.0	6.7	13.2	6.6	28.1	37.4	4.5	3.5	69.9	2.751	Sand	<4.9	7.2	7.2	
		2019/5/20			Sunny	23.7	0.2	19.4	3	Brownish gray	None	0.0	5.1	8.8	29.5	35.3	11.8	4.5	5.1	82.3	2.716	Sand	<3.3	13	13		
		Ogawa River	Kinzan Bridge	Kanra Town	2019/8/19	Cloudy	31.3	0.2	22.9	5	Brownish gray	None	2.2	36.9	37.8	19.9	2.1	0.2	0.2	0.7	90.9	2.694	Gravel/sand	<2.1	3.3	3.3	
					2019/1/6	Sunny	16.6	0.2	12.3	6	Brownish gray	None	0.0	6.0	3.0	10.6	40.6	29.1	7.0	3.5	75.2	2.796	Sand	<3.5	5.5	5.5	
					2020/1/15	Sunny	8.2	0.2	9.6	5	Brownish gray	None	3.0	19.2	24.2	22.0	18.7	8.8	1.9	2.3	82.0	2.773	Sand/gravel	<4.0	6.8	6.8	
		Nanmoku River	Ozawa Bridge	Nanmoku Village	2019/5/20	Cloudy	20.7	0.3	20.6	5	Grayish yellowish brown	None	0.0	7.2	10.8	18.2	54.6	6.7	0.2	2.4	74.8	2.696	Sand	<3.9	5.1	5.1	
					2019/8/19	Cloudy	26.2	0.2	23.3	5	Gray	None	0.0	18.4	25.8	20.2	28.4	5.4	0.1	1.6	78.6	2.726	Gravel/sand	<4.3	6.6	6.6	
					2019/1/15	Sunny	16.4	0.2	12.9	5	Olive black	None	0.0	39.5	42.7	14.3	0.7	0.8	1.1	0.8	90.8	2.691	Gravel/sand	<0.56	3.0	3.0	
		2020/1/15	Sunny	5.6	0.2	5.2	5	Gray	None	0.0	65.2	24.9	5.7	3.1	0.6	0.1	0.4	82.2	2.667	Gravel/sand	<4.5	5.0	5.0				
		Someya River	Yakushi Bridge	Shinto Village	2019/5/14	Cloudy	19.8	0.1	16.5	5	Blackish brown	None	4.9	42.1	16.5	10.6	20.8	3.0	0.4	1.7	78.1	3.034	Sand/gravel	<5.4	14	14	
					2019/8/27	Cloudy	26.8	0.2	23.3	5	Grayish olive	None	0.0	3.7	19.6	28.7	42.9	2.9	0.0	2.2	75.2	2.884	Sand/gravel	<4.0	14	14	
					2019/1/5	Sunny	17.4	0.2	13.7	5	Brownish gray	None	0.0	42.8	14.9	12.7	23.4	4.2	0.4	1.5	77.4	2.978	Gravel/sand	<4.7	13	13	
		2020/1/17	Sunny	11.6	0.2	7.2	5	Blackish brown	None	0.0	29.0	21.5	22.7	23.2	1.8	0.5	1.4	78.2	2.887	Sand/gravel	<4.0	16	16				
		Inogawa River	Kamakura Bridge	Takasaki City	2019/5/13	Sunny	24.2	0.2	24.5	5	Blackish brown	None	0.0	47.7	28.0	11.5	10.8	1.2	0.1	0.7	79.7	2.825	Gravel/sand	<4.8	8.4	8.4	
					2019/8/27	Sunny	28.8	0.3	24.6	5	Grayish olive	None	0.0	26.1	17.8	13.9	29.8	10.8	0.3	1.3	76.7	2.904	Sand/gravel	<4.3	22	22	
					2019/1/16	Sunny	14.3	0.3	13.3	5	Grayish yellowish brown	None	0.0	60.3	13.0	4.1	13.2	8.2	0.2	1.0	81.6	2.801	Gravel/sand	<5.1	12	12	
		2020/1/17	Sunny	6.1	0.2	8.8	5	Blackish brown	None	5.9	36.8	8.6	4.3	23.0	18.2	1.7	1.6	76.8	2.967	Sand/gravel	<3.1	4.0	4.0				
		Karasu River	Iwakura Bridge	Takasaki City/Tamamura Town	2019/5/9	Sunny	19.1	0.3	19.4	5	Grayish yellowish brown	None	0.0	37.6	25.8	15.3	17.8	1.4	0.7	1.4	76.5	2.777	Sand/gravel	<5.1	11	11	
					2019/8/27	Cloudy	28.9	0.3	23.3	5	Yellowish gray	None	10.4	39.6	19.8	16.3	8.4	1.1	2.3	2.3	83.1	2.733	Gravel/silt	<4.1	13	13	
					2019/1/16	Sunny	17.2	0.2	12.4	5	Blackish brown	None	0.0	0.0	0.0	0.0	43.8	48.2	4.1	3.9	75.2	2.813	Sand	<3.9	5.2	5.2	
		2020/1/17	Sunny	8.2	0.2	8.5	5	Blackish brown	None	0.0	0.1	0.1	1.4	72.6	18.8	3.2	3.8	74.0	2.854	Sand	<5.4	5.5	5.5				
Kama River	Shinkaname Bridge	Ueno Village	2019/5/20	Cloudy	21.0	0.3	16.6	5	Brownish gray	None	0.0	27.1	26.6	23.8	20.5	0.5	0.1	1.3	76.7	2.700	Sand/gravel	<2.2	3.1	3.1			
			2019/1/6	Sunny	14.5	0.2	11.9	6	Grayish yellowish brown	None	0.0	0.0	0.0	1.0	12.4	27.2	53.6	5.8	76.0	2.715	Sand	<6.0	14	14			
			2019/5/20	Sunny	20.2	0.4	21.1	3	Brownish gray	None	0.0	47.3	23.6	4.8	15.6	7.3	0.3	1.1	83.8	2.745	Gravel/sand	<2.9	3.7	3.7			
Morito Bridge	Kama Town	Ueno Village	2019/1/6	Sunny	16.6	0.3	11.8	5	Brownish gray	None	0.0	27.0	52.8	11.1	5.1	2.3	0.9	0.8	80.3	2.711	Gravel/sand	<0.63	0.72	0.72			
			2019/5/9	Cloudy	24.1	0.7	16.7	5	Brownish gray	None	0.0	20.3	28.8	32.2	16.3	0.4	0.0	2.0	81.7	2.704	Sand/gravel	<0.43	1.5	1.5			
			2019/1/16	Sunny	20.3	0.2	13.8	5	Olive black	None	0.0	10.0	46.5	28.5	10.9	2.9	0.0	1.3	79.8	2.696	Gravel/sand	<0.51	1.5	1.5			
Kanagawa Bridge	Kamisato Town	Kamamoto Town	2019/5/9	Sunny	22.1	0.2	17.7	3	Dull yellowish brown	None	0.0	43.8	24.0	12.3	15.7	2.0	0.3	2.1	77.3	2.675	Sand/gravel	<3.4	3.3	3.3			
			2019/1/16	Sunny	18.0	0.2	13.5	5	Olive black	None	0.0	29.1	33.5	19.5	15.4	1.3	0.1	1.1	88.3	2.685	Gravel/sand	<0.51	1.3	1.3			
			2019/5/10	Sunny	24.6	0.3	14.2	5	Olive black	None	0.0	11.1	22.8	15.6	37.0	11.0	0.4	2.1	79.0	2.843	Sand/gravel	<3.4	3.4	3.4			
Tonegawa River Area	Tonegawa River	Bando-obashi Bridge	Hojo City	2019/8/8	Sunny	33.8	0.5	26.5	5	Dark olive	None	0.0	28.4	14.7	10.7	35.9	8.7	0.1	1.6	85.0	2.876	Sand/gravel	<2.5	2.5	2.5		
				2019/1/19	Sunny	13.4	0.2	17.3	5	Grayish olive	None	0.0	29.4	12.9	13.0	29.3	13.8	0.6	1.1	75.7	2.856	Sand/gravel	<0.56	2.9	2.9		
				2020/1/7	Sunny	7.7	0.2	14.8	5	Olive black	None	4.4	27.9	18.6	17.1	20.2	8.9	0.7	2.1	82.6	2.825	Sand/gravel	<4.5	4.1	4.1		

Gunma River (Sediment) 4/5

No.	Location			Sampling Date	Weather	Air temperature (°C)	Water depth (m)	Sediment																	Remarks		
	Water area	Location	Municipality					Sediment temperature (°C)	Sample length (cm)	Color	Odor	Grain size distribution(%)						Sediment content (%)			Density (g/cm ³)	Property	Activity concentration [Bq/kg(dry)]				
												Coarse gravel	Medium gravel	Fine gravel	Coarse sand	Medium sand	Fine sand	Silt	Clay	Organic			Loss on ignition	Cs-134		Cs-137	Total
R i v e r s	Tonegawa River Area	Akagahinkawa River	In Shimodouji Town	2019/5/8	Sunny	21.2	0.2	14.6	5	Dark grayish yellow	None	3.6	27.9	16.2	10.1	34.3	6.1	0.5	1.4	80.8	3.197	Gravel/sand	<4.1	8.4	8.4		
				2019/8/7	Sunny	35.3	0.2	24.8	5	Blackish brown	None	0.0	3.3	2.6	5.0	65.1	21.6	0.1	2.5	78.9	3.284	Sand	<2.6	2.9	2.9		
				2019/1/7	Cloudy	18.7	0.3	15.8	4	Dark grayish yellow	None	0.0	0.0	0.0	0.2	33.1	63.9	1.0	1.8	76.4	3.223	Sand	<4.1	4.2	4.2		
				2020/1/6	Sunny	12.1	0.3	7.2	5	Olive brown	None	0.0	0.0	0.1	2.9	62.2	29.9	1.1	3.8	77.9	2.761	Sand	<2.9	4.7	4.7		
				2019/5/8	Sunny	22.2	0.2	14.5	7	Blackish brown	None	3.2	22.8	7.6	7.6	45.2	11.1	0.7	1.8	77.2	3.010	Sand/gravel	<2.6	4.7	4.7		
		Mononoki River	Utsubo Bridge	Maebashi City	2019/8/7	Sunny	38.0	0.2	24.9	5	Blackish brown	None	0.0	0.3	0.2	0.8	41.3	49.9	3.6	3.9	70.1	2.787	Sand	<4.6	12	12	
					2019/1/7	Sunny	17.7	0.3	14.0	6	Dull yellowish brown	None	0.0	2.3	0.5	5.2	67.4	18.9	2.9	2.9	71.2	2.740	Sand	<6.1	9.2	9.2	
					2020/1/6	Sunny	10.1	0.2	14.1	5	Blackish brown	None	0.0	2.7	3.9	20.8	54.7	14.4	1.4	2.2	75.9	2.912	Sand/gravel	<4.6	9.2	9.2	
					2019/5/8	Sunny	23.5	0.2	17.0	5	Blackish brown	None	0.0	19.1	16.0	10.5	34.6	17.5	0.3	2.1	82.9	3.316	Sand/gravel	<2.1	2.2	2.2	
					2019/8/7	Sunny	37.7	0.3	20.0	5	Blackish brown	None	0.0	21.5	6.8	4.9	49.4	13.5	1.2	2.8	74.2	2.875	Gravel/sand	<3.6	5.1	5.1	
	Arato River	Okuhara Bridge		2019/1/7	Sunny	16.2	0.3	14.8	7	Dark brown	None	0.0	0.0	0.6	1.7	34.7	52.1	6.5	4.3	66.9	2.720	Sand	<4.4	10	10		
				2020/1/6	Sunny	10.2	0.2	6.0	5	Blackish brown	None	0.0	0.2	0.9	3.8	29.2	39.7	17.1	9.1	41.4	2.715	Sand/silt	<5.7	32	32		
				2019/5/10	Sunny	27.2	0.2	18.8	5	Blackish brown	None	0.0	6.6	16.4	7.0	45.2	22.0	0.7	2.1	77.8	3.085	Sand/gravel	<3.3	4.9	4.9		
				2019/8/8	Sunny	31.1	0.5	25.8	5	Blackish brown	None	0.0	25.3	12.4	11.4	37.9	10.0	1.3	1.8	79.2	2.833	Sand/gravel	<4.2	6.0	6.0		
				2019/1/7	Sunny	14.8	0.3	14.7	5	Grayish olive	None	0.0	1.5	1.3	5.4	51.0	38.1	1.0	1.8	73.2	2.949	Sand	<3.5	5.3	5.3		
	Tonegawa River System	Kasukawa River	Hozumi Bridge		2020/1/6	Sunny	11.0	0.2	9.1	5	Blackish brown	None	0.0	2.4	2.0	4.4	51.6	37.0	0.0	2.7	75.3	2.941	Sand	<4.3	6.8	6.8	
					2019/5/10	Sunny	28.5	0.2	18.8	4	Olive black	None	0.0	17.4	35.1	23.4	19.1	3.5	0.1	1.4	79.0	2.768	Sand/gravel	<4.2	6.6	6.6	
					2019/8/8	Sunny	35.4	0.4	27.0	6	Grayish olive	None	0.0	1.0	4.8	4.8	63.6	26.7	1.0	2.8	78.2	2.820	Sand	<3.2	7.1	7.1	
					2019/1/9	Sunny	15.3	0.3	14.5	5	Olive black	None	0.0	5.4	15.4	16.1	38.8	20.5	1.6	2.3	77.1	2.824	Sand/gravel	<4.4	20	20	
					2020/1/7	Cloudy	8.2	0.2	8.5	5	Olive black	None	0.0	0.0	0.8	13.1	68.4	13.9	1.0	2.9	75.2	2.779	Sand	<5.8	7.1	7.1	
Hayakawa River		Hayakawa Bridge		2019/5/8	Sunny	25.6	0.4	15.7	5	Dull yellowish brown	None	0.0	0.5	0.4	1.3	62.1	25.7	4.8	5.3	67.9	2.735	Sand	<6.4	43	43		
				2019/8/7	Sunny	39.8	0.3	24.5	5	Blackish brown	None	0.0	0.1	1.1	4.9	60.2	27.4	2.5	3.7	78.7	2.958	Sand	<4.9	33	33		
				2019/1/7	Sunny	15.9	0.3	13.4	6	Brown	None	0.0	0.0	0.1	3.4	51.5	37.8	3.0	4.3	70.7	2.958	Sand	<5.2	41	41		
				2020/1/6	Sunny	12.0	0.3	12.6	5	Blackish brown	None	0.0	2.8	6.3	20.6	43.3	18.4	3.9	4.7	74.9	2.872	Sand	<5.5	25	25		
				2019/5/10	Sunny	28.4	0.4	17.8	7	Olive black	None	0.0	37.1	24.5	12.7	21.6	3.1	0.0	1.1	83.4	2.927	Gravel/sand	<5.0	30	30		
Masujima Bridge	Ota City		2019/8/8	Sunny	36.2	0.3	28.2	7	Olive black	None	0.0	0.0	0.0	0.1	55.9	40.2	1.1	2.9	73.2	2.881	Sand	<4.1	17	17			
			2019/1/9	Sunny	15.1	0.3	16.7	5	Olive black	None	0.0	0.6	5.2	9.3	42.9	33.5	4.5	4.1	58.5	2.793	Silt/sand	<7.7	54	54			
			2020/1/7	Cloudy	8.2	0.2	8.3	5	Olive black	None	0.0	31.9	14.3	8.2	32.9	10.2	0.3	2.4	76.6	2.747	Sand/gravel	<5.6	23	23			
			2019/5/10	Sunny	28.6	0.3	20.1	5	Olive black	None	0.0	8.0	17.9	15.3	51.0	5.7	0.5	1.7	78.7	2.724	Gravel/sand	<4.8	7.2	7.2			
			2019/6/13	Sunny	29.0	0.7	24.9	3	Grayish yellowish brown	None	0.0	14.2	12.6	13.8	41.1	14.9	2.1	1.4	77.2	2.765	Sand/gravel	<4.7	6.7	6.7			
Tonegawa River	Tone-ozaki Weir	Chiyoda Town /Gyoda City	2019/7/9	Cloudy	21.2	0.3	20.5	5	Olive black	None	0.0	30.6	15.4	12.7	25.6	14.0	0.6	1.1	81.0	2.744	Gravel/sand	<3.9	6.6	6.6			
			2019/8/8	Sunny	36.8	0.5	30.4	6	Olive black	None	0.0	43.3	23.0	10.1	17.6	5.0	0.0	1.0	81.5	2.716	Gravel/sand	<4.1	9.1	9.1			
			2019/9/3	Cloudy	27.6	0.2	22.7	5	Olive black	None	0.0	14.1	2.9	2.7	52.7	25.2	0.8	1.6	77.9	2.877	Sand	<3.8	8.9	8.9			
			2019/1/9	Sunny	17.6	0.2	16.1	6	Olive black	None	0.0	0.0	0.0	0.1	2.5	46.2	39.7	11.4	59.7	2.564	Silt/sand	<6.2	38	38			
			2020/1/7	Cloudy	9.1	0.2	7.6	6	Olive black	None	0.0	0.0	0.0	0.4	4.0	82.5	7.7	5.4	71.5	2.715	Sand/silt	<5.3	14	14			
			Koguro River	Kiyano Bridge		2019/5/7	Sunny	12.2	0.5	11.2	3	Grayish yellowish brown	None	0.0	16.7	33.3	24.3	20.9	2.9	0.4	1.5	71.2	2.805	Sand/gravel	<5.2	34	34
						2019/6/13	Sunny	17.7	0.6	12.7	3	Brownish gray	None	0.0	16.3	30.8	22.7	25.2	2.5	0.5	2.0	68.6	2.856	Sand	<5.4	33	33
						2019/7/9	Cloudy	15.8	0.3	13.3	5	Grayish olive	None	0.0	1.7	8.2	18.3	49.5	17.0	1.7	3.5	72.3	2.787	Sand/gravel	<5.1	21	21
						2019/8/1	Sunny	29.0	0.4	17.8	6	Olive black	None	4.8	35.2	26.9	21.1	10.7	0.3	0.0	1.0	80.6	2.768	Gravel/sand	3.1	43	46.1
						2019/9/4	Cloudy	20.1	0.2	17.1	5	Olive brown	None	0.0	1.6	4.5	12.4	51.5	23.5	3.7	2.7	68.7	2.787	Sand	<5.8	61	61
2019/1/22	Cloudy	7.8				0.3	7.8	5	Olive black	None	0.0	48.7	31.8	13.6	4.9	0.5	0.0	0.6	85.1	2.837	Gravel/sand	<6.4	14	14			
2020/1/6	Sunny	3.3				0.3	5.3	6	Grayish olive	None	0.0	16.7	52.6	23.1	5.1	1.2	0.1	1.2	87.6	2.680	Sand/gravel	<4.3	11	11			
2019/5/10	Sunny	26.5				0.3	16.5	4	Blackish brown	None	0.0	25.1	6.9	8.7	40.6	14.3	1.3	3.2	77.7	2.902	Sand/gravel	<4.6	30	30			
2019/8/15	Cloudy	27.4				0.3	24.5	4	Blackish brown	None	1.3	61.3	13.1	10.0	12.7	0.9	0.0	0.7	80.0	2.801	Gravel/sand	<4.5	10	10			
Watarase River Area	Takatsudo	Kiryu City				2019/1/11	Sunny	13.5	0.2	13.0	5	Brownish gray	None	0.0	26.3	13.5	15.2	35.0	8.2	0.0	1.7	77.8	2.831	Sand/gravel	<4.3	13	13
			2020/1/6	Sunny	9.1	0.2	7.4	5	Blackish brown	None	0.0	6.5	3.3	15.7	52.8	16.5	0.9	4.3	76.1	2.787	Sand	<4.5	15	15			
			2019/5/10	Sunny	28.6	0.2	21.4	5	Dark brown	None	0.0	19.8	12.2	18.5	38.3	8.0	0.1	3.3	80.2	2.744	Sand/gravel	<4.7	27	27			
			2019/6/13	Sunny	25.3	0.4	17.4	5	Brownish gray	None	0.0	2.5	5.2	29.6	55.9	4.2	0.1	2.7	75.5	2.770	Sand	<4.8	25	25			
			2019/7/9	Cloudy	21.0	0.3	17.1	5	Dark brown	None	0.0	0.6	2.4	12.8	61.2	15.3	3.9	3.8	74.5	2.731	Sand	<3.8	35	35			
	Intake for Akaiwayosui water channel			2019/8/15	Cloudy	29.2	0.2	23.8	4	Dark brown	None	0.0	0.0	1.0	13.4	69.2	12.4	0.1	3.9	73.9	2.716	Sand	<5.1	31	31		
				2019/9/4	Cloudy	26.5	0.2	20.0	5	Blackish brown	None	0.0	2.7	1.7	1.9	37.6	43.5	7.0	5.7	68.5	2.723	Sand	<5.8	46	46		
				2019/1/11	Cloudy	15.2	0.2	14.0	5	Blackish brown	None	0.0	0.0	0.6	7.9	81.6	5.9	0.8	3.3	73.5	2.741	Sand	<6.8	15	15		
				2020/1/7	Sunny	4.3	0.2	5.6	5	Blackish brown	None	0.0	15.5	8.1	13.9	47.0	12.5	0.9	2.3	73.7	2.687	Sand/gravel	<4.9	20	20		
				2019/5/9	Cloudy	19.8	1.2	17.3	4	Blackish brown	None	3.8	17.4	2.3	1.5	11.3	20.4	24.1	19.1	41.1	2.651	Silt/sand	1.6	170	186		
Tatara River	Ejiri																										

Gunma River (Sediment) 5/5

R i v e r s	Location					Sampling Date	Weather	Air temperature (°C)	Water depth (m)	Sediment																	Remarks
	No.	Water area		Location	Municipality					General items											Activity concentration [Bq/kg(dry)]						
		Sediment temperature (°C)	Sample length (cm)							Color	Odor	Coarse gravel	Medium gravel	Grain size distribution(%)			Silt	Clay	Sediment content (%)	Density (g/cm ³)	Property	Radioactive cesium					
														Fine gravel	Coarse sand	Medium sand						Fine sand	Cs-134	Cs-137	Total		
45	Kamon Bridge	Kiryu City	2019/5/10	Sunny	22.1	0.4	14.2	5	Dull yellowish brown	None	0.0	29.6	37.7	20.3	10.0	0.8	0.7	0.9	84.1	2.744	Gravel/sand	<6.2	34	34			
			2019/8/15	Cloudy	33.6	0.4	21.8	5	Olive brown	None	0.0	25.3	22.8	17.1	25.9	6.3	0.7	2.0	74.9	2.861	Sand/gravel	<5.5	32	32			
			2019/11/11	Cloudy	13.4	0.2	13.4	5	Brown	None	0.0	40.7	24.5	10.5	18.1	4.8	0.2	1.2	75.2	2.962	Gravel/sand	<5.7	27	27			
			2020/1/6	Sunny	11.0	0.2	7.9	6	Dark brown	None	0.0	11.7	18.1	24.6	38.3	4.5	0.4	2.4	75.2	2.735	Sand/gravel	<5.3	34	34			
			2019/5/10	Sunny	28.8	0.3	22.0	6	Blackish brown	None	1.0	50.9	32.4	10.5	4.0	0.5	0.3	0.5	77.8	2.713	Gravel/sand	<6.9	13	13			
			2019/8/15	Sunny	31.4	0.3	23.8	6	Blackish brown	None	1.3	40.8	17.4	12.2	17.1	6.5	2.1	2.6	82.2	2.731	Gravel/sand	<4.6	18	18			
	46	Sakai Bridge	Kiryu City/Ashikaga City	2019/11/11	Cloudy	13.4	0.3	14.6	5	Blackish brown	None	0.0	5.2	2.4	3.7	50.2	21.5	7.0	10.0	57.7	2.691	Sand	9.8	120	129.8		
				2020/1/21	Sunny	8.2	0.3	5.2	5	Blackish brown	None	2.4	38.5	14.8	21.3	18.9	2.3	0.4	1.3	78.4	2.831	Gravel/sand	<4.1	15	15		
				2019/5/9	Cloudy	19.2	0.8	19.1	10	Olive black	None	0.0	0.0	0.0	0.1	1.9	10.5	53.0	34.6	19.1	2.364	Silt	63	770	833		
				2019/8/28	Rain	26.3	0.9	25.2	10	Olive black	Faint sewage	0.0	0.2	0.1	0.3	1.6	12.8	49.9	35.1	26.0	2.328	Silt	35	610	645		
				2019/1/9	Sunny	18.8	1.0	18.1	10	Olive black	None	0.0	0.0	0.0	0.6	5.9	13.1	34.7	45.7	23.9	2.282	Silt	32	500	532		
				2020/1/21	Sunny	10.8	1.1	7.6	10	Olive black	None	0.0	0.0	0.0	0.3	3.8	9.6	40.6	45.7	21.6	2.313	Silt	36	490	526		
47	Tsunoda River	Lake Jonima	Tatebayashi City	2019/5/9	Cloudy	18.8	1.0	17.8	8	Olive black	Faint sewage	0.0	2.6	2.1	3.0	42.1	30.5	6.3	13.4	61.2	2.801	Silt	<1.0	4.2	4.2		
				2019/8/28	Cloudy	26.3	1.1	25.2	10	Olive black	Faint sewage	0.0	0.0	0.0	0.1	14.5	37.7	33.0	14.8	37.0	2.570	Silt	<9.8	90	90		
				2019/1/9	Sunny	18.7	1.2	19.1	10	Olive black	None	0.0	0.0	0.1	0.3	49.9	35.6	7.8	6.3	73.6	2.709	Sand/silt	<6.1	36	36		
				2020/1/21	Sunny	11.1	1.2	10.8	5	Olive black	None	0.0	0.0	0.0	0.1	34.2	44.8	11.1	9.9	59.6	2.710	Sand/silt	<6.5	47	47		
				2019/5/9	Cloudy	18.8	1.0	17.8	8	Olive black	Faint sewage	0.0	2.6	2.1	3.0	42.1	30.5	6.3	13.4	61.2	2.801	Silt	<1.0	4.2	4.2		
				2019/8/28	Cloudy	26.3	1.1	25.2	10	Olive black	Faint sewage	0.0	0.0	0.0	0.1	14.5	37.7	33.0	14.8	37.0	2.570	Silt	<9.8	90	90		
48	Yatagawa River	Togoda Bridge	Meiwa Town Itakura Town	2019/1/9	Sunny	18.7	1.2	19.1	10	Olive black	None	0.0	0.0	0.1	0.3	49.9	35.6	7.8	6.3	73.6	2.709	Sand/silt	<6.1	36	36		
				2020/1/21	Sunny	11.1	1.2	10.8	5	Olive black	None	0.0	0.0	0.0	0.1	34.2	44.8	11.1	9.9	59.6	2.710	Sand/silt	<6.5	47	47		

Gunma River (Surrounding Environment) 1/5

No.	Location			Sampling Date	Weather	Air temperature (°C)	Surrounding Environment (Soil, Air dose)													Remarks			
	Water area	Location	Municipality				Left bank						Right bank										
							Color	Odor	Property	Activity concentration [Bq/kg(dry)]			Air Dose (μSv/h)	Color	Odor	Property	Activity concentration [Bq/kg(dry)]				Air Dose (μSv/h)		
										Radioactive cesium							Radioactive cesium						
Cs-134	Cs-137	Total	Cs-134	Cs-137	Total																		
R i v e r s	Tonegawa River System	Tonegawa River Area	Hirose Bridge	Minakami Town	2019/5/27	Sunny	29.2	Dull yellow orange	None	Loamy	10	110	120	0.08	Dull yellow orange	None	Loamy	13	200	213	0.06		
					2019/8/2	Sunny	31.5	Dull yellow orange	None	Loamy	4.3	55	59.3	0.09	Brown	Faint earth	Loamy	8.7	130	138.7	0.07		
					2019/11/22	Sunny	8.5	Dull yellow orange	Faint earth	Loamy	8.8	110	118.8	0.07	Dull yellowish brown	Faint earth	Loamy	<7.6	100	100	0.07		
					2020/1/6	Sunny	2.0	Dull yellowish brown	None	Loamy	<8.4	44	44	0.07	Dull yellowish brown	None	Loamy	8.4	150	158.4	0.07		
					2019/5/14	Cloudy	22.0	Blackish brown	Faint earth	Loamy	20	250	270	0.06	Dark brown	Faint earth	Loamy	23	340	363	0.06		
					2019/6/19	Cloudy	27.8	Blackish brown	Faint earth	Loamy	15	220	235	0.07	Blackish brown	Faint earth	Loamy	42	490	532	0.06		
			2	Tsukiyono Bridge	Minakami Town	2019/7/3	Sunny	25.5	Blackish brown	Faint earth	Loamy	17	230	247	0.06	Blackish brown	Faint earth	Loamy	28	330	358	0.05	
						2019/8/16	Sunny	29.6	Grayish yellowish brown	Faint earth	Loamy	5.3	92	97.3	0.06	Dark brown	Faint earth	Loamy	44	520	564	0.06	
						2019/9/11	Sunny	28.7	Blackish brown	Faint earth	Loamy	8.8	170	178.8	0.06	Blackish brown	Faint earth	Loamy	46	620	666	0.05	
						2019/11/22	Sunny	10.0	Blackish brown	Faint earth	Loamy	13	210	223	0.06	Grayish yellowish brown	Faint earth	Loamy	29	430	459	0.06	
						2020/1/6	Sunny	6.1	Blackish brown	Faint earth	Loamy	13	210	223	0.04	Dark brown	Faint earth	Loamy	28	420	448	0.06	
						2019/5/14	Cloudy	23.3	Brown	Faint earth	Loamy	<8.8	82	82	0.05	Grayish yellowish brown	Faint earth	Loamy	11	140	151	0.05	
			3	Akaya River	Kosode Bridge	Minakami Town	2019/8/16	Sunny	29.0	Blackish brown	Faint earth	Loamy	<9.6	110	110	0.05	Dark brown	Faint earth	Loamy	21	270	291	0.05
							2019/11/22	Cloudy	10.1	Blackish brown	Faint earth	Loamy	<8.0	100	100	0.05	Blackish brown	Faint earth	Loamy	14	180	194	0.05
							2020/1/6	Sunny	7.2	Brown	None	Sandy	<7.2	48	48	0.04	Blackish brown	Faint earth	Loamy	11	120	131	0.04
		4	Sakura River	In Oozaya Yachi	Kawaba Village	2019/5/7	Sunny	11.4	Blackish brown	None	Loamy	120	1,400	1,520	0.10	Dark brown	Faint earth	Loamy	500	6,500	7,000	0.09	
						2019/6/19	Sunny	25.8	Blackish brown	Faint earth	Loamy	94	1,300	1,394	0.10	Blackish brown	Faint earth	Loamy	130	1,700	1,830	0.08	
						2019/7/3	Cloudy	23.8	Blackish brown	Faint earth	Loamy	83	1,200	1,283	0.09	Blackish brown	Faint earth	Loamy	120	1,700	1,820	0.09	
						2019/8/2	Sunny	32.8	Blackish brown	Faint earth	Loamy	100	1,600	1,700	0.09	Blackish brown	Faint earth	Loamy	81	1,100	1,181	0.08	
						2019/9/11	Sunny	28.7	Dark brown	Faint earth	Loamy	73	1,300	1,373	0.09	Blackish brown	Faint earth	Loamy	110	1,500	1,610	0.08	
						2019/11/22	Cloudy	10.0	Blackish brown	Faint earth	Loamy	94	1,500	1,594	0.08	Blackish brown	Faint earth	Loamy	72	1,100	1,172	0.07	
						2020/1/7	Cloudy	4.5	Blackish brown	Faint earth	Loamy	99	1,400	1,499	0.05	Blackish brown	Faint earth	Loamy	120	1,700	1,820	0.06	
						2019/5/30	Sunny	20.0	Grayish yellowish brown	Faint earth	Loamy	23	320	343	0.06	Dark brown	Faint earth	Loamy	47	680	727	0.07	
		5	Katashina River	Kirinoki Bridge	Katashina Village	2019/8/16	Cloudy	23.6	Blackish brown	Faint earth	Loamy	28	420	448	0.07	Blackish brown	Faint earth	Loamy	66	960	1,026	0.06	
						2019/11/19	Sunny	10.0	Blackish brown	Faint earth	Loamy	12	170	182	0.05	Dark brown	Faint earth	Loamy	31	400	431	0.06	
						2020/1/7	Sunny	1.2	Dull yellowish brown	Faint earth	Loamy	<6.2	110	110	0.04	Blackish brown	Faint earth	Loamy	71	1,100	1,171	0.04	
						2019/5/30	Sunny	25.5	Brownish gray	None	Sandy	<5.3	11	11	0.05	Blackish brown	Faint earth	Loamy	58	660	718	0.06	
						2019/6/14	Sunny	24.4	Grayish yellowish brown	None	Sandy	<7.1	19	19	0.05	Blackish brown	Faint earth	Loamy	110	1,500	1,610	0.06	
						2019/7/5	Cloudy	22.8	Brownish gray	None	Sandy	<5.2	10	10	0.05	Blackish brown	Faint earth	Loamy	98	1,200	1,298	0.06	
				6	Tonemachitakatoya	Numata City	2019/8/16	Sunny	27.4	Grayish yellowish brown	None	Sandy	<6.0	12	12	0.06	Blackish brown	Faint earth	Loamy	98	1,600	1,698	0.06
2019/9/13	Cloudy						19.1	Dull yellow orange	None	Sandy	<6.4	35	35	0.05	Blackish brown	Faint earth	Loamy	79	1,200	1,279	0.06		
2019/11/19	Sunny						14.8	Grayish yellowish brown	None	Sandy	<6.8	9.0	9.0	0.05	Blackish brown	Faint earth	Loamy	79	1,200	1,279	0.05		
2020/1/7	Sunny						4.3	Grayish yellowish brown	None	Sandy	<5.9	9.5	9.5	0.05	Blackish brown	Faint earth	Loamy	36	600	636	0.05		
2019/5/14	Cloudy						21.0	Brown	Faint earth	Loamy	51	630	681	0.04	Dark brown	None	Loamy	48	530	578	0.05		
2019/6/19	Sunny						25.3	Blackish brown	Faint earth	Loamy	41	610	651	0.04	Dark brown	Faint earth	Loamy	10	160	170	0.05		
7	Futae Bridge	Numata City	2019/7/3	Cloudy	26.4	Dull yellowish brown	Faint earth	Loamy	34	510	544	0.05	Dark brown	Faint earth	Loamy	31	370	401	0.05				
			2019/8/16	Sunny	31.4	Dull yellowish brown	Faint earth	Loamy	41	620	661	0.05	Grayish yellowish brown	Faint earth	Loamy	35	440	475	0.06				
			2019/9/11	Sunny	30.2	Grayish yellowish brown	Faint earth	Loamy	44	570	614	0.05	Dark brown	Faint earth	Loamy	20	310	330	0.05				
			2019/11/20	Cloudy	6.5	Blackish brown	Faint earth	Loamy	47	810	857	0.05	Blackish brown	Faint earth	Loamy	32	460	492	0.05				
			2020/1/7	Cloudy	6.2	Blackish brown	Faint earth	Loamy	38	640	678	0.04	Dark brown	Faint earth	Loamy	34	560	594	0.04				
			2019/5/23	Sunny	25.2	Blackish brown	Faint earth	Loamy	37	500	537	0.04	Blackish brown	Faint earth	Loamy	19	200	219	0.04				
			2019/8/26	Sunny	27.7	Blackish brown	Faint earth	Loamy	33	400	433	0.04	Blackish brown	Faint earth	Loamy	20	270	290	0.04				
8	Agatsuma River	Shinto Bridge	Naganohara Town	2019/11/25	Sunny	15.9	Blackish brown	Faint earth	Loamy	17	280	297	0.04	Blackish brown	Faint earth	Loamy	65	980	1,045	0.04			
				2020/1/17	Sunny	4.0	Blackish brown	Faint earth	Loamy	25	390	415	0.04	Blackish brown	Faint earth	Loamy	28	460	488	0.04			
				2019/5/23	Sunny	19.8	Blackish brown	Faint earth	Loamy	310	4,200	4,510	0.04	Blackish brown	Faint earth	Loamy	130	1,700	1,830	0.04			
				2019/8/26	Sunny	27.3	Blackish brown	Faint earth	Loamy	81	1,100	1,181	0.04	Blackish brown	Faint earth	Loamy	96	1,200	1,296	0.04			
9	Shirasuna River	Shuttatsu Bridge	Nakanajo Town	2019/11/25	Sunny	14.7	Blackish brown	Faint earth	Loamy	13	190	203	0.04	Blackish brown	Faint earth	Loamy	23	360	383	0.04			
				2020/1/17	Sunny	3.8	Dark brown	Faint earth	Loamy	31	490	521	0.04	Blackish brown	Faint earth	Loamy	42	590	632	0.04			

Gunma River (Surrounding Environment) 2/5

No.	Location			Sampling Date	Weather	Air temperature (°C)	Surrounding Environment(Soil,Air,dose)													Remarks		
	Water area	Location	Municipality				Left bank						Right bank									
							Color	Odor	Property	Activity concentration [Bq/kg(dry)]			Air Dose (μSv/h)	Color	Odor	Property	Activity concentration [Bq/kg(dry)]				Air Dose (μSv/h)	
										Radioactive cesium							Radioactive cesium					
			Cs-134	Cs-137	Total	Cs-134	Cs-137	Total				Cs-134	Cs-137	Total								
R i v e r s	Tonegawa River System	Agatsuma River	Downstream of Azuma Bridge	Higashi-Agatsuma Town	2019/5/14	Cloudy	20.5	Dull yellowish brown	None	Sandy	<4.5	5.1	5.1	0.04	Dark brown	Faint earth	Loamy	27	430	457	0.04	
					2019/6/19	Sunny	26.3	Grayish yellowish brown	None	Sandy	<6.2	4.8	4.8	0.04	Dark brown	Faint earth	Loamy	13	150	163	0.04	
					2019/7/3	Cloudy	27.3	Dull yellowish brown	None	Sandy	<2.6	4.6	4.6	0.04	Blackish brown	Faint earth	Loamy	11	130	141	0.04	
					2019/8/16	Cloudy	26.2	Grayish yellowish brown	None	Sandy	<6.5	8.6	8.6	0.04	Blackish brown	Faint earth	Loamy	18	300	318	0.04	
					2019/9/11	Cloudy	32.4	Brown	None	Sandy	<7.4	6.7	6.7	0.04	Dark brown	Faint earth	Loamy	12	150	162	0.04	
					2019/11/25	Sunny	18.7	Grayish yellowish brown	None	Sandy	<5.7	13	13	0.04	Blackish brown	Faint earth	Loamy	<7.6	99	99	0.04	
		2020/1/16	Sunny	2.1	Dull yellowish brown	None	Sandy	<6.4	22	22	0.04	Blackish brown	Faint earth	Loamy	35	540	575	0.04				
		11	Nakuta River	Tonoda Bridge	Takayama Village	2019/5/15	Sunny	23.3	Dark brown	Faint earth	Loamy	13	210	223	0.04	Brown	Faint earth	Loamy	<8.8	110	110	0.04
						2019/8/16	Sunny	29.4	Dull yellowish brown	Faint earth	Loamy	8.2	91	99.2	0.04	Dull yellowish brown	Faint earth	Loamy	<6.4	42	42	0.04
						2019/11/25	Sunny	18.0	Dull yellowish brown	Faint earth	Loamy	13	130	143	0.05	Brown	Faint earth	Loamy	7.8	110	117.8	0.04
	2020/1/16					Sunny	4.8	Brown	Faint earth	Loamy	6.6	81	87.6	0.04	Brown	Faint earth	Loamy	10	100	110	0.04	
	12	Agatsuma River	Agatsuma Bridge	Shibukawa City	2019/5/14	Sunny	22.6	Dark brown	None	Loamy	25	320	345	0.04	Grayish yellowish brown	Faint earth	Loamy	57	790	847	0.04	
					2019/6/19	Sunny	24.8	Blackish brown	Faint earth	Loamy	22	300	322	0.04	Blackish brown	Faint earth	Loamy	74	790	864	0.04	
					2019/7/3	Cloudy	27.2	Dark brown	Faint earth	Loamy	23	380	403	0.04	Blackish brown	Faint earth	Loamy	45	610	655	0.04	
					2019/8/27	Cloudy	25.4	Blackish brown	Faint earth	Loamy	15	220	235	0.04	Blackish brown	Faint earth	Loamy	81	1,300	1,381	0.06	
					2019/9/12	Sunny	30.1	Dark brown	Faint earth	Loamy	32	430	462	0.04	Blackish brown	Faint earth	Loamy	110	1,500	1,610	0.05	
					2019/11/20	Cloudy	7.2	Blackish brown	Faint earth	Loamy	56	910	966	0.04	Blackish brown	Faint earth	Loamy	110	1,500	1,610	0.04	
					2020/1/16	Sunny	9.1	Dull yellowish brown	Faint earth	Loamy	20	300	320	0.05	Blackish brown	Faint earth	Loamy	31	430	461	0.04	
					2019/5/14	Cloudy	21.5	Dull yellowish brown	None	Loamy	21	240	261	0.04	Dull yellowish brown	None	Loamy	100	1,300	1,400	0.04	
					2019/6/19	Sunny	24.2	Dark brown	Faint earth	Loamy	38	470	508	0.04	Dark brown	Faint earth	Loamy	150	2,200	2,350	0.04	
2019/7/3					Cloudy	27.7	Blackish brown	Faint earth	Loamy	24	330	354	0.04	Blackish brown	Faint earth	Loamy	34	540	574	0.04		
13	Tonegawa River	Taisho Bridge	Shibukawa City	2019/8/27	Sunny	27.1	Dark brown	Faint earth	Loamy	32	440	472	0.04	Blackish brown	Faint earth	Loamy	66	860	926	0.04		
				2019/9/12	Sunny	30.2	Dark brown	Faint earth	Loamy	55	980	1,035	0.05	Dark brown	Faint earth	Loamy	240	3,500	3,740	0.05		
				2019/11/20	Cloudy	8.1	Blackish brown	Faint earth	Loamy	64	1,060	1,064	0.04	Blackish brown	Faint earth	Loamy	210	2,900	3,110	0.04		
				2020/1/16	Sunny	9.6	Dull yellowish brown	Faint earth	Loamy	40	630	670	0.05	Dull yellowish brown	Faint earth	Loamy	8.8	150	158.8	0.04		
				2019/5/14	Cloudy	20.2	Brown	None	Loamy	10	150	160	0.04	Dull yellow orange	None	Loamy	8.6	93	101.6	0.04		
				2019/8/27	Cloudy	28.1	Dull yellowish brown	Faint earth	Loamy	<5.1	84	84	0.04	Brown	Faint earth	Loamy	8.5	100	108.5	0.04		
				2019/11/20	Cloudy	11.9	Brown	Faint earth	Loamy	6.9	98	104.9	0.04	Brown	Faint earth	Loamy	<6.1	89	89	0.04		
				2020/1/16	Sunny	9.8	Dull yellowish brown	Faint earth	Loamy	<5.7	100	100	0.04	Dull yellowish brown	Faint earth	Loamy	<6.4	120	120	0.04		
				2019/5/8	Sunny	19.1	Brown	Faint earth	Loamy	<4.8	4.5	4.5	0.04	Brown	Faint earth	Loamy	<8.2	68	68	0.04		
				2019/8/7	Sunny	35.1	Brown	Faint earth	Loamy	<7.4	110	110	0.04	Brown	Faint earth	Loamy	9.5	130	139.5	0.04		
14	Tonegawa River	Gunma-ohashi Bridge	Maebashi City	2019/11/7	Cloudy	19.6	Light yellowish brown	Faint earth	Loamy	<10	59	59	0.04	Dull yellowish brown	Faint earth	Loamy	<8.0	61	61	0.04		
				2020/1/16	Sunny	7.3	Yellowish brown	Faint earth	Loamy	<5.9	8.6	8.6	0.04	Dull yellowish brown	Faint earth	Loamy	<8.8	88	88	0.04		
				2019/5/9	Sunny	17.2	Dull yellowish brown	None	Loamy	<7.9	46	46	0.04	Blackish brown	None	Loamy	9.4	110	119.4	0.04		
				2019/8/7	Sunny	31.2	Dull yellowish brown	Faint earth	Loamy	<4.8	56	56	0.04	Grayish yellowish brown	Faint earth	Loamy	6.1	84	90.1	0.04		
				2019/11/16	Sunny	12.4	Dull yellowish brown	Faint earth	Loamy	<7.3	30	30	0.04	Grayish yellowish brown	Faint earth	Loamy	<7.2	63	63	0.04		
				2020/1/17	Sunny	5.5	Dull yellowish brown	Faint earth	Loamy	<8.3	42	42	0.04	Dark brown	Faint earth	Loamy	<7.6	57	57	0.04		
15	Tonegawa River	Fukushima Bridge	Tamamura Town	2019/5/24	Sunny	23.8	Blackish brown	Faint earth	Loamy	52	670	722	0.05	Black	Faint earth	Loamy	28	380	408	0.04		
				2019/8/27	Sunny	21.1	Blackish brown	Faint earth	Loamy	27	440	467	0.04	Dark brown	Faint earth	Loamy	34	460	494	0.05		
				2019/11/25	Sunny	19.1	Blackish brown	Faint earth	Loamy	36	560	596	0.05	Black	Faint earth	Loamy	110	1,800	1,910	0.05		
				2020/1/17	Sunny	7.2	Blackish brown	Faint earth	Loamy	31	400	431	0.04	Black	Faint earth	Loamy	30	470	500	0.05		
				2019/5/24	Sunny	26.2	Blackish brown	Faint earth	Loamy	52	740	792	0.04	Dull yellowish brown	Faint earth	Loamy	38	530	568	0.05		
				2019/8/27	Sunny	23.3	Blackish brown	Faint earth	Loamy	<4.7	7.0	7.0	0.04	Dull yellowish brown	Faint earth	Loamy	11	160	171	0.04		
16	Karasu River Area	Nagai River	Kamigonda Bridge	Takasaki City	2019/11/25	Sunny	18.3	Blackish brown	Faint earth	Loamy	20	310	330	0.04	Dull yellowish brown	Faint earth	Loamy	9.3	160	169.3	0.04	
					2020/1/17	Sunny	9.1	Blackish brown	Faint earth	Loamy	9.9	160	169.9	0.04	Blackish brown	Faint earth	Loamy	8.9	140	148.9	0.04	
					2019/5/21	Rain	19.4	Dark brown	None	Loamy	15	180	195	0.05	Blackish brown	None	Loamy	12	180	192	0.06	
					2019/8/19	Cloudy	28.5	Brown	Faint earth	Loamy	9.1	93	102.1	0.04	Dark brown	Faint earth	Loamy	<5.2	32	32	0.05	
					2019/11/5	Sunny	19.5	Dark brown	None	Loamy	<9.3	28	28	0.05	Dull yellowish brown	Faint earth	Loamy	<5.1	9.3	9.3	0.04	
					2020/1/15	Sunny	11.0	Dull yellowish brown	Faint earth	Loamy	15	230	245	0.04	Grayish yellowish brown	Faint earth	Loamy	<4.2	9.1	9.1	0.04	
17	Karasu River Area	Karasu River	Karasugawa Bridge	Takasaki City	2019/5/21	Rain	19.4	Dark brown	None	Loamy	15	180	195	0.05	Blackish brown	None	Loamy	12	180	192	0.06	
					2019/8/19	Cloudy	28.5	Brown	Faint earth	Loamy	9.1	93	102.1	0.04	Dark brown	Faint earth	Loamy	<5.2	32	32	0.05	
					2019/11/5	Sunny	19.5	Dark brown	None	Loamy	<9.3	28	28	0.05	Dull yellowish brown	Faint earth	Loamy	<5.1	9.3	9.3	0.04	
					2020/1/15	Sunny	11.0	Dull yellowish brown	Faint earth	Loamy	15	230	245	0.04	Grayish yellowish brown	Faint earth	Loamy	<4.2	9.1	9.1	0.04	
					2019/5/21	Rain	19.4	Dark brown	None	Loamy	15	180	195	0.05	Blackish brown	None	Loamy	12	180	192	0.06	
					2019/8/19	Cloudy	28.5	Brown	Faint earth	Loamy	9.1	93	102.1	0.04	Dark brown	Faint earth	Loamy	<5.2	32	32	0.05	
18	Karasu River Area	Usui River	Nakase Bridge	Annaka City	2019/5/21	Rain	19.4	Dark brown	None	Loamy	15	180	195	0.05	Blackish brown	None	Loamy	12	180	192	0.06	
					2019/8/19	Cloudy	28.5	Brown	Faint earth	Loamy	9.1	93	102.1	0.04	Dark brown	Faint earth	Loamy	<5.2	32	32	0.05	
					2019/11/5	Sunny	19.5	Dark brown	None	Loamy	<9.3	28	28	0.05	Dull yellowish brown	Faint earth	Loamy	<5.1	9.3	9.3	0.04	
					2020/1/15	Sunny	11.0	Dull yellowish brown	Faint earth	Loamy	15	230	245	0.04	Grayish yellowish brown	Faint earth	Loamy	<4.2	9.1	9.1	0.04	
					2019/5/21	Rain	19.4	Dark brown	None	Loamy	15	180	195	0.05	Blackish brown	None	Loamy	12	180	192	0.06	
					2019/8/19	Cloudy	28.5	Brown	Faint earth	Loamy	9.1	93	102.1	0.04	Dark brown	Faint earth	Loamy	<5.2	32	32	0.05	
19	Karasu River Area	Usui River	Nakase Bridge	Annaka City	2019/5/21	Rain	19.4	Dark brown	None	Loamy	15	180	195	0.05	Blackish brown	None	Loamy	12	180	192	0.06	
					2019/8/19	Cloudy	28.5	Brown	Faint earth	Loamy	9.1	93	102.1	0.04	Dark brown	Faint earth	Loamy	<5.2	32	32	0.05	
					2019/11/5	Sunny	19.5	Dark brown	None	Loamy	<9.3	28	28	0.05	Dull yellowish brown	Faint earth	Loamy	<5.1	9.3	9.3	0.04	
					2020/1/15	Sunny	11.0	Dull yellowish brown	Faint earth	Loamy	15	230	245	0.04	Grayish yellowish brown	Faint earth	Loamy	<4.2	9.1	9.1	0.04	
					2019/5/21	Rain	19.4	Dark brown	None	Loamy	15	180	195	0.05	Blackish brown	None	Loamy	12	180	192	0.06	
					2019/8/19	Cloudy	28.5	Brown	Faint earth	Loamy	9.1	93	102.1	0.04	Dark brown	Faint earth	Loamy	<5.2	32	32	0.05	

Gunma River (Surrounding Environment) 3/5

No.	Location			Sampling Date	Weather	Air temperature (°C)	Surrounding Environment(Soil,Air,dose)													Remarks	
	Water area	Location	Municipality				Left bank						Right bank								
							Color	Odor	Property	Activity concentration [Bq/kg(dry)]			Air Dose (μSv/h)	Color	Odor	Property	Activity concentration [Bq/kg(dry)]				Air Dose (μSv/h)
										Radioactive cesium							Radioactive cesium				
			Cs-134	Cs-137	Total	Cs-134	Cs-137	Total				Cs-134	Cs-137	Total							
20	Usui River	Hanataka Bridge	Takasaki City	2019/5/9	Cloudy	24.1	Dull yellowish brown	None	Loamy	20	210	230	0.04	Dull yellowish brown	None	Loamy	24	290	314	0.04	
				2019/8/27	Sunny	29.2	Dull yellowish brown	Faint earth	Loamy	17	220	237	0.05	Brown	Faint earth	Loamy	9.7	120	129.7	0.04	
				2019/11/5	Sunny	19.1	Dull yellowish brown	Faint earth	Loamy	<8.5	73	73	0.04	Dark brown	Faint earth	Loamy	14	270	284	0.04	
				2020/1/15	Sunny	12.9	Dark brown	Faint earth	Loamy	12	180	192	0.04	Dark brown	Faint earth	Loamy	21	340	361	0.04	
	21	Kabura River	Tadakawa Bridge	Shimonita Town	2019/5/20	Cloudy	22.1	Dull yellowish brown	None	Loamy	8.5	110	118.5	0.05	Grayish yellowish brown	None	Loamy	30	390	420	0.06
					2019/8/19	Cloudy	30.3	Dull yellowish brown	None	Loamy	13	210	223	0.05	Dull yellow orange	None	Loamy	22	360	382	0.06
					2019/11/6	Sunny	13.3	Dull yellowish brown	Faint earth	Loamy	12	120	132	0.05	Blackish brown	None	Loamy	<7.7	86	86	0.04
					2020/1/15	Sunny	9.1	Grayish yellowish brown	Faint earth	Loamy	<7.8	110	110	0.05	Dull yellowish brown	Faint earth	Loamy	9.3	140	149.3	0.04
	22	Kaburagawa Bridge	Takasaki City/Fujioka City	Takasaki City/Fujioka City	2019/5/13	Sunny	23.5	Dull yellowish brown	Faint earth	Loamy	<7.4	44	44	0.05	Brown	Faint earth	Loamy	<6.8	66	66	0.04
					2019/8/27	Cloudy	29.6	Dull yellowish brown	Faint earth	Loamy	<5.5	16	16	0.04	Brown	Faint earth	Loamy	<5.1	53	53	0.04
					2019/11/16	Sunny	20.5	Dull yellowish brown	Faint earth	Loamy	<6.8	23	23	0.04	Dull yellowish brown	Faint earth	Loamy	<8.5	38	38	0.04
					2020/1/17	Sunny	9.1	Dull yellowish brown	Faint earth	Loamy	<6.8	54	54	0.04	Brown	Faint earth	Loamy	<6.9	45	45	0.04
	23	Ogawa River	Kinzan Bridge	Kanra Town	2019/5/20	Sunny	23.7	Grayish yellowish brown	None	Loamy	8.2	86	94.2	0.04	Dull yellowish brown	None	Loamy	10	120	130	0.04
					2019/8/19	Cloudy	31.3	Grayish yellowish brown	Faint earth	Loamy	7.3	94	101.3	0.05	Brownish gray	Faint earth	Loamy	19	310	329	0.04
					2019/11/6	Sunny	16.6	Dark brown	Faint earth	Loamy	6.5	61	67.5	0.05	Dark brown	Faint earth	Loamy	13	170	183	0.04
					2020/1/15	Sunny	8.2	Dark brown	Faint earth	Loamy	<7.1	49	49	0.04	Dark brown	Faint earth	Loamy	10	150	160	0.04
24	Nanmoku River	Ozawa Bridge	Nanmoku Village	2019/5/20	Cloudy	20.7	Dull yellowish brown	None	Loamy	28	280	308	0.04	Dull yellowish brown	None	Loamy	28	390	418	0.05	
				2019/8/19	Cloudy	26.2	Dark brown	Faint earth	Loamy	55	840	895	0.04	Blackish brown	Faint earth	Loamy	15	160	175	0.04	
				2019/11/5	Sunny	16.4	Brown	Faint earth	Loamy	21	340	361	0.04	Dark brown	Faint earth	Loamy	27	460	487	0.05	
				2020/1/15	Sunny	5.6	Brown	Faint earth	Loamy	13	140	153	0.05	Blackish brown	Faint earth	Loamy	38	600	638	0.05	
25	Someya River	Yakushi Bridge	Shinto Village	2019/5/14	Cloudy	19.8	Dull yellowish brown	None	Loamy	7.4	93	100.4	0.04	Dull yellowish brown	None	Loamy	<6.7	67	67	0.04	
				2019/8/27	Cloudy	26.8	Dark brown	Faint earth	Loamy	16	260	276	0.04	Dull yellowish brown	Faint earth	Loamy	<4.4	60	60	0.04	
				2019/11/5	Sunny	17.4	Dull yellowish brown	Faint earth	Loamy	14	150	164	0.04	Brown	Faint earth	Loamy	<6.3	40	40	0.04	
				2020/1/17	Sunny	11.6	Dark brown	Faint earth	Loamy	9.8	170	179.8	0.04	Dark brown	Faint earth	Loamy	<6.2	50	50	0.04	
26	Inogawa River	Kamakura Bridge	Takasaki City	2019/5/13	Sunny	24.2	Grayish yellowish brown	Faint earth	Loamy	<7.4	89	89	0.05	Grayish yellowish brown	Faint earth	Loamy	10	120	130	0.05	
				2019/8/27	Sunny	28.8	Dark brown	Faint earth	Loamy	5.9	81	86.9	0.04	Blackish brown	Faint earth	Loamy	4.6	54	58.6	0.04	
				2019/11/16	Sunny	14.3	Dark brown	Faint earth	Loamy	<8.2	95	95	0.04	Blackish brown	Faint earth	Loamy	<7.7	81	81	0.04	
				2020/1/17	Sunny	6.1	Dull yellowish brown	Faint earth	Loamy	<8.9	71	71	0.04	Blackish brown	Faint earth	Loamy	<8.4	72	72	0.04	
27	Karasu River	Iwakura Bridge	Takasaki City/Tamamura Town	2019/5/9	Sunny	19.1	Dull yellowish brown	None	Loamy	17	210	227	0.04	Brown	Faint earth	Loamy	8.9	88	96.9	0.04	
				2019/8/27	Cloudy	28.9	Dark brown	Faint earth	Loamy	11	180	191	0.04	Dull yellowish brown	Faint earth	Loamy	4.8	67	71.8	0.04	
				2019/11/16	Sunny	17.2	Dark brown	Faint earth	Loamy	<7.2	59	59	0.04	Dull yellowish brown	Faint earth	Loamy	<7.1	73	73	0.04	
				2020/1/17	Sunny	8.2	Dark brown	Faint earth	Loamy	17	190	207	0.04	Dark brown	Faint earth	Loamy	<8.9	54	54	0.04	
28	Shinkaname Bridge	Ueno Village	Ueno Village	2019/5/20	Cloudy	21.0	Brown	None	Loamy	36	410	446	0.06	Brown	None	Loamy	13	180	193	0.06	
				2019/11/6	Sunny	14.5	Dark brown	Faint earth	Loamy	17	300	317	0.05	Blackish brown	Faint earth	Loamy	17	260	277	0.05	
29	Morito Bridge	Kanm Town	Kanm Town	2019/5/20	Sunny	20.2	Grayish yellowish brown	None	Loamy	17	210	227	0.05	Brownish gray	None	Sandy	<5.8	8.5	8.5	0.05	
				2019/11/6	Sunny	16.6	Dark brown	Faint earth	Loamy	6.4	110	116.4	0.05	Blackish brown	None	Sandy	<4.5	12	12	0.05	
30	Tobukyo Bridge	Fujioka City/Kamisato Town	Fujioka City/Kamisato Town	2019/5/9	Cloudy	24.1	Brown	None	Loamy	9.8	110	119.8	0.04	Grayish yellowish brown	None	Loamy	<6.7	90	90	0.04	
				2019/11/16	Sunny	20.5	Blackish brown	Faint earth	Loamy	14	190	204	0.05	Grayish olive	Faint earth	Loamy	<5.8	63	63	0.04	
31	Kannagawa Bridge	Kamisato Town	Kamisato Town	2019/5/9	Sunny	22.1	Brownish gray	None	Sandy	<5.1	8.7	8.7	0.04	Grayish yellowish brown	None	Loamy	<8.1	59	59	0.04	
				2019/11/16	Sunny	18.0	Blackish brown	Faint earth	Loamy	<7.2	83	83	0.04	Grayish yellowish brown	Faint earth	Loamy	<6.9	69	69	0.04	
32	Tonegawa River	Bando-obashi Bridge	Honjo City	2019/5/10	Sunny	24.6	Brown	Faint earth	Loamy	<6.9	72	72	0.04	Dull yellowish brown	Faint earth	Loamy	9.3	95	104.3	0.05	
				2019/8/8	Sunny	33.8	Brown	Faint earth	Loamy	9.5	130	139.5	0.04	Brown	Faint earth	Loamy	<4.2	60	60	0.04	
				2019/11/9	Sunny	13.4	Grayish yellowish brown	Faint earth	Loamy	<10	76	76	0.05	Dull yellowish brown	Faint earth	Loamy	<5.6	10	10	0.04	
				2020/1/7	Sunny	7.7	Brown	Faint earth	Loamy	9.1	110	119.1	0.04	Dull yellowish brown	Faint earth	Loamy	<8.8	62	62	0.04	

Gunma River (Surrounding Environment) 4/5

No.	Location			Sampling Date	Weather	Air temperature (°C)	Surrounding Environment(Soil,Air,dose)													Remarks	
	Water area	Location	Municipality				Left bank			Radioactive cesium						Right bank			Air Dose (μSv/h)		
							Color	Odor	Property	Activity concentration [Bq/kg(dry)]			Air Dose (μSv/h)	Color	Odor	Property	Activity concentration [Bq/kg(dry)]				
										Cs-134	Cs-137	Total					Cs-134	Cs-137			Total
33	Akagishirakawa River	In Shimohosoi Town		2019/5/8	Sunny	21.2	Dark brown	None	Loamy	<8.4	74	74	0.05	Brown	None	Loamy	<8.6	13	13	0.04	
				2019/8/7	Sunny	35.3	Dull yellowish brown	None	Loamy	8.1	92	100.1	0.04	Dull yellow orange	None	Loamy	<5.3	63	63	0.04	
				2019/11/7	Cloudy	18.7	Brown	Faint earth	Loamy	9.6	140	149.6	0.05	Dull yellowish brown	Faint earth	Loamy	<5.8	50	50	0.04	
				2020/1/6	Sunny	12.1	Blackish brown	None	Loamy	<8.7	92	92	0.04	Blackish brown	None	Loamy	<7.2	46	46	0.04	
34	Momonoki River	Utsubo Bridge	Maebashi City	2019/5/8	Sunny	22.2	Dark brown	None	Loamy	<8.7	53	53	0.04	Dark brown	None	Loamy	<9.3	76	76	0.04	
				2019/8/7	Sunny	38.0	Grayish yellowish brown	None	Loamy	5.9	96	101.9	0.04	Dull yellowish brown	None	Loamy	12	180	192	0.04	
				2019/11/7	Sunny	17.7	Dull yellowish brown	Faint earth	Loamy	<5.6	51	51	0.04	Brown	Faint earth	Loamy	<11	120	120	0.05	
				2020/1/16	Sunny	10.1	Dark brown	Faint earth	Loamy	<5.1	24	24	0.04	Dark brown	Faint earth	Loamy	9.2	140	149.2	0.04	
35	Arato River	Okuhara Bridge		2019/5/8	Sunny	23.5	Dull yellowish brown	None	Loamy	<7.5	20	20	0.04	Dull yellowish brown	None	Loamy	<6.6	14	14	0.04	
				2019/8/7	Sunny	37.7	Brown	None	Loamy	4.4	45	49.4	0.04	Dull yellowish brown	None	Loamy	<4.5	18	18	0.04	
				2019/11/7	Sunny	16.2	Dull yellowish brown	Faint earth	Loamy	<6.6	17	17	0.04	Dull yellowish brown	Faint earth	Loamy	<5.0	17	17	0.04	
				2020/1/16	Sunny	10.2	Dull yellowish brown	Faint earth	Loamy	<4.9	18	18	0.04	Dull yellowish brown	Faint earth	Loamy	<6.0	25	25	0.04	
36	Kasukawa River	Hozumi Bridge		2019/5/10	Sunny	27.2	Dull yellowish brown	Faint earth	Loamy	<8.8	60	60	0.04	Dull yellowish brown	Faint earth	Loamy	<7.5	26	26	0.04	
				2019/8/8	Sunny	31.1	Dark brown	Faint earth	Loamy	<8.6	62	62	0.04	Dull yellowish brown	Faint earth	Loamy	<6.7	35	35	0.04	
				2019/11/7	Sunny	14.8	Dark brown	Faint earth	Loamy	<7.6	95	95	0.04	Brown	Faint earth	Loamy	<6.4	39	39	0.04	
				2020/1/16	Sunny	11.0	Dull yellowish brown	Faint earth	Loamy	<6.5	49	49	0.04	Dull yellowish brown	Faint earth	Loamy	<8.0	74	74	0.04	
37	Hirose River	Nakajima Bridge	Iesaki City	2019/5/10	Sunny	28.5	Brown	Faint earth	Loamy	<7.8	67	67	0.04	Dull yellowish brown	Faint earth	Loamy	<9.7	22	22	0.05	
				2019/8/8	Sunny	35.4	Dull yellowish brown	Faint earth	Loamy	<7.9	110	110	0.04	Dull yellowish brown	Faint earth	Loamy	19	210	229	0.04	
				2019/11/9	Sunny	15.5	Brown	Faint earth	Loamy	11	150	161	0.04	Dull yellowish brown	Faint earth	Loamy	7.5	140	147.5	0.04	
				2020/1/7	Cloudy	8.2	Dull yellowish brown	Faint earth	Loamy	9.5	160	169.5	0.04	Dull yellowish brown	Faint earth	Loamy	<8.8	67	67	0.04	
38	Hayakawa River	Hayakawa Bridge		2019/5/8	Sunny	25.6	Dark brown	None	Loamy	9.0	130	139.0	0.04	Dark brown	None	Loamy	<7.7	100	100	0.04	
				2019/8/7	Sunny	39.8	Dull yellow orange	None	Loamy	13	190	203	0.04	Dull yellowish brown	None	Loamy	14	160	174	0.04	
				2019/11/7	Sunny	15.9	Dull yellowish brown	Faint earth	Loamy	8.1	150	158.1	0.04	Dull yellowish brown	Faint earth	Loamy	<7.6	150	150	0.04	
				2020/1/16	Sunny	12.0	Brown	Faint earth	Loamy	<7.7	51	51	0.05	Dull yellowish brown	Faint earth	Loamy	8.6	130	138.6	0.05	
39	Hayakawa River	Maejima Bridge	Ota City	2019/5/10	Sunny	28.4	Dull yellowish brown	Faint earth	Loamy	<7.5	45	45	0.04	Brown	Faint earth	Loamy	<7.0	35	35	0.05	
				2019/8/8	Sunny	36.2	Dull yellowish brown	Faint earth	Loamy	<5.8	46	46	0.04	Dull yellowish brown	Faint earth	Loamy	<4.4	50	50	0.05	
				2019/11/9	Sunny	15.1	Grayish yellowish brown	Faint earth	Loamy	<7.1	100	100	0.05	Blackish brown	Faint earth	Loamy	10	120	130	0.06	
				2020/1/7	Cloudy	8.2	Brown	Faint earth	Loamy	12	180	192	0.04	Grayish yellowish brown	Faint earth	Loamy	<9.0	46	46	0.06	
40	Tonegawa River	Tone-ozeki Weir	Chiyoda Town /Gyoda City	2019/5/10	Sunny	28.6	Brown	None	Loamy	13	170	183	0.04	Brown	None	Loamy	9.5	96	105.5	0.04	
				2019/6/13	Sunny	29.0	Blackish brown	None	Loamy	9.0	150	159.0	0.04	Dull yellowish brown	None	Loamy	<6.0	86	86	0.04	
				2019/7/9	Cloudy	21.2	Dark brown	Faint earth	Loamy	13	150	163	0.04	Dull yellowish brown	Faint earth	Loamy	18	200	218	0.04	
				2019/8/8	Sunny	36.8	Dull yellow orange	Faint earth	Loamy	16	170	186	0.04	Dull yellow orange	Faint earth	Loamy	7.2	100	107.2	0.04	
41	Koguro River	Kayano Bridge		2019/9/3	Cloudy	27.6	Grayish yellowish brown	Faint earth	Loamy	11	160	171	0.04	Dull yellowish brown	Faint earth	Loamy	12	180	192	0.04	
				2019/11/9	Sunny	17.6	Dull yellowish brown	Faint earth	Loamy	13	130	143	0.04	Dark brown	Faint earth	Loamy	<7.7	160	160	0.04	
				2020/1/7	Cloudy	9.1	Blackish brown	Faint earth	Loamy	<8.8	100	100	0.04	Dull yellowish brown	Faint earth	Loamy	12	160	172	0.04	
				2019/5/7	Sunny	12.2	Grayish yellowish brown	None	Loamy	40	520	560	0.07	Dark brown	None	Loamy	25	290	315	0.07	
42	Watarase River	Takatsudo	Kiryu City	2019/6/13	Sunny	17.7	Brownish gray	None	Sandy	10	160	170	0.07	Blackish brown	None	Loamy	26	420	446	0.07	
				2019/7/9	Cloudy	15.8	Brown	Faint earth	Loamy	<5.8	22	22	0.07	Blackish brown	Faint earth	Loamy	<7.3	85	85	0.06	
				2019/8/1	Sunny	29.0	Olive brown	Faint earth	Loamy	8.7	130	138.7	0.07	Blackish brown	Faint earth	Loamy	36	530	566	0.07	
				2019/9/4	Cloudy	20.1	Dull yellowish brown	Faint earth	Loamy	<5.4	120	120	0.04	Blackish brown	Faint earth	Loamy	21	360	381	0.05	
43	Watarase River	Intake for Akaiwayosui water channel		2019/11/22	Cloudy	7.8	Dull yellowish brown	Faint earth	Loamy	<6.5	36	36	0.06	Dark brown	Faint earth	Loamy	19	330	349	0.06	
				2020/1/6	Sunny	3.3	Dark brown	None	Loamy	<7.8	29	29	0.06	Blackish brown	None	Loamy	<8.9	60	60	0.06	
				2019/5/10	Sunny	26.5	Blackish brown	Faint earth	Loamy	<9.2	89	89	0.05	Brown	Faint earth	Loamy	<8.4	31	31	0.05	
				2019/8/15	Cloudy	27.4	Blackish brown	Faint earth	Loamy	9.5	160	169.5	0.05	Dull yellowish brown	Faint earth	Loamy	<8.1	38	38	0.04	
44	Tatara River	Ejiri Bridge	Oura Town	2019/11/11	Sunny	13.5	Blackish brown	Faint earth	Loamy	8.4	110	118.4	0.04	Dull yellowish brown	Faint earth	Loamy	<6.8	60	60	0.05	
				2020/1/6	Sunny	9.1	Dark brown	Faint earth	Loamy	<8.8	15	15	0.05	Dull yellowish brown	Faint earth	Loamy	<8.1	71	71	0.05	
				2019/5/10	Sunny	28.6	Dull yellowish brown	Faint earth	Loamy	<6.1	38	38	0.04	Blackish brown	Faint earth	Loamy	15	240	255	0.05	
				2019/6/13	Sunny	25.3	Grayish yellowish brown	None	Loamy	<5.7	11	11	0.05	Blackish brown	Faint earth	Loamy	17	260	277	0.05	
44	Tatara River	Ejiri Bridge	Oura Town	2019/7/9	Cloudy	21.0	Dull yellowish brown	Faint earth	Loamy	<6.1	27	27	0.04	Dark brown	Faint earth	Loamy	9.1	140	149.1	0.05	
				2019/8/15	Cloudy	29.2	Brown	Faint earth	Loamy	<6.2	7.7	7.7	0.04	Blackish brown	Faint earth	Loamy	<6.4	100	100	0.05	
				2019/9/4	Cloudy	26.5	Dull yellowish brown	Faint earth	Loamy	<4.7	27	27	0.04	Dark brown	Faint earth	Loamy	8.4	140	148.4	0.05	
				2019/11/11	Cloudy	15.2	Dull yellowish brown	Faint earth	Loamy	<8.6	43	43	0.05	Blackish brown	Faint earth	Loamy	9.3	170	179.3	0.04	
44	Tatara River	Ejiri Bridge	Oura Town	2020/1/7	Sunny	4.3	Dull yellowish brown	Faint earth	Loamy	<7.6	23	23	0.05	Blackish brown	Faint earth	Loamy	10	130	140	0.05	
				2019/5/9	Cloudy	19.8	Blackish brown	None	Loamy	17	210	227	0.04	Dark brown	None	Loamy	16	180	196	0.04	
				2019/8/28	Cloudy	24.3	Black	Faint earth	Loamy	23	390	413	0.04	Dull yellowish brown	Faint earth	Loamy	7.3	77	84.3	0.04	
				2019/11/11	Sunny	16.6	Blackish brown	Faint earth	Loamy	10	130	140	0.05	Dark brown	Faint earth	Loamy	17	210	227	0.04	
2020/1/21	Sunny	11.0	Blackish brown	Faint earth	Loamy	<8.6	63	63	0.04	Brown	Faint earth	Loamy	<8.5	54	54	0.04					

Gunma River (Surrounding Environment) 5/5

R i v e r s	Location				Sampling Date	Weather	Air temperature (°C)	Surrounding Environment(Soil,Air dose)														Remarks	
	No.	Water area		Location				Municipality	Left bank				Right bank										
									Color	Odor	Property	Activity concentration [Bq/kg(dry)]			Air Dose (μSv/h)	Color	Odor	Property	Activity concentration [Bq/kg(dry)]				Air Dose (μSv/h)
												Radioactive cesium							Radioactive cesium				
			Cs-134	Cs-137	Total				Cs-134	Cs-137	Total												
45	Tonegawa River System	Watarase River Area	Kiryu River	Kannon Bridge	Kiryu City	2019/5/10	Sunny	22.1	Blackish brown	Faint earth	Loamy	<9.2	76	76	0.05	Dull yellowish brown	Faint earth	Loamy	<5.7	15	15	0.05	
						2019/8/15	Cloudy	33.6	Dark brown	Faint earth	Loamy	<6.9	81	81	0.05	Blackish brown	Faint earth	Loamy	<8.3	26	26	0.05	
						2019/11/11	Cloudy	13.4	Dark brown	Faint earth	Loamy	<7.4	76	76	0.04	Blackish brown	Faint earth	Loamy	<8.7	48	48	0.04	
				2020/1/6	Sunny	11.0	Dark brown	Faint earth	Loamy	12	120	132	0.05	Dark brown	Faint earth	Loamy	<7.7	32	32	0.04			
				2019/5/10	Sunny	28.8	Dull yellowish brown	Faint earth	Loamy	<7.5	26	26	0.04	Dull yellow orange	Faint earth	Loamy	<9.3	61	61	0.04			
				2019/8/15	Sunny	31.4	Dull yellowish brown	Faint earth	Loamy	<8.6	31	31	0.05	Brown	Faint earth	Loamy	<9.0	44	44	0.04			
	46	Tonegawa River System	Watarase River Area	Kiryu River	Sakai Bridge	Kiryu City/Ashikaga City	2019/11/11	Cloudy	13.4	Brown	Faint earth	Loamy	<6.5	24	24	0.05	Dull yellowish brown	Faint earth	Loamy	8.4	93	101.4	0.05
							2020/1/21	Sunny	8.2	Brown	Faint earth	Loamy	<7.4	41	41	0.04	Dull yellowish brown	Faint earth	Loamy	<6.1	57	57	0.04
							2019/5/9	Cloudy	19.2	Brown	Faint earth	Loamy	12	140	152	0.04	Dark grayish yellow	Faint earth	Loamy	18	230	248	0.04
					2019/8/28	Rain	26.5	Brown	Faint earth	Loamy	7.9	120	127.9	0.04	Grayish yellowish brown	Faint earth	Loamy	8.2	130	138.2	0.04		
					2019/1/9	Sunny	18.8	Dark brown	Faint earth	Loamy	22	230	252	0.04	Blackish brown	Faint earth	Loamy	24	380	404	0.04		
					2020/1/21	Sunny	10.8	Brown	Faint earth	Loamy	16	190	206	0.04	Dark brown	Faint earth	Loamy	7.4	120	127.4	0.04		
	47	Tonegawa River System	Watarase River Area	Tsuruuda River	Lake Jonuma	Tatebayashi City	2019/5/9	Cloudy	18.8	Yellowish brown	Faint earth	Loamy	<6.7	46	46	0.05	Dark brown	Faint earth	Loamy	<6.7	78	78	0.04
							2019/8/28	Cloudy	26.5	Dull yellowish brown	Faint earth	Loamy	<6.6	26	26	0.04	Dark brown	Faint earth	Loamy	<6.4	71	71	0.04
							2019/11/9	Sunny	18.7	Brown	Faint earth	Loamy	<7.4	50	50	0.04	Dark brown	Faint earth	Loamy	<7.8	56	56	0.04
2020/1/21							Sunny	11.1	Brown	Faint earth	Loamy	<7.7	110	110	0.05	Dark brown	Faint earth	Loamy	<8.5	120	120	0.05	
2019/5/9							Cloudy	18.8	Yellowish brown	Faint earth	Loamy	<6.7	46	46	0.05	Dark brown	Faint earth	Loamy	<6.7	78	78	0.04	
48	Tonegawa River System	Watarase River Area	Yatagawa River	Togoda Bridge	Meiwa Town /Itakura Town	2019/8/28	Cloudy	26.5	Dull yellowish brown	Faint earth	Loamy	<6.6	26	26	0.04	Dark brown	Faint earth	Loamy	<6.4	71	71	0.04	
						2019/11/9	Sunny	18.7	Brown	Faint earth	Loamy	<7.4	50	50	0.04	Dark brown	Faint earth	Loamy	<7.8	56	56	0.04	
						2020/1/21	Sunny	11.1	Brown	Faint earth	Loamy	<7.7	110	110	0.05	Dark brown	Faint earth	Loamy	<8.5	120	120	0.05	

Gunma Lakes and Reservoirs (Water) 2/4

No.	Water area	Location			Sampling Date	Weather	Air temperature (°C)	Water depth (m)	Water								Remarks			
		Location	Municipality	General items						Activity concentration(Bq/L)										
				Water temperature (°C)					Sampling depth (m)	Color	Odor	Secchi disk depth (m)	Electrical conductivity (mS/m)	SS (mg/L)	Turbidity (FNU)	Cs-134		Cs-137		
55	Lake Akaya (Aimata Dam)	Center	Minakami Town	Surface layer	2019/5/27	Sunny	23.1	47.2	17.7	0.5	Light grayish yellow green	None	6.4	7.0	<1	0.5	<0.74	<0.55		
				Deep layer					7.4	46.2	-	None		6.2	9	4.3	<0.68	<0.66		
				Surface layer	2019/8/1	Sunny	30.0	35.5	24.3	0.5	Grayish yellow green	None	0.9	5.9	4	3.4	<0.65	<0.80		
				Deep layer					8.8	34.5	-	None		5.4	4	2.7	<0.68	<0.80		
				Surface layer	2019/10/17	Sunny	13.1	42.3	15.7	0.5	Grayish yellow green	None	0.3	5.3	62	84	<0.66	<0.61		
				Deep layer					13.5	41.3	-	None		4.2	110	90	<0.78	<0.55		
	56	Tonegawa River Area	Center	Numata City	Surface layer	2019/12/3	Sunny	8.8	49.0	10.0	0.5	Light grayish yellow green	None	2.2	6.4	3	2.5	<0.82	<0.66	
					Deep layer					9.4	48.0	-	None		6.6	21	12	<0.70	<0.70	
					Surface layer	2019/5/8	Sunny	15.3	40.0	13.4	0.5	Grayish yellow green	None	2.7	6.4	1	1.5	<0.62	<0.85	
					Deep layer					9.2	39.0	-	None		6.0	2	1.8	<0.65	<0.74	
					Surface layer	2019/8/2	Sunny	31.8	27.1	23.0	0.5	Grayish yellow green	None	1.7	8.0	2	1.5	<0.82	<0.80	
					Deep layer					20.2	26.1	-	None		7.9	18	7.0	<0.75	<0.74	
57	Lake Akagionuma	Center	Maebashi City	Surface layer	2019/10/8	Sunny	22.1	29.9	19.3	0.5	Dark grayish yellowish green	None	2.1	9.1	<1	0.6	<0.70	<0.79		
				Deep layer					17.9	28.9	-	None		9.3	5	2.7	<0.73	<0.54		
				Surface layer	2019/12/4	Sunny	2.4	39.2	8.4	0.5	Grayish yellow green	None	2.3	8.3	6	5.7	<0.82	<0.74		
				Deep layer					7.6	38.2	-	None		9.2	14	8.4	<0.87	<0.61		
				Surface layer	2019/5/8	Sunny	13.9	18.5	10.0	0.5	Grayish yellow green	None	4.7	4.7	1	1.1	<0.87	<0.89		
				Deep layer					8.3	17.5	-	None		4.7	2	1.3	<0.77	<0.85		
58	Lake Okushima (Shimagawa Dam)	Center	Nakanajo Town	Surface layer	2019/8/1	Sunny	28.6	18.0	24.7	0.5	Light grayish yellow green	None	4.5	4.2	1	0.5	<0.65	<0.89		
				Deep layer					10.6	17.0	-	None		6.0	5	4.0	<0.88	<0.89		
				Surface layer	2019/10/1	Sunny	19.5	17.0	18.8	0.5	Dark grayish yellowish green	None	5.0	4.6	<1	0.5	<0.65	<0.48		
				Deep layer					10.6	16.0	-	Faint sewage		8.1	9	5.6	<0.89	<0.61		
				Surface layer	2019/11/11	Sunny	8.8	17.4	10.7	0.5	Light grayish yellow green	None	2.5	4.6	5	1.9	<0.69	<0.71		
				Deep layer					10.6	16.4	-	None		4.6	7	3.0	<0.72	<0.83		
	59	Agatsuma River Area	Center	Nakanajo Town	Surface layer	2019/5/15	Sunny	14.7	45.0	13.2	0.5	Light grayish blue green	None	10.0	8.3	<1	0.6	<0.65	<0.85	
					Deep layer					5.5	44.0	-	None		13.1	3	1.9	<0.86	<0.80	
					Surface layer	2019/8/16	Rain	22.5	18.0	18.9	0.5	Grayish bluish green	None	3.5	8.2	3	1.5	<0.78	<0.80	
					Deep layer					15.1	17.0	-	None		7.3	1	0.4	<0.71	<0.80	
					Surface layer	2019/10/3	Cloudy	18.7	31.0	17.2	0.5	Dark grayish green	None	3.0	11.4	2	2.1	<0.89	<0.59	
					Deep layer					6.9	30.0	-	None		15.6	<1	0.3	<0.73	<0.74	
60	Lake Tashiro (Kazawa Dam)	Center	Tsumagoi Village	Surface layer	2019/12/9	Sunny	5.8	43.2	7.9	0.5	Light grayish blue green	None	11.5	9.7	3	0.9	<0.78	<0.87		
				Deep layer					7.3	42.2	-	None		10.0	<1	0.6	<0.78	<0.55		
				Surface layer	2019/5/15	Sunny	20.5	6.9	15.9	0.5	Light grayish blue	None	5.0	16.4	1	0.7	<0.85	<0.85		
				Deep layer					13.4	5.9	-	None		16.8	2	1.1	<0.89	<0.80		
				Surface layer	2019/8/16	Cloudy	24.1	7.3	19.2	0.5	Greenish dark gray	None	1.5	9.9	11	3.6	<0.76	<0.74		
				Deep layer					19.0	6.3	-	None		9.7	10	3.4	<0.87	<0.87		
60	Lake Tashiro (Kazawa Dam)	Center	Tsumagoi Village	Surface layer	2019/10/3	Cloudy	21.2	6.9	18.6	0.5	Dark grayish bluish green	None	3.0	24.4	2	0.6	<0.73	<0.67		
				Deep layer					17.7	5.9	-	None		19.7	7	2.0	<0.91	<0.74		
				Surface layer	2019/12/9	Cloudy	5.4	2.8	7.6	0.5	Dark grayish bluish green	None	>2.8	26.6	<1	0.6	<0.73	<0.61		
				Deep layer					7.3	1.8	-	None		27.1	2	0.5	<0.82	<0.75		
				Surface layer	2019/5/23	Sunny	23.0	2.3	18.6	0.5	Grayish greenish yellow	None	1.6	8.2	3	2.9	<0.83	<0.59		
				Deep layer					17.5	1.3	-	None		8.3	5	2.9	<0.65	<0.80		
60	Lake Tashiro (Kazawa Dam)	Center	Tsumagoi Village	Surface layer	2019/8/26	Sunny	24.2	1.5	19.2	0.5	Grayish greenish yellow	None	1.0	8.4	8	5.3	<0.75	<0.59		
				Deep layer					-	-	-	-	-	-	-	-	-	-	Unable to collect samples from the deep layer due to shallow water	
				Surface layer	2019/10/4	Sunny	20.6	1.8	17.4	0.5	Dark grayish greenish yellow	None	0.8	8.6	10	6.8	<0.72	<0.67		
				Deep layer					-	-	-	-	-	-	-	-	-	-	Unable to collect samples from the deep layer due to shallow water	
				Surface layer	2019/11/26	Cloudy	7.4	2.7	8.1	0.5	Dark grayish greenish yellow	None	0.8	9.8	13	11	<0.81	<0.70		
				Deep layer					8.0	1.7	-	None		9.8	21	14	<0.79	<0.66		

Gunma Lakes and Reservoirs (Water) 3/4

No.	Water area	Location			Sampling Date	Weather	Air temperature (°C)	Water depth (m)	Water								Remarks					
		Location	Municipality	General items					Activity concentration(Bq/L)													
				Water temperature (°C)					Sampling depth (m)	Color	Odor	Secchi disk depth (m)	Electrical conductivity (mS/m)	SS (mg/L)	Turbidity (FNU)	Cs-134		Cs-137				
61	Lake Haruna	Center	Takasaki City	Surface layer	2019/5/13	Sunny	15.4	14.9	15.7	0.5	Grayish yellow green	None	2.2	9.4	<1	0.9	<0.73	<0.80				
				Deep layer				7.6	13.9	-	None		10.6	4	5.1	<0.89	<0.85					
				Surface layer	2019/8/27	Sunny	18.4	14.2	23.3	0.5	Dark grayish yellowish green	None	5.5	8.9	<1	0.3	<0.59	<0.85				
				Deep layer				9.7	13.2	-	None		10.7	3	3.6	<0.84	<0.91					
				Surface layer	2019/10/3	Cloudy	17.8	14.0	20.4	0.5	Grayish bluish green	None	5.0	9.2	<1	0.3	<0.62	<0.74				
				Deep layer				9.8	13.0	-	None		11.0	5	7.9	<0.73	<0.88					
				Surface layer	2019/11/5	Sunny	7.3	14.5	13.0	0.5	Grayish yellow green	None	4.0	9.1	1	0.5	<0.60	<0.66				
				Deep layer				8.8	13.5	-	None		12.7	6	6.1	<0.55	<0.47					
				Surface layer	2019/5/21	Rain	19.2	21.0	16.7	0.5	Grayish yellow green	None	4.2	11.7	<1	0.6	<0.77	<0.61				
				Deep layer				9.1	20.0	-	None		14.6	11	3.4	<0.57	<0.70					
				Surface layer	2019/8/19	Cloudy	24.4	12.2	20.9	0.5	Grayish yellow green	None	2.7	8.8	<1	0.9	<0.87	<0.88				
				Deep layer				10.7	11.2	-	None		14.2	3	2.0	<0.66	<0.74					
				Surface layer	2019/10/10	Sunny	16.9	12.9	16.3	0.5	Grayish yellow green	None	2.8	10.1	2	1.6	<0.83	<0.47				
				Deep layer				9.6	11.9	-	None		16.5	3	1.9	<0.65	<0.61					
62	Lake Kirizumi (Kirizumi Dam)	Center	Annaka City	Surface layer	2019/12/12	Sunny	12.1	6.2	5.9	0.5	Light grayish yellow green	None	3.2	10.8	<1	0.6	<0.68	<0.87				
				Deep layer				5.7	5.2	-	None		10.9	8	1.5	<0.79	<0.88					
				Surface layer	2019/5/21	Rain	19.0	12.5	16.7	0.5	Grayish yellow green	None	5.2	11.4	1	0.9	<0.85	<0.74				
				Deep layer				7.6	11.5	-	None		14.0	6	4.6	<0.81	<0.86					
				Surface layer	2019/8/19	Cloudy	25.5	12.5	20.0	0.5	Grayish yellow green	None	2.6	10.0	<1	0.5	<0.88	<0.85				
				Deep layer				8.8	11.5	-	None		15.7	5	3.8	<0.87	<0.85					
				Surface layer	2019/10/10	Sunny	17.7	12.9	16.8	0.5	Dark grayish yellow green	None	3.7	10.6	1	1.4	<0.76	<0.61				
				Deep layer				9.6	11.9	-	None		17.1	9	3.3	<0.64	<0.66					
				Surface layer	2019/12/12	Sunny	11.8	13.8	6.6	0.5	Grayish yellow green	None	2.6	10.4	1	1.4	<0.79	<0.81				
				Deep layer				6.7	12.8	-	None		10.4	3	1.2	<0.79	<0.91					
				Surface layer	2019/5/21	Sunny	22.7	32.0	18.5	0.5	Grayish yellow green	None	2.7	29.6	1	1.1	<0.73	<0.90				
				Deep layer				7.1	31.0	-	None		40.0	4	2.7	<0.83	<0.90					
				Surface layer	2019/8/19	Cloudy	27.6	23.4	25.5	0.5	Grayish yellow green	None	2.6	23.4	1	0.7	<0.68	<0.74				
				Deep layer				16.4	22.4	-	None		16.1	3	2.1	<0.70	<0.74					
63	Lake Usuiiko (Sakamoto Dam)	Center	Annaka City	Surface layer	2019/10/10	Sunny	20.2	23.0	19.8	0.5	Grayish yellow green	None	3.8	23.0	1	0.9	<0.85	<0.54				
				Deep layer				15.5	22.0	-	None		16.1	4	3.4	<0.73	<0.66					
				Surface layer	2019/12/12	Sunny	14.2	27.2	9.7	0.5	Light grayish yellow green	None	1.9	26.4	2	1.7	<0.71	<0.81				
				Deep layer				9.6	26.2	-	None		27.5	32	14	<0.70	<0.92					
				Surface layer	2019/5/20	Sunny	24.1	15.0	19.5	0.5	Grayish yellow green	None	4.2	24.1	<1	0.5	<0.69	<0.74				
				Deep layer				15.6	14.0	-	None		24.3	24	12	<0.81	<0.85					
				Surface layer	2019/8/20	Cloudy	25.5	13.2	25.4	0.5	Grayish yellowish green	None	2.7	16.0	2	0.9	<0.88	<0.88				
				Deep layer				24.5	12.2	-	None		16.1	8	2.7	<0.88	<0.67					
				Surface layer	2019/10/10	Sunny	22.4	16.1	21.8	0.5	Grayish yellowish green	None	3.6	17.1	1	0.5	<0.67	<0.54				
				Deep layer				20.8	15.1	-	None		17.8	12	5.5	<0.48	<0.71					
				Surface layer	2019/12/12	Sunny	13.2	18.4	9.1	0.5	Light grayish yellow green	None	2.5	19.0	3	1.9	<0.53	<0.92				
				Deep layer				8.7	17.4	-	None		19.3	13	7.0	<0.71	<0.66					
				64	Lake Arafune (Dodairagawa Dam)	Center	Shimonita Town	Surface layer	2019/5/20	Sunny	18.2	71.0	19.2	0.5	Grayish green	None	4.2	16.6	1	0.7	<0.55	<0.88
								Deep layer				8.4	70.0	-	None		16.2	12	13	<0.70	<0.85	
Surface layer	2019/8/20	Rain	23.4					68.5	26.7	0.5	Grayish yellow green	None	2.9	14.2	1	1.1	<0.81	<0.88				
Deep layer								8.5	67.5	-	None		17.2	11	7.6	<0.81	<0.74					
Surface layer	2019/10/11	Sunny	19.8					76.8	20.8	0.5	Grayish yellowish green	None	2.2	14.4	1	1.2	<0.78	<0.75				
Deep layer								8.4	75.8	-	None		16.5	2	2.3	<0.78	<0.61					
Surface layer	2019/12/13	Sunny	7.1					82.0	12.0	0.5	Light grayish yellow	None	0.4	13.4	20	23	<0.83	<0.92				
Deep layer								11.4	81.0	-	None		13.7	130	84	<0.75	<0.74					
Surface layer	2019/5/20	Sunny	22.9					10.2	19.7	0.5	Grayish green	None	3.7	17.7	<1	0.6	<0.70	<0.80				
Deep layer								9.6	9.2	-	None		20.0	5	4.8	<0.79	<0.85					
Surface layer	2019/8/20	Sunny	26.6					6.7	20.7	0.5	Grayish yellow green	None	1.5	14.5	2	1.1	<0.69	<0.90				
Deep layer								16.2	5.7	-	None		15.9	8	3.5	<0.78	<0.67					
Surface layer	2019/10/11	Sunny	21.1					7.0	17.0	0.5	Light grayish yellow green	None	2.3	16.7	1	0.8	<0.80	<0.55				
Deep layer								16.4	6.0	-	None		16.9	4	2.3	<0.78	<0.74					
Surface layer	2019/12/13	Sunny	8.2	6.8	6.2	0.5	Light grayish yellow green	None	2.5	17.1	3	0.8	<0.77	<0.74								
Deep layer				6.0	5.8	-	None		17.3	17	3.8	<0.81	<0.81									
65	Lake Oshio (Oshio Dam)	Center	Tomioka City	Surface layer	2019/5/20	Sunny	24.1	15.0	19.5	0.5	Grayish yellow green	None	4.2	24.1	<1	0.5	<0.69	<0.74				
				Deep layer				15.6	14.0	-	None		24.3	24	12	<0.81	<0.85					
				Surface layer	2019/8/20	Cloudy	25.5	13.2	25.4	0.5	Grayish yellowish green	None	2.7	16.0	2	0.9	<0.88	<0.88				
				Deep layer				24.5	12.2	-	None		16.1	8	2.7	<0.88	<0.67					
				Surface layer	2019/10/10	Sunny	22.4	16.1	21.8	0.5	Grayish yellowish green	None	3.6	17.1	1	0.5	<0.67	<0.54				
				Deep layer				20.8	15.1	-	None		17.8	12	5.5	<0.48	<0.71					
				Surface layer	2019/12/12	Sunny	13.2	18.4	9.1	0.5	Light grayish yellow green	None	2.5	19.0	3	1.9	<0.53	<0.92				
				Deep layer				8.7	17.4	-	None		19.3	13	7.0	<0.71	<0.66					
				66	Lake Kanna (Shimokubo Dam)	Center	Fujioka City/ Kamikawa Town	Surface layer	2019/5/20	Sunny	18.2	71.0	19.2	0.5	Grayish green	None	4.2	16.6	1	0.7	<0.55	<0.88
								Deep layer				8.4	70.0	-	None		16.2	12	13	<0.70	<0.85	
								Surface layer	2019/8/20	Rain	23.4	68.5	26.7	0.5	Grayish yellow green	None	2.9	14.2	1	1.1	<0.81	<0.88
								Deep layer				8.5	67.5	-	None		17.2	11	7.6	<0.81	<0.74	
								Surface layer	2019/10/11	Sunny	19.8	76.8	20.8	0.5	Grayish yellowish green	None	2.2	14.4	1	1.2	<0.78	<0.75
								Deep layer				8.4	75.8	-	None		16.5	2	2.3	<0.78	<0.61	
Surface layer	2019/12/13	Sunny	7.1					82.0	12.0	0.5	Light grayish yellow	None	0.4	13.4	20	23	<0.83	<0.92				
Deep layer								11.4	81.0	-	None		13.7	130	84	<0.75	<0.74					
67	Lake Hebikami (Shiozawa Dam)	Center	Kanna Town					Surface layer	2019/5/20	Sunny	22.9	10.2	19.7	0.5	Grayish green	None	3.7	17.7	<1	0.6	<0.70	<0.80
								Deep layer				9.6	9.2	-	None		20.0	5	4.8	<0.79	<0.85	
								Surface layer	2019/8/20	Sunny	26.6	6.7	20.7	0.5	Grayish yellow green	None	1.5	14.5	2	1.1	<0.69	<0.90
								Deep layer				16.2	5.7	-	None		15.9	8	3.5	<0.78	<0.67	
								Surface layer	2019/10/11	Sunny	21.1	7.0	17.0	0.5	Light grayish yellow green	None	2.3	16.7	1	0.8	<0.80	<0.55
								Deep layer				16.4	6.0	-	None		16.9	4	2.3	<0.78	<0.74	
				Surface layer	2019/12/13	Sunny	8.2	6.8	6.2	0.5	Light grayish yellow green	None	2.5	17.1	3	0.8	<0.77	<0.74				
				Deep layer				6.0	5.8	-	None		17.3	17	3.8	<0.81	<0.81					

Gunma Lakes and Reservoirs (Sediment) 1/2

Location				Sampling Date	Weather	Air temperature (°C)	Water depth (m)	Sediment													Activity concentration [Bq/kg(dry)]			Remarks		
								General items				Grain size distribution(%)					Sediment content (%)	Density (g/cm ³)	Property							
No.	Water area	Location		Municipality	Sediment temperature (°C)	Sample length (cm)	Color	Odor	Coarse gravel	Medium gravel	Fine gravel	Coarse sand	Medium sand	Fine sand	Silt	Clay				Radioactive cesium						
		Cs-134	Cs-137														Total									
L a k e s R e s e r v o i r s	Tonegawa River Area	Lake Okatone (Yagisawa Dam)	Center	Mnakami Town	2019/5/28	Cloudy	17.2	87.3	5.4	7	Olive	None	0.0	0.0	0.1	0.1	0.4	28.0	71.3	30.3	2.585	Silt	92	1,300	1,392	
					2019/8/1	Sunny	31.2	89.3	12.1	6	Grayish olive	None	0.0	0.0	0.0	0.2	0.2	0.3	27.2	72.1	41.7	2.574	Silt	37	570	607
					2019/10/18	Cloudy	13.1	84.0	12.1	8	Grayish olive	None	0.0	0.0	0.0	0.4	0.3	0.3	31.3	67.8	38.3	2.593	Silt	55	850	905
					2019/11/21	Cloudy	5.9	95.7	12.8	6	Olive	None	0.0	0.3	0.3	0.8	0.8	1.6	29.0	67.1	40.4	2.576	Silt	47	670	717
					2019/5/27	Sunny	28.3	73.3	6.8	8	Dark olive	None	0.0	0.0	0.0	0.1	0.2	1.4	39.8	58.5	27.4	2.527	Silt	200	2,600	2,800
		2019/8/2	Sunny	27.8	90.9	5.8	10	Dark olive	None	0.0	0.0	0.0	0.0	0.4	2.6	44.8	52.1	33.8	2.476	Silt	82	1,300	1,382			
		2019/10/17	Sunny	15.2	90.4	8.0	10	Dark olive	None	0.0	0.0	0.0	0.2	0.7	3.0	45.5	50.7	32.2	2.471	Silt	32	560	592			
		2019/11/21	Cloudy	7.8	94.5	9.8	5	Olive	None	0.0	0.0	0.0	0.1	0.2	0.4	38.3	61.0	32.9	2.501	Silt	86	1,200	1,286			
		2019/5/28	Cloudy	19.2	46.0	6.0	7	Grayish olive	None	0.0	0.0	0.0	0.0	0.1	0.7	43.1	56.1	30.4	2.575	Silt	44	550	594			
		2019/8/2	Sunny	29.6	46.0	8.2	7	Grayish olive	None	0.0	0.0	0.0	0.1	0.7	2.1	41.9	55.2	36.4	2.549	Silt	31	410	441			
	2019/10/18	Cloudy	18.0	38.1	8.4	8	Grayish olive	None	0.0	0.0	0.0	0.3	0.7	2.3	47.5	49.2	38.9	2.540	Silt	30	450	480				
	2019/11/21	Sunny	9.1	43.3	8.9	5	Grayish olive	None	0.0	0.0	0.0	0.0	0.1	0.3	51.8	47.8	38.7	2.519	Silt	28	370	398				
	2019/5/30	Sunny	12.8	40.2	6.0	10	Black	None	0.0	0.0	0.0	0.0	0.2	0.1	53.6	46.1	19.1	2.416	Silt	-22	130	130				
	2019/8/16	Rain	21.4	39.8	7.5	10	Black	None	0.0	0.0	0.0	0.0	0.1	0.1	52.1	47.7	27.7	2.353	Silt	-14	72	72				
	2019/10/1	Sunny	15.8	41.2	7.1	10	Black	None	0.0	0.0	0.0	0.0	0.2	0.4	52.1	47.3	18.5	2.369	Silt	33	450	483				
	2019/11/11	Sunny	5.8	40.8	6.8	10	Blackish brown	None	0.0	0.0	0.0	0.0	0.1	0.1	51.8	48.0	24.7	2.369	Silt	22	270	292				
	2019/5/27	Sunny	26.2	65.6	8.1	10	Dark olive	None	0.0	0.0	0.0	0.0	0.1	0.4	42.6	57.0	32.2	2.582	Silt	66	750	816				
	2019/8/1	Sunny	30.3	57.3	10.6	6	Dark olive	None	0.0	0.0	0.0	0.1	0.1	0.6	43.1	56.1	40.7	2.503	Silt	54	780	834				
	2019/10/17	Sunny	14.5	68.1	8.3	10	Dark olive	None	0.0	0.0	0.0	0.0	0.1	2.3	44.5	53.0	40.0	2.533	Silt	34	490	524				
	2019/12/3	Cloudy	7.1	55.2	9.0	10	Dark olive	None	0.0	0.0	0.0	0.0	0.1	1.9	36.5	61.5	42.8	2.581	Silt	49	680	729				
2019/5/8	Sunny	9.1	32.0	7.3	10	Brownish gray	None	0.0	5.2	1.7	2.1	3.1	3.4	42.2	42.3	29.4	2.670	Silt	150	1,700	1,850					
2019/8/2	Sunny	25.2	39.4	15.1	8	Grayish olive	None	0.0	0.0	0.0	0.0	0.1	0.3	33.3	66.3	34.7	2.563	Silt	97	1,400	1,497					
2019/10/8	Sunny	17.4	38.6	14.8	10	Grayish olive	None	0.0	3.8	0.4	0.9	0.6	0.6	30.5	63.7	30.1	2.585	Silt	140	2,000	2,140					
2019/11/19	Sunny	8.0	35.0	11.2	10	Grayish olive	None	0.0	1.5	0.1	0.5	0.8	3.8	46.3	47.2	30.4	2.536	Silt	190	3,000	3,190					
2019/5/27	Sunny	23.1	47.2	8.5	10	Grayish olive	None	0.0	0.0	0.0	0.0	0.0	0.1	46.3	53.5	33.3	2.551	Silt	52	760	812					
2019/8/1	Sunny	30.0	35.5	15.5	10	Grayish olive	None	0.0	0.0	0.0	0.0	0.0	0.2	44.2	55.6	38.3	2.529	Silt	49	640	689					
2019/10/17	Sunny	13.1	42.3	12.5	10	Olive black	None	0.0	0.0	0.0	0.0	0.1	0.6	57.6	41.8	42.6	2.569	Silt	30	490	520					
2019/12/3	Sunny	8.8	49.0	9.5	10	Grayish olive	None	0.0	0.0	0.0	0.0	0.1	0.1	52.6	47.1	37.9	2.503	Silt	13	250	263					
2019/5/8	Sunny	15.3	40.0	9.1	10	Brownish gray	Faint rotteness	0.0	0.0	0.0	0.0	0.3	1.4	59.5	38.8	38.3	2.546	Silt	-9.1	69	69					
2019/8/2	Sunny	31.8	27.1	20.8	6	Grayish olive	None	0.0	0.0	0.0	0.0	0.1	1.3	58.6	40.0	46.1	2.519	Silt	-7.9	70	70					
2019/10/8	Sunny	22.1	29.9	17.6	10	Grayish olive	None	0.0	0.0	0.0	0.0	0.2	1.3	60.9	37.6	44.4	2.491	Silt	7.6	100	107.6					
2019/12/4	Sunny	2.4	39.2	8.3	5	Grayish olive	None	0.0	0.0	0.0	0.0	0.1	6.5	66.8	26.6	46.1	2.527	Silt	-8.2	58	58					
2019/5/8	Sunny	13.9	18.5	8.2	10	Grayish yellowish brown	Faint sewage	0.0	2.3	1.5	5.5	28.8	11.8	32.2	17.9	35.3	2.500	Silt	-11	49	49					
2019/8/1	Sunny	28.6	18.0	12.7	10	Blackish brown	None	0.0	1.1	0.7	1.0	0.7	0.8	66.9	28.9	16.7	2.182	Silt	-21	200	200					
2019/10/1	Sunny	19.5	17.0	12.9	10	Blackish brown	None	0.0	0.0	0.0	0.0	0.1	0.3	58.8	40.8	15.9	2.147	Silt	120	1,600	1,720					
2019/11/11	Sunny	8.8	17.4	10.6	10	Blackish brown	None	0.0	0.0	0.0	0.0	0.1	0.6	52.3	47.0	17.2	2.204	Silt	91	1,400	1,491					
2019/5/15	Sunny	14.7	45.0	7.1	10	Olive brown	None	0.0	0.0	0.0	0.2	0.3	0.2	62.3	37.0	33.7	2.532	Silt	39	590	629					
2019/8/16	Rain	22.5	18.0	9.9	5	Olive brown	None	0.0	0.0	0.0	0.0	0.1	1.3	52.9	45.6	35.9	2.472	Silt	74	1,100	1,174					
2019/10/3	Cloudy	18.7	31.0	8.5	10	Olive brown	None	0.0	0.0	0.0	0.0	0.1	0.7	54.8	44.4	36.3	2.519	Silt	42	560	602					
2019/12/9	Sunny	5.8	43.2	7.4	10	Olive brown	None	0.0	0.0	0.0	0.0	0.2	1.4	61.6	36.8	39.0	2.452	Silt	19	350	369					
2019/5/15	Sunny	20.5	6.9	12.1	7	Olive black	Faint sewage	0.0	0.0	0.0	0.1	1.2	36.0	43.6	19.0	24.6	2.489	Silt	26	260	286					
2019/8/16	Cloudy	24.1	7.3	19.5	5	Olive black	Faint sewage	0.0	0.0	0.0	0.3	1.6	43.9	34.8	19.4	29.8	2.488	Silt	-12	250	250					
2019/10/3	Cloudy	21.2	6.9	18.0	5	Olive black	None	0.0	0.0	0.0	0.0	0.5	36.5	46.4	16.5	38.3	2.547	Silt	15	220	235					
2019/12/9	Cloudy	5.4	2.8	7.6	5	Olive brown	None	0.0	25.0	29.4	13.8	16.6	11.2	1.8	2.3	73.5	2.724	Gravel/sand	-6.8	47	47					
2019/5/23	Sunny	23.0	2.3	15.0	10	Black	None	0.0	0.0	0.0	0.0	0.1	1.7	72.9	25.4	21.5	2.283	Silt	-22	360	360					
2019/8/26	Sunny	24.2	1.5	17.8	10	Black	None	0.0	0.0	0.0	0.0	0.1	0.7	67.7	31.5	25.7	2.280	Silt	26	280	306					
2019/10/4	Sunny	20.6	1.8	17.1	10	Blackish brown	None	0.0	0.0	0.0	0.0	0.1	0.2	37.8	61.9	21.1	2.220	Silt	40	660	700					
2019/11/26	Cloudy	7.4	2.7	8.0	10	Black	None	0.0	0.0	0.0	0.0	0.0	0.2	49.9	49.7	28.8	2.260	Silt	21	370	391					

Gunma Lakes and Reservoirs (Sediment) 2/2

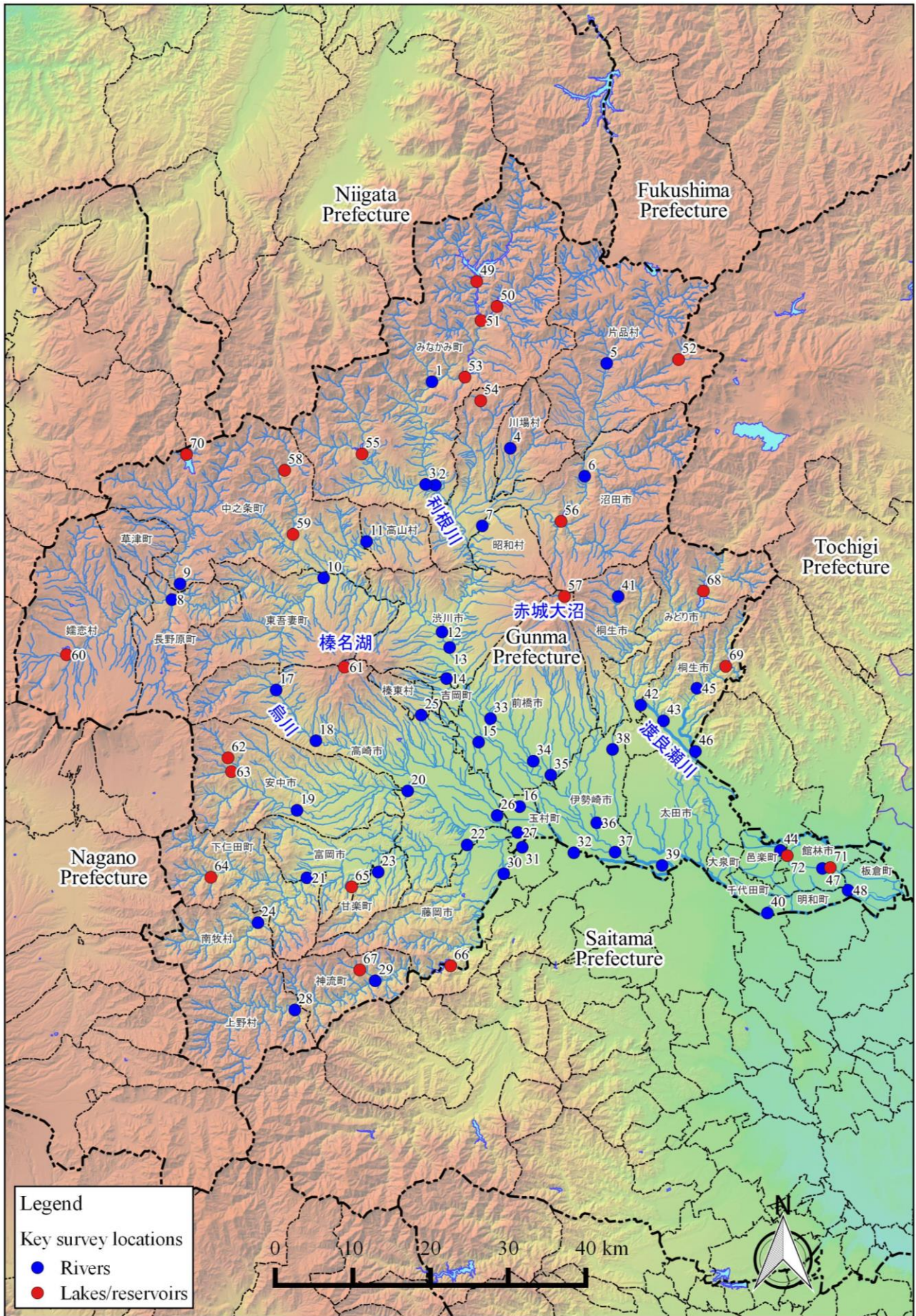
Location				Sampling Date	Weather	Air temperature (°C)	Water depth (m)	Sediment														Activity concentration [Bq/kg(dry)]			Remarks		
No.	Water area	Location	Municipality					Sediment temperature (°C)	Sample length (cm)	Color	Odor	Grain size distribution(%)								Sediment content (%)	Density (g/cm ³)	Property	Radioactive cesium				
												Coarse gravel	Medium gravel	Fine gravel	Coarse sand	Medium sand	Fine sand	Silt	Clay				Cs-134	Cs-137		Total	
Lakes and Reservoirs	61	Lake Haruna	Center	Takasaki City	2019/5/13	Sunny	15.4	14.9	7.6	10	Black	None	0.0	0.0	0.0	0.1	0.4	0.4	53.6	45.5	7.9	2,179	Silt	56	700	756	
					2019/8/27	Sunny	18.4	14.2	11.2	10	Black	Faint sewage	0.0	0.0	0.0	0.0	0.2	0.5	41.4	57.9	10.2	2,152	Silt	-32	220	220	
					2019/10/3	Closely	17.8	14.0	10.1	10	Black	Faint sewage	0.0	0.0	0.0	0.0	0.3	0.7	36.9	62.2	10.1	2,144	Silt	-44	160	160	
					2019/11/5	Sunny	7.3	14.5	8.7	10	Black	Faint sewage	0.0	0.0	0.0	0.1	0.2	0.6	42.4	56.7	10.9	2,179	Silt	-36	100	100	
					2019/5/21	Rain	19.2	21.0	9.0	10	Blackish brown	Faint hydrogen sulfide	0.0	0.0	0.0	0.0	0.1	0.4	67.6	31.9	30.1	2,529	Silt	23	340	363	
	62	Lake Kirizumi (Kirizumi Dam)	Center	Annaka City	2019/8/19	Closely	24.4	12.9	10.1	10	Grayish yellowish brown	None	0.0	0.0	0.0	0.1	0.1	14.0	65.3	20.5	42.7	2,481	Silt	17	270	287	
					2019/10/10	Sunny	16.9	12.9	10.5	10	Blackish brown	None	0.0	0.0	0.0	0.2	1.8	70.9	26.4	40.7	2,429	Silt	31	400	431		
					2019/12/12	Sunny	12.1	6.2	6.4	10	Brown	None	0.0	0.0	0.0	0.0	0.1	6.6	69.0	24.3	36.7	2,454	Silt	14	240	254	
					2019/5/21	Rain	19.0	12.5	7.5	10	Blackish brown	Faint hydrogen sulfide	0.0	0.0	0.0	0.0	0.1	1.3	68.4	30.2	21.6	2,328	Silt	68	700	768	
					2019/8/19	Closely	25.5	12.5	8.1	10	Blackish brown	None	0.0	0.0	0.0	0.1	0.1	1.3	66.5	32.1	34.6	2,320	Silt	36	540	576	
	63	Lake Usui (Sakamoto Dam)	Center	Annaka City	2019/10/10	Sunny	17.7	12.9	9.7	10	Blackish brown	None	0.0	0.0	0.0	0.2	1.9	71.3	26.7	30.6	2,318	Silt	42	530	572		
					2019/12/12	Sunny	11.8	13.8	7.5	10	Dark brown	None	0.0	0.0	0.0	0.0	0.4	27.5	57.6	14.5	50.1	2,567	Silt	<-7.0	110	110	
					2019/5/21	Sunny	22.7	32.0	7.1	10	Brownish gray	None	0.0	0.0	0.0	0.0	0.0	0.1	53.7	46.3	28.6	2,559	Silt	21	250	271	
					2019/8/19	Closely	27.6	23.4	15.1	10	Brownish gray	None	0.0	0.0	0.0	0.0	0.1	0.3	46.8	52.8	26.7	2,554	Silt	31	400	431	
					2019/10/10	Sunny	20.2	23.0	16.5	10	Brownish gray	None	0.0	0.0	0.0	0.0	0.0	0.1	49.3	50.6	37.3	2,552	Silt	16	290	306	
	64	Karasu River Area	Lake Arafune (Doshiragawa Dam)	Center	Shimonita Town	2019/12/12	Sunny	14.2	27.2	10.8	10	Dull yellowish brown	None	0.0	0.0	0.0	0.0	0.3	55.4	44.4	44.7	2,605	Silt	<-8.2	160	160	
						2019/5/20	Sunny	24.1	15.0	15.4	10	Brownish gray	None	0.0	0.0	0.0	0.0	0.1	0.2	31.1	68.6	26.0	2,554	Silt	35	420	455
						2019/8/20	Closely	25.5	13.2	21.7	10	Grayish olive	None	0.0	0.0	0.0	0.1	0.1	0.1	32.3	67.4	31.4	2,529	Silt	23	290	313
						2019/10/10	Sunny	22.4	16.1	20.1	10	Blackish brown	None	0.0	0.0	0.0	0.0	0.0	0.2	33.7	66.0	34.6	2,560	Silt	30	430	460
						2019/12/12	Sunny	13.2	18.4	9.2	10	Dark olive	None	0.0	0.0	0.0	0.0	3.8	3.5	3.7	32.0	57.2	36.9	2,597	Silt	<-9.9	130
65	Lake Oshio (Oshio Dam)	Center	Tomioka City	2019/5/20	Sunny	18.2	71.0	8.2	10	Brownish gray	None	0.0	0.0	0.0	0.0	0.0	14.4	85.6	35.1	2,792	Silt	<-12	71	71			
				2019/8/20	Rain	23.4	68.5	11.9	10	Brownish gray	None	0.0	0.0	0.0	0.0	0.1	0.1	12.9	87.0	47.8	2,700	Silt	8.5	92	100.5		
				2019/10/11	Sunny	19.8	76.8	9.5	10	Grayish yellowish brown	None	0.0	0.0	0.0	0.0	0.0	0.0	9.6	90.4	41.6	2,699	Silt	10	120	130		
				2019/12/13	Sunny	7.1	82.0	11.8	10	Yellowish brown	None	0.0	0.0	0.0	0.0	0.0	0.3	31.5	68.2	50.8	2,679	Silt	<-7.6	89	89		
				2019/5/20	Sunny	22.9	10.2	9.5	10	Blackish brown	None	0.0	0.0	0.0	0.0	0.0	0.1	69.7	28.5	27.7	2,449	Silt	21	270	291		
66	Lake Kama (Shimokubo Dam)	Center	Fujioka City/Kamakura Town	2019/8/20	Sunny	26.6	6.7	14.4	10	Blackish brown	None	0.0	0.0	0.0	0.0	0.2	1.6	61.1	37.1	30.9	2,421	Silt	22	240	262		
				2019/10/11	Sunny	21.1	7.0	16.9	10	Brownish gray	None	0.0	0.0	0.0	0.0	7.8	31.5	41.7	19.0	46.2	2,619	Silt	<-7.3	100	100		
				2019/12/13	Sunny	8.2	6.8	7.0	6	Grayish olive	None	0.0	0.0	0.0	0.4	23.2	46.4	19.9	10.0	75.8	2,715	Sand/silt	<-7.5	35	35		
				2019/5/7	Sunny	14.6	39.0	8.4	5	Grayish yellowish brown	None	0.0	0.0	0.5	1.8	4.4	5.5	22.1	39.6	26.3	43.8	2,559	Silt	36	510	546	
				2019/8/1	Sunny	28.8	22.1	15.4	8	Blackish brown	None	0.0	0.0	0.0	0.0	0.1	6.3	72.2	21.4	48.1	2,552	Silt	9.7	160	169.7		
67	Lake Hebikani (Shiozawa Dam)	Center	Kama Town	2019/10/7	Sunny	16.4	36.2	18.2	10	Blackish brown	None	0.0	0.0	0.0	0.0	0.2	5.6	73.0	21.2	49.6	2,517	Silt	14	220	234		
				2019/12/18	Sunny	12.0	45.5	10.1	4	Grayish yellowish brown	None	0.0	0.0	0.0	0.1	0.1	19.8	59.7	20.4	57.4	2,628	Sand	12	130	142		
				2019/5/10	Sunny	20.6	33.2	10.4	10	Grayish olive	None	0.0	0.0	0.0	0.0	0.3	0.6	37.4	61.7	20.1	2,450	Silt	39	430	469		
				2019/8/15	Closely	26.8	27.2	8.0	10	Grayish olive	None	0.0	0.0	0.0	0.1	0.1	0.5	41.2	58.1	28.9	2,413	Silt	47	570	617		
				2019/10/7	Sunny	22.3	24.5	9.7	10	Grayish olive	None	0.0	0.0	0.1	0.1	0.1	0.1	40.0	59.6	30.1	2,513	Silt	<-12	71	71		
68	Watarase River Area	Lake Umeda (Kiryugawa Dam)	Center	Kiryu City	2019/12/4	Sunny	12.2	33.5	10.0	10	Grayish olive	None	0.0	0.0	0.0	0.0	0.1	0.3	40.3	59.3	24.8	2,440	Silt	29	470	499	
					2019/5/23	Sunny	15.2	20.8	8.1	10	Dark grayish yellow	None	0.0	0.0	0.3	0.5	3.2	9.3	73.1	13.6	29.8	2,431	Silt	79	970	1,049	
					2019/8/26	Sunny	19.0	18.0	13.1	10	Brown	None	0.0	0.0	0.0	0.2	0.3	0.9	62.8	35.9	31.6	2,445	Silt	59	950	1,009	
					2019/10/4	Closely	14.8	22.0	13.8	10	Grayish yellowish brown	None	0.0	0.0	0.0	0.0	0.1	0.9	64.8	34.3	32.5	2,448	Silt	84	930	1,014	
					2019/11/26	Sunny	0.6	25.3	7.7	10	Dull yellowish brown	None	0.0	0.0	0.0	0.0	0.0	0.0	67.0	31.5	32.0	2,472	Silt	52	620	672	
69	Nakatani River Area	Lake Nozori (Nozori Dam)	Center	Nakanogjo Town	2019/5/9	Sunny	19.2	1.8	20.4	10	Black	None	0.0	0.0	0.1	5.7	4.2	42.0	48.0	18.0	2,418	Silt	28	300	328		
					2019/8/28	Rain	25.4	1.5	26.5	10	Black	None	0.0	0.0	0.0	0.2	1.0	48.4	50.4	22.8	2,392	Silt	23	340	363		
					2019/10/23	Sunny	24.1	1.5	21.9	10	Black	None	0.0	0.0	0.0	0.0	0.1	1.2	47.5	51.2	22.9	2,410	Silt	22	360	382	
					2019/12/5	Sunny	11.2	1.8	11.7	10	Black	None	0.0	0.0	0.0	0.0	0.0	0.1	1.3	41.2	57.4	21.6	2,378	Silt	<-16	310	310
					2019/5/9	Closely	19.4	6.2	15.7	10	Olive black	None	0.0	0.0	0.0	0.0	0.2	38.7	61.0	18.2	2,383	Silt	<-30	240	240		
70	Watarase River Area	Lake Tataranuma	Center	Tatebayashi City	2019/8/28	Closely	25.4	6.0	24.2	10	Olive black	None	0.0	0.0	0.0	0.0	0.1	0.2	38.9	60.8	24.4	2,380	Silt	14	170	184	
					2019/10/23	Sunny	22.2	4.5	18.6	10	Olive black	None	0.0	0.0	0.0	0.0	0.1	0.2	44.4	55.3	23.4	2,394	Silt	16	180	196	
					2019/12/5	Sunny	6.2	5.2	9.7	10	Olive black	None	0.0	0.0	0.0	0.0	0.1	0.3	39.2	60.4	21.8	2,328	Silt	<-16	150	150	

Gunma Lakes and Reservoirs (Surrounding Environment) 1/3

No.	Water area	Location			Sampling Date	Weather	Air temperature (°C)	Surrounding Environment(Soil,Air dose)							Remarks	
								Soil				Air Dose (μSv/h)				
		General items						Activity concentration [Bq/kg(dry)]								
		Color	Odor	Property					Radioactive cesium							
			Cs-134	Cs-137	Total											
L a k e s a n d R e s e r v o i r s	Tonegawa River Area	Lake Okutone (Yagisawa Dam)	Center	Minakami Town	2019/5/28	Cloudy	17.2	Brown	Faint earth	Loamy	21	300	321	0.12		
					2019/8/1	Sunny	31.2	Brown	Faint earth	Loamy	12	140	152	0.10		
					2019/10/18	Cloudy	13.1	Dull yellowish brown	Faint earth	Loamy	81	1,100	1,181	0.11		
			2019/11/21		Cloudy	5.9	Grayish yellowish brown	Faint earth	Loamy	35	550	585	0.11			
			2019/5/27		Sunny	28.3	Dull yellow	None	Loamy	160	1,900	2,060	0.15			
			2019/8/2		Sunny	27.8	Olive brown	None	Loamy	80	1,200	1,280	0.14			
			2019/10/17		Sunny	15.2	Yellowish brown	None	Loamy	15	150	165	0.14			
			2019/11/21		Cloudy	7.8	Dull yellowish brown	Faint earth	Loamy	18	300	318	0.14			
			2019/5/28		Cloudy	19.2	Dull yellowish brown	Faint earth	Loamy	68	1,000	1,068	0.12			
		Lake Dogen (Sudagai Dam)	Center	Center	Minakami Town	2019/8/2	Sunny	29.6	Dark brown	Faint earth	Loamy	47	540	587	0.10	
						2019/10/18	Cloudy	18.0	Grayish yellowish brown	Faint earth	Loamy	33	550	583	0.12	
						2019/11/21	Sunny	9.1	Dull yellowish brown	Faint earth	Loamy	43	640	683	0.11	
		Lake Marunuma (Marunuma Dam)	Center	Center	Katashina Village	2019/5/30	Sunny	12.8	Dark olive brown	Faint earth	Loamy	6.7	100	106.7	0.08	
						2019/8/16	Rain	21.4	Dark grayish yellow	Faint earth	Loamy	17	280	297	0.07	
						2019/10/1	Sunny	15.8	Olive brown	Faint earth	Loamy	6.6	87	93.6	0.07	
						2019/11/11	Sunny	5.8	Dark brown	Faint earth	Loamy	14	200	214	0.06	
		Lake Fujiwara (Fujiwara Dam)	Center	Center	Minakami Town	2019/5/27	Sunny	26.2	Dark brown	Faint earth	Loamy	67	830	897	0.05	
						2019/8/1	Sunny	30.3	Dark brown	Faint earth	Loamy	52	640	692	0.05	
						2019/10/17	Sunny	14.5	Dull yellowish brown	Faint earth	Loamy	17	270	287	0.06	
		Lake Tanbara (Tanbara Dam)	Center	Center	Numata City	2019/12/3	Cloudy	7.1	Dark brown	Faint earth	Loamy	36	570	606	0.04	
						2019/5/8	Sunny	9.1	Blackish brown	None	Loamy	69	820	889	0.12	
						2019/8/2	Sunny	25.2	Dull yellowish brown	Faint earth	Loamy	33	450	483	0.11	
						2019/10/8	Sunny	17.4	Dull yellowish brown	Faint earth	Loamy	28	480	508	0.09	
		Lake Akaya (Aimata Dam)	Center	Center	Minakami Town	2019/11/19	Sunny	8.6	Dull yellowish brown	Faint earth	Loamy	51	830	881	0.12	
						2019/5/27	Sunny	23.1	Dark brown	Faint earth	Loamy	59	830	889	0.06	
						2019/8/1	Sunny	30.0	Blackish brown	Faint earth	Loamy	33	530	563	0.05	
						2019/10/17	Sunny	13.1	Blackish brown	Faint earth	Loamy	40	520	560	0.05	
						2019/12/3	Sunny	8.8	Blackish brown	Faint earth	Loamy	26	390	416	0.06	
Lake Sonohara (Sonohara Dam)	Center	Center	Numata City	2019/5/8	Sunny	15.3	Blackish brown	None	Loamy	27	400	427	0.06			
				2019/8/2	Sunny	31.8	Blackish brown	Faint earth	Loamy	52	650	702	0.06			
				2019/10/8	Sunny	22.1	Blackish brown	Faint earth	Loamy	39	610	649	0.07			
				2019/12/4	Sunny	2.4	Blackish brown	Faint earth	Loamy	51	710	761	0.07			
Lake Akagionuma	Center	Center	Maebashi City	2019/5/8	Sunny	13.9	Dull yellowish brown	None	Loamy	10	150	160	0.04			
				2019/8/1	Sunny	28.6	Dark brown	Faint earth	Loamy	26	390	416	0.04			
				2019/10/1	Sunny	19.5	Dark brown	Faint earth	Loamy	11	120	131	0.04			
				2019/11/11	Sunny	8.8	Dark brown	Faint earth	Loamy	59	940	999	0.05			

Gunma Lakes and Reservoirs (Surrounding Environment) 2/3

L a k e s a n d R e s e r v o i r s	Location				Sampling Date	Weather	Air temperature (°C)	Surrounding Environment(Soil,Air dose)						Remarks	
	No.	Water area	Location					Municipality	Soil			Air Dose (μSv/h)			
									General items						
									Color	Odor	Property		Activity concentration [Bq/kg(dry)]		
Radioactive cesium															
						Cs-134	Cs-137	Total							
60	58	Agatsuma River Area	Lake Okushima (Shimagawa Dam)	Center	Nakanajo Town	2019/5/15	Sunny	14.7	Dull yellowish brown	Faint earth	Loamy	130	2,000	2,130	0.09
						2019/8/16	Rain	22.5	Brown	Faint earth	Loamy	44	660	704	0.08
						2019/10/3	Cloudy	18.7	Brown	Faint earth	Loamy	82	1,200	1,282	0.09
			2019/12/9	Sunny		5.8	Dark brown	Faint earth	Loamy	360	5,900	6,260	0.08		
			2019/5/15	Sunny		20.5	Blackish brown	Faint earth	Loamy	18	270	288	0.06		
			2019/8/16	Cloudy		24.1	Blackish brown	Faint earth	Loamy	28	280	308	0.04		
	59	Lake Shimako (Nakanajo Dam)	Center	Tsumagoi Village	2019/10/3	Cloudy	21.2	Dark brown	Faint earth	Loamy	50	830	880	0.06	
					2019/12/9	Cloudy	5.4	Dark brown	Faint earth	Loamy	71	960	1,031	0.06	
					2019/5/23	Sunny	23.0	Blackish brown	Faint earth	Loamy	29	300	329	0.04	
	61	Lake Haruna	Center	Tasakaki City	2019/8/26	Sunny	24.2	Blackish brown	Faint earth	Loamy	27	350	377	0.04	
					2019/10/4	Sunny	20.6	Dark brown	Faint earth	Loamy	13	200	213	0.05	
					2019/11/26	Cloudy	7.4	Dark brown	Faint earth	Loamy	17	270	287	0.04	
					2019/5/13	Sunny	15.4	Black	Faint earth	Loamy	71	990	1,061	0.08	
					2019/8/27	Sunny	18.4	Blackish brown	Faint earth	Loamy	65	980	1,045	0.07	
					2019/10/3	Cloudy	17.8	Blackish brown	Faint earth	Loamy	83	1,200	1,283	0.09	
	62	Lake Kirizumi (Kirizumi Dam)	Center	Annaka City	2019/11/5	Sunny	7.3	Blackish brown	Faint earth	Loamy	64	900	964	0.09	
					2019/5/21	Rain	19.2	Brown	None	Loamy	73	1,100	1,173	0.05	
					2019/8/19	Cloudy	24.4	Brown	None	Loamy	97	1,300	1,397	0.05	
2019/10/10					Sunny	16.9	Brown	None	Loamy	37	630	667	0.04		
2019/12/12					Sunny	12.1	Yellowish brown	Faint earth	Loamy	45	670	715	0.05		
2019/5/21					Rain	19.0	Blackish brown	None	Loamy	8.4	110	118.4	0.05		
63	Lake Usuiko (Sakamoto Dam)	Center	Shimonita Town	2019/8/19	Cloudy	25.5	Dark brown	None	Loamy	97	1,100	1,197	0.05		
				2019/10/10	Sunny	17.7	Dark brown	None	Loamy	31	460	491	0.05		
				2019/12/12	Sunny	11.8	Dark brown	Faint earth	Loamy	53	870	923	0.05		
				2019/5/21	Sunny	22.7	Blackish brown	None	Loamy	14	220	234	0.05		
				2019/8/19	Cloudy	27.6	Dark brown	None	Loamy	21	300	321	0.06		
				2019/10/10	Sunny	20.2	Brown	None	Loamy	17	230	247	0.05		
64	Lake Arafune (Dodairagawa Dam)	Center	Tomioka City	2019/12/12	Sunny	14.2	Brown	None	Loamy	8.5	110	118.5	0.04		
				2019/5/20	Sunny	24.1	Dull yellowish brown	None	Loamy	43	630	673	0.06		
				2019/8/20	Cloudy	25.5	Dark brown	None	Loamy	19	190	209	0.06		
				2019/10/10	Sunny	22.4	Dark brown	None	Loamy	35	450	485	0.08		
				2019/12/12	Sunny	13.2	Dark brown	None	Loamy	29	460	489	0.06		
				2019/5/20	Sunny	24.1	Dull yellowish brown	None	Loamy	43	630	673	0.06		



Survey Locations (Gunma Prefecture)