

FY2019 Tochigi Prefecture Survey Results

[Outline of results]

(1) Water

Rivers

Radioactive cesium (Cs-134, Cs-137): Not detectable at any location

Lakes and reservoirs

Radioactive cesium (Cs-134, Cs-137): Not detectable at any location

(2) Sediments

Rivers

Cs-134: ND - 14 Bq/kg (dry)

Cs-137: 1.6 - 190 Bq/kg (dry)

Lakes and reservoirs

Cs-134: ND - 130 Bq/kg (dry)

Cs-137: 19 - 1,800 Bq/kg (dry)

(3) Surrounding Environment

(a) Soil

Rivers

Cs-134: ND - 490 Bq/kg (dry)

Cs-137: 2.8 - 6,600 Bq/kg (dry)

Lakes and reservoirs

Cs-134: ND - 61 Bq/kg (dry)

Cs-137: 4.4 - 960 Bq/kg (dry)

(b) Ambient dose rate

Rivers

0.04 - 0.16 μ Sv/h

Lakes and reservoirs

0.04 - 0.12 μ Sv/h

Tochigi River (Water) 1/6

R i v e r s	Location				Sampling Date	Weather	Air temperature (°C)	Water depth (m)	Water										Remarks			
	No.	Water area	Location	Municipality					General items						Activity concentration(Bq/L)							
									Water temperature (°C)	Sampling depth (m)	Color	Odor	Transparency (cm)	Electrical conductivity (mS/m)	SS (mg/L)	Turbidity (FNU)	Radioactive cesium					
				Cs-134	Cs-137																	
1	2	Nakagawa River	Ikuyobashishita	Nasushiobara City	2019/5/28	Cloudy	20.0	0.3	12.9	0.0	Light grayish yellow green	None	>100	13.6	<1	0.2	<-0.51	<-0.80				
					2019/8/15	Cloudy	25.2	0.3	17.6	0.0	Light grayish yellow green	None	>100	13.2	1	0.3	<-0.72	<-0.70				
					2019/11/1	Sunny	13.9	0.3	10.9	0.0	Light grayish yellow green	None	>100	9.7	<1	0.3	<-0.88	<-0.70				
					2020/2/3	Cloudy	7.0	0.3	7.5	0.0	Light grayish yellow green	None	>100	15.2	1	0.8	<-0.69	<-0.80				
					2019/5/28	Cloudy	22.2	0.3	14.9	0.0	Light grayish greenish yellow	None	>100	11.0	9	1.6	<-0.58	<-0.74				
					2019/8/15	Sunny	28.3	0.3	17.9	0.0	Light grayish greenish yellow	None	>100	10.0	2	0.5	<-0.75	<-0.55				
		3	Takaomata River	Takaomata Bridge	Nasu Town	2019/11/1	Sunny	16.1	0.5	11.7	0.0	Light grayish yellow green	None	>100	8.6	2	1.6	<-0.78	<-0.48			
						2020/2/3	Cloudy	7.2	0.3	4.8	0.0	Light grayish greenish yellow	None	>100	14.2	1	0.8	<-0.85	<-0.70			
						2019/5/28	Cloudy	22.5	0.2	14.5	0.0	Grayish yellow	None	>100	17.2	1	0.5	<-0.75	<-0.80			
						2019/8/15	Sunny	28.8	0.2	20.0	0.0	Grayish yellow	None	>100	16.4	9	1.7	<-0.72	<-0.55			
						2019/11/1	Sunny	16.5	0.2	12.0	0.0	Grayish yellow	None	>100	16.9	6	0.6	<-0.75	<-0.55			
						2020/2/3	Sunny	7.6	0.3	7.0	0.0	Grayish yellow	None	>100	16.6	7	1.5	<-0.71	<-0.74			
	4	Yukawa River	Yukawa Bridge	Nasu Town	2019/5/28	Cloudy	24.8	0.2	16.9	0.0	Light grayish yellow green	None	84	28.8	6	3.4	<-0.92	<-0.74				
					2019/8/15	Sunny	28.8	0.1	21.1	0.0	Light grayish yellow green	None	>100	26.2	9	3.0	<-0.58	<-0.66				
					2019/11/1	Sunny	17.1	0.1	14.0	0.0	Light grayish yellow green	None	>100	24.9	6	2.1	<-0.88	<-0.74				
					2020/2/3	Sunny	8.1	0.1	8.7	0.0	Light grayish yellow green	None	>100	32.5	8	4.2	<-0.80	<-0.61				
					2019/5/7	Sunny	11.5	0.3	11.7	0.0	Light grayish yellow green	None	>100	13.3	7	2.4	<-0.68	<-0.61				
					2019/6/6	Sunny	23.0	0.2	19.0	0.0	Light grayish yellow green	None	>100	21.4	10	5.2	<-0.73	<-0.90				
	5	Nakagawa River	Kamikuroiso	Nasushiobara City/ Nasu Town	2019/7/1	Cloudy	22.0	0.3	16.0	0.0	Light grayish yellow green	None	>100	13.6	7	2.7	<-0.87	<-0.67				
					2019/8/3	Sunny	30.3	0.2	19.6	0.0	Light grayish yellow green	None	>100	15.4	6	0.8	<-0.87	<-0.85				
					2019/9/10	Sunny	26.1	0.4	18.7	0.0	Light grayish yellow green	None	>100	12.6	5	2.0	<-0.95	<-0.74				
					2019/11/1	Sunny	21.0	0.3	15.7	0.0	Light grayish yellow green	None	>100	14.6	4	0.5	<-0.69	<-0.61				
					2020/2/3	Cloudy	4.9	0.3	5.3	0.0	Light grayish yellow green	None	>100	20.4	7	2.7	<-0.71	<-0.92				
					2019/5/7	Sunny	13.0	0.4	12.7	0.0	Grayish yellow	None	>100	15.2	2	1.2	<-0.78	<-0.67				
					6	Yosasa River	Yosasa Bridge	Nasu Town	2019/8/3	Sunny	29.8	0.3	19.6	0.0	Grayish yellow	None	>100	13.4	3	0.6	<-0.82	<-0.80
									2019/11/1	Sunny	19.7	0.3	15.1	0.0	Grayish yellow	None	>100	14.2	<1	0.2	<-0.46	<-0.74
									2020/2/3	Cloudy	3.0	0.3	4.2	0.0	Grayish yellow	None	>100	18.3	<1	0.2	<-0.88	<-0.74
									2019/5/7	Sunny	14.2	0.5	14.1	0.0	Grayish yellow green	None	39	10.1	19	6.8	<-0.79	<-0.74
									2019/8/3	Sunny	33.5	0.3	22.4	0.0	Light grayish yellow green	None	>100	10.5	4	0.8	<-0.77	<-0.67
									2019/11/1	Sunny	21.2	0.4	15.9	0.0	Light grayish yellow green	None	>100	10.0	1	0.5	<-0.67	<-0.70
	7	Kurokawa River	Shinden Bridge	Nasu Town	2020/2/3	Cloudy	4.8	0.2	4.5	0.0	Light grayish yellow green	None	>100	10.8	4	2.1	<-0.73	<-0.92				
					2019/5/7	Cloudy	14.5	0.3	14.9	0.0	Grayish yellow green	None	38	14.9	16	6.4	<-0.65	<-0.66				
					2019/6/6	Sunny	27.6	0.2	20.9	0.0	Light grayish yellow green	None	>100	21.7	5	3.1	<-0.77	<-0.85				
					2019/7/1	Cloudy	23.2	0.3	17.5	0.0	Light grayish yellow green	None	>100	10.9	14	7.1	<-0.75	<-0.94				
					2019/8/3	Sunny	33.3	0.2	22.7	0.0	Light grayish yellow green	None	>100	11.9	3	1.2	<-0.75	<-0.85				
					2019/9/10	Sunny	30.9	0.4	22.0	0.0	Light grayish yellow green	None	65	11.8	9	3.4	<-0.81	<-0.85				
					2019/11/1	Sunny	21.5	0.3	16.1	0.0	Light grayish yellow green	None	>100	11.9	<1	0.4	<-0.72	<-0.74				
					2020/2/3	Cloudy	4.6	0.1	4.8	0.0	Light grayish yellow green	None	>100	11.0	2	1.2	<-0.80	<-0.61				
					8	Yosasa River	Kawada Bridge	Otawara City	2019/5/7	Sunny	18.6	0.3	14.9	0.0	Grayish yellow green	None	>100	14.7	10	3.5	<-0.75	<-0.90
									2019/6/6	Sunny	28.2	0.3	20.7	0.0	Light grayish yellow green	None	>100	17.5	9	3.9	<-0.64	<-0.80
									2019/7/1	Cloudy	24.4	0.3	18.5	0.0	Light grayish yellow green	None	>100	13.0	11	4.5	<-0.86	<-0.67
									2019/8/3	Sunny	36.0	0.2	26.4	0.0	Light grayish yellow green	None	>100	14.6	2	0.9	<-0.79	<-0.80
2019/9/10	Sunny	33.2	0.2	24.4					0.0	Grayish yellow green	None	89	14.8	7	2.5	<-0.71	<-0.80					
2019/11/2	Sunny	16.0	0.2	13.1					0.0	Light grayish yellow green	None	>100	13.1	<1	0.4	<-0.80	<-0.61					
9	Nakagawa River	Kurobane	Otawara City	2020/2/3	Sunny	8.9	0.1	11.2	0.0	Light grayish yellow green	None	>100	15.9	4	1.8	<-0.60	<-0.97					

Tochigi River (Water) 2/6

No.	Location			Sampling Date	Weather	Air temperature (°C)	Water depth (m)	Water										Remarks		
	Water area	Location	Municipality					General items						Activity concentration(Bq/L)						
								Water temperature (°C)	Sampling depth (m)	Color	Odor	Transparency (cm)	Electrical conductivity (μS/m)	SS (mg/L)	Turbidity (FNU)	Radioactive cesium Cs-134	Cs-137			
R i v e r s	10	Matsuba River	Tributary	Otawara City	2019/5/7	Sunny	18.5	0.4	15.8	0.0	Grayish yellow green	None	>100	69	13.1	6	4.0	<0.77	<0.48	
					2019/6/6	Sunny	28.5	0.2	20.3	0.0	Light grayish yellow green	None	>100	13.6	12	6.7	<0.75	<0.74		
					2019/7/1	Cloudy	24.3	0.3	17.6	0.0	Light grayish yellow green	None	>100	7.9	13	5.8	<0.72	<0.74		
					2019/8/3	Sunny	35.5	0.2	25.3	0.0	Light grayish yellow green	None	>100	10.1	3	0.7	<0.68	<0.74		
					2019/9/10	Sunny	34.5	0.2	22.1	0.0	Grayish greenish yellow	None	>100	8.6	6	2.0	<0.96	<0.74		
					2019/11/2	Sunny	16.7	0.2	13.5	0.0	Light grayish yellow green	None	>100	8.4	<1	0.3	<0.70	<0.55		
		11	Sabigawa River		Udagawa Bridge	Otawara City	2020/2/3	Sunny	11.9	0.2	6.9	0.0	Light grayish yellow green	None	>100	9.8	2	1.4	<0.86	<0.88
							2019/5/4	Sunny	24.7	0.2	20.7	0.0	Light grayish yellow green	None	>100	14.3	9	2.3	<0.75	<0.85
							2019/8/3	Sunny	30.2	0.3	20.0	0.0	Light grayish yellow green	None	>100	13.8	5	0.6	<0.64	<0.80
							2019/11/2	Sunny	13.4	0.3	15.7	0.0	Light grayish yellow green	None	>100	14.1	2	0.4	<0.86	<0.74
							2020/2/7	Sunny	1.7	0.3	8.7	0.0	Light grayish yellow green	None	>100	14.3	1	0.6	<0.73	<0.86
							2019/5/4	Sunny	24.9	0.4	16.5	0.0	Grayish yellow green	None	>100	18.6	2	0.9	<0.77	<0.88
	12	Momura River	Momuranaka Bridge	Otawara City	2019/8/3	Sunny	28.2	0.4	18.4	0.0	Light grayish yellow green	None	>100	17.7	1	0.4	<0.58	<0.67		
					2019/11/2	Sunny	12.2	0.4	16.3	0.0	Light grayish yellow green	None	>100	18.9	2	0.3	<0.81	<0.61		
					2020/2/7	Sunny	-2.5	0.2	13.3	0.0	Light grayish yellow green	None	>100	19.0	5	1.9	<0.49	<0.81		
					2019/5/27	Sunny	29.9	0.3	17.4	0.0	Light grayish yellow green	None	>100	21.9	2	0.9	<0.58	<0.59		
					2019/8/21	Cloudy	26.5	0.3	19.2	0.0	Light grayish yellow green	None	>100	15.5	5	1.6	<0.90	<0.80		
					2019/11/26	Sunny	6.4	0.3	9.4	0.0	Light grayish yellow green	None	>100	16.7	5	1.5	<0.80	<0.71		
	13	Yunohara		Nasushiobara City	2020/2/4	Cloudy	3.3	0.3	6.3	0.0	Light grayish yellow green	None	>100	21.2	1	0.6	<0.57	<0.70		
					2019/5/27	Sunny	28.2	0.2	15.3	0.0	Light grayish yellow green	None	>100	18.5	3	3.0	<0.70	<0.67		
					2019/8/21	Cloudy	25.4	0.2	18.4	0.0	Light grayish greenish yellow	None	>100	58	14	10	4.7	<0.88	<0.85	
					2019/11/26	Sunny	7.4	0.5	9.9	0.0	Light grayish yellow green	None	>100	16.0	3	1.4	<0.79	<0.61		
					2020/2/3	Sunny	10.9	0.4	6.7	0.0	Light grayish yellow green	None	>100	20.0	3	1.8	<0.80	<0.70		
					2019/5/4	Sunny	24.9	0.3	19.0	0.0	Light grayish yellow green	None	>100	70	20	10	<0.81	<0.82		
14	Sekiba Bridge		Nasushiobara City	2019/8/3	Sunny	28.0	0.3	21.8	0.0	Light grayish yellow green	None	>100	17.0	6	0.9	<0.73	<0.74			
				2019/11/2	Sunny	11.1	0.2	12.8	0.0	Light grayish yellow green	None	>100	15.0	2	0.4	<0.42	<0.61			
				2020/2/7	Sunny	-3.3	0.2	3.0	0.0	Light grayish yellow green	None	>100	19.0	4	1.4	<0.52	<0.92			
				2019/5/4	Sunny	24.4	0.4	19.4	0.0	Grayish yellow green	None	>100	18.6	3	2.0	<0.75	<0.86			
				2019/6/6	Sunny	30.4	0.2	23.3	0.0	Light grayish yellow green	None	>100	18.2	13	6.4	<0.72	<0.80			
				2019/7/1	Cloudy	23.7	0.3	18.6	0.0	Light grayish yellow green	None	>100	15.7	11	5.1	<0.72	<0.74			
15	Hokigawa River	Iwai Bridge	Otawara City	2019/8/3	Sunny	33.4	0.3	22.3	0.0	Light grayish yellow green	None	>100	16.4	4	1.5	<0.75	<0.85			
				2019/9/10	Sunny	34.1	0.2	24.5	0.0	Light grayish yellow green	None	>100	16.4	3	0.8	<0.92	<0.80			
				2019/11/2	Sunny	18.6	0.3	17.0	0.0	Light grayish yellow green	None	>100	15.9	3	0.6	<0.53	<0.75			
				2020/2/7	Sunny	3.1	0.2	9.7	0.0	Light grayish yellow green	None	>100	17.7	2	0.9	<0.90	<0.55			
				2019/5/4	Sunny	22.0	0.3	19.7	0.0	Light grayish yellow green	None	>100	18.1	3	2.0	<0.70	<0.85			
				2019/6/6	Sunny	31.3	0.2	22.9	0.0	Light grayish yellow green	None	>100	18.0	15	5.8	<0.64	<0.80			
16	Hokigawa Bridge		Otawara City	2019/7/1	Cloudy	23.3	0.3	18.5	0.0	Light grayish yellow green	None	>100	13.9	9	4.2	<0.72	<0.85			
				2019/8/3	Sunny	33.8	0.3	28.5	0.0	Light grayish yellow green	None	>100	18.4	1	0.7	<0.79	<0.59			
				2019/9/10	Sunny	36.0	0.2	24.3	0.0	Light grayish yellow green	None	>100	15.0	4	1.6	<0.74	<0.85			
				2019/11/9	Sunny	12.6	0.3	14.3	0.0	Light grayish yellow green	None	>100	16.6	5	2.1	<0.83	<0.54			
				2020/2/7	Sunny	4.4	0.2	8.6	0.0	Light grayish yellow green	None	>100	21.6	<1	0.2	<0.52	<0.86			
				2019/5/4	Sunny	20.7	0.6	15.7	0.0	Light grayish greenish yellow	None	>100	14.3	3	2.1	<0.77	<0.90			
17	Nakagawa River	Shimaka Bridge	Nakagawa Town	2019/6/6	Sunny	32.2	0.2	25.8	0.0	Light grayish greenish yellow	None	>100	14.8	14	5.6	<0.90	<0.89			
				2019/7/1	Cloudy	24.2	0.2	17.5	0.0	Light grayish greenish yellow	None	>100	8.3	8	4.6	<0.65	<0.74			
				2019/8/3	Sunny	34.5	0.3	24.5	0.0	Light grayish greenish yellow	None	>100	11.3	4	1.3	<0.75	<0.94			
				2019/9/10	Sunny	33.9	0.2	22.8	0.0	Light grayish greenish yellow	None	>100	9.8	7	2.2	<0.82	<0.94			
				2019/11/9	Sunny	14.8	0.3	12.2	0.0	Light grayish greenish yellow	None	>100	10.3	5	1.7	<0.71	<0.78			
				2020/2/7	Sunny	6.6	0.2	4.9	0.0	Light grayish greenish yellow	None	>100	12.5	<1	0.4	<0.85	<0.70			
18	Mumogawa River	Kosei Bridge	Nakagawa Town	2019/5/4	Sunny	20.7	0.6	15.7	0.0	Light grayish greenish yellow	None	>100	14.3	3	2.1	<0.77	<0.90			
				2019/6/6	Sunny	32.2	0.2	25.8	0.0	Light grayish greenish yellow	None	>100	14.8	14	5.6	<0.90	<0.89			
				2019/7/1	Cloudy	24.2	0.2	17.5	0.0	Light grayish greenish yellow	None	>100	8.3	8	4.6	<0.65	<0.74			
				2019/8/3	Sunny	34.5	0.3	24.5	0.0	Light grayish greenish yellow	None	>100	11.3	4	1.3	<0.75	<0.94			
				2019/9/10	Sunny	33.9	0.2	22.8	0.0	Light grayish greenish yellow	None	>100	9.8	7	2.2	<0.82	<0.94			
				2019/11/9	Sunny	14.8	0.3	12.2	0.0	Light grayish greenish yellow	None	>100	10.3	5	1.7	<0.71	<0.78			

Tochigi River (Water)3/6

No.	Location			Sampling Date	Weather	Air temperature (°C)	Water depth (m)	Water										Remarks	
	Water area	Location	Municipality					General items					Activity concentration(Bq/L)						
								Water temperature (°C)	Sampling depth (m)	Color	Odor	Transparency (cm)	Electrical conductivity (mS/m)	SS (mg/L)	Turbidity (FNU)	Radioactive cesium			
														Cs-134	Cs-137				
R i v e r s	19	Arakawa River	Saikachi Bridge	Shioya Town	2019/5/27	Sunny	33.5	0.2	20.9	0.0	Light grayish greenish yellow	None	>100	6.3	3	2.3	<-0.86	<-0.80	
					2019/8/6	Sunny	31.1	0.3	24.2	0.0	Light grayish greenish yellow	None	>100	6.6	2	1.4	<-0.85	<-0.55	
					2019/11/26	Sunny	8.3	0.5	12.1	0.0	Light grayish greenish yellow	None	>100	6.8	2	1.1	<-0.87	<-0.54	
					2020/2/3	Sunny	12.3	2.0	10.9	0.0	Light grayish greenish yellow	None	>100	6.9	3	2.0	<-0.71	<-0.74	
			20	Renjo Bridge	Sakura City	2019/5/5	Sunny	22.6	0.4	16.3	0.0	Light grayish yellow green	None	>100	14.3	3	1.3	<-0.72	<-0.90
						2019/8/3	Sunny	35.7	0.6	24.9	0.0	Light grayish greenish yellow	None	>100	10.6	3	1.5	<-0.78	<-0.90
						2019/11/9	Sunny	8.8	0.3	14.2	0.0	Light grayish greenish yellow	None	>100	12.2	3	1.3	<-0.83	<-0.75
						2020/2/6	Sunny	2.6	0.2	5.7	0.0	Light grayish greenish yellow	None	>100	12.3	3	1.5	<-0.73	<-0.80
			21	Tanaka Bridge	Yaita City	2019/5/27	Sunny	34.7	0.2	22.2	0.0	Light grayish greenish yellow	None	>100	14.4	2	1.3	<-0.79	<-0.80
						2019/8/6	Sunny	32.0	0.2	26.4	0.0	Light grayish greenish yellow	None	>100	11.9	4	1.3	<-0.75	<-0.74
						2019/11/26	Sunny	7.8	0.2	12.2	0.0	Light grayish greenish yellow	None	>100	13.6	8	2.7	<-0.79	<-0.61
						2020/2/3	Sunny	11.4	0.3	11.1	0.0	Light grayish greenish yellow	None	>100	10.8	4	2.1	<-0.78	<-0.66
		22	Asahi Bridge	Sakura City	2019/5/5	Sunny	22.1	0.4	17.6	0.0	Light grayish greenish yellow	None	>100	17.7	5	3.6	<-0.77	<-0.88	
					2019/8/3	Sunny	35.1	0.3	27.2	0.0	Light grayish yellow green	None	>100	13.2	6	3.3	<-0.65	<-0.90	
					2019/11/9	Sunny	9.1	0.3	14.0	0.0	Light grayish yellow green	None	>100	14.3	4	1.8	<-0.80	<-0.66	
					2020/2/6	Sunny	1.7	0.2	6.8	0.0	Light grayish yellow green	None	>100	15.9	14	4.9	<-0.85	<-0.70	
		23	Arakawa River	Mukada Bridge	Nasu Karasuyama City	2019/5/5	Sunny	15.3	0.3	18.2	0.0	Light grayish yellow green	None	>100	19.0	6	3.4	<-0.62	<-0.85
						2019/6/6	Sunny	30.5	0.2	24.5	0.0	Light grayish yellow	None	>100	18.4	9	4.0	<-0.71	<-0.90
						2019/7/1	Cloudy	23.5	0.2	21.0	0.0	Light grayish yellow	None	>100	12.7	10	5.2	<-0.63	<-0.74
						2019/8/3	Sunny	37.0	0.2	29.2	0.0	Light grayish yellow	None	>100	13.4	9	2.5	<-0.68	<-0.93
						2019/9/12	Cloudy	26.2	0.4	23.6	0.0	Grayish greenish yellow	None	65	11.5	10	4.9	<-0.63	<-0.85
						2019/11/9	Sunny	15.4	0.3	14.9	0.0	Light grayish yellow green	None	>100	15.5	4	1.9	<-0.65	<-0.61
						2020/2/6	Sunny	4.1	0.2	7.2	0.0	Light grayish yellow	None	>100	17.5	5	2.4	<-0.75	<-0.92
						2019/5/5	Sunny	15.3	0.3	16.0	0.0	Grayish greenish yellow	None	52	18.6	20	8.9	<-0.83	<-0.90
	2019/6/6					Sunny	30.7	0.3	26.3	0.0	Light grayish greenish yellow	None	>100	19.2	10	4.6	<-0.84	<-0.85	
	2019/7/1					Cloudy	23.5	0.6	21.1	0.0	Light grayish greenish yellow	None	60	14.3	23	10	<-0.75	<-0.67	
	2019/8/3					Sunny	36.8	0.5	30.9	0.0	Light grayish greenish yellow	None	70	16.4	4	2.1	<-0.88	<-0.85	
	2019/9/12					Sunny	27.0	0.8	23.2	0.0	Dark grayish yellow	None	28	14.0	31	11	<-0.90	<-0.83	
	24	Egawa River	Tributary	Nasu Karasuyama City	2019/11/9	Sunny	15.2	0.5	13.8	0.0	Light grayish greenish yellow	None	>100	16.0	11	2.8	<-0.62	<-0.54	
					2020/2/6	Sunny	4.1	0.3	4.0	0.0	Light grayish greenish yellow	None	>100	17.8	24	5.9	<-0.59	<-0.55	
					2019/5/29	Cloudy	17.0	0.4	13.6	0.0	Light grayish yellow green	None	>100	7.6	2	1.9	<-0.61	<-0.66	
					2019/8/6	Sunny	32.2	0.3	19.0	0.0	Light grayish yellow green	None	>100	8.3	3	0.9	<-0.88	<-0.67	
	25	Kinugawa River	Kawaji Daiichi Power Station, front	Nikko City	2019/11/20	Rain	4.0	0.3	11.1	0.0	Grayish reddish yellow	None	22	7.8	97	95	<-0.85	<-0.82	
					2020/2/4	Sunny	6.3	0.3	7.4	0.0	Light grayish yellow	None	22	7.8	33	25	<-0.74	<-0.93	
					2019/5/29	Sunny	16.2	0.2	13.7	0.0	Light grayish yellow green	None	>100	8.4	<1	0.2	<-0.89	<-0.85	
					2019/8/6	Sunny	33.3	0.2	20.1	0.0	Light grayish yellow green	None	>100	7.6	<1	0.1	<-0.65	<-0.70	
					2019/11/20	Snow	2.0	0.2	7.5	0.0	Light grayish yellow green	None	>100	7.4	<1	0.2	<-0.64	<-0.61	
					2020/2/4	Sunny	3.2	0.2	4.5	0.0	Light grayish yellow green	None	>100	8.1	2	0.7	<-0.69	<-0.74	
					2019/5/29	Cloudy	16.8	0.4	11.3	0.0	Light grayish yellow green	None	>100	7.8	<1	0.6	<-0.61	<-0.55	
					2019/8/6	Sunny	31.8	0.4	19.1	0.0	Light grayish yellow green	None	>100	8.0	2	0.6	<-0.55	<-0.59	
					2019/11/20	Rain	4.0	0.5	11.7	0.0	Light grayish bluish green	None	92	8.4	2	1.0	<-0.54	<-0.74	
					2020/2/4	Sunny	6.2	0.5	5.1	0.0	Light grayish yellow green	None	>100	6.9	2	1.1	<-0.82	<-0.55	
					2019/5/22	Sunny	21.0	0.2	14.0	0.0	Light grayish yellow green	None	>100	6.4	4	2.0	<-0.77	<-0.85	
					26	Yunishi River	Maesawa Bridge	Nikko City	2019/8/6	Sunny	28.9	0.3	19.7	0.0	Light grayish yellow green	None	>100	7.1	3
	2019/11/20	Sunny	10.0	0.2					11.0	0.0	Light grayish yellow green	None	52	7.1	5	3.5	<-0.74	<-0.61	
	2020/2/4	Cloudy	7.3	0.2					6.2	0.0	Light grayish yellow green	None	42	8.1	4	3.9	<-0.83	<-0.55	
	2020/2/4	Cloudy	7.3	0.2					6.2	0.0	Light grayish yellow green	None	42	8.1	4	3.9	<-0.83	<-0.55	
	27	Ojika River	Tributary	Nikko City	2019/5/22	Sunny	21.0	0.2	14.0	0.0	Light grayish yellow green	None	>100	6.4	4	2.0	<-0.77	<-0.85	
2019/8/6					Sunny	28.9	0.3	19.7	0.0	Light grayish yellow green	None	>100	7.1	3	0.8	<-0.75	<-0.85		
2019/11/20					Sunny	10.0	0.2	11.0	0.0	Light grayish yellow green	None	52	7.1	5	3.5	<-0.74	<-0.61		
2020/2/4					Cloudy	7.3	0.2	6.2	0.0	Light grayish yellow green	None	42	8.1	4	3.9	<-0.83	<-0.55		
28	Kinugawa River	Kosagoe	Nikko City	2019/5/22	Sunny	21.0	0.2	14.0	0.0	Light grayish yellow green	None	>100	6.4	4	2.0	<-0.77	<-0.85		
				2019/8/6	Sunny	28.9	0.3	19.7	0.0	Light grayish yellow green	None	>100	7.1	3	0.8	<-0.75	<-0.85		
				2019/11/20	Sunny	10.0	0.2	11.0	0.0	Light grayish yellow green	None	52	7.1	5	3.5	<-0.74	<-0.61		
				2020/2/4	Cloudy	7.3	0.2	6.2	0.0	Light grayish yellow green	None	42	8.1	4	3.9	<-0.83	<-0.55		

Tochigi River (Water) 4/6

R i v e r s	Location				Sampling Date	Weather	Air temperature (°C)	Water depth (m)	Water										Remarks	
	No.	Water area		Municipality					General items					Activity concentration(Bq/L)						
		Water area	Location						Water temperature (°C)	Sampling depth (m)	Color	Odor	Transparency (cm)	Electrical conductivity (μS/m)	SS (mg/L)	Turbidity (FNU)	Radioactive cesium			
29	Tonegawa River System	Kinugawa River System	Itaana River	Tributary	Nikko City	2019/5/23	Sunny	26.0	0.3	17.3	0.0	Light grayish yellow green	None	>100	7.6	2	1.2	<0.85	<0.80	
						2019/6/10	Rain	16.1	0.2	14.7	0.0	Light grayish yellow green	None	>100	8.1	4	2.0	<0.94	<0.85	
						2019/7/12	Cloudy	18.6	0.2	15.4	0.0	Light grayish yellow green	None	>100	7.1	<1	0.6	<0.76	<0.89	
						2019/8/8	Rain	24.4	0.2	22.6	0.0	Light grayish yellow green	None	>100	7.5	3	1.1	<0.88	<0.70	
						2019/9/4	Cloudy	22.1	0.3	18.3	0.0	Light grayish yellow green	None	>100	7.3	2	0.6	<0.88	<0.67	
						2019/11/27	Cloudy	6.7	0.3	10.2	0.0	Light grayish yellow green	None	>100	6.7	<1	0.7	<0.87	<0.61	
						2020/2/18	Sunny	8.5	0.3	7.8	0.0	Light grayish yellow green	None	>100	7.2	<1	0.3	<0.69	<0.74	
						2019/5/23	Sunny	19.2	0.2	11.3	0.0	Grayish yellow green	None	>100	19.1	2	0.9	<0.80	<0.74	
						2019/8/8	Sunny	27.2	0.2	16.7	0.0	Grayish yellow green	None	>100	19.4	1	0.5	<0.69	<0.55	
						2019/11/22	Sunny	5.3	0.2	8.0	0.0	Light grayish yellow green	None	>100	18.1	4	2.5	<0.57	<0.71	
			30	Yukawa River	Tributary	Nikko City	2020/2/10	Sunny	-3.6	0.2	2.8	0.0	Grayish yellow green	None	>100	19.8	3	1.2	<0.84	<0.91
							2019/5/22	Cloudy	18.0	0.2	9.0	0.0	Light grayish yellow green	None	>100	11.1	1	0.4	<0.62	<0.90
							2019/8/26	Cloudy	25.1	0.3	14.9	0.0	Light grayish yellow green	None	>100	10.8	1	0.4	<0.76	<0.85
							2019/11/1	Sunny	17.3	0.2	10.7	0.0	Light grayish yellow green	None	>100	10.6	1	0.2	<0.79	<0.79
							2020/2/10	Sunny	3.4	0.2	6.1	0.0	Light grayish yellow green	None	>100	11.6	2	0.4	<0.85	<0.61
							2019/5/22	Cloudy	17.5	0.2	12.4	0.0	Light grayish yellow	None	>100	4.8	3	0.6	<0.69	<0.90
							2019/8/26	Cloudy	25.0	0.2	17.5	0.0	Light grayish yellow	None	>100	6.6	4	1.2	<0.85	<0.67
							2019/11/1	Sunny	16.1	0.2	12.3	0.0	Light grayish yellow	None	>100	8.3	1	0.3	<0.76	<0.74
							2020/2/10	Sunny	6.2	0.2	5.3	0.0	Light grayish yellow	None	>100	10.3	1	0.4	<0.61	<0.93
							2019/5/29	Sunny	24.4	0.2	18.4	0.0	Light grayish yellow green	None	>100	12.9	1	0.5	<0.67	<0.80
			31	Daiya River	Shinkyo Bridge	Nikko City	2019/6/10	Rain	16.2	0.2	12.4	0.0	Light grayish yellow green	None	>100	11.8	8	3.0	<0.86	<0.85
							2019/7/12	Cloudy	19.2	0.2	13.9	0.0	Light grayish yellow green	None	>100	11.5	8	3.6	<0.89	<0.74
							2019/8/8	Sunny	32.0	0.2	22.1	0.0	Light grayish yellow green	None	>100	11.9	2	0.5	<0.88	<0.74
							2019/9/5	Cloudy	23.4	0.2	15.0	0.0	Light grayish yellow green	None	>100	11.4	3	0.6	<0.76	<0.90
							2019/11/1	Sunny	22.0	0.3	14.3	0.0	Light grayish yellow green	None	>100	10.7	1	0.4	<0.84	<0.79
							2020/2/15	Sunny	10.0	0.3	7.7	0.0	Light grayish yellow green	None	>100	11.7	<1	0.2	<0.56	<0.85
							2019/5/27	Sunny	31.0	0.2	17.9	0.0	Light grayish greenish yellow	None	79	9.2	3	2.0	<0.84	<0.89
							2019/6/10	Rain	15.8	0.3	14.4	0.0	Light grayish greenish yellow	None	>100	9.8	9	3.9	<0.69	<0.85
							2019/7/12	Cloudy	20.4	0.2	16.0	0.0	Light grayish greenish yellow	None	>100	10.4	7	3.4	<0.76	<0.67
							2019/8/6	Sunny	34.4	0.3	24.1	0.0	Light grayish greenish yellow	None	>100	11.0	7	1.9	<0.80	<0.88
			32	Shidobuchi River	Sujigai Bridge	Nikko City	2019/9/5	Cloudy	23.4	0.2	16.1	0.0	Light grayish greenish yellow	None	>100	10.4	5	2.9	<0.84	<0.74
							2019/11/1	Sunny	22.0	0.3	16.1	0.0	Grayish greenish yellow	None	28	9.0	22	25	<0.61	<0.61
							2020/2/15	Sunny	13.3	0.1	8.3	0.0	Light grayish greenish yellow	None	>100	11.3	3	1.5	<0.68	<0.86
							2019/5/5	Sunny	24.2	0.7	14.3	0.0	Light grayish yellow green	None	>100	11.7	7	2.2	<0.86	<0.85
							2019/8/26	Cloudy	27.1	0.4	20.3	0.0	Light grayish yellow green	None	>100	10.6	5	2.0	<0.74	<0.80
							2019/11/26	Sunny	10.4	0.8	11.2	0.0	Light grayish yellow green	None	>100	9.5	5	2.1	<0.85	<0.48
							2020/2/6	Sunny	2.1	0.2	5.4	0.0	Grayish yellow green	None	>100	10.3	6	2.0	<0.68	<0.86
							2019/5/5	Sunny	23.9	0.7	16.2	0.0	Light grayish yellow green	None	>100	11.9	5	2.1	<0.89	<0.90
							2019/8/26	Cloudy	29.5	0.1	21.5	0.0	Light grayish yellow green	None	>100	10.7	5	1.9	<0.59	<0.85
							2019/11/26	Sunny	10.1	0.5	11.8	0.0	Light grayish greenish yellow	None	55	9.8	24	4.7	<0.59	<0.61
			33	Daiya River	Kaishin Bridge (Hariga)	Nikko City	2020/2/6	Sunny	2.8	0.2	5.6	0.0	Grayish bluish green	None	>100	10.7	14	3.3	<0.85	<0.78
							2019/5/11	Sunny	23.2	0.5	18.4	0.0	Light grayish yellow green	None	>100	19.6	3	1.5	<0.75	<0.85
							2019/8/5	Sunny	33.5	0.3	24.8	0.0	Light grayish yellow green	None	>100	15.6	2	0.6	<0.77	<0.74
							2019/11/16	Sunny	14.0	0.8	16.7	0.0	Light grayish yellow green	None	>100	19.3	2	0.8	<0.55	<0.70
			34	Kinugawa River	Sanuki	Shioya Town	2020/2/13	Cloudy	7.3	0.5	8.1	0.0	Light grayish yellow green	None	>100	15.0	16	2.3	<0.70	<0.86

Tochigi River (Water)5/6

No.	Location			Sampling Date	Weather	Air temperature (°C)	Water depth (m)	Water										Remarks			
	Water area	Location	Municipality					General items					Activity concentration(Bq/L)								
								Water temperature (°C)	Sampling depth (m)	Color	Odor	Transparency (cm)	Electrical conductivity (mS/m)	SS (mg/L)	Turbidity (FNU)	Radioactive cesium					
													Cs-134	Cs-137							
38	Egawa River	Tributary	Shimotsuke City	2019/5/11	Sunny	23.4	0.8	20.8	0.0	Light grayish greenish yellow	None	>100	19.7	2	1.4	<-0.87	<-0.85				
				2019/6/5	Cloudy	23.2	0.3	19.3	0.0	Light grayish greenish yellow	None	>100	17.4	2	0.7	<-0.63	<-0.66				
				2019/7/2	Cloudy	24.4	0.5	20.2	0.0	Light grayish greenish yellow	None	90	18.9	36	11	<-0.83	<-0.89				
				2019/8/5	Sunny	33.6	0.2	23.0	0.0	Light grayish greenish yellow	Faint sewage	>100	15.1	4	1.3	<-0.68	<-0.80				
				2019/9/3	Cloudy	25.4	0.3	22.8	0.0	Light grayish greenish yellow	None	47	19.9	37	13	<-0.73	<-0.90				
				2019/11/16	Sunny	13.8	0.3	13.7	0.0	Light grayish greenish yellow	None	>100	24.7	11	4.3	<-0.78	<-0.66				
				2020/2/13	Sunny	8.0	0.2	8.6	0.0	Light grayish greenish yellow	None	51	23.5	8	4.0	<-0.65	<-0.86				
				2019/5/22	Sunny	18.5	0.2	10.8	0.0	Light grayish greenish yellow	None	>100	10.2	5	1.3	<-0.85	<-0.90				
				2019/8/26	Cloudy	24.2	0.2	16.1	0.0	Light grayish greenish yellow	None	>100	10.8	4	1.1	<-0.66	<-0.85				
				2019/11/1	Sunny	14.4	0.3	11.3	0.0	Light grayish greenish yellow	None	>100	10.5	5	1.0	<-0.95	<-0.75				
39	Akabori River	Nikko City Hall, front	Nikko City	2020/2/15	Sunny	8.2	0.2	7.8	0.0	Light grayish greenish yellow	None	>100	11.4	<1	0.2	<-0.86	<-0.74				
				2019/5/22	Sunny	18.0	0.3	14.0	0.0	Light grayish greenish yellow	None	>100	12.4	5	1.5	<-0.65	<-0.74				
				2019/8/26	Cloudy	23.1	0.2	16.2	0.0	Light grayish greenish yellow	None	>100	14.5	4	1.1	<-0.70	<-0.89				
				2019/11/1	Sunny	11.9	0.2	13.4	0.0	Light grayish greenish yellow	None	>100	15.1	<1	0.2	<-0.67	<-0.48				
				2020/2/15	Sunny	5.6	0.2	10.0	0.0	Light grayish greenish yellow	None	>100	15.3	<1	0.2	<-0.73	<-0.80				
				40	Kiwadajima			2019/5/22	Sunny	24.5	0.3	19.2	0.0	Light grayish yellow	None	>100	13.0	6	2.4	<-0.69	<-0.90
								2019/6/10	Rain	16.0	0.2	16.8	0.0	Light grayish yellow	None	>100	13.6	6	1.8	<-0.82	<-0.48
2019/7/12	Cloudy	20.0	0.2					18.3	0.0	Light grayish yellow	None	>100	14.2	5	2.1	<-0.80	<-0.80				
2019/8/26	Cloudy	29.2	0.2					22.3	0.0	Light grayish yellow	None	>100	14.6	4	1.6	<-0.71	<-0.85				
2019/9/5	Cloudy	26.5	0.2					20.5	0.0	Light grayish yellow	None	>100	18.3	9	3.0	<-0.59	<-0.88				
2019/11/1	Sunny	23.6	0.2					17.7	0.0	Light grayish yellow	None	>100	14.9	8	4.9	<-0.81	<-0.54				
2020/2/15	Sunny	15.5	0.2					12.1	0.0	Light grayish yellow	None	>100	15.9	2	0.6	<-0.80	<-0.61				
41	Tagawa River	Ozobashi Bridge	Utsunomiya City	2019/5/22	Sunny	23.5	0.2	20.6	0.0	Light grayish yellow green	None	>100	17.5	9	2.0	<-0.85	<-0.74				
				2019/8/26	Cloudy	28.2	0.3	20.5	0.0	Light grayish yellow green	None	>100	19.3	4	1.1	<-0.55	<-0.90				
				2019/11/1	Sunny	23.5	0.2	18.1	0.0	Light grayish yellow green	None	>100	19.6	5	1.4	<-0.52	<-0.74				
				2020/2/15	Sunny	16.4	0.2	14.7	0.0	Light grayish yellow green	None	>100	20.6	<1	0.4	<-0.78	<-0.80				
				2019/5/11	Sunny	20.8	0.2	19.3	0.0	Light grayish yellow	None	>100	25.6	5	2.0	<-0.73	<-0.89				
				2019/8/5	Sunny	30.2	0.3	24.2	0.0	Light grayish yellow	None	>100	20.5	2	0.7	<-0.85	<-0.80				
				2019/11/16	Sunny	15.8	0.3	15.3	0.0	Light grayish yellow	None	>100	21.9	14	6.5	<-0.93	<-0.55				
42	Kamagawa River	Tsukushi Bridge		2020/2/13	Cloudy	8.8	0.2	10.7	0.0	Light grayish yellow	None	>100	26.3	2	0.7	<-0.71	<-0.61				
				2019/5/11	Sunny	26.3	0.2	22.3	0.0	Light grayish yellow	None	>100	23.5	8	4.0	<-0.75	<-0.74				
				2019/8/5	Sunny	34.8	0.2	26.5	0.0	Light grayish yellow	None	>100	21.7	5	1.4	<-0.65	<-0.74				
				2019/11/16	Sunny	12.8	0.5	13.7	0.0	Light grayish greenish yellow	None	>100	24.8	11	4.3	<-0.52	<-0.83				
				2020/2/13	Sunny	11.5	0.3	11.6	0.0	Light grayish yellow	None	>100	28.4	3	1.3	<-0.59	<-0.66				
				2019/5/11	Sunny	23.0	0.3	19.1	0.0	Light grayish yellow green	None	>100	12.7	3	1.0	<-0.55	<-0.67				
				2019/8/21	Cloudy	31.3	0.2	22.8	0.0	Light grayish yellow green	None	>100	8.1	2	0.8	<-0.76	<-0.89				
				2019/11/25	Cloudy	18.6	0.4	15.0	0.0	Light grayish yellowish green	None	>100	7.8	2	1.0	<-0.85	<-0.74				
				2020/2/15	Sunny	15.2	0.2	10.2	0.0	Grayish yellow	None	30	9.4	55	21	<-0.54	<-0.92				
				43	Meiji Bridge		Kaminokawa Town	2019/5/11	Sunny	28.0	0.3	22.4	0.0	Light grayish greenish yellow	None	>100	20.5	4	1.2	<-0.75	<-0.74
2019/8/5	Sunny	31.3	0.2					23.6	0.0	Light grayish greenish yellow	None	>100	12.7	2	0.7	<-0.65	<-0.90				
2019/11/25	Cloudy	16.2	0.3					15.0	0.0	Light grayish yellow green	None	>100	13.1	14	3.6	<-0.85	<-0.75				
2020/2/15	Sunny	7.2	0.1					11.8	0.0	Light grayish greenish yellow	None	>100	17.0	3	0.6	<-0.80	<-0.86				
2019/5/11	Sunny	22.5	0.2					18.8	0.0	Light grayish yellow green	None	>100	8.7	2	1.0	<-0.72	<-0.80				
2019/8/21	Cloudy	29.7	0.2					23.2	0.0	Light grayish yellow green	None	>100	6.3	1	0.6	<-0.90	<-0.89				
2019/11/25	Cloudy	18.5	0.5					14.1	0.0	Light grayish yellow green	None	>100	6.1	4	1.5	<-0.54	<-0.70				
44	Yanabashi Bridge		Oyama City	2020/2/15	Sunny	13.8	0.2	9.8	0.0	Light grayish yellow green	None	>100	6.9	11	2.7	<-0.85	<-0.66				
				2019/5/11	Sunny	23.0	0.2	19.9	0.0	Light grayish yellow	None	>100	18.3	4	2.5	<-0.70	<-0.67				
				2019/8/21	Cloudy	30.0	0.2	26.6	0.0	Light grayish yellow	None	>100	17.5	4	2.2	<-0.90	<-0.67				
				2019/11/25	Cloudy	18.1	0.2	15.9	0.0	Light grayish yellow green	None	>100	16.7	11	4.9	<-0.85	<-0.66				
				2020/2/15	Sunny	14.5	0.2	11.5	0.0	Light grayish yellow	None	>100	18.6	11	1.7	<-0.76	<-0.80				
				45	Kajima Bridge		Kanuma City	2019/5/11	Sunny	22.5	0.2	18.8	0.0	Light grayish yellow green	None	>100	8.7	2	1.0	<-0.72	<-0.80
								2019/8/21	Cloudy	29.7	0.2	23.2	0.0	Light grayish yellow green	None	>100	6.3	1	0.6	<-0.90	<-0.89
2019/11/25	Cloudy	18.5	0.5					14.1	0.0	Light grayish yellow green	None	>100	6.1	4	1.5	<-0.54	<-0.70				
2020/2/15	Sunny	13.8	0.2					9.8	0.0	Light grayish yellow green	None	>100	6.9	11	2.7	<-0.85	<-0.66				
2019/5/11	Sunny	23.0	0.2					19.9	0.0	Light grayish yellow	None	>100	18.3	4	2.5	<-0.70	<-0.67				
2019/8/21	Cloudy	30.0	0.2					26.6	0.0	Light grayish yellow	None	>100	17.5	4	2.2	<-0.90	<-0.67				
2019/11/25	Cloudy	18.1	0.2					15.9	0.0	Light grayish yellow green	None	>100	16.7	11	4.9	<-0.85	<-0.66				
46	Onari Bridge		Mibu Town	2020/2/15	Sunny	7.2	0.1	11.8	0.0	Light grayish greenish yellow	None	>100	17.0	3	0.6	<-0.80	<-0.86				
				2019/5/11	Sunny	22.5	0.2	18.8	0.0	Light grayish yellow green	None	>100	8.7	2	1.0	<-0.72	<-0.80				
				2019/8/21	Cloudy	29.7	0.2	23.2	0.0	Light grayish yellow green	None	>100	6.3	1	0.6	<-0.90	<-0.89				
				2019/11/25	Cloudy	18.5	0.5	14.1	0.0	Light grayish yellow green	None	>100	6.1	4	1.5	<-0.54	<-0.70				
				2020/2/15	Sunny	13.8	0.2	9.8	0.0	Light grayish yellow green	None	>100	6.9	11	2.7	<-0.85	<-0.66				
				2019/5/11	Sunny	23.0	0.2	19.9	0.0	Light grayish yellow	None	>100	18.3	4	2.5	<-0.70	<-0.67				
				2019/8/21	Cloudy	30.0	0.2	26.6	0.0	Light grayish yellow	None	>100	17.5	4	2.2	<-0.90	<-0.67				
47	Oashi River	Akaishi Bridge	Kanuma City	2019/5/11	Sunny	22.5	0.2	18.8	0.0	Light grayish yellow green	None	>100	8.7	2	1.0	<-0.72	<-0.80				
				2019/8/21	Cloudy	29.7	0.2	23.2	0.0	Light grayish yellow green	None	>100	6.3	1	0.6	<-0.90	<-0.89				
				2019/11/25	Cloudy	18.5	0.5	14.1	0.0	Light grayish yellow green	None	>100	6.1	4	1.5	<-0.54	<-0.70				
				2020/2/15	Sunny	13.8	0.2	9.8	0.0	Light grayish yellow green	None	>100	6.9	11	2.7	<-0.85	<-0.66				
				2019/5/11	Sunny	23.0	0.2	19.9	0.0	Light grayish yellow	None	>100	18.3	4	2.5	<-0.70	<-0.67				
				2019/8/21	Cloudy	30.0	0.2	26.6	0.0	Light grayish yellow	None	>100	17.5	4	2.2	<-0.90	<-0.67				
				2019/11/25	Cloudy	18.1	0.2	15.9	0.0	Light grayish yellow green	None	>100	16.7	11	4.9	<-0.85	<-0.66				
48	Koyabu River	Koyabu Bridge		2020/2/15	Sunny	14.5	0.2	11.5	0.0	Light grayish yellow	None	>100	18.6	11	1.7	<-0.76	<-0.80				

Tochigi River (Water)6/6

R i v e r s	Location				Sampling Date	Weather	Air temperature (°C)	Water depth (m)	Water										Remarks		
	No.	Water area		Location					Municipality	General items				Activity concentration(Bq/L)							
		Water area	Location							Water temperature (°C)	Sampling depth (m)	Color	Odor	Transparency (cm)	Electrical conductivity (μS/m)	SS (mg/L)	Turbidity (FNU)	Radioactive cesium Cs-134		Cs-137	
49	50	Tonegawa River System	Watarase River Area	Omoi River Area	Omoi River	Tamotsu Bridge	Tochigi City	2019/5/11	Sunny	27.0	0.2	19.3	0.0	Light grayish yellow green	None	>100	11.9	4	1.4	<-0.83	<-0.67
								2019/8/5	Sunny	32.0	0.2	23.2	0.0	Light grayish yellow green	None	>100	8.9	2	0.5	<-0.68	<-0.90
								2019/11/25	Cloudy	16.4	0.5	14.9	0.0	Light grayish yellow green	None	>100	8.9	3	1.7	<-0.56	<-0.66
						2020/2/15	Sunny	9.4	0.2	10.5	0.0	Light grayish yellow green	None	>100	11.6	<1	0.2	<-0.74	<-0.61		
						2019/5/11	Sunny	27.5	0.2	24.2	0.0	Grayish yellow green	None	>100	18.7	4	3.2	<-0.55	<-0.67		
						2019/6/5	Cloudy	24.5	0.3	21.6	0.0	Light grayish yellow green	None	>100	21.3	7	1.7	<-0.83	<-0.86		
					Omoe-ohashi Bridge	Oyama City	2019/7/2	Cloudy	24.0	0.5	19.7	0.0	Light grayish yellow green	None	90	13.2	15	8.3	<-0.88	<-0.85	
							2019/8/5	Sunny	36.4	0.3	27.7	0.0	Light grayish yellow green	None	68	13.9	27	4.0	<-0.68	<-0.88	
							2019/9/3	Cloudy	25.4	0.3	23.0	0.0	Light grayish yellow green	None	>100	15.4	11	4.8	<-0.89	<-0.85	
							2019/11/16	Sunny	9.8	0.4	13.3	0.0	Light grayish yellow green	None	>100	18.6	23	4.4	<-0.77	<-0.70	
							2020/2/13	Sunny	14.4	0.3	12.1	0.0	Light grayish yellow green	None	>100	19.9	3	0.8	<-0.57	<-0.93	
							2019/5/11	Sunny	28.7	0.7	24.8	0.0	Light grayish greenish yellow	None	50	30.7	17	8.0	<-0.70	<-0.85	
				Uzama River Area	Uzama River	Uzama Bridge	Tochigi City	2019/6/5	Cloudy	25.0	0.3	21.9	0.0	Light grayish greenish yellow	None	80	29.3	10	4.1	<-0.63	<-0.66
								2019/7/2	Cloudy	26.0	0.7	20.8	0.0	Light grayish greenish yellow	None	>100	20.2	24	12	<-0.79	<-0.88
								2019/8/5	Sunny	36.5	0.5	29.2	0.0	Light grayish greenish yellow	None	>100	23.1	6	1.7	<-0.71	<-0.85
								2019/9/3	Rain	24.3	0.5	23.3	0.0	Light grayish greenish yellow	None	>100	25.5	31	9.9	<-0.68	<-0.74
								2019/11/21	Sunny	15.2	0.6	15.8	0.0	Light grayish greenish yellow	None	78	27.1	22	5.7	<-0.74	<-0.66
								2020/2/13	Sunny	15.3	0.5	14.1	0.0	Light grayish greenish yellow	None	>100	29.9	5	1.5	<-0.83	<-0.74
						Watarase River intake weir at Sori Power Station	Nikko City	2019/5/7	Sunny	16.2	0.7	11.4	0.0	Grayish yellow green	None	>100	7.8	<1	0.3	<-0.96	<-0.80
								2019/6/13	Sunny	17.2	0.7	12.7	0.0	Grayish yellow green	None	>100	9.2	<1	0.2	<-0.73	<-0.74
								2019/7/9	Cloudy	16.4	0.2	14.3	0.0	Light grayish yellow green	None	>100	8.5	9	2.1	<-0.76	<-0.86
								2019/8/1	Cloudy	26.2	0.6	18.1	0.0	Light grayish yellow green	None	>100	9.1	1	0.3	<-0.65	<-0.90
								2019/9/4	Sunny	22.2	0.3	16.7	0.0	Light grayish yellow green	None	>100	9.6	2	1.0	<-0.73	<-0.80
								2019/11/22	Cloudy	6.4	0.2	7.6	0.0	Light grayish yellowish green	None	>100	16.2	<1	0.3	<-0.83	<-0.75
				Hajika Bridge	Ashikaga City	2020/2/10	Sunny	1.0	0.2	2.2	0.0	Light grayish yellow green	None	>100	14.9	<1	0.2	<-0.72	<-0.92		
						2019/5/17	Sunny	28.2	0.3	22.9	0.0	Light grayish yellow green	None	>100	14.3	2	0.9	<-0.75	<-0.85		
						2019/8/19	Sunny	33.0	0.4	22.9	0.0	Light grayish yellow green	None	85	8.9	9	2.6	<-0.90	<-0.80		
						2019/11/21	Sunny	12.2	0.2	11.7	0.0	Light grayish yellow green	None	>100	12.4	3	1.9	<-0.77	<-0.70		
						2020/2/14	Sunny	12.7	0.3	8.1	0.0	Light grayish yellow green	None	>100	14.4	<1	0.4	<-0.71	<-0.70		
						2019/5/17	Sunny	27.8	0.5	22.2	0.0	Light grayish greenish yellow	None	>100	16.1	4	1.4	<-0.82	<-0.67		
				Nakabashi Bridge	Tatebayashi City	2019/8/19	Sunny	31.0	0.7	21.2	0.0	Light grayish greenish yellow	None	85	10.1	7	2.0	<-0.82	<-0.90		
						2019/11/21	Sunny	15.4	0.2	12.2	0.0	Light grayish greenish yellow	None	>100	13.1	4	2.4	<-0.75	<-0.66		
						2020/2/14	Sunny	13.4	0.2	10.1	0.0	Light grayish greenish yellow	None	>100	15.6	1	0.4	<-0.61	<-0.92		
						2019/5/17	Sunny	25.3	0.8	22.2	0.0	Light grayish yellow green	None	52	20.4	2	2.3	<-0.90	<-0.80		
				Watarase-ohashi Bridge	Tochigi City	2019/8/19	Sunny	31.0	0.5	23.0	0.0	Grayish yellow green	None	37	10.0	25	7.6	<-0.52	<-0.88		
						2019/11/21	Sunny	16.4	0.2	12.0	0.0	Light grayish yellow green	None	>100	19.0	9	4.3	<-0.80	<-0.61		
						2020/2/14	Sunny	15.8	0.2	11.6	0.0	Light grayish yellow green	None	>100	22.4	4	1.4	<-0.55	<-0.70		
						2019/5/17	Sunny	24.8	0.2	22.6	0.0	Light grayish yellow green	None	>100	26.2	13	6.4	<-0.79	<-0.80		
				Shinkai Bridge	Tochigi City	2019/6/5	Cloudy	25.5	0.2	24.1	0.0	Light grayish yellow green	None	45	28.2	14	6.0	<-0.75	<-0.85		
						2019/7/2	Cloudy	27.5	0.5	20.0	0.0	Light grayish yellow green	None	53	15.7	30	13	<-0.66	<-0.80		
						2019/8/19	Sunny	30.0	0.5	23.3	0.0	Grayish yellow green	None	35	11.8	22	7.8	<-0.76	<-0.80		
						2019/9/3	Cloudy	24.4	0.2	24.3	0.0	Light grayish yellow green	None	>100	17.9	21	8.9	<-0.63	<-0.67		
						2019/11/21	Sunny	15.5	0.1	13.1	0.0	Light grayish yellow green	None	>100	23.3	14	5.8	<-0.68	<-0.47		
						2020/2/14	Cloudy	17.2	0.1	12.8	0.0	Light grayish yellow green	None	>100	24.2	10	2.2	<-0.78	<-0.92		

Tochigi River (Sediment) 1/6

No.	Location			Sampling Date	Weather	Air temperature (°C)	Water depth (m)	Sediment														Activity concentration [Bq/kg(dry)]			Remarks	
	Water area	Location	Municipality					General items														Radioactive cesium				
								Sediment temperature (°C)	Sample length (cm)	Color	Odeur	Grain size distribution(%)				Sediment content (%)			Density (g/cm ³)	Property	Cs-134	Cs-137	Total			
												Coarse gravel	Medium gravel	Fine gravel	Coarse sand	Medium sand	Fine sand	Silt						Clay		
R i v e r	Nakagawa River System	Nakagawa River	Itayobashichita	Nasuohibara City	2019/5/28	Cloudy	20.0	0.3	13.1	5	Dark olive	None	7.2	43.3	27.7	12.5	7.1	0.9	0.3	1.1	82.8	2.688	Gravel/sand	<5.2	9.7	9.7
					2019/8/15	Cloudy	25.2	0.3	18.5	5	Dark olive	None	1.4	37.1	23.9	19.7	13.6	2.4	0.4	1.5	74.7	2.619	Gravel/sand	<5.3	16	16
					2019/11/1	Sunny	13.9	0.3	11.1	5	Grayish olive	None	2.5	30.4	17.2	21.8	23.8	2.8	0.0	1.5	76.6	2.679	Sand/gravel	<3.8	9.3	9.3
					2020/2/3	Cloudy	7.0	0.3	7.4	5	Dark olive	None	0.0	47.2	23.6	20.3	7.2	0.4	0.3	0.8	77.5	2.674	Sand/gravel	<4.7	4.7	4.7
					2019/5/28	Cloudy	22.2	0.3	15.1	5	Brown	None	0.0	15.8	20.2	18.4	40.7	2.4	0.7	1.9	76.7	2.705	Sand/gravel	<5.6	20	20
		2019/8/15	Sunny	28.3	0.3	18.7	5	Brown	None	0.0	15.6	7.0	15.9	46.0	11.7	1.6	2.3	73.2	2.699	Sand	<5.0	39	39			
		2019/11/1	Sunny	16.1	0.5	11.6	7	Brownish gray	None	0.0	24.0	3.6	3.2	40.2	26.1	0.8	2.1	71.1	2.730	Sand/gravel	<4.4	19	19			
		2020/2/3	Cloudy	7.2	0.3	5.1	10	Grayish yellowish brown	None	0.0	3.7	12.4	19.3	37.3	37.3	5.6	0.1	1.6	73.4	2.713	Sand	<5.6	21	21		
		2019/5/28	Cloudy	22.5	0.2	14.5	5	Blackish brown	None	0.0	42.1	19.7	14.4	17.5	4.0	1.2	1.1	72.3	2.735	Gravel/sand	<4.4	38	38			
		2019/8/15	Sunny	28.8	0.2	20.5	5	Dark brown	None	1.0	39.2	23.8	15.9	15.0	3.0	0.4	1.7	77.8	2.805	Gravel/sand	<4.8	30	30			
	2019/11/1	Sunny	16.5	0.2	12.4	4	Dull yellowish brown	None	0.0	0.1	5.0	29.3	31.9	10.8	0.1	2.8	69.6	2.757	Sand/gravel	<5.8	25	25				
	2020/2/3	Sunny	7.6	0.3	7.2	5	Grayish yellowish brown	None	0.0	1.0	11.5	27.7	42.4	5.7	0.1	1.7	92.1	2.812	Sand	<5.7	22	22				
	2019/5/28	Cloudy	24.8	0.2	17.0	5	Dark brown	None	1.3	62.4	18.0	8.5	8.1	1.2	0.0	0.5	79.0	2.795	Gravel/sand	<5.9	15	15				
	2019/8/15	Sunny	28.8	0.1	20.2	5	Brown	None	0.0	2.4	14.6	39.3	33.9	6.3	0.7	2.8	64.3	2.570	Sand	<6.7	53	53				
	2019/11/1	Sunny	17.1	0.1	14.4	5	Brownish gray	None	0.0	13.9	18.7	20.3	34.9	10.4	0.0	1.9	74.6	3.040	Sand/gravel	<4.4	13	13				
	2020/2/3	Sunny	8.1	0.1	8.5	5	Blackish brown	None	0.0	6.6	18.0	35.7	32.4	5.0	0.1	2.2	69.8	2.705	Sand	<6.9	19	19				
	2019/5/7	Sunny	11.5	0.3	12.1	5	Olive brown	None	0.0	9.4	10.2	18.4	46.3	12.5	0.8	2.4	75.7	2.716	Sand	6.6	77	83.6				
	2019/6/6	Sunny	23.0	0.2	18.8	5	Olive brown	None	0.0	0.2	7.2	35.1	49.5	5.3	1.0	1.8	74.3	2.752	Sand	<5.5	30	30				
	2019/7/1	Cloudy	22.0	0.3	16.9	5	Olive brown	None	0.0	32.4	22.1	15.3	23.9	5.0	0.1	1.3	79.6	2.785	Sand/gravel	<4.3	19	19				
	2019/8/3	Sunny	30.3	0.2	19.2	5	Olive brown	None	0.0	7.5	28.2	43.7	18.3	0.5	0.7	1.2	79.1	2.696	Sand/gravel	<4.4	25	25				
2019/9/10	Sunny	26.1	0.4	21.1	5	Olive brown	None	0.0	9.4	35.6	23.2	20.3	9.4	0.0	2.2	78.1	2.709	Sand/gravel	<5.4	51	51					
2019/11/1	Sunny	21.0	0.3	15.9	5	Olive brown	None	0.0	55.8	12.8	8.6	11.9	9.4	0.3	1.2	79.9	2.757	Gravel/sand	<4.7	38	38					
2020/2/3	Cloudy	4.9	0.3	7.3	5	Olive brown	None	0.0	22.8	24.1	14.9	27.8	8.0	1.0	1.5	81.1	2.726	Sand/gravel	<5.0	21	21					
2019/5/7	Sunny	13.0	0.4	13.2	3	Blackish brown	None	0.0	81.6	7.8	2.4	1.5	0.1	0.1	0.5	82.3	2.717	Gravel	<3.9	14	14					
2019/8/3	Sunny	29.8	0.3	20.2	5	Blackish brown	None	0.0	29.2	23.9	22.7	20.9	1.6	0.5	1.3	82.3	2.839	Gravel/sand	<3.9	21	21					
2019/11/1	Sunny	19.7	0.3	15.5	5	Dark brown	None	0.0	13.8	8.0	15.5	49.7	10.9	0.8	1.4	77.3	2.971	Sand/gravel	<4.1	9.1	9.1					
2020/2/3	Cloudy	3.0	0.3	4.5	5	Blackish brown	None	0.0	2.7	4.9	17.6	58.5	12.7	1.0	2.6	74.8	2.780	Sand	<5.5	25	25					
2019/5/7	Sunny	14.2	0.5	14.2	3	Blackish brown	None	0.0	28.4	21.6	23.2	23.0	1.8	0.5	1.4	76.9	2.837	Sand/gravel	<4.6	33	33					
2019/8/3	Sunny	33.5	0.3	22.4	5	Dark brown	None	0.0	11.0	15.6	20.1	43.1	6.7	0.8	2.8	74.2	2.801	Gravel/sand	3.9	61	64.9					
2019/11/1	Sunny	21.2	0.4	16.2	5	Dull yellowish brown	None	4.7	17.3	14.7	21.7	24.7	5.1	0.0	1.8	76.1	2.920	Sand/gravel	<3.4	31	31					
2020/2/3	Cloudy	4.8	0.2	4.6	5	Dark brown	None	3.4	40.5	8.3	8.3	28.2	9.7	0.0	1.3	77.9	2.932	Sand/gravel	<3.4	26	26					
2019/5/7	Cloudy	14.5	0.3	14.7	6	Grayish olive	None	0.0	0.8	1.2	10.6	65.5	13.3	4.8	3.9	69.6	2.722	Sand	14	166	174					
2019/6/6	Sunny	27.6	0.2	21.0	5	Grayish olive	None	0.0	11.2	30.7	40.8	14.9	0.7	0.6	1.1	79.2	2.748	Gravel/sand	<5.0	37	37					
2019/7/1	Cloudy	23.2	0.3	18.9	5	Grayish olive	None	0.0	0.5	0.7	14.5	68.2	11.1	1.3	3.9	73.2	2.767	Sand	8.0	110	118.0					
2019/8/3	Sunny	33.3	0.2	20.7	5	Grayish olive	None	0.0	3.4	3.5	19.7	59.4	10.5	0.9	2.7	73.6	2.748	Sand	5.3	53	58.3					
2019/9/10	Sunny	30.9	0.4	21.2	4	Grayish olive	None	0.0	1.8	4.7	8.8	66.0	15.2	1.0	2.6	75.2	3.107	Sand	7.0	82	89.0					
2019/11/1	Sunny	21.5	0.3	16.2	5	Grayish olive	None	0.0	0.2	4.4	20.6	60.2	11.8	0.0	2.8	74.3	2.740	Sand	<5.5	21	21					
2020/2/3	Cloudy	4.4	0.1	4.6	5	Grayish olive	None	0.0	32.8	31.8	27.8	8.5	0.6	0.0	1.0	85.7	2.728	Sand/gravel	<3.8	32	32					
2019/5/7	Sunny	18.6	0.3	16.4	8	Grayish olive	None	0.0	25.4	23.3	24.1	23.4	1.8	0.6	1.5	79.8	2.681	Gravel/sand	<5.2	20	20					
2019/6/6	Sunny	28.2	0.3	21.1	5	Grayish olive	None	0.0	33.6	28.7	21.6	14.5	0.5	0.0	1.1	78.4	2.754	Gravel/sand	<4.7	16	16					
2019/7/1	Cloudy	24.4	0.3	19.5	5	Gray	None	0.0	2.9	9.1	21.3	55.7	7.7	0.0	3.4	75.9	2.724	Sand	<4.9	28	28					
2019/8/3	Sunny	36.0	0.2	21.6	5	Gray	None	0.0	2.8	4.3	23.7	63.3	3.3	0.1	2.6	79.1	2.835	Sand	<4.8	14	14					
2019/9/10	Sunny	32.2	0.2	25.6	6	Grayish olive	None	0.0	0.7	5.2	35.3	55.7	1.3	0.1	1.8	78.5	2.709	Sand	<3.7	24	24					
2019/11/2	Sunny	16.0	0.2	13.1	5	Gray	None	0.0	31.5	9.9	19.5	36.3	1.4	0.1	1.2	76.0	2.679	Sand/gravel	<5.3	17	17					
2020/2/3	Sunny	8.9	0.1	10.2	5	Gray	None	0.0	33.2	24.6	25.6	14.6	0.7	0.0	1.2	84.1	2.695	Sand/gravel	<4.3	14	14					

Tochigi River (Sediment) 2/6

No.	Location			Sampling Date	Weather	Air temperature (°C)	Water depth (m)	Sediment																	Remarks	
	Water area	Location	Municipality					Sediment temperature (°C)	Sample length (cm)	Color	Odeur	Grain size distribution(%)							Sediment content (%)	Density (g/cm ³)	Property	Activity concentration [Bq/kg(dry)]				
												Coarse gravel	Medium gravel	Fine gravel	Coarse sand	Medium sand	Fine sand	Silt				Clay	Cs-134	Cs-137		Total
												Coarse gravel	Medium gravel	Fine gravel	Coarse sand	Medium sand	Fine sand	Silt				Clay	Cs-134	Cs-137		Total
10	Manshu River	Tributary	Oiwara City	2019/5/7	Sunny	18.5	0.4	14.8	7	Grayish olive	None	0.0	32.0	30.2	25.3	10.7	0.4	0.4	1.1	87.5	2.714	Gravel/sand	<4.5	24	24	
				2019/6/6	Sunny	28.5	0.2	21.3	5	Olive black	None	0.0	26.5	26.5	25.0	20.2	0.5	0.5	0.9	81.8	2.674	Sand/gravel	<5.0	33	33	
				2019/7/1	Cloudy	24.3	0.3	18.1	5	Olive black	None	0.0	21.2	24.2	17.0	32.5	2.4	1.1	1.6	75.1	2.683	Gravel/sand	3.4	47	50.4	
				2019/8/3	Sunny	35.5	0.2	24.0	5	Olive black	None	0.0	35.1	31.2	19.1	12.2	0.9	0.3	0.7	83.3	2.695	Gravel/sand	<5.2	30	30	
				2019/9/10	Sunny	34.5	0.2	23.4	5	Grayish olive	None	0.0	26.9	30.2	33.6	16.4	1.5	0.3	1.0	77.0	2.671	Gravel/sand	<5.2	42	42	
	Subigawa River	Utagawa Bridge	Oiwara City	2019/1/2	Sunny	16.7	0.2	14.3	5	Olive black	None	0.0	35.9	26.3	17.6	16.7	2.4	0.4	0.8	78.1	2.680	Gravel/sand	<3.8	24	24	
				2020/2/3	Sunny	11.9	0.2	7.1	5	Olive black	None	0.0	0.1	0.7	5.9	71.7	16.7	0.0	4.9	57.9	2.669	Sand	<5.9	64	64	
				2019/5/4	Sunny	24.7	0.2	21.7	5	Grayish yellowish brown	None	0.6	43.8	9.9	5.2	20.2	11.5	0.8	1.9	78.2	2.702	Sand/gravel	<4.5	22	22	
				2019/8/3	Sunny	30.2	0.3	21.3	5	Dark olive	None	0.0	0.3	0.3	1.3	67.0	25.3	3.0	2.9	71.7	2.682	Sand	<5.1	26	26	
				2019/1/2	Sunny	13.4	0.3	16.3	5	Dark olive	None	0.0	0.0	0.1	0.4	9.8	61.5	21.1	7.2	74.2	2.676	Sand	<5.0	50	50	
Momura River	Momozanaka Bridge	Oiwara City	2020/2/7	Sunny	1.7	0.4	8.4	5	Olive brown	None	0.0	53.4	18.7	4.0	11.9	8.8	1.1	1.1	79.9	2.706	Gravel	<3.5	13	13		
			2019/5/4	Sunny	24.9	0.4	16.7	5	Grayish yellowish brown	None	4.5	40.3	29.7	18.6	5.5	0.4	0.0	1.0	84.6	2.691	Gravel/sand	<5.1	39	39		
			2019/8/3	Sunny	28.2	0.4	19.1	5	Yellowish brown	None	2.5	87.3	6.8	2.3	0.8	0.1	0.0	0.3	89.3	2.687	Gravel	<4.5	26	26		
			2019/1/2	Sunny	12.2	0.4	16.5	5	Dark grayish yellow	None	0.0	22.5	10.5	10.9	24.1	22.5	5.1	4.3	70.5	2.637	Sand/gravel	8.2	110	118.2		
			2020/2/7	Sunny	-2.5	0.2	12.4	5	Olive brown	None	0.0	0.8	5.1	9.7	52.4	26.4	1.5	4.1	71.5	2.744	Sand/gravel	<5.2	86	86		
13	Yanohara	Nasuhobara City	2019/5/27	Sunny	29.9	0.3	18.6	5	Olive brown	None	0.0	2.5	16.2	38.4	37.8	2.8	0.0	2.4	74.2	2.720	Sand	<4.9	74	74		
			2019/6/21	Cloudy	26.5	0.3	18.7	5	Olive brown	None	0.0	2.4	2.8	5.7	46.5	35.0	4.5	3.2	70.0	2.755	Sand	<4.6	25	25		
			2019/1/26	Sunny	6.4	0.3	9.7	5	Olive brown	None	0.0	0.0	0.4	5.9	78.3	12.3	0.2	3.0	68.6	2.731	Sand	<4.2	9.2	9.2		
			2020/2/4	Cloudy	3.3	0.3	6.1	5	Dark grayish yellow	None	0.0	1.8	6.1	11.9	59.4	16.3	0.5	4.0	71.2	2.790	Sand	<5.5	12	12		
			2019/5/27	Sunny	28.2	0.2	16.2	5	Dark olive	None	0.0	60.7	27.8	7.6	2.4	0.6	0.3	0.6	73.3	2.639	Gravel/sand	<5.6	41	41		
	Sekibu Bridge	Oiwara City	2019/8/21	Cloudy	25.4	0.2	17.2	5	Grayish olive	None	3.9	34.5	23.9	17.0	11.0	6.6	2.0	1.3	74.2	2.639	Gravel/sand	<5.3	49	49		
			2019/1/26	Sunny	7.4	0.5	10.2	5	Grayish olive	None	2.1	21.1	25.3	32.2	16.5	1.3	0.0	1.5	73.0	2.654	Gravel/sand	<4.3	42	42		
			2020/2/3	Sunny	10.9	0.4	7.1	5	Dark olive	None	0.0	4.9	11.6	26.4	41.1	11.0	1.8	3.3	73.6	2.639	Sand	<4.8	42	42		
			2019/5/4	Sunny	24.9	0.3	19.6	5	Grayish yellowish brown	None	2.4	10.2	13.2	35.6	35.1	1.5	0.8	1.4	74.1	2.878	Sand/gravel	<5.7	9.5	9.5		
			2019/8/3	Sunny	28.0	0.3	23.3	5	Olive brown	None	0.0	1.5	2.9	12.9	55.9	20.3	2.8	3.7	75.0	2.737	Sand	<4.5	15	15		
15	Hokigawa River	Iwai Bridge	Oiwara City	2019/1/2	Sunny	11.1	0.2	14.4	7	Olive brown	None	0.0	1.0	1.5	7.2	57.3	30.0	0.1	2.9	77.3	2.675	Sand	<4.7	23	23	
				2020/2/7	Sunny	-3.3	0.2	4.2	5	Olive brown	None	0.0	1.0	1.5	10.7	70.3	12.5	1.0	2.9	73.3	2.679	Sand	<4.9	14	14	
				2019/5/4	Sunny	24.4	0.4	20.2	5	Grayish yellowish brown	None	7.0	41.2	15.1	12.9	20.6	1.7	0.4	1.1	82.8	2.716	Sand/gravel	<4.5	6.0	6.0	
				2019/6/6	Sunny	30.4	0.2	23.7	5	Dark grayish yellow	None	0.0	1.4	0.7	8.7	70.2	16.1	0.1	2.8	75.9	2.848	Sand	<4.5	6.1	6.1	
				2019/7/1	Cloudy	23.7	0.3	18.9	5	Dark grayish yellow	None	0.0	0.0	0.0	8.9	83.9	12.5	1.3	2.0	73.5	2.699	Sand	<4.3	7.6	7.6	
	Hokigawa Bridge	Oiwara City	2019/8/3	Sunny	33.4	0.3	22.0	5	Dark grayish yellow	None	0.0	0.0	0.1	2.0	85.4	9.5	1.1	2.0	73.6	2.646	Sand	<4.4	9.2	9.2		
			2019/9/10	Sunny	34.1	0.2	25.0	4	Dark grayish yellow	None	0.0	0.0	0.0	1.8	76.8	18.4	0.7	2.3	71.4	2.662	Sand	<5.6	15	15		
			2019/1/2	Sunny	18.6	0.3	17.0	7	Yellowish brown	None	0.0	0.3	0.7	1.8	20.6	61.8	10.0	4.9	77.4	2.678	Sand	<5.7	28	28		
			2020/2/7	Sunny	3.1	0.2	8.6	5	Dark grayish yellow	None	0.0	0.0	0.6	8.1	75.4	12.0	0.6	3.3	73.1	2.672	Sand	<4.7	9.5	9.5		
			2019/5/4	Sunny	22.0	0.3	20.6	5	Grayish yellowish brown	None	1.8	50.2	28.4	14.2	4.4	0.3	0.2	0.6	81.7	2.690	Gravel/sand	<4.8	7.5	7.5		
17	Nakagawa River	Shimaka Bridge	Nakagawa Town	2019/6/6	Sunny	31.2	0.2	23.2	5	Olive brown	None	0.0	45.8	24.0	18.0	10.5	0.8	0.3	0.6	81.0	2.654	Gravel/sand	<4.2	6.3	6.3	
				2019/7/1	Cloudy	25.3	0.3	19.2	5	Dark grayish yellow	None	0.0	28.5	7.6	4.4	31.4	12.9	0.8	2.1	74.0	2.708	Sand/gravel	<5.4	9.7	9.7	
				2019/8/3	Sunny	33.8	0.3	28.6	5	Yellowish brown	None	7.9	53.7	0.7	0.5	19.0	16.0	0.8	1.5	69.3	2.663	Sand/gravel	<5.7	23	23	
				2019/9/10	Sunny	36.0	0.2	24.8	4	Yellowish gray	None	0.0	1.6	2.5	1.4	68.4	23.4	1.0	1.9	72.5	2.711	Sand	<5.0	15	15	
				2019/1/9	Sunny	12.6	0.3	13.8	5	Olive brown	None	0.0	60.9	26.9	6.1	3.4	2.1	0.2	0.5	92.8	2.650	Gravel/sand	<1.6	2.8	2.8	
	Munogawa River	Kosei Bridge	Nakagawa Town	2020/2/7	Sunny	4.4	0.2	8.1	5	Olive brown	None	0.0	63.9	27.6	2.7	2.7	2.5	0.3	0.3	84.5	2.629	Gravel	<4.6	6.0	6.0	
				2019/5/4	Sunny	20.7	0.6	16.3	5	Grayish yellowish brown	None	0.0	0.2	1.6	15.2	64.0	14.2	2.0	2.9	76.2	2.732	Sand	<4.7	11	11	
				2019/6/6	Sunny	32.2	0.2	25.8	5	Olive black	None	0.0	9.4	9.4	27.0	45.5	6.4	0.8	1.6	77.1	2.698	Sand	<6.2	8.9	8.9	
				2019/7/1	Cloudy	24.2	0.2	18.3	5	Olive black	None	0.0	0.3	1.3	6.2	46.3	22.2	2.0	2.9	76.9	2.760	Sand	<5.3	6.8	6.8	
				2019/8/3	Sunny	34.5	0.3	24.0	5	Olive black	None	0.0	1.9	6.6	19.1	59.5	10.1	1.0	1.8	73.7	2.723	Sand	<5.6	7.9	7.9	
18	Munogawa River	Kosei Bridge	Nakagawa Town	2019/9/10	Sunny	33.9	0.2	23.4	4	Olive black	None	0.0	0.0	0.2	2.2	75.2	17.2	1.2	3.9	74.7	2.691	Sand	<5.3	10	10	
				2019/1/9	Sunny	14.8	0.3	12.1	6	Gray	None	0.0	3.0	12.2	17.8	52.0	10.7	1.5	2.9	80.1	2.674	Sand	<4.6	6.5	6.5	
				2020/2/7	Sunny	6.6	0.2	6.2	5	Olive black	None	0.0	8.3	21.5	28.4	35.3	4.4	0.1	2.1	79.4	2.680	Sand	<4.7	6.2	6.2	

Tochigi River (Sediment) 3/6

No.	Location			Sampling Date	Weather	Air temperature (°C)	Water depth (m)	Sediment														Activity concentration [Bq/kg(dry)]			Remarks		
	Water area	Location	Municipality					Sediment temperature (°C)	Sample length (cm)	Color	Odeur	Grain size distribution(%)						Sediment content (%)	Density (g/cm ³)	Property	Radioactive cesium						
												Coarse gravel	Medium gravel	Fine gravel	Coarse sand	Medium sand	Fine sand				Silt	Clay	Cs-134	Cs-137		Total	
R i v e r s	Nakagawa River System	Anakawa River	Sakachi Bridge	Shiroya Town	2019/5/27	Sunny	33.5	0.2	21.0	5	Dark olive	None	0.0	52.7	44.8	2.1	0.2	0.0	0.0	0.2	82.9	2.661	Gravel	<5.1	17	17	
					2019/8/6	Sunny	31.1	0.3	24.2	5	Grayish olive	None	0.0	47.1	46.4	5.7	0.6	0.0	0.0	0.0	0.3	92.4	2.610	Gravel	<5.5	14	14
					2019/11/26	Sunny	8.3	0.5	12.7	5	Dark olive	None	0.0	10.0	25.1	47.0	12.0	1.9	1.4	2.6	73.8	2.636	Gravel/sand	<9.2	41	41	
			2020/2/2	Sunny	12.2	2.0	10.4	5	Grayish olive	None	0.0	11.8	14.1	38.8	30.2	3.0	0.5	1.7	77.6	2.644	Sand	<4.9	25	25			
			2019/5/5	Sunny	22.6	0.4	16.6	3	Grayish yellowish brown	None	0.0	16.8	5.6	8.3	24.5	11.8	0.8	2.2	78.2	2.761	Sand	<5.1	9.6	9.6			
			2019/8/3	Sunny	35.7	0.6	24.6	5	Olive brown	None	0.0	17.1	4.2	8.4	61.0	7.8	0.1	1.6	76.3	2.658	Sand	<4.3	8.4	8.4			
		2019/11/9	Sunny	8.8	0.3	14.3	5	Olive brown	None	0.0	0.3	5.7	25.2	57.1	7.9	1.0	2.7	78.5	2.648	Sand	<4.5	7.7	7.7				
		2020/2/6	Sunny	2.6	0.2	6.2	4	Olive brown	None	0.0	16.9	7.2	9.8	49.2	13.2	0.8	2.9	77.5	2.777	Sand/gravel	<4.6	7.8	7.8				
		2019/5/27	Sunny	34.7	0.2	22.0	5	Dull yellowish brown	None	0.0	42.5	37.4	16.4	3.1	0.1	0.0	0.6	82.8	2.729	Gravel/sand	<4.9	39	39				
		2019/8/6	Sunny	32.0	0.2	26.5	5	Dull yellowish brown	None	0.0	30.4	43.0	22.5	3.4	0.2	0.0	0.5	80.4	2.701	Gravel	<4.7	31	31				
		2019/11/26	Sunny	7.8	0.2	12.8	5	Dull yellowish brown	None	0.0	3.8	40.4	46.2	7.4	0.5	0.1	1.6	76.9	2.675	Sand	<6.8	27	27				
		2020/2/2	Sunny	11.4	0.3	11.9	5	Blackish brown	None	0.0	3.4	37.1	41.8	12.9	2.4	0.5	2.0	76.8	2.678	Sand	<4.6	32	32				
	2019/5/5	Sunny	22.1	0.4	18.4	3	Dull yellowish brown	None	0.3	33.7	21.9	26.7	15.4	0.6	0.1	1.3	78.7	2.698	Sand/gravel	<4.9	28	28					
	2019/8/3	Sunny	35.1	0.3	27.0	5	Yellowish brown	None	3.1	29.3	11.7	17.0	33.1	4.1	0.0	1.6	77.4	2.695	Sand/gravel	<5.2	31	31					
	2019/11/9	Sunny	9.1	0.3	14.1	6	Olive brown	None	2.1	34.8	17.6	15.9	24.0	4.3	0.3	1.1	78.4	2.666	Gravel/sand	<4.1	13	13					
	2020/2/6	Sunny	1.7	0.2	7.0	5	Olive brown	None	0.0	25.0	14.4	15.9	31.6	9.4	1.3	2.4	78.2	2.777	Sand/gravel	<4.7	22	22					
	2019/5/5	Sunny	15.2	0.3	18.6	3	Grayish yellowish brown	None	2.9	47.7	23.2	10.0	13.1	2.1	0.3	0.8	76.7	2.706	Gravel/sand	<4.0	14	14					
	2019/8/6	Sunny	30.5	0.2	25.1	5	Brown	None	0.0	25.3	11.8	11.1	46.7	3.2	0.1	1.9	60.0	2.664	Sand/gravel	<6.5	16	16					
	2019/7/1	Cloudy	23.5	0.2	21.3	5	Brown	None	0.0	0.0	0.6	3.2	67.7	23.4	2.0	2.9	70.3	2.668	Sand	<5.1	11	11					
	2019/8/3	Sunny	37.0	0.2	27.7	5	Brown	None	0.0	12.0	7.1	7.7	55.8	13.5	0.9	3.1	75.8	2.707	Sand	<4.8	12	12					
	2019/9/12	Cloudy	26.2	0.4	24.2	6	Brown	None	2.7	23.0	10.0	7.2	21.9	24.3	4.7	6.3	79.7	2.703	Sand/silt	<5.3	5.7	5.7					
	2019/11/9	Sunny	15.4	0.3	15.0	5	Brown	None	1.6	41.3	27.5	12.1	11.1	5.2	0.2	1.0	80.4	2.704	Gravel/sand	<3.8	6.5	6.5					
	2020/2/6	Sunny	4.1	0.2	8.1	5	Brown	None	0.0	36.1	7.6	4.6	15.4	29.9	3.3	3.0	71.5	2.672	Sand	<4.8	12	12					
	2019/5/5	Sunny	15.3	0.3	16.7	3	Grayish yellowish brown	None	0.0	18.4	7.5	9.4	45.7	15.4	0.8	2.9	77.7	2.710	Sand/gravel	<4.3	15	15					
2019/8/6	Sunny	30.7	0.3	26.5	5	Dark grayish yellow	None	2.7	46.5	26.2	14.2	8.9	0.8	0.0	0.7	76.3	2.739	Gravel	<7.0	12	12						
2019/7/1	Cloudy	23.5	0.4	21.3	5	Dark grayish yellow	None	0.0	29.6	25.9	21.2	18.5	3.5	0.1	1.3	81.9	2.728	Gravel/sand	<4.8	12	12						
2019/8/3	Sunny	36.8	0.5	29.9	5	Dark grayish yellow	None	0.0	24.1	27.5	24.5	20.1	1.5	1.4	0.9	84.6	2.736	Gravel/sand	<4.8	16	16						
2019/9/12	Sunny	27.0	0.8	24.4	7	Blackish brown	None	0.0	5.7	5.7	4.7	13.4	27.7	23.5	19.3	51.5	2.534	Silt	9.8	110	119.8						
2019/11/9	Sunny	15.2	0.5	14.0	6	Grayish olive	None	5.9	43.1	11.4	10.1	14.9	10.6	2.2	1.7	75.9	2.705	Sand/gravel	<5.1	28	28						
2020/2/6	Sunny	4.1	0.3	3.8	5	Blackish brown	None	0.0	43.1	24.5	14.9	12.7	2.5	0.8	1.7	81.9	2.704	Gravel/sand	<4.1	20	20						
2019/5/29	Cloudy	17.0	0.4	15.5	6	Gray	None	0.0	1.6	3.0	3.2	35.9	43.5	2.8	10.0	73.9	2.690	Sand	<6.6	45	45						
2019/8/6	Sunny	32.2	0.3	20.7	6	Gray	None	0.0	0.1	0.8	2.2	45.1	45.8	2.8	3.3	71.9	2.655	Sand	<7.0	48	48						
2019/11/20	Rain	4.0	0.3	10.8	5	Gray	None	3.4	9.1	16.1	30.6	34.9	3.2	1.4	1.4	77.8	2.770	Gravel/sand	<4.9	17	17						
2020/2/4	Sunny	6.3	0.3	7.7	4	Olive gray	None	0.0	4.3	30.8	48.5	14.2	0.2	0.0	1.9	84.6	2.672	Sand	<4.7	12	12						
2019/5/29	Sunny	16.2	0.2	14.4	5	Brownish gray	None	0.0	33.7	17.6	20.2	25.4	1.7	0.0	1.4	78.2	2.682	Sand/gravel	<3.1	4.2	4.2						
2019/8/6	Sunny	33.2	0.2	22.1	5	Brownish gray	None	0.0	4.1	14.2	24.1	39.7	4.7	1.3	1.9	75.6	2.649	Sand	<4.8	6.8	6.8						
2019/11/20	Snow	2.0	0.2	7.4	5	Brownish gray	None	0.0	31.6	15.6	23.3	28.7	1.2	0.5	1.0	74.6	2.640	Gravel/sand	<5.1	5.8	5.8						
2020/2/4	Sunny	3.2	0.2	4.8	5	Brownish gray	None	0.0	5.0	15.1	31.5	25.3	0.8	0.1	2.4	79.0	2.632	Sand	<4.4	5.0	5.0						
2019/5/29	Cloudy	16.8	0.4	12.6	6	Grayish olive	None	0.0	33.0	39.7	24.6	2.1	0.1	0.0	0.5	84.6	2.705	Gravel/sand	<2.7	3.8	3.8						
2019/8/6	Sunny	31.8	0.4	20.3	5	Olive	None	0.0	32.3	37.3	9.1	0.6	0.1	0.3	0.3	93.4	2.639	Gravel/sand	<3.7	3.8	3.8						
2019/11/20	Rain	4.0	0.5	11.7	5	Gray	None	0.0	47.3	36.9	14.2	1.0	0.1	0.0	0.5	92.5	2.637	Sand/gravel	<2.2	2.7	2.7						
2020/2/4	Sunny	6.2	0.5	6.8	5	Gray	None	0.0	28.3	32.4	23.6	14.3	0.3	0.0	1.2	79.2	2.666	Sand/gravel	<3.8	4.3	4.3						
2019/5/22	Sunny	21.0	0.2	12.8	5	Grayish yellowish brown	None	0.0	19.4	27.5	30.0	18.3	2.7	0.0	2.1	81.7	2.669	Sand/gravel	<5.7	15	15						
2019/8/6	Sunny	28.9	0.3	21.4	6	Dark olive	None	0.0	9.4	18.8	39.7	26.8	3.1	0.8	1.4	75.9	2.654	Sand/gravel	<5.5	23	23						
2019/11/20	Sunny	10.0	0.2	11.7	5	Brownish gray	None	0.0	7.5	22.6	33.9	27.8	5.4	1.4	1.4	78.4	2.679	Gravel/sand	<5.3	16	16						
2020/2/4	Cloudy	7.3	0.2	6.6	5	Dark grayish yellow	None	2.9	27.8	20.3	16.1	26.3	5.2	0.0	1.4	78.6	2.734	Sand/gravel	<7.0	23	23						

Tochigi River (Sediment) 4/6

No.	Location				Sampling Date	Weather	Air temperature (°C)	Water depth (m)	Sediment																	Remarks	
	Water area	Location	Municipality	General items													Activity concentration [Bq/kg(dry)]										
				Sediment temperature (°C)					Sample length (cm)	Color	Oder	Grain size distribution(%)					Sediment content (%)	Density (g/cm ³)	Property	Radioactive cesium							
												Coarse gravel	Medium gravel	Fine gravel	Coarse sand	Medium sand				Fine sand	Silt	Clay	Cs-134	Cs-137	Total		
R i v e r s	Tonogawa River System	Kingawa River System	Ihama River	Tributary	Nikko City	2019/5/23	Sunny	26.0	0.3	18.3	5	Olive brown	None	0.0	54.0	34.3	10.1	1.0	0.2	0.0	0.5	87.1	2.641	Gravel/sand	<5.2	1.4	14
						2019/6/10	Rain	16.1	0.2	14.8	5	Olive brown	None	1.3	62.8	20.0	13.0	2.4	0.1	0.0	0.5	86.4	2.796	Sand/gravel	<6.1	16	16
						2019/7/12	Cloudy	18.6	0.2	15.4	5	Olive brown	None	2.8	30.8	37.5	22.8	4.8	0.2	0.3	0.9	85.2	2.655	Gravel/sand	<4.8	21	21
						2019/8/8	Rain	24.4	0.2	22.9	5	Olive brown	None	0.0	41.2	29.4	18.7	8.6	0.7	0.5	1.0	75.3	2.851	Gravel/sand	<5.2	28	28
						2019/9/4	Cloudy	22.1	0.3	18.6	5	Olive brown	None	0.0	42.3	32.6	19.0	4.9	0.4	0.3	0.5	79.3	2.829	Gravel/sand	<3.9	19	19
						2019/11/27	Cloudy	6.7	0.3	10.3	3	Blackish brown	Faint fab	0.0	4.4	15.4	52.0	24.6	1.2	0.9	1.6	71.6	2.653	Sand/gravel	<6.5	24	24
						2020/2/18	Sunny	8.5	0.3	7.5	3	Blackish brown	Faint fab	0.0	2.0	3.9	40.4	49.5	1.3	0.2	2.7	73.5	2.677	Sand/gravel	<5.5	28	28
						2019/5/23	Sunny	19.2	0.2	12.3	6	Dull yellowish brown	None	0.0	6.0	7.8	17.8	57.6	8.3	0.1	2.5	76.6	2.801	Sand/gravel	<3.2	3.6	3.6
						2019/8/8	Sunny	27.2	0.2	16.5	5	Dull yellowish brown	None	0.0	0.6	8.7	30.8	50.8	6.0	0.1	3.5	74.0	2.773	Sand	<2.1	3.6	3.6
						2019/11/22	Sunny	5.3	0.2	9.0	5	Blackish brown	None	0.0	1.9	11.4	26.3	42.8	4.4	0.9	2.5	74.4	2.794	Sand	<2.9	4.4	4.4
			2020/2/10	Sunny	3.6	0.2	4.1	5	Blackish brown	None	0.0	5.0	23.6	32.4	31.8	4.4	1.1	1.6	75.9	2.798	Sand/gravel	<3.1	4.0	4.0			
			2019/5/22	Cloudy	18.0	0.2	9.8	5	Olive black	None	2.1	36.0	23.9	18.0	14.1	4.4	0.4	1.1	78.3	2.712	Gravel/sand	<5.8	5.8	5.8			
			2019/8/26	Cloudy	25.1	0.3	15.2	4	Olive black	None	0.0	8.0	24.2	30.9	24.5	9.5	0.9	2.0	78.1	2.712	Sand	<5.5	8.4	8.4			
			2019/11/1	Sunny	17.3	0.2	11.0	6	Olive black	None	0.0	15.5	23.4	22.3	34.1	2.9	0.1	1.8	78.0	2.700	Sand/gravel	<3.8	5.3	5.3			
			2020/2/10	Sunny	3.4	0.2	7.3	5	Olive black	None	0.0	21.5	26.8	16.6	27.8	4.9	0.5	2.0	76.4	2.724	Sand/gravel	<4.2	12	12			
			2019/5/22	Cloudy	17.5	0.2	12.7	5	Olive black	None	0.0	46.2	33.6	16.8	2.7	0.2	0.4	88.5	2.681	Gravel/sand	<5.9	7.0	7.0				
			2019/8/26	Cloudy	25.0	0.2	18.1	4	Olive black	None	0.0	49.9	32.4	12.2	2.9	1.3	0.5	1.0	84.2	2.655	Sand/gravel	6.4	68	74.4			
			2019/11/1	Sunny	16.1	0.2	12.5	6	Olive black	None	0.0	34.3	40.7	19.7	4.2	0.5	0.1	0.5	82.9	2.667	Sand/gravel	<5.3	5.5	5.5			
			2020/2/10	Sunny	6.2	0.2	8.3	5	Olive black	None	0.0	23.3	36.3	30.2	8.3	0.3	0.8	0.8	81.4	2.669	Sand/gravel	<5.2	5.7	5.7			
			2019/5/29	Sunny	24.4	0.2	18.5	5	Blackish brown	None	0.0	1.6	1.2	8.0	63.2	20.3	2.8	2.8	72.6	2.760	Sand	<4.8	5.9	5.9			
			2019/6/10	Rain	16.2	0.2	12.6	5	Dark brown	None	0.0	0.3	0.8	9.4	61.0	23.6	1.0	3.8	73.9	2.767	Sand	<6.7	7.1	7.1			
			2019/7/12	Cloudy	19.2	0.2	13.9	5	Dark brown	None	0.0	0.0	1.0	9.5	68.6	16.0	2.0	2.9	73.4	2.674	Sand	<5.5	7.1	7.1			
			2019/8/8	Sunny	32.0	0.2	22.4	5	Dark brown	None	0.0	0.3	1.9	19.2	62.0	12.8	1.0	2.9	72.4	2.695	Sand	<4.7	7.7	7.7			
			2019/8/8	Cloudy	23.4	0.2	14.8	5	Dark brown	None	0.0	0.1	0.4	8.3	82.6	8.6	0.1	2.0	72.8	2.861	Sand	<5.4	5.4	5.4			
			2019/11/1	Sunny	22.0	0.3	15.7	6	Dark brown	None	0.0	0.0	0.1	0.9	53.2	60.3	2.6	2.9	76.1	2.819	Sand	<3.2	5.0	5.0			
			2020/2/15	Sunny	10.0	0.3	8.0	5	Dark brown	None	0.0	10.2	12.2	12.7	44.7	17.2	0.5	2.5	78.1	2.881	Sand	<4.6	5.5	5.5			
			2019/5/27	Sunny	31.0	0.2	18.1	5	Dull yellowish brown	None	0.0	29.3	12.6	14.0	25.9	11.5	3.4	3.3	81.4	2.771	Sand/gravel	<4.4	7.2	7.2			
			2019/6/10	Rain	15.8	0.3	14.4	5	Dark brown	None	5.1	20.4	10.5	13.0	34.0	13.2	1.0	2.7	76.8	2.765	Sand/gravel	<5.4	8.1	8.1			
			2019/7/12	Cloudy	20.4	0.2	17.0	5	Dark brown	None	1.1	35.4	12.9	15.1	22.1	7.8	3.0	2.7	81.8	2.711	Gravel/sand	<4.4	14	14			
			2019/8/6	Sunny	34.4	0.3	24.0	5	Dark brown	None	0.0	27.4	20.9	21.3	21.6	5.3	2.0	1.5	79.0	2.722	Gravel	<4.3	8.6	8.6			
			2019/8/5	Cloudy	23.4	0.2	17.9	5	Dark brown	None	0.0	24.3	18.3	17.4	28.1	9.7	0.6	1.7	78.5	2.786	Sand/gravel	<4.2	8.6	8.6			
			2019/11/1	Sunny	22.0	0.3	16.3	5	Dark brown	None	0.0	0.0	0.0	0.8	58.8	27.9	9.2	3.4	72.0	2.716	Sand	<4.9	6.6	6.6			
			2020/2/15	Sunny	13.3	0.1	8.8	5	Blackish brown	None	0.0	0.4	2.7	14.4	67.5	10.5	2.4	2.2	76.3	2.807	Sand	<3.0	3.2	3.2			
			2019/5/5	Sunny	24.2	0.7	14.6	3	Grayish yellowish brown	None	9.0	46.4	5.3	8.1	23.8	5.1	1.0	1.3	78.8	2.725	Sand/gravel	<5.2	11	11			
			2019/8/26	Cloudy	27.1	0.4	21.1	5	Dark brown	None	0.0	1.7	2.4	6.2	30.3	32.7	15.5	11.4	64.7	2.662	Sand/silt	<6.4	47	47			
			2019/11/26	Sunny	10.4	0.8	12.1	5	Dark brown	None	0.0	1.5	1.4	4.3	18.2	45.6	18.9	10.3	68.6	2.672	Sand/silt	<9.7	39	39			
			2020/2/6	Sunny	2.1	0.2	5.5	3	Dark brown	None	0.0	0.3	0.7	1.6	25.6	25.4	11.2	5.3	74.0	2.788	Sand	<5.2	20	20			
			2019/5/5	Sunny	23.9	0.7	16.5	3	Brownish gray	None	8.3	36.0	18.5	14.5	17.7	3.7	0.4	1.1	80.8	2.774	Sand/gravel	<0.90	1.6	1.6			
			2019/8/26	Cloudy	29.5	0.1	21.9	5	Grayish yellowish brown	None	0.0	34.0	17.4	19.3	20.7	6.2	1.0	1.4	79.3	2.743	Gravel/sand	<2.6	3.5	3.5			
			2019/11/26	Sunny	10.1	0.5	12.4	5	Grayish yellowish brown	None	0.0	11.0	7.8	11.3	58.7	7.9	0.9	2.4	74.8	2.694	Sand/gravel	<7.3	12	12			
			2020/2/6	Sunny	2.8	0.2	6.7	5	Grayish yellowish brown	None	0.0	1.4	1.8	7.3	69.9	14.9	1.1	3.7	74.8	2.690	Sand	<3.3	6.7	6.7			
			2019/5/11	Sunny	23.2	0.5	19.0	5	Olive brown	None	0.0	44.7	16.2	6.1	23.7	7.4	0.5	1.5	80.0	2.704	Sand	<4.2	6.7	6.7			
			2019/8/5	Sunny	33.5	0.3	21.9	5	Olive brown	None	0.0	42.1	19.5	8.6	20.4	8.2	0.3	0.9	83.0	2.682	Gravel/sand	<4.9	4.7	4.7			
			2019/11/16	Sunny	14.0	0.8	17.3	6	Dark grayish yellow	None	0.0	0.4	0.2	5.1	60.5	17.4	3.4	4.4	75.5	2.674	Sand	<6.2	4.8	4.8			
			2020/2/13	Cloudy	7.3	0.4	7.9	5	Olive brown	None	0.0	0.2	0.8	1.6	22.6	60.6	9.0	5.3	70.1	2.719	Sand	<5.1	18	18			

Tochigi River (Sediment) 6/6

No.	Location				Sampling Date	Weather	Air temperature (°C)	Water depth (m)	Sediment														Remarks				
	Water area		Location	Municipality					General items																		
	River	System	Area	River					Bridge	City	Sediment temperature (°C)	Sample length (cm)	Color	Odeur	Grain size distribution(%)						Sediment content (%)	Density (g/cm ³)		Property	Activity concentration [Bq/kg(dry)]		
															Coarse gravel	Medium gravel	Fine gravel	Coarse sand	Medium sand	Fine sand					Silt	Clay	Cs-134
R i v e r s	Tongogawa River System	Omoi River Area	Omoi River	Tamotsu Bridge	Tochigi City	2019/5/11	Sunny	27.0	0.2	17.1	5	Dull yellowish brown	None	0.0	43.5	25.9	17.5	12.4	0.2	0.0	0.6	84.3	2.609	Gravel/sand	<0.51	2.1	2.1
						2019/8/5	Sunny	32.0	0.2	23.4	5	Dull yellowish brown	None	0.0	5.2	34.5	27.6	23.7	7.1	0.1	1.8	78.8	2.659	Sand/gravel	<3.1	6.7	6.7
						2019/11/25	Cloudy	16.4	0.5	15.8	5	Dull yellowish brown	None	0.0	19.8	12.1	12.9	46.2	6.9	0.1	2.0	77.7	2.637	Sand/gravel	<3.0	3.9	3.9
						2020/2/5	Sunny	9.4	0.2	10.1	5	Dull yellowish brown	None	0.0	0.0	0.8	9.9	79.2	7.0	0.1	2.9	75.0	2.664	Sand	<3.5	3.2	3.2
						2019/5/11	Sunny	27.5	0.2	24.5	5	Grayish yellowish brown	None	2.2	27.5	9.9	3.3	16.2	34.5	3.4	2.9	60.0	2.751	Sand/gravel	<6.3	8.7	8.7
				2019/6/5	Cloudy	24.5	0.3	22.0	5	Brown	None	6.7	36.0	19.0	9.9	21.4	5.9	0.0	1.1	86.0	2.841	Gravel/sand	<4.6	5.8	5.8		
				2019/7/2	Cloudy	24.0	0.5	20.2	5	Brown	None	0.0	0.0	0.2	0.0	3.7	79.9	11.8	4.4	70.2	2.696	Sand	<5.1	13	13		
				2019/8/5	Sunny	36.4	0.3	24.8	5	Grayish yellowish brown	None	0.0	2.6	10.3	5.3	10.3	60.8	5.2	3.2	70.7	2.696	Sand	<6.4	15	15		
				2019/9/3	Cloudy	25.4	0.3	22.2	5	Brown	None	12.4	2.9	0.8	0.4	3.2	56.0	18.8	5.5	71.5	2.677	Sand	<6.3	19	19		
				2019/11/16	Sunny	9.8	0.4	15.0	7	Olive brown	None	0.0	0.2	0.1	0.1	1.8	42.6	44.6	10.6	62.1	2.657	Silt	<7.1	38	38		
		2020/2/13	Sunny	14.4	0.3	11.0	5	Brown	None	2.8	48.1	17.5	6.6	8.9	13.3	1.6	1.2	91.9	2.764	Sand/gravel	<2.7	4.2	4.2				
		2019/5/11	Sunny	28.7	0.7	25.1	5	Brown	None	0.0	1.1	0.5	0.2	29.7	22.0	18.4	9.2	45.1	2.720	Silt	<1.6	1.8	1.8				
		2019/6/5	Cloudy	25.0	0.3	23.0	5	Dull yellowish brown	None	2.4	6.0	1.0	2.1	11.8	39.0	29.3	8.5	54.5	2.679	Silt	<4.4	25	25				
		2019/7/2	Cloudy	26.0	0.7	20.9	10	Dull yellowish brown	None	0.0	1.1	0.4	7.7	26.2	27.5	22.5	14.6	52.9	2.668	Silt	<5.6	12	12				
		2019/8/5	Sunny	36.5	0.5	27.2	5	Brown	None	0.0	2.4	0.5	6.3	23.4	31.1	26.1	10.1	49.8	2.633	Silt	<8.1	15	15				
		2019/9/3	Rain	24.3	0.5	23.7	5	Brown	None	6.6	2.6	1.1	7.6	22.9	18.9	31.6	8.8	53.3	2.669	Silt	<5.8	5.9	5.9				
		2019/11/21	Sunny	15.2	0.6	16.0	7	Dull yellowish brown	None	0.0	0.0	0.0	1.4	52.6	31.0	14.9	6.5	24.34	2.634	Silt	<7.1	37	37				
		2020/2/13	Sunny	15.3	0.5	13.8	5	Dull yellowish brown	None	0.0	0.0	1.2	1.2	3.9	43.1	31.6	10.0	58.1	2.580	Silt	<7.6	36	36				
		2019/5/7	Sunny	16.2	0.7	11.5	5	Grayish yellowish brown	None	0.0	36.3	27.5	16.8	14.8	3.0	0.4	1.1	77.8	2.711	Sand/gravel	<6.5	16	16				
		2019/6/13	Sunny	17.2	0.7	13.2	5	Brownish gray	None	0.0	19.2	26.4	20.3	27.2	5.3	0.0	1.6	77.9	2.689	Sand/gravel	<6.1	10	10				
		2019/7/9	Cloudy	16.4	0.2	14.7	5	Grayish olive	None	0.0	18.6	19.9	18.5	28.6	12.0	1.2	1.2	77.4	2.708	Sand/gravel	<5.1	18	18				
		2019/8/1	Cloudy	26.2	0.6	18.4	7	Grayish olive	None	0.0	17.4	19.3	20.0	32.4	9.0	0.0	1.9	77.7	2.681	Sand/gravel	<5.3	14	14				
		2019/9/4	Sunny	22.2	0.3	16.9	5	Olive black	None	0.0	2.5	3.8	18.4	56.4	14.3	1.9	2.7	73.8	2.672	Sand	<4.8	30	30				
		2019/11/22	Cloudy	6.4	0.3	7.9	5	Olive black	None	0.0	1.5	6.2	31.8	36.7	1.1	0.1	2.7	75.4	2.675	Sand	<6.7	13	13				
		2020/2/10	Sunny	1.0	0.2	4.1	5	Grayish olive	None	0.0	23.3	25.9	31.8	14.6	2.3	1.1	1.0	79.5	2.680	Sand/gravel	<5.4	8.6	8.6				
		2019/5/17	Sunny	28.2	0.3	22.5	5	Blackish brown	None	0.0	2.9	24.9	45.0	21.5	2.0	0.8	2.8	77.0	2.702	Sand	<5.3	6.2	6.2				
		2019/8/19	Sunny	33.0	0.4	23.0	5	Blackish brown	None	0.0	26.7	27.2	24.6	13.0	4.4	2.1	2.0	81.5	2.696	Gravel/sand	<5.0	13	13				
		2019/11/21	Sunny	12.2	0.2	11.8	5	Blackish brown	None	0.0	7.6	22.8	37.8	25.7	4.1	0.1	2.0	78.2	2.735	Sand/gravel	<3.3	3.9	3.9				
		2020/2/14	Sunny	12.7	0.3	9.4	5	Blackish brown	None	0.0	0.6	1.7	3.1	25.1	51.4	10.9	7.2	72.1	2.745	Sand	<4.3	29	29				
		2019/5/17	Sunny	27.8	0.5	21.8	5	Dark olive brown	None	2.8	55.5	14.0	9.6	14.1	3.0	0.0	1.0	80.9	2.666	Gravel/sand	<2.5	3.4	3.4				
		2019/8/19	Sunny	31.0	0.7	24.0	5	Dark olive brown	None	6.1	27.1	24.4	13.8	13.7	3.1	0.3	1.5	82.5	2.759	Gravel/sand	<4.1	8.5	8.5				
		2019/11/21	Sunny	15.4	0.2	12.7	5	Blackish brown	None	0.0	0.3	2.3	20.1	65.3	9.1	0.1	2.8	76.9	2.780	Sand	<2.9	3.8	3.8				
		2020/2/14	Sunny	13.4	0.2	10.9	5	Blackish brown	None	0.0	0.3	6.4	30.2	53.2	6.5	0.1	3.6	76.8	2.779	Sand	<5.0	7.4	7.4				
		2019/5/17	Sunny	25.3	0.8	20.3	6	Blackish brown	None	0.0	15.3	7.9	8.5	33.9	27.8	3.0	3.7	79.3	2.806	Sand/gravel	<4.0	12	12				
		2019/8/19	Sunny	31.0	0.5	24.7	5	Blackish brown	None	0.0	35.4	14.1	10.1	25.2	12.7	0.5	2.0	79.5	2.784	Sand/gravel	<4.8	5.1	5.1				
		2019/11/21	Sunny	16.4	0.2	12.6	5	Blackish brown	None	0.0	0.0	0.3	1.0	67.3	24.7	3.5	3.3	73.1	2.779	Sand	<5.4	14	14				
		2020/2/14	Sunny	15.8	0.2	12.4	5	Olive brown	None	0.0	31.4	27.6	14.8	19.1	5.6	0.4	1.2	80.6	2.741	Gravel/sand	<3.2	4.5	4.5				
		2019/5/17	Sunny	24.8	0.3	21.8	6	Blackish brown	None	0.0	24.6	9.2	14.4	40.3	10.0	0.7	1.9	80.2	2.828	Sand/gravel	<3.9	6.7	6.7				
		2019/6/5	Cloudy	25.5	0.2	25.2	5	Blackish brown	None	2.2	15.7	8.1	9.7	52.2	10.0	0.1	2.1	77.8	2.764	Sand/gravel	<5.2	11	11				
		2019/7/2	Cloudy	27.5	0.5	20.8	5	Blackish brown	None	0.0	43.6	14.4	6.8	11.7	1.9	2.0	4.3	76.1	2.819	Gravel/sand	<4.3	14	14				
		2019/8/19	Sunny	30.0	0.5	24.0	7	Blackish brown	None	0.0	0.0	0.1	0.1	0.6	31.3	45.2	22.8	58.5	2.658	Sand	9.3	100	109.3				
		2019/9/3	Cloudy	24.4	0.2	23.7	6	Blackish brown	None	0.0	0.9	3.3	7.3	50.9	31.9	1.6	4.2	74.9	2.698	Sand	<5.0	20	20				
		2019/11/21	Sunny	15.5	0.1	13.1	5	Blackish brown	None	0.0	36.6	26.4	12.8	17.6	4.0	1.2	1.4	80.0	2.792	Gravel/sand	<4.8	8.1	8.1				
		2020/2/14	Cloudy	17.2	0.1	13.7	5	Blackish brown	None	0.0	49.8	20.4	8.1	13.0	5.8	2.0	0.9	83.5	2.812	Gravel/sand	<3.3	11	11				

Tochigi River (Surrounding Environment) 2/6

Location				Sampling Date	Weather	Air temperature (°C)	Surrounding Environment (Soil, Air dose)										Remarks					
No.	Water area	Location	Municipality				Left bank					Right bank										
							Color	Odor	Property	Activity concentration [Bq/kg(dry)]			Air Dose (µSv/h)	Color	Odor	Property		Activity concentration [Bq/kg(dry)]			Air Dose (µSv/h)	
						Cs-134	Cs-137	Total				Cs-134	Cs-137	Total								
R i v e r s	Nakagawa River System	Matsuba River	Tributary	Otawara City	2019/5/7	Sunny	18.5	Dark olive brown	Faint earth	Loamy	31	390	421	0.07	Blackish brown	Faint earth	Loamy	22	280	302	0.07	
					2019/6/6	Sunny	28.5	Yellowish brown	Faint earth	Loamy	<6.1	66	66	0.07	Grayish yellowish brown	Faint earth	Loamy	57	780	837	0.07	
					2019/7/1	Cloudy	24.3	Olive brown	Faint earth	Loamy	49	630	679	0.07	Blackish brown	Faint earth	Loamy	52	730	782	0.09	
					2019/8/3	Sunny	35.5	Olive brown	None	Loamy	48	840	888	0.06	Dark brown	Faint earth	Loamy	26	300	326	0.08	
					2019/9/10	Sunny	34.5	Yellowish brown	Faint earth	Loamy	31	520	551	0.07	Blackish brown	Faint earth	Loamy	22	350	372	0.07	
		2019/11/2	Sunny		16.7	Olive brown	Faint earth	Loamy	65	1,100	1,165	0.06	Dark brown	Faint earth	Loamy	20	280	300	0.07			
		2020/2/3	Sunny		11.9	Olive brown	Faint earth	Loamy	21	350	371	0.07	Dark brown	Faint earth	Loamy	38	610	648	0.07			
		2019/5/4	Sunny		24.7	Grayish yellowish brown	None	Loamy	63	810	873	0.06	Blackish brown	None	Loamy	12	130	142	0.04			
		2019/8/3	Sunny		30.2	Dall yellowish brown	Faint earth	Loamy	26	300	326	0.05	Blackish brown	Faint earth	Loamy	11	180	191	0.04			
		2019/11/2	Sunny		13.4	Dall yellowish brown	Faint earth	Loamy	47	740	787	0.05	Blackish brown	Faint earth	Loamy	11	160	171	0.04			
	12	Momura River	Momurakata Bridge	Otawara City	2020/2/7	Sunny	1.7	Brown	Faint earth	Loamy	35	610	645	0.06	Dark brown	Faint earth	Loamy	9.7	130	139.7	0.04	
					2019/5/4	Sunny	24.9	Blackish brown	None	Loamy	160	2,100	2,260	0.07	Dall yellowish brown	None	Loamy	29	330	359	0.05	
					2019/8/3	Sunny	28.2	Grayish yellowish brown	Faint earth	Loamy	70	1,000	1,070	0.07	Dall yellowish brown	Faint earth	Loamy	23	380	403	0.06	
					2019/11/2	Sunny	12.2	Blackish brown	Faint earth	Loamy	87	1,400	1,487	0.07	Dark brown	Faint earth	Loamy	28	370	398	0.05	
					2020/2/7	Sunny	-2.5	Blackish brown	Faint earth	Loamy	66	1,100	1,166	0.07	Dark brown	Faint earth	Loamy	15	210	225	0.05	
	13	Yuzohara	Nasushiobara City	Nasushiobara City	2019/5/27	Sunny	29.9	Dall yellowish brown	Faint earth	Loamy	64	980	1,044	0.07	Dark brown	Faint earth	Loamy	97	1,100	1,197	0.04	
					2019/8/21	Cloudy	26.5	Blackish brown	Faint earth	Loamy	64	1,100	1,164	0.06	Blackish brown	Faint earth	Loamy	52	720	772	0.05	
					2019/11/26	Sunny	6.4	Dark brown	Faint earth	Loamy	41	670	711	0.06	Blackish brown	Faint earth	Loamy	63	1,000	1,063	0.07	
					2020/2/4	Cloudy	3.3	Grayish yellowish brown	Faint earth	Loamy	54	770	824	0.06	Dall yellowish brown	Faint earth	Loamy	150	2,300	2,450	0.06	
					2019/5/27	Sunny	28.2	Blackish brown	Faint earth	Loamy	150	1,900	2,050	0.12	Blackish brown	Faint earth	Loamy	64	820	884	0.14	
14	Sekiba Bridge	Nasushiobara City	Nasushiobara City	2019/8/21	Cloudy	25.4	Black	Faint earth	Loamy	50	680	730	0.09	Blackish brown	Faint earth	Loamy	120	1,800	1,920	0.15		
				2019/11/26	Sunny	7.4	Black	Faint earth	Loamy	92	1,500	1,592	0.11	Blackish brown	Faint earth	Loamy	110	1,700	1,810	0.14		
				2020/2/3	Sunny	10.9	Black	Faint earth	Loamy	100	1,500	1,600	0.12	Blackish brown	Faint earth	Loamy	280	4,500	4,780	0.14		
				2019/5/4	Sunny	24.9	Dall yellowish brown	None	Loamy	25	290	315	0.06	Dall yellowish brown	None	Loamy	26	320	346	0.05		
				2019/8/3	Sunny	28.0	Brown	Faint earth	Loamy	29	480	509	0.06	Dall yellowish brown	Faint earth	Loamy	51	730	781	0.06		
15	Hokigawa River	Iwai Bridge	Otawara City	2019/11/2	Sunny	11.1	Dall yellowish brown	Faint earth	Loamy	30	430	460	0.05	Blackish brown	Faint earth	Loamy	50	790	840	0.06		
				2020/2/7	Sunny	-3.3	Brown	Faint earth	Loamy	46	680	726	0.06	Dall yellowish brown	Faint earth	Loamy	32	480	512	0.05		
				2019/5/4	Sunny	24.4	Grayish yellowish brown	None	Loamy	24	310	334	0.07	Dall yellowish brown	None	Loamy	<11	86	86	0.05		
				2019/6/6	Sunny	30.4	Grayish yellowish brown	None	Loamy	150	2,100	2,250	0.07	Yellowish brown	Faint earth	Loamy	8.8	110	118.8	0.05		
				2019/7/1	Cloudy	23.7	Dall yellowish brown	Faint earth	Loamy	24	340	364	0.06	Light yellowish brown	Faint earth	Loamy	<7.6	150	150	0.05		
		16	Hokigawa Bridge	Otawara City	Otawara City	2019/8/3	Sunny	33.4	Dall yellowish brown	Faint earth	Loamy	150	2,200	2,350	0.06	Light yellowish brown	Faint earth	Loamy	10	150	160	0.05
						2019/9/10	Sunny	34.1	Dall yellowish brown	Faint earth	Loamy	40	520	560	0.05	Light yellowish brown	Faint earth	Loamy	<8.0	120	120	0.06
						2019/11/2	Sunny	18.6	Dark brown	Faint earth	Loamy	25	410	435	0.06	Yellowish brown	Faint earth	Loamy	9.4	130	139.4	0.05
						2020/2/7	Sunny	3.1	Dall yellowish brown	Faint earth	Loamy	12	200	212	0.07	Yellowish brown	Faint earth	Loamy	18	180	198	0.06
						2019/5/4	Sunny	22.0	Dall yellowish brown	None	Loamy	7.2	73	80.2	0.04	Dall yellowish brown	None	Loamy	11	120	131	0.05
17	Nakagawa River	Shimaka Bridge	Nakagawa Town	2019/6/6	Sunny	31.3	Dall yellow orange	None	Loamy	6.2	85	91.2	0.05	Dall yellow orange	None	Loamy	<7.0	64	64	0.05		
				2019/7/1	Cloudy	23.3	Brown	Faint earth	Loamy	<4.7	70	70	0.05	Dall yellowish brown	Faint earth	Loamy	6.9	100	106.9	0.05		
				2019/8/3	Sunny	33.8	Brown	Faint earth	Loamy	6.7	99	105.7	0.04	Dall yellowish brown	Faint earth	Loamy	8.1	120	128.1	0.05		
				2019/9/10	Sunny	36.0	Brown	Faint earth	Loamy	11	140	151	0.05	Dark brown	Faint earth	Loamy	<7.1	30	30	0.05		
				2019/11/9	Sunny	12.6	Brown	Faint earth	Loamy	<3.8	29	29	0.04	Dall yellowish brown	Faint earth	Loamy	<6.1	81	81	0.05		
	18	Mumogawa River	Kosei Bridge	Nakagawa Town	2020/2/7	Sunny	4.4	Brown	Faint earth	Loamy	<3.8	14	14	0.05	Dall yellowish brown	Faint earth	Loamy	<7.4	29	29	0.05	
					2019/5/4	Sunny	20.7	Blackish brown	None	Loamy	7.2	78	85.2	0.05	Blackish brown	None	Loamy	8.2	100	108.2	0.05	
					2019/6/6	Sunny	32.2	Grayish yellowish brown	None	Loamy	24	300	324	0.06	Grayish yellowish brown	None	Loamy	12	140	152	0.06	
					2019/7/1	Cloudy	24.2	Blackish brown	Faint earth	Loamy	13	150	163	0.06	Dark brown	Faint earth	Loamy	<5.6	70	70	0.05	
					2019/8/3	Sunny	34.5	Blackish brown	Faint earth	Loamy	13	130	143	0.06	Dark brown	Faint earth	Loamy	10	150	160	0.05	
2019/9/10	Sunny	33.9	Blackish brown	Faint earth	Loamy	<8.0	69	69	0.05	Blackish brown	Faint earth	Loamy	8.4	88	96.4	0.06						
2019/11/9	Sunny	14.8	Dark brown	Faint earth	Loamy	9.6	140	149.6	0.05	Dark brown	Faint earth	Loamy	10	150	160	0.05						
2020/2/7	Sunny	6.6	Grayish yellowish brown	Faint earth	Loamy	13	180	193	0.06	Dark brown	Faint earth	Loamy	<6.5	99	99	0.06						

Tochigi River (Surrounding Environment) 3/6

Location				Sampling Date	Weather	Air temperature (°C)	Surrounding Environment (Soil, Air dose)										Remarks					
No.	Water area	Location	Municipality				Left bank					Right bank										
							Color	Odor	Property	Activity concentration [Bq/kg(dry)]			Air Dose (µSv/h)	Color	Odor	Property		Activity concentration [Bq/kg(dry)]			Air Dose (µSv/h)	
			Radioactive cesium						Radioactive cesium													
			Cs-134	Cs-137	Total				Cs-134	Cs-137	Total											
R i v e r s	Nakagawa River System	Ankawa River	Saikachi Bridge	Shiyoa Town	2019/5/27	Sunny	33.5	Dull yellowish brown	Faint earth	Loamy	14	160	174	0.06	Brown	Faint earth	Loamy	58	650	708	0.06	
					2019/8/6	Sunny	31.1	Dull yellowish brown	Faint earth	Loamy	16	260	276	0.06	Dull yellowish brown	Faint earth	Loamy	66	740	806	0.06	
					2019/11/26	Sunny	8.3	Dark brown	Faint earth	Loamy	33	880	913	0.07	Dull yellowish brown	Faint earth	Loamy	38	990	1,028	0.06	
			2020/2/3	Sunny	12.3	Dark brown	Faint earth	Loamy	29	480	509	0.07	Dull yellowish brown	Faint earth	Loamy	63	1,100	1,163	0.07			
			2019/5/5	Sunny	22.6	Grayish yellowish brown	None	Loamy	27	330	357	0.06	Dull yellowish brown	None	Loamy	13	170	183	0.05			
			2019/8/3	Sunny	35.7	Brown	Faint earth	Loamy	19	270	289	0.05	Dull yellowish brown	Faint earth	Loamy	25	250	275	0.06			
		20	Ankawa River	Renjo Bridge	Sakara City	2019/11/9	Sunny	8.8	Brown	Faint earth	Loamy	24	340	364	0.06	Dull yellowish brown	Faint earth	Loamy	17	170	187	0.06
						2020/2/6	Sunny	2.6	Dark brown	Faint earth	Loamy	<7.9	120	120	0.06	Blackish brown	Faint earth	Loamy	<3.0	5.0	5.0	0.06
						2019/5/27	Sunny	34.7	Dull yellowish brown	None	Loamy	110	1,100	1,210	0.05	Dull yellowish brown	None	Loamy	39	570	609	0.06
						2019/8/6	Sunny	32.0	Dull yellowish brown	Faint earth	Loamy	18	300	318	0.05	Brown	Faint earth	Loamy	27	420	447	0.05
						2019/11/26	Sunny	7.8	Dark brown	Faint earth	Loamy	29	390	419	0.06	Dark brown	Faint earth	Loamy	29	590	619	0.06
						2020/2/3	Sunny	11.4	Dark brown	Faint earth	Loamy	82	1,300	1,382	0.07	Dark brown	Faint earth	Loamy	20	310	330	0.07
		22	Ankawa River	Asahi Bridge	Sakara City	2019/5/5	Sunny	22.1	Blackish brown	None	Loamy	38	440	478	0.05	Grayish yellowish brown	None	Loamy	32	390	422	0.05
						2019/8/3	Sunny	35.1	Blackish brown	Faint earth	Loamy	28	330	378	0.06	Dark brown	Faint earth	Loamy	25	360	385	0.06
						2019/11/9	Sunny	9.1	Blackish brown	Faint earth	Loamy	15	240	255	0.06	Blackish brown	Faint earth	Loamy	36	600	636	0.05
						2020/2/6	Sunny	1.7	Dull yellowish brown	Faint earth	Loamy	25	300	325	0.08	Blackish brown	Faint earth	Loamy	14	220	234	0.05
						2019/5/5	Sunny	15.3	Dull yellowish brown	None	Loamy	10	120	130	0.05	Brown	None	Loamy	10	120	130	0.05
						2019/8/6	Sunny	30.5	Dull yellowish brown	None	Loamy	29	240	269	0.06	Dull yellowish brown	Faint earth	Loamy	8.4	91	99.4	0.05
		23	Ankawa River	Mukada Bridge	Nasu Karasuyama City	2019/7/1	Cloudy	23.5	Dull yellowish brown	Faint earth	Loamy	16	190	206	0.05	Dark brown	Faint earth	Loamy	15	190	205	0.05
						2019/8/3	Sunny	37.0	Dull yellowish brown	Faint earth	Loamy	15	220	235	0.05	Brown	Faint earth	Loamy	<6.2	45	45	0.04
						2019/9/12	Cloudy	26.2	Dull yellowish brown	Faint earth	Loamy	<8.9	42	42	0.06	Dark brown	Faint earth	Loamy	9.4	98	107.4	0.05
						2019/11/9	Sunny	15.4	Dull yellowish brown	Faint earth	Loamy	20	280	300	0.05	Dark brown	Faint earth	Loamy	<6.3	83	83	0.04
						2020/2/6	Sunny	4.1	Brown	Faint earth	Loamy	<8.5	110	110	0.05	Brown	Faint earth	Loamy	8.6	130	138.6	0.05
						2019/5/5	Sunny	15.3	Grayish yellowish brown	None	Loamy	<6.3	30	30	0.05	Dull yellowish brown	None	Loamy	<3.6	3.0	3.0	0.05
24	Egawa River	Tributary	Nasu Karasuyama City	2019/8/6	Sunny	30.7	Dull yellowish brown	None	Loamy	<6.3	110	110	0.04	Dull yellowish brown	None	Loamy	<3.5	4.1	4.1	0.05		
				2019/7/1	Cloudy	23.5	Dull yellowish brown	Faint earth	Loamy	6.3	98	104.3	0.05	Brown	Faint earth	Loamy	<2.4	2.8	2.8	0.05		
				2019/8/3	Sunny	36.8	Brown	None	Loamy	11	120	131	0.04	Dull yellowish brown	None	Loamy	<3.6	4.2	4.2	0.04		
				2019/9/12	Sunny	27.0	Dull yellowish brown	Faint earth	Loamy	9.8	110	119.8	0.05	Brown	Faint earth	Loamy	<6.8	8.3	8.3	0.04		
				2019/11/9	Sunny	15.2	Dull yellowish brown	Faint earth	Loamy	9.1	110	119.1	0.05	Brown	Faint earth	Loamy	<6.4	6.2	6.2	0.04		
				2020/2/6	Sunny	4.1	Brown	Faint earth	Loamy	<7.8	100	100	0.06	Brown	Faint earth	Loamy	<6.4	27	27	0.04		
				2019/5/29	Cloudy	17.0	Dull yellowish brown	Faint earth	Loamy	70	980	1,050	0.09	Blackish brown	Faint earth	Loamy	63	800	863	0.08		
				2019/8/6	Sunny	32.2	Dull yellowish brown	Faint earth	Loamy	75	920	995	0.09	Blackish brown	Faint earth	Loamy	26	420	446	0.08		
				2019/11/20	Rain	4.0	Brown	Faint earth	Loamy	60	1,000	1,060	0.09	Grayish yellowish brown	Faint earth	Loamy	92	1,400	1,492	0.09		
				2020/2/4	Sunny	6.3	Grayish yellowish brown	Faint earth	Loamy	78	1,300	1,378	0.07	Blackish brown	Faint earth	Loamy	130	2,300	2,430	0.06		
26	Tonegawa River System	Kinugawa River	Kawaji Daiichi Power Station, front	Nikko City	2019/5/29	Sunny	16.2	Blackish brown	Faint earth	Loamy	11	160	171	0.07	Dark brown	Faint earth	Loamy	<9.3	110	110	0.04	
					2019/8/6	Sunny	33.3	Olive black	Faint earth	Loamy	28	370	398	0.06	Blackish brown	Faint earth	Loamy	<6.5	10	10	0.04	
					2019/11/20	Snow	2.0	Blackish brown	Faint earth	Loamy	<7.1	140	140	0.04	Blackish brown	Faint earth	Loamy	<8.0	27	27	0.05	
		2020/2/4	Sunny	3.2	Blackish brown	Faint earth	Loamy	12	210	222	0.07	Blackish brown	Faint earth	Loamy	<7.5	100	100	0.04				
		2019/5/29	Cloudy	16.8	Blackish brown	Faint earth	Loamy	120	1,700	1,820	0.11	Dull yellow	Faint earth	Sandy	<8.9	70	70	0.08				
		2019/8/6	Sunny	31.8	Blackish brown	Faint earth	Loamy	180	2,200	2,380	0.10	Grayish yellow	None	Sandy	33	470	503	0.09				
27	Kinugawa River	Ojika River	Tributary	Nikko City	2019/11/20	Rain	4.0	Blackish brown	Faint earth	Loamy	100	1,700	1,800	0.10	Grayish yellow	None	Sandy	<6.2	20	20	0.08	
					2020/2/4	Sunny	6.2	Dark grayish yellow	Faint earth	Loamy	72	1,200	1,272	0.07	Blackish brown	Faint earth	Loamy	<5.6	9.6	9.6	0.09	
					2019/5/22	Sunny	21.0	Dark brown	Faint earth	Loamy	140	1,800	1,940	0.10	Dark brown	Faint earth	Loamy	19	230	249	0.08	
					2019/8/6	Sunny	28.9	Dark brown	Faint earth	Loamy	88	1,100	1,188	0.11	Dull yellowish brown	Faint earth	Loamy	40	610	650	0.08	
28	Kinugawa River	Kougoe			2019/11/20	Sunny	10.0	Blackish brown	Faint earth	Loamy	85	1,500	1,585	0.09	Grayish yellowish brown	Faint earth	Loamy	<8.4	120	120	0.07	
					2020/2/4	Cloudy	7.3	Blackish brown	Faint earth	Loamy	110	1,800	1,910	0.09	Dull yellowish brown	Faint earth	Loamy	<8.2	82	82	0.07	

Tochigi River (Surrounding Environment) 4/6

Location					Sampling Date	Weather	Air temperature (°C)	Surrounding Environment (Soil, Air dose)										Remarks					
No.	Water area		Location	Municipality				Left bank					Right bank										
								Color	Odor	Property	Activity concentration [Bq/kg(dry)]			Air Dose (µSv/h)	Color	Odor	Property		Activity concentration [Bq/kg(dry)]			Air Dose (µSv/h)	
								Cs-134	Cs-137	Total		Cs-134	Cs-137		Total								
R i v e r s	Tonggwa River System	Kinugawa River System	Itana River	Tributary	Nikko City	2019/5/23	Sunny	26.0	Dull yellowish brown	Faint earth	Loamy	46	630	676	0.10	Grayish yellowish brown	Faint earth	Loamy	-8.0	50	50	0.08	
						2019/6/10	Rain	16.1	Blackish brown	Faint earth	Loamy	81	1,200	1,281	0.11	Dull yellowish brown	Faint earth	Loamy	15	190	205	0.07	
						2019/7/12	Cloudy	18.6	Dark brown	Faint earth	Loamy	54	790	844	0.10	Brown	Faint earth	Loamy	6.7	92	98.7	0.07	
						2019/8/8	Rain	24.4	Dark brown	Faint earth	Loamy	56	900	956	0.11	Brown	Faint earth	Loamy	13	140	153	0.09	
						2019/9/4	Cloudy	22.1	Dark brown	Faint earth	Loamy	71	920	991	0.10	Dull yellowish brown	Faint earth	Loamy	11	180	191	0.07	
						2019/11/27	Cloudy	6.7	Blackish brown	Faint earth	Loamy	62	1,200	1,262	0.14	Dark brown	Faint earth	Loamy	20	260	280	0.09	
						2020/2/18	Sunny	8.5	Blackish brown	Faint earth	Loamy	66	1,000	1,066	0.16	Dark brown	Faint earth	Loamy	15	250	265	0.10	
						2019/5/23	Sunny	19.2	Brown	Faint earth	Loamy	16	190	206	0.06	-	-	-	-	-	-	-	(Right bank)Unable to collect samples due to privately owned land
						2019/8/8	Sunny	27.2	Dark brown	Faint earth	Loamy	13	150	163	0.04	-	-	-	-	-	-	-	(Right bank)Unable to collect samples due to privately owned land
						2019/11/22	Sunny	5.3	Brown	Faint earth	Loamy	<5.9	41	41	0.04	-	-	-	-	-	-	-	(Right bank)Unable to collect samples due to privately owned land
						2020/2/10	Sunny	-3.6	Dull yellowish brown	None	Loamy	28	470	498	0.04	-	-	-	-	-	-	-	(Right bank)Unable to collect samples due to privately owned land
						2019/5/22	Cloudy	18.0	Black	Faint earth	Loamy	130	1,600	1,730	0.07	Blackish brown	Faint earth	Loamy	170	2,100	2,270	0.05	
			2019/8/26	Cloudy	25.1	Black	Faint earth	Loamy	61	960	1,021	0.07	Blackish brown	Faint earth	Loamy	160	2,100	2,260	0.06				
			2019/11/1	Sunny	17.3	Blackish brown	Faint earth	Loamy	150	2,500	2,650	0.06	Blackish brown	Faint earth	Loamy	140	2,300	2,440	0.07				
			2020/2/10	Sunny	3.4	Blackish brown	Faint earth	Loamy	33	590	623	0.05	Blackish brown	Faint earth	Loamy	63	1,000	1,063	0.06				
			2019/5/22	Cloudy	17.5	Dark brown	Faint earth	Loamy	35	500	535	0.07	Black	Faint earth	Loamy	290	3,200	3,490	0.08				
			2019/8/26	Cloudy	25.0	Blackish brown	Faint earth	Loamy	42	580	622	0.06	Blackish brown	Faint earth	Loamy	180	2,900	3,080	0.08				
			2019/11/1	Sunny	16.1	Dark brown	Faint earth	Loamy	32	520	552	0.07	Blackish brown	Faint earth	Loamy	52	800	852	0.06				
			2020/2/10	Sunny	6.2	Dark brown	Faint earth	Loamy	49	830	879	0.07	Blackish brown	Faint earth	Loamy	55	950	1,005	0.08				
			2019/5/29	Sunny	24.4	Blackish brown	Faint earth	Loamy	23	330	353	0.09	Brownish gray	None	Sandy	<5.3	8.5	8.5	0.04				
			2019/6/10	Rain	16.2	Blackish brown	Faint earth	Loamy	45	540	585	0.08	Blackish brown	None	Sandy	<7.1	12	12	0.06				
			2019/7/12	Cloudy	19.2	Blackish brown	Faint earth	Loamy	67	950	1,017	0.08	Blackish brown	None	Sandy	<6.1	8.5	8.5	0.04				
			2019/8/8	Sunny	32.0	Blackish brown	Faint earth	Loamy	98	1,300	1,398	0.07	Brownish gray	None	Sandy	<5.2	9.2	9.2	0.04				
			2019/9/5	Cloudy	23.4	Blackish brown	Faint earth	Loamy	47	740	787	0.07	Blackish brown	None	Sandy	<7.0	17	17	0.04				
			2019/11/1	Sunny	22.0	Blackish brown	Faint earth	Loamy	16	260	276	0.08	Blackish brown	None	Sandy	<4.2	4.6	4.6	0.05				
			2020/2/15	Sunny	10.0	Blackish brown	Faint earth	Loamy	110	1,700	1,810	0.08	Grayish yellowish brown	None	Sandy	<7.9	14	14	0.04				
			2019/5/27	Sunny	31.0	Dull yellowish brown	Faint earth	Loamy	25	250	275	0.06	Dull yellowish brown	None	Loamy	67	900	967	0.08				
			2019/6/10	Rain	15.8	Blackish brown	Faint earth	Loamy	54	820	874	0.07	Blackish brown	Faint earth	Loamy	34	460	494	0.08				
			2019/7/12	Cloudy	20.4	Dull yellowish brown	Faint earth	Loamy	34	450	484	0.06	Blackish brown	Faint earth	Loamy	80	1,200	1,280	0.08				
2019/8/6	Sunny	34.4	Dull yellowish brown	Faint earth	Loamy	35	530	565	0.07	Dull yellowish brown	Faint earth	Loamy	74	950	1,024	0.08							
2019/9/5	Cloudy	23.4	Dull yellowish brown	Faint earth	Loamy	36	600	636	0.07	Blackish brown	Faint earth	Loamy	46	770	816	0.08							
2019/11/1	Sunny	22.0	Dull yellowish brown	Faint earth	Loamy	24	380	404	0.07	Dull yellowish brown	Faint earth	Loamy	90	1,500	1,590	0.09							
2020/2/15	Sunny	13.3	Dark brown	Faint earth	Loamy	18	300	318	0.08	Dark brown	Faint earth	Loamy	68	1,200	1,268	0.08							
2019/5/5	Sunny	24.2	Dull yellowish brown	None	Loamy	11	120	131	0.05	Grayish yellowish brown	None	Loamy	12	150	162	0.05							
2019/8/26	Cloudy	27.1	Dark brown	Faint earth	Loamy	7.6	79	86.6	0.05	Dark brown	Faint earth	Loamy	11	160	171	0.05							
2019/11/26	Sunny	10.4	Dark brown	Faint earth	Loamy	<8.8	65	65	0.05	Blackish brown	Faint earth	Loamy	<9.7	110	110	0.05							
2020/2/6	Sunny	2.1	Dark brown	Faint earth	Loamy	<8.2	130	130	0.05	Blackish brown	Faint earth	Loamy	<6.0	110	110	0.05							
2019/5/5	Sunny	23.9	Brownish gray	None	Sandy	<6.7	10	10	0.05	Grayish yellowish brown	None	Sandy	<9.0	52	52	0.05							
2019/8/26	Cloudy	29.5	Dull yellowish brown	None	Sandy	<3.6	6.5	6.5	0.04	Dark brown	None	Sandy	<6.9	54	54	0.05							
2019/11/26	Sunny	10.1	Dull yellowish brown	None	Sandy	<5.5	14	14	0.05	Dull yellowish brown	None	Sandy	<5.3	55	55	0.05							
2020/2/6	Sunny	2.8	Grayish yellowish brown	None	Sandy	<3.9	11	11	0.05	Dull yellowish brown	None	Loamy	7.0	72	79.0	0.05							
2019/5/11	Sunny	23.2	Dark brown	Faint earth	Loamy	17	200	217	0.05	Grayish yellowish brown	Faint earth	Loamy	<5.1	5.2	5.2	0.05							
2019/8/5	Sunny	33.5	Grayish yellowish brown	None	Loamy	10	140	150	0.05	Dull yellowish brown	Faint earth	Loamy	<8.0	15	15	0.04							
2019/11/16	Sunny	14.0	Dark brown	Faint earth	Loamy	16	190	206	0.04	Grayish yellowish brown	Faint earth	Loamy	<4.4	11	11	0.04							
2020/2/13	Cloudy	7.3	Dark brown	Faint earth	Loamy	<8.3	84	84	0.05	Grayish yellowish brown	Faint earth	Loamy	<6.1	10	10	0.05							

Tochigi River (Surrounding Environment) 6/6

Location					Sampling Date	Weather	Air temperature (°C)	Surrounding Environment (Soil, Air dose)										Remarks				
No.	Water area		Location	Municipality				Left bank					Right bank									
								Color	Odor	Property	Activity concentration [Bq/kg(dry)]			Air Dose (µSv/h)	Color	Odor	Property		Activity concentration [Bq/kg(dry)]			Air Dose (µSv/h)
								Cs-134	Cs-137	Total					Cs-134	Cs-137	Total					
49	Omori River Area	Omori River	Tamotsu Bridge	Tochigi City	2019/5/11	Sunny	27.0	Blackish brown	Faint earth	Loamy	<9.6	100	100	0.05	Brown	Faint earth	Loamy	18	200	218	0.04	
					2019/8/5	Sunny	32.0	Dall yellowish brown	Faint earth	Loamy	9.7	110	119.7	0.04	Dall yellowish brown	None	Loamy	8.2	84	92.2	0.04	
					2019/11/25	Cloudy	16.4	Blackish brown	Faint earth	Loamy	7.4	140	147.4	0.04	Dall yellowish brown	Faint earth	Loamy	<7.1	86	86	0.05	
					2020/2/15	Sunny	9.4	Blackish brown	Faint earth	Loamy	<8.0	140	140	0.05	Dark brown	Faint earth	Loamy	<7.7	110	110	0.05	
					2019/5/11	Sunny	27.5	Brown	Faint earth	Loamy	13	130	143	0.05	Dark brown	Faint earth	Loamy	12	140	152	0.05	
			2019/6/5	Cloudy	24.5	Dall yellowish brown	Faint earth	Loamy	5.9	93	98.9	0.06	Dall yellowish brown	Faint earth	Loamy	13	130	143	0.05			
			2019/7/2	Cloudy	24.0	Brown	Faint earth	Loamy	<4.9	30	30	0.06	Dall yellowish brown	Faint earth	Loamy	7.7	120	127.7	0.05			
			2019/8/5	Sunny	36.4	Brown	Faint earth	Loamy	7.3	92	99.3	0.05	Dall yellowish brown	None	Loamy	11	120	131	0.05			
			2019/9/3	Cloudy	25.4	Brown	Faint earth	Loamy	15	230	245	0.04	Dall yellowish brown	Faint earth	Loamy	10	110	120	0.05			
			2019/11/16	Sunny	9.8	Brown	Faint earth	Loamy	<7.4	88	88	0.05	Dark brown	Faint earth	Loamy	<8.6	130	130	0.05			
	2020/2/13	Sunny	14.4	Dall yellowish brown	Faint earth	Loamy	<7.0	110	110	0.05	Dall yellowish brown	Faint earth	Loamy	<8.5	71	71	0.06					
	2019/5/11	Sunny	28.7	Blackish brown	None	Loamy	<9.8	130	130	0.06	Brown	Faint earth	Loamy	10	120	130	0.04					
	2019/6/5	Cloudy	25.0	Dall yellowish brown	Faint earth	Loamy	11	180	191	0.06	Brown	Faint earth	Loamy	6.0	63	69.0	0.05					
	2019/7/2	Cloudy	26.0	Dark brown	Faint earth	Loamy	14	170	184	0.04	Dall yellowish brown	Faint earth	Loamy	5.9	80	85.9	0.04					
	2019/8/5	Sunny	36.5	Dall yellowish brown	Faint earth	Loamy	15	170	185	0.05	Brown	Faint earth	Loamy	<6.9	45	45	0.04					
	2019/9/3	Rain	24.5	Dall yellowish brown	Faint earth	Loamy	11	200	211	0.04	Dall yellowish brown	Faint earth	Loamy	22	350	372	0.04					
	2019/11/21	Sunny	15.2	Dark brown	Faint earth	Loamy	12	140	152	0.05	Brown	Faint earth	Loamy	<7.8	92	92	0.05					
	2020/2/13	Sunny	15.5	Dark brown	Faint earth	Loamy	9.4	160	169.4	0.05	Brown	Faint earth	Loamy	<8.2	77	77	0.05					
	50	Omori River Area	Omori River	Otsome-ohashi Bridge	Oyama City	2019/5/7	Sunny	16.2	Brownish gray	None	Sandy	<6.7	19	19	0.11	Brownish gray	None	Sandy	12	150	162	0.13
						2019/6/13	Sunny	17.2	Brownish gray	None	Sandy	<5.8	15	15	0.11	Blackish brown	None	Loamy	24	330	354	0.12
2019/7/9						Cloudy	16.4	Dark olive	None	Sandy	<4.8	15	15	0.11	Blackish brown	Faint earth	Loamy	28	420	448	0.12	
2019/8/1						Cloudy	26.2	-	-	-	-	-	-	-	Dall yellowish brown	Faint earth	Loamy	24	330	354	0.13	
2019/9/4						Sunny	22.2	Dark olive	None	Sandy	<6.8	19	19	0.10	Blackish brown	Faint earth	Loamy	26	320	346	0.12	
2019/11/22						Cloudy	6.4	Dark olive	None	Sandy	<5.5	12	12	0.11	Dall yellowish brown	Faint earth	Loamy	19	190	209	0.12	
2020/2/10						Sunny	1.0	Dark olive	None	Sandy	<6.1	15	15	0.10	Brown	Faint earth	Loamy	17	270	287	0.10	
2019/5/17						Sunny	28.2	Blackish brown	None	Loamy	9.4	120	129.4	0.04	Dall yellowish brown	None	Loamy	14	140	154	0.04	
2019/8/19						Sunny	33.0	Blackish brown	Faint earth	Loamy	9.5	150	159.5	0.04	Blackish brown	Faint earth	Loamy	9.9	160	169.9	0.05	
2019/11/21						Sunny	12.2	Dark brown	Faint earth	Loamy	<9.5	110	110	0.04	Dark brown	Faint earth	Loamy	33	540	573	0.04	
51	Uzuma River Area	Uzuma River	Uzuma Bridge	Tochigi City	2020/2/14	Sunny	12.7	Dark brown	Faint earth	Loamy	<6.7	62	62	0.05	Dark brown	Faint earth	Loamy	11	180	191	0.06	
					2019/5/17	Sunny	27.8	Brown	Faint earth	Loamy	12	160	172	0.04	Dall yellowish brown	None	Loamy	8.8	110	118.8	0.04	
					2019/8/19	Sunny	31.0	Dall yellowish brown	Faint earth	Loamy	14	150	164	0.04	Blackish brown	Faint earth	Loamy	11	140	151	0.05	
					2019/11/21	Sunny	15.4	Dark brown	Faint earth	Loamy	<13	160	160	0.04	Dall yellowish brown	Faint earth	Loamy	<7.4	89	89	0.05	
					2020/2/14	Sunny	13.4	Dark brown	Faint earth	Loamy	<7.7	56	56	0.04	Dall yellowish brown	Faint earth	Loamy	9.0	93	102.0	0.05	
					2019/5/17	Sunny	25.3	Brownish gray	None	Loamy	18	230	248	0.06	Brownish gray	None	Loamy	<8.3	72	72	0.05	
52	Tonegawa River System	Watarase River Area	Watarase River intake weir at Sori Power Station	Nikko City	2019/8/19	Sunny	31.0	Dark brown	Faint earth	Loamy	15	160	175	0.06	Dark olive brown	Faint earth	Loamy	6.9	85	91.9	0.05	
					2019/11/21	Sunny	16.4	Blackish brown	Faint earth	Loamy	<7.9	110	110	0.06	Dark olive brown	Faint earth	Loamy	<9.6	52	52	0.05	
					2020/2/14	Sunny	15.8	Blackish brown	Faint earth	Loamy	12	160	172	0.06	Blackish brown	Faint earth	Loamy	<8.0	42	42	0.05	
					2019/5/17	Sunny	24.8	Brown	None	Loamy	11	110	121	0.04	Grayish yellowish brown	None	Loamy	18	210	228	0.05	
					2019/6/5	Cloudy	25.5	Grayish yellowish brown	Faint earth	Loamy	5.3	76	81.3	0.04	Grayish yellowish brown	Faint earth	Loamy	13	170	183	0.06	
					2019/7/2	Cloudy	27.5	Dark brown	Faint earth	Loamy	<5.5	39	39	0.04	Blackish brown	Faint earth	Loamy	16	250	266	0.05	
53	Tonegawa River System	Watarase River Area	Hajika Bridge	Ashikaga City	2019/8/19	Sunny	30.0	Dark brown	Faint earth	Loamy	<7.1	65	65	0.04	Blackish brown	Faint earth	Loamy	36	460	496	0.05	
					2019/9/3	Cloudy	24.4	Dark brown	Faint earth	Loamy	6.8	73	79.8	0.04	Dark brown	Faint earth	Loamy	15	240	255	0.05	
					2019/11/21	Sunny	15.5	Dall yellowish brown	Faint earth	Loamy	<6.8	90	90	0.04	Dark brown	Faint earth	Loamy	14	200	214	0.04	
					2020/2/14	Cloudy	17.2	Dall yellowish brown	Faint earth	Loamy	<6.9	64	64	0.05	Dark brown	Faint earth	Loamy	<9.2	100	100	0.05	
					2019/5/17	Sunny	25.3	Brownish gray	None	Loamy	18	230	248	0.06	Brownish gray	None	Loamy	<8.3	72	72	0.05	
					2019/8/19	Sunny	31.0	Dark brown	Faint earth	Loamy	15	160	175	0.06	Dark olive brown	Faint earth	Loamy	6.9	85	91.9	0.05	
54	Tonegawa River System	Watarase River Area	Watarase River	Nakabashi Bridge	Ashikaga City	2019/5/17	Sunny	25.3	Brownish gray	None	Loamy	18	230	248	0.06	Brownish gray	None	Loamy	<8.3	72	72	0.05
						2019/8/19	Sunny	31.0	Dall yellowish brown	Faint earth	Loamy	14	150	164	0.04	Blackish brown	Faint earth	Loamy	11	140	151	0.05
						2019/11/21	Sunny	15.4	Dark brown	Faint earth	Loamy	<13	160	160	0.04	Dall yellowish brown	Faint earth	Loamy	<7.4	89	89	0.05
						2020/2/14	Sunny	13.4	Dark brown	Faint earth	Loamy	<7.7	56	56	0.04	Dall yellowish brown	Faint earth	Loamy	9.0	93	102.0	0.05
						2019/5/17	Sunny	25.3	Brownish gray	None	Loamy	18	230	248	0.06	Brownish gray	None	Loamy	<8.3	72	72	0.05
						2019/8/19	Sunny	31.0	Dark brown	Faint earth	Loamy	15	160	175	0.06	Dark olive brown	Faint earth	Loamy	6.9	85	91.9	0.05
55	Tonegawa River System	Watarase River Area	Watarase-ohashi Bridge	Tatebayashi City	2019/5/17	Sunny	24.8	Brown	None	Loamy	11	110	121	0.04	Grayish yellowish brown	None	Loamy	18	210	228	0.05	
					2019/6/5	Cloudy	25.5	Grayish yellowish brown	Faint earth	Loamy	5.3	76	81.3	0.04	Grayish yellowish brown	Faint earth	Loamy	13	170	183	0.06	
					2019/7/2	Cloudy	27.5	Dark brown	Faint earth	Loamy	<5.5	39	39	0.04	Blackish brown	Faint earth	Loamy	16	250	266	0.05	
					2019/8/19	Sunny	30.0	Dark brown	Faint earth	Loamy	<7.1	65	65	0.04	Blackish brown	Faint earth	Loamy	36	460	496	0.05	
					2019/9/3	Cloudy	24.4	Dark brown	Faint earth	Loamy	6.8	73	79.8	0.04	Dark brown	Faint earth	Loamy	15	240	255	0.05	
					2019/11/21	Sunny	15.5	Dall yellowish brown	Faint earth	Loamy	<6.8	90	90	0.04	Dark brown	Faint earth	Loamy	14	200	214	0.04	
56	Tonegawa River System	Watarase River Area	Shankai Bridge	Tochigi City	2020/2/14	Cloudy	17.2	Dall yellowish brown	Faint earth	Loamy	<6.9	64	64	0.05	Dark brown	Faint earth	Loamy	<9.2	100	100	0.05	

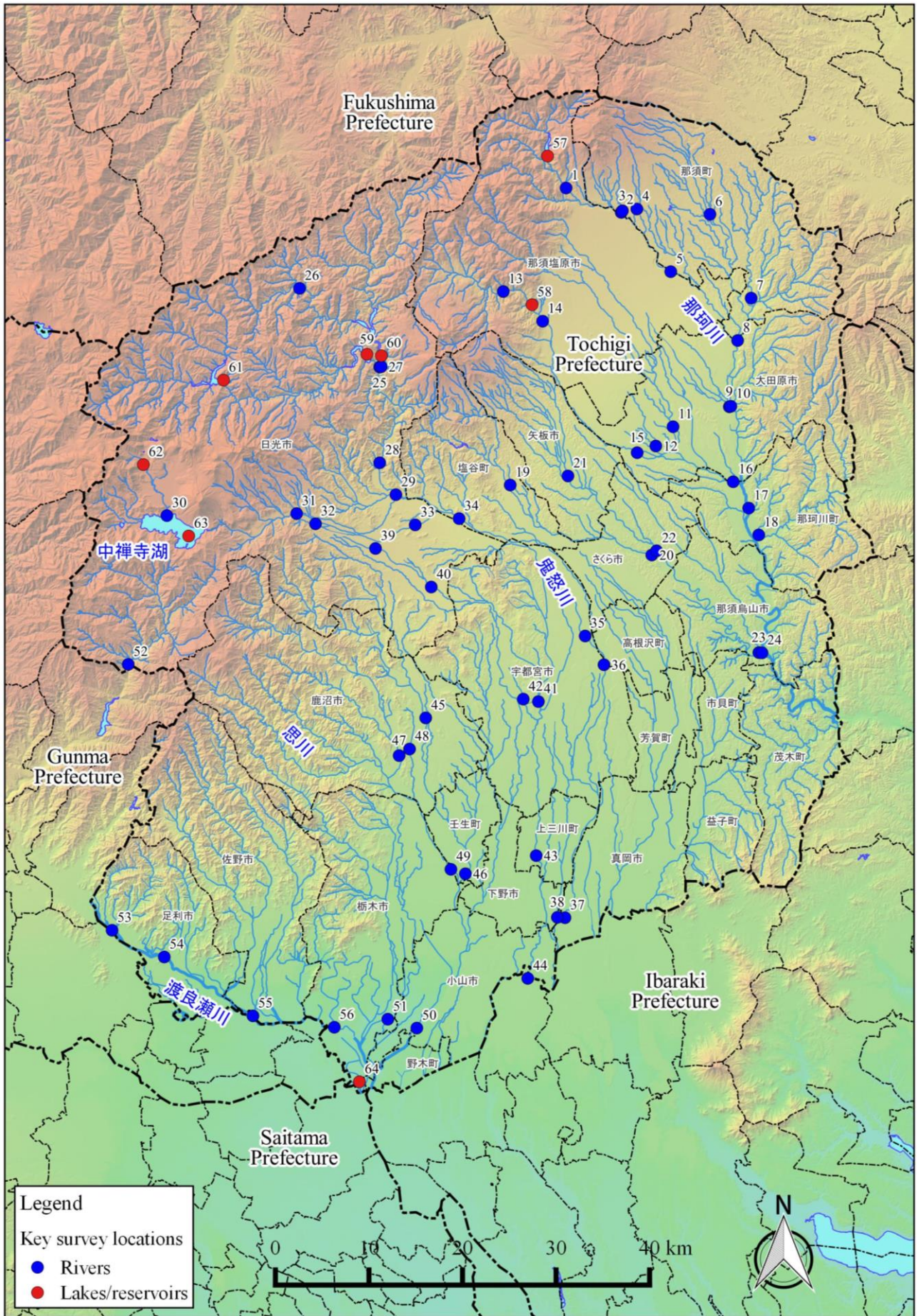
(Left bank)Unable to collect samples due to construction

Tochigi Lakes and Reservoirs (Sediment) 1/1

No.	Location			Municipality	Sampling Date	Weather	Air temperature (°C)	Water depth (m)	Sediment																	Activity concentration [Bq/kg(dry)]			Remarks			
	Water area	Location	Center						Sediment temperature (°C)	Sample length (cm)	Color	Odor	General items							Grain size distribution(%)			Sediment content (%)	Density (g/cm ³)	Property	Radioactive cesium						
													Coarse gravel	Medium gravel	Fine gravel	Coarse sand	Medium sand	Fine sand	Silt	Clay	Coarse sand	Medium sand				Fine sand	Silt	Clay		Cs-134	Cs-137	Total
																														Cs-134	Cs-137	Total
57	Nakagawa River System	Myama Dam Reservoir	Center	Nanashiobara City	2019/5/28	Cloudy	20.3	43.8	6.3	10	Dark olive	None	0.0	0.0	0.0	0.1	0.1	0.4	53.5	45.9	32.5	2.622	Silt	58	800	858						
					2019/8/15	Cloudy	24.6	24.0	13.6	10	Dark olive	None	0.0	1.0	2.4	5.6	9.2	9.9	37.4	35.2	44.2	2.537	Silt	37	440	477						
					2019/10/28	Sunny	12.8	45.2	11.0	10	Dark olive	None	0.0	0.0	0.0	0.2	0.5	0.9	47.0	51.4	38.2	2.594	Silt	47	790	837						
		2019/12/10	Sunny		4.2	34.8	6.0	10	Dark olive	None	0.0	0.0	0.0	0.0	0.3	1.2	49.6	48.9	39.5	2.517	Silt	24	420	444								
		2019/5/27	Sunny		28.4	22.7	13.6	10	Dark olive brown	None	0.0	0.0	0.0	0.0	2.0	18.3	54.0	25.7	36.3	2.592	Silt	21	270	291								
		2019/8/21	Cloudy		24.6	20.5	19.6	10	Blackish brown	None	0.0	0.0	0.0	0.1	6.8	60.7	32.3	58.7	2.444	Silt	13	180	193									
	58	Shibara Dam Reservoir	Center	Nanashiobara City	2019/6/28	Sunny	26.3	33.8	15.2	10	Dark grayish yellow	None	0.0	0.0	0.0	0.0	9.8	68.6	21.2	51.8	2.595	Silt	9.1	140	149.1							
					2019/12/10	Cloudy	10.4	33.5	9.4	10	Dark olive brown	None	0.0	0.0	0.0	0.0	9.4	61.9	29.7	45.0	2.520	Silt	11	160	171							
					2019/5/29	Cloudy	16.2	78.2	7.6	10	Dark olive	None	0.0	0.0	0.0	0.8	2.4	25.6	71.2	35.2	2.664	Silt	12	130	142							
					2019/8/6	Sunny	30.4	66.7	12.0	8	Dark olive	None	0.0	0.0	0.0	0.2	0.7	24.1	75.0	44.8	2.617	Silt	9.4	95	104.4							
					2019/10/17	Sunny	16.3	81.0	13.8	10	Dark olive	None	0.0	0.0	0.2	2.0	5.6	41.8	50.5	53.2	2.630	Silt	8.0	130	138.0							
					2019/12/6	Cloudy	3.1	86.3	10.1	10	Yellowish brown	None	0.0	0.0	0.0	0.0	0.1	35.5	64.4	47.2	2.620	Silt	-6.5	41	41							
59	Kawaji Dam Reservoir	Center	Nanashiobara City	2019/5/29	Cloudy	15.5	53.6	5.3	10	Grayish yellowish brown	None	0.0	0.0	0.0	0.0	4.0	63.1	32.7	35.3	2.624	Silt	8.2	88	96.2								
				2019/8/6	Sunny	31.5	38.5	11.1	7	Grayish yellowish brown	None	0.0	0.0	0.0	0.1	2.7	63.0	34.2	49.1	2.543	Silt	-7.0	79	79								
				2019/10/17	Sunny	13.7	50.8	12.5	10	Dull yellowish brown	None	0.0	0.0	0.0	0.0	1.5	55.2	42.9	47.2	2.607	Silt	10	100	110								
				2019/12/6	Sunny	2.2	50.0	7.5	10	Dark olive	None	0.0	0.0	0.0	0.1	0.5	48.2	51.2	48.7	2.559	Silt	-6.5	72	72								
				2019/5/29	Cloudy	18.2	72.3	8.6	10	Olive black	None	0.0	0.0	0.0	0.5	0.9	32.9	65.7	34.1	2.607	Silt	-10	54	54								
				2019/8/6	Sunny	23.8	68.0	9.9	10	Olive black	None	0.0	0.0	0.0	0.0	0.3	34.7	65.0	37.6	2.545	Silt	-10	92	92								
60	Kinugawa River System	Kawamata Dam Reservoir	Center	Nikko City	2019/10/17	Sunny	16.5	72.0	17.2	10	Dark grayish yellow	None	0.0	0.0	0.0	0.1	1.1	66.4	32.4	40.2	2.482	Silt	-9.6	37	37							
					2019/12/6	Snow	2.3	75.3	9.1	10	Dark olive	None	0.0	0.0	0.0	0.1	0.6	36.8	62.4	40.2	2.546	Silt	-8.3	19	19							
					2019/5/23	Sunny	16.5	13.0	10.9	10	Black	Faint hydrogen sulfide	0.0	0.0	0.1	0.1	0.2	45.0	54.6	11.7	2.388	Silt	110	1,600	1,710							
		2019/8/8	Sunny		25.6	12.9	12.0	10	Black	None	0.0	0.0	0.0	0.2	0.1	53.5	46.3	22.6	2.295	Silt	16	240	256									
		2019/10/2	Sunny		18.8	11.6	14.8	10	Black	None	0.0	0.0	0.0	0.1	0.3	43.1	56.3	19.0	2.322	Silt	38	600	638									
		2019/12/2	Cloudy		6.8	12.5	6.6	10	Black	None	0.0	0.0	0.0	0.1	0.2	35.3	64.4	15.0	2.307	Silt	42	720	762									
	61	Kinugawa River System	Kawamata Dam Reservoir	Center	Nikko City	2019/5/23	Sunny	15.5	163.0	7.5	10	Black	Faint sewage	0.0	0.0	0.0	0.1	0.8	44.3	54.8	12.6	2.159	Silt	-52	120	120						
						2019/8/8	Sunny	23.3	163.0	6.2	10	Black	None	0.0	0.0	0.0	0.1	1.1	47.0	51.2	15.7	2.152	Silt	33	660	713						
						2019/10/2	Sunny	15.6	163.1	9.1	10	Black	None	0.0	0.0	0.0	0.0	0.8	40.5	58.6	14.9	2.227	Silt	130	1,800	1,930						
			2019/11/22	Sunny		5.5	170.0	5.4	10	Black	None	0.0	0.0	0.0	0.1	0.6	33.0	66.4	16.5	2.233	Silt	83	860	943								
			2019/5/17	Sunny		21.1	4.8	22.2	10	Dark grayish yellow	None	0.0	0.0	0.0	0.0	2.8	59.9	37.1	30.4	2.580	Silt	-17	100	100								
			2019/8/19	Sunny		29.0	4.0	30.1	7	Yellowish gray	None	0.0	0.0	0.0	2.2	16.3	47.0	34.6	44.7	2.595	Silt	-9.5	63	63								
64	Watarase River System	Watarase Reservoir	Center	Tochigi City	2019/10/23	Cloudy	16.4	5.2	18.6	10	Yellowish gray	None	0.0	0.0	0.0	2.8	14.9	46.6	35.7	49.3	2.617	Silt	6.6	68	74.6							
					2019/12/11	Cloudy	9.2	6.2	9.8	6	Grayish olive	None	0.0	0.0	0.0	0.0	1.1	3.5	52.8	43.6	41.0	2.599	Silt	-9.3	77	77						

Tochigi Reservoirs (Surrounding Environment) 1/1

	Location				Sampling Date	Weather	Air temperature (°C)	Surrounding Environment(Soil,Air dose)						Remarks	
								Soil			Air Dose (μSv/h)				
	General items														
	Color	Odor	Property	Activity concentration [Bq/kg(dry)]											
Radioactive cesium															
No.	Water area	Location		Municipality					Cs-134	Cs-137	Total				
L a k e s R e s e r v o i r s	57	Nakagawa River System	Miyama Dam Reservoir	Center	Nasushiobara City	2019/5/28	Cloudy	20.5	Dull yellowish brown	None	Loamy	<2.8	4.4	4.4	0.06
						2019/8/15	Cloudy	24.6	Brown	Faint earth	Loamy	12	200	212	0.06
						2019/10/28	Sunny	12.8	Grayish yellowish brown	Faint earth	Loamy	<4.0	46	46	0.06
			2019/12/10	Sunny		4.2	Grayish yellowish brown	Faint earth	Loamy	28	410	438	0.07		
			2019/5/27	Sunny		28.4	Grayish yellowish brown	Faint earth	Loamy	32	420	452	0.07		
			2019/8/21	Cloudy		24.6	Brown	Faint earth	Loamy	<5.8	23	23	0.07		
	58		Shiobara Dam Reservoir	Center		2019/10/28	Sunny	20.5	Brown	None	Loamy	61	960	1,021	0.10
						2019/12/10	Cloudy	10.4	Brown	Faint earth	Loamy	8.3	140	148.3	0.07
	59		Kawaji Dam Reservoir	Center		2019/5/29	Cloudy	16.2	Olive brown	Faint earth	Loamy	60	780	840	0.12
						2019/8/6	Sunny	30.4	Olive brown	Faint earth	Loamy	27	390	417	0.11
						2019/10/17	Sunny	16.3	Black	Faint earth	Loamy	22	330	352	0.08
						2019/12/6	Cloudy	3.1	Dull yellowish brown	Faint earth	Loamy	51	790	841	0.09
	60		Ikari Dam Reservoir	Center		2019/5/29	Cloudy	15.5	Dull yellowish brown	Faint earth	Loamy	30	340	370	0.09
						2019/8/6	Sunny	31.5	Dull yellowish brown	None	Loamy	32	530	562	0.09
						2019/10/17	Sunny	13.7	Dull yellowish brown	Faint earth	Loamy	42	470	512	0.07
						2019/12/6	Sunny	2.2	Dark brown	Faint earth	Loamy	40	650	690	0.08
	61	Kinugawa River System	Kawamata Dam Reservoir	Center	Nikko City	2019/5/29	Cloudy	18.2	Dark brown	Faint earth	Loamy	<6.0	30	30	0.06
						2019/8/6	Sunny	23.8	Blackish brown	Faint earth	Loamy	8.8	90	98.8	0.06
						2019/10/17	Sunny	16.5	Blackish brown	Faint earth	Loamy	<8.2	40	40	0.04
						2019/12/6	Snow	2.3	Blackish brown	Faint earth	Loamy	<7.8	37	37	0.05
62		Lake Yunoko	Center		2019/5/23	Sunny	16.5	Dull yellowish brown	Faint earth	Loamy	<8.7	91	91	0.06	
					2019/8/8	Sunny	25.6	Brown	Faint earth	Loamy	8.0	85	93.0	0.06	
					2019/10/2	Sunny	18.8	Brown	Faint earth	Loamy	<7.4	72	72	0.06	
					2019/12/2	Cloudy	6.8	Brown	Faint earth	Loamy	<5.5	42	42	0.06	
63		Lake Chuzenji	Center		2019/5/23	Sunny	15.5	Black	Faint earth	Loamy	53	660	713	0.05	
					2019/8/8	Sunny	23.3	Black	Faint earth	Loamy	36	480	516	0.05	
					2019/10/2	Sunny	15.6	Black	Faint earth	Loamy	13	190	203	0.06	
					2019/11/22	Sunny	5.5	Black	Faint earth	Loamy	36	750	786	0.05	
64	Watarase River System	Watarase Reservoir	Center	Tochigi City	2019/5/17	Sunny	21.1	Grayish yellowish brown	None	Loamy	36	500	536	0.05	
					2019/8/19	Sunny	29.0	Brown	Faint earth	Loamy	27	360	387	0.05	
					2019/10/23	Cloudy	16.4	Dark brown	Faint earth	Loamy	12	200	212	0.05	
					2019/12/11	Cloudy	9.2	Brown	Faint earth	Loamy	10	150	160	0.05	



Survey Locations (Tochigi Prefecture)