

## **FY2019 Iwate Prefecture Survey Results**

[Outline of results]

### (1) Water

Rivers

Radioactive cesium (Cs-134, Cs-137): Not detectable at any location

Coastal areas

Radioactive cesium (Cs-134, Cs-137): Not detectable at any location

### (2) Sediments

Rivers

Cs-134: Not detectable at any location

Cs-137: 1.9 – 52 Bq/kg (dry)

Coastal areas

Cs-134: Not detectable at any location

Cs-137: ND - 25 Bq/kg (dry)

### (3) Surrounding Environment

#### (a) Soil

Rivers

Cs-134: ND - 78 Bq/kg (dry)

Cs-137: 1.4 - 1,200 Bq/kg (dry)

#### (b) Ambient dose rate

Rivers

0.03 - 0.07  $\mu$ Sv/h

# Iwate River (Water) 1/2

Location				Sampling Date	Weather	Air temperature (°C)	Water depth (m)	Water							Activity concentration(Bq/L)		Remarks			
No.	Water area	Location	Municipality					General items							Radioactive cesium					
								Water temperature (°C)	Sampling depth (m)	Color	Odor	Transparency (cm)	Electrical conductivity (mS/m)	SS (mg/L)	Turbidity (FNU)	Cs-134		Cs-137		
R i v e r s	1	Sakari River Lower Reaches	Sano Bridge	Ofunato City	2019/5/11	Sunny	14.7	0.7	12.5	0.0	Light grayish greenish yellow	None	>100	143	1	0.8	<0.84	<0.85		
					2019/1/9	Cloudy	12.0	0.4	11.1	0.0	Light grayish yellow green	None	>100	359	<1	0.3	<0.53	<0.54		
		2	Kesen River	Ancha Bridge	Rikuzentakada City	2019/5/12	Sunny	15.6	0.4	12.9	0.0	Light grayish yellow green	None	>100	328	2	1.0	<0.74	<0.80	
						2019/11/10	Sunny	13.6	0.3	12.0	0.0	Light grayish yellow green	None	>100	1,360	1	0.5	<0.44	<0.79	
						2019/5/10	Sunny	23.4	0.3	18.3	0.0	Light grayish greenish yellow	None	67	13.4	5	4.6	<0.81	<0.67	
						2019/8/10	Rain	21.1	0.4	20.2	0.0	Grayish yellow	None	>100	14.9	3	1.0	<0.81	<0.74	
						2019/11/6	Sunny	16.0	0.4	12.1	0.0	Light grayish yellow green	None	>100	12.0	<1	0.6	<0.66	<0.47	
						2020/2/6	Sunny	-2.0	0.3	3.8	0.0	Light grayish yellow	None	>100	14.1	3	1.2	<0.78	<0.92	
						2019/5/13	Sunny	14.4	0.4	12.4	0.0	Light grayish greenish yellow	None	>100	9.4	<1	1.2	<0.76	<0.85	
						2019/1/11	Sunny	8.6	0.3	8.4	0.0	Light grayish greenish yellow	None	>100	9.5	<1	0.2	<0.69	<0.75	
		5	Kurosawa River	Kawarada Bridge	Kanegasaki Town	2019/5/5	Sunny	26.4	0.6	16.5	0.0	Grayish greenish yellow	None	49	9.1	7	8.5	<0.78	<0.87	
						2019/1/1	Sunny	19.0	0.6	14.7	0.0	Light grayish yellow	None	>100	11.9	1	0.9	<0.53	<0.61	
						2019/5/5	Sunny	26.3	0.7	9.3	0.0	Grayish yellow green	None	>100	6.3	3	2.7	<0.66	<0.85	
						2019/8/5	Sunny	28.8	0.5	16.8	0.0	Light grayish yellow	None	>100	7.6	2	1.6	<0.81	<0.88	
						2019/1/11	Cloudy	14.4	0.5	12.0	0.0	Grayish yellow green	None	46	8.8	6	8.5	<0.85	<0.66	
						2020/2/9	Snow	-2.3	-	-	-	-	-	-	-	-	-	-	-	Unable to collect samples due to snow on the ground
						2019/5/5	Sunny	27.4	0.6	12.9	0.0	Light grayish yellow	None	>100	6.8	3	3.3	<0.66	<0.74	
						2019/8/5	Sunny	34.4	0.4	24.0	0.0	Light grayish greenish yellow	None	>100	11.6	2	1.4	<0.82	<0.80	
						2019/1/1	Sunny	18.4	0.3	14.6	0.0	Grayish yellow green	None	84	10.5	3	3.3	<0.61	<0.74	
						2020/2/9	Sunny	-1.0	0.4	2.6	0.0	Light grayish greenish yellow	None	>100	12.7	2	1.4	<0.86	<0.92	
						2019/5/8	Sunny	24.4	0.4	12.4	0.0	Grayish greenish yellow	None	34	9.2	12	13	<0.74	<0.90	
						2019/8/5	Sunny	35.6	0.4	29.0	0.0	Light grayish yellow	None	>100	16.9	4	2.0	<0.87	<0.80	
						2019/11/2	Sunny	17.3	0.3	13.7	0.0	Light grayish yellow	None	>100	14.8	3	2.1	<0.53	<0.70	
						2020/2/9	Sunny	-1.8	0.4	4.6	0.0	Grayish yellow	None	>100	25.8	2	1.9	<0.77	<0.70	
						2019/5/8	Sunny	23.8	0.4	16.5	0.0	Grayish reddish yellow	None	10	9.1	48	70	<0.87	<0.67	
						2019/8/5	Sunny	34.5	0.5	25.8	0.0	Grayish yellow green	None	67	9.5	12	4.4	<0.53	<0.66	
						2019/11/2	Sunny	15.0	0.3	12.8	0.0	Light grayish yellow	None	>100	15.4	1	1.3	<0.65	<0.48	
						2020/2/11	Sunny	3.0	0.4	3.9	0.0	Light grayish yellow green	None	>100	21.8	1	1.2	<0.60	<0.74	
					2019/5/8	Sunny	21.2	0.8	12.2	0.0	Grayish yellow	None	86	8.2	5	5.1	<0.77	<0.80		
					2019/8/6	Sunny	36.8	0.4	29.4	0.0	Light grayish yellow	None	>100	12.2	4	1.7	<0.81	<0.67		
					2019/11/2	Sunny	14.2	0.3	11.3	0.0	Light grayish greenish yellow	None	>100	10.2	<1	0.5	<0.61	<0.61		
					2020/2/11	Cloudy	0.3	0.3	1.8	0.0	Light grayish yellow	None	>100	12.3	<1	0.6	<0.74	<0.55		
					2019/5/8	Sunny	18.3	0.4	11.0	0.0	Light grayish greenish yellow	None	61	13.3	7	4.6	<0.82	<0.67		
					2019/8/6	Sunny	36.0	0.3	28.0	0.0	Light grayish greenish yellow	None	>100	21.6	10	3.7	<0.68	<0.55		
					2019/11/2	Sunny	9.3	0.3	10.2	0.0	Light grayish yellow green	None	>100	18.9	2	1.4	<0.58	<0.61		
					2020/2/11	Sunny	-0.2	0.3	0.6	0.0	Light grayish greenish yellow	None	>100	24.1	2	1.2	<0.70	<0.86		
					2019/5/7	Sunny	17.3	0.5	12.7	0.0	Grayish yellow green	None	32	9.6	18	9.3	<0.71	<0.80		
					2019/8/4	Sunny	32.8	0.4	30.0	0.0	Grayish yellow green	None	>100	17.3	3	1.6	<0.86	<0.85		
					2019/11/4	Sunny	7.0	0.3	9.9	0.0	Light grayish yellow	None	>100	16.3	1	1.1	<0.61	<0.55		
					2020/2/2	Sunny	3.6	0.5	4.4	0.0	Grayish yellow green	None	>100	14.9	2	1.2	<0.63	<0.74		
					2019/5/6	Cloudy	19.4	0.4	12.3	0.0	Light grayish greenish yellow	None	>100	12.1	7	3.9	<0.57	<0.74		
					2019/8/6	Sunny	28.9	0.3	26.7	0.0	Light grayish yellow	None	>100	19.7	1	1.2	<0.65	<0.70		
					2019/11/4	Sunny	11.8	0.3	10.6	0.0	Light grayish greenish yellow	None	>100	17.2	1	1.4	<0.77	<0.66		
					2020/2/2	Sunny	4.9	0.3	4.8	0.0	Light grayish greenish yellow	None	>100	12.9	3	1.7	<0.71	<0.86		
					2019/5/6	Cloudy	17.6	0.6	12.4	0.0	Grayish greenish yellow	None	53	8.9	11	8.3	<0.77	<0.74		
					2019/8/6	Sunny	31.0	0.4	27.5	0.0	Light grayish greenish yellow	None	>100	15.8	3	1.3	<0.71	<0.48		
					2019/11/4	Sunny	12.2	0.6	12.4	0.0	Grayish greenish yellow	None	>100	13.9	2	2.2	<0.82	<0.74		
					2020/2/2	Sunny	6.2	0.4	4.7	0.0	Light grayish greenish yellow	None	>100	13.5	6	2.7	<0.82	<0.80		

# Iwate River (Water) 2/2

Location				Sampling Date	Weather	Air temperature (°C)	Water depth (m)	Water							Remarks			
No.	Water area	Location	Municipality					General items				Activity concentration(Bq/L)						
								Water temperature (°C)	Sampling depth (m)	Color	Odor	Transparency (cm)	Electrical conductivity (mS/m)	SS (mg/L)		Turbidity (FNU)	Radioactive cesium Cs-134	Cs-137
R i v e r s	15	Sokei River	Unada Bridge	Ichinoseki City	2019/5/10	Sunny	23.1	0.3	15.9	0.0	Light grayish yellow	None	>100	16.7	2	2.6	<0.76	<0.59
					2019/8/7	Sunny	32.2	0.4	24.4	0.0	Greenish yellowish white	None	>100	18.8	1	0.9	<0.85	<0.74
					2019/11/8	Cloudy	9.0	0.3	10.8	0.0	Light grayish yellow	None	>100	16.2	<1	0.5	<0.82	<0.66
					2020/2/10	Sunny	2.5	0.3	3.8	0.0	Light grayish greenish yellow	None	>100	17.5	2	0.9	<0.74	<0.80
	16	Sarusawa River	Kannon Bridge		2019/5/10	Sunny	15.9	0.4	11.5	0.0	Greenish yellowish white	None	>100	19.6	<1	0.6	<0.67	<0.74
					2019/8/7	Sunny	27.3	0.5	17.7	0.0	Light grayish yellow green	None	>100	28.7	<1	0.4	<0.77	<0.67
					2019/11/8	Cloudy	9.2	0.4	10.1	0.0	Light grayish yellow green	None	>100	28.6	<1	0.3	<0.60	<0.70
					2020/2/10	Sunny	-0.4	0.5	3.1	0.0	Light grayish yellow green	None	>100	31.5	<1	0.4	<0.84	<0.61
	17	Satetsu River	Oide Bridge		2019/5/10	Sunny	19.2	0.6	12.0	0.0	Light grayish greenish yellow	None	>100	14.2	6	3.6	<0.76	<0.74
					2019/8/7	Sunny	30.2	0.4	22.0	0.0	Greenish yellowish white	None	>100	16.7	<1	0.4	<0.51	<0.88
					2019/11/8	Cloudy	9.0	0.6	10.8	0.0	Light grayish yellow	None	>100	17.4	<1	0.3	<0.57	<0.75
					2020/2/10	Sunny	0.7	0.6	6.6	0.0	Light grayish greenish yellow	None	>100	22.9	1	0.6	<0.73	<0.86
	18	Satetsu River	Kanzaki Bridge		2019/5/6	Sunny	22.1	0.5	15.6	0.0	Light grayish yellow green	None	>100	15.8	4	1.4	<0.76	<0.80
					2019/8/8	Sunny	31.5	0.5	23.7	0.0	Light grayish greenish yellow	None	>100	19.6	2	0.8	<0.54	<0.88
					2019/11/3	Sunny	10.7	0.5	11.2	0.0	Light grayish greenish yellow	None	>100	16.9	2	0.7	<0.79	<0.55
					2020/2/8	Cloudy	0.6	0.4	3.6	0.0	Light grayish greenish yellow	None	>100	20.7	2	0.7	<0.75	<0.93
	19	Senmaya River Upper Reaches	Miyata Bridge		2019/5/10	Sunny	22.4	0.3	18.2	0.0	Grayish yellow	None	44	16.5	10	8.2	<0.76	<0.84
					2019/8/7	Sunny	35.5	0.5	25.4	0.0	Light grayish yellow	None	>100	17.7	2	1.4	<0.81	<0.74
					2019/11/8	Cloudy	9.0	0.3	10.3	0.0	Light grayish yellow green	None	>100	15.4	<1	1.1	<0.69	<0.79
					2020/2/6	Sunny	-2.2	0.3	3.4	0.0	Light grayish yellow	None	>100	16.7	3	1.8	<0.79	<0.61
	20	Kitakami River	Kitakamigawa Bridge		2019/5/6	Cloudy	21.8	0.5	13.0	0.0	Grayish yellow green	None	58	9.2	10	7.1	<0.67	<0.80
					2019/8/8	Sunny	34.5	0.5	29.4	0.0	Light grayish yellow	None	>100	16.1	2	0.9	<0.88	<0.80
					2019/11/3	Cloudy	11.4	0.3	12.1	0.0	Light grayish yellow	None	>100	14.0	2	1.5	<0.68	<0.88
					2020/2/3	Sunny	2.5	0.3	4.3	0.0	Light grayish yellow	None	>100	13.0	5	2.3	<0.60	<0.55
	21	Kinomi River	Higuchi Bridge		2019/5/13	Sunny	19.3	0.5	15.1	0.0	Light grayish greenish yellow	None	73	22.1	6	5.2	<0.57	<0.80
					2019/8/8	Sunny	33.7	0.4	24.8	0.0	Light grayish yellow	None	90	23.5	3	2.0	<0.72	<0.74
					2019/11/3	Cloudy	16.0	0.4	12.1	0.0	Yellow greenish white	None	>100	18.1	<1	0.7	<0.68	<0.61
					2020/2/3	Sunny	6.9	0.4	4.8	0.0	Light grayish yellow green	None	>100	27.1	3	1.9	<0.66	<0.55
22	Kinryu River	Terjin Bridge	2019/5/13	Sunny	23.4	0.3	19.2	0.0	Grayish greenish yellow	None	19	18.2	25	26	<0.85	<0.90		
			2019/8/8	Sunny	36.3	0.2	33.2	0.0	Grayish yellow	None	22	20.5	8	4.2	<0.67	<0.90		
			2019/11/6	Sunny	16.2	0.3	11.5	0.0	Light grayish yellow	None	85	15.5	4	2.9	<0.57	<0.75		
			2020/2/3	Sunny	9.8	0.3	5.2	0.0	Light grayish yellow	None	>100	13.1	5	3.4	<0.74	<0.66		

# Iwate River (Sediment) 1/2

No.	Location			Sampling Date	Weather	Air temperature (°C)	Water depth (m)	Sediment														Activity concentration [Bq/kg(dry)]			Remarks		
	Water area	Location	Municipality					General items				Grain size distribution(%)						Sediment content		Density (g/cm <sup>3</sup> )	Property	Radioactive cesium					
								Sediment temperature (°C)	Sample length (cm)	Color	Odor	Coarse gravel	Medium gravel	Fine gravel	Coarse sand	Medium sand	Fine sand	Silt	Clay			Sediment content (%)	Density (g/cm <sup>3</sup> )	Cs-134		Cs-137	Total
R i v e r S y s t e m	1	Sakari River Lower Reaches	Sano Bridge	Ofunato City	2019/5/11	Sunny	14.7	0.7	12.3	3	Olive black	Faint seaweed	0.0	31.7	17.5	13.9	26.6	3.9	2.3	4.2	76.3	2.677	Sand/gravel	<5.7	9.3	9.3	
					2019/1/19	Cloudy	12.0	0.4	13.0	3	Blackish brown	None	0.0	17.2	16.5	24.2	36.8	2.85	0.7	1.9	78.8	2.695	Sand/gravel	<4.3	5.8	5.8	
	2	Kesen River	Aneha Bridge	Rikuzentakata City	2019/5/12	Sunny	15.6	0.4	13.2	3	Olive black	Faint seaweed	0.0	8.4	12.9	17.5	39.9	15.6	3.4	2.3	79.7	2.715	Sand/gravel	<0.43	1.9	1.9	
					2019/1/10	Sunny	13.6	0.3	12.2	3	Blackish brown	None	0.0	21.7	14.6	18.4	25.8	16.7	1.1	1.9	84.0	2.747	Sand/gravel	<3.8	3.5	3.5	
	3	Okawa River	Prefectural border with Miyagi	Ichinoseki City	2019/5/10	Sunny	23.4	0.3	18.5	3	Blackish brown	Faint algae	0.0	23.8	27.1	38.9	17.2	1.8	1.5	1.9	76.6	2.762	Sand/gravel	<4.6	31	31	
					2019/8/10	Rain	21.1	0.4	21.2	3	Blackish brown	None	0.0	6.9	13.4	46.3	27.8	3.2	0.8	1.6	77.2	2.766	Sand/gravel	<4.6	28	28	
					2019/1/16	Sunny	16.0	0.4	12.0	3	Blackish brown	None	0.0	17.6	24.6	23.4	29.8	2.4	0.6	1.7	79.4	2.725	Sand/gravel	<3.6	34	34	
					2020/2/6	Sunny	-2.0	0.3	2.5	3	Dark brown	None	2.9	15.4	13.0	20.3	43.2	3.1	0.0	2.0	75.3	2.725	Sand/gravel	<4.7	29	29	
	4	Tsuayagawa River	Chiyogahara Bridge		2019/5/13	Sunny	14.4	0.4	12.1	3	Blackish brown	None	0.0	18.4	11.8	9.0	38.7	17.0	1.8	3.4	76.2	2.786	Sand/gravel	<5.0	50	50	
					2019/1/11	Sunny	8.6	0.3	8.8	3	Olive black	None	0.0	13.2	34.8	39.3	10.8	0.4	0.0	1.5	78.9	2.739	Sand/gravel	<5.4	25	25	
	5	Karasawa River	Kawarada Bridge	Kanegasaki Town	2019/5/5	Sunny	26.4	0.6	17.2	3	Blackish brown	Faint swamp	0.0	21.5	48.6	24.6	3.6	0.1	0.5	1.0	82.9	2.705	Gravel/sand	<4.7	15	15	
					2019/1/1	Sunny	19.0	0.6	13.7	3	Blackish brown	None	0.0	20.4	13.7	22.7	37.9	3.4	0.6	1.3	79.0	2.769	Sand/gravel	<5.2	9.1	9.1	
	6	Iwaba River	Ogao Bridge		2019/5/5	Sunny	26.3	0.7	9.4	3	Olive black	Faint sewage	0.0	6.9	27.7	14.5	31.2	14.4	2.1	3.3	76.8	2.613	Sand/gravel	<3.2	4.8	4.8	
					2019/8/5	Sunny	28.8	0.5	17.7	3	Blackish brown	None	0.0	15.0	15.2	34.3	42.0	2.1	0.0	1.4	76.0	2.742	Sand/gravel	<3.4	3.4	3.4	
7	Sajin Bridge		Oshu City	2019/1/11	Cloudy	14.4	0.5	12.5	3	Blackish brown	None	0.0	7.1	16.4	34.1	36.8	3.4	0.5	1.8	81.5	2.721	Sand/gravel	<3.7	5.2	5.2		
				2020/2/9	Snow	-2.3	-	-	-	-	-	-	-	-	-	-	-	-	-	-	-	-	-	-	-	Unable to collect samples due to snow on the ground.	
8	Kitakami River	Fuji Bridge		2019/5/5	Sunny	27.4	0.6	12.3	3	Blackish brown	Faint swamp	0.0	13.9	20.8	24.2	33.4	5.2	0.7	1.9	78.8	2.736	Sand/gravel	<2.7	9.6	9.6		
				2019/8/5	Sunny	34.4	0.4	24.5	3	Blackish brown	Faint swamp	0.0	19.5	34.9	24.0	17.0	2.4	0.5	1.8	77.9	2.679	Sand/gravel	<3.6	6.4	6.4		
9	Shiratori River	Shiratori Bridge		2019/1/1	Sunny	18.4	0.3	14.5	3	Dark brown	None	0.0	20.8	14.7	15.2	37.4	8.1	1.8	2.2	78.1	2.677	Sand/gravel	<5.1	8.8	8.8		
				2020/2/9	Sunny	-1.0	0.4	2.4	3	Dark brown	None	0.0	8.8	6.2	25.1	46.4	9.3	0.8	3.3	76.7	2.703	Sand/gravel	<4.4	4.4	4.4		
10	Kitakami River System	Koromo River	Koromogawa Bridge	2019/5/8	Sunny	24.4	0.4	13.4	3	Blackish brown	Faint algae	0.0	23.4	19.1	18.7	32.7	3.8	0.6	1.7	78.7	2.681	Sand/gravel	<4.9	6.7	6.7		
				2019/8/5	Sunny	35.6	0.4	28.8	3	Blackish brown	Faint phytoplankton	0.0	21.1	19.6	23.9	29.8	3.7	0.0	1.7	83.3	2.690	Sand/gravel	<2.4	4.6	4.6		
11	Ota River	Hitosuji Bridge		2019/1/2	Sunny	17.3	0.3	13.8	3	Blackish brown	None	0.0	17.9	10.8	11.4	40.9	14.2	2.7	2.1	75.3	2.688	Sand/gravel	<5.1	23	23		
				2020/2/9	Sunny	-1.8	0.4	4.4	3	Dark brown	Faint swamp	0.0	20.0	22.5	23.3	28.7	3.3	0.6	1.7	80.4	2.693	Sand/gravel	<4.3	7.3	7.3		
12	Iwai River Middle Reaches	Kamano Bridge		2019/5/8	Sunny	21.8	0.4	16.3	3	Blackish brown	Faint swamp	0.0	30.7	22.9	17.0	25.5	1.6	0.8	1.5	75.4	2.679	Sand/gravel	<4.9	27	27		
				2019/8/5	Sunny	34.5	0.5	25.8	3	Dark brown	Faint swamp	0.0	0.0	3.2	8.9	46.6	11.4	5.0	4.2	71.5	2.628	Sand/gravel	<3.2	48	48		
13	Iwai River Lower Reaches	Kozenji Bridge	Ichinoseki City	2019/1/2	Sunny	15.0	0.3	12.5	3	Dark brown	Faint swamp	0.0	15.4	10.3	19.0	44.4	7.9	0.9	2.2	71.0	2.673	Sand/gravel	<5.8	35	35		
				2020/2/11	Sunny	3.0	0.4	3.6	3	Brown	None	0.0	1.2	2.7	4.7	65.8	16.8	4.6	4.2	71.4	2.648	Sand/gravel	<6.3	50	50		
14	Kitakami River	Chitose Bridge (Kozenji)		2019/5/8	Sunny	21.2	0.8	13.0	3	Dark brown	None	0.0	1.9	3.7	26.2	60.2	3.2	0.2	4.6	73.7	2.660	Sand/gravel	<5.2	22	22		
				2019/8/6	Sunny	36.8	0.4	29.6	3	Blackish brown	Faint phytoplankton	0.0	21.0	9.2	18.4	45.9	3.4	0.7	1.4	78.3	2.633	Sand/gravel	<5.1	26	26		
15	Ota River	Hitosuji Bridge		2019/1/2	Sunny	14.2	0.3	12.6	3	Dark brown	None	0.0	14.2	10.3	34.6	33.1	3.8	1.7	2.3	72.2	2.626	Sand/gravel	<5.8	41	41		
				2020/2/11	Cloudy	0.3	0.3	2.2	3	Dark brown	None	0.0	24.8	18.5	29.6	23.1	1.7	0.4	1.9	80.0	2.633	Sand/gravel	<4.7	23	23		
16	Iwai River Middle Reaches	Kamano Bridge		2019/5/8	Sunny	18.3	0.4	13.0	3	Blackish brown	Faint algae	0.0	9.5	10.0	32.8	42.8	1.8	0.8	2.3	75.4	2.726	Sand/gravel	<4.9	28	28		
				2019/8/6	Sunny	36.0	0.3	28.8	3	Dark brown	None	0.0	11.9	11.9	19.0	45.8	8.3	0.8	2.3	76.7	2.697	Sand/gravel	<4.4	30	30		
17	Iwai River Middle Reaches	Kamano Bridge		2019/1/2	Sunny	9.3	0.3	10.8	3	Grayish yellowish brown	None	0.0	18.6	12.0	26.7	36.6	3.8	0.2	2.0	77.9	2.707	Sand/gravel	<4.9	27	27		
				2020/2/11	Sunny	-0.2	0.3	0.7	3	Dark brown	None	0.0	13.6	6.5	14.9	39.9	18.9	3.6	2.6	75.0	2.722	Sand/gravel	<4.0	31	31		
18	Iwai River Middle Reaches	Kamano Bridge		2019/5/7	Sunny	17.3	0.5	13.4	3	Blackish brown	None	0.0	17.3	17.4	29.2	31.1	2.0	0.7	1.9	75.5	2.657	Sand/gravel	<5.5	25	25		
				2019/8/4	Sunny	32.8	0.4	29.9	3	Blackish brown	Faint swamp	0.0	24.6	27.5	26.5	19.3	0.6	0.1	1.4	78.1	2.663	Sand/gravel	<3.4	19	19		
19	Iwai River Middle Reaches	Kamano Bridge		2019/1/4	Sunny	7.0	0.3	10.3	3	Blackish brown	None	0.0	1.7	1.4	15.3	67.1	9.7	2.0	2.9	71.0	2.648	Sand	<5.7	38	38		
				2020/2/2	Sunny	3.6	0.5	4.8	3	Blackish brown	None	0.0	2.9	3.1	13.1	47.7	27.7	1.9	3.7	72.4	2.701	Sand/gravel	<4.1	33	33		
20	Iwai River Lower Reaches	Kozenji Bridge	Ichinoseki City	2019/5/6	Cloudy	19.4	0.4	13.3	3	Blackish brown	None	0.0	26.6	34.6	22.6	9.6	3.9	1.5	1.1	78.6	2.666	Gravel/sand	<5.3	22	22		
				2019/8/6	Sunny	28.9	0.3	27.6	3	Blackish brown	Faint phytoplankton	0.0	25.1	42.2	19.8	7.6	3.7	0.4	1.3	81.0	2.662	Sand/gravel	<4.4	16	16		
21	Iwai River Lower Reaches	Kozenji Bridge	Ichinoseki City	2019/1/4	Sunny	11.8	0.3	11.3	3	Dark brown	Faint phytoplankton	0.0	30.3	16.3	7.1	9.1	25.1	8.6	3.6	80.8	2.638	Sand/gravel	<4.2	19	19		
				2020/2/2	Sunny	4.9	0.3	5.0	3	Blackish brown	Faint algae	0.0	24.0	30.1	25.0	10.1	8.0	0.9	2.0	82.2	2.696	Sand/gravel	<5.8	25	25		
22	Iwai River Lower Reaches	Kozenji Bridge	Ichinoseki City	2019/5/6	Cloudy	17.6	0.6	12.9	3	Dark brown	None	0.0	0.0	0.0	0.1	15.4	75.3	2.3	6.9	70.1	2.725	Sand	<5.6	15	15		
				2019/8/6	Sunny	31.0	0.4	27.9	3	Dark brown	Faint swamp	0.0	32.1	17.9	5.8	18.9	21.3	1.6	2.4	80.7	2.779	Sand/gravel	<3.7	9.6	9.6		
23	Iwai River Lower Reaches	Kozenji Bridge	Ichinoseki City	2019/1/4	Sunny	12.2	0.6	13.1	3	Blackish brown	Faint phytoplankton	0.0	39.9	13.7	4.4	17.2	20.2	2.4	2.3	79.7	2.734	Sand/gravel	<4.4	28	28		
				2020/2/2	Sunny	6.2	0.4	4.6	3	Extremely dark brown	None	0.0	28.7	15.9	7.6	33.1	11.5	0.9	2.4	77.6	2.807	Sand/gravel	<4.0	6.3	6.3		

# Iwate River (Sediment) 2/2

R i v e r s	Location				Sampling Date	Weather	Air temperature (°C)	Water depth (m)	Sediment																Remarks	
	No.	Water area	Location	Municipality					General items										Sediment content				Activity concentration [Bq/kg(dry)]			
									Sediment temperature (°C)	Sample length (cm)	Color	Odor	Grain size distribution(%)				Silt	Clay	Sediment content (%)	Density (g/cm <sup>3</sup> )	Property	Radioactive cesium				
													Coarse gravel	Medium gravel	Fine gravel	Coarse sand						Medium sand	Fine sand	Cs-134		Cs-137
15	Sakei River	Unada Bridge	Chinoseki City	2019/5/10	Sunny	23.1	0.3	15.7	3	Dull yellowish brown	None	0.0	0.7	5.6	23.4	65.0	2.5	0.1	2.8	73.5	2.670	Sand	<3.5	20	20	
				2019/8/7	Sunny	32.2	0.4	24.4	3	Dull yellowish brown	Faint swamp	0.0	9.7	27.6	22.2	32.5	4.9	1.7	1.5	77.4	2.678	Sand/gravel	<4.7	17	17	
				2019/1/18	Cloudy	9.0	0.3	10.7	3	Dull yellowish brown	None	0.0	10.8	23.7	30.8	30.0	2.6	0.8	1.3	74.5	2.675	Sand/gravel	<5.5	21	21	
				2020/2/10	Sunny	2.5	0.3	3.8	2	Dull yellowish brown	None	0.0	6.9	28.5	38.8	21.7	1.7	0.0	2.5	78.2	2.680	Sand/gravel	<4.0	15	15	
				2019/5/10	Sunny	15.9	0.4	11.6	3	Dark brown	None	0.0	18.0	21.0	31.0	25.3	1.7	0.5	2.0	74.9	2.746	Sand/gravel	<4.6	49	49	
				2019/8/7	Sunny	27.3	0.5	18.8	3	Blackish brown	None	0.0	16.3	30.2	33.9	18.0	0.5	0.1	1.0	85.2	2.738	Sand/gravel	<4.0	19	19	
	16	Sarusawa River	Kannon Bridge	Chinoseki City	2019/1/18	Cloudy	9.2	0.4	10.2	3	Blackish brown	Faint swamp	0.0	19.2	22.5	33.3	21.9	0.8	0.6	1.7	81.1	2.782	Sand/gravel	<4.1	32	32
					2020/2/10	Sunny	-0.4	0.5	3.0	3	Dark brown	None	0.0	14.2	38.1	41.8	4.2	0.2	0.5	0.9	80.3	2.765	Sand/gravel	<4.8	27	27
					2019/5/10	Sunny	19.2	0.6	12.7	3	Dull yellowish brown	None	0.0	8.7	34.5	44.4	10.3	0.4	0.3	1.3	78.7	2.667	Sand/gravel	<3.5	4.9	4.9
					2019/8/7	Sunny	30.2	0.4	22.8	3	Dark olive brown	Faint algae	0.0	10.1	35.8	38.1	11.5	3.4	0.1	1.1	83.6	2.671	Sand/gravel	<3.3	9.6	9.6
					2019/1/18	Cloudy	9.0	0.6	9.8	3	Dull yellowish brown	None	0.0	5.1	25.7	66.7	1.0	0.0	0.1	1.3	79.6	2.672	Sand/gravel	<4.2	7.3	7.3
					2020/2/10	Sunny	0.7	0.6	3.3	3	Yellowish brown	None	0.0	1.0	20.5	71.3	4.7	0.2	0.8	1.5	78.9	2.674	Sand/gravel	<4.2	6.6	6.6
	17	Saitetsu River	Oide Bridge	Chinoseki City	2019/5/6	Sunny	22.1	0.5	14.9	3	Dull yellowish brown	None	0.0	0.0	0.0	0.7	38.1	46.9	6.9	7.4	69.2	2.733	Sand	<6.0	52	52
					2019/8/8	Sunny	31.5	0.5	24.1	3	Dark grayish yellow	Faint swamp	0.0	4.4	2.6	3.7	89.2	27.3	0.1	2.7	73.1	2.766	Sand	<4.6	7.9	7.9
					2019/1/13	Sunny	10.7	0.5	11.4	3	Dark olive brown	None	0.0	0.0	0.0	0.6	78.0	18.4	0.1	2.9	72.2	2.715	Sand	<4.9	6.8	6.8
					2020/2/8	Cloudy	0.6	0.4	3.8	3	Grayish olive	None	0.0	0.0	0.0	0.1	35.2	56.2	3.8	4.7	72.3	2.832	Sand	<5.2	21	21
					2019/5/10	Sunny	22.4	0.3	17.9	3	Dark brown	None	0.0	0.0	2.6	36.1	54.9	3.5	0.0	2.9	73.4	2.674	Sand	<5.5	25	25
					2019/8/7	Sunny	35.5	0.5	25.1	3	Dark brown	None	0.0	0.1	7.7	46.7	39.4	3.2	0.1	2.7	74.1	2.673	Sand	<4.3	28	28
	18	Kitakami River System	Kanzaki Bridge	Chinoseki City	2019/1/18	Cloudy	9.0	0.3	10.1	3	Brown	None	0.0	2.2	21.4	36.0	36.0	2.2	0.8	1.5	83.5	2.677	Sand/gravel	<4.6	22	22
					2020/2/6	Sunny	-2.2	0.3	3.4	3	Dark brown	None	0.0	0.7	28.6	45.3	21.0	2.4	0.0	2.1	81.2	2.672	Sand/gravel	<4.9	18	18
					2019/5/6	Cloudy	21.8	0.5	13.5	3	Olive black	Faint sewage	0.0	0.0	0.0	0.0	20.7	44.3	17.4	17.6	56.4	2.683	Silt	<7.7	35	35
					2019/8/8	Sunny	34.5	0.5	29.7	3	Blackish brown	None	0.0	27.5	14.0	6.9	43.8	6.1	0.0	1.7	80.3	2.759	Sand/gravel	<4.2	10	10
					2019/1/13	Cloudy	11.4	0.3	12.4	3	Blackish brown	Faint swamp	0.0	9.3	6.0	13.8	57.3	11.1	0.0	2.5	75.8	2.666	Sand/gravel	<4.0	9.9	9.9
					2020/2/3	Sunny	2.5	0.3	4.6	3	Dark brown	None	3.0	22.1	7.0	15.7	40.8	8.7	0.7	2.0	78.7	2.649	Sand/gravel	<4.8	7.0	7.0
19	Semaya River Upper Reaches	Miyata Bridge	Chinoseki City	2019/5/13	Sunny	19.3	0.5	15.1	3	Brown	Faint swamp	0.0	0.5	13.1	51.9	31.0	0.8	0.2	2.5	73.9	2.671	Sand	<4.8	15	15	
				2019/8/8	Sunny	33.7	0.4	25.2	3	Dull yellowish brown	None	0.0	0.5	8.3	59.1	29.0	0.5	0.0	2.7	80.2	2.669	Sand/gravel	<4.6	9.8	9.8	
				2019/1/13	Cloudy	16.0	0.4	12.3	3	Dull yellowish brown	None	0.0	3.0	11.1	59.7	23.5	0.9	0.2	1.7	81.5	2.683	Sand/gravel	<5.1	10	10	
				2020/2/3	Sunny	6.9	0.4	4.8	3	Yellowish brown	None	0.0	11.6	5.7	15.2	57.5	6.8	1.3	1.9	74.9	2.716	Sand/gravel	<4.2	13	13	
				2019/5/13	Sunny	23.4	0.3	18.8	3	Blackish brown	Faint phytoplankton	0.0	19.1	18.0	25.1	32.9	1.9	1.2	1.8	78.1	2.685	Sand/gravel	<3.9	34	34	
				2019/8/8	Sunny	36.3	0.2	32.6	3	Blackish brown	Faint swamp	0.0	21.0	13.2	16.0	41.5	5.1	1.3	1.9	79.1	2.740	Sand/gravel	<4.9	35	35	
20	Kitakami River	Kitakami-gawa Bridge	Chinoseki City	2019/1/16	Sunny	16.2	0.3	12.3	3	Blackish brown	None	0.0	23.0	16.5	19.0	35.3	3.9	0.7	1.7	79.3	2.711	Sand/gravel	<4.3	26	26	
				2020/2/3	Sunny	9.8	0.3	5.4	3	Blackish brown	None	0.0	21.7	16.8	26.1	30.6	2.5	0.4	2.0	79.3	2.741	Gravel/sand	<4.2	29	29	
				2019/5/13	Sunny	23.4	0.3	18.8	3	Blackish brown	Faint phytoplankton	0.0	19.1	18.0	25.1	32.9	1.9	1.2	1.8	78.1	2.685	Sand/gravel	<3.9	34	34	
				2019/8/8	Sunny	36.3	0.2	32.6	3	Blackish brown	Faint swamp	0.0	21.0	13.2	16.0	41.5	5.1	1.3	1.9	79.1	2.740	Sand/gravel	<4.9	35	35	
21	Kinomori River	Hiyoshi Bridge	Chinoseki City	2019/1/13	Cloudy	16.0	0.4	12.3	3	Dull yellowish brown	None	0.0	3.0	11.1	59.7	23.5	0.9	0.2	1.7	81.5	2.683	Sand/gravel	<5.1	10	10	
				2020/2/3	Sunny	6.9	0.4	4.8	3	Yellowish brown	None	0.0	11.6	5.7	15.2	57.5	6.8	1.3	1.9	74.9	2.716	Sand/gravel	<4.2	13	13	
22	Kiriyu River	Tenjin Bridge	Chinoseki City	2019/5/13	Sunny	23.4	0.3	18.8	3	Blackish brown	Faint phytoplankton	0.0	19.1	18.0	25.1	32.9	1.9	1.2	1.8	78.1	2.685	Sand/gravel	<3.9	34	34	
				2019/8/8	Sunny	36.3	0.2	32.6	3	Blackish brown	Faint swamp	0.0	21.0	13.2	16.0	41.5	5.1	1.3	1.9	79.1	2.740	Sand/gravel	<4.9	35	35	

# Iwate River (Surrounding Environment) 1/2

Location				Sampling Date	Weather	Air temperature (°C)	Surrounding Environment(Soil,Air dose)										Remarks							
							Left bank			Radioactive cesium			Air Dose (μSv/h)	Right bank				Radioactive cesium						
No.	Water area	Location	Municipality	Color	Odor	Property	Activity concentration [Bq/kg(dry)]			Color	Odor	Property		Activity concentration [Bq/kg(dry)]										
							Cs-134	Cs-137	Total				Cs-134	Cs-137	Total									
R i v e r s	1	Sakari River Lower Reaches	Sano Bridge	Ofunato City	2019/5/11	Sunny	14.7	Grayish yellowish brown	Faint earth	Loamy	<6.2	34	34	0.04	Blackish brown	Faint earth	Loamy	19	220	239	0.04			
					2019/11/9	Cloudy	12.0	Blackish brown	Faint earth	Loamy	<5.3	59	59	0.04	Blackish brown	Faint earth	Loamy	22	290	312	0.04			
	2	Kesen River	Aneha Bridge	Rikuzentakada City	2019/5/12	Sunny	15.6	Dull yellowish brown	Faint earth	Loamy	<4.0	4.3	4.3	0.04	Grayish yellowish brown	Faint earth	Loamy	<6.1	20	20	0.04			
					2019/11/10	Sunny	13.6	Dull yellowish brown	Faint earth	Loamy	<0.55	3.7	3.7	0.04	Dull yellowish brown	Faint earth	Loamy	<0.56	1.4	1.4	0.04			
	3	Okawa River	Prefectural border with Miyagi	Ichinoseki City	2019/5/10	Sunny	23.4	-	-	-	-	-	-	-	Blackish brown	Faint earth	Loamy	12	120	132	0.05	(Left bank) Soil not exposed		
					2019/8/10	Rain	21.1	-	-	-	-	-	-	-	-	-	Dark brown	Faint earth	Loamy	14	140	154	0.06	(Left bank) Soil not exposed
					2019/11/6	Sunny	16.0	-	-	-	-	-	-	-	-	-	Dark brown	Faint earth	Loamy	24	340	364	0.04	(Left bank) Soil not exposed
					2020/2/6	Sunny	-2.0	-	-	-	-	-	-	-	-	-	-	Blackish brown	Faint earth	Loamy	14	230	244	0.05
	4	Tsuayagawa River	Chiyogahara Bridge		2019/5/13	Sunny	14.4	Blackish brown	Faint earth	Loamy	32	440	472	0.06	Dark brown	Faint earth	Loamy	36	460	496	0.06			
					2019/11/11	Sunny	8.6	Dull yellowish brown	Faint earth	Loamy	14	200	214	0.07	Blackish brown	Faint earth	Loamy	78	1,100	1,178	0.07			
	5	Kurosawa River	Kawarada Bridge	Kanegasaki Town	2019/5/5	Sunny	26.4	Dark brown	Faint earth	Loamy	22	270	292	0.04	Blackish brown	Faint earth	Loamy	24	290	314	0.04			
					2019/11/1	Sunny	19.0	Blackish brown	Faint earth	Loamy	14	220	234	0.04	Blackish brown	Faint earth	Loamy	25	410	435	0.04			
	6	Isawa River	Oago Bridge	Oshu City	2019/5/5	Sunny	26.3	Dark brown	Faint earth	Loamy	12	140	152	0.04	Blackish brown	Faint earth	Loamy	15	170	185	0.04			
					2019/8/5	Sunny	28.8	Dark brown	Faint earth	Loamy	<4.6	63	63	0.05	Dark brown	Faint earth	Loamy	42	600	642	0.04			
					2019/11/1	Cloudy	14.4	Blackish brown	Faint earth	Loamy	8.4	130	138.4	0.05	Dark brown	Faint earth	Loamy	24	400	424	0.04			
					2020/2/9	Snow	-2.3	-	-	-	-	-	-	-	-	-	-	-	-	-	-	0.03	Unable to collect samples due to freeze.	
	7	Isawa River	Sajin Bridge	Oshu City	2019/5/5	Sunny	27.4	Blackish brown	Faint earth	Loamy	25	290	315	0.04	Dark brown	Faint earth	Loamy	27	320	347	0.04			
					2019/8/5	Sunny	34.4	Dark brown	Faint earth	Loamy	18	230	248	0.04	Brown	Faint earth	Loamy	19	290	309	0.04			
					2019/11/1	Sunny	18.4	Blackish brown	Faint earth	Loamy	26	360	386	0.04	Blackish brown	Faint earth	Loamy	18	230	248	0.04			
					2020/2/9	Sunny	-1.0	Blackish brown	Faint earth	Loamy	16	280	296	0.04	Blackish brown	Faint earth	Loamy	12	200	212	0.04			
	8	Kitakami River	Fuji Bridge	Oshu City	2019/5/8	Sunny	24.4	Blackish brown	Faint earth	Loamy	23	250	273	0.04	Grayish yellowish brown	Faint earth	Loamy	24	290	314	0.07			
					2019/8/5	Sunny	35.6	Blackish brown	Faint grass	Sandy	31	440	471	0.04	Dull yellowish brown	Faint earth	Loamy	26	290	316	0.05			
					2019/11/2	Sunny	17.3	Blackish brown	Faint earth	Sandy	15	210	225	0.04	Dark brown	Faint earth	Loamy	27	360	387	0.06			
					2020/2/9	Sunny	-1.8	Blackish brown	Faint earth	Loamy	12	190	202	0.04	Dull yellowish brown	Faint earth	Loamy	21	350	371	0.05			
	9	Shiratori River	Shiratori Bridge	Oshu City	2019/5/8	Sunny	23.8	Dark brown	Faint earth	Loamy	63	760	823	0.06	Blackish brown	Faint earth	Loamy	49	610	659	0.07			
					2019/8/5	Sunny	34.5	Brown	Faint earth	Loamy	24	390	414	0.07	Blackish brown	Faint earth	Loamy	32	390	422	0.06			
					2019/11/2	Sunny	15.0	Blackish brown	Faint earth	Loamy	40	550	590	0.06	Blackish brown	Faint earth	Loamy	47	710	757	0.06			
					2020/2/11	Sunny	3.0	Blackish brown	Faint earth	Loamy	31	520	551	0.05	Blackish brown	Faint earth	Loamy	35	490	525	0.05			
	10	Knakami River System	Koromo River	Koromogawa Bridge	Hiraizumi Town	2019/5/8	Sunny	21.2	Dull yellowish brown	Faint earth	Loamy	61	690	751	0.07	Dull yellowish brown	Faint earth	Loamy	27	300	327	0.07		
						2019/8/6	Sunny	36.8	Dull yellowish brown	Faint earth	Loamy	60	770	830	0.07	Dark brown	Faint earth	Loamy	28	450	478	0.06		
2019/11/2						Sunny	14.2	Dull yellowish brown	Faint earth	Loamy	51	760	811	0.06	Dark brown	Faint earth	Loamy	24	310	334	0.06			
2020/2/11						Cloudy	0.3	Blackish brown	Faint earth	Loamy	34	510	544	0.06	Blackish brown	Faint earth	Loamy	11	170	181	0.04			
11	Ota River	Hitosuji Bridge	Hiraizumi Town	2019/5/8	Sunny	18.3	Blackish brown	Faint earth	Clay-loamy	39	500	539	0.06	Blackish brown	Faint earth	Loamy	55	690	745	0.07				
				2019/8/6	Sunny	36.0	Blackish brown	Faint earth	Loamy	29	410	439	0.06	Dark brown	Faint earth	Loamy	50	610	660	0.05				
				2019/11/2	Sunny	9.3	Blackish brown	Faint earth	Loamy	51	760	811	0.06	Blackish brown	Faint earth	Loamy	36	530	566	0.06				
				2020/2/11	Sunny	-0.2	Blackish brown	Faint earth	Loamy	56	680	736	0.05	Blackish brown	Faint earth	Loamy	27	370	397	0.05				
12	Iwai River Middle Reaches	Kamino Bridge	Ichinoseki City	2019/5/7	Sunny	17.3	Blackish brown	Faint earth	Loamy	43	500	543	0.07	Blackish brown	Faint earth	Loamy	29	340	369	0.05				
				2019/8/4	Sunny	32.8	Dull yellowish brown	Faint earth	Loamy	62	780	842	0.07	Grayish yellowish brown	Faint earth	Loamy	28	400	428	0.05				
				2019/11/4	Sunny	7.0	Blackish brown	Faint earth	Loamy	61	1,000	1,061	0.07	Blackish brown	Faint earth	Loamy	14	170	184	0.05				
				2020/2/2	Sunny	3.6	Blackish brown	Faint earth	Loamy	23	400	423	0.06	Blackish brown	Faint earth	Loamy	14	230	244	0.05				
13	Iwai River Lower Reaches	Kozenji Bridge	Ichinoseki City	2019/5/6	Cloudy	19.4	Dark brown	Faint earth	Loamy	20	250	270	0.05	Dark brown	Faint earth	Loamy	23	280	303	0.05				
				2019/8/6	Sunny	28.9	Brown	Faint earth	Loamy	19	260	279	0.05	Dark brown	Faint earth	Loamy	19	240	259	0.05				
				2019/11/4	Sunny	11.8	Dark brown	Faint earth	Loamy	15	180	195	0.04	Dark brown	Faint earth	Loamy	<8.3	91	91	0.04				
				2020/2/2	Sunny	4.9	Dark brown	Faint earth	Loamy	18	260	278	0.05	Blackish brown	Faint earth	Loamy	<8.3	130	130	0.04				
14	Kitakami River	Chitose Bridge (Kozenji)	Ichinoseki City	2019/5/6	Cloudy	17.6	Dull yellowish brown	Faint earth	Loamy	27	280	307	0.04	Dull yellowish brown	Faint earth	Loamy	21	260	281	0.04				
				2019/8/6	Sunny	31.0	Dark brown	Faint earth	Loamy	17	210	227	0.04	Brown	Faint earth	Loamy	24	300	324	0.04				
				2019/11/4	Sunny	12.2	Dark brown	Faint earth	Loamy	19	240	259	0.04	Dark brown	Faint earth	Loamy	25	350	375	0.04				
				2020/2/2	Sunny	6.2	Blackish brown	Faint earth	Loamy	13	200	213	0.04	Blackish brown	Faint earth	Loamy	16	280	296	0.04				

# Iwate River (Surrounding Environment) 2/2

Location				Sampling Date	Weather	Air temperature (°C)	Surrounding Environment (Soil, Air dose)												Remarks															
No.	Water area	Location	Municipality				Left bank						Right bank																					
							Color	Odor	Property	Activity concentration [Bq/kg(dry)]			Air Dose (μSv/h)	Color	Odor	Property	Activity concentration [Bq/kg(dry)]																	
										Cs-134	Cs-137	Total					Cs-134	Cs-137		Total														
R i v e r s	15	Sokei River	Unada Bridge	Ichinoseki City	2019/5/10	Sunny	23.1	Blackish brown	Faint earth	Loamy	12	130	142	0.04	Dark brown	Faint earth	Loamy	15	180	195	0.05													
					2019/8/7	Sunny	32.2	Blackish brown	Faint earth	Loamy	40	540	580	0.04	Grayish yellowish brown	Faint earth	Loamy	8.3	88	96.3	0.05													
					2019/11/8	Cloudy	9.0	Blackish brown	Faint earth	Loamy	22	340	362	0.05	Dull yellowish brown	Faint earth	Loamy	11	180	191	0.04													
	16	Sarusawa River	Kannon Bridge	Ichinoseki City	2020/2/10	Sunny	2.5	Blackish brown	Faint earth	Loamy	14	220	234	0.04	Dark brown	Faint earth	Loamy	11	180	191	0.04													
					2019/5/10	Sunny	15.9	Black	Faint earth	Loamy	28	340	368	0.05	Blackish brown	Faint earth	Loamy	36	420	456	0.04													
					2019/8/7	Sunny	27.3	Black	Faint earth	Loamy	63	980	1,043	0.05	Blackish brown	Faint earth	Loamy	47	540	587	0.05													
	17	Satsesu River	Oide Bridge	Ichinoseki City	2019/11/8	Cloudy	9.2	Black	Faint earth	Loamy	68	1,100	1,168	0.06	Blackish brown	Faint earth	Loamy	42	670	712	0.05													
					2020/2/10	Sunny	-0.4	Blackish brown	Faint earth	Loamy	73	1,200	1,273	0.04	Dark brown	Faint earth	Loamy	28	470	498	0.04													
					2019/5/10	Sunny	19.2	Blackish brown	Faint earth	Loamy	7.9	100	107.9	0.04	Grayish yellowish brown	Faint earth	Loamy	46	540	586	0.05													
	18	Kitakami River System	Kanzaki Bridge	Ichinoseki City	2019/8/7	Sunny	30.2	Brown	Faint earth	Loamy	40	550	590	0.05	Dull yellowish brown	Faint earth	Loamy	58	750	808	0.05													
					2019/11/8	Cloudy	9.0	Dark brown	Faint earth	Loamy	40	570	610	0.04	Dark brown	Faint earth	Loamy	31	450	481	0.05													
					2020/2/10	Sunny	0.7	Blackish brown	Faint earth	Loamy	22	380	402	0.04	Blackish brown	Faint earth	Loamy	34	560	594	0.04													
	19	Semmaya River Upper Reaches	Miyata Bridge	Ichinoseki City	2019/5/6	Sunny	22.1	Blackish brown	Faint earth	Loamy	68	860	928	0.06	Dull yellowish brown	Faint earth	Loamy	40	490	530	0.07													
					2019/8/8	Sunny	31.5	Dull yellowish brown	Faint earth	Loamy	55	870	925	0.06	Dark brown	Faint earth	Loamy	43	610	653	0.06													
					2019/11/3	Sunny	10.7	Blackish brown	Faint earth	Loamy	33	560	593	0.06	Blackish brown	Faint earth	Loamy	56	740	796	0.06													
	20	Kitakami River	Kitakamigawa Bridge	Ichinoseki City	2020/2/8	Cloudy	0.6	Blackish brown	Faint earth	Loamy	52	790	842	0.07	Blackish brown	Faint earth	Loamy	39	600	639	0.05													
					2019/5/10	Sunny	22.4	Dark brown	Faint earth	Loamy	61	750	811	0.07	Dull yellowish brown	Faint earth	Loamy	24	280	304	0.06													
					2019/8/7	Sunny	35.5	Grayish yellowish brown	Faint earth	Loamy	31	470	501	0.06	Blackish brown	Faint earth	Loamy	32	520	552	0.06													
	21	Kinomi River	Higuuchi Bridge	Ichinoseki City	2019/11/8	Cloudy	9.0	Grayish yellowish brown	Faint earth	Loamy	30	410	440	0.06	Grayish yellowish brown	Faint earth	Loamy	21	350	371	0.06													
					2020/2/6	Sunny	-2.2	Blackish brown	Faint earth	Loamy	43	700	743	0.07	Blackish brown	Faint earth	Loamy	26	440	466	0.06													
					2019/5/6	Cloudy	21.8	Dark brown	Faint earth	Loamy	16	180	196	0.04	Dark brown	Faint earth	Loamy	25	290	315	0.05													
	22	Kinryu River	Tenjin Bridge	Ichinoseki City	2019/8/8	Sunny	34.5	Grayish yellowish brown	Faint earth	Loamy	23	300	323	0.05	Dark brown	Faint earth	Loamy	27	410	437	0.06													
					2019/11/3	Cloudy	11.4	Dark brown	Faint earth	Loamy	11	150	161	0.04	Dark brown	Faint earth	Loamy	40	540	580	0.05													
					2020/2/3	Sunny	2.5	Blackish brown	Faint earth	Loamy	12	150	162	0.04	Blackish brown	Faint earth	Loamy	17	290	307	0.05													
	2019/5/13	Sunny	19.3	Dull yellowish brown	Faint earth	Loamy	<6.4	91	91	0.04	Blackish brown	Faint earth	Loamy	<7.0	99	99	0.04																	
																		2019/8/8	Sunny	33.7	Dull yellow orange	Faint earth	Loamy	16	170	186	0.04	Dark brown	Faint earth	Loamy	7.7	110	117.7	0.04
																		2019/11/3	Cloudy	16.0	Dull yellowish brown	Faint earth	Loamy	13	200	213	0.04	Blackish brown	Faint earth	Loamy	<6.5	77	77	0.04
	2020/2/3	Sunny	6.9	Dull yellowish brown	Faint earth	Loamy	14	220	234	0.04	Blackish brown	Faint earth	Loamy	<8.2	86	86	0.04																	
2019/5/13																		Sunny	23.4	Dark brown	Faint earth	Loamy	42	580	622	0.07	Blackish brown	Faint earth	Loamy	43	630	673	0.07	
2019/8/8																		Sunny	36.3	Grayish yellowish brown	Faint earth	Loamy	47	620	667	0.07	Dark brown	Faint earth	Loamy	53	620	673	0.07	
2019/11/6	Sunny	16.2	Blackish brown	Faint earth	Loamy	49	700	749	0.06	Dark brown	Faint earth	Loamy	29	430	459	0.07																		
2020/2/3	Sunny	9.8	Blackish brown	Faint earth	Loamy	32	560	592	0.07	Blackish brown	Faint earth	Loamy	48	630	678	0.07																		

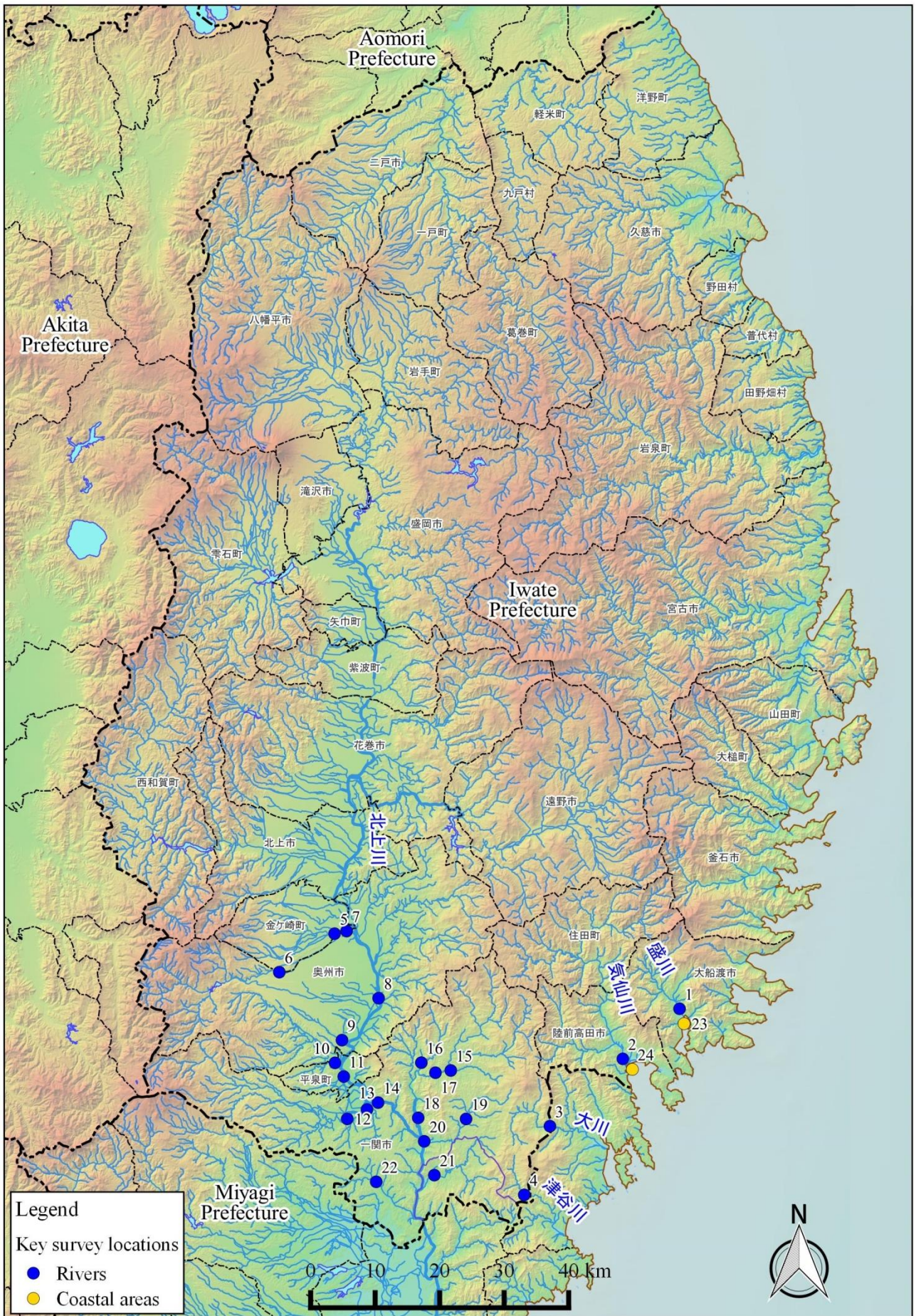
# Iwate Coastal(Water) 1/1

	Location			Sampling Date	Weather	Air temperature (°C)	Water depth (m)	Water								Remarks		
								General items							Activity concentration(Bq/L)			
	No.	Water area						Water temperature (°C)	Sampling depth (m)	Color	Odor	Secchi disk depth (m)	Salinity (‰)	SS (mg/L)	Turbidity (FNU)		Radioactive cesium	
																	Cs-134	Cs-137
Coastal areas	23	Ofunato Bay (A)	S-31	Surface layer	2019/5/22	Sunny	12.6	16.7	15.1	0.5	Dark grayish yellow green	None	4.0	21.0	2	1.5	<0.86	<0.90
				Deep layer					11.4	15.7	-	None		32.7	2	0.7	<0.60	<0.74
		Surface layer	2019/11/11	Cloudy	8.2	16.0	16.7	0.5	Dark grayish yellow green	None	6.5	31.6	2	0.6	<0.57	<0.82		
		Deep layer					16.1	15.0	-	None		31.5	2	0.8	<0.64	<0.79		
	24	Hirota Bay	S-34	Surface layer	2019/5/24	Sunny	23.5	11.5	13.4	0.5	Dark grayish yellowish green	None	2.5	27.0	4	2.8	<0.67	<0.74
				Deep layer					12.2	10.5	-	None		32.7	16	8.9	<0.86	<0.74
				Surface layer	2019/11/11	Cloudy	10.1	10.9	15.5	0.5	Dark grayish yellow green	None	7.5	30.9	2	0.5	<0.72	<0.60
				Deep layer					16.5	9.9	-	None		32.3	1	0.5	<0.88	<0.66



# Iwate Coastal (Sediment) 1/1

	Location		Sampling Date	Weather	Air temperature (°C)	Water depth (m)	Sediment																	Activity concentration [Bq/kg(dry)]			Remarks	
							No.	Water area	General items										Sediment content (%)	Density (g/cm <sup>3</sup> )	Property	Radioactive cesium						
	Sediment temperature (°C)	Sample length (cm)							Color	Odor	Grain size distribution(%)						Coarse sand	Medium sand				Fine sand	Silt	Clay	Cs-134	Cs-137		Total
											Coarse gravel	Medium gravel	Fine gravel	Coarse sand	Medium sand	Fine sand												
Coastal areas	23	Ofunato Bay (A)	S-31	5月22日	Sunny	12.6	16.7	9.1	8	Black	Faint sewage	0.0	0.1	0.3	0.3	1.8	14.6	40.8	42.2	44.8	2.602	Silt	<7.7	25	25			
				11月11日	Cloudy	8.2	16.0	16.8	5	Olive black	Faint hydrogen sulfide	0.0	0.1	0.4	1.1	7.9	17.8	41.4	31.3	53.5	2.621	Silt	<6.8	13	13			
	24	Hirota Bay	S-34	5月24日	Sunny	23.5	11.5	11.1	5	Black	None	0.0	0.5	0.4	7.3	77.9	10.6	0.3	2.9	74.9	2.720	Sand	<0.52	<0.50	-			
				11月11日	Cloudy	10.1	10.9	15.2	5	Olive black	None	0.0	0.1	0.3	6.5	77.1	12.1	1.1	2.9	75.1	2.723	Sand	<0.62	0.77	0.77			



Survey Locations (Iwate Prefecture)