

FY2018 Saitama Prefecture Survey Results

[Outline of results]

(1) Water

Rivers

Radioactive cesium (Cs-134, Cs-137): Not detectable at any location

(2) Sediments

Rivers

Cs-134: Not detectable at any location

Cs-137: 3.2 - 26 Bq/kg (dry)

(3) Surrounding Environment

(a) Soil

Rivers

Cs-134: ND - 31 Bq/kg (dry)

Cs-137: 22 - 270 Bq/kg (dry)

(b) Ambient dose rate

Rivers

0.04 - 0.07 μ Sv/h

Saitama River (Water) 1/1

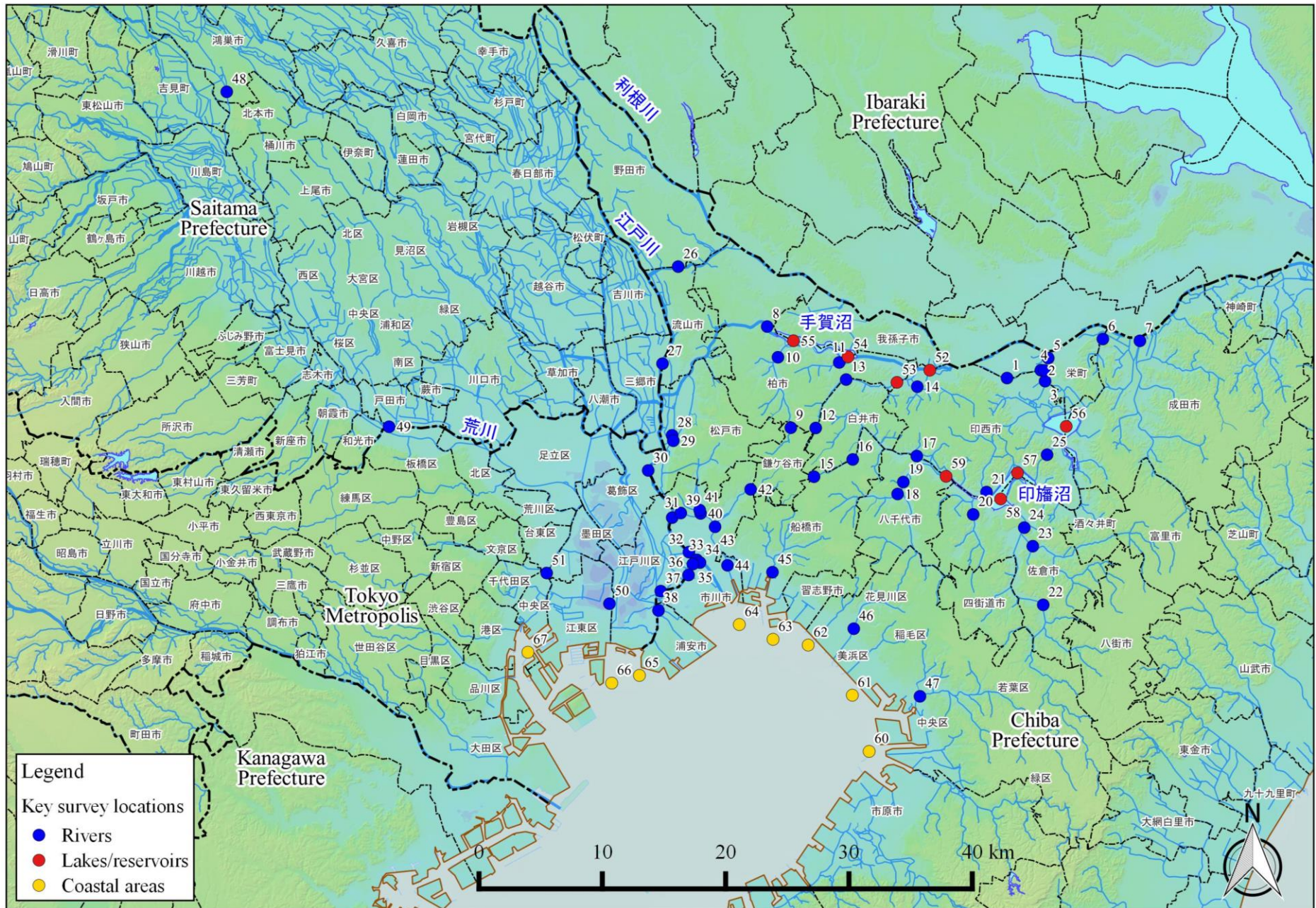
Location					Water														Remarks
No.	Water area	Location	Municipality	Sampling Date	Weather	Air temperature (°C)	Water depth (m)	General items							Activity concentration(Bq/L)				
								Water temperature (°C)	Sampling depth (m)	Color	Odor	Transparency (cm)	Electrical conductivity (mS/m)	SS (mg/L)	Turbidity (FNU)	Cs-134	Cs-137		
R i v e r s	48	Arakawa River Middle Reaches	Takimamuro Bridge	Konosu City	2018/5/8	Cloudy	15.0	2.2	14.4	0.0	Dark grayish yellow green	None	68	13.9	11	3.4	<0.65	<0.61	
					2018/8/17	Sunny	26.9	2.3	22.5	0.0	Grayish yellow green	None	33	17.5	12	7.4	<0.63	<0.54	
					2018/11/19	Sunny	17.9	2.6	14.7	0.0	Grayish yellow green	None	72	25.0	15	3.0	<0.67	<0.69	
					2019/1/22	Sunny	10.0	2.5	6.4	0.0	Grayish yellow green	None	75	22.8	4	2.5	<0.62	<0.75	
	49	Arakawa River Lower Reaches	Sasame Bridge	Toda City	2018/5/8	Cloudy	12.8	0.2	20.0	0.0	Dark grayish greenish yellow	Faint sewage	48	33.9	5	3.2	<0.76	<0.75	
					2018/8/17	Sunny	25.4	0.3	25.6	0.0	Grayish greenish yellow	Faint sewage	24	22.6	23	13	<0.52	<0.66	
					2018/11/19	Cloudy	18.0	0.3	19.1	0.0	Dark grayish yellow	Faint sewage	53	182	5	2.8	<0.63	<0.80	
					2019/1/22	Sunny	10.2	0.1	12.1	0.0	Grayish yellow	Faint sewage	65	1140	4	2.4	<0.67	<0.69	

Saitama River (Sediment) 1/1

R i v e r s	Location				Sampling Date	Weather	Air temperature (°C)	Water depth (m)	Sediment														Remarks									
	No.	Water area	Location	Municipality					Sediment temperature (°C)	Sample length (cm)	Color	Odor	General items								Sediment content (%)	Density (g/cm ³)		Property	Activity concentration [Bq/kg(dry)]							
													Grain size distribution(%)												Coarse sand	Medium sand	Fine sand	Silt	Clay	Radioactive cesium		
													Coarse gravel	Medium gravel	Fine gravel	Coarse sand	Medium sand	Fine sand	Silt	Clay										Cs-134	Cs-137	Total
48	Arakawa River System	Arakawa River Middle Reaches	Takimamuro Bridge	Konosu City	2018/5/8	Cloudy	15.0	2.2	14.9	4	Olive black	Faint algae	0.0	1.0	0.6	0.3	21.3	70.2	4.7	1.9	70.8	2.702	Sand/gravel	<4.2	6.5	6.5						
					2018/8/17	Sunny	26.9	2.3	22.0	3	Blackish brown	None	0.0	0.3	0.6	3.5	59.6	32.2	2.0	1.9	75.9	2.686	Sand	<2.9	3.2	3.2						
					2018/11/19	Sunny	17.9	2.6	14.0	3	Blackish brown	None	0.0	0.0	0.0	0.0	31.2	59.3	7.1	2.4	70.2	2.708	Sand	<5.5	6.1	6.1						
					2019/1/22	Sunny	10.0	2.5	5.8	2	Blackish brown	Faint algae	0.0	0.0	0.1	0.1	35.7	56.0	2.3	5.8	76.4	2.691	Sand	<5.7	7.1	7.1						
	49	Arakawa River Lower Reaches	Ssane Bridge	Toda City	2018/5/8	Cloudy	12.8	0.2	20.0	2	Blackish brown	None	13.3	50.5	9.3	5.4	13.6	4.9	2.3	0.9	77.7	2.721	Gravel/sand/silt	<5.3	15	15						
					2018/8/17	Sunny	25.4	0.3	22.1	1	Blackish brown	None	0.0	39.9	4.7	2.2	18.5	19.7	9.0	6.0	49.2	2.670	Gravel/sand/silt	<8.0	26	26						
					2018/11/19	Cloudy	18.0	0.3	17.0	1	Blackish brown	None	4.2	31.3	4.7	2.1	13.9	22.3	15.1	6.3	63.1	2.707	Gravel/sand/silt	<6.7	13	13						
					2019/1/22	Sunny	10.2	0.1	7.9	1	Blackish brown	None	14.4	48.3	8.5	3.6	12.4	9.2	1.8	1.8	81.6	2.778	Gravel/sand/silt	<4.5	7.2	7.2						

Saitama River (Surrounding Environment) 1/1

Location					Sampling Date	Weather	Air temperature (°C)	Surrounding Environment(Soil,Air dose)											Remarks			
								Left bank					Right bank									
No.	Water area	Location	Municipality			Color	Odor	Property	Activity concentration [Bq/kg(dry)]			Air Dose (μSv/h)	Color	Odor	Property	Activity concentration [Bq/kg(dry)]			Air Dose (μSv/h)			
									Radioactive cesium							Radioactive cesium						
						Cs-134	Cs-137	Total	Cs-134	Cs-137	Total			Cs-134	Cs-137	Total						
R i v e r s	48	Arakawa River Middle Reaches	Takimamuro Bridge	Konosu City	2018/5/8	Cloudy	15.0	Blackish brown	Faint earth	Loamy	<9.1	35	35	0.06	Blackish brown	Faint earth	Loamy	<5.9	29	29	0.06	
					2018/8/17	Sunny	26.9	Dark grayish yellow	Faint earth	Loamy	<8.5	35	35	0.07	Dark grayish yellow	Faint earth	Loamy	<7.8	22	22	0.06	
					2018/11/19	Sunny	17.9	Blackish brown	Faint earth	Loamy	<7.2	32	32	0.06	Grayish yellowish brown	Faint earth	Loamy	<5.9	40	40	0.06	
	49	Arakawa River Lower Reaches	Sasame Bridge	Toda City	2019/1/22	Sunny	10.0	Grayish yellowish brown	Faint earth	Loamy	<5.9	36	36	0.06	Dark grayish yellow	Faint earth	Loamy	<6.4	26	26	0.06	
					2018/5/8	Cloudy	12.8	Blackish brown	Faint earth	Loamy	31	200	231	0.04	Blackish brown	Faint earth	Loamy	14	96	110	0.05	
					2018/8/17	Sunny	25.4	Dull yellowish brown	Faint earth	Loamy	12	150	162	0.04	Grayish yellowish brown	Faint earth	Loamy	15	130	145	0.06	
						2018/1/19	Cloudy	18.0	Dark brown	Faint earth	Loamy	23	270	293	0.04	Blackish brown	Faint earth	Loamy	<6.9	80	80	0.06
						2019/1/22	Sunny	10.2	Dull yellowish brown	Faint earth	Loamy	22	240	262	0.04	Blackish brown	Faint earth	Loamy	8.1	95	103.1	0.05



Survey Locations (Chiba,Saitama,Tokyo Prefectures)