

FY2018 Chiba Prefecture Survey Results

[Outline of results]

(1) Water

Rivers

Radioactive cesium (Cs-134, Cs-137): Not detectable at any location

Lakes and reservoirs

Radioactive cesium (Cs-134, Cs-137): Not detectable at any location

Coastal areas

Radioactive cesium (Cs-134, Cs-137): Not detectable at any location

(2) Sediments

Rivers

Cs-134: ND - 170 Bq/kg (dry)

Cs-137: 7.2 - 1,800 Bq/kg (dry)

Lakes and reservoirs

Cs-134: ND - 200 Bq/kg (dry)

Cs-137: 110 - 2,200 Bq/kg (dry)

Coastal areas

Cs-134: Not detectable at any location

Cs-137: ND - 37 Bq/kg (dry)

(3) Surrounding Environment

(a) Soil

Rivers

Cs-134: ND - 350 Bq/kg (dry)

Cs-137: 2.9 - 3,700 Bq/kg (dry)

Lakes and reservoirs

Cs-134: 28 - 570 Bq/kg (dry)

Cs-137: 330 - 5,600 Bq/kg (dry)

(b) Ambient dose rate

Rivers

0.04 - 0.12 μ Sv/h

Lakes and reservoirs

0.05 - 0.11 μ Sv/h

Chiba River (Water) 1/4

No.	Location			Sampling Date	Weather	Air temperature (°C)	Water depth (m)	Water										Remarks
	Water area	Location	Municipality					General items							Activity concentration(Bq/L)			
								Water temperature (°C)	Sampling depth (m)	Color	Odor	Transparency (cm)	Electrical conductivity (mS/m)	SS (mg/L)	Turbidity (FNU)	Radioactive cesium Cs-134	Cs-137	
R i v e r s	Tonegawa River System	Shogon River	Fukama-chashi Bridge	Sakae Town	2018/5/24	Cloudy	22.6	2.2	23.0	0.0	Grayish yellow	None	24	27.0	12	10	<0.63	<0.63
					2018/8/14	Sunny	33.0	2.0	29.9	0.0	Grayish greenish yellow	None	31	25.6	10	7.3	<0.69	<0.69
					2018/11/12	Cloudy	20.0	2.0	18.2	0.0	Dark grayish greenish yellow	None	22	30.1	8	11	<0.75	<0.84
					2019/1/22	Sunny	11.5	1.7	6.2	0.0	Grayish yellow	None	23	34.1	8	8.1	<0.58	<0.84
					2018/5/30	Cloudy	23.9	1.4	24.5	0.0	Light grayish yellow	None	22	28.0	24	16	<0.77	<0.61
					2018/8/3	Sunny	31.5	1.4	32.0	0.0	Light grayish yellow	None	28	26.4	25	18	<0.66	<0.84
					2018/11/12	Cloudy	18.0	0.2	18.0	0.0	Grayish greenish yellow	None	25	28.5	13	12	<0.87	<0.96
		2019/1/22	Sunny		10.0	1.4	6.4	0.0	Dark grayish yellow	None	28	29.2	12	9.7	<0.67	<0.80		
		2018/5/30	Cloudy		24.0	0.4	24.5	0.0	Light grayish yellow	None	26	25.5	23	18	<0.87	<0.55		
		2018/8/3	Sunny		31.6	0.4	29.0	0.0	Light grayish yellow	Faint sewage	23	25.0	14	9.4	<0.71	<0.69		
		2018/11/14	Sunny		17.0	0.7	17.1	0.0	Dark grayish yellow	None	22	30.4	21	17	<0.66	<0.63		
		2019/1/22	Sunny		4.8	0.5	5.7	0.0	Grayish yellow	None	26	30.2	14	10	<0.76	<0.84		
		2018/5/30	Cloudy		23.5	0.3	24.5	0.0	Grayish yellow	None	27	27.7	17	13	<0.65	<0.69		
		2018/8/3	Sunny		32.4	0.2	32.5	0.0	Light grayish yellow	Faint sewage	32	22.8	10	7.4	<0.52	<0.75		
	2018/11/14	Sunny	16.0	0.2	16.5	0.0	Greenish yellowish dark gray	None	25	30.5	14	9.9	<0.59	<0.80				
	2019/1/22	Sunny	8.0	0.2	6.6	0.0	Grayish yellow	None	29	29.9	13	9.8	<0.55	<0.88				
	2018/5/30	Cloudy	24.0	0.5	24.5	0.0	Grayish greenish yellow	Faint sewage	33	25.8	13	9.4	<0.70	<0.70				
	2018/8/3	Sunny	29.0	1.6	30.5	0.0	Light grayish greenish yellow	Faint sewage	35	21.3	8	5.1	<0.69	<0.80				
	2018/11/14	Sunny	17.0	0.7	16.9	0.0	Grayish greenish yellow	Faint sewage	30	26.6	8	7.7	<0.69	<0.55				
	2019/1/22	Sunny	11.0	0.4	7.0	0.0	Grayish yellow	None	38	29.8	9	7.1	<0.67	<0.69				
	2018/5/30	Cloudy	26.6	0.3	23.2	0.0	Grayish reddish yellow	Faint sewage	25	46.7	34	12	<0.65	<0.88				
	2018/8/3	Sunny	28.0	0.1	26.3	0.0	Light grayish reddish yellow	Faint sewage	32	61.2	20	14	<0.74	<0.75				
	2018/11/14	Sunny	12.7	0.1	14.4	0.0	Grayish greenish yellow	None	23	125	20	15	<0.66	<0.75				
	2019/1/22	Sunny	3.5	0.1	7.0	0.0	Grayish yellow	None	25	182	16	13	<0.74	<0.84				
	2018/5/30	Cloudy	24.6	0.5	24.3	0.0	Light grayish greenish yellow	None	35	127	11	11	<0.56	<0.61				
	2018/8/2	Sunny	29.0	0.4	29.0	0.0	Grayish greenish yellow	None	29	113	9	8.2	<0.50	<0.70				
	2018/11/12	Cloudy	17.8	2.1	18.1	0.0	Dark grayish yellow green	None	45	28.3	6	5.3	<0.71	<0.84				
	2019/1/22	Sunny	3.5	0.5	5.4	0.0	Grayish yellow	None	32	32.3	11	7.0	<0.67	<0.96				
2018/5/11	Sunny	22.5	0.3	20.3	0.0	Light grayish yellow	Faint sewage	63	28.8	14	4.4	<0.68	<0.84					
2018/8/1	Sunny	32.8	0.4	28.0	0.0	Light grayish greenish yellow	Faint sewage	>100	33.9	6	3.2	<0.78	<0.69					
2018/11/12	Cloudy	13.8	0.2	16.5	0.0	Dark grayish yellow green	None	>100	44.9	3	2.0	<0.77	<0.97					
2019/1/21	Sunny	10.8	0.3	8.1	0.0	Grayish greenish yellow	None	82	35.8	5	3.8	<0.64	<0.69					
2018/5/11	Sunny	17.0	0.1	19.5	0.0	Light grayish greenish yellow	None	>100	37.5	3	2.0	<0.87	<0.80					
2018/8/6	Cloudy	25.8	0.2	23.8	0.0	Grayish yellow	Faint sewage	60	40.2	7	3.0	<0.74	<0.69					
2018/11/15	Sunny	13.8	0.2	15.2	0.0	Grayish greenish yellow	Faint sewage	55	38.8	16	5.6	<0.71	<0.71					
2019/1/21	Sunny	9.5	0.2	8.8	0.0	Light grayish yellow	Faint sewage	68	41.8	3	2.5	<0.88	<0.80					
2018/5/11	Sunny	19.5	0.8	19.6	0.0	Light grayish greenish yellow	None	24	38.2	25	27	<0.75	<0.84					
2018/8/1	Sunny	34.0	0.3	31.0	0.0	Light grayish greenish yellow	None	64	47.3	8	4.6	<0.56	<0.61					
2018/11/12	Cloudy	14.9	0.2	15.8	0.0	Dark grayish greenish yellow	None	64	50.9	9	4.1	<0.52	<0.87					
2019/1/21	Sunny	9.8	0.2	9.0	0.0	Grayish yellow green	None	62	79.8	8	4.2	<0.62	<0.75					
2018/5/24	Sunny	25.0	0.6	25.6	0.0	Light grayish greenish yellow	None	60	22.6	11	7.8	<0.66	<0.55					
2018/8/1	Sunny	36.0	0.7	33.5	0.0	Light grayish yellow	Faint sewage	36	31.9	10	6.0	<0.61	<0.63					
2018/11/12	Cloudy	15.5	0.5	15.6	0.0	Dark grayish greenish yellow	None	56	35.5	4	2.4	<0.69	<0.80					
2019/1/21	Sunny	8.5	0.4	10.0	0.0	Grayish yellow	None	83	36.0	5	2.7	<0.62	<0.84					
2018/5/11	Sunny	19.0	0.1	18.7	0.0	Light grayish greenish yellow	None	>100	42.6	2	1.6	<0.68	<0.63					
2018/8/6	Cloudy	26.0	0.1	23.3	0.0	Dark grayish yellow	Faint sewage	>100	38.6	2	2.0	<0.73	<0.66					
2018/11/15	Sunny	14.0	0.1	15.7	0.0	Light grayish yellow	None	>100	41.5	3	2.0	<0.56	<0.54					
2019/1/21	Sunny	7.5	0.1	12.5	0.0	Grayish yellow	None	>100	37.4	3	1.2	<0.62	<0.88					
2018/5/24	Sunny	25.8	0.5	23.1	0.0	Light grayish yellow	None	42	20.3	18	8.3	<0.73	<0.80					
2018/8/1	Sunny	32.2	0.5	31.5	0.0	Light grayish yellow	None	37	31.3	17	6.8	<0.61	<0.55					
2018/11/12	Cloudy	17.5	0.4	16.0	0.0	Grayish greenish yellow	None	64	36.6	8	3.4	<0.63	<0.80					
2019/1/22	Sunny	10.2	0.2	8.0	0.0	Light grayish yellow	None	>100	38.4	4	2.5	<0.66	<0.75					

Chiba River (Water) 3/4

No.	Location			Sampling Date	Weather	Air temperature (°C)	Water depth (m)	Water										Remarks
	Water area	Location	Municipality					General items						Activity concentration (Bq/L)				
								Water temperature (°C)	Sampling depth (m)	Color	Odor	Transparency (cm)	Electrical conductivity (mS/m)	SS (mg/L)	Turbidity (FNU)	Radioactive cesium Cs-134	Cs-137	
27	Edogawa River	Nagareyama Bridge	Nagareyama City /Misato City	2018/5/8	Cloudy	13.5	0.2	16.1	0.0	Dark grayish greenish yellow	None	43	15.7	16	5.8	<0.54	<0.80	
				2018/8/10	Sunny	33.5	0.2	27.0	0.0	Grayish yellow green	None	53	22.5	11	4.5	<0.61	<0.70	
				2018/11/19	Cloudy	13.2	0.3	13.5	0.0	Dark grayish yellow green	None	75	28.0	10	3.9	<0.69	<0.84	
				2019/1/22	Sunny	5.0	0.2	4.3	0.0	Grayish yellow green	None	>100	27.5	5	3.1	<0.81	<0.75	
	28	Sakagawa River	Benten Bridge	Matsudo City	2018/5/28	Cloudy	22.5	2.2	23.2	0.0	Light grayish greenish yellow	None	64	33.1	4	2.4	<0.75	<0.75
					2018/8/10	Cloudy	33.5	2.0	28.5	0.0	Grayish yellow green	None	51	27.9	6	4.5	<0.63	<0.80
					2018/1/13	Cloudy	16.5	2.1	17.3	0.0	Dark grayish green	Faint sewage	77	34.4	4	3.2	<0.85	<0.88
					2019/1/17	Sunny	13.1	2.1	11.0	0.0	Grayish yellow	Faint sewage	21	67.2	5	7.4	<0.71	<0.75
	29	Shinsaka River	Sakane Bridge	Matsudo City /Katsushika City	2018/5/28	Cloudy	23.6	0.6	23.0	0.0	Grayish greenish yellow	None	53	35.9	9	5.0	<0.75	<0.80
					2018/8/10	Cloudy	34.0	1.0	28.2	0.0	Grayish yellow green	None	59	25.5	5	3.6	<0.74	<0.55
					2018/11/13	Cloudy	16.8	1.1	18.0	0.0	Grayish yellow green	None	95	37.8	4	2.6	<0.63	<0.63
					2019/1/17	Sunny	11.8	0.5	8.9	0.0	Grayish yellow green	None	95	35.6	4	2.6	<0.76	<0.63
30	Edogawa River System	Shinkatsushika Bridge	Matsudo City /Katsushika City	2018/5/28	Cloudy	23.7	0.5	23.2	0.0	Light grayish greenish yellow	Faint swamp	48	20.7	9	5.2	<0.61	<0.80	
				2018/8/10	Cloudy	31.9	0.5	26.8	0.0	Dark grayish yellow green	None	64	20.6	5	3.1	<0.73	<0.69	
				2018/11/13	Cloudy	16.4	0.6	16.5	0.0	Dark grayish yellow green	None	84	27.9	3	3.1	<0.90	<0.84	
				2019/1/17	Sunny	11.6	0.4	7.1	0.0	Grayish yellow green	None	>100	25.6	3	2.7	<0.72	<0.80	
31	Edogawa River System	Ichikawa Bridge	Ichikawa City /Edogawa City	2018/5/31	Cloudy	19.9	0.8	22.2	0.0	Dark grayish yellow	None	46	20.9	10	5.9	<0.80	<0.80	
				2018/8/4	Sunny	33.0	0.5	31.0	0.0	Dark grayish yellow green	Faint fish	39	20.7	4	3.2	<0.69	<0.69	
				2018/11/13	Cloudy	15.9	0.5	17.0	0.0	Dark grayish yellow green	None	78	26.9	4	2.9	<0.70	<0.69	
				2019/1/17	Sunny	7.9	0.4	5.5	0.0	Dark grayish yellow green	None	85	37.0	5	3.3	<0.87	<0.88	
32	Edogawa River System	Vicinity of Keiyo Road	Ichikawa City /Edogawa City	2018/5/1	Sunny	28.9	4.0	20.4	0.0	Grayish yellow green	None	60	14.5	5	3.6	<0.71	<0.69	
				2018/8/29	Cloudy	28.2	3.2	26.9	0.0	Grayish greenish yellow	None	31	23.5	16	6.7	<0.66	<0.84	
				2018/11/26	Cloudy	17.5	3.2	13.1	0.0	Grayish yellow green	None	51	31.4	5	5.0	<0.72	<0.63	
				2019/1/18	Sunny	8.0	3.0	5.6	0.0	Grayish yellow green	None	65	31.9	4	3.1	<0.80	<0.69	
33	Edogawa River	Gyotoku Movable Weir (upper reaches)	Ichikawa City	2018/5/1	Sunny	29.1	4.0	21.4	0.0	Grayish yellow green	None	57	17.2	5	4.2	<0.65	<0.48	
				2018/6/5	Cloudy	28.5	3.2	24.2	0.0	Dark grayish yellow green	None	50	21.1	4	3.3	<0.84	<0.63	
				2018/7/3	Sunny	28.1	3.8	27.6	0.0	Grayish yellow	None	41	36.5	9	5.1	<0.66	<0.70	
				2018/8/29	Cloudy	27.3	3.3	27.9	0.0	Grayish yellow	None	31	26.2	8	5.7	<0.66	<0.75	
34	Edogawa River	Shingyotokubashi Bridge	Ichikawa City	2018/8/20	Cloudy	26.0	2.8	24.2	0.0	Dark grayish greenish yellow	None	50	40.5	5	3.9	<0.81	<0.63	
				2018/11/26	Cloudy	16.5	3.9	13.3	0.0	Grayish yellow	None	58	39.3	4	4.0	<0.77	<0.80	
				2019/1/18	Sunny	7.0	3.4	5.3	0.0	Grayish yellow green	None	49	43.6	5	3.0	<0.74	<0.80	
				2018/5/1	Sunny	27.0	0.3	22.1	0.0	Dark grayish yellow green	None	73	3,770	4	2.2	<0.47	<0.63	
35	Edogawa River	Edogawa Floodgate, down	Ichikawa City /Edogawa City	2018/8/29	Cloudy	28.0	0.4	28.9	0.0	Grayish yellow green	None	62	3,890	4	2.5	<0.49	<0.75	
				2018/11/26	Cloudy	19.1	0.2	14.6	0.0	Dark grayish greenish yellow	None	>100	4,500	3	1.7	<0.86	<0.69	
				2019/1/16	Sunny	10.0	0.3	9.2	0.0	Dark grayish yellow	None	75	4,700	7	2.9	<0.80	<0.92	
				2018/5/1	Sunny	28.7	6.9	19.1	0.0	Grayish yellow green	None	58	14.4	8	5.4	<0.77	<0.66	
36	Edogawa River	8 km Point to the estuary	Ichikawa City /Edogawa City	2018/8/29	Cloudy	27.5	6.8	27.1	0.0	Grayish yellow	None	24	23.9	30	13	<0.76	<0.80	
				2018/11/26	Sunny	16.0	6.4	14.8	0.0	Dark grayish greenish yellow	None	90	835	4	5.2	<0.84	<0.80	
				2019/1/18	Sunny	7.8	7.8	9.0	0.0	Dark grayish yellow green	None	80	2,130	3	1.6	<0.80	<0.84	
				2018/5/1	Sunny	28.7	3.1	19.8	0.0	Grayish yellow green	None	56	18.2	5	3.7	<0.73	<0.75	
36	Edogawa River	8 km Point to the estuary	Ichikawa City /Edogawa City	2018/8/29	Cloudy	26.5	4.5	27.1	0.0	Light grayish yellow	None	26	23.8	28	12	<0.69	<0.75	
				2018/11/26	Sunny	15.5	2.8	14.9	0.0	Grayish greenish yellow	None	66	892	4	5.2	<0.75	<0.88	
36	Edogawa River	8 km Point to the estuary	Ichikawa City /Edogawa City	2019/1/18	Sunny	7.1	4.4	9.1	0.0	Dark grayish yellow green	None	90	1,540	2	1.5	<0.70	<0.75	

Chiba River (Surrounding Environment) 3/4

Location				Sampling Date	Weather	Air temperature (°C)	Surrounding Environment(Soil,Air dose)													Remarks									
No.	Water area	Location	Municipality				Color	Odor	Property	Left bank			Right bank			Air Dose (µSv/h)	Color	Odor	Property		Activity concentration [Bq/kg(dry)]			Air Dose (µSv/h)					
										Radioactive cesium			Radioactive cesium								Cs-134	Cs-137	Total		Cs-134	Cs-137	Total		
R i v e r s	Edogawa River System	Edogawa River	Nagareyama Bridge	Nagareyama City /Misoto City	2018/5/8	Cloudy	13.5	Blackish brown	Faint earth	Loamy	110	970	1,080	0.09	Dark brown	Faint earth	Loamy	20	190	210	0.07								
					2018/8/10	Sunny	33.5	Blackish brown	Faint earth	Loamy	75	770	845	0.10	Dark brown	Faint earth	Loamy	31	380	411	0.08								
					2018/11/19	Cloudy	13.2	Dark brown	Faint earth	Loamy	58	670	728	0.10	Dark brown	Faint earth	Loamy	22	240	262	0.08								
					2019/1/22	Sunny	5.0	Dull yellowish brown	Faint earth	Loamy	76	830	906	0.09	Blackish brown	Faint earth	Loamy	28	310	338	0.07								
		28	Sakagawa River	Benten Bridge	Matsudo City	2018/5/28	Cloudy	22.5	-	-	-	-	-	-	-	0.08	-	-	-	-	-	-	-	0.07	Soil not exposed				
						2018/8/10	Cloudy	33.5	-	-	-	-	-	-	-	-	-	-	0.07	-	-	-	-	-	-	0.06	Soil not exposed		
						2018/1/13	Cloudy	16.5	-	-	-	-	-	-	-	-	-	-	0.07	-	-	-	-	-	-	-	0.06	Soil not exposed	
						2019/1/17	Sunny	13.1	-	-	-	-	-	-	-	-	-	-	0.06	-	-	-	-	-	-	-	-	0.06	Soil not exposed
		29	Shinsaka River	Sakane Bridge	Matsudo City	2018/5/28	Cloudy	23.6	-	-	-	-	-	-	-	-	0.06	-	-	-	-	-	-	-	-	0.06	Soil not exposed		
						2018/8/10	Cloudy	34.0	-	-	-	-	-	-	-	-	-	-	0.06	-	-	-	-	-	-	-	0.06	Soil not exposed	
						2018/11/13	Cloudy	16.8	-	-	-	-	-	-	-	-	-	-	0.06	-	-	-	-	-	-	-	-	0.05	Soil not exposed
						2019/1/17	Sunny	11.8	-	-	-	-	-	-	-	-	-	-	0.06	-	-	-	-	-	-	-	-	-	0.05
	30	Edogawa River System	Shinkatsushika Bridge	Matsudo City /Katsushika City	2018/5/28	Cloudy	23.7	Dark brown	Faint earth	Loamy	16	240	256	0.08	Dark brown	Faint earth	Loamy	53	710	763	0.08								
					2018/8/10	Cloudy	31.9	Dark brown	Faint earth	Loamy	49	490	539	0.08	Dark brown	Faint earth	Loamy	56	550	606	0.08								
					2018/11/13	Cloudy	16.4	Blackish brown	Faint earth	Loamy	39	420	459	0.07	Dark brown	Faint earth	Loamy	80	920	1,000	0.07								
					2019/1/17	Sunny	11.6	Grayish yellowish brown	Faint earth	Loamy	40	470	510	0.08	Dark brown	Faint earth	Loamy	91	900	991	0.07								
	31	Edogawa River System	Ichikawa Bridge	Ichikawa City /Edogawa City	2018/5/31	Cloudy	19.9	Blackish brown	Faint earth	Loamy	43	390	433	0.07	Dark brown	Faint earth	Loamy	230	2,300	2,530	0.10								
					2018/8/4	Sunny	33.0	Brown	Faint earth	Loamy	30	320	350	0.07	Dull yellowish brown	Faint earth	Loamy	65	660	725	0.10								
					2018/11/13	Cloudy	15.9	Dark brown	Faint earth	Loamy	38	410	448	0.07	Blackish brown	Faint earth	Loamy	97	1,100	1,197	0.09								
					2019/1/17	Sunny	7.9	Blackish brown	Faint earth	Clay-loamy	34	410	444	0.07	Dark brown	Faint earth	Loamy	89	1,100	1,189	0.10								
	32	Edogawa River System	Edogawa River	Vicinity of Keiyo Road	Ichikawa City	2018/5/1	Sunny	28.9	Dull yellowish brown	Faint earth	Loamy	46	460	506	0.08	Blackish brown	Faint earth	Loamy	31	310	341	0.07							
						2018/8/29	Cloudy	28.2	Dull yellowish brown	Faint earth	Loamy	44	440	484	0.08	Blackish brown	Faint earth	Loamy	24	280	304	0.08							
						2018/11/26	Cloudy	17.5	Dark brown	Faint earth	Loamy	46	490	536	0.07	Blackish brown	Faint earth	Loamy	29	330	359	0.08							
						2019/1/18	Sunny	8.0	Dark brown	Faint earth	Loamy	60	690	750	0.07	Blackish brown	Faint earth	Loamy	22	300	322	0.06							
	33	Edogawa River System	Edogawa River	Gyotoku Movable Weir (upper reaches)	Ichikawa City	2018/5/1	Sunny	29.1	Grayish yellowish brown	Faint earth	Loamy	47	430	477	0.07	Grayish yellowish brown	Faint earth	Loamy	38	390	428	0.07							
						2018/6/5	Cloudy	28.5	Grayish yellowish brown	Faint earth	Loamy	28	420	448	0.07	Grayish yellowish brown	Faint earth	Loamy	44	440	484	0.06							
						2018/7/3	Sunny	28.1	Dull yellowish brown	Faint earth	Loamy	35	330	365	0.07	Dull yellowish brown	Faint earth	Loamy	43	390	433	0.07							
						2018/8/29	Cloudy	27.3	Grayish yellowish brown	Faint earth	Loamy	35	410	445	0.08	Grayish yellowish brown	Faint earth	Loamy	37	390	427	0.08							
	34	Edogawa River System	Edogawa River	Shingyotokubashi Bridge	Ichikawa City	2018/9/20	Cloudy	26.0	Blackish brown	Faint earth	Loamy	35	410	445	0.07	Blackish brown	Faint earth	Loamy	30	370	400	0.07							
						2018/11/26	Cloudy	16.5	Dark brown	Faint earth	Loamy	24	280	304	0.07	Blackish brown	Faint earth	Loamy	27	310	337	0.07							
						2019/1/18	Sunny	7.0	Blackish brown	Faint earth	Loamy	21	240	261	0.07	Blackish brown	Faint earth	Loamy	36	340	376	0.07							
						2018/5/1	Sunny	27.0	Dull yellowish brown	Faint earth	Loamy	17	100	117	0.06	Dull yellowish brown	Faint earth	Loamy	10	52	62	0.06							
	35	Edogawa River System	Edogawa River	Edogawa Floodgate, down	Ichikawa City /Edogawa City	2018/8/29	Cloudy	28.0	Dull yellowish brown	Faint earth	Loamy	14	150	164	0.07	Grayish yellowish brown	Faint earth	Loamy	<7.0	55	55	0.06							
						2018/11/26	Cloudy	19.1	Dark brown	Faint earth	Loamy	13	160	173	0.05	Blackish brown	Faint earth	Loamy	<7.0	76	76	0.05							
						2019/1/16	Sunny	10.0	Dull yellowish brown	Faint earth	Loamy	12	120	132	0.07	Dark brown	Faint earth	Loamy	<10	62	62	0.05							
						2018/5/1	Sunny	28.7	Grayish yellowish brown	Faint earth	Loamy	230	2,200	2,430	0.10	Blackish brown	Faint earth	Loamy	27	270	297	0.06							
	36	Edogawa River System	Edogawa River	8 km Point to the estuary	Ichikawa City /Edogawa City	2018/8/29	Cloudy	27.5	Grayish yellowish brown	Faint earth	Loamy	120	1,400	1,520	0.10	Grayish yellowish brown	Faint earth	Loamy	24	310	334	0.08							
						2018/11/26	Sunny	16.0	Blackish brown	Faint earth	Loamy	170	2,000	2,170	0.09	Blackish brown	Faint earth	Loamy	27	330	357	0.06							
						2019/1/18	Sunny	7.8	Blackish brown	Faint earth	Loamy	160	1,800	1,960	0.09	Blackish brown	Faint earth	Loamy	17	240	257	0.06							
						2018/5/1	Sunny	28.7	Dark brown	Faint earth	Loamy	110	1,000	1,110	0.07	Grayish yellowish brown	Faint earth	Loamy	54	470	524	0.08							
	36	Edogawa River System	Edogawa River	8 km Point to the estuary	Ichikawa City /Edogawa City	2018/8/29	Cloudy	26.5	Dull yellowish brown	Faint earth	Loamy	60	550	610	0.08	Grayish yellowish brown	Faint earth	Loamy	45	500	545	0.09							
						2018/11/26	Sunny	15.5	Blackish brown	Faint earth	Loamy	50	570	620	0.07	Dark brown	Faint earth	Loamy	55	590	645	0.09							
	36	Edogawa River System	Edogawa River	8 km Point to the estuary	Ichikawa City /Edogawa City	2019/1/18	Sunny	7.1	Blackish brown	Faint earth	Loamy	91	1,200	1,291	0.06	Blackish brown	Faint earth	Loamy	43	570	613	0.08							

Chiba Lakes and Reservoirs (Water) 1/2

No.	Location		Sampling Date	Weather	Air temperature (°C)	Water depth (m)	Water									Remarks			
	Water area	Location					General items				Activity concentration(Bq/L)								
							Water temperature (°C)	Sampling depth (m)	Color	Odor	Secchi disk depth (m)	Electrical conductivity (mS/m)	SS (mg/L)	Turbidity (FNU)	Radioactive cesium				
												Cs-134	Cs-137						
L a k e s a n d R e s e r v o i r s	52	Fusashita	Surface layer	2018/6/20	Cloudy	20.4	2.6	21.9	0.5	Grayish yellow green	None	0.4	27.9	36	19	<0.56	<0.79		
			Deep layer					21.9	1.6	-	None		27.9	38	22	<0.72	<0.60		
			Surface layer	2018/9/27	Cloudy	18.5	2.4	19.4	0.5	Dark grayish greenish yellow	None	0.5	25.3	21	14	<0.63	<0.71		
			Deep layer					19.5	1.4	-	None		25.3	27	15	<0.84	<0.82		
			Surface layer	2018/12/14	Sunny	8.8	2.3	7.1	0.5	Grayish yellow	None	0.5	35.0	18	9.9	<0.69	<0.84		
			Deep layer					7.0	1.3	-	None		35.0	17	9.4	<0.69	<0.88		
		53	Center area of Shimoteganuma	Surface layer	2019/2/26	Cloudy	9.5	2.3	10.3	0.5	Grayish yellow	None	0.4	37.2	30	23	<0.79	<0.55	
				Deep layer					10.3	1.3	-	None		37.2	30	22	<0.63	<0.75	
				Surface layer	2018/6/20	Rain	20.4	1.7	22.2	0.5	Grayish yellow green	None	0.4	28.4	39	29	<0.66	<0.70	
				Deep layer					-	-	-	-	-	-	-	-	-	-	Unable to collect samples from the deep layer due to shallow water
				Surface layer	2018/9/27	Rain	17.8	1.6	18.6	0.5	Grayish greenish yellow	None	0.5	26.1	23	17	<0.84	<0.54	
				Deep layer					-	-	-	-	-	-	-	-	-	-	Unable to collect samples from the deep layer due to shallow water
	54		Center area of Teganuma	Surface layer	2018/12/14	Sunny	8.2	1.5	6.5	0.5	Grayish yellow	None	0.5	30.7	23	17	<0.52	<0.69	
				Deep layer					-	-	-	-	-	-	-	-	-	Unable to collect samples from the deep layer due to shallow water	
				Surface layer	2019/2/26	Cloudy	9.8	1.2	10.4	0.5	Grayish yellow	None	0.4	27.8	35	24	<0.70	<0.80	
				Deep layer					-	-	-	-	-	-	-	-	-	-	Unable to collect samples from the deep layer due to shallow water
				Surface layer	2018/6/20	Cloudy	20.0	1.6	22.0	0.5	Grayish yellow green	None	0.5	26.9	35	20	<0.75	<0.66	
				Deep layer					-	-	-	-	-	-	-	-	-	-	Unable to collect samples from the deep layer due to shallow water
	55	Nedoshita	Surface layer	2018/9/27	Cloudy	18.2	1.4	18.9	0.5	Grayish yellow	None	0.5	22.9	18	11	<0.72	<0.60		
			Deep layer					-	-	-	-	-	-	-	-	-	-	Unable to collect samples from the deep layer due to shallow water	
			Surface layer	2018/12/14	Sunny	8.5	1.3	7.1	0.5	Grayish yellow	None	0.4	31.4	62	25	<0.78	<0.55		
			Deep layer					-	-	-	-	-	-	-	-	-	-	Unable to collect samples from the deep layer due to shallow water	
			Surface layer	2019/2/26	Cloudy	9.8	1.3	10.0	0.5	Grayish yellow	None	0.5	37.3	31	22	<0.80	<0.69		
			Deep layer					-	-	-	-	-	-	-	-	-	-	Unable to collect samples from the deep layer due to shallow water	
		56	Center area of Kita-Inbanuma	Surface layer	2018/6/20	Cloudy	20.3	2.2	21.6	0.5	Dark grayish greenish yellow	None	0.6	27.5	16	9.2	<0.80	<0.66	
				Deep layer					21.6	1.2	-	None		27.9	16	9.7	<0.77	<0.66	
				Surface layer	2018/9/27	Cloudy	18.2	1.9	19.4	0.5	Grayish yellow	None	1.0	20.5	7	5.1	<0.77	<0.75	
				Deep layer					-	-	-	-	-	-	-	-	-	-	Unable to collect samples from the deep layer due to shallow water
Surface layer				2018/12/14	Sunny	9.5	1.7	7.5	0.5	Grayish greenish yellow	None	1.4	28.1	6	3.7	<0.52	<0.96		
57			Ipponmatsushita	Deep layer						-	-	-	-	-	-	-	-	-	Unable to collect samples from the deep layer due to shallow water
	Surface layer			2019/2/26	Cloudy	10.8	1.8	10.5	0.5	Grayish yellow	None	0.8	34.3	14	10	<0.63	<0.85		
	Deep layer							-	-	-	-	-	-	-	-	-	-	Unable to collect samples from the deep layer due to shallow water	
	Surface layer			2018/6/20	Rain	20.1	1.7	21.7	0.5	Grayish yellow	None	0.3	26.0	60	45	<0.86	<0.47		
	Deep layer							-	-	-	-	-	-	-	-	-	-	Unable to collect samples from the deep layer due to shallow water	
56	Center area of Kita-Inbanuma	Surface layer	2018/9/27	Cloudy	17.2	1.4	19.4	0.5	Grayish yellow	None	0.4	28.0	38	17	<0.75	<0.71			
		Deep layer					-	-	-	-	-	-	-	-	-	-	Unable to collect samples from the deep layer due to shallow water		
		Surface layer	2018/12/14	Sunny	5.8	1.4	6.8	0.5	Grayish yellow	None	0.8	33.0	11	9.0	<0.60	<0.69			
		Deep layer					-	-	-	-	-	-	-	-	-	-	Unable to collect samples from the deep layer due to shallow water		
		Surface layer	2019/2/15	Cloudy	3.0	1.4	4.7	0.5	Grayish yellow	None	0.6	36.6	21	16	<0.73	<0.69			
	57	Ipponmatsushita	Deep layer						-	-	-	-	-	-	-	-	-	Unable to collect samples from the deep layer due to shallow water	
			Surface layer	2018/6/20	Rain	20.1	1.7	21.5	0.5	Dark grayish yellow	None	0.5	27.7	29	18	<0.80	<0.54		
			Deep layer					-	-	-	-	-	-	-	-	-	-	Unable to collect samples from the deep layer due to shallow water	
			Surface layer	2018/9/27	Cloudy	17.0	1.6	19.0	0.5	Grayish yellow	None	0.4	25.2	41	19	<0.83	<0.75		
			Deep layer					-	-	-	-	-	-	-	-	-	-	Unable to collect samples from the deep layer due to shallow water	
57	Ipponmatsushita	Surface layer	2018/12/14	Sunny	5.5	1.4	7.1	0.5	Light grayish yellow	None	0.7	30.4	19	11	<0.72	<0.84			
		Deep layer					-	-	-	-	-	-	-	-	-	-	Unable to collect samples from the deep layer due to shallow water		
		Surface layer	2019/2/15	Cloudy	3.7	1.4	4.9	0.5	Dark grayish yellow	None	0.6	32.3	28	17	<0.74	<0.63			
		Deep layer					-	-	-	-	-	-	-	-	-	-	Unable to collect samples from the deep layer due to shallow water		
		Surface layer	2019/2/15	Cloudy	3.7	1.4	4.9	0.5	Dark grayish yellow	None	0.6	32.3	28	17	<0.74	<0.63			

Chiba Lakes and Reservoirs (Water) 2/2

L a k e s a n d R e s e r v o i r s	Location			Sampling Date	Weather	Air temperature (°C)	Water depth (m)	Water								Remarks				
	No.	Water area	Location					General items				Activity concentration(Bq/L)								
								Water temperature (°C)	Sampling depth (m)	Color	Odor	Secchi disk depth (m)	Electrical conductivity (mS/m)	SS (mg/L)	Turbidity (FNU)		Radioactive cesium			
																	Cs-134	Cs-137		
58	Lake Inbanuma	Lower area of Josuido water intake	Surface layer	2018/6/20	Rain	20.4	1.6	21.7	0.5	Dark grayish yellow	None	0.4	27.2	34	22	<0.66	<0.71			
			Deep layer						-	-	-	-	-	-	-	-	-	-	Unable to collect samples from the deep layer due to shallow water	
			Surface layer	2018/9/27	Cloudy	17.5	1.6	18.1	0.5	Grayish yellow	None	0.5	23.0	20	12	<0.84	<0.60			
			Deep layer						-	-	-	-	-	-	-	-	-	-	Unable to collect samples from the deep layer due to shallow water	
			Surface layer	2018/12/14	Sunny	6.2	1.5	6.9	0.5	Grayish yellow	None	0.7	34.3	18	9.2	<0.82	<0.69			
			Deep layer						-	-	-	-	-	-	-	-	-	-	Unable to collect samples from the deep layer due to shallow water	
		Surface layer	2019/2/15	Cloudy	3.7	1.4	4.7	0.5	Dark grayish reddish yellow	None	0.6	33.0	31	23	<0.86	<0.75				
		Deep layer							-	-	-	-	-	-	-	-	-	-	Unable to collect samples from the deep layer due to shallow water	
		59	Lake Inbanuma	Asobashi Bridge	Surface layer	2018/6/20	Rain	20.0	2.0	22.0	0.5	Dark grayish yellow	None	0.6	26.0	14	8.5	<0.80	<0.79	
					Deep layer						22.0	1.0	-	None	-	25.9	14	8.4	<0.82	<0.47
Surface layer	2018/9/27				Cloudy	18.0	1.6	19.0	0.5	Grayish yellow	None	0.0	29.5	22	10	<0.84	<0.60			
Deep layer									-	-	-	-	-	-	-	-	-	-	Unable to collect samples from the deep layer due to shallow water	
Surface layer	2018/12/14				Sunny	7.8	1.5	8.2	0.5	Grayish yellow	None	0.6	37.4	19	8.9	<0.74	<0.80			
Deep layer									-	-	-	-	-	-	-	-	-	-	Unable to collect samples from the deep layer due to shallow water	
Surface layer	2019/2/15	Cloudy	3.8	1.6	5.7	0.5	Dark grayish reddish yellow	None	0.6	38.4	18	11	<0.66	<0.69						
Deep layer							-	-	-	-	-	-	-	-	-	-	Unable to collect samples from the deep layer due to shallow water			

Chiba Lakes and Reservoirs (Sediment) 1/1

Location			Sampling Date	Weather	Air temperature (°C)	Water depth (m)	Sediment																	Activity concentration [Bq/kg(dry)]			Remarks
							Sediment temperature (°C)	Sample length (cm)	Color	Odor	General items									Sediment content (%)	Density (g/cm ³)	Property					
											Grain size distribution(%)																
											Coarse gravel	Medium gravel	Fine gravel	Coarse sand	Medium sand	Fine sand	Silt	Clay									
No.	Water area	Location																		Cs-134	Cs-137	Total					
L a k e s R e s e r v o i r s	52	Fusashita	2018/6/20	Cloudy	20.4	2.6	21.0	2	Olive black	Faint sewage	0.0	1.4	0.6	0.6	20.6	55.0	13.8	8.0	57.5	2.674	Sand/silt	32	310	342			
			2018/9/27	Cloudy	18.5	2.4	21.3	5	Olive black	Faint sewage	0.0	0.0	0.1	0.1	12.3	64.7	14.5	8.4	55.6	2.646	Silt/sand	31	330	361			
			2018/12/14	Sunny	8.8	2.3	8.5	10	Olive black	Faint sewage	0.0	0.0	0.0	0.0	10.0	64.4	15.4	10.3	49.6	2.661	Silt	30	370	400			
			2019/2/26	Cloudy	9.5	2.3	10.0	8	Olive black	None	0.0	0.9	0.8	0.9	30.0	55.1	3.1	9.1	59.1	2.703	Sand/silt	29	310	339			
	53	Center area of Shimoteganuma	2018/6/20	Rain	20.4	1.7	21.0	10	Olive black	Faint sewage	0.0	0.0	0.0	0.2	6.2	47.3	27.1	19.3	38.2	2.600	Silt/sand	49	360	409			
			2018/9/27	Rain	17.8	1.6	20.5	10	Olive black	Faint sewage	0.0	0.0	0.0	0.3	9.0	51.4	28.7	10.6	45.2	2.598	Silt/sand	18	250	268			
			2018/12/14	Sunny	8.2	1.5	9.0	10	Olive black	Faint sewage	0.0	0.0	0.0	0.1	4.5	41.8	35.7	17.9	30.3	2.598	Silt	39	400	439			
			2019/2/26	Cloudy	9.8	1.2	10.5	8	Olive black	Faint sewage	0.0	0.0	0.0	0.0	3.0	43.4	32.5	21.0	36.0	2.561	Silt	35	340	375			
	54	Center area of Tegama	2018/6/20	Cloudy	20.0	1.6	20.9	10	Olive black	Faint sewage	0.0	0.0	0.0	0.1	3.9	10.2	55.5	30.3	26.1	2.476	Silt	79	790	779			
			2018/9/27	Cloudy	18.2	1.4	22.2	10	Olive black	Faint sewage	0.0	0.0	0.0	0.0	0.7	10.4	62.4	26.4	23.4	2.424	Silt	62	680	742			
			2018/12/14	Sunny	8.5	1.3	9.4	10	Olive black	None	0.0	0.0	0.0	0.0	0.6	8.1	62.5	28.9	22.5	2.481	Silt	78	750	828			
			2019/2/26	Cloudy	9.8	1.3	10.0	10	Olive black	Faint sewage	0.0	0.0	0.0	0.0	0.3	8.4	63.4	28.0	27.1	2.461	Silt	52	600	652			
	55	Nedoshita	2018/6/20	Cloudy	20.3	2.2	20.6	10	Olive black	Faint sewage	0.0	0.0	0.0	0.0	0.4	7.1	55.1	37.4	29.7	2.426	Silt	200	2,200	2,400			
			2018/9/27	Cloudy	18.2	1.9	20.0	10	Olive black	Faint sewage	0.0	0.0	0.0	0.0	0.1	7.1	61.5	31.4	27.8	2.432	Silt	170	2,100	2,270			
			2018/12/14	Sunny	9.5	1.7	9.8	10	Olive black	None	0.0	0.0	0.0	0.1	0.7	8.4	64.8	26.1	27.3	2.464	Silt	190	1,900	2,090			
			2019/2/26	Cloudy	10.8	1.8	10.2	8	Olive black	Faint sewage	0.0	0.0	0.0	0.1	0.3	12.2	53.5	34.0	28.1	2.445	Silt	190	2,200	2,390			
	56	Center area of Kita-Inbanuma	2018/6/20	Rain	20.3	1.6	20.8	10	Olive black	Faint hydrogen sulfide	0.0	0.0	0.0	0.0	0.2	0.9	61.8	37.1	21.9	2.442	Silt	22	270	292			
			2018/9/27	Cloudy	17.2	1.4	22.0	10	Olive black	Faint earth	0.0	0.0	0.0	0.0	0.4	2.2	66.7	30.6	20.8	2.441	Silt	29	280	309			
			2018/12/14	Sunny	5.8	1.4	10.0	10	Olive black	Faint hydrogen sulfide	0.0	0.0	0.0	0.0	0.4	0.7	65.3	33.7	20.6	2.481	Silt	<33	240	240			
			2019/2/15	Cloudy	3.0	1.4	5.0	10	Olive black	Faint earth	0.0	0.0	0.0	0.0	0.2	1.0	68.8	30.0	19.7	2.497	Silt	31	310	341			
	57	Ipponmatsushita	2018/6/20	Rain	20.1	1.7	19.4	10	Olive black	Faint sewage	0.0	0.0	0.0	0.1	2.3	10.1	55.8	31.8	23.0	2.461	Silt	32	240	272			
			2018/9/27	Cloudy	17.0	1.6	21.5	10	Olive black	Faint earth	0.0	0.0	0.0	0.0	0.8	7.5	64.3	27.4	21.9	2.437	Silt	35	300	335			
			2018/12/14	Sunny	5.5	1.4	9.9	10	Olive black	Faint swamp	0.0	0.0	0.0	0.1	1.7	11.1	69.4	17.7	21.7	2.490	Silt	<38	300	300			
			2019/2/15	Cloudy	3.7	1.4	5.0	10	Olive black	None	0.0	0.0	0.0	0.1	0.3	5.1	72.4	22.1	19.9	2.494	Silt	30	290	320			
	58	Lower area of Josiido water intake	2018/6/20	Rain	20.4	1.6	20.8	10	Olive black	Faint sewage	0.0	0.0	0.0	0.0	0.4	19.3	56.5	23.8	26.1	2.478	Silt	39	380	419			
			2018/9/27	Cloudy	17.5	1.6	21.0	10	Olive black	Faint earth	0.0	0.0	0.0	0.1	5.7	64.3	29.9	24.2	2.397	Silt	33	370	403				
			2018/12/14	Sunny	6.2	1.5	9.2	10	Olive black	Faint hydrogen sulfide	0.0	0.0	0.0	0.0	0.2	9.7	67.8	22.4	22.9	2.452	Silt	<32	370	370			
			2019/2/15	Cloudy	3.7	1.4	5.0	10	Olive black	None	0.0	0.0	0.0	0.0	0.4	15.9	64.5	19.3	22.8	2.522	Silt	30	340	370			
59	Asobashi Bralge	2018/6/20	Rain	20.0	2.0	19.3	3	Olive black	Faint sewage	0.0	0.0	0.0	0.5	32.6	56.8	4.8	5.3	70.3	2.645	Sand/silt	11	110	121				
		2018/9/27	Cloudy	18.0	1.6	20.8	3	Olive black	Faint sewage	0.0	0.0	0.0	0.1	17.9	62.2	11.5	8.3	53.7	2.588	Sand/silt	12	140	152				
		2018/12/14	Sunny	7.8	1.5	9.0	3	Olive black	Faint sewage	0.0	0.0	0.0	0.1	17.2	64.3	10.1	8.3	65.2	2.649	Sand/silt	12	150	162				
		2019/2/15	Cloudy	3.8	1.6	5.0	4	Olive black	None	0.0	0.0	0.2	0.2	19.0	70.0	3.7	6.9	63.6	2.690	Sand/silt	18	200	218				

Chiba Lakes and Reservoirs (Surrounding Environment) 1/1

Location			Sampling Date	Weather	Air temperature (°C)	Surrounding Environment(Soil,Air dose)							Remarks		
						Soil				Air Dose (μSv/h)					
No.	Water area	Location				General items			Activity concentration [Bq/kg(dry)]			Air Dose (μSv/h)			
						Color	Odor	Property	Radioactive cesium						
									Cs-134	Cs-137	Total				
L a k e s a n d R e s e r v o i r s	52	Fusashita	2018/6/20	Cloudy	20.4	-	-	-	-	-	-	-	No sampling soil location		
			2018/9/27	Cloudy	18.5	-	-	-	-	-	-	-	No sampling soil location		
			2018/12/14	Sunny	8.8	-	-	-	-	-	-	-	-	No sampling soil location	
			2019/2/26	Cloudy	9.5	-	-	-	-	-	-	-	-	No sampling soil location	
	53	Lake Teganuma	Center area of Shimoteganuma	2018/6/20	Rain	20.4	Blackish brown	Faint earth	Loamy	95	1,100	1,195	0.07		
				2018/9/27	Rain	17.8	Blackish brown	Faint earth	Loamy	86	870	956	0.07		
				2018/12/14	Sunny	8.2	Blackish brown	Faint earth	Loamy	120	1,200	1,320	0.06		
				2019/2/26	Cloudy	9.8	Blackish brown	Faint earth	Loamy	90	1,100	1,190	0.05		
	54	Lake Teganuma	Center area of Teganuma	2018/6/20	Cloudy	20.0	-	-	-	-	-	-	-	No sampling soil location	
				2018/9/27	Cloudy	18.2	-	-	-	-	-	-	-	-	No sampling soil location
				2018/12/14	Sunny	8.5	-	-	-	-	-	-	-	-	No sampling soil location
				2019/2/26	Cloudy	9.8	-	-	-	-	-	-	-	-	No sampling soil location
	55	Lake Teganuma	Nedoshita	2018/6/20	Cloudy	20.3	Extremely dark brown	Faint earth	Loamy	570	5,600	6,170	0.11		
				2018/9/27	Cloudy	18.2	Extremely dark brown	Faint earth	Loamy	480	4,600	5,080	0.10		
				2018/12/14	Sunny	9.5	Extremely dark brown	Faint earth	Loamy	400	4,900	5,300	0.10		
				2019/2/26	Cloudy	10.8	Extremely dark brown	Faint earth	Loamy	350	4,100	4,450	0.08		
56	Lake Inbanuma	Center area of Kita-Inbanuma	2018/6/20	Rain	20.3	Blackish brown	Faint earth	Loamy	46	460	506	0.08			
			2018/9/27	Cloudy	17.2	Blackish brown	Faint earth	Loamy	28	330	358	0.07			
			2018/12/14	Sunny	5.8	Blackish brown	Faint earth	Loamy	36	410	446	0.07			
			2019/2/15	Cloudy	3.0	Blackish brown	Faint earth	Loamy	30	350	380	0.07			
57	Lake Inbanuma	Ipponmatsushita	2018/6/20	Rain	20.1	-	-	-	-	-	-	-	No sampling soil location		
			2018/9/27	Cloudy	17.0	-	-	-	-	-	-	-	-	No sampling soil location	
			2018/12/14	Sunny	5.5	-	-	-	-	-	-	-	-	No sampling soil location	
			2019/2/15	Cloudy	3.7	-	-	-	-	-	-	-	-	No sampling soil location	
58	Lake Inbanuma	Lower area of Josuido water intake	2018/6/20	Rain	20.4	-	-	-	-	-	-	-	No sampling soil location		
			2018/9/27	Cloudy	17.5	-	-	-	-	-	-	-	-	No sampling soil location	
			2018/12/14	Sunny	6.2	-	-	-	-	-	-	-	-	No sampling soil location	
			2019/2/15	Cloudy	3.7	-	-	-	-	-	-	-	-	No sampling soil location	
59	Lake Inbanuma	Asobashi Bridge	2018/6/20	Rain	20.0	Blackish brown	Faint earth	Loamy	94	1,100	1,194	0.06			
			2018/9/27	Cloudy	18.0	Blackish brown	Faint earth	Loamy	78	780	858	0.06			
			2018/12/14	Sunny	7.8	Blackish brown	Faint earth	Loamy	66	740	806	0.06			
			2019/2/15	Cloudy	3.8	Dark brown	Faint earth	Loamy	52	700	752	0.05			

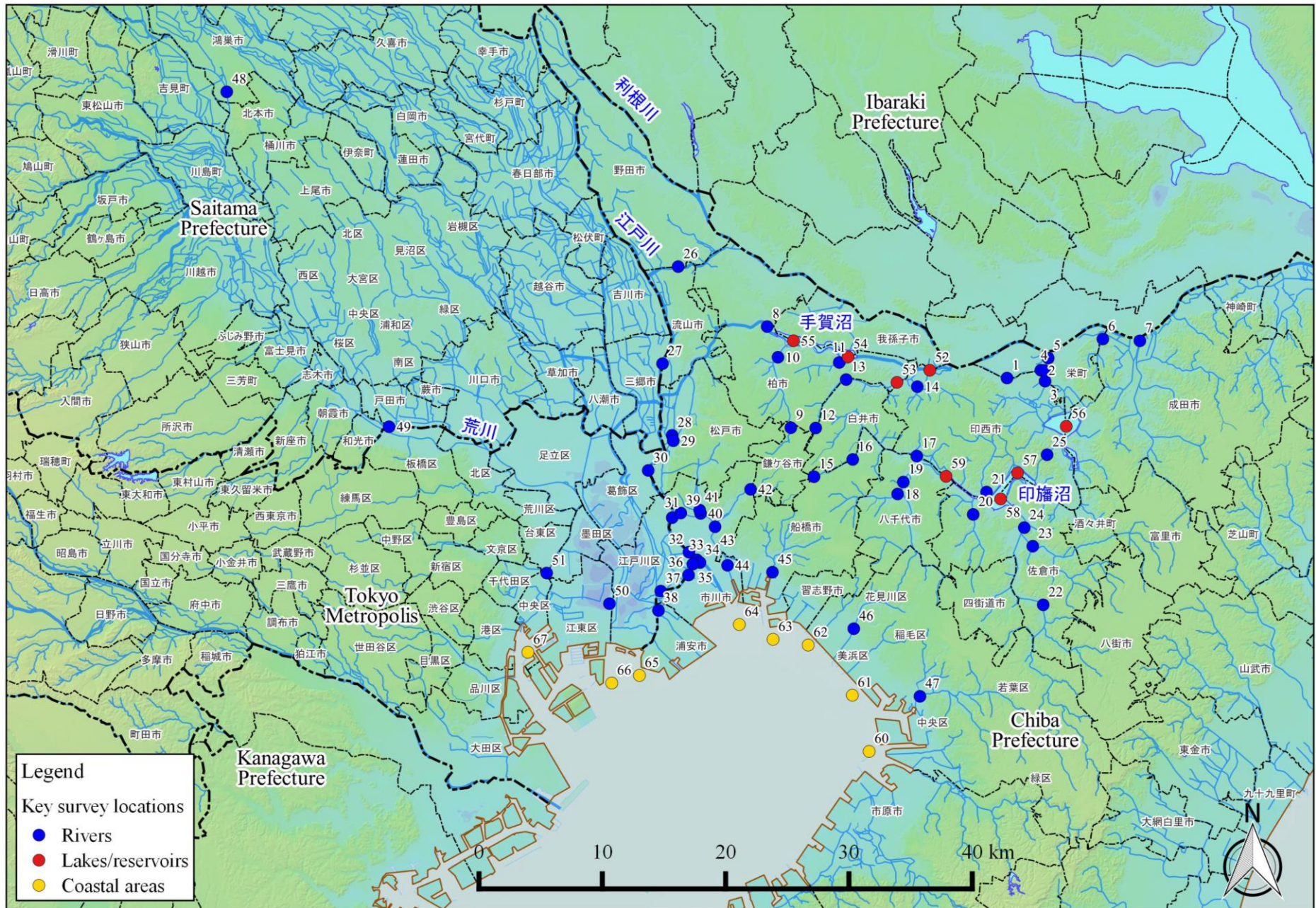
Chiba Coastal (Water) 1/1

Location				Sampling Date	Weather	Air temperature (°C)	Water depth (m)	Water								Activity concentration(Bq/L)		Remarks		
								General items				Secchi disk depth (m)	Salinity (‰)	SS (mg/L)	Turbidity (FNU)				Radioactive cesium	
No.	Water area			Water temperature (°C)	Sampling depth (m)	Color	Odor			Cs-134	Cs-137									
60	Tokyo Bay 7	Offshore of Yorogawa River Estuary	Surface layer	2018/6/22	Cloudy	24.1	10.6	21.5	0.5	Yellow greenish dark gray	None	2.5	25.6	3	1.8	<0.58	<0.80			
			Deep layer					19.6	9.6	-	None		30.2	3	1.4	<0.81	<0.84			
			Surface layer	2018/9/19	Sunny	25.6	10.4	25.5	0.5	Dark grayish yellow green	None	3.8	27.7	1	1.0	<0.75	<0.84			
			Deep layer					23.2	9.4	-	None		30.1	1	0.9	<0.59	<0.75			
			Surface layer	2018/12/20	Sunny	11.5	10.9	14.6	0.5	Dark grayish yellow green	None	4.8	28.8	4	1.4	<0.59	<0.84			
			Deep layer					12.9	9.9	-	None		29.8	4	2.2	<0.76	<0.80			
			Surface layer	2019/2/19	Cloudy	9.1	10.0	11.6	0.5	Yellow greenish dark gray	None	2.5	31.0	4	2.6	<0.68	<0.75			
			Deep layer					9.0	9.0	-	None		31.4	4	3.0	<0.68	<0.88			
			61	Tokyo Bay 5	Offshore of Miyako River Estuary	Surface layer	2018/6/22	Cloudy	24.3	8.6	22.2	0.5	Dark grayish yellow green	None	2.2	23.5	3	1.9	<0.94	<0.92
						Deep layer					20.9	7.6	-	None		29.3	3	0.9	<0.67	<0.75
						Surface layer	2018/9/19	Sunny	25.8	8.6	25.0	0.5	Dark grayish yellow green	None	3.7	28.3	1	0.6	<0.69	<0.88
						Deep layer					23.7	7.6	-	None		29.5	1	0.5	<0.82	<0.84
Surface layer	2018/12/20	Sunny				11.0	8.8	13.1	0.5	Dark grayish yellow green	None	3.5	29.5	1	0.9	<0.71	<0.92			
Deep layer								13.3	7.8	-	None		29.8	2	1.4	<0.81	<0.84			
Surface layer	2019/2/19	Cloudy				9.1	8.3	10.4	0.5	Yellow greenish dark gray	None	2.5	30.6	2	2.1	<0.81	<0.80			
Deep layer								9.1	7.3	-	None		31.4	4	2.5	<0.78	<0.80			
62	Coastal sea area of Makuhari	Offshore of Inbanuma Discharge Channel				Surface layer	2018/6/22	Cloudy	25.0	5.8	22.2	0.5	Dark grayish yellow green	Faint sewage	2.0	24.6	2	1.4	<0.68	<0.75
						Deep layer					21.4	4.8	-	None		28.3	2	1.1	<0.65	<0.75
			Surface layer	2018/7/10	Sunny	30.0	5.0	28.5	0.5	Reddish yellowish black	None	0.7	19.7	4	4.7	<0.52	<0.75			
			Deep layer					27.2	4.0	-	None		23.5	1	1.2	<0.56	<0.66			
			Surface layer	2018/8/21	Sunny	28.8	5.3	28.2	0.5	Dark grayish yellow green	Faint sewage	2.2	23.1	1	1.0	<0.63	<0.80			
			Deep layer					26.3	4.3	-	None		30.5	5	2.3	<0.82	<0.63			
			Surface layer	2018/9/19	Sunny	25.8	6.0	25.7	0.5	Dark grayish reddish yellow	None	1.6	26.5	2	1.2	<0.63	<0.85			
			Deep layer					24.4	5.0	-	None		29.3	1	0.5	<0.70	<0.63			
			Surface layer	2018/10/22	Sunny	22.2	6.5	21.3	0.5	Dark grayish yellow green	None	3.4	27.2	1	1.1	<0.82	<0.80			
			Deep layer					20.0	5.5	-	None		30.0	2	1.2	<0.73	<0.80			
			Surface layer	2018/12/20	Sunny	11.5	5.7	13.8	0.5	Dark grayish yellow green	Faint sewage	3.8	26.0	2	1.4	<0.76	<0.75			
			Deep layer					13.0	4.7	-	None		29.6	2	1.2	<0.78	<0.75			
			Surface layer	2019/2/19	Cloudy	9.2	5.7	10.4	0.5	Greenish yellowish dark gray	None	2.5	27.9	5	3.1	<0.77	<0.69			
			Deep layer					9.2	4.7	-	None		31.0	4	2.7	<0.60	<0.80			
63	Approx. 1km offshore of Ebigawa River Estuary	Coastal area of Keiyo Port (Ebigawa River Estuary)	Surface layer	2018/6/22	Cloudy	24.4	6.8	22.1	0.5	Yellow greenish dark gray	Faint sewage	2.5	25.6	1	0.8	<0.76	<0.80			
			Deep layer					20.5	5.8	-	None		29.6	3	1.1	<0.76	<0.80			
			Surface layer	2018/9/19	Sunny	24.5	6.7	25.4	0.5	Dark grayish reddish yellow	None	1.4	24.7	3	1.8	<0.64	<0.66			
			Deep layer					24.4	5.7	-	None		28.8	1	0.9	<0.78	<0.71			
			Surface layer	2018/12/20	Sunny	11.0	6.9	12.0	0.5	Dark grayish yellow green	None	3.5	29.5	2	1.1	<0.52	<0.69			
			Deep layer					12.1	5.9	-	None		29.5	2	0.9	<0.71	<0.88			
			Surface layer	2019/2/19	Cloudy	8.3	6.6	8.2	0.5	Greenish yellowish dark gray	None	2.2	30.6	3	2.1	<0.69	<0.80			
			Deep layer					8.2	5.6	-	None		31.4	4	2.1	<0.85	<0.75			
64	Approx. 1km offshore of Edogawa River Estuary	Coastal area of Keiyo Port (Edogawa River Estuary)	Surface layer	2018/6/22	Sunny	23.7	3.6	22.6	0.5	Dark grayish yellow green	None	1.9	26.9	2	1.3	<0.74	<0.84			
			Deep layer					22.5	2.6	-	None		26.9	2	1.2	<0.68	<0.84			
			Surface layer	2018/9/19	Sunny	24.5	4.4	25.4	0.5	Grayish yellow	None	1.6	24.7	3	1.9	<0.83	<0.61			
			Deep layer					25.3	3.4	-	None		24.9	2	1.3	<0.78	<0.82			
			Surface layer	2018/12/20	Sunny	10.5	7.0	11.2	0.5	Dark grayish yellow green	None	2.7	28.9	3	1.4	<0.88	<0.84			
			Deep layer					11.4	6.0	-	None		29.4	3	1.7	<0.76	<0.75			
			Surface layer	2019/2/19	Cloudy	8.1	3.6	8.1	0.5	Yellowish dark gray	None	2.0	31.1	4	2.3	<0.75	<0.80			
			Deep layer					8.1	2.6	-	None		31.1	5	2.2	<0.74	<0.84			

C o a s t a l a r e a s

Chiba Coastal (Sediment) 1/1

Location		Sampling Date	Weather	Air temperature (°C)	Water depth (m)	Sediment																	Activity concentration (Bq/kg(dry))			Remarks
						General items										Grain size distribution(%)				Sediment content		Density	Property	Radioactive cesium		
No.	Water area					Sediment temperature (°C)	Sample length (cm)	Color	Odor	Coarse gravel	Medium gravel	Fine gravel	Coarse sand	Medium sand	Fine sand	Silt	Clay	(%)	(%)	(g/cm ³)		Cs-134	Cs-137	Total		
C o a s t a l s e d i m e n t	60 Tokyo Bay 7	Offshore of Yotogawa River Estuary	2018/6/22	Cloudy	24.1	10.6	18.3	5	Olive black	None	0.0	0.9	0.5	0.9	0.6	2.8	57.0	37.4	41.4	2.687	Silt	<1.2	2.1	2.1		
			2018/9/19	Sunny	25.6	10.4	24.0	7	Blackish brown	Faint hydrogen sulfide	0.0	1.8	0.1	0.3	0.6	4.4	49.2	43.7	39.4	2.653	Silt	<1.2	<1.6	-		
			2018/12/20	Sunny	11.5	10.9	13.8	5	Olive black	None	0.0	4.0	0.1	0.4	0.4	9.2	51.0	35.0	36.7	2.679	Silt	<1.3	1.8	1.8		
			2019/2/19	Cloudy	9.1	10.0	8.2	4	Olive black	None	0.0	2.4	0.3	0.9	1.6	8.1	46.9	39.9	40.7	2.678	Silt	<1.2	1.4	1.4		
	61 Tokyo Bay 5	Offshore of Miyako River Estuary	2018/6/22	Cloudy	24.3	8.6	18.8	7	Olive black	None	0.0	1.6	1.0	0.8	4.0	11.0	52.7	28.9	46.5	2.678	Silt	<6.5	6.2	6.2		
			2018/9/19	Sunny	25.8	8.6	24.2	4	Olive black	Medium rotteness	0.0	2.2	0.6	1.4	3.7	8.4	48.1	35.7	42.9	2.632	Silt/sand	<1.5	<1.6	-		
			2018/12/20	Sunny	11.0	8.8	14.0	4	Olive black	None	0.9	3.4	1.0	1.7	7.1	34.9	31.1	19.9	50.4	2.699	Silt/sand	<1.4	1.5	1.5		
			2019/2/19	Cloudy	9.1	8.3	8.5	4	Olive black	None	1.7	3.9	0.8	1.8	15.9	28.2	25.5	22.3	51.1	2.702	Silt/sand	<0.85	1.4	1.4		
	62 Coastal sea area of Makuhari	Offshore of Ibanuma Discharge Channel	2018/6/22	Cloudy	25.0	5.8	19.1	7	Black	Medium hydrogen sulfide	0.0	0.0	0.0	0.0	0.2	3.4	79.2	17.3	55.5	2.652	Silt/sand	<7.0	37	37		
			2018/7/10	Sunny	30.0	5.0	26.0	6	Olive black	Faint hydrogen sulfide	0.0	0.0	0.0	0.1	7.3	79.8	12.7	52.3	2.661	Sand/silt	<9.2	21	21			
			2018/8/21	Sunny	28.8	5.3	25.0	5	Olive black	Faint hydrogen sulfide	0.0	0.0	0.0	0.0	6.3	82.9	10.7	62.9	2.635	Silt/sand	<6.6	26	26			
			2018/9/19	Sunny	25.8	6.0	25.2	5	Blackish brown	Faint hydrogen sulfide	0.0	0.0	0.0	0.1	6.7	79.6	13.5	62.7	2.628	Silt/sand	<1.0	18	18			
			2018/10/22	Sunny	22.2	6.5	21.0	5	Olive black	Faint hydrogen sulfide	0.0	0.0	0.0	0.1	6.6	80.8	12.6	60.8	2.665	Sand/silt	<6.5	17	17			
			2018/12/20	Sunny	11.5	5.7	13.6	5	Olive black	Faint hydrogen sulfide	0.0	0.0	0.0	0.1	8.1	75.7	16.1	62.5	2.687	Silt/sand	<7.4	18	18			
	63 Approx. 1km offshore of Edogawa River Estuary	Coastal area of Keiyo Port (Edogawa River Estuary)	2019/2/19	Cloudy	9.2	5.7	8.0	4	Olive black	None	0.0	0.1	0.1	0.0	0.2	15.8	70.7	13.1	68.2	2.719	Silt/sand	<4.3	5	5.0		
			2018/6/22	Cloudy	24.4	6.8	19.3	3	Olive black	Faint seaweed	0.0	1.0	0.5	0.1	4.7	83.2	6.3	4.3	69.8	2.747	Sand	<0.63	0.81	0.81		
			2018/9/19	Sunny	24.5	6.7	24.3	2	Olive black	None	0.0	0.3	0.3	0.0	9.6	82.1	2.6	5.2	73.4	2.736	Sand	<0.51	1.0	1.0		
			2018/12/20	Sunny	11.0	6.9	13.0	3	Olive black	None	0.0	0.8	0.7	0.4	9.0	75.8	6.6	6.7	72.1	2.749	Sand	<5.2	11	11		
	64 Approx. 1km offshore of Edogawa River Estuary	Coastal area of Keiyo Port (Edogawa River Estuary)	2019/2/19	Cloudy	8.3	6.6	8.4	2	Olive black	None	0.0	0.7	0.2	0.1	3.9	84.5	3.3	7.6	73.5	2.748	Sand	<0.74	1.0	1.0		
			2018/6/22	Sunny	23.7	3.9	20.5	3	Olive black	None	0.0	0.0	0.0	0.1	3.4	84.0	7.8	4.7	65.9	2.651	Silt	<0.62	2.2	2.2		
			2018/9/19	Sunny	24.5	4.4	26.0	6	Olive black	Faint hydrogen sulfide	0.0	0.0	0.0	0.3	3.4	61.3	24.4	10.7	61.4	2.647	Sand/silt	<8.1	24	24		
			2018/12/20	Sunny	10.5	7.0	12.6	7	Olive black	Faint hydrogen sulfide	0.0	0.0	0.1	0.1	1.7	44.3	39.4	14.4	53.3	2.634	Silt/sand	<1.1	1.5	1.5		
			2019/2/19	Cloudy	8.1	3.6	8.1	2	Olive black	None	0.0	0.0	0.0	0.1	4.0	82.3	8.3	5.3	70.2	2.678	Sand	<3.9	3.8	3.8		



Survey Locations (Chiba,Saitama,Tokyo Prefectures)